

Source: T3

Title: Change Requests to TS 31.101 "UICC - Terminal interface characteristics"

Agenda item: 6.3.3

Document for: Approval

This document contains a change request to TS 31.101 v3.21.0 agreed by T3.

T3 Doc	Spec	CR	Rv	Rel	Subject
T3-000488	31.101	023		R99	Replacement of the technical contents with a reference to TS 102 221

CHANGE REQUEST

Please see embedded help file at the bottom of this page for instructions on how to fill in this form correctly.

31.101 CR 023

Current Version: **3.2.0**

GSM (AA.BB) or 3G (AA.BBB) specification number ↑

↑ CR number as allocated by MCC support team

For submission to: **TSG-T #9**
list expected approval meeting # here ↑

for approval ☒
for information ☐

strategic ☐
non-strategic ☐ (for SMG use only)

Form: CR cover sheet, version 2 for 3GPP and SMG

The latest version of this form is available from: <ftp://ftp.3gpp.org/Information/CR-Form-v2.doc>

Proposed change affects:

(at least one should be marked with an X)

(U)SIM ☐ ME ☐ UTRAN / Radio ☐ Core Network ☐

Source:

T3

Date:

17/08/00

Subject:

Replacement of the technical contents with a reference to TS 102 221

Work item:

Category:

(only one category shall be marked with an X)

F Correction ☒
A Corresponds to a correction in an earlier release ☐
B Addition of feature ☐
C Functional modification of feature ☐
D Editorial modification ☐

Release:

Phase 2 ☐
Release 96 ☐
Release 97 ☐
Release 98 ☐
Release 99 ☒
Release 00 ☐

Reason for change:

As a result of the agreement that responsibility for the common aspects of mobile telecommunications smart cards lies within ETSI EP SCP and the subsequent creation of ETSI TS 102 221 based on 3G TS 31.101 v3.2.0, it is necessary to replace the contents of TS 31.101 with a reference to TS 102 221.

Clauses affected:

Entire document

Other specs affected:

Other 3G core specifications ☐ → List of CRs:
Other GSM core specifications ☐ → List of CRs:
MS test specifications ☐ → List of CRs:
BSS test specifications ☐ → List of CRs:
O&M specifications ☐ → List of CRs:

Other comments:

It should be noted that TS 102 221 v3.0.0 is based on TS 31.101 plus several CRs approved at EP SCP #2.



help.doc

<----- double-click here for help and instructions on how to create a CR.

1 Scope

The present document specifies the interface between the UICC and the Terminal for 3G telecom network operation.

The present document specifies:

- the requirements for the physical characteristics of the UICC;
- the electrical interface between the UICC and the Terminal;
- the initial communication establishment and the transport protocols;
- the model which serves as a basis for the logical structure of the UICC;
- the communication commands and the procedures;
- the application independent files and protocols.

The administrative procedures and initial card management are not part of the present document.

2 References

The following documents contain provisions which, through reference in this text, constitute provisions of the present document.

- References are either specific (identified by date of publication, edition number, version number, etc.) or non-specific.
- For a specific reference, subsequent revisions do not apply.
- For a non-specific reference, the latest version applies.

~~[1] 3G TS 23.038: "Alphabets and language-specific information".~~

[1] [ETSI TS 102 221 "Smart Cards; UICC-Terminal interface; Physical and logical characteristics \(Release 1999\)"](#)

[2] 3G TS 31.102: "Characteristics of the USIM application".

~~[3] 3G TS 31.110: "Numbering system for telecommunication IC card applications".~~

~~[4] 3G TS 31.111: "USIM Application Toolkit (USAT)".~~

~~[5] ITU T Recommendation E.118: "The international telecommunication charge card".~~

~~[6] ISO 639 (1988): "Code for the representation of names of languages".~~

~~[7] ISO/IEC 7810 (1995): "Identification cards — Physical characteristics".~~

~~[8] ISO/IEC 7811 1 (1995): "Identification cards — Recording technique — Part 1: Embossing".~~

~~[9] ISO/IEC 7811 3 (1995): "Identification cards — Recording technique — Part 3: Location of embossed characters on ID-1 cards".~~

~~[10] ISO/IEC 7816 1 (1998): "Identification cards — Integrated circuit(s) cards with contacts, Part 1: Physical characteristics".~~

~~[11] ISO/IEC 7816 2 (1999): "Identification cards — Integrated circuit(s) cards with contacts, Part 2: Dimensions and locations of the contacts".~~

- [12] ~~ISO/IEC 7816-3 (1997): "Identification cards — Integrated circuit(s) cards with contacts, Part 3: Electronic signals and transmission protocols".~~
- [13] ~~ISO/IEC 7816-4 (1995): "Identification cards — Integrated circuit(s) cards with contacts, Part 4: Interindustry commands for interchange".~~
- [14] ~~ISO/IEC 7816-5 (1994): "Identification cards — Integrated circuit(s) cards with contacts, Part 5: Numbering system and registration procedure for application identifiers".~~
- [15] ~~ISO/IEC 7816-6 (1996): "Identification cards — Integrated circuit(s) cards with contacts, Part 6: Interindustry data elements".~~
- [16] ~~ISO/IEC 7816-8 (1999): "Identification cards — Integrated circuit(s) cards with contacts, Part 8: Security related Interindustry commands".~~
- [17] ~~ISO/IEC FCD 7816-9 (1999): "Identification cards — Integrated circuit(s) cards with contacts, Part 9: Additional Interindustry commands and security attributes".~~
- [18] ~~ISO/IEC 10646-1 (1993): "Information technology — Universal Multiple Octet-Coded Character Set (UCS) — Part 1: Architecture and Basic Multilingual Plane".~~

3 Definitions, symbols, abbreviations and coding

[All definitions, symbols, abbreviations applicable to the terminal are specified in TS 102 221 \[1\].](#)

3.1 ~~Definitions~~

For the purposes of the present document, the following terms and definitions apply.

3V technology Smart Card: smart Card operating at $3V \pm 10\%$ and $5V \pm 10\%$.

1.8V technology Smart Card: smart Card operating at $1.8V \pm 10\%$ and $3V \pm 10\%$.

3V technology Terminal: terminal operating the Smart Card — Terminal interface at $3V \pm 10\%$ and $5V \pm 10\%$.

1.8V technology Terminal: terminal operating the Smart Card — Terminal interface at $1.8V \pm 10\%$ and $3V \pm 10\%$.

Function: function contains a command and a response pair.

Application DF: application DF is the entry point to an application.

Access conditions: set of security attributes associated with a file.

Application: application consists of a set of security mechanisms, files, data and protocols (excluding transmission protocols).

Application protocol: set of procedures required by the application.

Card session: link between the card and the external world starting with the ATR and ending with a subsequent reset or a deactivation of the card.

Current directory: latest MF or DF or ADF selected.

Current EF: latest EF selected.

Data Object: information coded as TLV objects, i.e. consisting of a Tag, a Length and a Value part.

Dedicated File (DF): file containing access conditions and, optionally, Elementary Files (EFs) or other Dedicated Files (DFs).

Directory: general term for MF, DF and ADF.

Elementary File (EF): file containing access conditions and data and no other files.

File: directory or an organised set of bytes or records in the UICC.

File identifier: 2 bytes which address a file in the UICC.

GSM session: that part of the card session dedicated to the GSM operation.

ID-1 UICC: UICC having the format of an ID-1 card (see ISO/IEC 7816-1 [10]).

Master File (MF): unique mandatory file containing access conditions and optionally DFs and/or EFs.

Multi-application card: card that can have more than one selectable application.

Multi-session card: card that supports more than one concurrent selectable application session during a card session.

Multi-application capability terminal: terminal that can support more than one application.

Normal USIM operation: relating to general, PIN-related, 3G and or GSM security and subscription related procedures.

Padding: one or more bits appended to a message in order to cause the message to contain the required number of bits or bytes.

Plug-in UICC: second format of UICC.

Proactive UICC: UICC, which is capable of issuing commands to the Terminal. Part of USAT.

Record: string of bytes within an EF handled as a single entity.

Record number: number, which identifies a record within an EF.

Record pointer: pointer, which addresses one record in an EF.

Selectable application: application that is selectable by an AID according to the process described in ISO/IEC 7816-4 [13] over the Terminal UICC interface.

Selectable application session: link between the application and the external world during a card session starting with the application selection and ending with de-selection or termination of the card session.

UICC application toolkit procedures: defined in 3G-TS 31.111 [4].

USIM session: USIM session is a selectable application session for a USIM application.

3.2 Symbols

For the purposes of the present document, the following symbols apply:

t_F	fall time
t_R	rise time
V_{IH}	Input Voltage (high)
V_{IL}	Input Voltage (low)
V_{OH}	Output Voltage (high)
V_{OL}	Output Voltage (low)

3.3 Abbreviations

For the purposes of the present document, the following abbreviations apply:

AC	Access Condition
ACK	ACKnowledge
ADF	Application Dedicated File
ADM	Access condition to an EF which is under the control of the authority which creates this file

AID	Application IDentifier
ALW	ALWays
AM	Access Mode
AM-DO	Access Mode Data Object
APDU	Application Protocol Data Unit
ARR	Access Rule Reference
ATR	Answer To Reset
BGT	Block Guard Time
BWT	Block Waiting Time
C-APDU	Command APDU
CLA	CLAss
CRT	Control Reference Template
CLK	Clock
C-TPDU	Command TPDU
CWI	Character Waiting Integer
CWT	Character Waiting Time
DAD	Destination ADdress
DF	Dedicated File
DO	Data Object
EDC	Error Detection Code byte
EF	Elementary File
etu	elementary time unit
f	frequency
FCP	File Control Parameters
Fi	Clock rate conversion factor
FID	File IDentifier
GSM	Global System for Mobile communications
ICC	Integrated Circuit Card
I-Block	Information Block
ID	IDentifier
IEC	International Electrotechnical Commission
IFS	Information Field Sizes
IFSC	Information Field Size for the UICC
IFSD	Information Field Size for the Terminal
INF	INFormation field
INS	INStruction
I/O	Input/Output
ISO	International Organization for Standardization
Lc	Length of Command data sent by the application layer in a case 3 or 4 Command.
LCSI	Life Cycle Status Information
Le	Maximum length of data Expected by the application layer in response to a case 2 or 4 Command.
LEN	LENGth
LRC	Longitudinal Redundancy Check
LSB	Least Significant Bit
Luicc	Exact Length of data available in the UICC to be returned in response to the case 2 or 4 Command received by the UICC
MF	Master File
MMI	Man Machine Interface
MSB	Most Significant Bit
NAD	Node Address byte
NEV	NEVer
NPI	Numbering Plan Identifier
OSI	Open System Interconnection
P1	Parameter 1
P2	Parameter 2
P3	Parameter 3
PCB	Protocol Control Byte
PIN	Personal Identification Number
PPS	Protocol and Parameter Selection

PS	PIN Status
PS_DO	PIN Status Data Object
R-APDU	Response APDU
R-Block	Receive ready Block
RFU	Reserved for Future Use
R-TPDU	Response TPDU
RST	Reset
SAD	Source Address
S-Block	Supervisory Block
SC	Security Condition
SC_DO	Security Condition Data Object
SE	Security Environment
SEID	Security Environment Identifier
SFI	Short (elementary) File Identifier
State-H	High state logic level
State-L	Low state logic level
SW	Status Word
TE	Terminal Equipment
TLV	Tag Length Value
TPDU	Transfer Protocol Data Unit
USIM	Universal Subscriber Identity Module
WI	Waiting time Integer
VPP	Programming power input, optional use by the card
WTX	Waiting Time eXtension
WWT	Work Waiting Time

~~3.4 Coding Conventions~~

~~The following coding conventions apply to the present document.~~

~~All lengths are presented in bytes, unless otherwise stated. Each byte is represented by bits b8 to b1, where b8 is the most significant bit (MSB) and b1 is the least significant bit (LSB). In each representation, the leftmost bit is the MSB.~~

~~In the UICC, all bytes specified as RFU shall be set to '00' and all bits specified as RFU shall be set to 0. If the GSM and/or USIM application exists on a UICC or is built on a generic telecommunications card, then other values may apply for the non-GSM or non-USIM applications. The values will be defined in the appropriate specifications for such cards and applications. These bytes and bits shall not be interpreted by a Terminal in a GSM or 3G session.~~

~~The coding of Data Objects in the present document is according to ISO/IEC 7816-6 [16].~~

4 Physical and Logical Characteristics

The UICC/terminal interface shall comply with all requirements stated in TS 102 221 [1]. Where options are indicated in TS 102 221 [1], TS 31.102 [2] specifies which option is to be used for a UICC/terminal interface where the UICC supports a USIM.

~~4 Physical Characteristics~~

~~Two physical types of UICCs are currently specified by the present document. These are the "ID-1 UICC" and the "Plug-in UICC". At least one of the card sizes shall be supported by a terminal that is compliant to the present document.~~

~~The physical characteristics of both types of UICCs shall be in accordance with ISO/IEC 7816-1,2 [9,10] unless otherwise specified by the present document. The following additional requirements shall be applied to ensure correct operation in a Telecom environment.~~

4.1 ~~ID-1 UICC~~

The physical characteristics of the ID-1 UICC shall conform to ISO/IEC 7816-1,2 [9,10].

The Terminal shall accept embossed ID-1 UICCs. The embossing shall be in accordance with ISO/IEC 7811-1 [8] and ISO/IEC 7811-3 [9]. The contacts of the ID-1 UICC shall be located on the front (embossed face, see ISO/IEC 7810 [7]) of the card.

4.2 ~~Plug-in UICC~~

The Plug-in UICC shall have a width of 25 mm, a height of 15 mm, a thickness the same as an ID-1 UICC and a feature for orientation.

Annex A of ISO/IEC 7816-2 [11] applies with the location of the reference points adapted to the smaller size. The three reference points P1, P2 and P3 measure 7,5 mm, 3,3 mm and 20,8 mm, respectively, from 0. The values in figure 2 of ISO/IEC 7816-2 [11] are replaced by the corresponding values of figure 4.1.

The physical characteristics of the Plug-in UICC (Plug-in card) are defined in the present document.

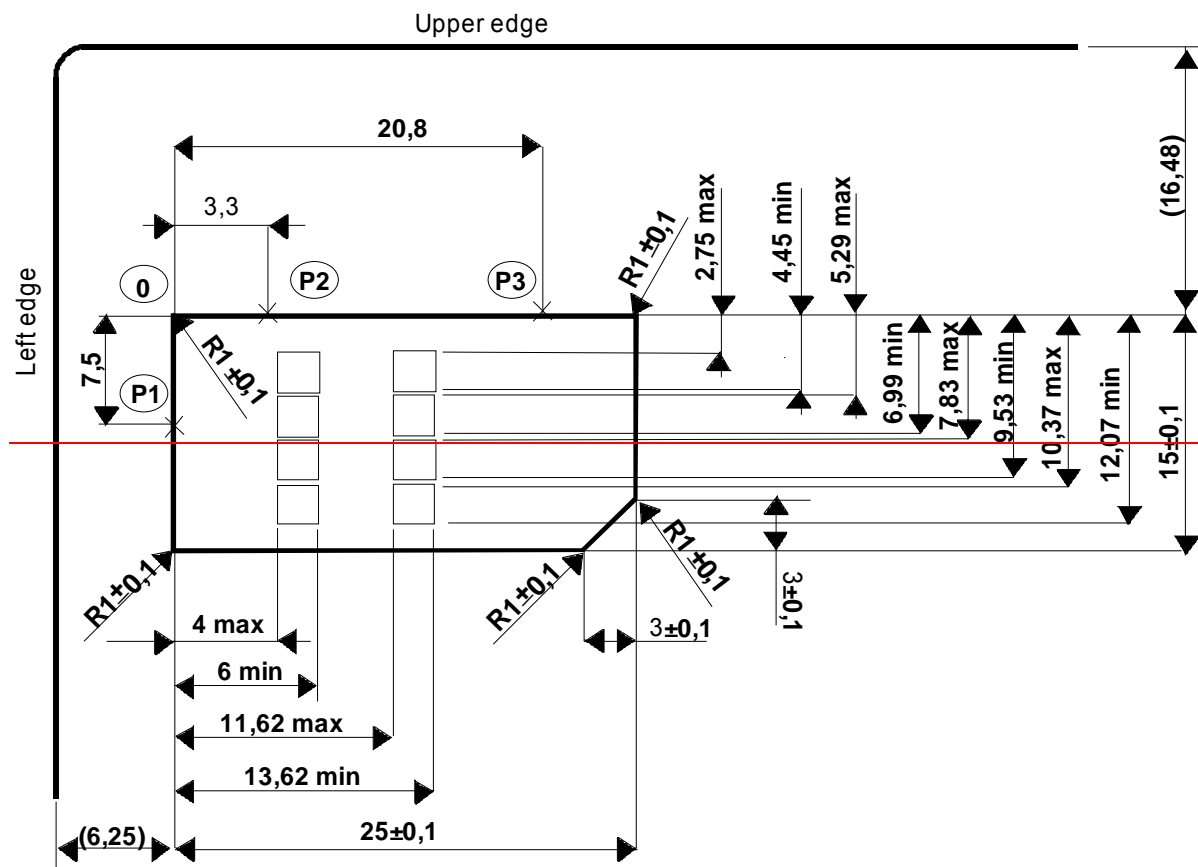


Figure 4.1: Plug-in UICC

4.3 ~~Temperature range for card operation~~

The temperature range for full operational use shall be between -25°C and $+70^{\circ}\text{C}$ with occasional peaks of up to $+85^{\circ}\text{C}$. "Occasional" means not more than 4 hours each time and not over 100 times during the life time of the card.

~~4.4 — Contacts~~

~~4.4.1 — Provision of contacts~~

~~4.4.1.1 — Terminal~~

~~Contacting elements in the Terminal in positions C4 and C8 are optional, and are not used by a Telecom application complying to the present document. They shall present a high impedance to the UICC. If it is determined that the UICC is a multi-application UICC, then these contacts may be used. Contact C6 need not be provided for Plug-in cards.~~

~~4.4.1.2 — UICC~~

~~Contacts C4 and C8 need not be provided by the UICC. If provided, they shall not be connected internally in the UICC if the UICC only contains a Telecom application. Contact C6 shall not be bonded in the UICC for any function other than supplying Vpp.~~

~~4.4.2 — Contact activation and deactivation~~

~~The Terminal shall connect, activate and deactivate the UICC in accordance with the Operating Procedures specified in ISO/IEC 7816-3 [12].~~

~~For any voltage level, monitored during the activation sequence, or during the deactivation sequence following normal power down, the order of the contact activation/deactivation shall be respected.~~

~~It is recommended that whenever possible, the deactivation sequence defined in ISO/IEC 7816-3 [12] should be followed by the Terminal on all occasions when the Terminal is powered down.~~

~~If the UICC clock is already stopped and is not restarted, the Terminal may deactivate all the contacts in any order, provided that all signals reach low level before Vcc leaves high level. If the UICC clock is already stopped and is restarted before the deactivation sequence, then the deactivation sequence specified in ISO/IEC 7816-3 [12] subclause 5.4 shall be followed.~~

~~When Vpp is connected to Vcc, as allowed in this specification, then Vpp shall be activated and deactivated with Vcc, at the time of the Vcc activation/deactivation, as specified in the sequences of ISO/IEC 7816-3 [12] subclauses 5.2 and 5.4.~~

~~4.4.3 — Inactive contacts~~

~~The voltages on contacts C1, C2, C3, C6 and C7 of the Terminal shall be in the range $0 \pm 0,4$ volts referenced to ground (C5) when the Terminal is switched off with the power source connected to the Terminal. The measurement equipment shall have a resistance of 50 kohms when measuring the voltage on C2, C3, C6 and C7. The resistance shall be 10 kohms when measuring the voltage on C1.~~

~~4.4.4 — Contact pressure~~

~~The contact pressure shall be large enough to ensure reliable and continuous contact (e.g. to overcome oxidation and to prevent interruption caused by vibration). The radius of any curvature of the contacting elements shall be greater than or equal to 0,8 mm over the contact area.~~

~~Under no circumstances shall the contact force exceed 0,5 N per contact.~~

~~Care shall be taken to avoid undue point pressure to the area of the UICC opposite to the contact area. Such pressure is potentially damaging to the components within the UICC.~~

5 ~~Electrical specifications of the UICC – Terminal interface~~

The electrical specification in the present document covers the supply voltage range from 4.5V to 5.5V, 2.7V to 3.3V and 1.62V to 1.98V. For each state (V_{OH} , V_{IH} , V_{IL} and V_{OL}), a positive current is defined as flowing out of the entity (Terminal or UICC) in that state. Vpp shall not be supported by the 3V and 1.8V technology Terminal or the 3V and 1.8V technology UICC.

When the UICC is in idle state, the current consumption shall not exceed 200 μ A at 1 MHz at +25°C. When the UICC is in clock stop mode, the current consumption shall not exceed 100 μ A at +25 °C.

The clock duty cycle shall be between 40 % and 60 % of the period during stable operation. A clock cycle is defined at 50% of Vcc from rising to rising edge or falling to falling edge. When switching clock frequencies Terminals shall ensure that no pulse is shorter than 100 ns which is 40 % of the shortest allowed period.

5.1 ~~Specification of the 5V UICC – Terminal Interface~~

5.1.1 ~~Supply voltage Vcc (contact C1)~~

The Terminal shall operate the UICC within the following limits:

Table 5.1: Electrical characteristics of Vcc under normal operating conditions

Symbol	Minimum	Maximum	Unit
Vcc	4,5	5,5	V

The current consumption of the UICC shall not exceed the value given in table 6.4 during the ATR (including activation and deactivation).

When the UICC is in idle state (see below) the current consumption of the card shall not exceed 200 μ A at 1 MHz and 25°C. If clock stop mode is enabled, then the current consumption shall also not exceed 200 μ A while the clock is stopped.

The Terminal shall source the maximum current requirements defined above. It shall also be able to counteract spikes in the current consumption of the card up to a maximum charge of 40 nAs with no more than 400 ns duration and amplitude of at most 200 mA, ensuring that the supply voltage stays in the specified range.

NOTE: ~~A possible solution would be to place a capacitor (e.g. 100 nF, ceramic) as close as possible to the contacting elements.~~

5.1.2 ~~Reset (RST) (contact C2)~~

The Terminal shall operate the UICC within the following limits:

Table 5.2: Electrical characteristics of RST under normal operating conditions

Symbol	Conditions	Minimum	Maximum
V_{OH}	$I_{OHmax} = +20 \mu A$	$V_{cc}-0,7$	V_{cc} (note)
V_{OL}	$I_{OLmax} = -200 \mu A$	0V (note)	0,6 V
t_R , t_F	$C_{out} = C_{in} = 30 pF$		400 μs
NOTE: To allow for overshoot the voltage on RST shall remain between -0,3 V and Vcc+0,3 V during dynamic operation.			

5.1.3 ~~Programming voltage Vpp (contact C6)~~

The UICC shall not require any programming voltage on Vpp. The Terminal need not provide contact C6. If the Terminal provides contact C6, then, in the case of the ID-1 UICC the same voltage shall be supplied on Vpp as on Vcc, while in the case of Plug-in UICC the Terminal need not provide any voltage on C6. Contact C6 may be connected to Vcc in any Terminal but shall not be connected to ground.

5.1.4 ~~Clock CLK (contact C3)~~

The Terminal shall support 1 to 5 MHz. The Terminal shall supply the clock. No "internal clock" UICC shall be used.

The duty cycle shall be between 40 % and 60 % of the period during stable operation.

The Terminal shall operate the UICC within the following limits:

Table 5.3: Electrical characteristics of CLK under normal operating conditions

Symbol	Conditions	Minimum	Maximum
V_{OH}	$I_{OHmax} = +20 \mu A$	$0,7 \times V_{cc}$	V_{cc} (note)
V_{OL}	$I_{OLmax} = -200 \mu A$	$0 V$ (note)	$0,5 V$
t_R, t_F	$C_{out} = C_{in} = 30 pF$		9 % of period with a maximum of $0,5 \mu s$
NOTE: To allow for overshoot the voltage on CLK shall remain between $-0,3 V$ and $V_{cc}+0,3 V$ during dynamic operation.			

5.1.5 ~~I/O (contact C7)~~

Table 5.4 defines the electrical characteristics of the I/O (contact C7). The values given in the table allow the derivation of the values of the pull-up resistor in the Terminal and the impedance of the drivers and receivers in the Terminal and UICC.

Table 5.4: Electrical characteristics of I/O under normal operating conditions

Symbol	Conditions	Minimum	Maximum
V_{IH}	$I_{IHmax} = \pm 20 \mu A$ (note 2)	$0,7 \times V_{cc}$	$V_{cc}+0,3 V$
V_{IL}	$I_{ILmax} = +1 mA$	$-0,3 V$	$0,8 V$
V_{OH} (note 1)	$I_{OHmax} = +20 \mu A$	$-3,8 V$	V_{cc} (note 3)
V_{OL}	$I_{OLmax} = -1 mA$	$-0 V$ (note 3)	$0,4 V$
t_R, t_F	$C_{out} = C_{in} = 30 pF$		$1 \mu s$
NOTE 1: It is assumed that a pull-up resistor is used in the interface device (recommended value: 20 kohms).			
NOTE 2: During static conditions (idle state) only the positive value can apply. Under dynamic operating conditions (transmission) short term voltage spikes on the I/O line may cause a current reversal.			
NOTE 3: To allow for overshoot the voltage on I/O shall remain between $-0,3 V$ and $V_{cc}+0,3 V$ during dynamic operation.			

5.2 ~~Specification of the 3V UICC – Terminal Interface~~

5.2.1 ~~Supply voltage Vcc (contact C1)~~

The Terminal shall operate the UICC within the following limits:

Table 5.5: ~~Electrical characteristics of Vcc under normal operating conditions~~

Symbol	Minimum	Maximum	Unit
V _{cc}	2,7	3,3	V

The Terminal shall be capable of sourcing the maximum current as defined in table 6.4. It shall also be able to counteract spikes in the current consumption of the card up to a maximum charge of 12 nAs with no more than 400 ns duration and an amplitude of at most 60 mA, ensuring that the supply voltage stays in the specified range.

5.2.2 ~~Reset (RST) (contact C2)~~

The Terminal shall operate the UICC within the following limits:

Table 5.6: ~~Electrical characteristics of RESET (RST) under normal operating conditions~~

Symbol	Conditions	Minimum	Maximum	Unit
V _{OH}	I _{OHmax} = +20 µA	0,8 x V _{cc}	V _{cc} (Note)	V
V _{OL}	I _{OLmax} = 200 µA	0 (Note)	0,2 x V _{cc}	V
T _R t _F	C _{in} = C _{out} = 30 pF		400	µs
NOTE: To allow for overshoot the voltage on RST should remain between -0,3V and Vcc +0,3V during dynamic operations.				

5.2.3 ~~Clock CLK (contact C3)~~

The Terminal shall support 1 to 5 MHz. The Terminal shall supply the clock. No "internal clock" UICC shall be used.

The duty cycle shall be between 40 % and 60 % of the period during stable operation.

The Terminal shall operate the UICC within the following limits:

Table 5.7: ~~Electrical characteristics of Clock (CLK) under normal operating conditions~~

Symbol	Conditions	Minimum	Maximum	Unit
V _{OH}	I _{OHmax} = +20 µA	0,7 x V _{cc}	V _{cc} (Note)	V
V _{OL}	I _{OLmax} = 20 µA	0 (Note)	0,2 x V _{cc}	V
T _R t _F	C _{in} = C _{out} = 30 pF		50	ns
NOTE: To allow for overshoot the voltage on CLK should remain between -0,3V and Vcc +0,3V during dynamic operations.				

5.2.4 ~~I/O (contact C7)~~

Table 5.8 defines the electrical characteristics of the I/O (contact C7). The values given in the table allow the derivation of the values of the pull-up resistor in the Terminal and the impedance of the drivers and receivers in the Terminal and UICC.

Table 5.8: Electrical characteristics of I/O under normal operating conditions

Symbol	Conditions	Minimum	Maximum	Unit
V_{IH}	$I_{IHmax} = \pm 20 \mu A$ (Note 2)	$0,7 \times V_{CC}$	$V_{CC} + 0,3$	V
V_{IL}	$I_{ILmax} = + 1 mA$	$-0,3$	$0,2 \times V_{CC}$	V
V_{OH} (Note 1)	$I_{OHmax} = + 20 \mu A$	$0,7 \times V_{CC}$	V_{CC} (Note 3)	V
V_{OL}	$I_{OLmax} = - 1 mA$	0 (Note 3)	0,4	V
T_R, t_F	$C_{in} = C_{out} = 30 pF$		4	μs
NOTE 1: It is assumed that a pull-up resistor is used on the interface device (recommended value: 20 k Ω).				
NOTE 2: During static conditions (idle state) only the positive value can apply. Under dynamic operating conditions (transmissions) short term voltage spikes on the I/O line may cause a current reversal.				
NOTE 3: To allow for overshoot the voltage on I/O shall remain between $-0,3V$ and $V_{CC} + 0,3V$ during dynamic operation.				

5.3 ~~Specification of the 1.8V UICC Terminal Interface~~

5.3.1 ~~Supply voltage Vcc (contact C1)~~

The Terminal shall operate the UICC within the following limits:

Table 5.9: Electrical characteristics of Vcc under normal operating conditions

Symbol	Minimum	Maximum	Unit
V_{CC}	1,62	1,98	V

The Terminal shall be capable of sourcing the maximum current as defined in table 6.4. It shall also be able to counteract spikes in the current consumption of the card up to a maximum charge of 12 nAs with no more than 400 ns duration and an amplitude of at most 60 mA, ensuring that the supply voltage stays in the specified range.

5.3.2 ~~Reset (RST) (contact C2)~~

The Terminal shall operate the UICC within the following limits:

Table 5.10: Electrical characteristics of RESET (RST) under normal operating conditions

Symbol	Conditions	Minimum	Maximum	Unit
V_{OH}	$I_{OHmax} = + 20 \mu A$	$0,8 \times V_{CC}$	V_{CC} (Note)	V
V_{OL}	$I_{OLmax} = - 200 \mu A$	0 (Note)	$0,2 \times V_{CC}$	V
T_R, t_F	$C_{in} = C_{out} = 30 pF$		400	μs
NOTE: To allow for overshoot the voltage on RST should remain between $-0,3V$ and $V_{CC} + 0,3V$ during dynamic operations.				

5.3.3 ~~Clock CLK (contact C3)~~

The Terminal shall support 1 to 5 MHz. The Terminal shall supply the clock. No "internal clock" UICC shall be used.

The duty cycle shall be between 40 % and 60 % of the period during stable operation.

The Terminal shall operate the UICC within the following limits:

Table 5.11: Electrical characteristics of Clock (CLK) under normal operating conditions

Symbol	Conditions	Minimum	Maximum	Unit
V_{OH}	$I_{OHmax} = +20 \mu A$	$0,7 \times V_{CC}$	$V_{CC} (Note-)$	V
V_{OL}	$I_{OLmax} = -20 \mu A$	0 (Note-)	$0,2 \times V_{CC}$	V
T_R, t_F	$C_{in} = C_{out} = 30 pF$		50	ns
NOTE: To allow for overshoot the voltage on CLK should remain between $-0,3V$ and $V_{CC}+0,3V$ during dynamic operations.				

5.3.4 I/O (contact C7)

Table 5.12 defines the electrical characteristics of the I/O (contact C7). The values given in the table allow the derivation of the values of the pull up resistor in the Terminal and the impedance of the drivers and receivers in the Terminal and UICC.

Table 5.12: Electrical characteristics of I/O under normal operating conditions

Symbol	Conditions	Minimum	Maximum	Unit
V_{IH}	$I_{IHmax} = \pm 20 \mu A (Note-2)$	$0,7 \times V_{CC}$	$V_{CC}+0,3$	V
V_{IL}	$I_{ILmax} = +1 mA$	$-0,3$	$0,2 \times V_{CC}$	V
$V_{OH} (Note-1)$	$I_{OHmax} = +20 \mu A$	$0,7 \times V_{CC}$	$V_{CC} (Note-3)$	V
V_{OL}	$I_{OLmax} = -1 mA$	0 (Note-3)	0,4	V
T_R, t_F	$C_{in} = C_{out} = 30 pF$		4	μs
NOTE 1: It is assumed that a pull-up resistor is used on the interface device (recommended value: $20 k \Omega$).				
NOTE 2: During static conditions (idle state) only the positive value can apply. Under dynamic operating conditions (transmissions) short term voltage spikes on the I/O line may cause a current reversal.				
NOTE 3: To allow for overshoot the voltage on I/O shall remain between $-0,3V$ and $V_{CC}+0,3V$ during dynamic operation.				

6 Initial communication establishment procedures

6.1 UICC activation and deactivation

The Terminal shall activate and deactivate the contacts of the UICC according to clause 4.4.2. During activation supply voltage switching, as defined in clause 6.2, shall take place prior to any further activity not related to the supply voltage switching.

6.2 Supply voltage switching

The Terminal shall initially activate the UICC with the lowest voltage class available. If no ATR is received, the UICC shall be deactivated and activated with the next higher class, if supported by the Terminal. If an ATR is received at the first applied voltage class, the contents of the ATR shall be analysed by the Terminal. If the operating class used by the Terminal is not supported by the UICC, the Terminal shall deactivate the UICC and activate it with a supply voltage class indicated by the UICC. If the ATR is corrupted, the Terminal shall repeat the procedure at least 3 times using the same operating class before rejecting the UICC. In case of 3 consecutive corrupted ATRs, the Terminal may activate the UICC with the next higher class. The Terminal is restricted not to use but the next higher class in the retrial attempt in this case.

6.2.1 Supply Voltage Classes

The supply voltage class shall be indicated in the ATR by the UICC ($TA_i i \geq 2$).

Table 6.1: Supply Voltage Classes indicated in ATR

Symbol	Minimum	Maximum	Unit	Class	Encoding (Binary)
V_{cc}	4,5	5,5	V	A	xx-xxx1
V_{cc}	2,7	3,3	V	B	xx-xx1x
V_{cc}	1,62	1,98	V	C	xx-x1xx
V_{cc}	RFU	RFU	V	D	xx-1xxx
V_{cc}	RFU	RFU	V	E	x1-xxxx
NOTE: Class A and B values are according to ISO/IEC 7816-3 [12]. Class C and D are a further evolution of values specified in ISO/IEC 7816-3 [12]. It is possible to support a range of classes. The support must be consecutive e.g. AB, BC. A combination like AC is not allowed.					

6.2.2 Power Consumption of the UICC during ATR

The maximum power consumption of the UICC during ATR is specified in tables 6.2a and 6.2b. The UICC power consumption during the ATR shall conform to the voltage class indicated in the ATR. If the UICC supports several supply voltage classes, each class shall conform to the corresponding maximum ATR power consumption, as specified in tables 6.2a and 6.2b. This is required because the terminal is not aware of the power consumption of the UICC until the ATR is received and an application is selected.

Table 6.2a: Power Consumption that applies during ATR at maximum external clock

Symbol	Voltage Class	Maximum	Unit
I_{cc}	A	10	mA
I_{cc}	B	7,5	mA
I_{cc}	C	5	mA
I_{cc}	D	RFU	mA
I_{cc}	E	RFU	mA

Table 6.2b: Power Consumption that applies during ATR at 4 MHz

Symbol	Voltage Class	Maximum	Unit
I_{cc}	B	6	mA
I_{cc}	C	4	mA
I_{cc}	D	RFU	mA
I_{cc}	E	RFU	mA
NOTE: 4 MHz is the maximum clock speed specified in GSM for 3V and below			

6.2.3 Application Related Electrical Parameters

The power consumption of a UICC depends upon the supply voltage class and the application it is running. The power consumption of the UICC is restricted to the values indicated in tables 6.2a and 6.2b until an application is selected. An application is considered selected when the access condition is successfully verified. If no access condition is required for the application, the application is considered selected when an application-related command is executed within the selected application. Selecting the application and performing a STATUS command is not considered to be the execution of an application command for these purposes.

The Terminal retrieves the application power consumption requirements by selecting the application. It then gets back the application power consumption indication in the response of the SELECT command. It may as well issue a STATUS command within the application and get this information in the response of the command.

Table 6.3: Maximum Power Consumption of the UICC during the UICC Session

Symbol	Voltage Class	Maximum	Unit
I_{cc}	A	60	mA
I_{cc}	B	50	mA
I_{cc}	C	30	mA
I_{cc}	D	RFU	mA
I_{cc}	E	RFU	mA
NOTE: — All values assume the maximum external clock.			

Applications may specify their own maximum power consumption values, up to the maximum specified in table 6.3.

If an application doesn't indicate its consumption, the terminal shall assume the maximum application power consumption is as specified in table 6.4.

The minimum power supply that the terminal shall be able to supply to the UICC during application session at maximum clock speed is specified in table 6.4:

Table 6.4: Minimum Power supply by the Terminal during the UICC Session

Symbol	Voltage Class	Minimum	Unit
I_{cc}	A	10	mA
I_{cc}	B	7.5	mA
I_{cc}	C	5	mA
I_{cc}	D	RFU	mA
I_{cc}	E	RFU	mA
NOTE: — All values assume the maximum external clock.			

6.3 Answer To Reset content

The ATR is the first string of bytes sent from the UICC to the Terminal after a reset has been performed. The ATR is defined in ISO/IEC 7816-3 [12].

The Terminal shall be able to receive interface characters for transmission protocols other than T=0 and T=1, historical bytes and a check byte, even if only T=0 and T=1 are used by the Terminal.

T=15 parameters shall be returned by the UICC.

Example ATRs are listed in Annex D of the present document.

6.3.1 Coding of historical bytes

The historical bytes indicate to the external world how to use the card. The information carried by the historical bytes of the UICC follows clause 8 of ISO/IEC 7816-4 [13].

The category indicator is the first byte sent by the UICC. Its value shall be '80' which means that the historical bytes are coded in COMPACT TLV data objects.

The first information sent by the card shall be the "card data service" data object. This data object is introduced by tag '31'. The second information sent by the card shall be the "card capabilities" data object. This data object is introduced by tag '73'. The other data objects are optional.

~~6.3.2 Speed enhancement~~

~~The Terminal and the UICC shall at least support $(F,D) = (512,8)$ and $(512,16)$ in addition to $(372,1)$, the default values. However, other values may also be supported. If the Terminal requests PPS using values other than those above then the PPS procedure shall be initiated accordingly. The value of the transmission factors F and D is given by the UICC in TA_i of the ATR.~~

~~6.4 PPS procedure~~

~~The Terminal and the UICC shall support the PPS procedure in order to use other transmission parameters as default values. The alternative parameters are indicated in the ATR. The interpretation of these parameters is according to ISO/IEC 7816-3 [12].~~

~~6.5 Cold Reset~~

~~The cold reset is performed according to clause 5.3.2 of ISO/IEC 7816-3 [12] and the UICC shall enter the negotiable mode. After a cold reset, the security status shall be reset.~~

~~6.6 Warm reset~~

~~The warm reset is performed according to clause 5.3.3 of ISO/IEC 7816-3 [12] and the UICC shall enter either the negotiable or the specific mode. After a warm reset, the security status shall be reset.~~

~~6.7 Clock stop mode~~

~~The UICC shall support the clock stop procedure as defined in this clause.~~

~~The Terminal shall wait at least 1860 clock cycles after having received the last character, including the guard time (2 etu), of the response before it switches off the clock (if it is allowed to do so). It shall wait at least 744 clock cycles before it sends the first command after having started the clock.~~

~~6.8 Bit/character duration and sampling time~~

~~The bit/character duration and sampling time specified in ISO/IEC 7816-3 [12], subclause 6.3.2 are valid for all communications.~~

~~6.9 Error handling~~

~~Following receipt of an ATR, which is not in accordance with this specification, e.g. because of forbidden ATR characters or too few bytes being transmitted, the Terminal shall perform a Reset. The Terminal shall not reject the UICC until at least three consecutive wrong ATRs are received.~~

~~During the transmission of the ATR, the error detection and character repetition procedure specified in ISO/IEC 7816-3 [12], subclause 6.3.3, is optional for the Terminal. For the subsequent transmission on the basis of $T=0$ this procedure is mandatory for the Terminal.~~

~~For the UICC the error detection and character repetition procedure is mandatory for all communications using $T=0$.~~

~~6.10 Compatibility~~

~~Terminals operating at 5V only and that are compliant to the electrical parameters defined in subclause 5.1 and subclauses can operate with a 3V or a 1.8V Technology Smart Card according to this specification.~~

~~For compatibility with existing terminals, UICCs that are used in applications where the supply voltage class detection is based on the STATUS response procedure (see subclause 6.2.3) shall support this procedure in addition to the supply voltage class indication in the ATR as defined in this standard.~~

~~In case the UICC does not support any supply voltage indication, the UICC shall be treated as a 5V only card by the Terminal.~~

7 ~~Transmission Protocols~~

~~This clause defines the transmission protocols used to exchange data between the terminal and the UICC. The structure and processing of commands initiated by the terminal for transmission control and for specific control in asynchronous half duplex transmission protocols will be described.~~

~~Two different protocols are defined, the character based protocol T=0 and the block based protocol T=1.~~

~~The T=0 protocol is mandatory for the UICC and the Terminal. The T=1 protocol is mandatory for the Terminal and optional for the UICC.~~

~~The protocol starts after either the answer to reset or a successful PPS exchange. Other parameters provided in the ATR and relevant to a specific protocol are defined in the respective parts of this clause.~~

~~The protocol applies a layering principle of the OSI reference model. Four layers are considered. The layers are:~~

- ~~— the physical layer. The contained definitions are valid for T=0 and T=1.~~
- ~~— the data link layer, which consists of:~~
 - ~~— a character component;~~
 - ~~— a block component;~~
 - ~~— block identification;~~
 - ~~— send blocks;~~
 - ~~— detect transmission and sequence errors;~~
 - ~~— handle errors;~~
 - ~~— synchronise the protocol.~~
- ~~— the transport layer, which defines the transmission of application oriented messages specific to each protocol.~~
- ~~— the application layer, which defines the exchange of messages according to an application protocol that is common to both protocols.~~

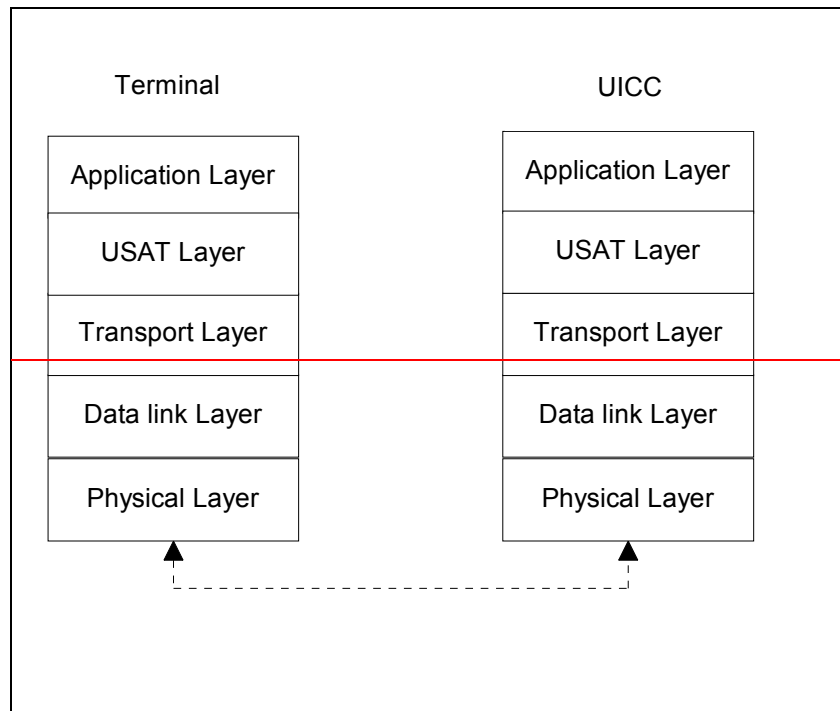


Figure 7.1: Layers

~~7.1 Physical Layer~~

~~Both protocols T=0 and T=1 shall use the physical layer and character frame as defined in 7.2.1.~~

~~7.2 Data Link Layer~~

~~This subclause describes the timing, specific options and error handling for the protocols T=0 and T=1.~~

~~7.2.1 Character Frame~~

~~A character that is transmitted over the I/O line is embedded in a character frame.~~

~~Before the transmission of a character, the I/O line shall be in state H.~~

~~A character consists of 10 consecutive bits (see Figure 7.2):~~

- ~~— 1 start bit in state L;~~
- ~~— 8 bits, which comprise the data byte;~~
- ~~— 1 even parity checking bit.~~

~~The parity bit is set, in a way, that there is an even number of bits set to '1' including the parity bit in the character frame.~~

~~The time origin is fixed as the mean between the last observation of state H and the first observation of state L. The receiver shall confirm the existence of a start bit before 0.7 etu (receiver time). Then the subsequent bits shall be received at intervals of $(n + 0.5 \pm 0.2)$ etu (n being the rank of the bit). The start bit is bit 1.~~

~~Within a character, the time from the leading edge of the start bit to the trailing edge of the n th bit is $(n \pm 0.2)$ etu.~~

~~The interval between the leading edges of the start bits of two consecutive characters is comprised of the character duration (10 ± 0.2) etu, plus a guardtime. Under error free transmission, during the guardtime both the UICC and the terminal shall be in reception mode (I/O line in state H).~~

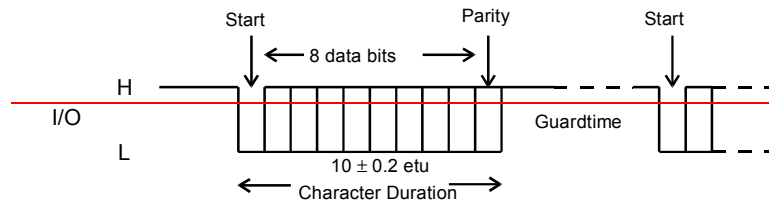


Figure 7.2: Character Frame

The data shall always be passed over the I/O line with the most significant byte first. The order of bits within a byte (that is, whether the least significant or most significant bit is transferred first) is specified in character TS returned in the answer to reset.

7.2.2 Transmission Protocol T=0

The T=0 is a half duplex asynchronous character based transmission protocol.

All commands using the protocol T=0 are initiated from the terminal by sending a five byte header, which informs the UICC what to do. The terminal will always act as master and the UICC as a slave. The direction of the transmission is assumed to be known to both the UICC and the terminal.

7.2.2.1 Timing and specific options for characters in T=0

The minimum interval between the leading edge of the start bits of two consecutive characters shall be at least 12 etus.

The maximum interval between the start leading edge of any character sent by the UICC and the start leading edge of the previous character sent by either by the UICC or the terminal i.e. the WWT. The value of the WWT shall not exceed $960 \times WI \times Fi/f$. WI is an integer received in the specific interface byte TC2. If no TC2 is available, default value of WI is 10. The clock rate conversion factor, Fi, may be indicated in TA1. If TA1 is absent the default value 372 is used.

If the WWT is exceeded, the terminal shall initiate a deactivation within 960 etus.

The minimum interval between the leading edges of the start bits of two consecutive characters sent in opposite direction shall be 16 etus.

7.2.2.2 Command Header

A command is always initiated by the terminal which sends an instruction to the UICC in the form of a five byte header called the command header. The command header is comprised of five consecutive bytes, CLA, INS, P1, P2, and P3.

These bytes together with any data to be sent with the command form the Command Transport Protocol Data Unit (C TPDU) for T=0. The mapping of the C APDU onto the C TPDU is described in clause 7.3.

The terminal transmits the header to the UICC and waits for a procedure byte.

7.2.2.3 Command Processing

When the UICC has received the command header, a response containing a procedure byte shall be sent to the terminal. Both the terminal and the UICC shall be able to keep track of the direction of the data flow and who has the access to the I/O line.

7.2.2.3.1 Procedure bytes

The procedure byte indicates to the terminal what action it shall take next.

Procedure bytes are used to keep up the communication between the terminal and the UICC. They shall not be transmitted to the Application Layer.

The coding of the procedure byte and the action that shall be taken by the terminal is shown in table 7.1.

Table 7.1: Procedure Byte coding

Byte	Value	Action
ACK	Equal to INS byte	All remaining data bytes shall be transferred by the terminal, or the terminal shall be ready to receive all remaining data bytes from the UICC.
	Equal to complement of INS byte ($\overline{\text{INS}}$)	The next data byte shall be transferred by the terminal, or the terminal shall be ready to receive the next data byte from the UICC.
NULL	'60'	The NULL byte requests no further data transfer and the terminal shall only wait for a character conveying a procedure byte. This behaviour provides additional work waiting time as defined in this section.
SW1	'61'	The terminal shall wait for a second procedure byte then send a GET RESPONSE command header to the UICC with a maximum length of 'XX', where 'XX' is the value of the second procedure byte (SW2).
	'6C'	The terminal shall wait for a second procedure byte then immediately repeat the previous command header to the UICC using a length of 'XX', where 'XX' is the value of the second procedure byte (SW2).

After these actions, the terminal shall wait for a further procedure byte or status word.

7.2.2.3.2 Status bytes

The status bytes SW1 SW2 form an end sequence indicating the status of the UICC at the end of a command. A normal ending of a command is indicating by SW1 SW2 = '90 00'.

Table 7.2: Status Byte Coding

Byte	Value	Action
SW1	'6X' or '9X' (except '60', '61', and '6C')	The terminal shall wait for a further status word (SW2). The terminal shall return the status words (together with any appropriate data) to the Application Layer and shall wait for another C-APDU.

7.2.2.4 Error detection and correction

The error detection and correction procedure is mandatory for T=0 protocol except for the Terminal during the ATR procedure.

An error, from the receiver's point of view, is defined by an incorrect parity. The error is indicated on the I/O line, which is set to state L after (10.5 ± 0.2) etus after the leading edge of the start bit for the character. The I/O line shall be in state L for a maximum of 2 etus and a minimum of 1 etu.

If the UICC or terminal as receiver detects a parity error within 11 ± 0.2 etus starting from the leading edge of the start bit, in a character just received, it shall set I/O to state L to indicate the error to the sender — see figure 7.2 "character frame".

If the transmitter detects an error, the character shall be sent again after a minimum delay of 2 etus.

7.2.3 Transmission protocol T=1

The T=1 protocol is a half duplex asynchronous block-based transmission protocol. The protocol may be initiated after an ATR due to a Warm Reset, or a successful PPS exchange.

The communication starts with a block sent by the terminal to the UICC. The right to send a block keeps alternating between the terminal and the UICC. A block is the smallest data unit, which can be sent and can contain either application data or transmission control data. A check of the received data might be performed before further processing of the received data.

7.2.3.1 Timing and specific options for blocks sent with T=1

This subclause defines options regarding timing, information file sizes and error detection parameters for blocks sent with T=1.

7.2.3.1.1 Information field size

The IFSC defines the maximum length of the information field of blocks that can be received by the UICC. The default value of the IFSC is 32 bytes another value may be indicated in TA3 of the ATR.

The IFSD defines the maximum length of the information field of blocks that the terminal can receive. IFSD has a default value of 32 bytes and may be adjusted during the card session. The maximum value of the IFSD is 254 bytes.

7.2.3.1.2 Character waiting integer

CWI is used to calculate CWT and shall be in the range from 0 to 5. The value is set in bits b4 to b1 in TB3.

7.2.3.1.3 Character waiting time

CWT is defined as the maximum delay between the leading edges of two consecutive characters in the block.

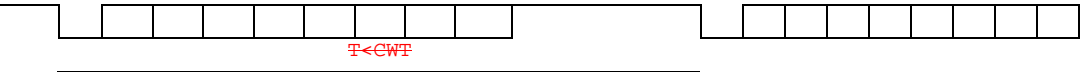


Figure 7.3: Character waiting time

The value of CWT may be calculated from the following equation: $CWT = (11 + 2^{CWI}) \text{ etu}$.

7.2.3.1.4 Block waiting time

BWT is defined as the maximum delay between the leading edge of the last character of the block received by the card and the leading edge of the first character of the next block sent by the card.

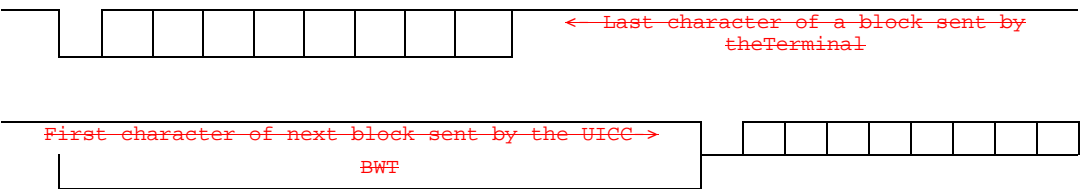


Figure 7.4: Block waiting time

BWT is used to detect an unresponsive card.

7.2.3.1.5 Block guard time

BGT is defined as the minimum delay between the leading edge of two consecutive characters sent in opposite directions. The value of BGT shall be 22 etu.

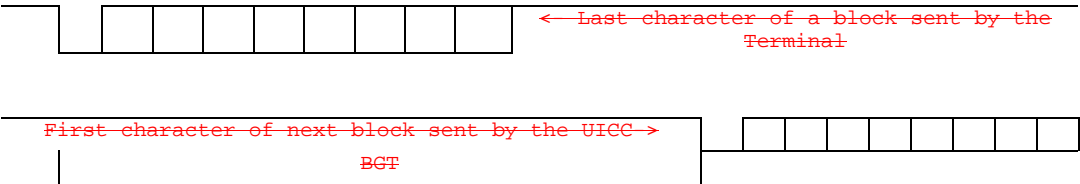


Figure 7.5: Block guard time

The delay between the last character of a block received by the UICC and the first character of the next block sent from the UICC shall be in the interval:

$$BGT < \text{delay} < BWT.$$

7.2.3.1.6 Waiting time extension

WTX is a parameter used to ask for more time to process a command.

7.2.3.1.7 Error detection code

The parameter TCi in the ATR is used to define which error detection code to use. LRC shall be used (b1=0). All other bits in TCi are RFU and shall be set to 0.

7.2.3.2 Block frame structure

The protocol consists of blocks, which are transmitted between the Terminal and the UICC. Each block has the following structure:

Table 7.3: Block frame structure

Prologue field			Information field	Epilogue field
NAD	PCB	LEN	INF	EDC
1 byte	1 byte	1 byte	0-254 bytes	1 byte

The prologue field and the epilogue field are mandatory. The Information field is optional.

7.2.3.2.1 Prologue field

The prologue field is divided into the following three mandatory fields:

- Node address byte (NAD), 1 byte;
- Protocol Control byte (PCB), 1 byte;
- Length (LEN), 1 byte.

7.2.3.2.1.1 Node address byte

The NAD byte identifies the source and the intended destination of the block. The NAD may also be used to distinguish between different logical connections if they coexist. Below is the structure of the NAD byte:

Table 7.4: Node address byte

b8	b7	b6	b5	b4	b3	b2	b1
Unused	DAD			Unused	SAD		

In the first block sent from the Terminal, a logical connection is set up based on the addresses in SAD and DAD. Subsequent blocks with an NAD containing the same pair of addresses are associated with the same logical connection.

Only the default value SAD=DAD=0 shall be supported. All other combinations are not allowed.

7.2.3.2.1.2 Protocol Control Byte

All information needed to control the transmission is transferred in the protocol control byte PCB. The coding of the PCB byte specifies the type of block. In the T=1 protocol the following three different types of blocks are supported:

- Information block, I block which is used to transfer command and response APDUs;
- Receive ready block, R block, which is used to transfer acknowledgements;
- Supervisory block, S block, which is used to send control information.

The tables below present the coding of the PCB byte for each block type, starting with the I block.

Table 7.5: Coding of PCB for an I-block

b8	b7	b6	b5	b4	b3	b2	b1
0	Sequence number, N(S)	Chaining, more data bit, M	RFU				

Table 7.6: Coding of PCB for an R-block

b8	b7	b6	b5	b4	b3	b2	b1
1	0	0	Sequence number N(R)	See table 7.5			

Table 7.7: Bit b4-b1 in the PCB-byte for the R-block

b4	b3	b2	b1	Value	Meaning
0	0	0	0	'0'	Error free
0	0	0	1	'1'	EDC and/or parity error
0	0	1	0	'2'	Other errors
X	X	X	X	'X'	Other values are RFU

Table 7.8: Coding of PCB for an S-block

b8	b7	b6	b5	b4	b3	b2	b1
1	1	X	See table 7.9				

Table 7.9: Bits b5-b1 of PCB for an S-block

b5	b4	b3	b2	b1	Value	Meaning
0	0	0	0	0	'0'	Resynchronization
0	0	0	0	1	'1'	Information field
0	0	0	1	0	'2'	Abortion
0	0	0	1	1	'3'	Extension of BWT
0	0	1	0	0	'4'	Error on VPP State, see NOTE
X	X	X	X	X	'X'	Other values are RFU
NOTE: Not used by UICCs and Terminals conforming to this specification.						

The coding of b6 indicates whether it is a request (b6=0) or a response (b6=1).

7.2.3.2.1.3 Length

The length byte codes the number of bytes in the Information field of the block. The number of bytes in the information field may vary in the range from 0 to 254 bytes, depending on the type of block.

The value LEN='00' indicates that the information field is absent and the value 'FF' is RFU.

7.2.3.2.1.4 Information field

The information field, INF, is optional and it depends on the type of the block what the field will be used for.

Table 7.10: Information field

Type of block	INF used for
I-block	Transfer command and response APDUs.
R-block	Not used
S-block	Transfers non-application related information: <input type="checkbox"/> INF shall be present (single byte) to adjust IFS with WTX <input type="checkbox"/> INF shall be absent to signal error on VPP, or managing chain abortion or resynchronisation

7.2.3.2.2 Epilogue field

The epilogue field contains the error detection code byte (EDC), which transfers the error detection code of the transmitted block.

The LRC as defined in ISO/IEC 7816-3 [12] shall be used.

7.2.3.2.3 Block notations

7.2.3.2.3.1 I-block

The I blocks are denoted as follows: I(N(S), M) where:

- N(S) is the send sequence number of the block;
- M is the more data bit used in the chaining function.

7.2.3.2.3.2 R-block

The R block is denoted as follows: R(N(R)), where:

- N(R) is the number of the expected I block.

7.2.3.2.3.3 S-block

S blocks are always used in pairs. A S(request) is always followed by a S(response) block. The S blocks are denoted as follows:

- S(RESYNCH request), a request of a resynchronization;
- S(RESYNCH response), an acknowledge of the resynchronization;
- S(IFS request), an offering of a maximum size of the information field;
- S(IFS response), an acknowledge on the information field;
- S(ABORT request), a request to abort the chain function;
- S(ABORT response), an acknowledge of the abortion of the chain function;
- S(WTX request), a request for an extension of the waiting time;
- S(WTX response), an acknowledge of the extension of the waiting time.

7.2.3.3 Error free operation

This subclause describes the rules for error free operation with T=1.

- The first block sent to the UICC shall be either an I block with N(S)=0 or an S block.

- If a sender S sends $I(N_s(S), 0)$, the block is acknowledged by the receiver R with a $I(N_r(S), M)$. The contents of $I(N_r(S))$ indicates data transfer data and that the receiver is ready to receive the next block from the sender.
- If a sender S sends an $I(N_s(S), 1)$ it should be acknowledged by the receiver R with $R(N_r(R))$, where $N_s(S) \neq N_r(R)$, to indicate that the received block was correct and that the receiver is ready to receive the next block.
- The UICC might need more than BWT to process the previously received block, a $S(WTX)$ request is sent by the UICC. The terminal shall acknowledge with a $S(WTX)$ response. The new allocated time starts at the leading edge of the last character of the $S(WTX)$ response.
- To change the value of IFSD, the terminal sends an $S(IFS)$ request. The request shall be acknowledged by the UICC with an $S(IFS)$ response with the same INF. The new IFSD is assumed to be valid as long as no new $S(IFS)$ request has been received by the UICC.
- When the receiver has received the number of characters as indicated in the value of the LEN and EDC the receiver returns the right to send.

7.2.3.4 Error handling for T=1

This subclause contains a description of the rules used to control the error handling for the T=1 protocol.

The block component of the data link layer shall be able to handle errors like:

- BWT time out;
- receive an invalid block, i.e. a block with parity errors, EDC error, invalid PDC, invalid length, lost synchronisation or failure to receive relevant $S(\dots)$ response after a $S(\dots)$ request.

Resynchronisation of the protocol may be attempted at three consecutive levels. If one level is unsuccessful, then the next level is tried.

- For the terminal, the three levels are:
 - Retransmission of blocks.
 - Use of $S(RESYNCH)$ request.
 - Card reset or deactivation.
- For the UICC, the three levels are:
 - Retransmission of blocks.
 - Use of $S(RESYNCH)$ response.
 - Without action by the terminal, the UICC becomes unresponsive.

7.2.3.4.1 Protocol initialisation

After an ATR due to a Warm reset or successful PPS procedure, the communication between the terminal and the UICC can be initiated. But if the terminal fails to receive an error free block, in the beginning of the protocol, a maximum of two more successive attempts to receive the block is allowed before resetting or a deactivation of the card takes place.

If the response on the first block sent by the terminal is not sent within BWT, the terminal shall send a $R(0)$.

When the protocol has been initiated and the first block received by the UICC is invalid, the UICC responses with a $R(0)$.

If the terminal fails to receive an error free block during a card session, a maximum of two further attempts is allowed before a $S(RESYNCH)$ request is sent.

7.2.3.4.2 Block dependent errors

When an I block has been sent and a BWT time out occurs or an invalid block has been received (with the terminal), an R block is sent, which requests with its $N(R)$ for the expected I block with $N(S)=N(R)$.

When an R block was sent and an invalid block is received or BWT time out, the R block shall be resent.

~~When an S(... request) has been sent and either a BWT time-out occurs (with the terminal) or the received response is not a S(... response), the S(... response) shall be resent. But if an S(... response) has been sent and either an invalid block is received or a BWT time-out occurs (with the terminal), an R-block shall be sent.~~

~~When the UICC sends an S(IFS request) and receives an invalid block, the S(IFS request) shall be resent maximum one extra time to receive an S(IFS response). After the second failure to receive an S(IFS response), the UICC shall stay in reception mode.~~

7.2.3.5 Chaining

~~Chaining allows the terminal or the UICC to transfer information, which is longer than IFSC or IFSD. If information longer than IFSC or IFSD is transferred, the information should be divided into pieces, each has a length \leq IFSC or IFSD. Each piece should be sent in an I block using the chaining function.~~

~~The value of the M-bit in the PCB byte of the I block controls the chaining function according to:~~

- ~~— M = 0, the block is not chained to the next block;~~
- ~~— M = 1, the block is chained to the next block, which shall be an I block.~~

~~When a receiver receives a more data I block, a R(N(R)) shall be sent. N(R) = N(S) of the expected I block. At least one chained block should follow.~~

~~A physical error, e.g. buffer overrun, in the UICC can cause an error in a chaining process. To abort a chain an S(ABORT request) can be sent by either the sender or the receiver. The request shall be answered with an S(ABORT response). When the S(ABORT response) has been received an R-block may be sent to either the terminal or the UICC to give back the right to send to either.~~

7.2.3.5.1 Rules for chaining

- ~~— When the terminal is the receiver, the terminal shall accept a sequence of chained I blocks sent from the UICC. The length of each block is \leq IFSD.~~
- ~~— When the UICC is the receiver, the UICC shall accept a sequence of chained I blocks sent from the terminal. The length of each block shall be equal to the value of IFSC except for the last block whose length can be any value in the range of 0 to IFSC.~~
- ~~— When the terminal is the sender, all I blocks of a chain shall have LEN = IFSC bytes except for the last, which could have a value in the range of 0 to IFSC.~~
- ~~— When the UICC is the sender, all I blocks of a chain shall have LEN \leq IFSD bytes per block.~~
- ~~— When the UICC is the receiver and receives block with LEN > IFSC, the block shall be rejected and acknowledged with a R-block with bits b1-b4 in the PCB byte having a value of 2.~~

~~For reasons of efficiency, it is not recommended to send empty I blocks.~~

7.3 Transport Layer

~~This subclause describes how the APDU are transported between the terminal and the UICC. For definition of the cases for Data in APDUs see subclause 7.4.~~

7.3.1 Transportation of an APDU using T=0

~~This subclause describes the mapping of C-APDUs and R-APDUs for T=0 protocol, the APDU exchange and the use of the GET-RESPONSE command for case 2 and case 4.~~

7.3.1.1 Mapping of APDUs to TPDU

The mapping of the C APDU onto the T=0 command header is dependent upon the case of the command. The mapping of the data (if present) and status returned by the UICC onto the R APDU is dependent upon the length of the data returned.

Procedure bytes '61XX' and '6CXX' are returned by the UICC to control exchanges between the Transport Layer of the Terminal and the UICC, and should never be returned to the Application Layer of the Terminal. Command processing in the UICC is not complete if it has returned procedure bytes '61XX' or '6CXX'.

Normal status on completion of processing a command is indicated if the UICC returns status words '9000' to the Transport Layer of the Terminal. The Transport Layer of the Terminal shall discontinue processing of a command (i.e. pass the R APDU to the Application Layer and wait for a further C APDU from the Application Layer) on receipt of any status words (but not on receipt of procedure bytes '61xx' and '6Cxx') from the UICC. For case 4 commands only, immediately following successful transmission of command data to the UICC, the Transport Layer of the Terminal shall continue processing the command if warning status bytes ('62xx' or '63xx') or application related status bytes ('9xxx' except '9000') are received.

The following descriptions of the mapping of data and status returned by the UICC onto the R APDU are for information, and apply only after the UICC has completed processing of the command, successfully or otherwise, and all data (if present) has been returned by the UICC under the control of '61XX' and '6CXX' procedure bytes. Detailed use of the INS, ~~INS~~, and '60' procedure bytes is not described.

The status returned by the UICC shall relate to the most recently received command. Where a GET RESPONSE command is used to complete the processing of a case 2 or case 4 command, any status returned by the UICC after receipt of the GET RESPONSE command shall relate to GET RESPONSE command, not to the case 2 or case 4 command which it completes.

7.3.1.1.1 Case 1

The C APDU is mapped onto the C TPDU by assigning the value '00' to the body part (P3 = '00').

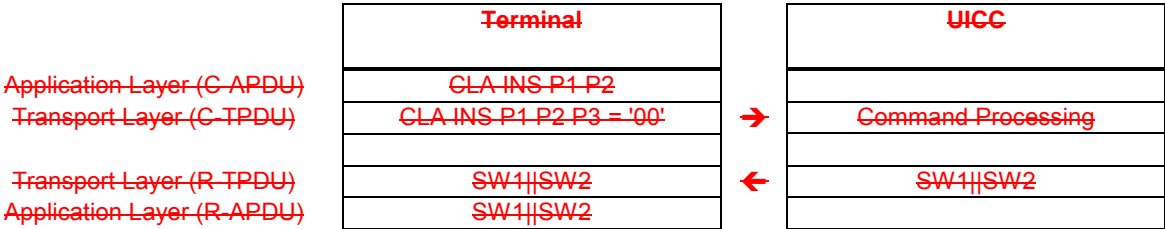


Figure 7.6

The flow of the exchange is as follows:

- 1 The Transport Layer of the Terminal shall send the T=0 command header to the UICC.
- 2 On receipt of the command header the UICC, under normal or abnormal processing, shall return status to the Transport Layer of the Terminal.

(The UICC shall analyse the T=0 command header to determine whether it is processing a case 1 command or a case 2 command requesting all data up to the maximum length available.)
- 3 On receipt of status from the UICC, the Transport Layer of the Terminal shall discontinue processing of the command.

See Annex C for details of the exchanges between the Transport Layer of the Terminal and the UICC.

The status words returned to the Transport Layer of the Terminal from the UICC after completion of processing of the command are mapped onto the mandatory trailer of the R APDU without change.

7.3.1.1.2 ~~Case 2~~

The C APDU is mapped onto the C TPDU without any change.

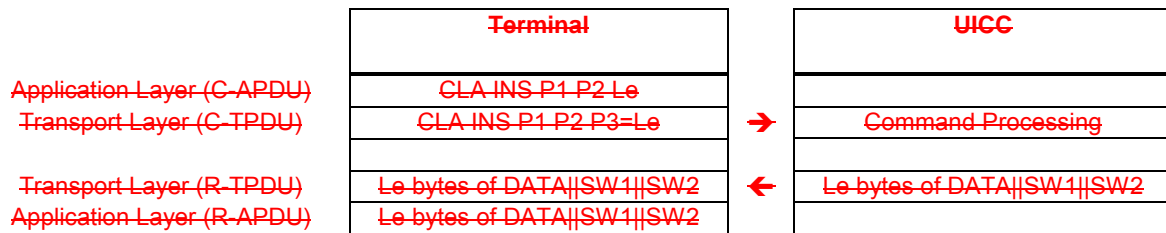


Figure 7.7

The flow of the exchange is as follows:

- 1—The Transport Layer of the Terminal shall send the T=0 command header to the UICC.
- 2—On receipt of the command header the UICC:
 - a)—under normal processing shall return data and status to the Transport Layer of the Terminal. The UICC shall use procedure bytes '6Cxx' (and if required, procedure bytes '61xx') to control the return of data (see below)
 - or
 - b)—under abnormal processing shall return status only to the Transport Layer of the Terminal.
- 3—On receipt of the data (if present) and status from the UICC, the Transport Layer of the Terminal shall discontinue processing the command.

See Annex C for details of the exchanges between the Transport Layer of the Terminal and the UICC, including use of the '61XX' and '6CXX' procedure bytes.

The R TPDU is mapped onto the R APDU without any change.

The data (if present) and status returned to the Transport Layer of the Terminal from the UICC after completion of processing of the command are mapped onto the R APDU as follows:

The data returned (if present) is mapped onto the conditional body of the R APDU. If no data is returned, the conditional body of R APDU is left empty.

The status returned is mapped onto the mandatory trailer of the R APDU without change.

7.3.1.1.3 ~~Case 3~~

The C APDU is mapped onto the C TPDU without any change. Le is a value between 1 and 255.

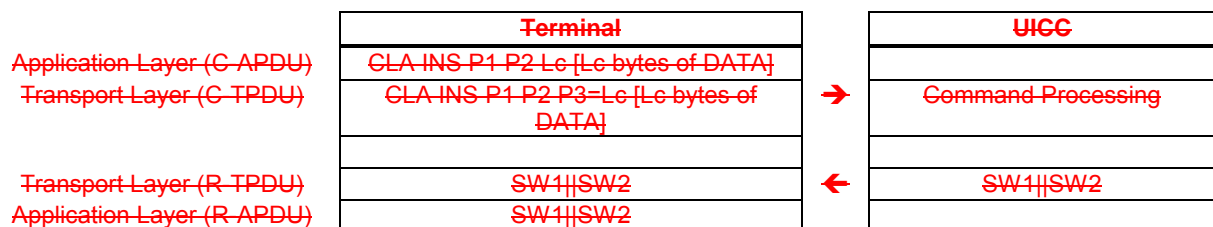


Figure 7.8

The flow of the exchange is as follows:

- 1—The Transport Layer of the Terminal shall send the T=0 command header to the UICC.
- 2—On receipt of the command header, if the UICC:

- a) returns a procedure byte, the Transport Layer of the Terminal shall send the data portion of the conditional body of the C-APDU to the UICC under the control of procedure bytes returned by the UICC
- or
- b) returns status, the Transport Layer of the Terminal shall discontinue processing of the command.
- 3 If processing was not discontinued in step 2(b), the UICC shall return status following receipt of the conditional body of the C-APDU and completion of processing the command.
- 4 On receipt of status from the UICC, the Transport Layer of the Terminal shall discontinue processing the command.

See Annex C for details of the exchanges between the Transport Layer of the Terminal and the UICC.

The status words returned to the Transport Layer of the Terminal from the UICC after completion of processing of the command, or the status words returned by the UICC that caused the Transport Layer of the Terminal to discontinue processing of the command, are mapped onto the R-APDU without change.

7.3.1.1.4 Case 4

The C-APDU is mapped onto the C-TPDU by cutting off the last byte (Le) of the body.

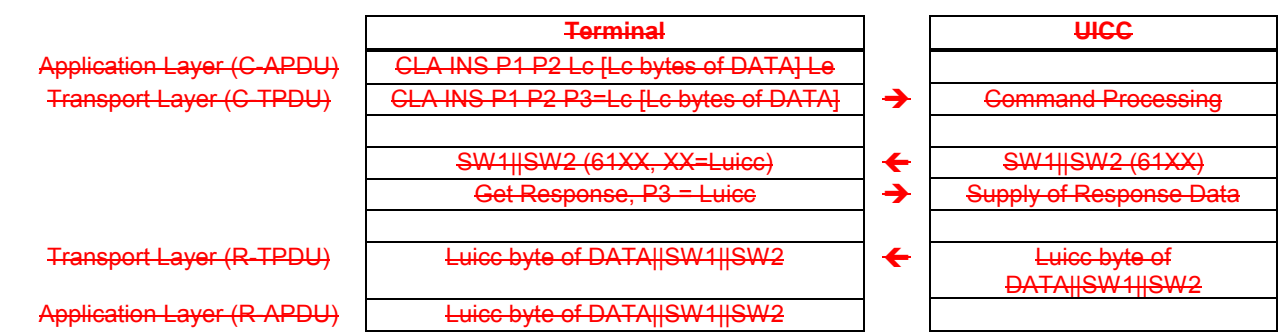


Figure 7.9

The flow of the exchange is as follows:

- 1 The Transport Layer of the Terminal shall send the T=0 command header to the UICC.
- 2 On receipt of the command header, if the UICC:
- a) returns a procedure byte, the Transport Layer of the Terminal shall send the data portion of the conditional body of the C-APDU to the UICC under the control of procedure bytes returned by the UICC
- or
- b) returns status, the Transport Layer of the Terminal shall discontinue processing of the command.
- 3 If processing was not discontinued in step 2(b), following receipt of the conditional body of the C-APDU, the UICC:
- a) under normal processing, shall return procedure bytes ‘61xx’ to the Transport Layer of the Terminal requesting the Transport Layer of the Terminal to issue a GET-RESPONSE command to retrieve the data from the UICC
- or
- b) under abnormal processing, shall return status only to the Transport Layer of the Terminal.
- 4 On receipt of the procedure bytes or status returned in step 3, if the UICC:

~~a) returned '61xx' procedure bytes as in step 3(a), the Transport Layer of the Terminal shall send a GET RESPONSE command header to the UICC with P3 set to a value less than or equal to the value contained in the 'xx' byte of '61xx' procedure bytes~~

~~or~~

~~b) returned status as in step 3(b) that indicates a warning ('62xx' or '63xx'), or which is application related ('9xxx' but not '9000'), the Transport Layer of the Terminal shall send a GET RESPONSE command with Le='00'~~

~~or~~

~~c) returned status as in step 3(b) other than that described in step 4(b), the Transport Layer of the Terminal shall discontinue processing of the command.~~

~~5— If processing was not discontinued in step 4(c), the GET RESPONSE command shall be processed according to the rules for case 2 commands.~~

~~The first R-TPDU from the UICC indicates that the UICC performed the command correct and that the UICC has more data of length Luicc bytes to transfer. The first R-TPDU is mapped without any changes onto the R-APDU.~~

~~See Annex C for details of the exchanges between the Transport Layer of the Terminal and the UICC, including use of the '61XX' and '6CXX' procedure bytes.~~

~~7.3.1.1.5 Use of Procedure Bytes '61xx' and '6Cxx'~~

~~The UICC returns procedure bytes '61xx' and '6Cxx' to the Transport Layer of the Terminal to indicate to it the manner in which it should retrieve the data requested by the command currently being processed. These procedure bytes are only used when processing case 2 and 4 commands using T=0.~~

~~Procedure bytes '61xx' instruct the Transport Layer of the Terminal to issue a GET RESPONSE command to the UICC. P3 of the GET RESPONSE command header is set to 'xx'.~~

~~Procedure bytes '6Cxx' instruct the Transport Layer of the Terminal to immediately resend the previous command header setting P3 = 'xx'.~~

~~Usage of these procedure bytes during error free processing with case 2 and 4 commands is as follows. In the case of an error, the UICC may return status indicating error or warning conditions instead of the '61xx' or '6Cxx' response.~~

~~7.3.1.1.5.1 Case 2 Commands~~

~~1. If the UICC receives a case 2 command header and Le = '00' or Le > Luicc, it shall return :~~

~~a) procedure bytes '6C Luicc' instructing the Transport Layer of the Terminal to immediately resend the command header with P3 = Luicc~~

~~or~~

~~b) status indicating a warning or error condition (but not SW1-SW2 = '90-00').~~

~~1— If the UICC receives a case 2 command header and Le = Luicc, it shall return:~~

~~a) data of length Le (= Luicc) under the control of the INS, , or '60' procedure bytes followed by the associated status~~

~~or~~

~~b) procedure bytes '61xx' instructing the Transport Layer of the Terminal to issue a GET RESPONSE command with a maximum length of 'xx', 'xx' being less than Luicc (this could happen if the card buffer size is smaller than Luicc)~~

~~or~~

~~e) status indicating a warning or error condition (but not SW1 SW2 = '90 00').~~

~~2) If the UICC receives a case 2 command header and $Le < L_{uicc}$ it shall return:~~

~~a) data of length Le under the control of the INS, \overline{INS} , or '60' procedure bytes followed by procedure bytes '61xx' instructing the Transport Layer of the Terminal to issue a GET RESPONSE command with a maximum length of 'xx'~~

~~or~~

~~b) status indicating a warning or error condition (but not SW1 SW2 = '90 00').~~

~~7.3.1.1.5.2 Case 4 Commands~~

~~If the UICC receives a case 4 command, after processing the data sent with the C APDU, it shall return:~~

~~a) procedure bytes '61 xx' instructing the Transport Layer of the Terminal to issue a GET RESPONSE command with a maximum length of 'xx'~~

~~or~~

~~b) status indicating a warning or error condition (but not SW1 SW2 = '90 00').~~

~~The GET RESPONSE command so issued is then treated as described for case 2 commands.~~

~~7.3.2 Transportation of a APDU using T=1~~

~~A C APDU is sent from the Application Layer of the Terminal to the Transport Layer of the Terminal. The Transport Layer maps the C APDU onto the INF of an I block without change. The I block is sent to the UICC. The Response data (if present) and the status is returned from the UICC to the Transport Layer of the Terminal in the INF of an I block. If the UICC returns a status which indicates:~~

- ~~— normal processing ('61XX');~~
- ~~— a warning ('62XX' or '63XX');~~
- ~~— an application condition ('9XXX');~~
- ~~— or a successful execution of the command ('9000');~~

~~then it shall also return data (if available) associated with the processing of the command. No data shall be returned with any other status.~~

~~The contents of the INF of the I block are mapped onto the R APDU without change and returned to the Application Layer of the Terminal. The transportation of APDU messages with T=1 is mapped to the information of an I block according to the four different cases described below. Each case is described in detail in the following subclauses.~~

~~7.3.2.1 Case 1~~

~~C APDU is mapped to the INF of the I block without any changes:~~

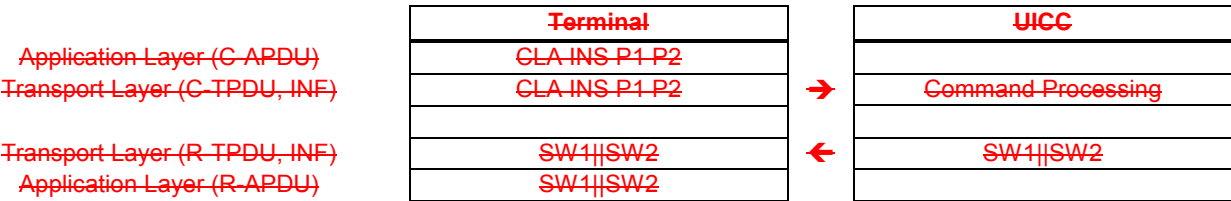


Figure 7.10

~~The response received from the INF in the I block is mapped unchanged to the R APDU.~~

7.3.2.2 Case 2

The C-APDU is mapped to the INF of an I-block without any changes.

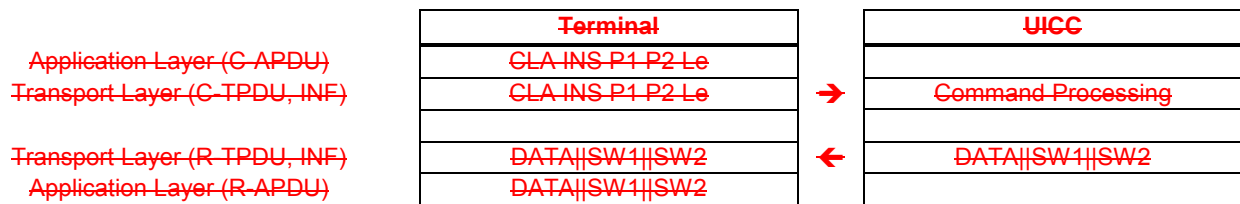


Figure 7.11

The R-APDU consists of either the INF of the I block or the concatenation of the INF of successive I blocks all received in the same response, which all shall be chained.

7.3.2.3 Case 3

The C-APDU is mapped without any changes to either an INF or is concatenated onto several successive I blocks, which all shall be chained.

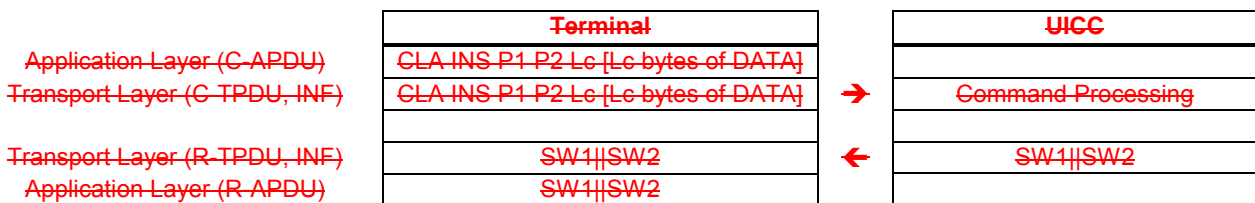


Figure 7.12

The INF of the I block is mapped to the R-APDU without any changes.

7.3.2.4 Case 4

The C-APDU is mapped without any changes to either an INF or is concatenated onto several successive I blocks, which all shall be chained.

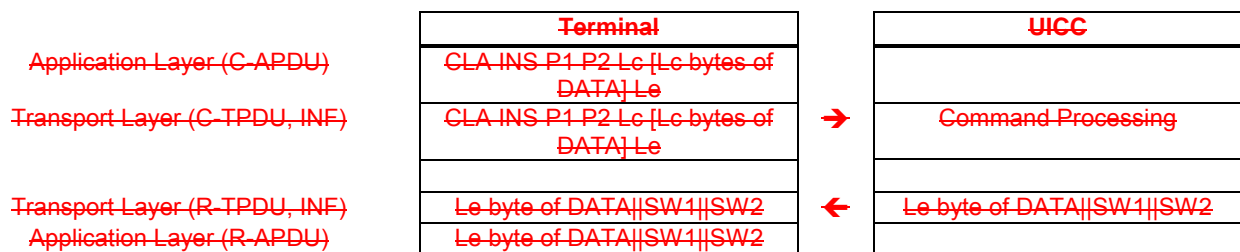


Figure 7.13

The response consists of either the INF of an I block received in the response or the concatenation of INF of successive I blocks in response, which all shall be chained.

7.4 Application Layer

The application protocol consists of an ordered set of exchanges between the Application Layer and the Transport Layer of the Terminal. Application protocols are defined in subsequent parts of this specification.

Each step in an application layer exchange consists of a command response pair, where the Application Layer of the Terminal sends a command to the UICC via the Transport Layer of the Terminal, and the UICC processes it and sends a response to Application Layer of Terminal using the Transport Layer of the UICC and the Transport Layer of Terminal.

Each specific command (C-APDU) has a specific response (R-APDU). The commands and responses are called command messages and response messages. The structure of the C-APDU can be found in clause 10.2. The structure of the R-APDU can be found in clause 10.3.

Both command and response messages may contain data. Thus, four cases shall be managed by the transmission protocols via the transport layer, as shown in table 7.11.

Table 7.11: Definition of Cases for Data in APDUs

Case	Command Data	Response Data
1	Absent	Absent
2	Absent	Present
3	Present	Absent
4	Present	Present

7.4.1 Exchange of APDUs

The following figure shows the principle exchange of command/response pairs.

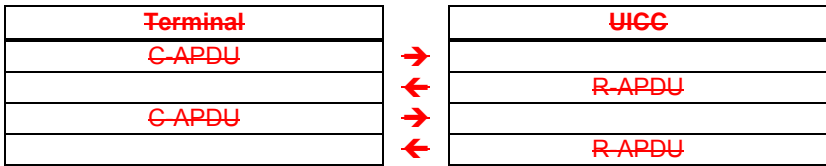


Figure 7.14

7.4.2 USAT Layer

The USAT layer uses application status words to indicate:

- the availability of a proactive command for the Terminal ('91XX');
- the usage of response data to an Envelope command by the Terminal (nominal '9000', warning '62XX' or '63XX');
- the temporary unavailability of the USAT to handle an Envelope command ('9300'), see subclause 11.6.6.

7.4.2.1 Proactive Command

Where the status word SW1-SW2 is equal to '9000', the card can reply '91XX' to indicate that a proactive command is pending. The terminal uses the FETCH C-APDU to get the pending Proactive Command. The terminal sends to the UICC the response of the Proactive Command execution with the TERMINAL RESPONSE C-APDU.

The mechanism, described hereafter for a case 4 C-APDU, is independent from the transport protocol.

	Terminal		UICC
C-APDU	CLA INS P1 P2 Le [Le DATA] Le	➔	Command Processing
R-APDU	Luicc DATA SW1='91' SW2='XX'	➔	Luicc DATA SW1='91' SW2='XX'
Any C-APDU/R-APDU
C-APDU = FETCH	CLA INS='12' P1 P2 Le='XX'	➔	Command Processing
R-APDU	Le DATA=Proactive Command SW1='90' SW2='00'	➔	Le DATA=Proactive Command SW1='90' SW2='00'
Any C-APDU/R-APDU
C-APDU = TERMINAL RESPONSE	CLA INS='14' P1 P2 Le [Le DATA]	➔	Command Processing
R-APDU	SW1 SW2	➔	SW1 SW2'

7.4.2.2 ENVELOPE Commands

The ENVELOPE C-APDU is used to transmit data to the USAT. For some BER-TLV (e.g. SMS-PP Data Download) contained in the body of this command, the card may send back data to be transmitted by the Terminal on the acknowledgement channel (e.g. RP-ACK) or on the error channel (e.g. RP-ERROR). The BER-TLV objects are defined in TS 31.111[4].

This command is case 4 and is described here after for the two options.

Case 4 : positive acknowledgement

	Terminal		UICC
C-APDU = ENVELOPE	CLA INS='C2' P1 P2 Le [Le DATA] Le=00	➔	Command Processing
R-APDU	Luicc DATA SW1='90' SW2='00'	➔	Luicc DATA SW1='90' SW2='00'

The Terminal shall consider the data field received as a positive acknowledgement and use the normal acknowledgement channel (e.g. RP-ACK) when the Status Word present in the R-APDU is '9000'.

Case 4 : negative acknowledgement

	Terminal		UICC
C-APDU = ENVELOPE	CLA INS='C2' P1 P2 Le [Le DATA] Le=00	➔	Command Processing
R-APDU	Luicc DATA SW1='62'or '63' SW2='XX'	➔	Luicc DATA SW1='62'or '63' SW2='XX'

The Terminal shall consider the data field received as a negative acknowledgement and use the error acknowledgement channel (e.g. RP-ERROR), when the Status Word present in the R-APDU is either '62XX' or '63XX'.

8 Application and File structure

This clause describes the application and logical structure for the UICC.

8.1 UICC Application structure

An example of organisation of applications in the UICC is listed in figure 8.1.

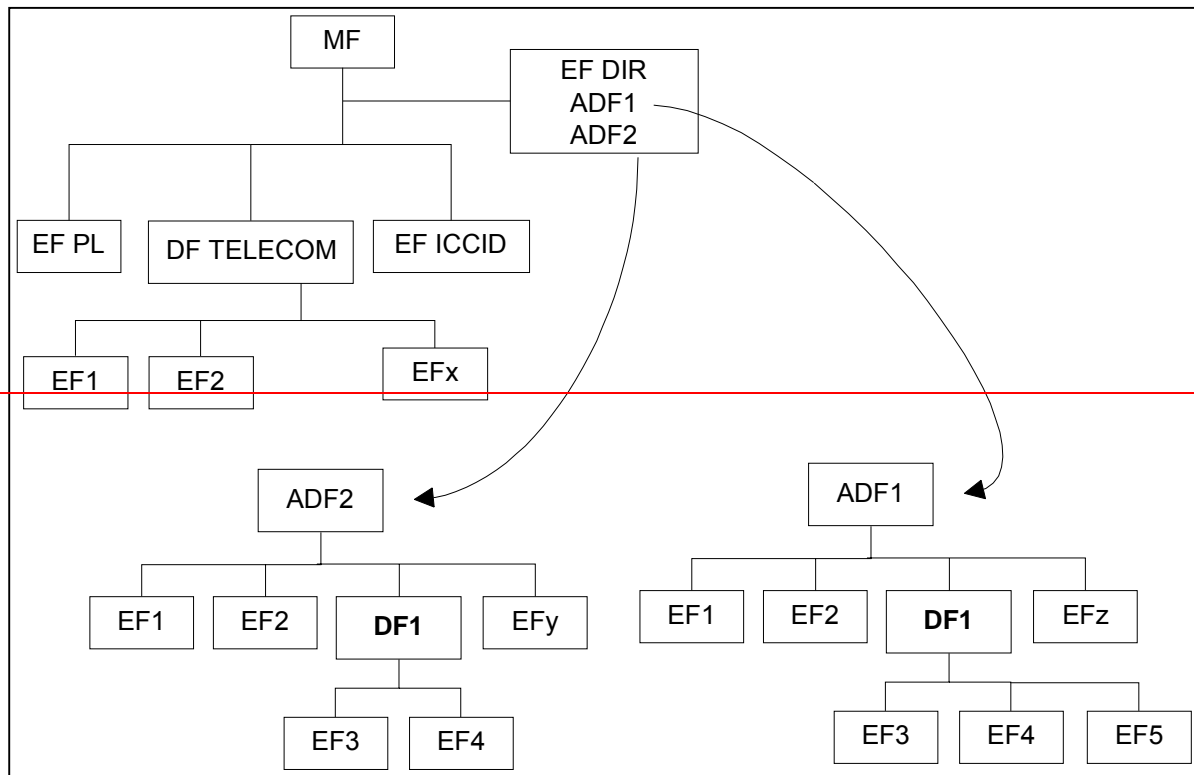


Figure 8.1: Example of an application structure

The present document does not impose any restrictions on the location of applications. All applications are uniquely identified by application identifiers that are obtained from EF_{DIR} . These application identifiers are used to select the application.

EF_{DIR} , EF_{PL} and EF_{ICCID} are all mandatory and reside directly under the Master File. See clause 13 of the present document for details.

$DF_{TELECOM}$ is optional. If present it resides under the MF and use the reserved FID '7F 10'. $DF_{TELECOM}$ contains application independent information.

8.2 File types

This subclause defines the file types that applies to applications complying to this standard.

8.2.1 Dedicated files

A Dedicated File (DF) allows for a functional grouping of files. It can be the parent of DFs and/or EFs. DFs are referenced by file identifiers.

An Application DF (ADF) is a particular DF that contains all the DFs and EFs of an application.

8.2.2 Elementary files

8.2.2.1 Transparent EF

An EF with a transparent structure consists of a sequence of bytes. When reading or updating, the sequence of bytes to be acted upon is referenced by a relative address (offset), which indicates the start position (in bytes), and the number of bytes to be read or updated. The first byte of a transparent EF has the relative address '00 00'. The total data length is indicated in the SELECT response of the EF.

8.2.2.2 Linear fixed EF

An EF with linear fixed structure consists of a sequence of records all having the same (fixed) length. The first record is record number 1. The length of a record as well as this value multiplied by the number of records are indicated in the SELECT response of the EF.

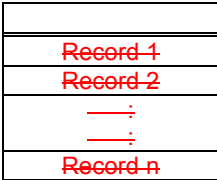


Figure 8.2: Structure of a linear fixed file

There are several methods to access records within an EF of this type:

- absolutely using the record number;
- when the record pointer is not set it shall be possible to perform an action on the first or the last record by using the NEXT or PREVIOUS mode;
- when the record pointer is set it shall be possible to perform an action on this record, the next record (unless the record pointer is set to the last record) or the previous record (unless the record pointer is set to the first record);
- by identifying a record using pattern search.

If an action following selection of a record is aborted (e.g. due to an unsuccessful execution of a command), then the record pointer shall remain set at the record at which it was set prior to the action.

It is not possible, at present, to have more than 254 records in a file of this type, and each record cannot be greater than 255 bytes.

8.2.2.3 Cyclic EF

Cyclic files are used for storing records in chronological order. When all records have been used for storage, then the next storage of data shall overwrite the oldest information.

An EF with a cyclic structure consists of a fixed number of records with the same (fixed) length. In this file structure there is a link between the last record (n) and the first record. When the record pointer is set to the last record n, then the next record is record 1. Similarly, when the record pointer is set to record 1, then the previous record is record n. The last updated record containing the newest data is record number 1, and the oldest data is held in record number n.

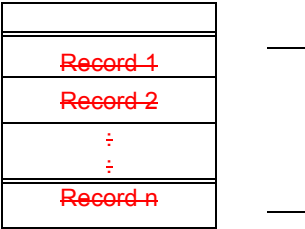


Figure 8.3: Structure of a cyclic file

For update operations only PREVIOUS record shall be used. For reading operations, the methods of addressing are Next, Previous, Current and Record Number.

If an action following selection of a record is aborted (e.g. due to an unsuccessful execution of a command), then the record pointer shall remain set at the record at which it was set prior to the action.

It is not possible, at present, to have more than 254 records in a file of this type, and each record cannot be greater than 254 bytes.

8.3 File referencing

A File Identifier (FID) is used to address or identify a specific file. The FID consists of two bytes and shall be coded in hexadecimal notation.

FIDs shall be subject to the following conditions:

- the FID shall be assigned at the time of creation of the file concerned;
- no two files under the same parent shall have the same ID;
- the immediate children of the current DF, the parent DF or the immediate children of the parent DF shall not have the same FID.

A path is a concatenation of FIDs. The path starts from MF or the current DF, and ends with the identifier of the file itself. If the identifier of the current DF is unknown, the reserved value '3FFF' shall be used at the beginning of the path. The order of the FIDs is always in the direction from father to child.

A short file identifier (SFI) is coded as 5 bits valued in the range from 1 to 30. No two files under the same parent shall have the same SFI.

A DF name is coded on 1 to 16 bytes. The DF name is the AID and shall be unique within a card.

8.4 Methods for selecting a file

After the UICC activation (as defined in clause 6.1) and the Answer To Reset (ATR), the Master File (MF) is implicitly selected and becomes the Current Directory. Each file may then be selected by using the SELECT function, using one of the 3 file referencing methods defined in this subclause.

8.4.1 SELECT by File Identifier Referencing

Selecting a DF, an ADF or the MF sets the Current Directory. After such a selection there is no current EF. Selecting an EF sets the current EF and the Current Directory remains the DF, ADF or MF, which is the parent of this EF. The current EF is always a child of the Current Directory. Only the ADF of the current application can be selected by FID.

Any application specific command shall only be operable if it is specific to the Current Directory.

The following files may be selected, by File Identifier (FID) referencing, from the last selected file:

- any file which is an immediate child of the Current Directory;
- any DF which is an immediate child of the parent of the current DF;
- the parent of the Current Directory;
- the current DF or ADF;
- the MF.

Figure 8.4 is an example of the logical structure for an application conforming to this document.

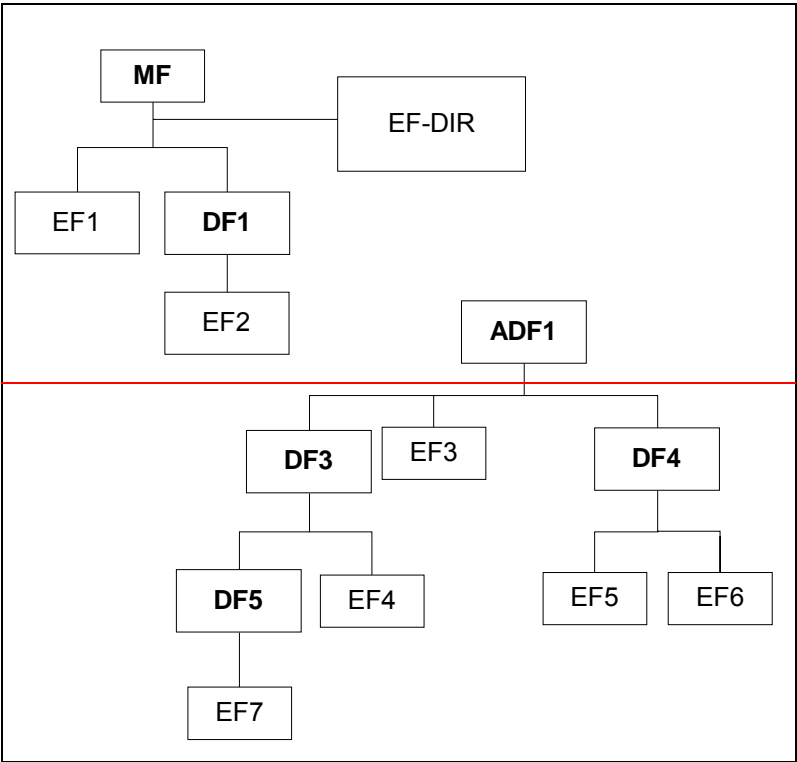


Figure 8.4: Example of a logical structure

The following table gives the valid selections for an application complying to this document for the logical structure in figure 8.4, if the FID is used. Reselection of the last selected file is also allowed but not shown.

Table 8.1: File selection

Last selected file	Valid Selections
MF	DF1, EF1, EF-DIR
DF1	MF, EF2,
ADF1	MF, DF3, DF4, EF3
DF3	MF, ADF1, DF4, DF5, EF4
DF4	MF, ADF1, DF3, EF5, EF6
DF5	MF, DF3, EF7
EF1	MF, DF1, EF-DIR
EF2	MF, DF1
EF3	MF, ADF1, DF3, DF4
EF4	MF, ADF1, DF3, DF5,
EF5	MF, DF4, ADF1, EF6
EF6	MF, DF4, ADF1, EF5
EF7	MF, DF3, DF5

8.4.2 SELECT by Path Referencing

A file, DF or EF, may be referenced by path, as defined in clause 8.3. Table 8.2 contains examples of selection by path from figure 8.6. In this example, it is considered that the current application (ADF1) has been previously selected by DF name. The FID of ADF1 is noted '7FFF' (see clause 8.5) in the table.

Table 8.2: Examples of file selection by path

Last-selected DF	Beginning-of the path	Example Selections
any	ME	'EF1', 'EF-DIR', 'DF1', 'DF1 EF2'
any	any	'7FFF DF3', '7FFF DF3 EF4', '7FFF DF3 DF5', '7FFF DF3 DF5 EF7', '7FFF DF4', '7FFF DF4 EF5', '7FFF DF4 EF6', '7FFF EF3'
DF1	Current-DF	'EF2'
DF3	Current-DF	'DF5', 'DF5 EF7', 'EF4'
DF4	Current-DF	'EF5', 'EF6'
DF5	Current-DF	'EF7'

8.4.3 Short File Identifier

Any EF within a DF can be implicitly selected without giving a SELECT command by applying one of the following commands at the DF or ADF level and giving a Short File Identifier (SFI) as a part of the command:

- READ BINARY;
- UPDATE BINARY;
- READ RECORD;
- UPDATE RECORD;
- INCREASE; or
- SEARCH RECORD.

Support of SFI for a specific file is indicated if the FCI of the file contains a TLV-D0 with tag '88'.

If the length is 0 it indicates that the file does not support the SFI.

TLV-D0 is absent indicates that the 5 least significant bits of the FID may be used as SFI.

SFI cannot be used in a path or as a file identifier e.g. in SELECT command.

When the READ RECORD command contains a valid SFI, it sets the file as the current EF and resets the current record pointer. Subsequent records are read with the READ RECORD command without SFI.

When the UPDATE RECORD command contains a valid SFI, it sets the file as the current EF and resets the current record pointer. Subsequent records are updates with the UPDATE RECORD command without SFI.

When the INCREASE command contains a valid SFI, it sets the file as the current EF and resets the current record pointer. Subsequent records are increased with the INCREASE command without SFI.

When the SEARCH RECORD command contains a valid SFI, it sets the file as the current EF and resets the current record pointer. Subsequent records are searched with the SEARCH RECORD command without SFI.

8.5 Application characteristics

An application may be either explicitly or implicitly referenced.

An application is activated by explicit selecting it with the AID. This sets the application's ADF as the current ADF.

A current ADF can be referenced by FID with the implicit reference value '7F FF'.

8.5.1 ~~Explicit Application selection~~

8.5.1.1 ~~SELECT by DF Name~~

A selectable application, represented in the UICC by the AID, shall be referenced by a DF name coded on 1 to 16 bytes. Each name shall be unique within a UICC. A DF name can be used in the SELECT command to select a selectable application.

8.5.1.2 ~~SELECT by partial DF Name~~

Selection by partial DF Name is for further study within 3GPP TSG T-WG3.

8.5.2 ~~Application session activation~~

The application session is initiated when the terminal sends a SELECT command, with the application's AID, indicating in the command parameters that the application shall be activated.

An application may need an initialisation procedure to be performed after its activation. This procedure is outside the scope of the present document but shall be described in the application specification. The procedure is used to bring the terminal and the application in the UICC to a well defined state.

The ME may send to the UICC a specific Status command indicating that the initialisation procedure of the application has been successfully executed.

There can only be one active session on a given logical channel.

8.5.3 ~~Application session termination~~

An application may have a session termination procedure to be performed before the application is terminated. This procedure shall be described in the application specification. Before this procedure is executed, the ME may send to the UICC a specific Status command indicating that the termination procedure of the application will start. After this termination procedure has been executed the terminal and the application are in a well defined state.

An application session is then terminated if one of the following events occur on the same logical channel that the application session has been activated on:

- implicitly; if a SELECT by DF_{NAME} command with an AID different from the currently active application is performed by the UICC, indicating in the command parameters that this new application shall be activated;
- explicitly; if the application is reselected using the SELECT by DF_{NAME} command with the AID corresponding to the currently active application, and indicating in the command parameters that the application shall be closed;
- the terminal performs a reset of the UICC.

8.5.4 ~~Application session reset~~

An application is reset if the application is reselected using the SELECT by DF_{NAME} command with the AID corresponding to the currently active application, indicating in the command parameters that the application shall be activated.

Reset initialises the application session activation procedure. The security status of the application is updated according to the application's session activation procedure, as specified by the application.

8.5.5 ~~GSM/USIM application interaction and restrictions~~

Activation of a USIM session excludes the activation of a GSM session. In particular, this implies that once a USIM application session has been activated, commands sent to the UICC with CLAss byte set to 'A0' shall return SW1SW2 '6E 00' (class not supported) to the terminal.

Similarly, activation of a GSM session excludes the activation of a USIM session.

At most one USIM session can be active at the same time.

8.6 Reservation of file IDs

The following FIDs are reserved by the present document:

ADF:

— operational use:

'7F FF'

Dedicated Files:

— administrative use:

'7F 4X', '5F 1X', '5F 2X'.

— operational use:

'7F 10' (DF_{TELECOM}), '7F 20' (DF_{GSM}), '7F 21' (DF_{DCS1800}), '7F 22' (DF_{IS-41}), '7F 23' (DF_{FP-CTS}), '7F 24' (DF_{TIA/EIA-136}), '7F 25' (DF_{TIA/EIA-95}) and '7F 2X', where X ranges from '6' to 'F'.

— NOTE: '7F 80' (DF_{PDC}) is used for the Japanese PDC specification.

'7F 90' (DF_{TETRA}) is used for the TETRA specification.

— reserved under '7F 10':

'5F 50' (DF_{GRAPHICS}); '5F 3A' (DF_{PHONEBOOK}).

Elementary files:

— administrative use:

'6F XX' in the DFs '7F 4X'; '4F XX' in the DFs '5F 1X', '5F 2X'.

'6F 1X' in the DFs '7F 10', '7F 20', '7F 21';

'4F 1X' in all 2nd level DFs.

'2F EX' in the MF '3F 00';

— operational use:

'6F 2X', '6F 3X', '6F 4X' in '7F 10' and '7F 2X';

'4F YX', where Y ranges from '2' to 'F' in all 2nd level DFs.

'2F 05', '2F 06' and '2F 1X' in the MF '3F 00'.

— operational use ISO/IEC 7816-4 [13]:

'2F 00' EF_{DIR}, '2F 01' EF_{ATR} in the MF '3F 00'.

In all the above, X ranges, unless otherwise stated, from '0' to 'F'.

9 Security features

Every application that conforms to this document may define security features in addition to the mandatory features defined in this clause.

9.1 Supported security features

A terminal that conforms to the present document and is designed for a multi-application UICC shall recognise the security attribute tags specified in the present document.

A single application terminal conforming to the present document shall support one of the access rules format specified in the present document. The application specifies which format is used.

A multi-application capability terminal that is designed to support a multi-application UICC shall support the usage of the level 1 verification requirements (PIN) and the level 2 verification requirements (PIN2). The coding is defined in table 9.3. The terminal shall, in addition, support the usage of a universal PIN as defined in the present document.

A multi-application-capability UICC conforming to the present document shall support more than one level 1 user verification requirement (PIN). The specific key reference for the level 1 PIN is specified by the application in accordance with table 9.3. In addition, the application may specify a level 2 user verification requirement (PIN2). A multi-application-capability UICC shall support the use of a universal PIN. A multi-application-capability UICC shall support access rules defined in security attributes indicated in tag '8B' (i.e. referenced to expanded format).

A single application UICC shall support one level 1 user verification requirement (PIN) as defined in table 9.3. In addition the application may specify a level 2 user verification requirement as a second application verification requirement (PIN2). A single application UICC may contain one or more selectable applications if there are no security aspects to be considered between the different selectable applications. From the security point of view only one level 1 verification requirement (PIN) is assigned to all ADFs/DFs and files on the UICC. In addition, a level 2 user verification requirement (PIN2) may be assigned on the application level. From the security and access rules point of view the UICC is seen as a single application card. The coding of the level 1 and level 2 user verification requirement shall be according to table 9.3.

9.2 Security architecture

An application on a UICC conforming to the present document shall specify a level 1 key reference as the user verification (PIN). In addition the application may specify a level 2 key reference as a second user verification requirement (PIN2). The coding of the level 1 and level 2 user verification requirement shall be according to table 9.3. In addition, an application may specify the usage of a universal PIN as a replacement for the application PIN.

In order to perform commands other than SELECT and STATUS the security condition for the file must be met. A security condition data object contains the conditions to be met in order to perform certain commands on a selected DF/EF.

The security architecture consists of the following parts:

- Security attributes; a set of access rules.
- Access rules; consist of an access mode and one or more security conditions.
- Access Mode (AM); indicates to which operations (commands) the security condition applies.
- Security Condition (SC); contains references to the applicable key references (PINs).

The following sub-clauses define the parts constituting the security architecture.

9.2.1 Security attributes

The security attributes are attached to a DF/EF and they are part of the FCP. The security attributes are indicated in the FCP using tag '8B', tag '8C' or tag 'AB' depending upon the format used, see ISO/IEC 7816-9 [17].

9.2.2 Access mode

The access mode byte/data object (AM byte/AM_DO) defines for which group/type of command(s) the security condition apply. The interpretation of the AM byte/AM_DO is file dependent (i.e. different for a DF and an EF), see ISO/IEC 7816-9 [17]. The command type/group is defined and coded according to ISO/IEC 7816-9 [17].

For instructions not belonging to a group as defined in ISO/IEC 7816-9 [17] the access rights can be indicated using AM_DO tags '81'—'8F'. The value of the tag defining the AM_DO indicates what description of the command exists in the definition list to follow in the value part of the data object. The coding of bit b4—b1 in the AM_DO tag is defined in ISO/IEC 7816-9 [17].

The security conditions for bits not set to '1' in the AM byte are set to NEVER by default.

9.2.3 Security condition

The Security Condition (SC) indicates which security-related procedures (user PIN verification) shall be satisfied before a command may be performed on a file. The SC is coded according to ISO/IEC 7816-9 [17].

9.2.4 Access rules

The access rule defines the security conditions for access to a file for each command/command group indicated in the AM byte/AM_DO. The security condition is indicated in the SC byte(s)/SC_DO(s) following the AM byte/AM_DO. The access rule is coded by using one or more AM bytes/AM_DOs each followed by one or more security conditions that are to be satisfied for the appropriate access.

The access rules may be coded in a compact or an expanded format. Furthermore, it is possible to combine one or more SCs to one AM such that at least one SC (the OR relation) shall be fulfilled before the command can be executed. It is possible to combine the SC such that more than one SC has to be fulfilled (the AND relation).

An access rule is a set of requirement(s) that shall be met in order to perform operations on a file. An access rule contains one or more security attributes, the AM byte/AM_DO in the attribute indicates what commands can be performed and the SC byte/SC_DO indicates what SC shall be met to be able to perform the commands indicated in the AM byte/AM_DO.

The CRT tags for SC_DOs are defined in ISO/IEC 7816-9 [17]. The SC required to perform commands indicated in the AM byte/AM_DO may be a simple condition or a logical OR or AND condition of several SC_DOs. The constructed TLV object containing AM bytes/AM_DOs and SC bytes/SC_DOs is an access rule. An access rule can be indicated in the FCP in one of the following ways:

- Tag '8C' Security attributes, compact format;
- Tag 'AB' Security attributes expanded format;
- Tag '8B' Security attributes. Referenced to expanded format.

9.2.5 Compact format

The compact format is indicated by tag '8C' in the FCP. In the compact format an access rule consists of an AM byte and one or more SC bytes as defined in ISO/IEC 7816-9 [17].

The AM byte conveys two types of information. The interpretation of the AM byte itself (coded on b8), and the number of SC bytes following, this is equal to the number of bits set to '1' in bits b7-b1 in the AM byte. If b8 in the AM byte is set to '0' the interpretation of bits b7-b1 is as defined in ISO/IEC 7816-9 [17]. If b8 in the AM byte is set to '1' the usage of bits b7-b4 is proprietary.

When multiple sets of an AM byte and one or more corresponding SC bytes are present in the value field they present an OR condition.

Example 1: — The access rule for READ always for an EF is coded using the compact format as follows:

Tag	L	AM	SC
'8C'	'02'	'04'	'00'

Example 2: — The access rule for UPDATE user PIN verification and READ always for an EF is coded using the compact format as follows:

Tag	L	AM	SC	SC
'8C'	'03'	'03'	'40'	'00'

9.2.6 Expanded format

The expanded format is indicated by tag 'AB' in the FCP. This tag indicates a constructed data object. In the expanded format an access rule consists of one AM_DO followed by a sequence of SC_DOs. The contents of the AM_DO is defined by the tag that it is indicated with, see ISO/IEC 7816-9 [17]. Tag '80' indicates that the AM_DO contains an AM byte. The sequence of SC_DOs following the AM_DO is relevant for all commands specified in the AM_DO. The different SC_DOs can form an OR or an AND condition as defined in ISO/IEC 7816-9 [17]. The information following tag 'AB' in the FCP can contain a lot of data if the rule is complex. This information is part of the FCP that is transmitted over the interface in the response to a SELECT or a STATUS command. The structure of the security attribute in expanded format is as follows:

Tag	length	AM_DO tag	AM_DO	SC_DO tag	SC_DO	AM_DO tag	AM_DO	SC_DO tag	SC_DO
'AB'		See ISO/IEC 7816-9		See ISO/IEC 7816-9		See ISO/IEC 7816-9		See ISO/IEC 7816-9	

An example using the expanded format coding is given in Annex E.

9.2.7 Access rule referencing

Access rules may be shared between files in the UICC by referencing. This is accomplished by storing the security attributes in the expanded format in a linear variable/fixed file, the Access Rule Reference, EF_{ARR}, in the UICC. The structure of the EF_{ARR} file is as follows:

Record Number (ARR)	Record Content (Access Rule)
'01'	AM_DO SC_DO ₁ SC_DO ₂ AM_DO SC_DO ₃ SC_DO ₄
'02'	AM_DO SC_DO ₁ AM_DO SC_DO ₃ SC_DO ₆

The referenced format is indicated in the FCP following tag '8B'. The access rule is stored in a file, EF_{ARR}. This file is a linear fixed/variable file. Referencing is based on the following two methods:

- File ID and record number (File ID, Record number).
- File ID, SE ID and record number (File ID, SE ID, Record number).

The second possibility allows the usage of different access rules in different security environments.

Referencing EF_{ARR} is based on the file ID. This implies that an EF_{ARR} exists under each DF. If a file with the file ID indicated in tag '8B' can not be found in the current DF the parent DF shall be used for searching for EF_{ARR}. The structure of the access rule referencing DO is as follows:

Tag	Length	Value
'8B'	'03'	File ID, record number
'8B'	'02' + n x '02'	File ID ₁ , SE ID _{n1} , Record number X, SE ID _{n2} , Record number Y,

Each record in EF_{ARR} contains a sequence of AM_DOs followed by SC_DOs. The content of the record is the rule that applies for access to the selected file. The content of a sample EF_{ARR} file is given in Annex F.

9.3 Security Environment

The security environment is a mechanism to specify for the card system the security functions that are available to provide protection to commands for a specific application of the card according to ISO/IEC 7816-8 [16]. In the referenced format it is possible to indicate different access rules as a function of the SE that is in use.

9.3.1 Definition of the Security Environment

In case the referenced format contains SEID as the referencing method the terminal shall evaluate the SEID and perform the appropriate user verification accordingly.

The following properties are mapped to SE01 (default SE) and SE00 (no authentication method required) for Release '99 (Card implementation):

SE-ID	Properties
'00'	The global Application PIN disabled (the Universal PIN is either disabled or not known)
'01'	The current global Application PIN is enabled or the Universal PIN is enabled but it is not to be used for verification and the global Application PIN is disabled

The above requirements are derived from table 9.1. A multi-application capability UICC shall support the use of SE00 and SE01 in order to allow application verification requirement to be replaced by the Universal PIN. A multi-application capability terminal shall support SEID referencing in EF_{ARR}.

Table 9.1: PIN-mapping into SE

PIN-to-verify			Universal-PIN-status	
			E	NE
APPL_PIN-status	E		APPL_PIN SE01	APPL_PIN SE01
	NE	UUP	Universal_PIN SE00	NO-PIN SE00
		DUUP	NO-PIN SE01	NO-PIN SE00
Key: — UUP: Use Universal PIN — DUUP: Don't Use Universal PIN				

9.4 PIN definitions

The following sub-clauses define the types of PIN that shall exist on a UICC, namely the Universal PIN and the application PIN, as well as other types of access conditions needed by the UICC/an application.

9.4.1 Universal PIN

A Universal PIN is a PIN that is used in a multi-application environment to allow several applications to share one common PIN. The Universal PIN is a global access condition that has been assigned a key reference value '11'. This key reference value shall not be used for anything else but to indicate the Universal PIN.

In order to give access to several applications on a multi-application UICC, a terminal conforming to the present document shall support the usage of the Universal PIN. A multi-application UICC according to the present document shall support the usage of a Universal PIN.

The Universal PIN shall be part of the access condition for each UICC application on a multi-application UICC that complies to the present document. In case of a single-application capability UICC the Universal PIN shall not be used.

9.4.2 Application PIN

An Application PIN is a PIN that uses a global key reference (defined as level 1 in table 9.2) as defined in table 9.3. The Application PIN allows access to any file on the UICC where it is referenced in the access rules. i.e. this PIN has global access rights with respect to files. It becomes an application PIN based on where it is assigned. An application, from the security context point of view, may consist of one ore more ADFs/DFs. In this case the ADFs/DFs are seen as one application from the security and access rules point of view. All operations performed on a PIN (enable/disable/replace) covering several ADFs/DFs affects the applications where the PIN is used and the access rules where the corresponding key reference is used.

9.4.3 Local PIN

A local PIN is a PIN that uses a local key reference it is only valid within the ADF/DF where it is indicated in the FCP. A local PIN is defined as level 2 in table 9.2 and coded as defined in table 9.3. A local PIN referenced in an ADF or a DF, which is not DF_{TELECOM}, does not give access to DF_{TELECOM}.

9.5 PIN and key reference relation ship

This subclause describes the relationship between the user verification requirement (PIN) and referencing to a PIN in the VERIFY, CHANGE, DISABLE/ENABLE VERIFICATION and UNBLOCK commands.

9.5.1 Access condition mapping

Access condition mapping, using SC_DOs, is done using the expanded format with the entries coded as CRT values, i.e. tag 'A4' is used. The CRT is a constructed TLV DO containing a usage qualifier TLV DO (tag '95') and a Key reference TLV DO (tag '83').

The access condition groups are defined according to table 9.2. Each group is divided into several key references. The usage of a key reference shall be in accordance with the group definition in table 9.2.

Table 9.2: Access condition level coding

Level	Access Condition
0	ALWays
1	User Verification (PIN)
2	see NOTE 1
3 to 4	Reserved for Future Use
5 to 6	see NOTE 2
7	NEVer
NOTE 1: This level is reserved for a second level of user verification (PIN2) that may be defined by an application.	
NOTE 2: Allocation of these levels and the respective requirements for their fulfilment are the responsibility of the appropriate administrative authority.	

The levels indicated in table 9.2 are used in this document to refer to a specific group of access conditions.

A key reference shall only be assigned for the purpose as it is defined in table 9.3. e.g., a level 1 key reference is always to be used for an application or a set of applications that share the same access conditions. A level 2 key reference is only valid within the ADF/DF where it is indicated.

Table 9.3: PIN-mapping into key references

CRT Tag	Len	Value						Access-Condition	Level
		Key-Ref Tag	Len	Value	Usage Qualifier Tag	Len	Val		
'90'	'00'	-	-	-	-	-	-	ALW	0
'A4'	'06'	'83'	'01'	'01'	'95'	'01'	'08'	PIN Appl-1	4
'A4'	'06'	'83'	'01'	'02'	'95'	'01'	'08'	PIN Appl-2	
'A4'	'06'	'83'	'01'	'03'	'95'	'01'	'08'	PIN Appl-3	
'A4'	'06'	'83'	'01'	'04'	'95'	'01'	'08'	PIN Appl-4	
'A4'	'06'	'83'	'01'	'05'	'95'	'01'	'08'	PIN Appl-5	4
'A4'	'06'	'83'	'01'	'06'	'95'	'01'	'08'	PIN Appl-6	
'A4'	'06'	'83'	'01'	'07'	'95'	'01'	'08'	PIN Appl-7	
'A4'	'06'	'83'	'01'	'08'	'95'	'01'	'08'	PIN Appl-8	
'XX'	'06'	'83'	'01'	'09'	'95'	'01'	'08'	RFU	
'A4'	'06'	'83'	'01'	'0A'	'95'	'01'	'08'	ADM1	5
'A4'	'06'	'83'	'01'	'0B'	'95'	'01'	'08'	ADM2	
'A4'	'06'	'83'	'01'	'0C'	'95'	'01'	'08'	ADM3	
'A4'	'06'	'83'	'01'	'0D'	'95'	'01'	'08'	ADM4	
'A4'	'06'	'83'	'01'	'0E'	'95'	'01'	'08'	ADM5	
'A4'	'06'	'83'	'01'	'11'	'95'	'01'	'08'	PIN Universal PIN	4
'XX'	'06'	'83'	'01'	'12-1E'	'95'	'01'	'08'	RFU (Global)	3
'A4'	'06'	'83'	'01'	'81'	'95'	'01'	'08'	Second PIN Appl-1	2
'A4'	'06'	'83'	'01'	'82'	'95'	'01'	'08'	Second PIN Appl-2	
'A4'	'06'	'83'	'01'	'83'	'95'	'01'	'08'	Second PIN Appl-3	
'A4'	'06'	'83'	'01'	'84'	'95'	'01'	'08'	Second PIN Appl-4	
'A4'	'06'	'83'	'01'	'85'	'95'	'01'	'08'	Second PIN Appl-5	2
'A4'	'06'	'83'	'01'	'86'	'95'	'01'	'08'	Second PIN Appl-6	
'A4'	'06'	'83'	'01'	'87'	'95'	'01'	'08'	Second PIN Appl-7	
'A4'	'06'	'83'	'01'	'88'	'95'	'01'	'08'	Second PIN Appl-8	
'A4'	'06'	'83'	'01'	'89'	'95'	'01'	'08'	RFU	
'A4'	'06'	'83'	'01'	'8A'	'95'	'01'	'08'	ADM6	6
'A4'	'06'	'83'	'01'	'8B'	'95'	'01'	'08'	ADM7	
'A4'	'06'	'83'	'01'	'8C'	'95'	'01'	'08'	ADM8	
'A4'	'06'	'83'	'01'	'8D'	'95'	'01'	'08'	ADM9	
'A4'	'06'	'83'	'01'	'8E'	'95'	'01'	'08'	ADM10	
'XX'	'06'	'83'	'01'	'90-9E'	'95'	'01'	'08'	RFU (Local)	4
'97'	'00'	-	-	-	-	-	-	NEV	7
NOTE — The CRT value 'XX' for RFU key references is specified at the time when the value is taken into use.									

A single application (from the security context point of view) capability UICC shall use key reference '01' as PIN and key reference '81' as PIN2. A multi-application capability UICC shall use one of the key references in the range of '01' to '08' as PIN and may use key references in the range from '81' to '88' as PIN2. In addition a multi-application capability UICC shall support the use of key reference '11' as a universal PIN, see subclause 9.3.1 for the definition of a universal PIN. Multi-applications (from the security context point of view) on a UICC shall not share any key references except for key reference '11', which is used as the universal PIN.

9.5.2 PIN status indication

The status of a PIN that is used by an application for user verification is stored in the PS Template DO and shall be indicated in the FCP in a response to the SELECT or STATUS command issued at the application/DF level. The PIN status information is indicated in the FCP in the PS template DO using tag 'C6'. The PS template DO conveys two types of data, first the PS_DO indicated by tag '90' that indicates the status of the PIN(s) enabled/disabled. The PS_DO is followed by one or more key reference data objects indicated by tag '83'. The PIN status may be encoded over several bytes. For each bit set to '1' the corresponding key reference (PIN) is enabled. The PS_DO is coded using a bitmap list. Bit b8 in the most significant byte corresponds to the first key reference indicated by tag '83' following the PS_DO. Bits b7-b1 are mapped to consecutive key references indicated by tag '83'. A key reference data object may be preceded by a usage qualifier data object. The usage qualifier data object indicated by tag '95' indicates whether an enabled PIN needs to be verified for access. The usage qualifier is intended to be used only in conjunction with the universal PIN, see

subclause 9.4.1. If the usage qualifier data object is empty or not present in conjunction with a key reference this indicates that the key reference following the usage qualifier do not support this feature, and it shall always be verified if enabled. The content of the PS_DO usage qualifier is defined in table 9.4. From table 9.4, the value to be used for user PIN verification is '08'.

Table 9.4: Usage qualifier coding for PS_DO

b8	b7	b6	b5	b4	b3	b2	b1	Meaning
0	0	0	0	0	0	0	0	the verification requirement is not used for verification
1	-	-	-	-	-	-	-	-use verification (DST, CCT) -use encipherment (CT) -use external authentication (AT)
-	1	-	-	-	-	-	-	-use computation (DST, CCT) -use decipherment (CT) -use internal authentication (AT)
-	-	1	-	-	-	-	-	-use SM response (CCT, CT, DST)
-	-	-	1	-	-	-	-	-use SM command (CCT, CT, DST)
-	-	-	-	1	-	-	-	-use the PIN for verification (Key Reference data user knowledge based)
-	-	-	-	-	1	-	-	-use user authentication, biometric based
-	-	-	-	-	-	x	x	RFU (default = 00)

The PS template DO is constructed as indicated in tables 9.5 and 9.6.

Table 9.5: PS Template DO structure

PS Template DO Tag	L	PS-DO Tag	L	V PS-byte(s)	Key-reference tag	L	V	Key-reference tag	L	V
'C6'		'90'			'83'	'01'		'83'	'01'	

Table 9.6: PS Template DO structure when PS_DO usage qualifier is used

PS Template DO Tag	L	PS-DO Tag	L	V PS-byte(s)	Usage Qualifier tag	L	V	Key-reference tag	L	V	Key-reference tag	L	V
'C6'		'90'			'95'	'01'		'83'	'01'		'83'	'01'	

10 Structure of commands and responses

This clause defines the command and response APDUs supported by the UICC.

10.1 Command APDU Structure

This clause states a generic structure of an application protocol data unit—APDU—that is used by the application protocol on the top of the transmission protocol for sending a command to the card.

A command APDU consists of a header and a body part. The contents of the command APDU are depicted in table 10.1 where the header consists of the CLA, INS, P1 and P2 bytes that are mandatory for a command APDU and an optional body part that can contain the Lc, Data and Le. Parameters are further explained in the following subclauses.

Table 10.1: Contents of Command APDU

Code	Length	Description	Grouping
CLA	1	Class of instruction	Header
INS	1	Instruction code	
P1	1	Instruction parameter 1	
P2	1	Instruction parameter 2	
Lc	0 or 1	Number of bytes in the command data field	Body
Data	Lc	Command data string	
Le	0 or 1	Maximum number of data bytes expected in response of the command	

Four cases of C APDU structure are possible as defined in table 10.2:

Table 10.2: Cases of C-APDUs

Case	Structure
1	CLA-INS-P1-P2
2	CLA-INS-P1-P2-Lc
3	CLA-INS-P1-P2-Lc-Data
4	CLA-INS-P1-P2-Lc-Data-Le

10.1.1 Coding of Class Byte

The most significant nibble of the Class byte (b8-b5) codes the type of the command as stated in table 10.2. Bits b4 and b3 are used for indication of secure messaging format (see table 10.4). Bits b2 and b1 indicates the logical channel used. Logical channels are numbered from 0 to 3. If the card supports the logical channel mechanism, the maximum number of available logical channels is indicated in the card capabilities data object of historical bytes of an ATR (refer to ISO/IEC 7816-4 [13]). If the card capabilities data object is missing, logical channel b2=b1=0 is supported only.

Table 10.3: Coding of Class Byte

b8	b7	b6	b5	b4	b3	b2	b1	Value	Meaning
0	0	0	0	-	-	-	-	'0X'	The coding is according to ISO/IEC 7816-4 [13]
1	0	1	0	-	-	-	-	'AX'	Coded as ISO/IEC 7816-4 [13] unless stated otherwise
1	0	0	0	-	-	-	-	'8X'	Structured as ISO/IEC 7816-4 [13], coding and meaning is defined in this specification
-	-	-	-	X	X	-	-	-	Secure Messaging indication (see table 10.4)
-	-	-	-	-	-	X	X	-	Logical channel number (see clause 10.3)

Table 10.4: Coding of Security Messaging Indication

b4	b3	Meaning
0	0	No SM used between Terminal and card
0	1	Proprietary SM format
1	x	Secure messaging according to ISO/IEC 7816-4 [13] used
1	0	Command header not authenticated
1	1	Command header authenticated

By default no secure messaging is supported by the card, i.e. b4=b3=0, unless it is stated otherwise by an application.

10.1.2 Coding of Instruction Byte

Table 10.5 depicts coding of instruction byte of the commands.

Table 10.5: Coding of Instruction Byte of the Commands for a telecom application

COMMAND	CLA	INS
Command APDUs		
SELECT FILE	0X	'A4'
STATUS	8X	'F2'
READ BINARY	0X	'B0'
UPDATE BINARY	0X	'D6'
READ RECORD	0X	'B2'
UPDATE RECORD	0X	'D6'
SEARCH RECORD	0X	'A2'
INCREASE	8X	'32'
VERIFY	0X	'20'
CHANGE PIN	0X	'24'
DISABLE PIN	0X	'26'
ENABLE PIN	0X	'28'
UNBLOCK PIN	0X	'2C'
DEACTIVATE FILE	0X	'04'
ACTIVATE FILE	0X	'44'
AUTHENTICATE	0X	'88'
TERMINAL PROFILE	80	'10'
ENVELOPE	80	'C2'
FETCH	80	'12'
TERMINAL RESPONSE	80	'14'
MANAGE CHANNEL	0X	'70'
Transmission oriented APDUs		
GET RESPONSE	0X	'C0'

10.1.3 Coding of Parameter Bytes

The value of the parameters P1 and P2 depends on the command. If the parameter is not used, the value is set to '00'. Coding of the parameter bytes is presented in the command definition sections.

10.1.4 Coding of Lc Byte

The number of data bytes present in the data field of the command APDU is presented in the parameter Lc. Lc is optional, in the command APDU, however if the Lc is present in the command APDU, data field consists of the Lc subsequent bytes. The terminal may send from 1 to 255 bytes of command data.

10.1.5 Coding of Data Part

When present in a command or response APDU the structure of the data field is specific to each command.

10.1.6 Coding of Le Byte

The maximum number of bytes expected in the data part of the response APDU is presented in the parameter Le, which is optional meaning that if the Terminal does not expect any data in the response APDU Le is absent from the command APDU. However, if Le is present in the command APDU, the data field of the response APDU is expected to consist of the Le bytes.

Le set to '00' indicates that the Terminal expects to receive at most the maximum number of bytes, i.e. 256, in the response ADPU. The UICC may return any number of bytes in the range 1 to 256.

10.2 Response APDU Structure

The response APDU consists of an optional data field and a mandatory status part divided into two bytes; SW1 and SW2. The number of bytes received in the response APDU is denoted Lr (length of the response data field). The structure of the response APDU is shown in table 10.6.

Table 10.6: Contents of Response APDU

Code	Length	Description
Data	Lr	Response data string
SW1	4	Status byte 1
SW2	4	Status byte 2

Coding of SW1 and SW2 is presented in 10.2.1.

10.2.1 Status Conditions Returned by the UICC

Status of the card after processing of the command is coded in the status bytes SW1 and SW2. This subclause specifies the coding of the status bytes.

10.2.1.1 Normal processing

Table 10.7: Status byte coding – normal processing

SW1	SW2	Description
'00'	'00'	— Normal ending of the command
'94'	'XX'	— Normal ending of the command, with extra information from the proactive UICC containing a command for the Terminal. Length 'XX' of the response data

10.2.1.2 Postponed processing

Table 10.8: Status byte coding – postponed processing

SW1	SW2	Error description
'93'	'00'	— SIM Application Toolkit is busy. Command cannot be executed at present, further normal commands are allowed.

10.2.1.3 Warnings

Table 10.9: Status byte coding – warnings

SW1	SW2	Description
'62'	'00'	—No information given, state of non-volatile memory unchanged
'62'	'81'	—Part of returned data may be corrupted
'62'	'82'	—End of file/record reached before reading Le bytes
'62'	'83'	—Selected file invalidated
'62'	'84'	—FCI not formatted according to subclause 11.1.1.3.1
'63'	'00'	—No information given, state of non-volatile memory changed
'63'	'81'	—File filled up by the last write
'63'	'CX'	—Command successful but after using an internal update retry routine 'X' times
		—Verification failed, 'X' retries remaining (see note)
NOTE:—For the VERIFY PIN command, SW1SW2 indicates that the command was successful but the PIN was not correct and there are 'X' retries left. For all other commands it indicates the number of internal retries performed by the card to complete the command.		

10.2.1.4 Execution errors

Table 10.10: Status byte coding – execution errors

SW1	SW2	Description
'64'	'00'	— No information given, state of non-volatile memory unchanged
'65'	'00'	— No information given, state of non-volatile memory changed
'66'	'81'	— Memory problem

10.2.1.5 Checking errors

Table 10.11: Status byte coding – checking errors

SW1	SW2	Description
'67'	'XX'	— Wrong length (see note)
'6B'	'00'	— Wrong parameter(s) P1-P2
'6D'	'00'	— Instruction code not supported or invalid
'6E'	'00'	— Class not supported
'6F'	'XX'	— Technical problem, no precise diagnosis
NOTE: — the interpretation of this status word is command dependent		

10.2.1.5.1 Functions in CLA not supported

Table 10.12: Status byte coding – functions in CLA not supported

SW1	SW2	Description
'68'	'00'	— No information given
'68'	'81'	— Logical channel not supported
'68'	'82'	— Secure messaging not supported

~~10.2.1.5.2 Command not allowed~~~~Table 10.13: Status byte coding – command not allowed~~

SW1	SW2	Description
'69'	'00'	— No information given
'69'	'81'	— Command incompatible with file structure
'69'	'82'	— Security status not satisfied
'69'	'83'	— Authentication/PIN method blocked
'69'	'84'	— Referenced data invalidated
'69'	'85'	— Conditions of used not satisfied
'69'	'86'	— Command not allowed (no EF selected)

~~10.2.1.5.3 Wrong parameters~~~~Table 10.14: Status byte coding – wrong parameters~~

SW1	SW2	Description
'6A'	'80'	— Incorrect parameters in the data field
'6A'	'81'	— Function not supported
'6A'	'82'	— File not found
'6A'	'83'	— Record not found
'6A'	'85'	— Lc inconsistent with TLV structure
'6A'	'86'	— Incorrect parameters P1-P2
'6A'	'87'	— Lc inconsistent with P1-P2
'6A'	'88'	— Referenced data not found

~~10.2.1.6 Application errors~~~~Table 10.15: Status byte coding – application errors~~

SW1	SW2	Error description
'98'	'50'	— INCREASE cannot be performed, max value reached.
'98'	'62'	— Authentication error, application specific

~~NOTE: Applications may define their own error codes.~~

~~10.2.2 Status Words of the Commands~~

~~The following table shows for each command the possible status conditions returned (marked by an asterisk *).~~

Table 10.16: Commands and status words

Status Words	SELECT	STATUS	UPDATE BINARY	UPDATE RECORD	READ BINARY	READ RECORD	SEARCH RECORD	INCREASE	VERIFY PIN	CHANGE PIN	DISABLE PIN	ENABLE PIN	UNBLOCK PIN	DEACTIVATE FILE	ACTIVATE FILE	AUTHENTICATE	TERMINAL PROFILE	ENVELOPE	FETCH	TERMINAL RESPONSE	MANAGE CHANNEL
90-00	*	*	*	*	*	*	*	*	*	*	*	*	*	*	*	*	*	*	*	*	*
91-XX	*	*	*	*	*	*	*	*	*	*	*	*	*	*	*	*	*	*	*	*	*
93-00	*	*	*	*	*	*	*	*	*	*	*	*	*	*	*	*	*	*	*	*	*
98-50								*													
98-62																*					
62-00	*	*	*	*	*	*	*	*	*	*	*	*	*	*	*	*	*	*	*	*	*
62-81					*	*	*														
62-82					*	*	*														
62-83	*	*			*	*	*							*							
62-84	*	*																			
63-00									*	*	*	*	*	*	*	*	*	*	*	*	*
63-CX			*	*	*	*	*	*	*	*	*	*	*	*	*	*	*	*	*	*	*
64-00	*	*	*	*	*	*	*	*	*	*	*	*	*	*	*	*	*	*	*	*	*
65-00			*	*	*	*	*	*	*	*	*	*	*	*	*	*	*	*	*	*	*
65-81			*	*	*	*	*	*	*	*	*	*	*	*	*	*	*	*	*	*	*
67-00			*	*	*	*	*	*	*	*	*	*	*	*	*	*	*	*	*	*	*
69-81			*	*	*	*	*	*	*	*	*	*	*	*	*	*	*	*	*	*	*
69-82			*	*	*	*	*	*	*	*	*	*	*	*	*	*	*	*	*	*	*
69-83					*	*	*	*	*	*	*	*	*	*	*	*	*	*	*	*	*
69-84			*	*	*	*	*	*	*	*	*	*	*	*	*	*	*	*	*	*	*
69-85					*	*	*	*	*	*	*	*	*	*	*	*	*	*	*	*	*
69-86			*	*	*	*	*	*	*	*	*	*	*	*	*	*	*	*	*	*	*
6A-81	*	*	*	*	*	*	*	*	*	*	*	*	*	*	*	*	*	*	*	*	*
6A-82	*	*	*	*	*	*	*	*	*	*	*	*	*	*	*	*	*	*	*	*	*
6A-83			*	*	*	*	*	*	*	*	*	*	*	*	*	*	*	*	*	*	*
6A-86	*	*	*	*	*	*	*	*	*	*	*	*	*	*	*	*	*	*	*	*	*
6A-87	*	*	*	*	*	*	*	*	*	*	*	*	*	*	*	*	*	*	*	*	*
6A-88					*	*	*	*	*	*	*	*	*	*	*	*	*	*	*	*	*
6B-00	*	*	*	*	*	*	*	*	*	*	*	*	*	*	*	*	*	*	*	*	*
6E-00	*	*	*	*	*	*	*	*	*	*	*	*	*	*	*	*	*	*	*	*	*
6F-00	*	*	*	*	*	*	*	*	*	*	*	*	*	*	*	*	*	*	*	*	*

The responses '91-XX', and '93-00' can only be given by a UICC to a Terminal supporting USAT (see 3G TS 31.111 [4]).

10.3 Logical channels

Only the basic channel is currently used.

11 Commands

11.1 Generic commands

This subclause lists the basic command and response APDU formats that are supported by applications residing on a UICC. Commands used to manage an application are not defined in the present document.

In the subsequent subclauses, only the response data is listed. For the coding of the status words, see subclause 10.2.

11.1.1 ~~SELECT~~

11.1.1.1 ~~Functional description~~

This function selects a file according to the methods described in clause 8.4. After a successful selection the record pointer is undefined.

Input:

— file ID, application ID, path or empty;

Output:

— if the selected file is the MF, a DF or an ADF:

— file ID, total memory space available, PIN enabled/disabled indicator, PIN status and other application specific data;

— if the selected file is an EF:

— file ID, file size, access conditions, invalidated/not invalidated indicator, structure of EF and length of the records in case of linear fixed structure or cyclic structure.

11.1.1.2 ~~Command Parameters and Data~~

Code	Value
CLA	As specified in 10.1.1
INS	As specified in 10.1.2
P1	Selection control, see table 11.1
P2	Selection control, see table 11.2
Le	Length of subsequent data field or empty
Data	File ID, DF name, or path to file, according to P1
Le	Empty, '00', or maximum length of data expected in response

Table 11.1: Coding of P1

b8	b7	b6	b5	b4	b3	b2	b1	Meaning
0	0	0	0	0	0	0	0	Select DF, EF or MF by file id
0	0	0	0	0	0	0	1	Select child DF of the current DF
0	0	0	0	0	0	1	1	Select parent DF of the current DF
0	0	0	0	0	1	0	0	Selection by DF name — see NOTE
0	0	0	0	1	0	0	0	Select by path from MF
0	0	0	0	1	0	0	1	Select by path from current DF

NOTE: — This is selection by AID

Table 11.2: Coding of P2

b8	b7	b6	b5	b4	b3	b2	b1	Meaning
-	X	X	-	-	-	-	-	Application session control, see note 2.
-	0	0	-	-	-	-	-	— Activation/Reset
-	1	0	-	-	-	-	-	— Termination
0	-	-	0	0	1	0	0	Return FCP template
0	-	-	0	1	1	0	0	No data returned

NOTE1: — Whether the FCI information is returned or not depends on the type of APDU

NOTE2: — This only applies when P1 indicates SELECT by DF_{NAME}

To avoid ambiguities when P1=P2='00', the following search order applies when selecting a file with a File ID (FID) as a parameter:

- immediate children of the current DF;
- the parent DF;
- the immediate children of the parent DF.

11.1.1.3 Response Data

Byte(s)	Description	Length
4	FCP template tag = '62'	4
2 (to 3)	Length of FCP template	1 or 2
3 or 4 to L _r	FCP template	X

The response data contains the File Control Parameters (FCP) template of the selected file. The contents of the FCP depends on the selected file. See below for the list of TLV that are returned in each case.

The value part of the FCP template data object consists of data objects, as shown in the subclause below. It is mandatory for data objects to be provided in the order given in the description of each response. New data objects can be added to the end of the response data. The terminal shall ignore Data Objects with tags it does not support.

11.1.1.3.1 Response for MF, DF or ADF

This subclause lists the TLVs returned when an MF, DF or ADF is selected.

Table 11.3: Response for MF, DF, or ADF with FCP Template

Description	Tag	Section	Status
File Descriptor	'82'	11.1.1.4.3	M
File Identifier	'83'	11.1.1.4.4	C1
DF name (AID)	'84'	11.1.1.4.5	C2
Proprietary information	'A5'	11.1.1.4.6	M
Life Cycle Status Integer	'8A'	11.1.1.4.9	M
Security attributes	'86', '8B', '8C' or 'AB'	11.1.1.4.7	C3
PIN Status Template DO	'C6'	11.1.1.4.10	M
Total file size	'81'	11.1.1.4.2	O
M: Mandatory O: Optional C1: The File identifier is mandatory for a DF or the MF. For a ADF the File identifier is optional. C2: DF name is mandatory for only ADF. C3: Exactly one shall be present.			

11.1.1.3.2 Response for an EF

This subclause lists the TLVs returned when an EF is selected.

Table 11.4: Response for an EF with FCP Template

Description	Tag	Subclause	Status
File Descriptor	'82'	11.1.1.4.3	M
File Identifier	'83'	11.1.1.4.4	M
Proprietary information	'A5'	11.1.1.4.6	M
Security attributes	'86', '8B', '8C', or 'AB'	11.1.1.4.7	C1
Life Cycle Status Integer	'8A'	11.1.1.4.9	M
File size	'80'	11.1.1.4.1	M
Total file size	'81'	11.1.1.4.2	O
Short file identifier (SFI)	'88'	11.1.1.4.8	O
M: Mandatory. O: Optional. C1: Exactly one shall be present.			

11.1.1.4 File Control Parameters

11.1.1.4.1 File size

Byte(s)	Description	Value	Length
1	Tag	'80'	4
2	Length	'02'	4
3 to 4	Number of data bytes in the file, excluding structural information		2

The range of file size is between '0000' and 'FFFF' and the most significant byte comes first in the value field.

For transparent EF, file size is the length of the body part of the EF, and for linear fixed or cyclic EF, it is the record length multiplied by the number of records of the EF.

11.1.1.4.2 Total file size

Byte(s)	Description	Value	Length
1	Tag	'81'	4
2	Length	'02'	4
3 to 4	Number of data bytes in the file, including structural information if any.		2

The range of total file size is between '0000' and 'FFFF' and the most significant byte comes first in the value field.

11.1.1.4.3 File Descriptor

Byte(s)	Description	Status	Value	Length
1	Tag	M	'82'	4
2	Length	M	'02' or '05'	4
3	File descriptor byte (see table 11.5)	M		4
4	Data coding byte	M	'20'	4
5 to 6	Record length	C	'0001' to '00FF'	2
7	Number of records	C	'01' to 'FE'	4
M: Mandatory. C: These bytes are mandatory for linear fixed and cyclic files, otherwise they are not applicable.				

— File descriptor:

Contents: File descriptor specifies the file accessibility, and the file type and structure.

Coding: see table below:

Table 11.5: File descriptor byte

b8	b7	b6	b5	b4	b3	b2	b1	Meaning
0	X	-	-	-	-	-	-	File accessibility
0	0	-	-	-	-	-	-	Not shareable file
0	1	-	-	-	-	-	-	Shareable file
0	-	X	X	X	-	-	-	File type
0	-	0	0	0	-	-	-	Working-EF
0	-	0	0	1	-	-	-	Internal-EF
0	-	0	1	0	-	-	-	RFU
0	-	0	1	1	-	-	-	
0	-	1	0	0	-	-	-	
0	-	1	0	1	-	-	-	
0	-	1	1	0	-	-	-	
0	-	1	1	1	-	-	-	DF or ADF
0	-	-	-	-	X	X	X	EF structure
0	-	-	-	-	0	0	0	No information given
0	-	-	-	-	0	0	1	Transparent
0	-	-	-	-	0	1	0	Linear fixed
0	-	-	-	-	0	1	1	RFU
0	-	-	-	-	1	0	0	
0	-	-	-	-	1	0	1	
0	-	-	-	-	1	1	0	Cyclic
0	-	-	-	-	1	1	1	RFU
1	X	X	X	X	X	X	X	RFU

— Data coding byte:

Coding: The data coding byte can be used different according to table 86 in ISO/IEC 7816-4 [13]. For the present document, the value '20' (proprietary) is defined as "don't care" and the byte shall not be used by the UICC.

— Record length:

Contents: record length specifies the length of a record when a record structured file has been selected.

— Coding: the record length shall be present if a record structured file (i.e. for linear fixed or cyclic files) is selected. In this case it indicates the length the records on 2 bytes. Most significant byte comes first in the value field.

— Number of records:

Contents: number of records specifies the number of records in a record structured file.

Coding: the number of records shall be present if a record structured file (i.e. for linear fixed or cyclic files) is selected. In this case it indicates the number of records on 1 byte.

11.1.1.4.4 File identifier

Byte(s)	Description	Value	Length
1	Tag	'83'	1
2	Length	'02'	1
3 to 4	File identifier		2

11.1.1.4.5 DF name

Byte(s)	Description	Value	Length
1	Tag	'84'	1
2	Length	$1 \leq X \leq 16$	1
3 to 2+X	DF name		X

DF name is a string of bytes, the AID, which is used to uniquely identify an application dedicated file in the card.

11.1.1.4.6 — Proprietary information

This is a constructed TLV object.

Byte(s)	Description	Length
1	Proprietary information-constructed Tag = 'A5'	1
2	Length	1
3 to 2+X	Proprietary data, constructed	X

The following TLV objects are defined for the proprietary template (tag 'A5'):

Description	Tag	Status	Clause
UICC characteristics	'80'	M	11.1.1.4.6.1
Application power consumption	'81'	O	11.1.1.4.6.2
M: Mandatory O: Optional			

An application may supply more than one Application power consumption Data Object.

11.1.1.4.6.1 — UICC characteristics

Byte(s)	Description	Value	Length
1	Tag	'80'	1
2	Length	'01'	1
3	UICC characteristics byte (see table 11.6)		1

Table 11.6: UICC characteristics byte

b8	b7	b6	b5	b4	b3	b2	b1	Meaning
-	-	-	-	X	X	-	1	Clock stop allowed
-	-	-	-	0	0	-	1	No preferred level
-	-	-	-	0	1	-	1	High level preferred
-	-	-	-	1	0	-	1	Low level preferred
-	-	-	-	1	1	-	1	RFU
-	-	-	-	X	X	-	0	Clock stop not allowed
-	-	-	-	0	0	-	0	Never
-	-	-	-	0	1	-	0	Unless at high level
-	-	-	-	1	0	-	0	Unless at low level
-	-	-	-	1	1	-	0	RFU
-	-	-	X	-	-	-	-	Supply voltage class A
-	-	X	-	-	-	-	-	Supply voltage class B
-	X	-	-	-	-	-	-	Supply voltage class C
X	-	-	-	-	-	X	-	RFU (shall be set to 0)

If bit b1 is coded '1', stopping the clock is allowed at high or low level. In this case bit b3 and b4 give information about the preferred level (high or low, respectively) at which the clock may be stopped.

If b1 is coded '0', the clock may be stopped only if the mandatory condition b3 = '1' (i.e. stop at high level) or b4 = '1' (i.e. stop at low level) is fulfilled. If all 3 bits are coded '0', then the clock shall not be stopped.

A supply voltage class, as defined in subclause 6.2.1, is supported if the bit is coded as a '1'. If the voltage class is not supported the bit is coded as '0'.

11.1.1.4.6.2 — Application power consumption

The application power consumption is indicated by tag '81' within the constructed TLV object. The first byte indicates the supply voltage at which the power consumption is measured. The coding of this byte is the same as for the supply voltage class indication in the ATR, see table 6.1. Unused bits are set to RFU. The second byte indicates the power consumption in mA. Bits b8-b7 are RFU. Bits b6-b1 indicates the power consumption of the application in mA. The

power consumption is measured at the frequency indicated in the 'Power consumption reference frequency' field for the application, averaged over 1 ms or at the maximum clock frequency supported by the UICC if no indication is given. The terminal shall ignore the application power consumption values '00' and 'FF'. A value higher than 3C shall not be interpreted by the terminal and is not to be used. The terminal may still accept the application.

The terminal shall evaluate the power consumption value given in the response. If the power supply class indicated in the response is not the currently used the terminal shall recalculate the value to the currently used supply voltage class. The terminal shall accept the application if the recalculated value is within the specification limits set for the currently used supply voltage class. The terminal may accept an application that exceeds the specified value if it can support the power consumption indicated by the application.

Byte(s)	Description	Value	Length
1	Tag	'81'	4
2	Length	'03'	4
3	Supply voltage class at which the power consumption is measured		4
4	Application power consumption	'01-3C'	4
5	Power consumption Reference Frequency	'0A'-FF'	4

The Power consumption Reference Frequency is coded in Hexadecimal format. The resolution is 0.1 MHz, i.e. '0A' is 1 MHz and 'FE' is 25.4 MHz. The value 'FF' indicates that no reference frequency is indicated.

11.1.1.4.7 Security attributes

11.1.1.4.7.1 Compact Format

Byte(s)	Description	Value	Length
1	Tag	'8C'	4
2	Length	X	4
3	AM byte		4
X+1	SC bytes		X+2

The value of the AM byte is defined in ISO/IEC 7816-9 [17]. The amount of SC bytes depends upon the value of the AM byte. There shall be a SC byte present for each bit set to '1' in the AM byte except for b8. The value of the SC byte is defined in ISO/IEC 7816-9.

11.1.1.4.7.2 Expanded Format

Byte(s)	Description	Value	Length	Comment
1	Tag	'AB'	4	
2	Length	X-2	4	
3	AM_DO tag	'8X' see NOTE1	4	Security Rule #1
4	Length	X	4	
5+X	AM_DO	NOTE 2	X	
6+X	SC_DO tag	NOTE2	4	
7+X	Length	Y	4	
8+X+Y	SC_DO	NOTE2	Y	
<div> <div>.....</div> <div>.....</div> <div>.....</div> </div>				
3	AM_DO tag	'8X' see NOTE1	4	Security Rule #N
4	Length	W	4	
5+W	AM_DO	NOTE 2	W	
6+W	SC_DO tag	NOTE2	4	
7+W	Length	Z	4	
8+W+Z	SC_DO	NOTE2	Z	
NOTE1: The value of 'X' is dependent on the usage of the AM_DO see 7816-9 [17]. NOTE2: The value of the AM_DO and the SC_DO is defined in ISO/IEC 7816-9 [17].				

~~11.1.1.4.7.3~~ ~~Referenced to Expanded Format~~

~~If the length of the data following tag '8B' = '03' the following definition applies:~~

Byte(s)	Description	Value	Length
1	Tag	'8B'	4
2	Length	3	4
3-4	EF_{ARR} File ID		2
5	EF _{ARR} Record number		4

~~If the length of the data following tag '8B' is '02' + X x '02' the following definition applies:~~

Byte(s)	Description	Value	Length
1	Tag	'8B'	1
2	Length	'02' + X x '02'	1
3—4	EF _{ARR} File ID		2
X+4	SEID		1
X+5	EF _{ARR} Record number		
NOTE: For each increment of X a new set of SEID and an EF _{ARR} Record numbers are introduced			

~~11.1.1.4.8 Short file identifier~~

Byte(s)	Description	Value	Length
1	Tag	'88'	4
2	Length	'00' or '01'	4
3	Short file identifier		0 or 1

~~If the TLV is not present, the SFI value is the 5 least significant bits (bits b5 to b1) of the file identifier.~~

~~If the TLV is present but empty (i.e. length is 0), the SFI is not supported for the selected file.~~

If the length of the TLV is 1, the SPI value is indicated in the 5 most significant bits (bits b8 to b4) of the TLV value field. In this case, bits b3 to b1 shall be set to 0.

~~11.1.1.4.9 Life Cycle Status Integer~~

Byte(s)	Description	Value	Length
1	Tag	'8A'	4
2	Length	4	4
3	Life Cycle Status Integer, see table 11.7		4

~~Table 11.7: Coding of Life Cycle Status Integer~~

[illegible]

11.1.1.4.10 — PIN status template DO

This TLV object contains the PIN status information for a DF and which PINs are used for access to the DF and its child EFs. PIN is indicated in this data object using the key reference tag '83' as defined in ISO/IEC 7816 4 [13]. The content of the constructed PIN status TLV Data Object tag 'C6' depends on the length (see below).

Byte(s)	Description	Value	Length
1	Tag	'C6'	4
2	Length		4
3	PS_DO tag	'00'	4
4	Length	X	4
X+4	PS_DO		X
X+5	Usage qualifier DO tag, see NOTE 2	'05'	4
X+6	Length	'01'	4
X+7	Usage qualifier, see section 9.C.1		4
X+8	Key reference tag	'83'	4
X+9	Length	'01'	4
X+10	Key reference (PIN)	See table 9.A.2	4

NOTE1: There may be one or more key reference tags following the PS_DO.

NOTE2: This is optional.

The usage qualifier DO indicates if the key reference data object (PIN) following it is to be used for verification or not. If this data object is present it shall precede the key reference data object it is associated with.

For the PS_DO coding see subclause 9.C.1. For each bit set to '1' in the PS byte there shall be a corresponding key reference in the PS_DO. The number of key reference tags (tag '83') indicates how many different PINs are used for access in the selected DF and its children.

11.1.2 — STATUS

11.1.2.1 — Functional description

This function returns information concerning the current directory or current application.

In addition, according to the application specification, it may be used to indicate to the application in the UICC that its session activation procedure has been successfully executed or that its termination procedure will be executed.

NOTE: these indications may be used to synchronise the applications in the ME and in the UICC.

Input:

— none.

Output:

— One of the following:

— FCP of the current directory;

— The DF_{NAME} TLV Data Object of the currently selected application;

— No data returned.

11.1.2.2 — Command parameters

Code	Value
CLA	As specified in 10.1.1.
INS	As specified in 10.1.2.
P1	Indication of application status (see table 11.8)
P2	See table 11.9.
Le	Empty, '00', or maximum length of data expected in response.

Table 11.8: Coding of P1

b8	b7	b6	b5	b4	b3	b2	b1	Meaning
0	0	0	0	0	0	0	0	No indication
0	0	0	0	0	0	0	1	Current application is initialised in the ME
0	0	0	0	0	0	1	0	ME will initiate the termination of the current application

Table 11.9: Coding of P2

b8	b7	b6	b5	b4	b3	b2	b1	Meaning
0	0	0	0	0	0	0	0	Response parameters and data are identical to the response parameters and data of the SELECT command.
0	0	0	0	0	0	0	1	The DF _{NAME} -TLV-object of the currently selected application is returned.
0	0	0	0	1	1	0	0	No data returned.
Any other value								RFU.

11.1.3—READ BINARY

11.1.3.1—Functional description

This function reads a string of bytes from the current transparent EF. This function shall only be performed if the READ access condition for this EF is satisfied.

If the command is applied to an EF without transparent structure then the command shall be aborted.

Input:

—relative address and the length of the string.

Output:

—string of bytes.

11.1.3.2—Command parameters

Code	Value
CLA	As specified in 10.1.1.
INS	As specified in 10.1.2.
P1	See table 11.10.
P2	Offset low.
Le	Not present.
Data	Not present.
Le	Number of bytes to be read.

Table 11.10: Coding of P1

b8	b7	b6	b5	b4	b3	b2	b1	Meaning
0	X	X	X	X	X	X	X	b7-b1 is the offset to the first byte to read— P2 is the low part of the offset
1	0	0	X	X	X	X	X	SFI referencing used, b1-b5 are the SFI and P2 is the offset to the first byte to read

Response data:

Byte(s)	Description	Length
1—Le	Data read	Le

11.1.4 UPDATE BINARY

11.1.4.1 Functional parameters

This function updates the current transparent EF with a string of bytes. This function shall only be performed if the UPDATE access condition for this EF is satisfied. An update can be considered as a replacement of the string already present in the EF by the string given in the update command.

- Input:
- relative address and the length of the string;
 - string of bytes.
- Output:
- none.

11.1.4.2 Command parameters and data

Code	Value
CLA	As specified in 10.1.1
INS	As specified in 10.1.2
P1	See table 11.10
P2	Offset low
Le	Length of the subsequent data field
Data	String of data to be updated
Le	Not present

Coding of parameter P1 and P2 are identical to the coding of P1 and P2 in the READ BINARY command.

11.1.5 READ RECORD

11.1.5.1 Functional description

This function reads one complete record in the current linear fixed or cyclic EF. The record to be read is described by the modes below. This function shall only be performed if the READ access condition for this EF is satisfied. The record pointer shall not be changed by an unsuccessful READ RECORD function.

Four modes are defined:

- CURRENT:** The current record is read. The record pointer is not affected.
- ABSOLUTE:** The record given by the record number is read. The record pointer is not affected.
- NEXT:** The record pointer is incremented before the READ RECORD function is performed and the pointed record is read. If the record pointer has not been previously set within the selected EF, then READ RECORD (next) shall read the first record and set the record pointer to this record.
 - If the record pointer addresses the last record in a linear fixed EF, READ RECORD (next) shall not cause the record pointer to be changed, and no data shall be read.
 - If the record pointer addresses the last record in a cyclic EF, READ RECORD (next) shall set the record pointer to the first record in this EF and this record shall be read.

PREVIOUS: The record pointer is decremented before the READ RECORD function is performed and the pointed record is read. If the record pointer has not been previously set within the selected EF, then READ RECORD (previous) shall read the last record and set the record pointer to this record.

— If the record pointer addresses the first record in a linear fixed EF, READ RECORD (previous) shall not cause the record pointer to be changed, and no data shall be read.

— If the record pointer addresses the first record in a cyclic EF, READ RECORD (previous) shall set the record pointer to the last record in this EF and this record shall be read.

Input:

— mode, record number (absolute mode only) and the length of the record.

Output:

— the record.

11.1.5.2 Command parameters

Code	Value
CLA	As specified in 10.1.1.
INS	As specified in 10.1.2.
P1	Record number.
P2	Mode, see table 11.11.
Le	Not present.
Data	Not present.
Le	Number of bytes to be read.

Table 11.11: Coding of P2

b8	b7	b6	b5	b4	b3	b2	b1	Meaning
0	0	0	0	0	-	-	-	Currently selected EF
X	X	X	X	X	-	-	-	Short File identifier (from 1 to 30)
-	-	-	-	-	0	1	0	Next record
-	-	-	-	-	0	1	1	Previous record
-	-	-	-	-	1	0	0	Absolute/ current mode, the record number is given in P1 with P1='00' denoting the current record

For the modes "next" and "previous" P1 has no significance within the scope of this specification and shall be set to '00' by the Terminal.

Response data:

Byte(s)	Description	Length
1—Le	Data read	Le

11.1.6 UPDATE RECORD

11.1.6.1 Functional description

This function updates one specific, complete record in the current linear fixed or cyclic EF. This function shall only be performed if the UPDATE access condition for this EF is satisfied. The UPDATE can be considered as a replacement of the relevant record data of the EF by the record data given in the command. The record pointer shall not be changed by an unsuccessful UPDATE RECORD function.

The record to be updated is described by the modes below. Four modes are defined of which only PREVIOUS is allowed for cyclic files:

— **CURRENT:** The current record is updated. The record pointer is not affected.

- **ABSOLUTE:** The record given by the record number is updated. The record pointer is not affected.
- **NEXT:** The record pointer is incremented before the UPDATE RECORD function is performed and the pointed record is updated. If the record pointer has not been previously set within the selected EF, then UPDATE RECORD (next) shall set the record pointer to the first record in this EF and this record shall be updated. If the record pointer addresses the last record in a linear fixed EF, UPDATE RECORD (next) shall not cause the record pointer to be changed, and no record shall be updated.
- **PREVIOUS:** For a linear fixed EF the record pointer is decremented before the UPDATE RECORD function is performed and the pointed record is updated. If the record pointer has not been previously set within the selected EF, then UPDATE RECORD (previous) shall set the record pointer to the last record in this EF and this record shall be updated. If the record pointer addresses the first record in a linear fixed EF, UPDATE RECORD (previous) shall not cause the record pointer to be changed, and no record shall be updated.
- For a cyclic EF the record containing the oldest data is updated, the record pointer is set to this record and this record becomes record number 1.

Input:

- mode, record number (absolute mode only) and the length of the record;
- the data used for updating the record.

Output:

- none.

11.1.6.2 Command parameters and data

Code	Value
CLA	As specified in 10.1.1.
INS	As specified in 10.1.2.
P1	Record number.
P2	Mode, see table 11.11.
Le	Length of the subsequent data field.
Data	String of data to be updated.
Le	Not present.

Coding of parameter P2 is identical to the coding of P2 in READ RECORD command.

For the modes "next" and "previous" P1 has no significance and shall be set to '00' by the Terminal. To ensure backward compatibility, the UICC shall not interpret the value given by the Terminal.

11.1.7 SEARCH RECORD

11.1.7.1 Functional description

This function searches through a linear fixed or cyclic EF to find record(s) containing a specific pattern. This function shall only be performed if the READ access condition for this EF is satisfied. The search starts:

- either at the first byte of the record(s) (simple search); or
- from a given offset in the record(s); or
- from the first occurrence of a given byte in the record(s).

The response is either empty or contains the, up to the Le specified number of, record number(s) of the records that matches the search in the selected EF.

If one or more matches are found the record pointer shall be set to the first record where the search pattern was found.

Input:

- search mode (simple/enhanced);
- offset;
- pattern.

Output:

- either none, if Le is empty or no matches where found; or
- at most the number of record(s) number(s) defined in Le.

11.1.7.2 Command parameters and data

Code	Value
CLA	As specified in 10.1.1.
INS	As specified in 10.1.2.
P1	Record number.
P2	See table 11.12.
Le	Length of the subsequent data field.
Data	<ul style="list-style-type: none">— Simple search : search string— Enhanced search : search indication (2 bytes) followed by search string— Proprietary search : proprietary data
Le	Empty or maximum length of response data.

Table 11.12: Coding of P2

b8	b7	b6	b5	b4	b3	b2	b1	Meaning
0	0	0	0	0	-	-	-	Currently selected EF.
X	X	X	X	X	-	-	-	Short File Identifier.
1	1	1	1	1	-	-	-	RFU.
-	-	-	-	-	0	X	X	RFU—see NOTE.
-	-	-	-	-	1	0	X	Simple search. Usage of P1 as a record number.
-	-	-	-	-	1	0	0	Start forward search from record indicated in P1.
-	-	-	-	-	1	0	1	Start backward search from record indicated in P1.
-	-	-	-	-	1	1	0	Enhanced search—see table 11.13.
-	-	-	-	-	1	1	1	Proprietary search.
NOTE:—This value is reserved by ISO/IEC 7816-9 [17].								

Table 11.13: Coding of the first byte of the search indication for enhanced search mode

b8	b7	b6	b5	b4	b3	b2	b1	Meaning
-	-	-	-	0	-	-	-	The search starts in the record from the offset (absolute position) given in the second byte of the search indication.
-	-	-	-	1	-	-	-	The search starts in the record after the first occurrence of the value contained in the second byte of the search indication.
-	-	-	-	-	0	X	X	RFU—see NOTE.
-	-	-	-	-	1	X	X	Usage of value of P1 as a record number.
-	-	-	-	-	1	0	0	Start forward search from record indicated in P1.
-	-	-	-	-	1	0	1	Start backward search from record indicated in P1.
-	-	-	-	-	1	1	0	Start forward search from next record.
-	-	-	-	-	1	1	1	Start backward search from previous record.
Any other value								RFU
NOTE:—This value is reserved by ISO/IEC 7816-9 [17].								

Response data:

Byte(s)	Description	Length
0—Le	Record number(s).	Le
NOTE:—If Le is empty no record numbers will be returned.		

11.1.8—INCREASE

11.1.8.1—Functional description

This function adds the value given by the Terminal to the value of the last increased/updated record of the current cyclic EF, and stores the result into the oldest record. The record pointer is set to this record and this record becomes record number 1. This function can only be used if this EF has an INCREASE access condition assigned and this condition is fulfilled. The INCREASE access condition is indicated in the access rules using AM_DO tag '84'. Tag '84' indicates that the INS code for the INCREASE command is indicated as the value in the TLV object (instruction code '32'). The INCREASE command can only be used on files that refer to an access rule where this INS code is indicated as part of the rule.

The function does not perform the increase if the result would exceed the maximum value of the record (represented by all bytes set to 'FF').

Input:

—value to be added.

Output:

—value of the increased record;

—value which has been added.

11.1.8.2 Command parameters and data

Code	Value
CLA	As specified in 10.1.1.
INS	As specified in 10.1.2.
P1	See table 11.14.
P2	'00'.
Lc	Length of the subsequent data field.
Data	Value to be added.
Le	Length of the response data.

Table 11.14: Coding of P1

b8	b7	b6	b5	b4	b3	b2	b1	Meaning
0	0	0	0	0	0	0	0	Increase the currently selected EF.
1	0	0	X	X	X	X	X	SFI referencing used, b1-b5 are the SFI.
NOTE: —All other values are RFU.								

Response data:

Byte(s)	Description	Length
1—X	Value of the increased record.	X
X+1—X+Lc	Value which has been added.	Lc
NOTE: —X denotes the length of the record.		

11.1.9 VERIFY PIN

11.1.9.1 Functional description

The Verify PIN command initiates the comparison in the UICC of the PIN verification data sent from the Terminal with the PIN reference data stored in the card. The verification process is subject to the following conditions being fulfilled:

—PIN is not disabled;

—PIN is not blocked.

If the access condition for a function to be performed on the last selected file is PIN, then a successful verification of the relevant PIN is required prior to the use of the function on this file unless the PIN is disabled.

If the PIN presented is correct, the number of remaining PIN attempts for that PIN shall be reset to its initial value 3.

If the PIN presented is false, the number of remaining PIN attempts for that PIN shall be decremented. After 3 consecutive false PIN presentations, not necessarily in the same card session, the respective PIN shall be blocked and the access condition can never be fulfilled until the UNBLOCK PIN function has been successfully performed on the respective PIN.

Input:

—indication PIN or empty.

Output:

—none.

11.1.9.2 ~~Retry counter Value~~

The value of the retry counter specifies how many verification attempts are left. It can be obtained in the following ways.

- ~~— The VERIFY command is sent to the UICC with parameter P2 indicating PIN for which the retry counter value is to be retrieved with an empty data field (response SW1, SW2 '63CX' where X indicates the number of further allowed retries).~~
- ~~— In case of an unsuccessful PIN verification the UICC returns the remaining retry value in the response parameters SW1, SW2 (response '63CX' where X indicates the number of further allowed retries).~~

11.1.9.3 ~~Command parameters:~~

Code	Value
CLA	As specified in 10.1.1.
INS	As specified in 10.1.2.
P1	'00'.
P2	Qualifier of the reference data, see table 11.15.
Le	Length of the subsequent data field = '00' or '08'.
Data	PIN value.
Le	Not present.

Table 11.15: Coding of P2

b8	b7	b6	b5	b4	b3	b2	b1	Meaning
0	0	0	0	0	0	0	0	Not supported.
0	-	-	-	-	-	-	-	Global reference data (e.g. MF specific PIN).
1	-	-	-	-	-	-	-	Specific reference data (e.g. DF specific/application dependent PIN).
-	X	X	-	-	-	-	-	'00' (other values are RFU).
-	-	-	X	X	X	X	X	Reference data number ('01' to '1F').

The five least significant bits of parameter P2 specify the PIN key reference number(see subclause 9.5.1).

Command data:

Byte(s)	Description	Length
1–8	PIN value	8

11.1.10 ~~CHANGE PIN~~

11.1.10.1 ~~Functional description~~

The Change PIN command is used to initiate the comparison of the verification data with the PIN, and then to conditionally replace the existing PIN with the new PIN sent to the UICC in the command.

This function assigns a new value to the relevant PIN subject to the following conditions being fulfilled:

- ~~— PIN is not disabled;~~
- ~~— PIN is not blocked.~~

The old and new PIN shall be presented.

If the old PIN presented is correct, the number of remaining PIN attempts for that PIN shall be reset to its initial value 3 and the new value for the PIN becomes valid.

If the old PIN presented is false, the number of remaining PIN attempts for that PIN shall be decremented and the value of the PIN is unchanged. After 3 consecutive false PIN presentations, not necessarily in the same card session, the respective PIN shall be blocked and the access condition can never be fulfilled until the UNBLOCK PIN function has been performed successfully on the respective PIN.

Input:

— indication of PIN, old PIN, new PIN.

Output:

— none.

11.1.10.2 — Command parameters

Code	Value
CLA	As specified in 10.1.1.
INS	As specified in 10.1.2.
P1	'00'.
P2	As specified for the VERIFY PIN command, see 11.1.9.
Le	Length of the subsequent data field = '10'.
Data	Old PIN value, new PIN value.
Le	Not present.

NOTE: — "Change PIN" is named "exchange reference data" in ISO/IEC 7816-8 [16].

Byte(s)	Description	Length
1—8	Old PIN value	8
9—16	New PIN value	8

11.1.11 — DISABLE PIN

11.1.11.1 — Functional description

The Disable PIN command is used to switch off the requirement to compare the PIN verification data with the PIN reference data. The command also allows an indication whether to use an alternative global key reference, if enabled, or not when the application PIN is disabled. For universal PIN definition see subclause 9.2.1. Usage of an alternative global key reference for user verification is indicated in parameter P1. If an alternative global key reference is used as a replacement for the application PIN the verification of the alternative global key reference shall be performed instead of the application PIN verification to get access to the application.

NOTE: — The access rules for the application must cater for the case that an alternative global key reference replaces the application PIN. It is the responsibility of the application to specify this.

The successful execution of this function has the effect that files protected by PIN are now accessible as if they were marked "ALWAYS", except in the case where the alternative global key reference is to be used as a replacement for the disabled PIN. In this case the access condition for files containing only a reference to the disabled PIN is the alternative global key reference. For files having more than one global key reference indicated in the access rules the access condition is "ALWAYS" after disabling on of the key references used in the access rules. The function DISABLE PIN shall not be executed by the selected application when PIN is already disabled or blocked.

NOTE: — Every application must specify whether this function is applicable to all PINs defined for the application.

If the PIN presented is correct, the number of remaining PIN attempts shall be reset to its initial value 3 and PIN shall be disabled.

If the PIN presented is false, the number of remaining PIN attempts shall be decremented and PIN remains enabled. After 3 consecutive false PIN presentations, not necessarily in the same card session, the PIN shall be blocked and the access condition can never be fulfilled until the UNBLOCK PIN function has been successfully performed on PIN.

Input:

~~—PIN:~~~~Output:~~~~-none-~~

11.1.11.2 ~~—Command parameters~~

Code	Value
CLA	As specified in 10.1.1.
INS	As specified in 10.1.2.
P1	See table 11.16.
P2	As specified for the VERIFY PIN command, see 11.1.9.
Le	Length of the subsequent data = '08'.
Data	PIN value.
Le	Not present.

Table 11.16: Coding of P1

b8	b7	b6	b5	b4	b3	b2	b1	Meaning
0	0	0	0	0	0	0	0	Verification data present in data field
0	0	0	0	0	0	0	1	Reserved by ISO/IEC 7816-8 [16]
1	-	-	-	-	-	-	-	Verification data present, and use reference data number as verification replacement
-	X	X	-	-	-	-	-	'00' (other values are RFU)
-	-	-	X	X	X	X	X	Global key reference data number ('01' to '1F')

~~Command data:~~

Byte(s)	Description	Length
1–8	PIN value	8

11.1.12 ~~ENABLE PIN~~

11.1.12.1 ~~Functional description~~

The Enable PIN command is used to switch on the requirement to compare the PIN verification data with the PIN reference data. It is the reverse function of DISABLE PIN. If an alternative global key reference has been used as a replacement for the application PIN. The usage of the alternative global key reference as a replacement shall be disabled upon enabling the PIN for which the alternative global key reference has been a replacement (setting the usage qualifier in the PS_DO template data object for the alternative global key reference to don't use = '00').

The function ENABLE PIN shall not be executed by the selected application when PIN is already enabled or blocked.

Every application shall specify whether this function is applicable to all PINs defined for the application.

If the PIN presented is correct, the number of remaining PIN attempts shall be reset to its initial value 3 and PIN shall be enabled.

If the PIN presented is false, the number of remaining PIN attempts shall be decremented and PIN remains disabled. After 3 consecutive false PIN presentations, not necessarily in the same card session, PIN shall be blocked and may optionally be set to "enabled". Once blocked, the PIN can only be unblocked using the UNBLOCK PIN function. If the PIN is blocked and "disabled", the access condition shall remain granted. If the PIN is blocked and "enabled", the access condition can never be fulfilled until the UNBLOCK PIN function has been successfully performed on PIN.

~~Input:~~~~—PIN:~~

Output:

— none.

11.1.12.2 Command parameters

Code	Value
CLA	As specified in 10.1.1.
INS	As specified in 10.1.2.
P1	'00'.
P2	As specified for the VERIFY PIN command, see 11.1.9.
Lc	Length of the subsequent data = '08'.
Data	PIN value.
Le	Not present.

Command data:

Byte(s)	Description	Length
1–8	PIN value	8

11.1.13 UNBLOCK PIN

11.1.13.1 Functional description

The Unblock PIN command is used to reset the PIN retry counter to its initial value and then to conditionally set a new PIN value. This function may be performed whether or not the relevant PIN is blocked (e.g. by 3 consecutive wrong PIN presentations).

If the UNBLOCK PIN presented is correct, the value of the PIN, presented together with the UNBLOCK PIN, is assigned to that PIN, the number of remaining UNBLOCK PIN attempts for that UNBLOCK PIN is reset to its initial value 10 and the number of remaining PIN attempts for that PIN is reset to its initial value 3. After a successful unblocking attempt the PIN is enabled and the relevant access condition level is satisfied.

If the presented UNBLOCK PIN is false, the number of remaining UNBLOCK PIN attempts for that UNBLOCK PIN shall be decremented. After 10 consecutive false UNBLOCK PIN presentations, not necessarily in the same card session, the respective UNBLOCK PIN shall be blocked. A false UNBLOCK PIN shall have no effect on the status of the respective PIN itself.

Input:

— indication PIN, the UNBLOCK PIN and the new PIN or empty.

Output:

— none.

11.1.13.2 Retry counter Value

The value of the retry counter, is obtained in the following ways:

- the UNBLOCK PIN command is sent to the UICC with parameter P2 indicating UNBLOCK PIN for which the retry counter value is to be retrieved with an empty data field (response SW1, SW2 '63CX', where X indicates the number of further allowed retries);
- in case of an unsuccessful PIN verification the UICC returns the remaining retry value in the response parameters SW1, SW2 (response '63CX', where X indicates the number of further allowed retries).

11.1.13.3 ~~Command parameters~~

Code	Value
CLA	As specified in 10.1.1.
INS	As specified in 10.1.2.
P1	'00'
P2	As specified for the VERIFY PIN command (see 11.1.9)
Le	Length of the subsequent data field = '00' or '10'
Data	UNBLOCK PIN value, new PIN value
Le	Not present

Command data:

Byte(s)	Description	Length
1–8	UNBLOCK PIN value	8
9–16	New PIN value	8

11.1.14 ~~DEACTIVATE FILE~~

11.1.14.1 ~~Functional description~~

This function initiates a reversible deactivation of an EF. After a DEACTIVATE FILE function the respective flag in the file status shall be changed accordingly. This function shall only be performed if the DEACTIVATE FILE access condition for the EF is satisfied.

An deactivated file shall no longer be available within the selected application for any function except for the SELECT and the ACTIVATE FILE functions.

Input:

~~—none.~~

Output:

~~—none.~~

11.1.14.2 ~~Command parameters~~

Code	Value
CLA	As specified in 10.1.1.
INS	As specified in 10.1.2.
P1	As specified for the SELECT command (see 11.1.1).
P2	00.
Le	Length of subsequent data field or empty.
Data	File ID or path to file, according to P1.
Le	Not present.

11.1.15 ~~ACTIVATE FILE~~

11.1.15.1 ~~Functional description~~

This function reactivates a deactivated EF. After an ACTIVATE FILE function the respective flag in the file status shall be changed accordingly. This function shall only be performed if the ACTIVATE FILE access condition for the EF is satisfied.

Input:

~~—none.~~

Output:

~~—none.~~

11.1.15.2 Command parameters

Code	Value
CLA	As specified in 10.1.1.
INS	As specified in 10.1.2.
P1	As specified for the SELECT command (see 11.1.1).
P2	00.
Le	Length of subsequent data field or empty.
Data	File ID or path to file, according to P1.
Le	Not present.

11.1.16 AUTHENTICATE

11.1.16.1 Functional description

An appropriate application shall be selected in the UICC before issuing this command. The function initiates the computation of authentication data by the UICC using a challenge sent from the terminal and a secret stored in the UICC.

Input:

—challenge data.

Output:

—authentication and ciphering data.

11.1.16.2 Command parameters and data

Code	Value
CLA	As specified in 10.1.1.
INS	As specified in 10.1.2.
P1	'00'.
P2	See table 11.17.
Le	Length of the subsequent data field.
Data	Authentication related data.
Le	Length of the response data.

NOTE 1: Parameter P1='00' indicates that no information on the algorithm is given. The algorithm is implicitly known in the context of the selected application.

Table 11.17: Coding of P2

b8	b7	b6	b5	b4	b3	b2	B1	Meaning
0	0	0	0	0	0	0	0	No information given
0	-	-	-	-	-	-	-	Global reference data (e.g. MF specific KEY)
1	-	-	-	-	-	-	-	Specific reference data (e.g. DF specific/application dependent KEY)
-	X	X	-	-	-	-	-	'00' (other values are RFU)
-	-	-	X	X	X	X	X	Reference data number ('01' to '1F')

NOTE 2: Parameter P2='00' indicates that no information on the key is given. The key is implicitly known in the context of the selected application.

Command data:

Byte(s)	Description	Length
1—Le	Authentication-related data (see NOTE).	Le
NOTE: The command data must be specified by each application specific document.		

Response data (generic):

Byte(s)	Description	Length
1—Le	Authentication-related data (see NOTE).	Le
NOTE: The response data must be specified by each application specific document.		

~~11.1.17 MANAGE CHANNEL~~

The MANAGE CHANNEL command is for further study by 3GPP TSG T-WG3.

~~11.2 USAT Commands~~

~~11.2.1 TERMINAL PROFILE~~

~~11.2.1.1 Functional description~~

This function is used by the Terminal to transmit its USAT capabilities to the applications present on the UICC.

Input:

—terminal profile.

Output:

—none.

~~11.2.1.2 Command parameters and data~~

Code	Value
CLA	As specified in 10.1.1.
INS	As specified in 10.1.2.
P1	'00'.
P2	'00'.
Le	Length of the subsequent data field.
Data	Structure and coding defined in 3G-TS 31.111 [4].
Le	Not present.

~~11.2.2 ENVELOPE~~

~~11.2.2.1 Functional description~~

This function is used to transfer USAT information from the UE to the UICC.

Input:

—The structure of the data is defined in 3G-TS 31.111 [4].

Output:

—the structure of the data is defined in 3G-TS 31.111 [4].

11.2.2.2 Command parameters and data

Code	Value
CLA	As specified in 10.1.1.
INS	As specified in 10.1.2.
P1	'00'.
P2	'00'.
Le	Length of the subsequent data field.
Data	Structure and coding defined in 3G TS 31.111 [4].
Le	Empty or maximum length of response data.

Response data:

Structure of the response data is defined in 3G TS 31.111 [4] for USAT applications.

11.2.3 FETCH

11.2.3.1 Functional description

This function is used to transfer a proactive command from the UICC to the Terminal (e.g. from a USAT application).

Input:

— none.

Output:

— data string containing a proactive command for the Terminal (e.g. a USAT command).

11.2.3.2 Command parameters and data

Code	Value
CLA	As specified in 10.1.1.
INS	As specified in 10.1.2.
P1	'00'.
P2	'00'.
Le	Not present.
Data	Not present.
Le	Length of expected data.

Response data:

Structure of the response data is defined in 3G TS 31.111 [4] for USAT applications.

11.2.4 TERMINAL RESPONSE

11.2.4.1 Functional description

This function is used to transfer from the Terminal to the UICC the response to a previously fetched proactive command (e.g. a USAT command).

Input:

— data string containing the response.

Output:

— none.

11.2.4.2 Command parameters and data

Code	Value
CLA	As specified in 10.1.1.
INS	As specified in 10.1.2.
P1	'00'
P2	'00'
Le	Length of the subsequent data field.
Data	Structure and coding defined in 3G TS 31.111 [4].
Le	Not present.

12 Transmission Oriented Commands

This clause lists all transport specific commands. Currently there is only one such command.

12.1 T=0 specific commands

12.1.1 GET RESPONSE

12.1.1.1 Functional description

The command is used to transmit APDUs from the card to the Terminal, which otherwise could not be transferred by the protocol.

The response data depends on the preceding command. Response data is available after the commands AUTHENTICATE, SEARCH RECORD, SELECT and INCREASE. If the command GET RESPONSE is executed, it is required that it is executed immediately after the command it is related to (no other command shall come between the command/response pair and the command GET RESPONSE). If the sequence is not respected, the selected application shall send the status information "technical problem, no precise diagnosis" as a reaction to the GET RESPONSE.

Since the MF is implicitly selected after activation, GET RESPONSE is also allowed as the first command after activation.

The response data itself is defined in the sub-clause for the corresponding command.

12.1.1.2 Command parameters

Table 12.1: Parameters for GET RESPONSE

Code	Value
CLA	As specified in 10.1.1.
INS	As specified in 10.1.2.
P1	'00'
P2	'00'
Le	Not present
Data	Not present
Le	'00' or value of SW2 of the previous command

Response parameters and data:

The response data is defined in each subclause of the corresponding command.

13 Application independent files

13.1 EF_{DIR}

EF_{DIR} is a linear fixed file. This file is under the responsibility of the issuer when at the MF level. It can be under a different responsibility, when situated at a lower level.

Table 13.1: EF_{DIR} at MF level

Identifier: '2F00'		Structure: Linear fixed		Mandatory	
SFI: Mandatory					
Record size: X bytes			Update activity: low		
Access Conditions:					
— READ ————— ALW					
— UPDATE ————— ADM					
— DEACTIVATE ————— ADM					
— ACTIVATE ————— ADM					
Bytes	Description			M/O	Length
1—X	Application template TLV object			M	X bytes

The EF consists of one or more records, with each record able to hold one entry. Each entry in the EF_{DIR} is an application template Data Object (DO) as defined in ISO/IEC 7816-5 [14]. An application template DO is a constructed BER-TLV object with a maximum length of 127 bytes and has a mandatory AID-DO. Within the scope of this specification, all other DOs are optional.

In table 13.2 the coding of the mandatory DOs and the optional DOs that has special meaning to this document. All other DOs are according to ISO/IEC 7816-5 [14].

Table 13.2: Coding of an application template entry

Length	Description	Status
1	Application template tag = '61'.	M
1	Length of the application template = '03' '7F'.	M
1	Application Identifier tag = '4F'.	M
1	AID length = '01'-'10'.	M
'01'-'10'	AID value. For 3G applications, see 3G-TS 31.110 [3].	M
1	Application label tag = '50'.	O
1	Application label length.	O
NOTE 1	Application label value.	O
NOTE 1: The application label is a DO that contains a string of bytes provided by the application provider to be shown to the user for information, e.g. operator name. The value part of the application label shall be coded according to Annex A. In ISO/IEC 7816-5 [14] the application label is limited to 16 bytes, this does not apply to this specification it is however recommended that the number of bytes does not exceed 32. NOTE 2: Other DOs from ISO/IEC 7816-5 [14] may, at the application issuer's discretion, be present as well.		

13.2 EF_{ICCID} (ICC Identification)

This EF provides a unique identification number for the UICC.

Table 13.3: EF_{ICCID} at MF-level

Identifier: '2FE2'		Structure: transparent		Mandatory
File size: 10 bytes			Update activity: low	
Access Conditions:				
— READ		ALW		
— UPDATE		NEV		
— DEACTIVATE		ADM		
— ACTIVATE		ADM		
Bytes	Description		M/O	Length
1—10	Identification number		M	10 bytes

Identification number:

Contents:

according to CCITT Recommendation E.118 [5].

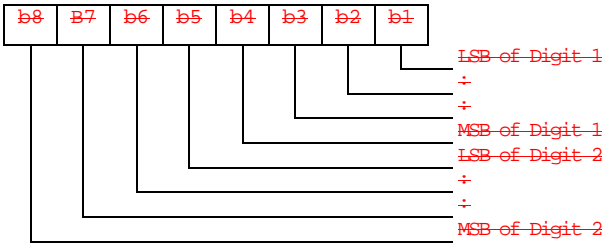
Purpose:

card identification number.

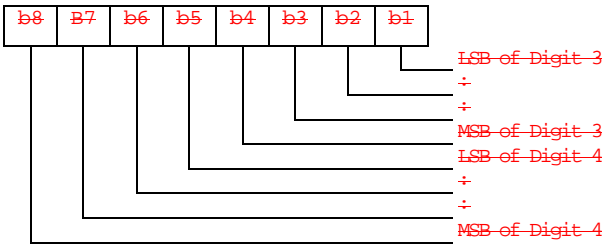
Coding:

BCD, left justified and padded with 'F.' The order of digits is coded as below:

Byte 1:



Byte 2:



etc.

13.3 EF_{PL} (Preferred Languages)

This EF contains the codes for up to n languages. This information, determined by the user/operator, defines the preferred languages of the user, for the UICC, in order of priority.

Table 13.4: EF_{PL} at MF-level

Identifier: '2F 05'		Structure: transparent		Mandatory
SFI: Mandatory				
File size: 2n bytes			Update activity: low	
Access Conditions:				
— READ		ALW		
— UPDATE		PIN		
— DEACTIVATE		ADM		
— ACTIVATE		ADM		
Bytes	Description		M/O	Length
1—2	1 st language code (highest prior)		M	2 bytes
3—4	2 nd language code		O	2 bytes
2n-1—2n	nth language code (lowest prior)		O	2 bytes

Coding:

- each language code is a pair of alpha numeric characters, defined in ISO-639 [6]. Each alpha numeric character shall be coded on one byte using the SMS default 7 bit coded alphabet as defined in 3G TS 23.038 [1] with bit 8 set to 0.

Unused language entries shall be set to 'FF FF'.

13.4 EF_{ARR} (Access Rule Reference)

This EF contains the access rules for files located under the MF in the UICC. If the security attribute tag '8B' is indicated in the FCP it contains a reference to a record in this file.

Table 13.4: EF_{ARR} at MF-level

Identifier: '2F06'		Structure: Linear fixed		Optional
File size: X bytes			Update activity: low	
Access Conditions:				
— READ		ALW		
— UPDATE		ADM		
— DEACTIVATE		ADM		
— ACTIVATE		ADM		
Bytes	Description		M/O	Length
1—X	Access Rule TLV data objects		M	X bytes

This EF contains one or more records containing access rule information according to the referenced format as defined in ISO/IEC 7816-9 [17]. Each record represents an access rule. Unused bytes in the record are set to 'FF'.

14 Application independent protocol

14.1 File related procedures

14.1.1 Reading an EF

Reading of an EF can be done in two different ways.

If the short file identifiers are used the following procedure applies:

- if short file identifiers are used, EFs that support SFI within the Current Directory can be read without explicitly selecting the EF. The Terminal selects the DF or ADF and sends a READ command. This contains the short file identifier of the EF to be read and the location of the data to be read. If the access condition for READ is fulfilled, the application sends the requested data contained in the EF to the Terminal. If the access condition is not fulfilled, no data will be sent and an error code will be returned.

If the short file identifiers are not used the following procedure applies:

- the Terminal selects the EF and sends a READ command. This contains the location of the data to be read. If the access condition for READ is fulfilled, the application sends the requested data contained in the EF to the Terminal. If the access condition is not fulfilled, no data will be sent and an error code will be returned.

14.1.2 Updating an EF

Updating of an EF can be done in two different ways:

If the short file identifiers are used the following procedure applies:

- if short file identifiers are used, EFs that support SFI within the Current Directory can be updated without explicitly selecting the EF. The Terminal selects the DF or ADF and sends an UPDATE command. This contains the short file identifier of the EF and the location of the data to be updated and the new data to be stored. If the access condition for UPDATE is fulfilled, the application updates the selected EF by replacing the existing data in the EF with that contained in the command. If the access condition is not fulfilled, the data existing in the EF will be unchanged, the new data will not be stored, and an error code will be returned.

If the short file identifiers are not used the following procedure applies:

- the Terminal selects the EF and sends an UPDATE command. This contains the location of the data to be updated and the new data to be stored. If the access condition for UPDATE is fulfilled, the application updates the selected EF by replacing the existing data in the EF with that contained in the command. If the access condition is not fulfilled, the data existing in the EF will be unchanged, the new data will not be stored, and an error code will be returned.

14.1.3 Increasing an EF

Increasing of an EF can be done in two different ways:

If the short file identifiers are used the following procedure applies:

- If short file identifiers are used, EFs that support SFI within the Current Directory can be increased without explicitly selecting the EF. The Terminal selects the DF or ADF and sends an INCREASE command. This contains the short file identifier of the EF and the value which has to be added to the contents of the last updated/increased record. If the access condition for INCREASE is fulfilled, the application increases the existing value of the EF by the data contained in the command, and stores the result. If the access condition is not fulfilled, the data existing in the EF will be unchanged and an error code will be returned.

If the short file identifiers are not used the following procedure applies:

- The Terminal selects the EF and sends an INCREASE command. This contains the value which has to be added to the contents of the last updated/increased record. If the access condition for INCREASE is fulfilled, the application increases the existing value of the EF by the data contained in the command, and stores the result. If the access condition is not fulfilled, the data existing in the EF will be unchanged and an error code will be returned.

NOTE:— The identification of the data within an EF to be acted upon by the above procedures is specified within the command. For the procedures in subclauses 14.1.1 and 14.1.2 this data may have been previously identified using a SEARCH RECORD command, e.g. searching for an alphanumeric pattern.

~~14.2 PIN related procedures~~

~~NOTE: This document specifies only the generic behaviour of a PIN. An application may create a set of PINs each with a specific behaviour.~~

~~A successful completion of one of the following procedures grants the access right of the corresponding PIN for an application session. This right is valid for all files within the application protected by this PIN.~~

~~After a third consecutive presentation of a wrong PIN to an application, not necessarily in the same application session, the PIN status becomes "blocked" and if the PIN is "enabled", the access right previously granted by this PIN is lost immediately.~~

~~An access right is not granted if any of the following procedures are unsuccessfully completed or aborted.~~

~~14.2.1 PIN verification~~

~~The Terminal checks the PIN status and the following procedure applies:~~

- ~~— If the PIN status is "blocked" and PIN is "enabled", the procedure ends and is finished unsuccessfully.~~
- ~~— If the PIN status is "blocked" but PIN is "disabled", the procedure ends and is finished successfully. The Terminal shall, however, accept applications which do not grant access rights when PIN is "blocked" and "disabled". In that case Terminal shall consider those applications as "blocked".~~
- ~~— If the PIN status is not "blocked" and PIN is "disabled", the procedure is finished successfully.~~
- ~~— If the PIN status is not "blocked" and PIN is "enabled", the Terminal uses the VERIFY PIN function. If the PIN presented by the Terminal is equal to the corresponding PIN stored in the application, the procedure is finished successfully. If the PIN presented by the Terminal is not equal to the PIN which protects the application, the procedure ends and is finished unsuccessfully.~~

~~14.2.2 PIN value substitution~~

~~The Terminal checks the PIN status. If the PIN status is "blocked" or "disabled", the procedure ends and is finished unsuccessfully.~~

~~If the PIN status is not "blocked" and the enabled/disabled indicator is set "enabled", the Terminal uses the CHANGE PIN function. If the old PIN presented by the Terminal is equal to the PIN which protects the application, the new PIN presented by the Terminal is stored instead of the old one and the procedure is finished successfully.~~

~~If the old PIN and the PIN in memory are not identical, the procedure ends and is finished unsuccessfully.~~

~~14.2.3 PIN disabling~~

~~PIN enabling and disabling may be disallowed by an application. If it is allowed then the following procedures shall be followed:~~

- ~~— The Terminal checks the PIN status. If the PIN status is "blocked", the procedure ends and is finished unsuccessfully.~~
- ~~— If the PIN status is not "blocked", the Terminal reads the PIN enabled/disabled indicator. If this is set "disabled", the procedure ends and is finished unsuccessfully.~~
- ~~— If the PIN status is not "blocked" and the enabled/disabled indicator is set "enabled", the Terminal uses the DISABLE PIN function. If the PIN presented by the Terminal is equal to the PIN which protects the application, the status of PIN is set "disabled" and the procedure is finished successfully. If the PIN presented by the Terminal is not equal to the PIN which protects the application, the procedure ends and is finished unsuccessfully.~~

~~14.2.4 PIN enabling~~

~~PIN enabling and disabling may be disallowed by an application. If it is allowed then the following procedures shall be followed: The Terminal checks the PIN status. If the PIN status is "blocked", the procedure ends and is finished unsuccessfully.~~

- ~~— If the PIN status is not "blocked", the Terminal reads the PIN enabled/disabled indicator. If this is set "enabled", the procedure ends and is finished unsuccessfully.~~
- ~~— If the PIN status is not "blocked" and the enabled/disabled indicator is set "disabled", the Terminal uses the ENABLE PIN function. If the PIN presented by the Terminal is equal to the PIN which protects the application, the status of PIN is set "enabled" and the procedure is finished successfully. If the PIN presented by the Terminal is not equal to the PIN which protects the application, the procedure ends and is finished unsuccessfully.~~

~~14.2.5 PIN unblocking~~

~~The execution of the PIN unblocking procedure is independent of the corresponding PIN status, i.e. being blocked or not.~~

~~The Terminal checks the UNBLOCK PIN status. If the UNBLOCK PIN status is "blocked", the procedure ends and is finished unsuccessfully.~~

~~If the UNBLOCK PIN status is not "blocked", the Terminal uses the UNBLOCK PIN function. If the UNBLOCK PIN presented by the Terminal is equal to the corresponding UNBLOCK PIN of the application, the relevant PIN status becomes "unblocked" and the procedure is finished successfully. If the UNBLOCK PIN presented by the Terminal is not equal to the corresponding UNBLOCK PIN of the application, the procedure ends and is finished unsuccessfully.~~

~~14.3 Application selection procedures~~

~~14.3.1 Application selection by use of the EF_{DIR} file~~

~~Application selection by use of the EF_{DIR} file is the procedure where the Terminal reads the content of the EF_{DIR} file and presents the list of applications to the user whom can then make select one or more applications to activate.~~

~~The Terminal performs the read procedure with EF_{DIR} and presents the applications that it supports to the user who may make a selection. If only one supported application is found this may be implicitly selected.~~

~~14.3.2 Direct application selection~~

~~An application may be selected, without reading the content of the EF_{DIR} file, by performing the SELECT procedure with the AID of the application to be selected.~~

~~14.3.3 Direct application selection with partial AID~~

~~This is ffs.~~

~~14.4 General application related procedures~~

~~14.4.1 Application session activation~~

~~The Terminal performs the SELECT function with the AID of the selected application as a parameter.~~

If the SELECT function ends successfully the selected application's initialisation procedure is executed. If the initialisation procedure ends successfully the UICC enters the operation state. If the initialisation procedure does not end successfully, the UICC remains in the application management state and sends an indication to the user that it was not possible to activate the selected application.

~~14.4.2 UICC Application interrogation~~

~~The list of applications residing in the UICC can be read at anytime when the UICC is not inactive.~~

~~Request: The Terminal performs the read procedure with EF_{DIR}.~~

~~14.4.3 UICC application session termination~~

~~An application session can be terminated at any time when the UICC is not inactive.~~

~~14.5 Miscellaneous procedures~~

~~14.5.1 UICC activation~~

~~After activation of the UICC, as defined in subclause 4.5, the Terminal requests the Preferred Language (EF_{PL}). If the terminal supports USAT, it shall perform the USAT initialization procedure. The Terminal then performs an application selection procedure according to subclause 14.3.~~

~~14.5.2 UICC presence detection~~

~~To ensure that the UICC has not been removed during a card session, the Terminal sends, at frequent intervals, a STATUS command during each call. A STATUS command shall be issued within all 30 second periods of inactivity on the UICC Terminal interface during a call. Inactivity in this case is defined as starting at the end of the last communication or the last issued STATUS command. If no response data is received to this STATUS command, then the call shall be terminated as soon as possible but at least within 5 seconds after the STATUS command has been sent. If the DF indicated in response to a STATUS command is not the same as that which was indicated in the previous response, or accessed by the previous command, then the call shall be terminated as soon as possible but at least within 5 seconds after the response data has been received. This procedure shall be used in addition to a mechanical or other device used to detect the removal of a UICC.~~

~~14.5.3 UICC Preferred Language request~~

~~Request: The Terminal performs the read procedure with EF_{PL}.~~

~~Update: The Terminal performs the update procedure with EF_{PL}.~~

~~14.6 USAT related procedures~~

~~The higher level procedures, and contents and coding of the commands, are given in TS 31.111 [4]. Procedures relating to the transmission of commands and responses across the Terminal UICC interface are given in this section. A UICC or Terminal supporting USAT shall conform to the requirements given in this section.~~

~~14.6.1 USAT Initialization procedure~~

~~A UICC shall support the USAT initialization procedure. A Terminal supporting USAT shall send the TERMINAL PROFILE C APDU. The Terminal shall then start the proactive polling procedure with the default value.~~

~~14.6.2 Proactive polling~~

~~During idle mode the Terminal shall send STATUS commands to the UICC at intervals no longer than the interval negotiated with the UICC (see TS 31.111 [4]). During a call the UICC presence detection applies. The default value for the proactive polling is the same as for the presence detection procedure.~~

~~14.6.3 Support of commands~~

~~A Terminal supporting USAT shall support the commands TERMINAL PROFILE, ENVELOPE, FETCH and TERMINAL RESPONSE.~~

~~14.6.4 Support of response codes~~

~~A Terminal supporting USAT shall support the response status words (SW1-SW2) '91-XX' and '93-00'.~~

~~These responses shall never be used if the Terminal does not support USAT.~~

~~14.6.5 Independence of applications and USAT tasks~~

~~Application and USAT operation shall be logically independent, both in the UICC and in the Terminal. Specifically, this means:~~

- ~~— The currently selected EF and current record pointer in any active application shall remain unchanged, if still valid, as seen by the Terminal, irrespective of any USAT activity.~~
- ~~— Between successive USAT related command response pairs, other application (e.g. USIM) and UICC related command response pairs can occur. The USAT task status shall remain unchanged by these command response pairs.~~

~~14.6.6 Use of BUSY status response~~

~~If for any reason the USAT task of the UICC cannot process an ENVELOPE command issued by the Terminal at present (e.g. other USAT processes are already running), the UICC can respond with a status response of '93-00'. The Terminal may re-issue the command at a later stage.~~

~~The BUSY status response has no impact on USIM operation.~~

~~14.6.7 Additional processing time~~

~~The Transport Protocol provides a mechanism for the UICC to obtain additional processing time (i.e. NULL procedure byte for T=0 and Work Waiting time extension (WTX) for T=1) before supplying the response part of a command response pair, during which time the Terminal is unable to send further commands to the UICC.~~

~~If a USAT activity in the UICC runs for too long, this may prevent the Terminal from sending USIM commands which are time critical, e.g. INTERNAL AUTHENTICATE. A MORE TIME command is defined in TS 31.111 [4], which ensures that the USAT task in the UICC gets additional processing time, while at the same time freeing the UICC/Terminal interface. The MORE TIME command should be used in preference to the Transport Protocol specific mechanisms for obtaining additional processing time.~~

Annex A (normative):

UCS2 Coding of Alpha fields for files residing on the UICC

If 16 bit UCS2 characters as defined in ISO/IEC 10646 [18] are used in an alpha field, the coding can take one of three forms. If the Terminal supports UCS2 coding of alpha fields in the UICC, the Terminal shall support all three coding schemes for character sets containing 128 characters or less; for character sets containing more than 128 characters, the Terminal shall at least support the first coding scheme. If the alpha field record contains GSM default alphabet characters only, then none of these schemes shall be used in that record. Within a record, only one coding scheme, either the GSM default alphabet (see 3G TS 23.038 [1]), or one of the three described below, shall be used.

- 1) If the first byte in the alpha string is '80', then the remaining bytes are 16 bit UCS2 characters, with the more significant byte (MSB) of the UCS2 character coded in the lower numbered byte of the alpha field, and the less significant byte (LSB) of the UCS2 character is coded in the higher numbered alpha field byte, i.e. byte 2 of the alpha field contains the more significant byte (MSB) of the first UCS2 character, and byte 3 of the alpha field contains the less significant byte (LSB) of the first UCS2 character (as shown below). Unused bytes shall be set to 'FF', and if the alpha field is an even number of bytes in length, then the last (unusable) byte shall be set to 'FF'.

Example 1

Byte 1	Byte 2	Byte 3	Byte 4	Byte 5	Byte 6	Byte 7	Byte 8	Byte 9
'80'	Ch1 _{MSB}	Ch1 _{LSB}	Ch2 _{MSB}	Ch2 _{LSB}	Ch3 _{MSB}	Ch3 _{LSB}	'FF'	'FF'

- 2) If the first byte of the alpha string is set to '81', then the second byte contains a value indicating the number of characters in the string, and the third byte contains an 8 bit number which defines bits 15 to 8 of a 16 bit base pointer, where bit 16 is set to zero, and bits 7 to 1 are also set to zero. These sixteen bits constitute a base pointer to a "half page" in the UCS2 code space, to be used with some or all of the remaining bytes in the string. The fourth and subsequent bytes in the string contain codings as follows; if bit 8 of the byte is set to zero, the remaining 7 bits of the byte contain a GSM Default Alphabet character, whereas if bit 8 of the byte is set to one, then the remaining seven bits are an offset value added to the 16 bit base pointer defined earlier, and the resultant 16 bit value is a UCS2 code point, and completely defines a UCS2 character.

Example 2

Byte 1	Byte 2	Byte 3	Byte 4	Byte 5	Byte 6	Byte 7	Byte 8	Byte 9
'81'	'05'	'13'	'53'	'95'	'A6'	'XX'	'FF'	'FF'

— In the above example:

- byte 2 indicates that there are 5 characters in the string;
- byte 3 indicates bits 15 to 8 of the base pointer, and indicates a bit pattern of 0hhh hhhh h000 0000 as the 16 bit base pointer number. Bengali characters for example start at code position 0980 (0000 1001 1000 0000), which is indicated by the coding '13' in byte 3 (shown by the italicised digits);
- byte 4 indicates GSM Default Alphabet character '53', i.e. "S";
- byte 5 indicates a UCS2 character offset to the base pointer of '15', expressed in binary as follows 001 0101, which, when added to the base pointer value results in a sixteen bit value of 0000 1001 1001 0101, i.e. '0995', which is the Bengali letter KA;
- byte 8 contains the value 'FF', but as the string length is 5, this a valid character in the string, where the bit pattern 111 1111 is added to the base pointer, yielding a sixteen bit value of 0000 1001 1111 1111 for the UCS2 character (i.e. '09FF').

- 3) ~~If the first byte of the alpha string is set to '82', then the second byte contains a value indicating the number of characters in the string, and the third and fourth bytes contain a 16-bit number which defines the complete 16-bit base pointer to a "half page" in the UCS2 code space, for use with some or all of the remaining bytes in the string. The fifth and subsequent bytes in the string contain codings as follows; if bit 8 of the byte is set to zero, the remaining 7 bits of the byte contain a GSM Default Alphabet character, whereas if bit 8 of the byte is set to one, the remaining seven bits are an offset value added to the base pointer defined in bytes three and four, and the resultant 16-bit value is a UCS2 code point, and defines a UCS2 character.~~

Example 3

Byte 1	Byte 2	Byte 3	Byte 4	Byte 5	Byte 6	Byte 7	Byte 8	Byte 9
'82'	'05'	'05'	'30'	'2D'	'82'	'D3'	'2D'	'34'

~~In the above example:~~

- ~~— byte 2 indicates that there are 5 characters in the string;~~
- ~~— bytes 3 and 4 contain a sixteen bit base pointer number of '0530', pointing to the first character of the Armenian character set;~~
- ~~— byte 5 contains a GSM Default Alphabet character of '2D', which is a dash " " ;~~
- ~~— byte 6 contains a value '82', which indicates it is an offset of '02' added to the base pointer, resulting in a UCS2 character code of '0532', which represents Armenian character Capital BEN;~~
- ~~— byte 7 contains a value 'D3', an offset of '53', which when added to the base pointer results in a UCS2 code point of '0583', representing Armenian Character small PIWR.~~

Annex B (informative): Main states of a UICC

A UICC complying to this standard has the following states of operation:

- "Inactive" — In this state the UICC is powered off.
- "Application management" — In this state it is possible to start/end one or more application session(s) as well as retrieve the list of applications in the UICC. This state can be entered at any time when the UICC is not in the inactive state and left when the PIN access condition for all the selected applications has been verified.
- "Operation" — This state is entered after the application session activation procedure for at least one application has ended successfully.

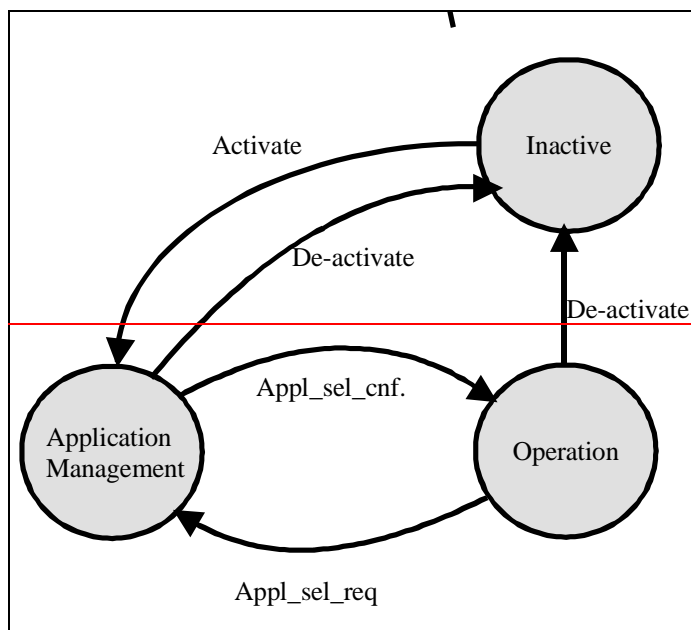


Figure B.1: UICC states

Annex C (informative):

APDU Protocol Transmission Examples

C.1 Exchanges Using T=0

The following examples illustrate exchanges of data and procedure bytes between the terminal and the UICC.

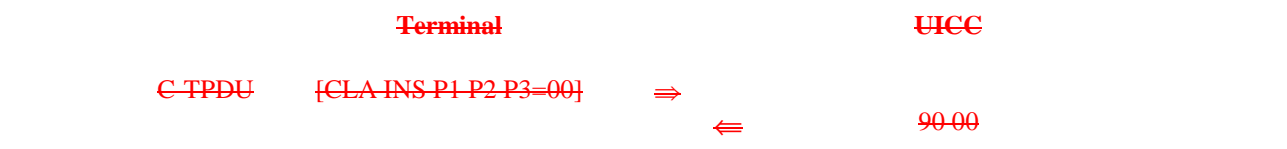
Note the following:

- The use of procedure bytes '60' and ~~INS~~ is not illustrated.
- [Data(X)] means X bytes of data.
- Case 2 and 4 commands may have Le = '00' requesting the return of all data from the UICC up to the maximum available.

The examples in clauses C.1.1.1 to C.1.1.4 illustrate typical exchanges using case 1 to 4 commands. The examples in the subclauses C.1.1.5 and C.1.1.6 illustrate the more extensive use of procedure bytes '61 XX' when used with case 2 and 4 commands. The example in subclause C.1.1.7 illustrates a warning condition with a case 4 command.

C.1.1 Case 1 Command

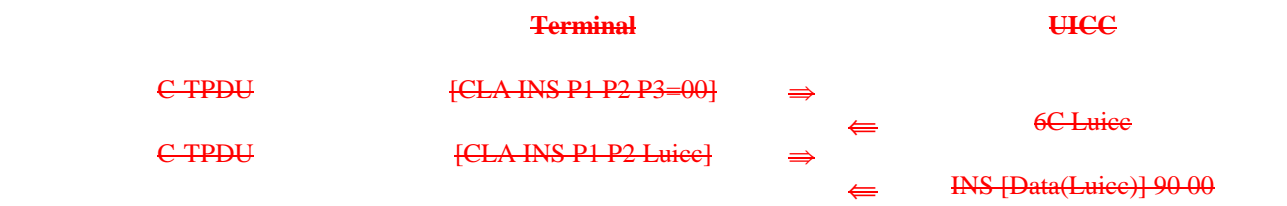
A C APDU of {CLA INS P1 P2} is passed from the Terminal to the UICC (note that P3 of the C TPDU is set to '00').



An R APDU of {90 00} is returned from the UICC to the Terminal.

C.1.2 Case 2 Command

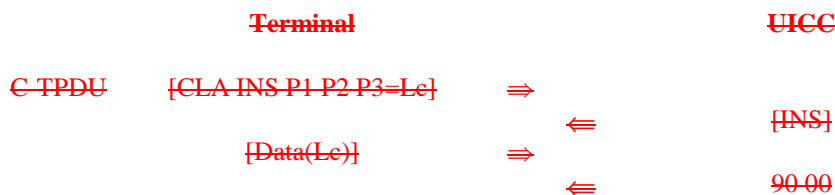
In this example, a C APDU of {CLA INS P1 P2 Le=00} is passed from the Terminal to the UICC.



An R APDU of {[Data(Luice)] 90 00} is returned from the UICC to the Terminal.

~~C.1.3 Case 3 Command~~

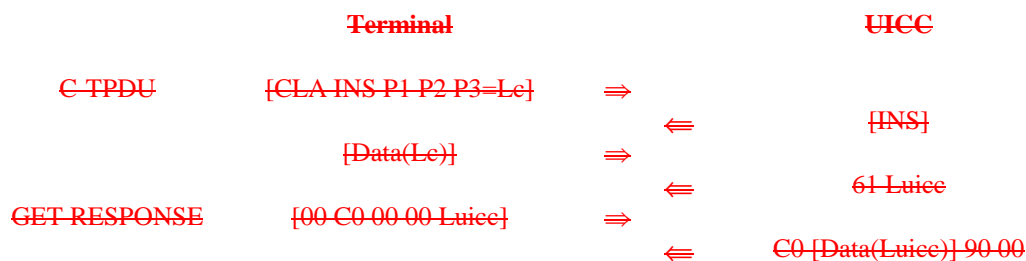
~~A C-APDU of {CLA-INS-P1-P2-Le {Data(Le)}} is passed from the Terminal to the UICC.~~



~~An R-APDU of {90-00} is returned from the UICC to the Terminal.~~

~~C.1.4 Case 4 Command~~

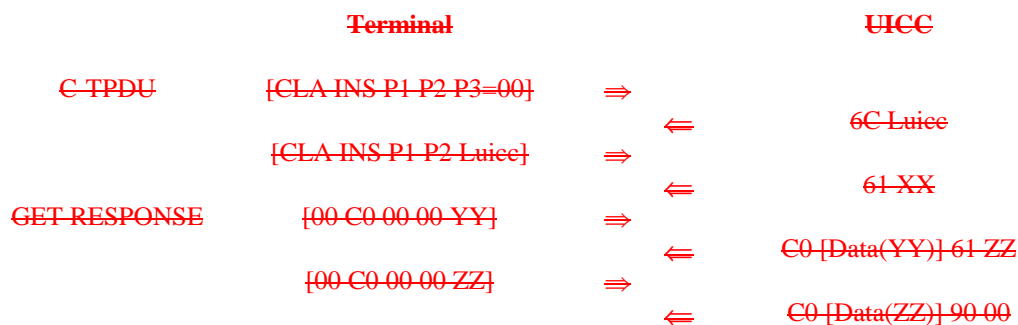
~~A C-APDU of {CLA-INS-P1-P2-Le {Data (Le)} Le=00} is passed from the Terminal to the UICC.~~



~~An R-APDU of {{Data(Luice)}-90-00} is returned from the UICC to the Terminal.~~

~~C.1.5 Case 2 Commands Using the '61' and '6C' Procedure Bytes~~

~~A C-APDU of {CLA-INS-P1-P2-Le=00} is passed from the Terminal to the UICC.~~

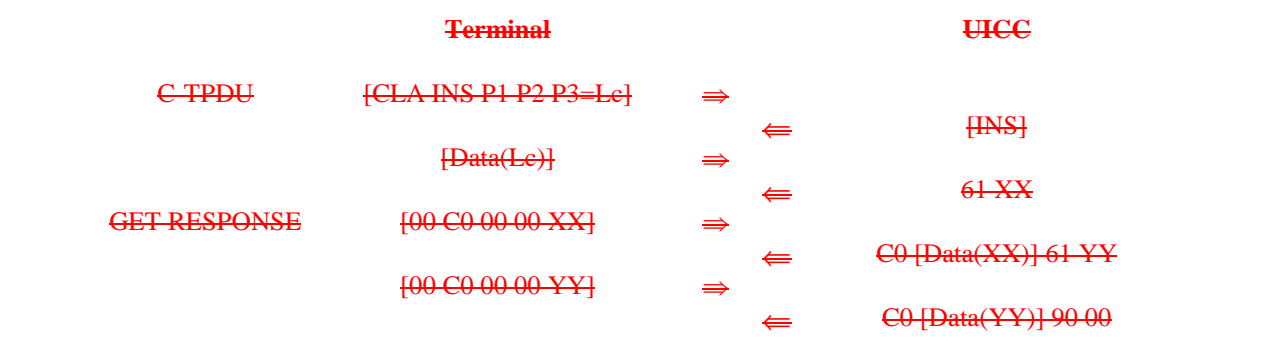


~~Where $YY \leq XX$.~~

~~An R-APDU of {{Data(YY+ZZ)}-90-00} is returned from the UICC to the Terminal.~~

~~C.1.6 Case 4 Command Using the '61' Procedure Byte~~

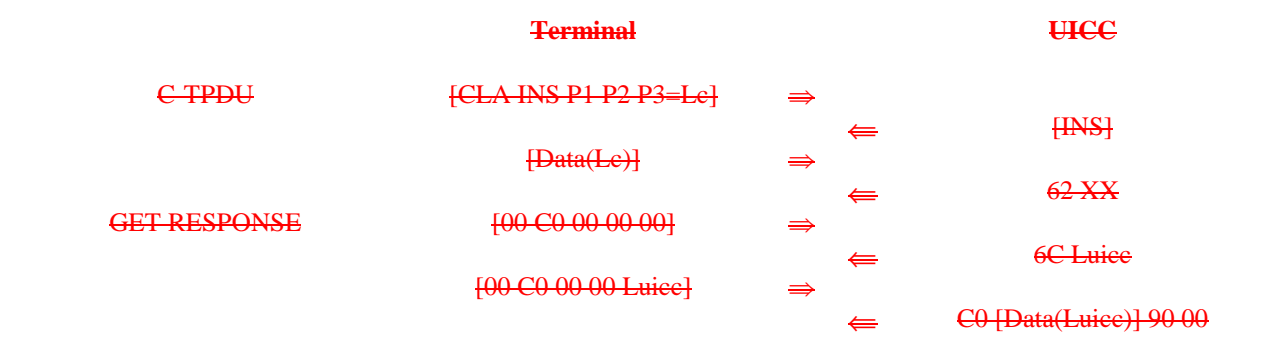
~~A C-APDU of {CLA-INS-P1-P2-Le {Data-Le} Le=00} is passed from the Terminal to the UICC.~~



~~An R-APDU of {{Data(XX+YY)}-90-00} is returned from the UICC to the Terminal.~~

~~C.1.7 Case 4 Command with Warning Condition~~

~~A C-APDU of {CLA-INS-P1-P2-Le {Data-Le} Le=00} is passed from the Terminal to the UICC.~~



~~An R-APDU of {{Data(Luice)}-62-XX} is returned from the Terminal to the UICC containing the data returned together with the warning status bytes.~~

~~Annex D (informative): ATR Examples~~

~~This annex gives examples of ATRs that can be returned by a UICC after a reset.~~

~~1) Example 1: Cold reset for a T=0 protocol only UICC.~~

Character	Value	Description
TS	'3B' or '3F'	Indicates direct or inverse convention
T0	'97'	TA1 and TD1 are present 7 bytes of historical bytes
TA1	'95'	Clock rate conversion factor FI=9 (F=512) Baud rate adjustment factor DI=5 (D=16)
TD1	'80'	TD2 only is present
TD2	'4F'	TA3 only is present Global interface bytes following
TA3	'42'	Clock stop supported (low electrical state) 3V UICC
T1	'80'	
T2	'31'	Card data services
T3	'C0'	SELECT by AID supported EFDIR present
T4	'73'	Card capabilities
T5	'BE'	SFI supported
T6	'20'	
T7	'00'	No extended Lc and Le No Logical channels supported
TCK	'XX'	Check byte

~~2) Example 2: Cold reset for a T=0 and T=1 protocol UICC.~~

Character	Value	Description
TS	'3B' or '3F'	Indicates direct or inverse convention
T0	'97'	TA1, and TD1 are present 7 bytes of historical bytes
TA1	'95'	Clock rate conversion factor FI=9 (F=512) Baud rate adjustment factor DI=5 (D=16)
TD1	'80'	Only TD2 is present Protocol T=0 supported by UICC
TD2	'B1'	TA3, TB3 and TD3 are present Protocol T=1 supported by UICC
TA3	'FE'	IFSC is 254 bytes long
TB3	'00'	Block Waiting Integer=0 Character Waiting Integer=0
TD3	'4F'	Only TA4 is present Global interface bytes following
TA4	'42'	Clock stop supported (low electrical state) 3V UICC
T1	'80'	
T2	'31'	Card data services
T3	'C0'	SELECT by AID supported EFDIR present
T4	'73'	Card capabilities
T5	'BE'	SFI supported
T6	'20'	
T7	'00'	No extended Lc and Le No Logical channels supported
TCK	'XX'	Check byte

~~3) Example 3: Warm reset (specific mode) and T=1 protocol requested by UICC.~~

Character	Value	Description
TS	'3B' or '3F'	Indicates direct or inverse convention
T0	'97'	TA1, and TD1 are present 7 bytes of historical bytes
TA1	'95'	Clock rate conversion factor FI=9 (F=512) Baud rate adjustment factor DI=5 (D=16)
TD1	'91'	TA2 and TD2 are present Protocol T=1 supported by UICC
TA2	'81'	Protocol T=1 used in specific mode Parameters indicated by the interface bytes, and card is enable to change mode
TD2	'B1'	TA3, TB3 and TD3 are present Protocol T=1 supported by UICC
TA3	'FE'	IFSC is 254 bytes long
TB3	'00'	Block Waiting Integer=0 Character Waiting Integer=0
TD3	'0F'	Global interface bytes following (none so use previous ones)
T1	'80'	
T2	'31'	Card data services
T3	'C0'	SELECT by AID supported EF _{DIR} present
T4	'73'	Card capabilities
T5	'BE'	SFI supported
T6	'20'	
T7	'00'	No extended Lc and Le No Logical channels supported
TCK	'XX'	Check byte

~~Annex E (informative): Security Attributes Mechanisms and Examples~~

~~E.1 Coding~~

Two codings are defined:

- ~~— a compact coding based on bitmaps;~~
- ~~— an expanded coding which is an extension of the compact coding with intermediate scope containing bitmap and TLV list management.~~

~~The security conditions for bits not set to '1' in the AM byte are set to NEVER by default.~~

~~E.2 Compact format~~

~~The compact format access rule is indicated by tag '8C' in the FCP. An access rule in this format is encoded with:~~

- ~~— an AM byte as defined in ISO/IEC 7816-9 [17];~~
- ~~— one or more SC bytes as defined in ISO/IEC 7816-9 [17].~~

~~E.2.1 AM byte~~

~~The AM byte conveys two types of information:~~

- ~~— interpretation of the AM byte itself;~~
- ~~— number of SC bytes in the access rule.~~

~~If b8 in the AM byte is set to '0' the AM byte is followed by a number of SC bytes equal to the number of bits set to '1' in the AM byte (excluding b8). Each SC bytes codes the conditions relevant to a set of commands, in the same order (b7 to b1) as in the AM byte. When b8 is set to '1' the usage of b7-b4 is proprietary.~~

~~When multiple sets of an AM byte and one or more corresponding SC bytes are present in the value field of the DO, tag '8C' they represent an OR condition.~~

~~E.2.2 SC byte~~

~~The SC byte specifies which security mechanisms are necessary to conform to the access rules, see ISO/IEC 7816-9 [17]. The 4 most significant bits (b8-b5) indicate the required security condition. An SE may be specified in bits b4-b1. If an SE is specified, the mechanisms that may be defined in it for external authentication, user authentication and command protection shall be used, if indicated by bits b4-b1.~~

~~If bit b8 is set to '1' all conditions in bits b7-b5 shall be satisfied. If bit b8 is set to '0' at least one of the conditions set in bits b7-b5 shall be satisfied. If b7 is set to '1', the CRT of the SE indicated in bits b4-b1 describes whether secure messaging shall apply to the command APDU, the response APDU or both.~~

~~E.2.3 Examples~~

~~For EFs with the access condition ALW for READ and UPDATE the security attribute would look as follows:~~

Tag	L	AM	SC	SC
'8C'	'03'	'03'	'00'	'00'

For EFs with the access condition ALW for READ and NEV for all other access conditions the security attribute would look as follows:

Tag	L	AM	SC
'8C'	'02'	'04'	'00'

For EF_{DIR} and EF_{ICC} the access rule would be as follows. READ is set to always UPDATE, DEACTIVATE and ACTIVATE is set to ADM. The ADM condition is indicated as a user authentication. The key reference is implicitly known.

Tag	L	AM	SC	SC	SC	SC
'8C'	'05'	'1B'	'90'	'90'	'90'	'00'

E.3 — Expanded format

In the expanded format AM_DOs and SC_DOs are used to create the access rules. The expanded format access rule is indicated by tag 'AB' in the FCI. An access rule in this format is encoded with an AM_DO followed by a sequence of SC_DOs.

E.3.1 — AM_DO

The AM_DO is defined in ISO/IEC 7816-9 [17]. The content of the AM_DO is defined by the tag value. Tag '80' indicates that the AM_DO contains an AM byte. Tags '81'-'8F' indicates that the AM_DO contains a command description. The content of the command description is dependent upon the tag value as defined in ISO/IEC 7816-9 [17]. Tag '9C' indicates that the AM_DO contains a proprietary state machine description.

When multiple sets of an AM_DO and one or more corresponding SC_DOs are present in the value field of the DO, tag 'AB', they represent an OR condition.

E.3.2 — SC_DO

The SC_DO is defined in ISO/IEC 7816-9 [17]. The SC_DO definition contains an OR and an AND template. Several SC_DOs may be attached to a particular operation.

- if the SC_DOs are encapsulated in an OR template, then only one of the security conditions has to be fulfilled for the operation to be allowed;
- if the SC_DOs are not to be encapsulated in an OR template or if the SC_DOs are encapsulated in an AND template, then all security conditions shall be fulfilled before the operation is allowed.

E.3.3 — Access rule referencing

Access rules in expanded format (AM_DOs and SC_DOs) may be stored in a linear fixed/variable EF, each record contain one or more rules, as defined in ISO/IEC 7816-9 [17]. The access rule file may be an internal file, referenced implicitly, or may be referenced explicitly, e.g. by a file ID. The access rule stored in a file is indicated by tag '8B' in the FCI. The value of this DO contains at least one record number, called ARR. The DO can contain:

- a single byte containing the record number of the rule, valid if the access rule file is (implicitly) known;
- three bytes containing two bytes with the File ID of the access rule file followed by one byte with the record number for the access rule;

- if the value filed is coded with a length of $2 \times n$, for $n > 1$, it contains one or more SEID/ARR pairs, where the SEID codes the SE number on one byte. For each SE number, the access rules indicated in the ARR following its SE number are valid.

E.3.4 Examples

The access rule for EF_{PL} would look as follows. The READ and SEARCH access condition is ALWAYS. The UPDATE access condition is Application1 PIN or Application2 PIN.

Tag	L	AM_DO Tag	L	V	OR Tag	L	SC_DO Tag	L	Key Ref Tag	L	V	Usage Qualifier	L	V	SC_DO Tag	L	Key Ref Tag	L	V	Usage Qualifier	L	V	AM_DO Tag	L	V	SC_DO Tag	L
'AB'	'1A'	'80'	'01'	'02'	'A0'	'10'	'A4'	'06'	'83'	'01'	'01'	'95'	'01'	'08'	'A4'	'06'	'83'	'01'	'02'	'95'	'01'	'08'	'80'	'01'	'01'	'90'	'00'

Annex F (Informative):

Example of contents of EF_{ARR} '2F06'

F.1

Sample content of the EF_{ARR}

This annex contains an example of the contents of EF_{ARR} '2F06'.

Table F.1.1: Access Rule References for files located at the MF level

ARR Record	Appli cable	Access Condition	AM DO	LEN	Value	SCDO: CRT Tag	Security Condition	Len	Value					
									Key Ref Tag	Len	Value	Usage Qualifier Tag	Len	Value
01	EF	READ UPDATE/ DE-ACTIVATE/ ACTIVATE	'80' '80'	'01' '01'	'01' '1A"	'90' 'A4'	ALW Level-5	'00' '06'	'83'	'01'	'0X'	'95'	'01'	'YY'
02	EF	READ UPDATE/ DEACTIVATE/ ACTIVATE	'80' '80'	'01' '01'	'01' '18"	'90' 'A4'	ALW Level-5	'00' '06'	'83'	'01'	'0X'	'95'	'01'	'YY'
03	EF	READ UPDATE/ DEACTIVATE/ ACTIVATE	'80' '80'	'01' '01'	'01' '1A"	'90' 'A4'	ALW Level-5	'06' '06'	'83'	'01'	'01'	'95'	'01'	'01'
									'83'	'01'	'0X'	'95'	'01'	'YY'

The value X in table F.1.1 shall be according to level 5 in table 9.3. The value 'YY' in table F.1.1 shall be in accordance with ISO/IEC 7816-9 [17].

~~Annex G (informative): Access Rules Referencing (ARR)~~

~~G.1 Sample content of EF_{ARR}~~

~~This annex contains a set of access rule examples that are stored in EF_{ARR}. The access rules are referenced using tag '8B' in the FCP.~~

~~The following definitions apply:~~

- ~~— the application PIN is referred to as PIN Appl. 1 global (key reference '01');~~
- ~~— the UICC supports the usage of a universal PIN, see subclause 9.4.1, that is referred to as UNIVERSAL PIN (key reference '11');~~
- ~~— the application PIN2 is referred to as Second PIN Appl.1 local (key reference '81');~~
- ~~— access condition ADM is referenced as Level 5/Level 6 (key reference 'YZ') where:~~
 - ~~— 'Y' = '0' for Level 5 and 'Y' = '8' for Level 6;~~
 - ~~— 'Z' = 'A' to 'E' for Level 5 and Level 6;~~
- ~~— the value 'XX' for the usage qualifier for key reference value 'YZ' is according to ISO/IEC 7816-9 [17].~~

Table G1.1: Application Access Rule References

ARR Record	Applicable	Access Condition	AM-DO	LEN	Value	SCDO : CRT-Tag	Security Condition	Len	Value					
									Key Ref Tag	Len	Value	Usage Qualifier Tag	Len	Value
01	EF	READ	'80'	'01'	'01'	'90'	ALW	'00'	-	-	-	-	-	-
02	EF	READ UPDATE DEACTIVATE/ ACTIVATE	'80' '80'	'01' '01'	'01' '02' '18'	'90' 'A4' 'A4'	ALW PIN-Appl-1-global Level-5/Level-6	'00' '06' '06'	'83' '83'	'01' '01'	'01' 'YZ'	'95' '95'	'01' '01'	'08' 'XX'
03	EF	READ UPDATE/ DEACTIVATE/ ACTIVATE	'80' '80'	'01' '01'	'01' '1A"	'A4' 'A4'	PIN-Appl-1-global Level-5/Level-6	'06' '06'	'83' '83'	'01' '01'	'01' 'YZ'	'95' '95'	'01' '01'	'08' 'XX'
04	EF	READ/UPDATE DEACTIVATE/ ACTIVATE	'80' '80'	'01' '01'	'03' '18'	'A4' 'A4'	PIN-Appl-1-global Level-5/Level-6	'06' '06'	'83' '83'	'01' '01'	'01' 'YZ'	'95' '95'	'01' '01'	'08' 'XX'
05	EF	READ UPDATE DEACTIVATE/ ACTIVATE	'80' '80' '80'	'01' '01' '01'	'01' '02' '18'	'A4' 'A4' 'A4'	PIN-Appl-1-global PIN2-Appl-1-local Level-5/Level-6	'00' '06' '06'	'83' '83' '83'	'01' '01' '01'	'01' '81' 'YZ'	'95' '95' '95'	'01' '01' '01'	'08' '08' 'XX'
06	EF	READ UPDATE/ DEACTIVATE/ ACTIVATE	'80' '80'	'01' '01'	'01' '1A"	'90' 'A4'	ALW Level-5/Level-6	'00' '06'	'83'	'01'	'YZ'	'95'	'01'	'XX'
07	EF	READ/UPDATE/ ACTIVATE DEACTIVATE	'80' '80'	'01' '01'	'13' '08'	'A4' 'A4'	PIN-Appl-1-global Level-5/Level-6	'06' '06'	'83' '83'	'01' '01'	'01' 'YZ'	'95' '95'	'01' '01'	'08' 'XX'
08	EF	READ/UPDATE/ ACTIVATE/ DEACTIVATE	'80'	'01'	'1B'	'A4'	Level-5/Level-6	'06'	'83'	'01'	'YZ'	'95'	'01'	'XX'
09	EF	READ/UPDATE DEACTIVATE/ ACTIVATE INCREASE	'80' '80'	'01' '01'	'03' '18'	'A4' 'A4'	PIN-Appl-1-global Level-5/Level-6	'06' '06'	'83' '83'	'01' '01'	'01' 'YZ'	'95' '95'	'01' '01'	'08' 'XX'
10	EF	READ/UPDATE DEACTIVATE/ ACTIVATE INCREASE	'80' '80'	'01' '01'	'03' '18'	'A4' 'A4'	PIN-Appl-1-global Level-5/Level-6	'06' '06'	'83' '83'	'01' '01'	'01' 'YZ'	'95' '95'	'01' '01'	'08' 'XX'
11	EF	READ UPDATE DEACTIVATE/ ACTIVATE	'80' '80' '80'	'01' '01' '01'	'01' '02' '18'	'90' 'A4' 'A4'	ALW Universal-PIN Level-5/Level-6	'00' '06' '06'	'83' '83'	'01' '01'	'11' 'YZ'	'95' '95'	'01' '01'	'08' 'XX'
12	EF	READ UPDATE/ DEACTIVATE/ ACTIVATE	'80' '80'	'01' '01'	'01' '1A"	'A4' 'A4'	Universal-PIN Level-5/Level-6	'06' '06'	'83' '83'	'01' '01'	'11' 'YZ'	'95' '95'	'01' '01'	'08' 'XX'
13	EF	READ/UPDATE DEACTIVATE/A CTIVATE	'80' '80'	'01' '01'	'03' '18'	'A4' 'A4'	Universal-PIN Level-5/Level-6	'06' '06'	'83' '83'	'01' '01'	'11' 'YZ'	'95' '95'	'01' '01'	'08' 'XX'
14	EF	READ UPDATE DEACTIVATE/ ACTIVATE	'80' '80' '80'	'01' '01' '01'	'01' '02' '18'	'A4' 'A4' 'A4'	Universal-PIN PIN2-Appl-1-local Level-5/Level-6	'00' '06' '06'	'83' '83' '83'	'01' '01' '01'	'11' '81' 'YZ'	'95' '95' '95'	'01' '01' '01'	'08' '08' 'XX'
15	EF	READ UPDATE/ DEACTIVATE/ ACTIVATE	'80' '80'	'01' '01'	'01' '1A"	'90' 'A4'	ALW Level-5/Level-6	'00' '06'	'83'	'01'	'YZ'	'95'	'01'	'XX'
16	EF	READ/UPDATE/ ACTIVATE DEACTIVATE	'80' '80'	'01' '01'	'13' '08'	'A4' 'A4'	Universal-PIN Level-5/Level-6	'06' '06'	'83' '83'	'01' '01'	'11' 'YZ'	'95' '95'	'01' '01'	'08' 'XX'
17	EF	READ/UPDATE/ ACTIVATE/ DEACTIVATE	'80'	'01'	'1B'	'A4'	Level-5/Level-6	'06'	'83'	'01'	'YZ'	'95'	'01'	'XX'
18	EF	READ/UPDATE DEACTIVATE/ ACTIVATE INCREASE	'80' '80'	'01' '01'	'03' '18'	'A4' 'A4'	Universal-PIN Level-5/Level-6	'06' '06'	'83' '83'	'01' '01'	'11' 'YZ'	'95' '95'	'01' '01'	'08' 'XX'
19	EF	READ/UPDATE DEACTIVATE/ ACTIVATE INCREASE	'80' '80'	'01' '01'	'03' '18'	'A4' 'A4'	Universal-PIN Level-5/Level-6	'06' '06'	'83' '83'	'01' '01'	'11' 'YZ'	'95' '95'	'01' '01'	'08' 'XX'
			'84'	'01'	'32'	'A4'	PIN2-Appl-1-global	'06'	'83'	'01'	'81'	'95'	'01'	'08'

Table G.1.2: DF-Telecom Access Rule References

ARR Record	Applic- able	Access Condition	AM-DO	L	V	SCDO CRT Tag	Security-Condition	L	SCDO CRT Tag	L	Value						SCDO CRT Tag	L	Value						
											Key Ref Tag	L	V	Usage Qualifier Tag	L	V			Key Ref Tag	L	V	Usage Qualifier Tag	L	V	
01	EF	READ	'80'	'01'	'01'	'90'	ALW	'00'			-	-	-	-	-			-	-	-	-	-	-		
02	EF	READ UPDATE DEACTIVATE/ ACTIVATE	'80' '80' '80'	'01' '01' '01'	'01' '02' '18'	'90' 'A0' 'A4'	ALW PIN-Appl-1-global-OR-PIN-Appl-2 Level-5	'00' '10' '06'		'A4'	'06'	'83' '83'	'01' '01'	'01' '02'	'95' '95'	'01' '01'	'08' 'XX'	'A4'	'06'	'83'	'01'	'02'	'95'	'01'	'08'
03	EF	READ UPDATE/ DEACTIVATE/ ACTIVATE	'80' '80'	'01' '01'	'01' '1A"	'A0' 'A4'	PIN-Appl-1-global-OR-PIN-Appl-2 Level-5	'10' '06'		'A4'		'83' '83'	'01' '01'	'01' '02'	'95' '95'	'01' '01'	'08' 'XX'	'A4'	'06'	'83'	'01'	'02'	'95'	'01'	'08'
04	EF	READ/UPDATE DEACTIVATE/ ACTIVATE	'80' '80'	'01' '01'	'03' '18'	'A0' 'A4'	PIN-Appl-1-global-OR-PIN-Appl-2 Level-5	'10' '06'		'A4'		'83' '83'	'01' '01'	'01' '02'	'95' '95'	'01' '01'	'08' 'XX'	'A4'	'06'	'83'	'01'	'02'	'95'	'01'	'08'
05	EF	READ UPDATE/ DEACTIVATE/ ACTIVATE	'80' '80'	'01' '01'	'01' '1A"	'90' 'A4'	ALW Level-5	'00' '06'				'83'	'01'	'02'	'95'	'01'	'XX'								
06	EF	READ/ UPDATE/ ACTIVATE DEACTIVATE	'80' '80'	'01' '01'	'13' '08'	'A0' 'A4'	PIN-Appl-1-global-OR-PIN-Appl-2 Level-5	'10' '06'		'A4'		'83' '83'	'01' '01'	'01' '02'	'95' '95'	'01' '01'	'08' 'XX'	'A4'	'06'	'83'	'01'	'02'	'95'	'01'	'08'
07	EF	READ/UPDATE/ DEACTIVATE/ ACTIVATE	'80'	'01'	'1B'	'A4'	Level-5	'06'				'83'	'01'	'02'	'95'	'01'	'XX'								