

Source: **TSG SA WG2**
Title: **Coversheet for 23.110**
Agenda Item: **5.2.3**

Release 1999 Submission form

Work Area / Item:		UMTS Access Stratum; Services and Functions (3G TS 23.110 version 3.2.0)			
Affects:	UE/MS: X	CN: X	UTRAN: X	Compatibility Issues:	Yes: No:
Expected Completion Date:		Spring 2000, related to cell broadcast issues.			
Services impacted:		Cell broadcast.			
Specifications affected:		RAN2: 23.321(?), 23.322 (?), 23.301, 23.303, 23.304, 23.324.			
Tasks within work which are not complete:			New model to solve Contentious Issues (see below).		
Consequences if not included in Release 1999:			The Cell Broadcast feature may be delayed.		
Accepted by TSG#	(SM G#28)	For late inclusion in Release 1999: SA#7			

Abstract of document: TS 23.110 describes the main functions visible at the boundary between the Access Stratum and the rest of the system, it describes in general terms the information flows, both control and user data, over this boundary and relevant for the Access Stratum.

Contentious Issues:

- Broadcast/Multicast services can not be described using the services and functions defined in the 23.110. The nature of Broadcast/Multicast services ,like Cell Broadcast Service (CBS), are very different from other already described services. The following list highlights these differences:
 - CBS uses two segments with different QoS requirements to deliver CB messages to the UE
 1. From Cell Broadcast Center (CBC) to RNC, e.g. a segment with 1 second turnaround time, with interactive class, and reliable transport.
 2. From RNC to UE, e.g. a segment with maximum delay of 10 seconds and a background class.
 - The service primitives used between the two legs may also be different; i.e., the related SAPs to those primitives offered by the Access Stratum may be different in the two segments
 - CBS traffic is asymmetric in nature. The communication flow is only in one direction from the CBC to the UE. There is no uplink channel needed and the UE can not initiate a communication or request specific information.

Changes to be performed:

- Introduce a new SAP
- Mapping Example

3G TS 23.110 3.42.0 (1999-0411)

Technical Specification

3rd Generation Partnership Project; Technical Specification Group Services and System Aspects UMTS Access Stratum; Services and Functions (3G TS 23.110 version 3.42.0)



The present document has been developed within the 3rd Generation Partnership Project (3GPP™) and may be further elaborated for the purposes of 3GPP. The present document has not been subject to any approval process by the 3GPP Organisational Partners and shall not be implemented. This Specification is provided for future development work within 3GPP only. The Organisational Partners accept no liability for any use of this Specification. Specifications and reports for implementation of the 3GPP™ system should be obtained via the 3GPP Organisational Partners' Publications Offices.

Contents

Foreword.....	77
1 Scope.....	88
2 References	88
3 Definitions and abbreviations	88
3.1 Definitions	88
3.2 Abbreviations.....	99
4 Basic Assumptions.....	99
4.1 Boundaries of the Access Stratum	99
4.2 Main design guidelines	99
5 Functions location inside/outside Access Stratum	1040
5.1 Call Control	1144
5.2 (Connection) Bearer Control	1144
5.3 Supplementary Services (CLIP, CF etc.)	1242
5.4 Location Management	1242
5.5 Attach/ Detach	1242
5.6 Resource management	1242
5.7 Handover	1242
5.7.1 Handover - outside Access Stratum.....	1242
5.7.2 Handover - inside Access Stratum.....	1242
5.7.3 Handover scenarios supported by the Iu interface.....	1242
5.7.3.1 Classification A	1242
5.7.3.2 Classification B	1343
5.7.3.3 Classification C.....	1343
5.7.3.4 Classification D	1444
5.8 Macrodiversity.....	1444
5.9 Encryption.....	1444
5.10 Authentication of Subscriber	1444
5.11 (Non source dependent coding) Compression	1444
5.12 Source (e.g. voice or video) Coding	1444
5.13 Radio Channel Coding.....	1444
5.14 UE Location Identification	1444
5.15 Charging	1545
6 Access Stratum services	1545
6.1 Service Access Points (SAPs).....	1545
6.1.1 General Control SAPs	1646
6.1.2 Notification SAPs.....	1646
6.1.3 Dedicated Control SAPs	1646
6.2 Operations.....	1747
6.2.1 General.....	1747
6.2.2 Common operations	1747
6.2.2.1 General Control SAP.....	1747
6.2.2.1.1 Information broadcast.....	1747
6.2.2.2 Notification SAPs.....	1848
6.2.2.2.1 Paging Request, IF side.....	1848
6.2.2.2.2 Notification Broadcast Request, IF side.....	1848
6.2.2.2.3 Notification Indication, UE side	1949
6.2.2.3 Dedicated Control SAPs.....	1949
6.2.2.3.1 UE Side Initiated Connection Establishment	1949
6.2.2.3.2 Connection Release.....	2020
6.2.2.3.3 Information Transfer.....	2020
6.2.2.3.4 IF Side Initiated Radio Access Bearer Establishment.....	2222
6.2.2.3.4.1 IF Side Initiated Radio Access Bearer Establishment Request, IF Side.....	2222

6.2.2.3.4.2	IF Side Initiated Radio Access Bearer Establishment Indication, UE Side	2222
6.2.2.3.4.3	IF Side Initiated Radio Access Bearer Establishment Response, UE Side	2222
6.2.2.3.4.4	IF Side Initiated Radio Access Bearer Establishment Confirm, IF Side	2222
6.2.2.3.5	IF Side Initiated Radio Access Bearer Release	2323
6.2.2.3.5.1	IF Side Initiated Radio Access Bearer Release Request, IF Side	2323
6.2.2.3.5.2	IF Side Initiated Radio Access Bearer Release Indication, UE Side	2323
6.2.3	IF side only operations	2323
6.2.3.1	Dedicated control SAPs	2323
6.2.3.1.1	Position update indication	2323
6.2.3.1.2	Connection loss indication	2323
6.2.3.1.3	Streamlining required indication	2323
6.2.3.1.4	Branch establishment request	2424
6.2.3.1.5	Branch establishment confirm	2424
6.2.3.1.6	UE location information request	2424
6.2.3.1.7	UE location information confirm	2424
6.2.4	UE side only operations	2525
6.2.4.1	Dedicated control SAPs	2525
6.2.4.1.1	Connection loss indication	2525
6.3	Parameters structure	2525
6.3.1	Local	2525
6.3.2	Bit string	2525
6.3.3	Enumerated	2525
6.3.4	Geographical description	2525
6.3.5	QoS	2525
6.3.6	Route	2727
6.3.7	Transaction identifier	2727
6.3.8	Transaction list	2727
6.3.9	Transmission mode	2727
6.3.10	AN/CN Point List	2727
6.3.11	Localisation	2727
History		3030
Foreword		5
1 — Scope		6
2 — References		6
3 — Definitions and abbreviations		6
3.1 — Definitions		6
3.2 — Abbreviations		7
4 — Basic Assumptions		7
4.1 — Boundaries of the Access Stratum		7
4.2 — Main design guidelines		7
5 — Functions location inside/outside Access Stratum		8
5.1 — Call Control		9
5.2 — (Connection) Bearer Control		9
5.3 — Supplementary Services (CLIP, CF etc.)		10
5.4 — Location Management		10
5.5 — Attach/ Detach		10
5.6 — Resource management		10
5.7 — Handover		10
5.7.1 — Handover — outside Access Stratum		10
5.7.2 — Handover — inside Access Stratum		10
5.7.3 — Handover scenarios supported by the Iu interface		10
5.7.3.1 — Classification A		10
5.7.3.2 — Classification B		11
5.7.3.3 — Classification C		11
5.7.3.4 — Classification D		12
5.8 — Macrodiversity		12

5.9	Encryption	12
5.10	Authentication of Subscriber	12
5.11	(Non source dependent coding) Compression	12
5.12	Source (e.g. voice or video) Coding	12
5.13	Radio Channel Coding	12
5.14	UE Location Identification	12
5.15	Charging	13
6	Access Stratum services	13
6.1	Service Access Points (SAPs)	13
6.1.1	General Control SAPs	14
6.1.2	Notification SAPs	14
6.1.3	Dedicated Control SAPs	14
6.2	Operations	15
6.2.1	General	15
6.2.2	Common operations	15
6.2.2.1	General Control SAP	15
6.2.2.1.1	Information broadcast	15
6.2.2.2	Notification SAPs	16
6.2.2.2.1	Paging Request, IF side	16
6.2.2.2.2	Notification Broadcast Request, IF side	16
6.2.2.2.3	Notification Indication, UE side	17
6.2.2.3	Dedicated Control SAPs	17
6.2.2.3.1	UE Side Initiated Connection Establishment	17
6.2.2.3.2	Connection Release	18
6.2.2.3.3	Information Transfer	18
6.2.2.3.4	IF Side Initiated Radio Access Bearer Establishment	20
6.2.2.3.4.1	IF Side Initiated Radio Access Bearer Establishment Request, IF Side	20
6.2.2.3.4.2	IF Side Initiated Radio Access Bearer Establishment Indication, UE Side	20
6.2.2.3.4.3	IF Side Initiated Radio Access Bearer Establishment Response, UE Side	20
6.2.2.3.4.4	IF Side Initiated Radio Access Bearer Establishment Confirm, IF Side	20
6.2.2.3.5	IF Side Initiated Radio Access Bearer Release	21
6.2.2.3.5.1	IF Side Initiated Radio Access Bearer Release Request, IF Side	21
6.2.2.3.5.2	IF Side Initiated Radio Access Bearer Release Indication, UE Side	21
6.2.3	IF side only operations	21
6.2.3.1	Dedicated control SAPs	21
6.2.3.1.1	Position update indication	21
6.2.3.1.2	Connection loss indication	21
6.2.3.1.3	Streamlining required indication	21
6.2.3.1.4	Branch establishment request	22
6.2.3.1.5	Branch establishment confirm	22
6.2.3.1.6	UE location information request	22
6.2.3.1.7	UE location information confirm	22
6.2.4	UE side only operations	23
6.2.4.1	Dedicated control SAPs	23
6.2.4.1.1	Connection loss indication	23
6.3	Parameters structure	23
6.3.1	Local	23
6.3.2	Bit string	23
6.3.3	Enumerated	23
6.3.4	Geographical description	23
6.3.5	QoS	23
6.3.6	Route	25
6.3.7	Transaction identifier	25
6.3.8	Transaction list	25
6.3.9	Transmission mode	25
6.3.10	AN/CN Point List	25
6.3.11	Localisation	25

Annex A (informative): Examples of Known Services Mapped on the Proposed Radio Access Bearer Service Attributes	26
History.....	28

1 Scope

This document specifies the services provided by the Access Stratum to the rest of the system. The adopted architecture is given by UMTS 23.01 "General Architecture"[[22](#)].

This document describes the main functions visible at the boundary between the Access Stratum and the rest of the system, it describes in general terms the information flows, both control and user data, over this boundary and relevant for the Access Stratum.

This document shall be the basis of the detailed specifications of the protocols which rule the information flows, both control and user data, between the Access Stratum and the parts of UMTS outside the Access Stratum, and of the detailed specifications of the UTRAN. These detailed specifications are to be found in other Technical Specifications.

2 References

The following documents contain provisions which, through reference in this text, constitute provisions of the present document.

- References are either specific (identified by date of publication, edition number, version number, etc.) or non-specific.
- For a specific reference, subsequent revisions do not apply.
- For a non-specific reference, the latest version applies.
- A non-specific reference to an ETS shall also be taken to refer to later versions published as an EN with the same number.

[[14](#)] UMTS 22.101: "Universal Mobile Telecommunications System (UMTS): Service aspects; Service principles".

[[22](#)] UMTS 23.101: "Universal Mobile Telecommunications System (UMTS): General UMTS Architecture"

[[33](#)] UMTS 23.105: "Universal Mobile Telecommunications System (UMTS): Network Principles"

[[44](#)] ITU-T X.210: "Information Technology - Open Systems Interconnection - Basic Reference Model: Conventions for the Definition of OSI Services"; November 1993.

[[5](#)] [3G TS 23.107: "QoS Concept and Architecture"](#).

3 Definitions and abbreviations

3.1 Definitions

For the purposes of the present document, the following definitions apply:

For the purposes of the present document, the following definitions from other documents are referred to:

Access Stratum: defined in [[22](#)].

Access Network: defined in [[22](#)].

Edge-Node: a core network node which is connected to the UTRAN at a particular instance

URAN: defined in [TBD].

3.2 Abbreviations

For the purposes of the present document, the following abbreviations apply:

AN	Access Network
AS	Access Stratum
CC	Call Control
DC	Dedicated Control SAP
CN	Core Network
GC	General Control (SAP)
GPRS	General Packet Radio Service
GSM	Global System for Mobile communications
HPLMN	Home Public Land Mobile Network
IF	Infrastructure
ME	Mobile Equipment
MM	Mobility Management
MS	Mobile Station
NAS	Non Access Stratum
Nt	Notification (SAP)
PDN	Packet Data Network
PTM	Point to Multipoint
<u>RAN</u>	<u>Radio Access Network</u>
SAP	Service Access Point
SAPI	Service Access Point Identifier [???
SIM	Subscriber Identity Module
SMS	Short Message Service
SS	Supplementary Services
UE	User Equipment
UMTS	Universal Mobile Telecommunications System
URAN	UMTS Radio Access Network
USIM	UMTS Subscriber Identity Module
USSD	Unstructured Supplementary Service Data
UTRA	UMTS Terrestrial Radio Access
UTRAN	UMTS Terrestrial Radio Access Network
VBS	Voice Broadcast Service
VGCS	Voice Group Call Service
VPLMN	Visited Public Land Mobile Network

4 Basic Assumptions

4.1 Boundaries of the Access Stratum

The Access Stratum (AS) is defined in [22]. It consists of a functional grouping which includes all the layers embedded in the URAN; and part of the layers in the User Equipment (UE) and the infrastructure (IF); i.e. the edge-node. Its boundary is the frontier between the layers which are independent of the access technique and the ones which are dependent on it. This frontier is located in the UE (mobile boundary) and in an edge-node (fixed boundary). There is a direct or "transparent" dialogue (i.e. not interpreted by the AS) between the UE and the edge-node for the Non-Access Stratum layers.

4.2 Main design guidelines

- 1) The Access Stratum contains all access specific functionality, e.g. all mode specific functionality in case of the UTRAN.
- 2) Reconfiguration of the AN, or changes in the AN domain functionality shall have minimal impact on Core Network functions, and vice-versa.
- 3) A given Access Network (e.g., the UTRAN) may provide access to different type of Core Networks via the I_u

reference point.

- 4) The services, access signalling, mobility and subscriber management specific to each Core Network are completely outside the Access Stratum, and are transferred transparently by the Access Stratum.
- 5) The Access Stratum provides flexible radio access bearers characterised by parameters describing the type of information and QoS transported over the radio interface (i.e. not the actual radio resources). Some radio access bearers may be asymmetric, i.e., have different parameters on uplink and downlink.
- 6) There are radio access bearers for both connection oriented packet-switched services, connectionless (store-and-forward) services, and circuit-switched traffic.
- 7) Parameters for connection-oriented radio access bearers may change during connection (bandwidth on demand, quality management).
- 8) Whether a terminal can be registered and have connections to several Core Networks simultaneously (i.e., over different instances of Iu) is FFS.
- 9) The Access Stratum can provide several parallel and independent radio access bearers to one user equipment each with its own characteristics.
- 10) Multimedia is handled outside the Access Stratum by multiplexing several streams onto one radio access bearer or by requesting several parallel radio access bearers. In the latter case, the possibly needed synchronisation is handled outside the Access Stratum.
- 11) Connection of a user equipment to several URAN at a time has to be studied.
- 12) Handover and if applied macrodiversity within one Access Network is handled within the Access Stratum.
- 13) Handover between two Access Networks (e.g., two UTRANs, or between UTRAN and GSM BSS) may use support from the Core Network.
- 14) The Access Stratum should hide all access -specific parameters, e.g., location data provided to the Core Networks should be independent from the actual configuration of the Access Network.
- 15) The user equipment can be connected to different AN/CN points via a single Access Network. The Access Stratum should be able to provide a flexible routing to the appropriate AN/CN point.

5 Functions location inside/outside Access Stratum

Following table shows the functional split between Access Stratum and the rest of the system.

Table 14: Functions inside/outside the Access Stratum

LOCATION	Outside the Access Stratum	Inside the Access Stratum
FUNCTION		
Call set up/release	yes	no
(Connection) Bearer Set-Up Release	CN bearer [tbd]	Radio Access Bearer [tbd]
Supplementary Services	yes	no
Location management	yes (IWF/CN related)	yes (Radio related)
Attach/ Detach	yes	FFS, Contr expected
Resource Management	yes (for NAS resource)	yes (for AS resource incl. radio)
Handover	yes*	yes
Macrodiversity [ffs]	yes*	yes
Encryption	yes	yes**
Authentication	yes	no
compression (non source dependent)	yes	yes
source dependent coding	yes	no
radio channel coding (could be many)	no	yes (could be many)
UE location identification	may be supported	yes
Charging	yes	no
NOTE *: Optionally execution. In some CNs, it may not be present but not full service will be supported (e.g. limited to RLL type of service).		
NOTE **: Contributions expected to clarify the role between encryption and subscriber data.		

5.1 Call Control

This Functionality is placed in the NAS, since it manipulates the call state machine. An example is termination of Q.931 message and sending of ISUP.

Not part of AS. NAS specific signalling messages, e.g. Q.931, Q.2931 and ISUP.

5.2 (Connection) Bearer Control

It is distinguished between the bearers used in the NAS and the common bearer used in the AS (radio access bearer).

Basic principles for radio access bearers are:

- 1) Radio access bearers provide information transport between the non-access stratum parts of the infrastructure side (i.e. the edge node) and the user equipment side. Radio access bearers shall support real time as well as non real time user traffic.
- 2) Radio access bearers must be flexible enough to support different traffic types, activity levels, throughput rates, transfer delays and bit error rates. Attributes allowing efficient use of radio resources are crucial.
- 3) Efficient mapping from the traffic attributes used by non-UMTS applications, given by dominating external network technologies, to the attributes of the radio access bearer layer of the access stratum is essential. Complexity in mapping procedures should be avoided.
- 4) Definitions of traffic attributes and traffic management for radio access bearers shall be consistent with the predominant networking technology on the market (e.g. N-ISDN and IP networks for UMTS phase 1). As networking technologies emerge, adapted radio access bearer attributes and types shall gradually be added.
- 5) Radio access bearer definitions must allow for straightforward and efficient traffic management and resource handling of the radio resources in the access stratum.

This procedure is part of the NAS. Example are 13.0 kbit/s (for GSM speech) and 2B+D (for ISDN BRI).

The protocols required in AS to provide a radio access bearer should be able to describe both packet switch and circuit switch types of connections.

5.3 Supplementary Services (CLIP, CF etc.)

Supplementary services are part of the NAS, since they manipulate the Call state machine.

Supplementary services are not part of AS since they manipulate the call state machine.

5.4 Location Management

"Location Updating Management" and "Paging" is an existing example of Location Management.

Location Management may be supported in the NAS

Radio related Location Management may be part of the AS.

5.5 Attach/ Detach

If the Attach/ Detach procedures are supported in the NAS they use CN specific identifiers to mark the attached/detached subscriber. As an example in GSM, the attach/detach procedure is performed on the IMSI flag, and therefore it is a NAS functionality.

Attach/Detach may be performed in the AS using the URAN unique identifiers. This is FFS.

5.6 Resource management

This function allocates resources for a given information stream, as to allow to convey it with a given QoS. This information stream may support either signalling data (CC, MM, ...) or user data.

Both circuit switched and packet access are supported, offering both connection oriented and connectionless services.

The AS resource management is transparent for the NAS and vice versa.

5.7 Handover

5.7.1 Handover - outside Access Stratum

Handover may be a NAS functionality, but it can not be expected that all CNs will support handover therefore the IWF may take care of any required handover functionality. The AN may leave certain parameters, e.g. the address to a new IWF/CN-AN connection point, to which the IWF/CN may switch if it has the capabilities.

5.7.2 Handover - inside Access Stratum

Handover is performed in the AS, to hide all radio specific details from the NAS.

5.7.3 Handover scenarios supported by the Iu interface

The following sections describe which functions will be supported by the Iu interface. Some functions have no impact on the Iu interface and therefore will be supported de-facto, nevertheless they are explicitly mentioned for completeness of the scenarios.

5.7.3.1 Classification A

Classification A describes the way the handover is prepared :

HO A1: the network has informed the target cell before the MS changes cell;

HO A2: the network has not informed the target cell before the MS changes cell;

HO A3: the mobile has informed the target cell before it leaves the source cell.

HO A1 is typical of the existing handover in GSM.

HO A2 reflects the call re-establishment in GSM, mobile directed handovers in general, or even GPRS to some extent (although the GPRS vocabulary is different).

HO A1, HO A2 and HO A3 shall be supported by the service primitives of the Iu interface.

5.7.3.2 Classification B

Classification B describes the way the decision to initiate a handover is taken:

HO B1: decision is taken by the terminal;

HO B2: decision is taken by the network.

When the network takes the decision, it can be either in the RAN (HO B2a), or in the CN (probably based on information provided by the RAN and/or the MS) (HO B2b).

In order to keep the radio independence from the CN, it would be desirable that the decision be taken only in the RAN. This means that a communication mechanism is needed between URANs, that interface being logically different from the Iu interface.

HO B1 and HO B2 shall be supported by the service primitives of the Iu interface.

NOTE 1: FFS: For HO B2 cases, handover initiation/decisions shall be taken by the source URAN.

NOTE 2: FFS: There is a URAN to URAN signalling mechanism transparent to the CN. A standardised protocol will be implemented across that interface to allow handover decisions by the URAN in HO B2 cases.

5.7.3.3 Classification C

Classification C concerns the kind of handover performed:

- 1) intra-cell handover;
- 2) intra-URAN handover;
- 3) inter-URAN handover (without change of CN access point);
- 4) intra-CN handover with same URAN type;
- 5) intra-CN handover with different URAN type;
- 6) inter-CN handover with same URAN type and same CN type;
- 7) inter-CN handover with different URAN type and same CN type;
- 8) inter-CN handover with same URAN type and different CN type;
- 9) inter-CN handover with different URAN type and different CN type;
- 10) inter-CN handover without change of URAN.

The type of URAN type should be relatively transparent to the Iu interface.

Regarding handovers across multiple CN, it is proposed that this is supported (and this is already possible with GSM).

C1 to C7 scenarios shall be supported by the service primitives of the Iu interface.

NOTE: FFS: scenarios C8 to C10 shall be supported by the service primitives of the Iu interface.

5.7.3.4 Classification D

Regarding how a handover is performed, there is the possibility to either have the notion of anchor point, or not to have it. Example is circuit switched GSM, using anchor points, and GPRS, not using that notion.

Furthermore, the notion of anchor point may be handled differently for the signalling plane and the transmission plane.

The notion of anchor point shall be supported by the service primitives of the Iu interface.

NOTE1: FFS: the notion of transmission plane anchor point is supported by the service primitives of the Iu interface.

NOTE2: FFS: the notion of signalling plane anchor point is supported by the service primitives of the Iu interface.

NOTE3: FFS: the anchor points for the signalling plane and transmission plane need not necessarily be the same or even exist simultaneously. The flexibility should be left in UMTS by the Iu service principles.

5.8 Macrodiversity

(if needed, dependent of the choice of multiple access technology)

Not all IWF/CNs will support macrodiversity.

Macrodiversity may be supported in the AS, dependent on the choice of multiple access technology.

5.9 Encryption

The NAS may support encryption to protect the transmitted data.

The AS needs to support encryption to prevent from eavesdropping at the radio interface.

5.10 Authentication of Subscriber

Subscriber data is stored in the NAS and therefore authentication should be considered a NAS functionality.

NAS data is not stored in the URAN, and subscriber authentication can therefore not be a URAN functionality.

5.11 (Non source dependent coding) Compression

NAS may support compression.

The AS should support compression to optimise usage of radio resources.

5.12 Source (e.g. voice or video) Coding

Source coding is different dependent on IWF/CN and is therefore a NAS functionality.

5.13 Radio Channel Coding

Radio Channel coding is needed due to the radio interface and could therefore be considered a radio functionality. Radio Channel coding is not a NAS functionality.

Radio Channel coding is supported by URAN.

5.14 UE Location Identification

The UE location identification may be supported by the UE and/or the access network side of the AS; i.e., URAN; e.g.,

as defined in the GSM LCS (Location Services) specifications or by some other means. The UE location identification is provided to identify the likely location of specific UEs. This is meant to be used for charging, location-based services, lawful interception, emergency calls, etc., as well as the positioning services.

When location identification is supported by URAN, the following apply,

- 1) URAN obtains 'Area ID' and/or geographic co-ordinates with uncertainty parameters for identification of the likely location of UE, to be sent to the NAS entity side of the CN (i.e., edge node) 'Area ID' represents either a radio access cell/sector or a geographic area. 'Area ID' is coded in the same format as Cell Global Identification (CGI), for compatibility to GSM.
- 2) Location information is categorised to two levels of accuracy. The Basic Level of information is what URAN obtains without extra signalling with the UE. The advanced level is obtained through extra signalling for positioning. Both levels can be used for both, Positioning services and other applications.
- 3) Location information is always at least obtained from URAN by the appropriate edge node(s) at the activation of a Call/PDP Context. Mechanism to make it possible to obtain the location information at the release of a Call/PDP Context should be specified. Location information sent to the edge node at other occasions is on the basis of asynchronous requests from the edge node to URAN. An edge node can request URAN to send the location information with the two types of requests, Type 1 (Direct request) where URAN sends location information only once at the request and Type 2 (Event request) where URAN sends location information at each specified event (e.g. Cell Update) requested by the edge node.

5.15 Charging

The functions related to charging are not part of the AS. These functions are mainly:

- charging information generation;
- charging processing.

6 Access Stratum services

The modelling of the services follow the basic principles as set by ITU-T X.210 [44]. In this recommendation the following figure is given as an example for peer-to-peer connection-mode services.

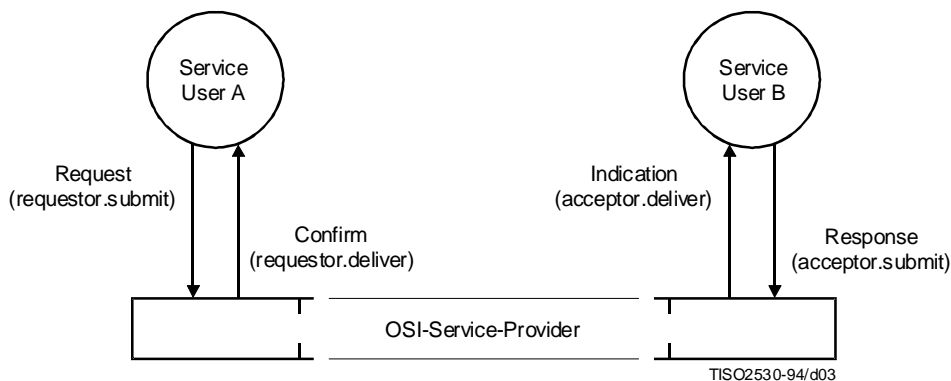


Figure 14: Example of a peer-to-peer connection-mode service [44]

For connectionless-mode services the basic primitives are "request" and "indication".

6.1 Service Access Points (SAPs)

The SAPs offered by the Access Stratum (AS) to the rest of the system (Non Access Stratum: NAS) are reflected in the following figure.

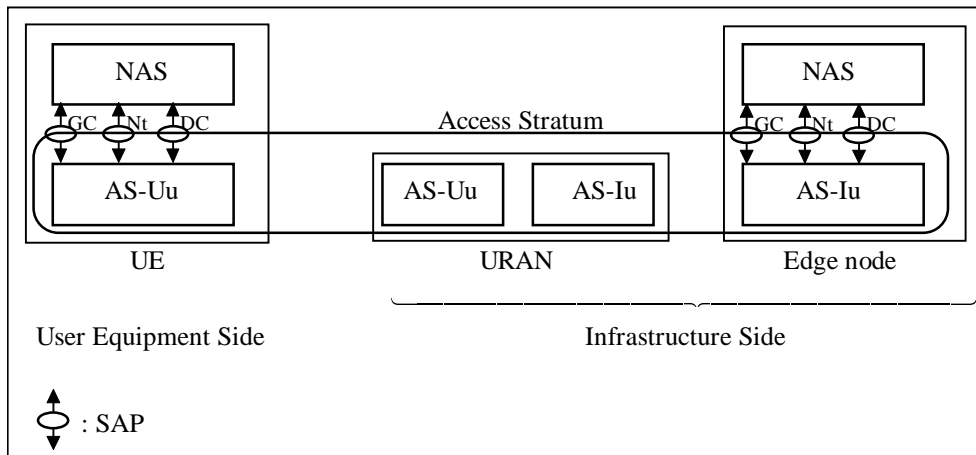


Figure 22: Service Access Points (SAPs) offered by the Access Stratum (AS)

For the time being, the SAPs offered by the AS are symmetric, i.e. the same SAPs are offered on the infrastructure side (CN-AS-AS-Iu) and on the user equipment side (UE-AS-AS-Uu). These SAPs are:

GC: General Control (see 6.1.1 for a general presentation and 6.2.2.1 for a detailed information).

Nt: Notification (see 6.1.2 for a general presentation and 6.2.2.2 for a detailed information).

DC: Dedicated Control (see 6.1.3 for a general presentation and 6.2.2.3 for a detailed information).

Figure 2 shows also, as an example, some details of the AS architecture. The details are out of the scope of this document and are further specified in the 25-series.

This model does not exclude, nor imply, which protocol is specified between the UE-AS entity and the CN-AS entity. These protocols are ‘transparent’ for the AN, but participate in the service provided by the AS.

6.1.1 General Control SAPs

These SAPs are used to enable the Core Network to provide information and to give commands that do not relate to specific users or specific [sessions] (group calls, conference). There is typically one General Control SAP per AN/CN connection point. On the UE side, a possible model is to consider that there is a single General Control SAP in an MS.

6.1.2 Notification SAPs

These SAPs are used to broadcast data to identified Users. The typical use is for initiating paging in the AN. There is typically one Notification SAP per AN/CN connection point. On the UE side, a possible model is to consider that there is a single Notification SAP (a Paging SAP) in an MS.

6.1.3 Dedicated Control SAPs

These SAPs are used to establish, release connections with specific User Equipment, and to exchange information related to these connections. A connection is a relationship between temporary contexts respectively in the AN and in the CN. The context in the AN is initiated at the establishment of the connection, and erased when the connection is released. Several types of connections are identified, such as point connection (single user) and group connections.

There are typically a great number of Dedicated Control SAPs per AN/CN connection point. SAPs are identified by a SAPI at the AS boundary. During the lifetime of a connection, the connection can be identified unambiguously by the SAPI of the associated SAP, and the SAPI is used as a reference in the exchanges at the AS boundary on the infrastructure side.

A SAPI is used as a connection identifier allocated unambiguously to each connection during its lifetime, and used in the exchanges at the AS boundary on the infrastructure side.

On the UE side, a possible modelling is to consider that there is a single dedicated control SAP in an MS.

6.2.2.1.1.2 Information Broadcast Indication, UE Side

The parameters are

Access point reference	local
Broadcast information	bit string

The access point reference identifies the point on the access boundary (e.g., the cell) where the information was received.

NOTE: The access point reference is a local reference, to be used in other primitives at the AS/NAS boundary in the same UE.

6.2.2.2 Notification SAPs

Notification operations consists of sending information to a dedicated user/terminal, or a group of users/terminals over a defined geographic area.

Typically the request is forwarded to the user/terminal on a broadcast resource. If the AN knows of an existing signalling relation to the user/terminal, the information might be sent through the existing relation, according to Access Stratum specifications.

6.2.2.2.1 Paging Request, IF side

The parameters are the following:

User/Terminal Identity	pageable identity
Geographical area where to broadcast	geographical area
Paging resource parameters	paging resource parameters
Information to send	bit string

The user/terminal identity is provided to determine if a signalling relation with the user/terminal exists. The geographical area indicates the area in which the Core Network knows the User/Terminal(s) to be.

The size of the information to send is not bound by this description, but may be constrained by the access system.

The paging resource parameters are used to determine which paging resource to be used when several are available. The organisation of paging resources is known in advance by the User Equipment, and are used by the User Equipment to choose the paging resources to listen to. The exact use of the paging resource parameters is specified as part of Access Stratum specifications.

NOTE: This function is typically used for paging, i.e., to trigger an access from the User/Terminal. However, this is not relevant to the Access Stratum, and other uses can be envisaged without impacting the Access Stratum. The action required from the MS, if any, is indicated, implicitly or explicitly, in the information to send, the content of which being part of the Non Access Strata specifications and not of the Access Stratum specifications.

6.2.2.2.2 Notification Broadcast Request, IF side

The parameters are the following:

Geographical area where to broadcast	geographical area
Notification resource parameters	paging resource parameters
Information to broadcast	bit string

The size of the information to broadcast is not bound by this description, but may be constrained by the access system.

The paging resource parameters are used to determine which paging resource to be used when several are available. The organisation of paging resources is known in advance by the User Equipment, and are used by the User Equipment to

choose the paging resources to listen to. The exact use of the paging resource parameters is specified as part of Access Stratum specifications.

NOTE: This operation is used typically to inform all MSes of some starting or on-going activities, such as group calls.

6.2.2.2.3 Notification Indication, UE side

Parameters

Access point reference	local
Broadcast information	bit string

NOTE: This primitive applies both for a paging sent on broadcast resources and for the reception of an information broadcast to many users.

6.2.2.3 Dedicated Control SAPs

Dedicated Control operations are done within the scope of a connection, embodied by corresponding SAPs on the UE and IF sides. This scope is determined by local references (respectively on the UE side and on the IF side). All operations contain such a local reference, and, at a given AN/CN interconnection point, all operations with the same local reference from the establishment event to the release event pertain to the same connection. The correspondence between Dedicated Control SAPs on the UE and IF side is dynamic, and established through the connection establishment operations.

The local connection references have only a local scope, and their values do not necessarily have any predictable relationship with the corresponding reference local to the other side, or with a reference used over some interface to multiplex the messages pertaining to the connection with messages pertaining to other connections.

6.2.2.3.1 UE Side Initiated Connection Establishment

This operation consists in the establishment of a new connection at the initiative of NAS on the User Equipment side.

6.2.2.3.1.1 UE Side Initiated Connection Establishment Request, UE side

Parameters

Local connection reference	local
Routing parameters	routing parameters
Initial message	bit string

The routing parameters are to be used by the AS on the Infrastructure side to choose the AN/CN connection point through which the connection is to be established.

The initial message is to be forwarded to the non-access strata. The size of the initial message should not be constrained by the access system.

6.2.2.3.1.2 UE Side Initiated Connection Establishment Indication, IF side

Parameters

Local connection reference	local
Initial message	bit string
Localisation data	localisation data

The localisation data indicate the knowledge the AN has of the localisation of the initiating User Equipment. It includes typically a geographical area and some accuracy indication.

band (i.e., together with information transfer) or out-band. Transaction identifiers have only a local significance.

NOTE: There is a difficulty behind the message order. In some cases it may be important to keep message order in a combination of streams, e.g., within a route, or even involving two routes. The model presented so far is too simple to cope with such cases.

A quality of service indication is present in sending requests. This covers such aspects as message order, effect on other on-going traffic (e.g., speech pre-emption), delay. A finite number of quality of service classes will be identified, and the one to apply to a message indicated.

With each transaction is associated a default quality of service, established at transaction establishment or by a subsequent modification request.

A transmission mode indication is present in reception indications. This gives information from the Access Stratum on the aspects of the transmission related to service quality of service (e.g., speech has been pre-empted).

NOTE: This covers circuit data transport, including cases where each message is very small (down to 1 bit or other information quantum). Obviously, in such cases these primitives are a model not to be followed in implementations.

6.2.2.3.3.1 Data Transfer Request, IF Side

Parameters

Local connection reference	local
Route	route
Transaction identification	local
Transaction management	enumerated (single, first, subsequent, last)
Quality of Service indication	QoS
Message	bit string

The transaction management field indicates if the message is independent from transactions (single), is the first of the transaction and hence initialises the transaction (first), is the last of the transaction and hence releases the transaction (last), or is in the middle of a transaction.

The primitive can be used with an empty message for transaction management alone (value 'single' is then meaningless).

6.2.2.3.3.2 Data Transfer Indication, UE Side

Parameters

Local connection reference	local
Route	route
Transaction identification	local
Transaction management	enumerated (single, first, subsequent, last)
Transmission mode indication	transmission mode
Message	bit string

6.2.2.3.3.3 Data Transfer Request, UE Side

Parameters

Local connection reference	local
Route	route
Transaction identification	local
Transaction management	enumerated (single, first, subsequent, last)
Quality of Service indication	QoS
Message	bit string

6.2.2.3.3.4 Data Transfer Indication, IF Side

Parameters

Local connection reference	local
Route	route
Transaction identification	local
Transaction management	enumerated (single, first, subsequent, last)
Transmission mode indication	transmission mode
Message	bit string

6.2.2.3.4 IF Side Initiated Radio Access Bearer Establishment

These operations allow the transfer of control messages for radio access bearer establishment between non-access strata elements on each side of the access interface. The operations pertain to the connection identified by the local connection reference parameter. The operations allow the IF side to initialise a radio access bearer. The operation also implies a request to the AS to allocate transmission resources to the radio access bearer.

A radio access bearer identification uniquely identifies the radio access bearer. It is used in all primitives that pertain to the radio access bearer. The radio access bearer identification has only local significance.

A NAS reference is provided in the radio access bearer establishment primitives. It contains application specific information, to be used by the remote NAS entity at the UE side. It may, for example, serve as the binding to a NAS call.

A quality of service request specifies the bearer characteristics that apply to the radio access bearer.

6.2.2.3.4.1 IF Side Initiated Radio Access Bearer Establishment Request, IF Side

Parameters

Local connection reference	local
Radio access bearer identification	local
NAS reference	bit string
Quality of Service request	QoS

6.2.2.3.4.2 IF Side Initiated Radio Access Bearer Establishment Indication, UE Side

Parameters

Local connection reference	local
Radio access bearer identification	local
NAS reference	bit string

6.2.2.3.4.3 IF Side Initiated Radio Access Bearer Establishment Response, UE Side

Parameters

Local connection reference	local
Radio access bearer identification	local
Status	enumerated (terminated by NAS, going on)

6.2.2.3.4.4 IF Side Initiated Radio Access Bearer Establishment Confirm, IF Side

Parameters

SDU Framing Mode: the Framing into SDUs used on the SAP by the sender should be respected at the other end at delivery

SDU order integrity: In SDU Framed mode, frame order must be preserved

Periodic/aperiodic SDUs: If Periodic is indicated, the delivery of SDUs from the sender has a fixed periodicity. Note that a SDU can be empty

SDU periodicity: This applies only if periodicity is used

SDU periodicity integrity: In the periodic mode, the delivery of SDUs to the recipient follows the same periodicity as the sender

Direction: bi-directional, uni-directional (down/up)

Support of SDU Time alignment: For periodic radio bearers, the sending of SDU at the SAP boundary can be time aligned by the AS in order to minimise delay

Peak Bit Rate: This is defined as the maximum bit rate allowed at the SAP boundary

Guaranteed Minimum Bit Rate: This is defined as the guaranteed bit rate allowed at the SAP boundary

NOTE:—The bit rate is calculated as the amount of information sent in the last SDU divided by the time between that last SDU sending and the next SDU sending.

Average Bit Rate: This is defined as the expected average bit rate for the remaining of the connection. This is used for applications with a commonly understood behaviour like speech

Guaranteed peak bit rate: yes/no

SDU Size Specification: This parameter determines the allowed SDU sizes (in for instance bits) to be used over the SAP. This can be used for instance in the case where coded speech is to be transferred.

Buffer/flow control: The details for that attribute are FFS.

Subjective Quality (FFS): This specifies the quality of the radio access bearer services as perceived by the end user. For example 2-4 levels of grading can be used. Applicable only with restricted radio access bearer services where absolute measures of bit error rate or delay do not measure the grade of service properly. These quality classes can be realised by, for example having different voice coders and/or by choosing different target values for speech frame error rate on the radio interface

Maximum SDU Loss Rate: This attribute is used for unrestricted radio access bearer and indicates what is the maximum rate of SDUs which are not delivered to the receiving entity or delivered with an indication that the data is erroneous.. This may be used to determine the appropriate coding and interleaving or ARQ mechanism

Maximum Residual SDU error rate: This attribute is used for unrestricted radio access bearer and indicates what is the maximum rate of SDUs which are delivered to the receiving entity as correct data although the data is erroneous

Maximum SDU Delay: This attribute defines the maximum allowed delay between the SAPs. A SDU that cannot be delivered within that delay is dropped by the Access Stratum. For periodic bearers, the delay may lead to a drop of the call. Within the access stratum the delay attribute may be used to set e.g. interleaving depth for the connection and/or the number of allowed re-transmissions

Allocation Priority: This is used when a radio access bearer needs to be established. The priority can be used during congestion to prioritise the radio access bearer service requests between current requests and already established RAB

Retention Priority: This is the priority of the RAB once it has been established. It is used to compare the priority of new incoming requests with already allocated resources and conditions the pre-emption of established resources

Traffic Handling Priority: This is used to differentiate between bearers in the access stratum, in particular for services which are delay tolerant and can be queued

Annex A (informative): Examples of Known Services Mapped on the Proposed Radio Access Bearer Service Attributes

The following tables below contain examples of how some known services can be mapped to radio access bearer attributes:

In the following tables, dynamic means that the attribute can be allocated on a per-SAP instance basis.

Table A.1: Examples of known services mapped on the proposed radio access bearer service attributes

Attribute	Speech (codec in non access stratum, e.g. GSM-FR)	Data, circuit, ISDN-B-channel (64 kbit/s)	GSM Transparent Data (9.6 kbit/s with GSM-IWF)
Type	unrestricted	unrestricted	unrestricted
SDU Framing Mode	yes	yes	yes
SDU order integrity	yes	yes	yes
Periodic/aperiodic SDUs	periodic	periodic	periodic
SDU periodicity	20ms	125µS	5ms
SDU periodicity integrity	yes	yes	yes
Direction	bi-directional	bi-directional	bi-directional
Support of SDU Time alignment	yes	no	no
Peak Bit Rate	13 kbits/s	64kbits/s	12kbits/s
Guaranteed Minimum Bit Rate	13 kbits/s	64kbits/s	12kbits/s
Average Bit Rate	6.5 kbits/s	64kbits/s	12kbits/s
Guaranteed peak bit rate	yes	yes	yes
SDU Size Specification	260	8	60
Buffer/flow control	no	no	no
Subjective Quality [ffs]	[ffs]	[ffs]	[ffs]
Maximum SDU Loss Rate	5%	10 ⁻⁶	NA
Maximum Residual SDU error rate	10 ⁻³	10 ⁻⁵	10 ⁻³
Maximum SDU Delay	40ms	100ms	100ms
Allocation Priority	dynamic e.g. medium	dynamic e.g. low	dynamic e.g. low
Retention Priority	dynamic e.g. medium	dynamic e.g. high	dynamic e.g. high
Traffic Handling Priority	NA	NA	NA

Table A-1: Examples of known services mapped on the proposed radio access bearer service attributes (continued)

Attribute	GSM Non-transparent Data	IP-packets, e.g. WWW browsing	IP-packets, e.g. real-time audio
Type	unrestricted	unrestricted	unrestricted
SDU Framing Mode	yes	yes	yes
SDU order integrity	yes	NA	yes
Periodic/aperiodic SDUs	periodic	NA	aperiodic
SDU periodicity	20ms	NA	NA
SDU periodicity integrity	yes	NA	NA
Direction	bi-directionnal	uni-directionnal	bi-directionnal
Support of SDU Time alignment	no	NA	NA
Peak Bit Rate	12kbits/s	2Mbits/s	2Mbit/s
Guaranteed Minimum Bit Rate	12kbits/s	0	8-kbits/s
Average Bit Rate	12kbits/s	NA	4-kbits/s
Guaranteed peak bit rate	yes	no	no
SDU Size Specification	244	2Ke	1Ke
Subjective Quality [ffs]	[ffs]	[ffs]	[ffs]
Buffer/flow control	no	TBD	TBD
Maximum SDU Loss Rate	NA	10 ⁻³	5%
Maximum Residual SDU error rate	10e-4	10e-9	10e-6
Maximum SDU Delay	100ms	30s	80ms
Allocation Priority	dynamic e.g. low	NA	dynamic e.g. medium
Retention Priority	dynamic e.g. high	NA	dynamic e.g. medium
Traffic Handling Priority	NA	dynamic e.g. medium	NA

History

Document history		
0.0.0	04.04.97	Initial Draft; preliminarily indicated as 23.yy
0.1.0	19.05.97	Second Draft; major improvements in clause 4.2
0.1.1	12.06.97	Revised version according to <ul style="list-style-type: none"> - decisions during the meeting 20-22.05.97, Sophia Antipolis - ETSI drafting rules, renamed as "23.10"
0.2.0	07.07.97	Revised version according to decisions during the meeting 30.06.-04.07.97, Sophia Antipolis. Major improvements in clause 5.
0.2.1	28.08.97	Revised version according to decisions during the meeting 30.06.-04.07.97, Sophia Antipolis. Some changes in clause 5.
0.3.0	22.09.97	Renumbered due to ETSI Drafting Rules, no changes since 0.2.1
0.3.1	12.11.97	Some editorial changes, in particular adding notes to invite contributions in order to align "older parts" of the document and "scope"
0.4.0	08.01.98	Revised version according to decisions during the meeting 17.-21.11.97, Kista: <ul style="list-style-type: none"> - adoption of document incl. title to the scope - improvements in clauses 4, 4.3.6 and 5.2.2.2.
0.5.0	23.01.98	Revised version according to decisions during the meeting 19.-21.01.98, Malmö: <ul style="list-style-type: none"> - figure 1 in clause 5.1 added
0.6.0	1998-04	Revised version according to decisions during the meeting 23.-27.03.98, Bad Aibling: <ul style="list-style-type: none"> - chapter 4 restructured (=> new chapter 5) - table on functions in-/outside Access stratum revised - some improvements in new chapter 5.6
0.6.1	1998-06	No changes since 0.6.0 but deletion of revision marks and reformatting to paper size "LETTER" instead of "A4"
0.7.0	1998-08	Revisions as agreed on TD 98s357 in June meeting (Chicago). NOTE: Other agreed revisions could not be inserted as the relevant documents were not electronically available (TDocs 466, 467, 469, 476)
0.7.1	1998-08	Editorial changes: <ul style="list-style-type: none"> - Some information from X.210 added. - some further textual alignment to the current state of 23.01
0.8.0	1998-08	Revisions as agreed in August meeting (Sophia Antipolis). NOTE: Revisions according to TDocs 466, 467, 469, 476 are integrated also.
0.8.1	1998-09	Editorial alignment due to rapporteur's notes on revisions as provided by TD 98s654 and additional text alignment.
1.0.0	1998-09	Version 1.0.0 for presentation for information to SMG#27
1.0.1 draft	1998-11	Editorial updates from ver. 0.8.0 to ver. 0.8.1, and text alignments. Addition of primitives, sections 6.2.2.3.4 and 6.2.2.3.5, for Control messages (Dedicated Control SAP) - RAB control procedures, Tdoc 98S720 (Rome).

1.0.1	1998-12	Addition of editorial comments from November (Castle Combe) meeting.
1.1.0	1999-01	Replacement of previous Section 5.14, Terminal Positioning, by new Section: UE Location Identification. With two enumerated bullet items, as agreed in the San Francisco meeting.
1.2.0	1999-02	Addition of third enumerated item into section 5.14. In same section, an editor's note was inserted, regarding the need of primitives and operations, when the location services item is finalized. Title of section 5.4, replaced from 'MS Tracking' to 'Location Management'. In Table 1, replacement of 'UE positioning' to 'UE location identification' and 'UE Tracking' to 'UE location management'. Remove superfluous editor's notes throughout the specification.
2.0.0	1999-02	Update in revision numbering for presentation to SMG#28 and provision to 3GPP for their baseline documentation.
3.0.0	1999-02	Approved at SMG#28. Document for Transfer to TSG-SA
3.1.0	1999-03	Addition of background information on UE location identification to section 5.14. Addition of primitives related to UE location information, sections 6.2.3.1.6-7: UE location information request and confirm, respectively. Both updates approved in S2#3, Nynaeshamn. Update related to transcoder location at the core network and source depending coding belonging to the non-access stratum. Updates agreed in Ad hoc in February in Paris and approved in S2#3. Table 1, editorial section 5.12, section 6.3.5, QoS, and Table A.1 - speech codec in access stratum.
3.2.0	1999-11	Inclusion of CR 002 (editorial) and CR003 (removal of the QoS parameters) as agreed by TSG SA#5.