

February 25th – February 28th, 2002

Bristol, UK

Agenda Item: 7.3
Source: Ericsson
Title: On NW initiated re-authentications
Document for: Discussion and decision

1. Scope and objectives

This contribution proposes a new structure to present requirements and the actual stage 2 flows for NW initiated re-authentications.

2 Background

In current version of TS 33.203 we can find requirements for NW initiated re-authentications in chapter 5.1.2. This chapter is also providing some information on stage 2 flows outlining the procedure.

This contribution proposes to move this information into a new section under chapter 6 instead. Also the stage 2 flows are refined in order to show in a more accurate way how the procedure should look like.

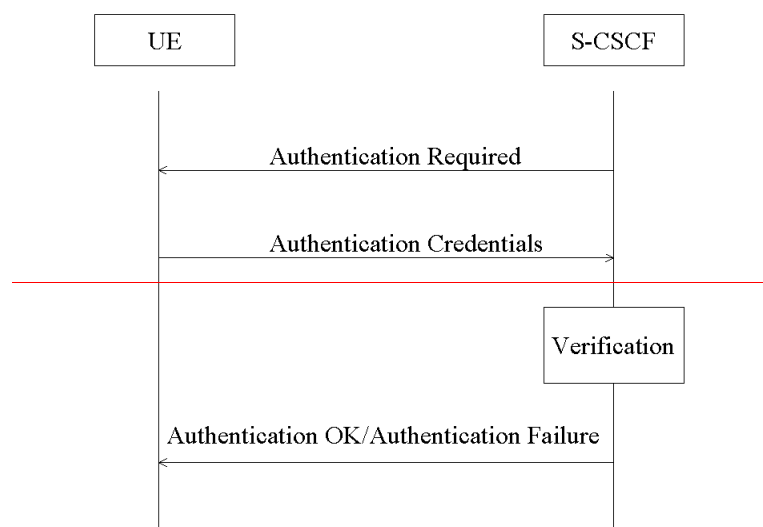
3 Proposed Changes to 33.203

5.1.2 Re-Authentication of the subscriber

Initial registration shall always be authenticated. It is the policy of the operator that decides when to trigger a re-authentication by the S-CSCF. Hence a re-registration might not need to be authenticated.

Note: A SIP REGISTER message, which has not been protected at the first hop, shall be considered as initial registration.

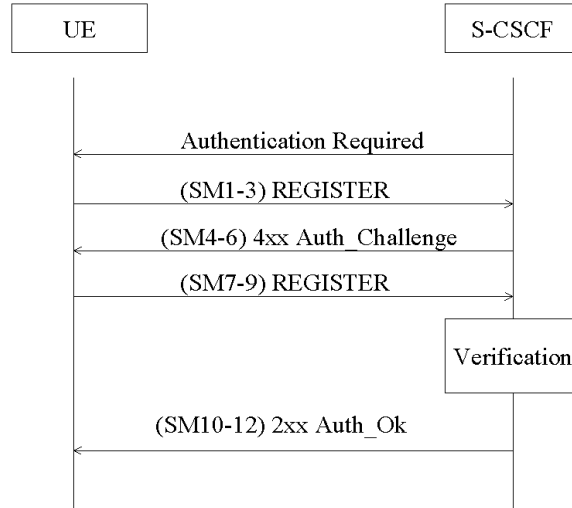
The S-CSCF shall also be able to initiate an authenticated re-registration of a user at any time, independent of previous registrations, ~~see figure below which defines this requirement.~~



[Editors Note: Solutions for the initiation of network initiated authenticated re-registration shall be elaborated by CN1. The stage 2 information flows shall be included in this specification.]

6.1.4 Network Initiated re-authentications

In order to be able to initiate an authenticated re-registration of an already registered user, the S-CSCF shall send a request to the UE to initiate a re-registration procedure. When received at the S-CSCF, the re-registration shall trigger a new IMS AKA procedure that will allow the S-CSCF to re-authenticate the user.



In the event that the UE does not initiate the re-registration procedure after the request from the S-CSCF, the S-CSCF may decide to de-register the subscriber.