

SA WG2 Meeting #106

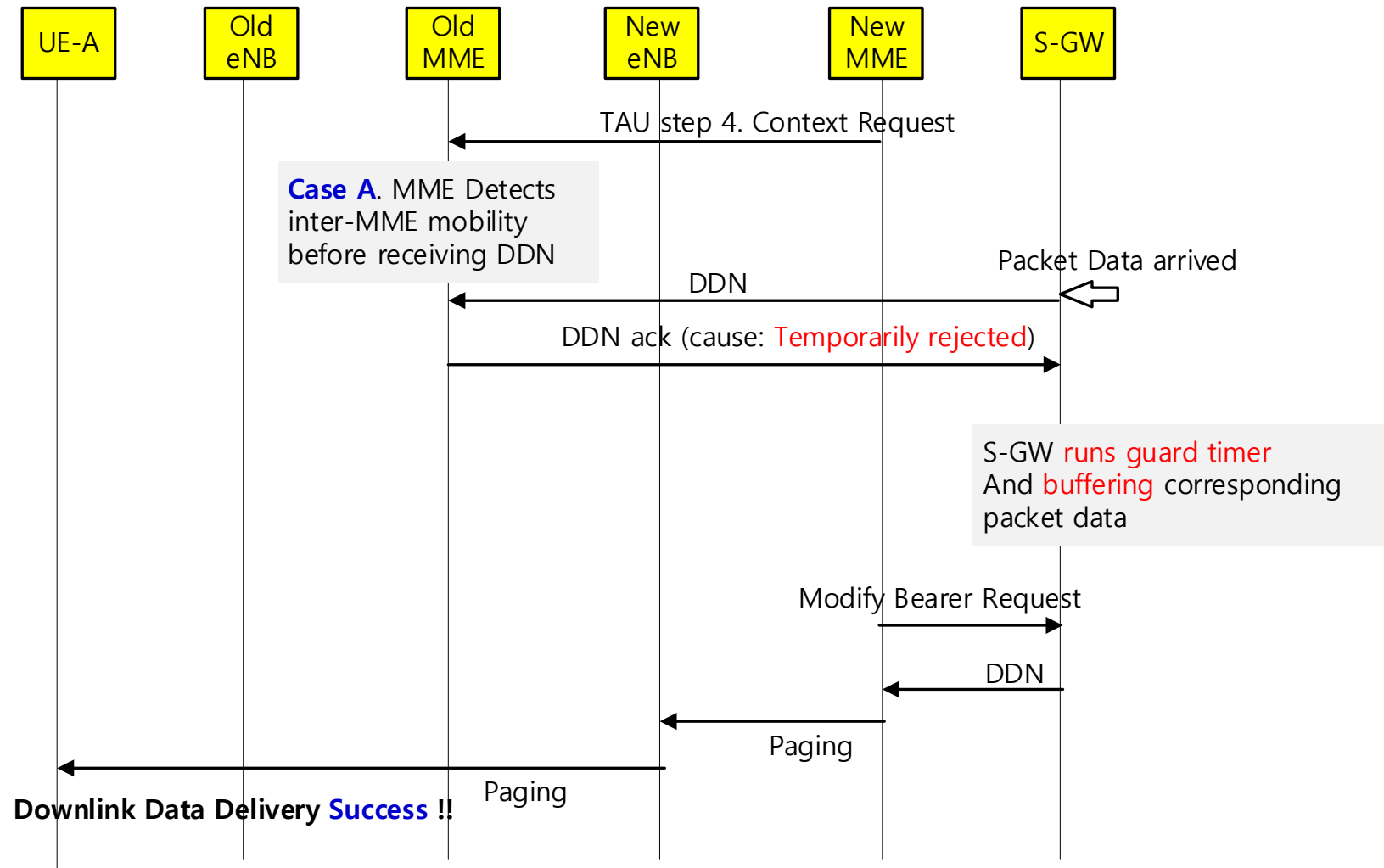
17 - 21 November 2014, San Francisco, California, USA

S2-144077

**Necessity of further clarification
for downlink packet delivery failure
due to inter-MME/SGSN mobility**

LG Electronics, LG Uplus

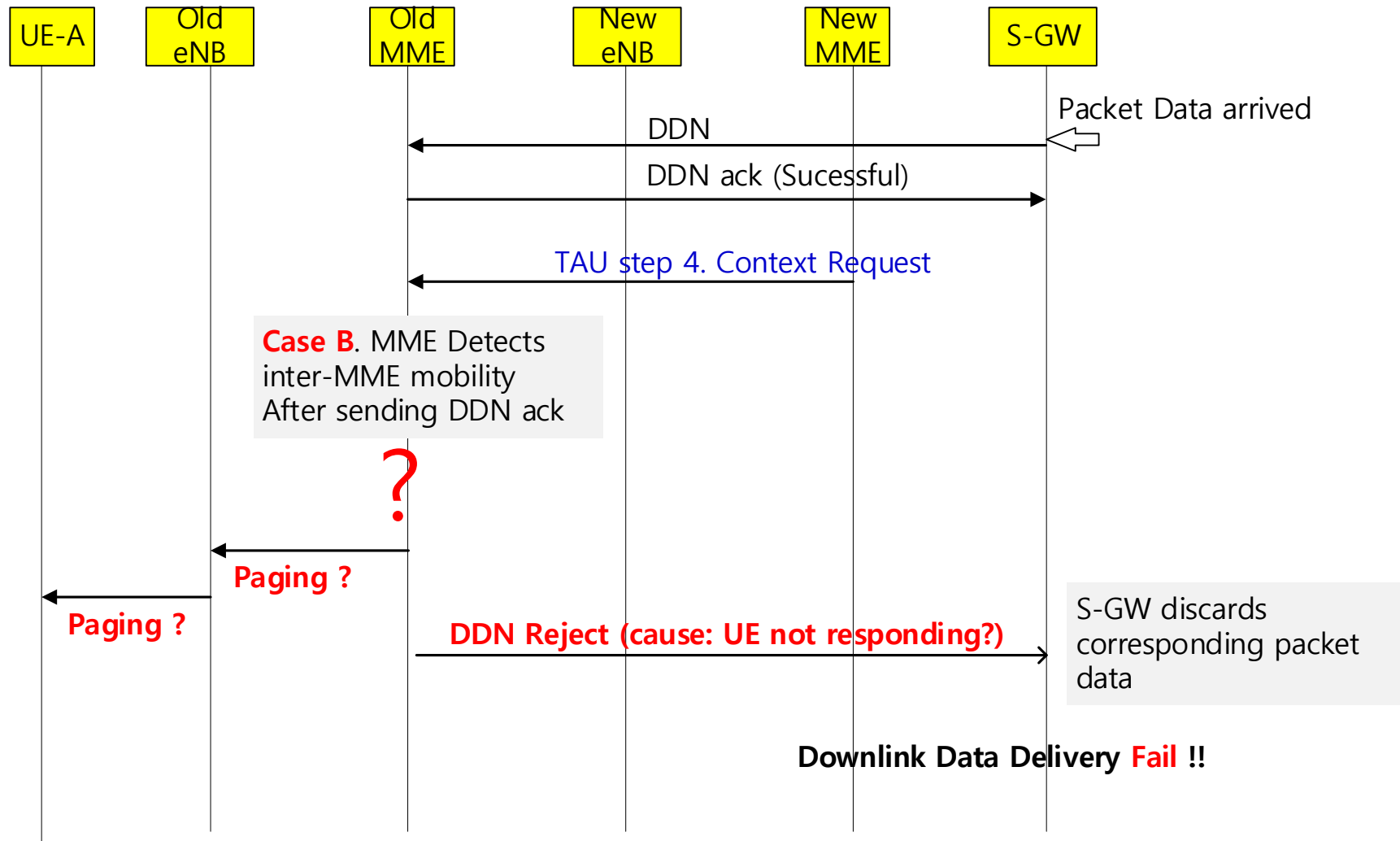
Rel-11 CR 2620



Case A (MME detects inter-MME mobility before receiving DDN)

is solved by Rel-11 clarification (CR 2620, 2621 for TS 23.401)

Problematic Scenario



In Case B (MME detects inter-MME mobility after receiving DDN), there is still possibility of **downlink data delivery failure** if inter-MME/SGSN is in progress (bad user experience especially for voice service)

Proposal

