

SA2#106, San Francisco
17-21 November 2014

S2-143967

ProSe Group Priority way forward

Source: Qualcomm Inc.

Outline

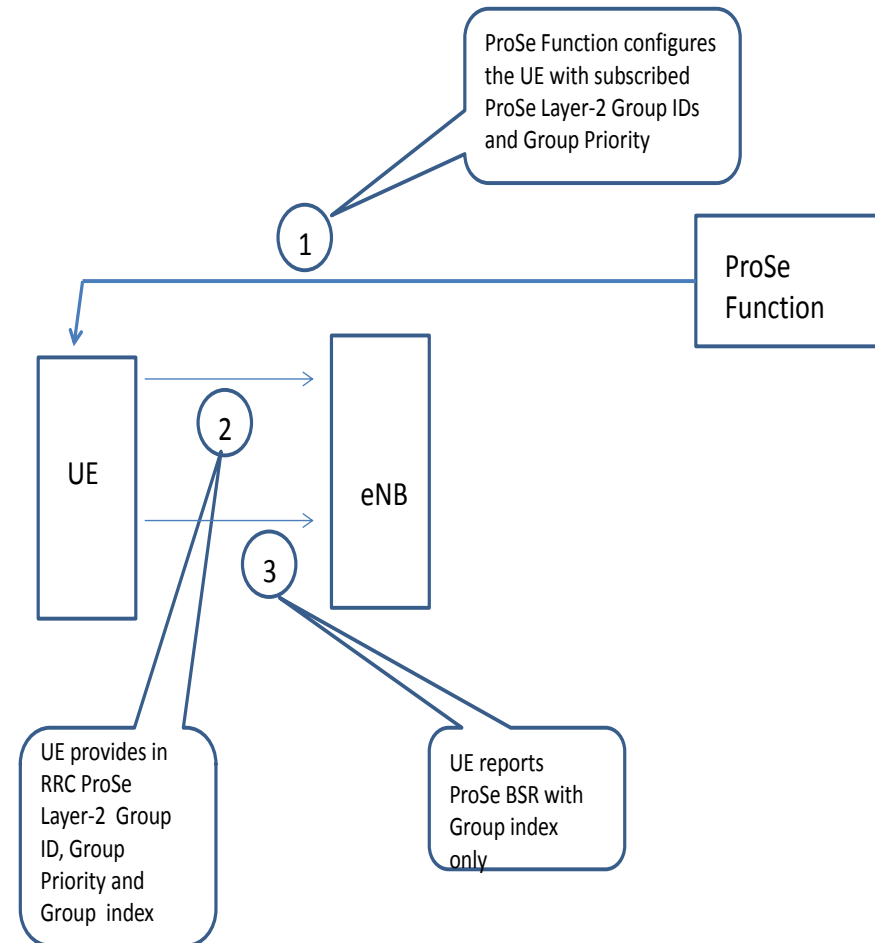
- Status on Group Priority
- System options for support of Group Priority
- Way forward

Status of ProSe Group Priority

- TS 23.303 indicates that Group Priority should be supported but there is no associate procedure
- Some proposals were discussed in SA2#104 without conclusion
- LS from RAN2 (S2-143424) was not handled in SA2#105 due to lack of time

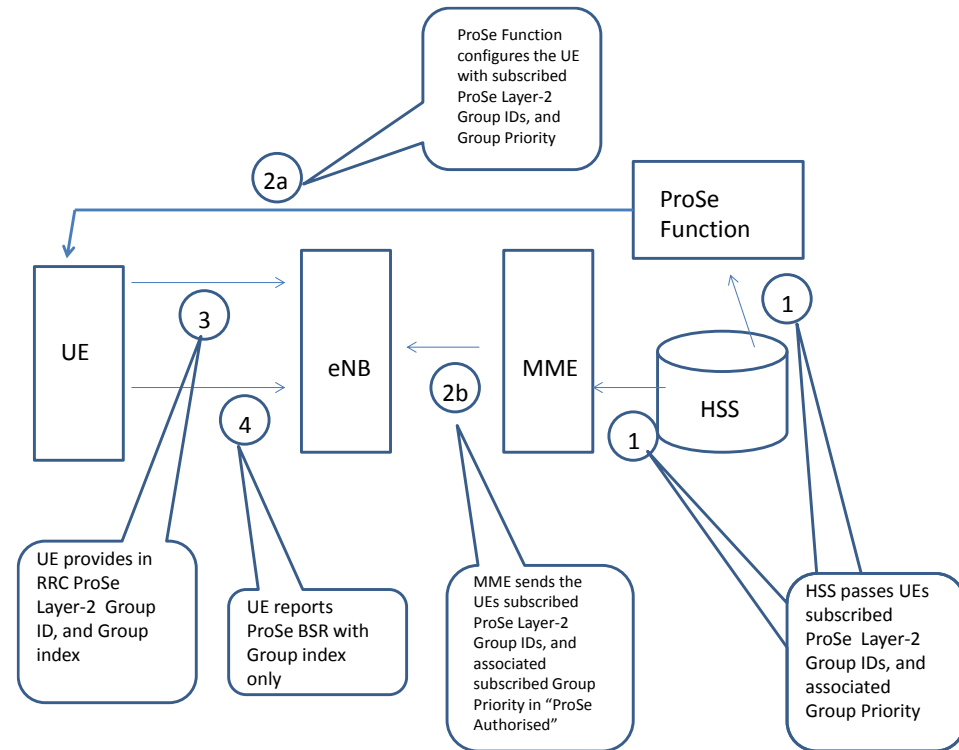
Option 1: Only UE provisioned and signalled subscribed Group Priority

- ProSe Function
 - Provisions the UE with ProSe Layer-2 Group ID(s) and associated subscribed Group Priorit(ies)
- UE
 - UE generates Group Indices for the “active” groups
 - Signals ProSe Layer-2 Group ID(s), Group Indices and associated subscribed Group Priorit(ies) in RRC
 - UE selects ProSe resource pool based on Group priority in mode 2
 - UE reports ProSe BSR using only Group Indices
- eNB
 - Takes into account the Group Priority when scheduling radio resources in mode 1
- Impacted WGs: SA2, CT1, CT6, RAN2



Option 2: UE provisioned and signalled Group Priority, MME/HSS signalled subscribed Group Priority

- ProSe Function
 - Provisions the UE with ProSe Layer-2 Group ID(s) and associated subscribed Group Priorit(ies)
- UE
 - UE generates Group Indices for the “active” groups
 - Signals ProSe Layer-2 Group ID(s), and Group Indices in RRC
 - UE selects ProSe resource pool based on Group priority in mode 2
 - UE reports ProSe BSR using only Group Indices
- HSS
 - Stores ProSe Layer-2 Group ID (s) and subscribed Group Priorities
- MME
 - Provides the ProSe Layer-2 Group ID (s) and subscribed Group Priorities in “ProSe Authorised” to eNB
- eNB
 - Takes into account the UE signalled Group Priority and the MME/HSS provided subscribed Group Priority when scheduling radio resources in mode 1
- Impacted WGs: SA2, CT1, CT4, CT6, RAN2, RAN3



Comparison

- Option 2 is complementary to option 1
- Option 1 and 2 can work for both mode 1 and mode 2
- Option 2 presents more control since the “subscribed Group Priority” is provided from CN (on S1-AP)
- Option 2 has system wide impacts
- Both options can be “upgraded” in rel.13 to also support “situational” priority as MCPTT requirements (TS 22.179)

Way forward

- Agree with option 2
 - See attached CR
- Answer RAN2 LS as follows:
 - Whether a ProSe Layer-2 group ID can be associated with priority level?
 - [SA2 answer]: Yes. See attached CRs
 - If there is an associated group priority for each ProSe Layer-2 group ID:
 - Can the ProSe function provide the UE with this information?
 - [SA2 answer]: Yes see attached CR.
 - What is the number of group priority levels that will be supported?
 - [SA2 answer]: SA2 believes that 3 or 4 priority levels will be suitable. SA2 also includes SA1 in the LS response in order to verify whether this number of priority level is adequate from service requirements perspective.