

# Status Report from CN#26

**Stephen Hayes**  
**Chair TSG-CN**  
**stephen.hayes@ericsson.com**  
**+1 469 360 8500**

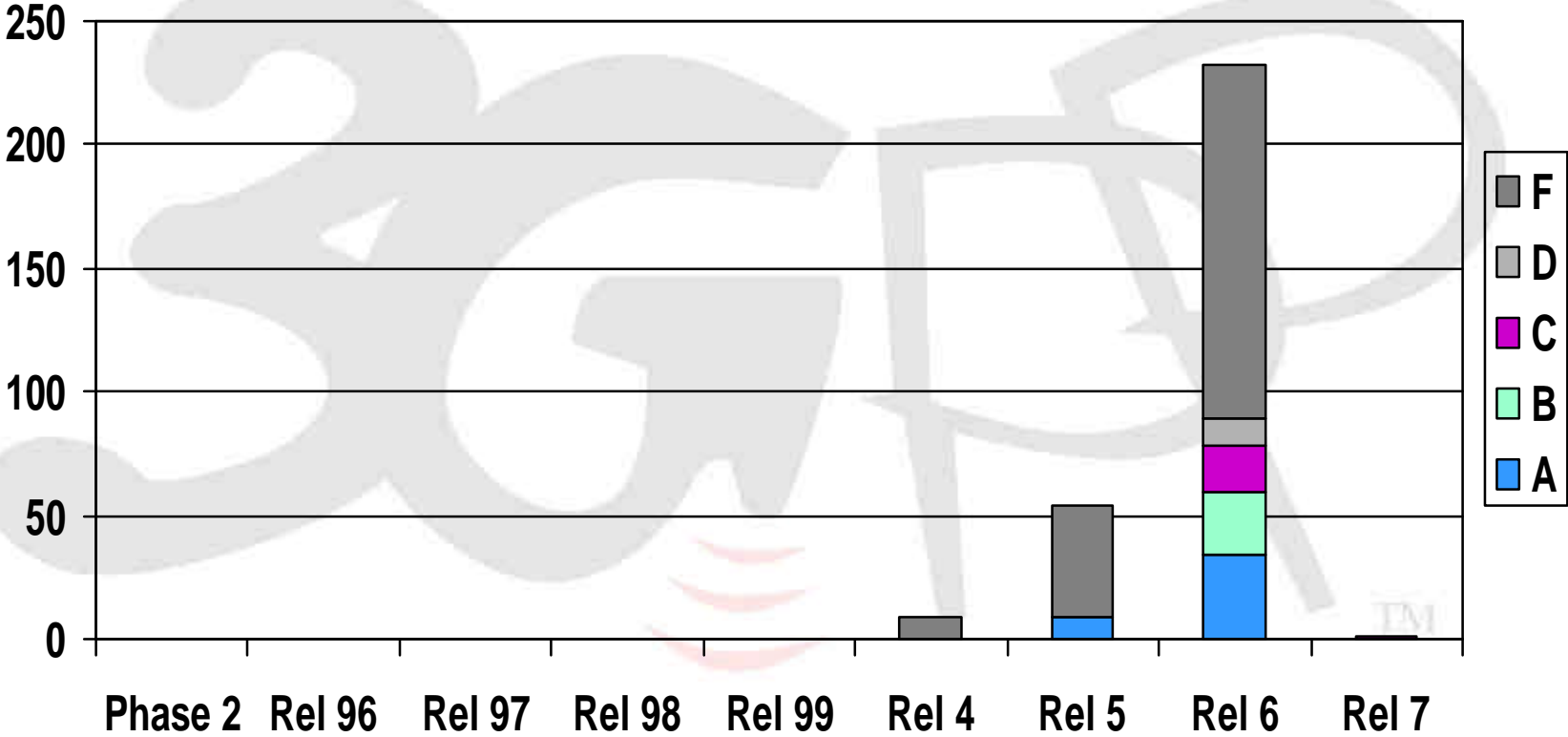
A GLOBAL INITIATIVE

## Topics for CN Presentation to SA

- **CR Statistics**
- **Release 5 (and earlier) Status Overview**
- **Release 6 Status Overview**
- **Release 7 Status Overview**
- **2005 CN Meeting Schedule**
- **CN Organizational Structure**

A GLOBAL INITIATIVE

# CN#26 CR Statistics



A GLOBAL INITIATIVE

# Release 5 (and earlier) Status Overview

- **Very few pre-Rel 5 CRs**
  - Cleanup of PS SS procedures (error introduced in earlier CR)
  - Correction of OSA ambiguities found during plugtests
- **Rel 5 CRs**
  - IMS Corrections
  - Go Interface Corrections
  - Cx/Dx/Sh Corrections
  - CAMEL Corrections
  - OoBTC/TrFO Corrections
  - Use of H.248 Version 1 Clarification for Mc

A GLOBAL INITIATIVE

# Release 6 Status Overview

- **Overall status**
  - Good progress
  - Many dependencies on IETF
  - Unclear on status of OMA dependencies (Le, Lr, Lpp)
  - Awaiting responses from SA1, SA2, SA5. Some alignment may be needed depending on responses
  - See attachment for more detailed status on CN Rel 6 progress
- **Delayed until March**
  - Flow Based Charging (Rx interface not complete)
  - IMS Phase 2 (Conferencing, Messaging, IMS MO not complete)
  - OSA 3 (Completion of stage 2)
  - Presence (IETF Dependencies, Pk interface)
  - TEI (Domain Specific Access Class Barring not complete)
  - Subscriber & Equipment Trace (SA5 discussions ongoing)
  - WLAN Interworking (Mechanism for manual PLMN selection)

# Release 6 Status Overview

## (New or Revised WIDs)

| Title                                    | Change  | WG  | NP doc    |
|--|---|-----|-----------|
| Presence WID                             | Removal of OSA work   | CN1 | NP-040492 |
| MBMS WID                                 | Update list of affected specs. Work completed.                              | CN1 | NP-040493 |
| IP Multimedia Core Network Subsystem 2   | Removal of IMS emergency calls, local services, addition of IMS mgmt object | CN1 | NP-040494 |
| Trace Management, stage3, network        | Removed IMS trace. Added trace over Gs. Dates slipped to CN#27.             | CN4 | NP-040549 |
| Reorganization of CS data specifications | Conversion of TR 23.910 to TS. Work completed.                              | CN3 | NP-040563 |
| CN parts of GUP*                         | Need CN WID for GUP. Removal of MMI aspects. Dates slipped to CN#27.        | CN4 | NP-040612 |

\*CN Aspects need no longer be tracked in SA1 WID

# Release 6 Status Overview

(Specs approved at CN#26)



| Spec.     | Title  | WG  |
|-----------|--|-----|
| TR 23.941 | 3GPP Generic User Profile (GUP); Data Description Method (DDM)             | CN4 |
| TS 29.210 | Charging rule provisioning over Gx interface                               | CN3 |
| TS 29.162 | Interworking between the IM CN subsystem and IP networks                   | CN3 |
| TS 23.202 | Circuit switched data bearer services                                      | CN3 |
| TS 24.247 | Messaging service using the IP Multimedia (IM) Core Network (CN) subsystem | CN1 |

A GLOBAL INITIATIVE

# Release 7 Status Overview

## (New and Revised WIDs)

| Title  | Change   | WG  | NP doc    |
|--|--|-----|-----------|
| CAMEL Trunk Originated Trigger Detection Points                      | ADD trigger detection points for trunk originated calls at MSC | CN4 | NP-040550 |
| Emergency Call Enhancements for IP& PS Based Calls – stage 3         | IMS & PS Emergency calls                                       | CN1 | NP-040608 |
| IP Multimedia Core Network Subsystem - IMS Stage3 Protocol Evolution | Protocol evolution and IMS TEI. (NOT IMS phase 3)              | CN1 | NP-040617 |
| Protocol impact from providing IMS services via fixed broadband      | Provided more details on anticipated work                      | CN1 | NP-040618 |
| Trace Management, stage3, IMS*                                       | IMS Trace. No Feature level WID yet.                           | CN1 | NP-040621 |

\*No R7 Feature Level WID exists

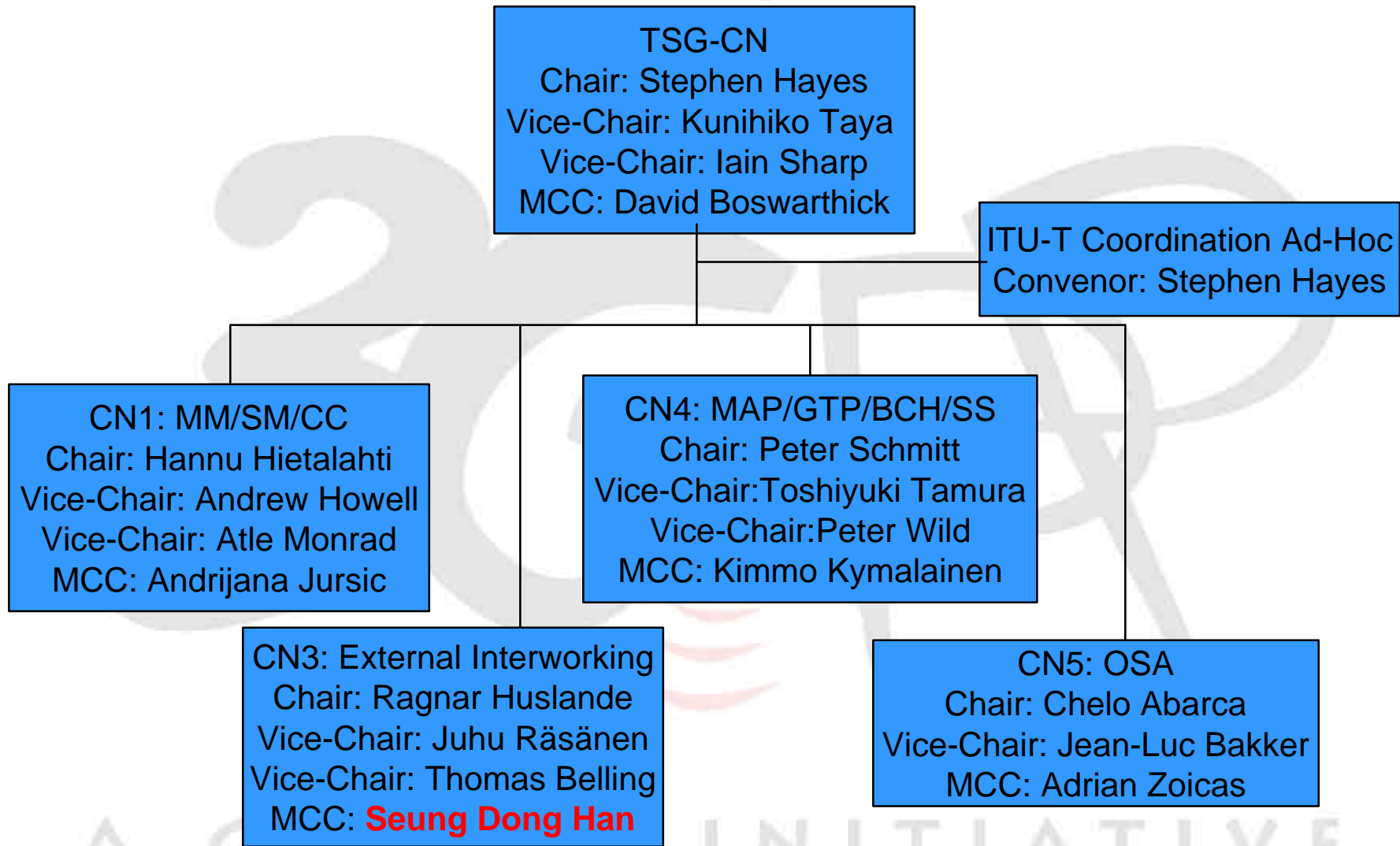


# CN/CT 2005 Schedule

| Meeting       | Date                | Place              | Host                  |
|---------------|---------------------|--------------------|-----------------------|
| CN1, CN3, CN4 | Feb 14-18, 2005     | Sydney, Australia  | JP Friends + Vodafone |
| CN#27         | Mar 9-11, 2005      | Tokyo, Japan       | JP Friends            |
| CN WGs        | Apr 25-29, 2005     | Cancun, Mexico     | NA Friends            |
| CT#28         | Jun 1-3, 2005       | Tbd, North America | NA Friends            |
| Some CT WGs   | Aug 29-Sept 2, 2005 | Tbd, EU            | EF3                   |
| CTN#29        | Sept 21-23, 2005    | Tallinn, EU        | EF3                   |
| Some CT WGs   | Oct 31-Nov 4, 2005  | Tbd, EU            | EF3                   |
| CT#30         | Nov 30-Dec 2, 2005  | Malta, EU          | EF3                   |

A GLOBAL INITIATIVE

# CN Leadership Structure



Note: WG election delayed until after March TSG elections

TSG-SA#26, Dec. 13-16, 2004

**Title:** CN WI Status and Exception Request

**Work Item:** -

**Source:** CN Chairman

**To:** SA

## 1. CN WI Status

The status of the CN work items is given as of CN#26 using the color code below:

|                                       |  |   |
|---------------------------------------|--|---|
| Functionality complete as of Dec 2004 | Functionality expected to complete by March 2005 | Functionality expected to complete after March 2005 |
|---------------------------------------|--|---|

Since CN#25, CN has completed 12 subitems (rows in this table).

| Work Item   | Functionality                                | WG  | % Done | Completion Date | Open Items  |
|---|--|-----|--------|-----------------|---|
| Camel 4 Prepay Support for SCUDIF   | Camel 4 Prepay Support for SCUDIF            | CN4 | 100%   | 2004-03         | None  |
| Enhanced Dialed Services  | Enhanced Dialed Services                     | CN4 | 100%   | 2004-03         | None  |
| Flow Based Charging   | Gx interface                                 | CN3 | 100%   | 2004-12         | None  |
|   | Rx interface                                 | CN3 | 65%    | 2005-03         | Protocol development for Rx based on reuse of Gq  |
| Gq Dynamic Policy Control   | End-to-end QoS, Gq interface                 | CN3 | 100%   | 2004-12         | None  |
| GUP Stage 3   | GUP  | CN4 | 50%    | 2005-03         | Security details, GUP profile schema structure, SOAP bindings, clarification of components, GCL, metadata, DST usage, etc. Need WSDL definitions and XML schema definitions |
| IMS Phase 2 - Stage 3   | IETF Alignment                               | CN1 | 100%   | 2004-09         | None  |
|   | Cx, Dx, and Sh interfaces                    | CN4 | 100%   | 2004-09         | None  |
|   | Extensions to SIP                            | CN1 | 99%    | 2004-09         | Need to register orig-parameter with IANA   |
|   | Conferencing                                 | CN1 | 90%    | 2005-03         | Conference package (IETF), CPCP (IETF), Floor control (IETF). CPCP and Floor control may be removed if WGLC not completed by next CN1 meeting.                              |
|   | Group Management                             | CN1 | 100%   | 2004-12         | Treated as part of the other items using GM   |
|   | Messaging                                    | CN1 | 85%    | 2005-03         | Listsrv Requirement, Iscomposing Requirement, MSRP (IETF)   |
|   | IMS Device Management                        | CN1 | 79%    | 2005-03         | None. New spec so needs time for review.  |
| Interop & Commonality between IMSs using different IP-connectivity networks - Stage 3 | IMS interoperability                         | CN1 | 100%   | 2003-12         | None  |
| Interworking IMS<->CS   | Interworking between the IMS and CS Networks | CN3 | 100%   | 2004-09         | None  |
| Interworking IMS<->IP   | Interworking towards IPv4 (SIP aspects)      | CN1 | 100%   | 2004-09         | None  |
|   | Interworking towards non-IMS SIP             | CN1 | 100%   | 2004-09         | None  |
|   | Refinement of IPv4/IPv6 interworking         | CN3 | 100%   | 2004-12         | None  |
| MBMS Stage 3  | MBMS   | CN4 | 100%   | 2004-12         | None  |
|   | MBMS   | CN1 | 100%   | 2004-12         | None  |

| Work Item                                | Functionality                        | WG  | % Done | Completion Date | Open Items  |
|--|--------------------------------------|-----|--------|-----------------|---|
|  | MBMS Gmb interface                   | CN3 | 100%   | 2004-12         | None  |
| MGCF-IM MGW I/F (Mn)                     | Mn interface                         | CN3 | 100%   | 2004-09         | None  |
|  | Mn interface                         | CN4 | 100%   | 2004-12         | None  |
| Network Sharing                          | Network Sharing                      | CN1 | 100%   | 2004-12         | None  |
| OSA 3                                    | OSA improvements for Rel 6           | CN5 | 98%    | 2005-03         | Completion of 23.198 (OSA stage 2)  |
| Presence Stage 3                         | Presence                             | CN1 | 95%    | 2005-03         | CN Part completed. Many outstanding IETF dependencies   |
|  | Pk interface                         | CN3 | 0%     | 2005-03         | Will be removed if not complete by 2005-03.   |
| Support of Subscriber Certificates (GAA) | Subscriber Certificates              | CN4 | 100%   | 2004-12         | Some error handling cleanup may be required   |
|  | Subscriber Certificates              | CN1 | 99%    | 2004-12         | None. Some alignment with other specs may still be required.  |
| TEI-6                                    | Radius at GGSN                       | CN3 | 100%   | 2004-12         | None  |
|  | Domain specific access class barring | CN1 | 2%     | 2005-03         | Nothing done yet. Awaiting SA2 requirements clarificationsMM procedures for ACBOP, GMM procedures for ACBOP   |
|  | TCAP Handshake to prevent SMS fraud  | CN4 | 100%   | 2004-12         | None. Need guidance from SA3 on need for further work on MapSec   |
| Trace Management                         | Subscriber and equipment trace       | CN4 | 50%    | 2004-12         | Requirements questions sent to SA5  |
| WLAN Interworking - Stage 3              | WLAN scenario 2                      | CN1 | 99%    | 2004-12         | Method for manual PLMN selection  |
|  | Wi description                       | CN3 | 100%   | 2004-09         | None  |
|  | WLAN CN interfaces                   | CN4 | 99%    | 2004-12         | IETF dependencies, Method for manual PLMN selection. Changes may be needed depending on responses to outstanding questions outstanding to SA2/SA3/SA5 |
|  | WLAN scenario 3                      | CN1 | 95%    | 2005-03         | Removal of PDG redirection and subsequent tunnel setup procedures   |