
Source: SA5 (Telecom Management)
Title: 2 Rel-6 CR 32.311/2 Generic IRP management; Requirements / IS
Document for: Approval
Agenda Item: 7.5.3

Doc1stLevel	Specific a	CR	R	Phase	Subject	Ca	VersCu	Doc2ndLev	Workitemsl D
SP-040794	32.311	003	--	Rel-6	Correct ambiguities in using IRPVersion, Add reference to its CORBA/CMIP SSs	F	6.0.0	S5- 047131	OAM-NIM
SP-040794	32.312	003	--	Rel-6	Update UML diagrams, Add reference to its CORBA/CMIP SSs	F	6.0.0	S5-047135	OAM-NIM

CHANGE REQUEST

⌘ **32.311 CR 003** ⌘ rev - ⌘ Current version: **6.0.0** ⌘

For **HELP** on using this form, see bottom of this page or look at the pop-up text over the ⌘ symbols.

Proposed change affects: | UICC apps ME Radio Access Network Core Network

Title:	⌘ Correct ambiguities in using IRPVersion, Add reference to its CORBA/CMIP SSs		
Source:	⌘ SA5 (edwin.tse@ericsson.com)		
Work item code:	⌘ OAM-NIM	Date:	⌘ 19/11/2004
Category:	⌘ F	Release:	⌘ Rel-6
	Use <u>one</u> of the following categories: F (correction) A (corresponds to a correction in an earlier release) B (addition of feature), C (functional modification of feature) D (editorial modification) Detailed explanations of the above categories can be found in 3GPP TR 21.900 .		Use <u>one</u> of the following releases: 2 (GSM Phase 2) R96 (Release 1996) R97 (Release 1997) R98 (Release 1998) R99 (Release 1999) Rel-4 (Release 4) Rel-5 (Release 5) Rel-6 (Release 6)

Reason for change:	⌘ Because a new SS 32.313 is proposed, we need a reference in this TS to refer to it. Disambiguate some statements related to use of IRPVersion.
Summary of change:	⌘ Add the reference to the SS specification.
Consequences if not approved:	⌘ The reference list specified in Generic IRP Management Requirement is incomplete. Usage of IRPVersion is ambiguous.

Clauses affected:	⌘ Clause "Introduction", 4.1						
Other specs affected:	<table border="1" style="display: inline-table; border-collapse: collapse;"> <tr> <td style="width: 20px; text-align: center;">Y</td> <td style="width: 20px; text-align: center;">N</td> </tr> <tr> <td style="text-align: center;"><input type="checkbox"/></td> <td style="text-align: center;"><input checked="" type="checkbox"/></td> </tr> </table> Other core specifications	Y	N	<input type="checkbox"/>	<input checked="" type="checkbox"/>	⌘	
Y	N						
<input type="checkbox"/>	<input checked="" type="checkbox"/>						
	<table border="1" style="display: inline-table; border-collapse: collapse;"> <tr> <td style="width: 20px; text-align: center;">Y</td> <td style="width: 20px; text-align: center;">N</td> </tr> <tr> <td style="text-align: center;"><input type="checkbox"/></td> <td style="text-align: center;"><input checked="" type="checkbox"/></td> </tr> </table> Test specifications	Y	N	<input type="checkbox"/>	<input checked="" type="checkbox"/>	⌘	
Y	N						
<input type="checkbox"/>	<input checked="" type="checkbox"/>						
	<table border="1" style="display: inline-table; border-collapse: collapse;"> <tr> <td style="width: 20px; text-align: center;">Y</td> <td style="width: 20px; text-align: center;">N</td> </tr> <tr> <td style="text-align: center;"><input type="checkbox"/></td> <td style="text-align: center;"><input checked="" type="checkbox"/></td> </tr> </table> O&M Specifications	Y	N	<input type="checkbox"/>	<input checked="" type="checkbox"/>	⌘	
Y	N						
<input type="checkbox"/>	<input checked="" type="checkbox"/>						
Other comments:	⌘						

Change in Clause "Introduction"

Introduction

The present document is part of the 32.300-series covering the 3rd Generation Partnership Project: Technical Specification Group Services and System Aspects; Telecommunication management; as identified below:

- 32.311:** "Generic Integration Reference Point (IRP) management; Requirements";
- 32.312: "Generic Integration Reference Point (IRP) management; Information Service (IS)";
- 32.313: "Generic Integration Reference Point (IRP) management; Common Object Request Broker Architecture (CORBA) Solution Set (SS)";
- 32.314: "Generic Integration Reference Point (IRP) management; Common Management Information Protocol (CMIP) Solution Set (SS)";

The Itf-N interface is built up by a number of Integration Reference Points (IRPs) and a related Name Convention, which realise the functional capabilities over this interface. The basic structure of the IRPs is defined in 3GPP TS 32.101 [1] and 3GPP TS 32.102 [2].

The IRPs support a set of common services. Those features allow to retrieve IRP profile and IRP supported versions. The present document contains the requirements of those common services.

End of change in Clause "Introduction"

Change in Clause 4.1

4.1 Versions retrieval function

An IRP Agent may support one or multiple IRP instances simultaneously (e.g. AlarmIRP instances, BulkCMIRP instances, etc.).

The set of capabilities of eEach IRP instance supported by an IRP Agent is fully identified by the version number of the corresponding IRP specification (i.e. the "IRP document version number string" or in short, the IRPVersion; see subclause 3.1.).

An IRP Agent can simultaneously support several versions of the same IRP. An An IRP Agent instance shall provide over Itf-N a function to allow IRP Manager to that is capable of retrieving all its (i.e. IRP instance's) supported its the IRPVersion(s) (i.e. IRP document version number string(s)) of an IRP currently supported by IRP Agent. over Itf-N.

An IRP Manager may shall then be able to decide if it wants to communicate with the IRP instance, which IRPVersion it is going to talk to. The IRP document version number string format is defined in clause 3.1 of the present document.

End of change in Clause 4.1

CHANGE REQUEST

⌘ **32.312 CR 003** ⌘ rev - ⌘ Current version: **6.0.0** ⌘

For **HELP** on using this form, see bottom of this page or look at the pop-up text over the ⌘ symbols.

Proposed change affects: | UICC apps ⌘ ME Radio Access Network Core Network

Title:	⌘ Update UML diagrams, Add reference to its CORBA/CMIP SSS		
Source:	⌘ SA5 (edwin.tse@ericsson.com)		
Work item code:	⌘ OAM-NIM	Date:	⌘ 11/19/2004
Category:	⌘ F	Release:	⌘ Rel-6
	Use <u>one</u> of the following categories: F (correction) A (corresponds to a correction in an earlier release) B (addition of feature), C (functional modification of feature) D (editorial modification) Detailed explanations of the above categories can be found in 3GPP TR 21.900 .		Use <u>one</u> of the following releases: 2 (GSM Phase 2) R96 (Release 1996) R97 (Release 1997) R98 (Release 1998) R99 (Release 1999) Rel-4 (Release 4) Rel-5 (Release 5) Rel-6 (Release 6)

Reason for change: ⌘ Because of the new SS 32.313 proposal, we need a reference in this TS to refer to it. The UML diagrams are not using constructs from UML Repertoire.

Summary of change: ⌘ Add the reference to the SS specification. Update UML diagrams

Consequences if not approved: ⌘ The reference list specified in Generic IRP Management IS is incomplete. The UML diagrams are using constructs that are not defined in UML Repertoire.

Clauses affected: ⌘ Clause "Introduction", 5.2.1, 5.2.2, 6.1, 6.3, 6.4

Other specs affected:		Y	N			
	⌘	<input checked="" type="checkbox"/>	<input type="checkbox"/>			Other core specifications
		<input checked="" type="checkbox"/>	<input type="checkbox"/>			Test specifications
		<input checked="" type="checkbox"/>	<input type="checkbox"/>	O&M Specifications		

Other comments: ⌘

Change in Clause "Introduction"

Introduction

The present document is part of the 32.300-series covering the 3rd Generation Partnership Project: Technical Specification Group Services and System Aspects; Telecommunication management; as identified below:

32.311: "Generic Integration Reference Point (IRP) management; Requirements";

32.312: "Generic Integration Reference Point (IRP) management; Information Service (IS)";

[32.313: "Generic Integration Reference Point \(IRP\) management; Common Object Request Broker Architecture \(CORBA\) Solution Set \(SS\)";](#)

[32.314: "Generic Integration Reference Point \(IRP\) management; Common Management Information Protocol \(CMIP\) Solution Set \(SS\)";](#)

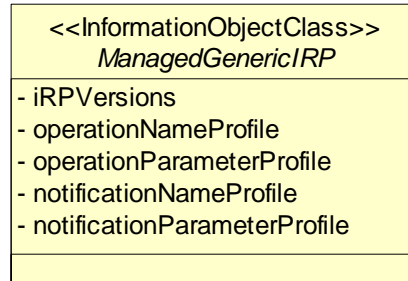
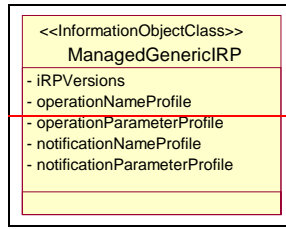
The Itf-N interface is built up by a number of Integration Reference Points (IRPs) and a related Name Convention, which realise the functional capabilities over this interface. The basic structure of the IRPs is defined in 3GPP TS 32.101 [1] and 3GPP TS 32.102 [2].

End of change in Clause "Introduction"

Change in Clause 5.2.1 – 5.2.2

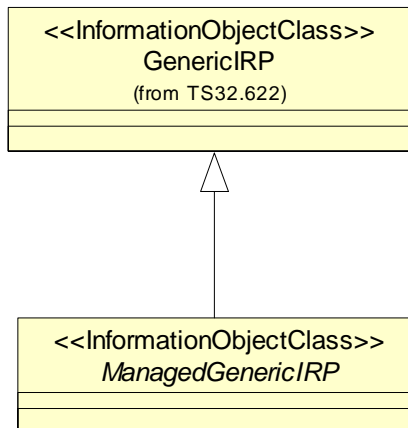
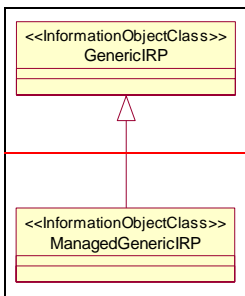
5.2.1 Attributes and relationships

This clause depicts the set of IOCs that encapsulate information relevant for this service. This clause provides the overview of all information object classes in UML. Subsequent clauses provide more detailed specification of various aspects of these information object classes.



5.2.2 Inheritance

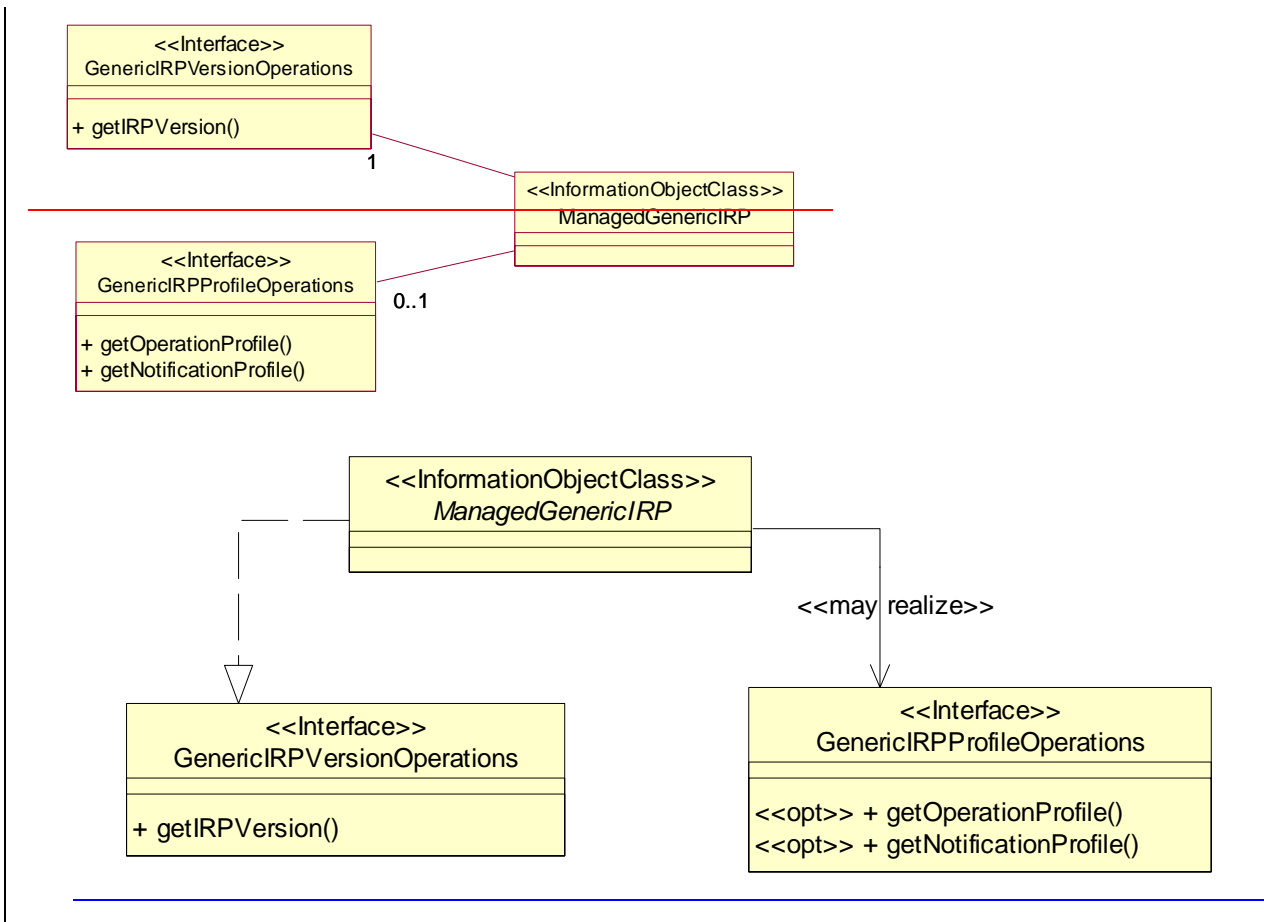
This clause depicts the inheritance relationships that exist between information object classes.



End of change clause 5.2.1 – 5.2.2

Change in clause 6.1

6.1 Class diagram representing interfaces



End of change in Clause 6.1

Change in Clause 6.3

6.3 genericIRPVersionOperations Interface [\(M\)](#)

6.3.1 Operation `getIRPVersion` (M)

6.3.1.1 Definition

IRPManager wishes to find out the IRP SS versions supported by an IRP. The IRP shall respond with a set of supported IRP SS version(s). The list of returned IRP versions is such that the IRPManager can use any of these versions without having to specify an IRPVersion to the IRPAgent.

End of change in Clause 6.3

Change in Clause 6.4

6.4 genericIRPProfileOperations Interface [\(O\)](#)

6.4.1 Operation getOperationProfile (O)

6.4.1.1 Definition

IRPManager invokes this operation to query the detailed profile of an IRP (supported operations and supported parameters) for a specific supported version. The notification profile will provide details about notifications that are specifically defined by this IRP.

End of change in Clause 6.4