



## CHANGE REQUEST

⌘ **33.200 CR 022** ⌘ rev **-** ⌘ Current version: **5.0.0** ⌘

For **HELP** on using this form, see bottom of this page or look at the pop-up text over the ⌘ symbols.

**Proposed change affects:** UICC apps  ME  Radio Access Network  Core Network

<b>Title:</b>	⌘	Removal of Automatic Key Management from Release 5	
<b>Source:</b>	⌘	SA WG3	
<b>Work item code:</b>	⌘	SEC1-MAP	<b>Date:</b> ⌘ 09/10/2002
<b>Category:</b>	⌘	<b>C</b>	<b>Release:</b> ⌘ Rel-5
		Use <u>one</u> of the following categories:	Use <u>one</u> of the following releases:
		<b>F</b> (correction)	2 (GSM Phase 2)
		<b>A</b> (corresponds to a correction in an earlier release)	R96 (Release 1996)
		<b>B</b> (addition of feature),	R97 (Release 1997)
		<b>C</b> (functional modification of feature)	R98 (Release 1998)
		<b>D</b> (editorial modification)	R99 (Release 1999)
		Detailed explanations of the above categories can be found in 3GPP TR 21.900.	Rel-4 (Release 4)
			Rel-5 (Release 5)
			Rel-6 (Release 6)

<b>Reason for change:</b>	⌘	Automatic Key Management was not included in Rel-5, even though the Security Requirements were included in TS 33.200. TSG SA#17 requested removal of Automatic Key Management from TS 33.200 Release 5.
<b>Summary of change:</b>	⌘	Removal of Automatic Key Management requirements added by 33.200 CR021.
<b>Consequences if not approved:</b>	⌘	Non-alignment with CN Release 5 specifications which do not implement Automatic Key Management.

<b>Clauses affected:</b>	⌘	1, 2, 3.2, 3.3, 4 to 5.4, 7, 8 (deleted), Annex A (Re-instated)								
<b>Other specs affected:</b>	⌘	<table border="1" style="display: inline-table; vertical-align: middle;"> <tr> <td style="width: 20px; text-align: center;">Y</td> <td style="width: 20px; text-align: center;">N</td> </tr> <tr> <td style="text-align: center;"> </td> <td style="text-align: center;">X</td> </tr> <tr> <td style="text-align: center;"> </td> <td style="text-align: center;">X</td> </tr> <tr> <td style="text-align: center;"> </td> <td style="text-align: center;">X</td> </tr> </table> Other core specifications ⌘ Test specifications ⌘ O&M Specifications ⌘	Y	N		X		X		X
Y	N									
	X									
	X									
	X									
<b>Other comments:</b>	⌘									

\*\*\*\*\* START OF CHANGES \*\*\*\*\*

## 1 Scope

This technical specification covers the security mechanisms and procedures necessary to protect the MAP protocol. The complete set of enhancements and extensions to facilitate security protection for the MAP protocol is termed MAPsec and it covers transport security in the MAP protocol itself and the security management procedures.

The security mechanisms specified for MAP are on the application layer. This means that MAPsec is independent of the network and transport protocols to be used. ~~This specification also includes automatic key management mechanisms to update the security associations used to protect the MAP signalling.~~

This technical specification contains the stage-2 specification for security protection of the MAP protocol. The actual implementation (stage-3) specification can be found in the MAP stage-3 specification, TS 29.002 [4].

NOTE: It is explicitly noted that automated key management and key distribution is not part of Rel-5. All key management and key distribution in Rel-5 shall therefore be carried out by other means. (See Annex A)

## 2 References

The following documents contain provisions which, through reference in this text, constitute provisions of the present document.

- References are either specific (identified by date of publication, edition number, version number, etc.) or non-specific.
- For a specific reference, subsequent revisions do not apply.
- For a non-specific reference, the latest version applies. In the case of a reference to a 3GPP document (including a GSM document), a non-specific reference implicitly refers to the latest version of that document *in the same Release as the present document*.

- [1] 3G TS 21.133: Security Threats and Requirements.
- [2] 3G TS 21.905: 3G Vocabulary.
- [3] 3G TS 23.060: General Packet Radio Service (GPRS); Service description; Stage 2.
- [4] 3G TS 29.002: Mobile Application Part (MAP) specification.
- [5] NIST Special Publication 800-38A "Recommendation for Block Cipher Modes of Operation" December 2001.
- [6] ISO/IEC 9797: "Information technology -- Security techniques -- Message Authentication Codes (MACs) -- Part 1: Mechanisms using a block cipher", Ed.1, 1999-12-16.
- [7] FIPS Publication 197: "Specification for the Advanced Encryption Standard (AES)", November 26, 2001.
- [8] ~~draft arkko-map-doi-05-pa2.txt: "The MAP Security Domain of Interpretation for ISAKMP".~~

\*\*\*\*\* NEXT CHANGED CLAUSES \*\*\*\*\*

## 3.2 Symbols

For the purposes of the present document, the following symbols apply:

- |    |                           |
|----|---------------------------|
| f6 | MAP encryption algorithm. |
| f7 | MAP integrity algorithm.  |

<del>Zd</del>	<del>MAPsec interface between KACs belonging to different PLMNs</del>
<del>Ze</del>	<del>MAPsec interface between KACs and MAP-NEs within the same PLMN</del>
Zf	The MAP application layer security interface between MAP-NEs engaged in security protected signalling.

### 3.3 Abbreviations

For the purposes of the present document, the following abbreviations apply:

AES	Advanced Encryption Standard
<del>DoI</del>	<del>Domain of Interpretation</del>
<del>ESP</del>	<del>Encapsulating Security Payload</del>
FALLBACK	Fallback to unprotected mode indicator
<del>IETF</del>	<del>Internet Engineering Task Force</del>
<del>IKE</del>	<del>Internet Key Exchange</del>
IP	Internet Protocol
<del>IPsec</del>	<del>IP security – a collection of protocols and algorithms for IP security incl. key mgmt.</del>
<del>ISAKMP</del>	<del>Internet Security Association Key Management Protocols</del>
IV	Initialisation Vector
<del>KAC</del>	<del>Key Administration Centre</del>
MAC	Message Authentication Code
MAC-M	MAC used for MAP
MAP	Mobile Application Part
MAP-NE	MAP Network Element
MAPsec	MAP security – the MAP security protocol suite
MEA	MAP Encryption Algorithm identifier
MEK	MAP Encryption Key
MIA	MAP Integrity Algorithm identifier
MIK	MAP Integrity Key
NDS	Network Domain Security
NE	Network Entity
PPI	Protection Profile Indicator
PPRI	Protection Profile Revision Identifier
PROP	Proprietary field
SA	Security Association
SADB	Security Association DataBase (also referred to as SAD)
SPD	Security Policy Database (sometimes also referred to as SPDB)
SPI	Security Parameters Index
TVP	Time Variant Parameter

\*\*\*\*\* NEXT CHANGED CLAUSES \*\*\*\*\*

## 4 Principles of MAP application layer security

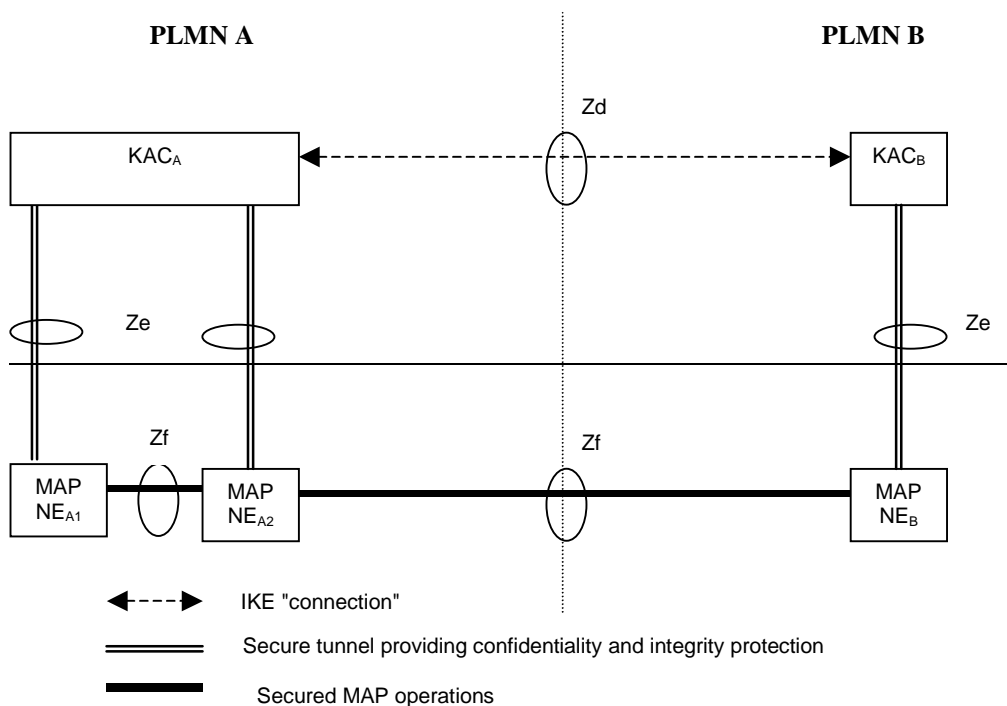
This technical specification defines mechanisms for protecting the MAP protocol at the application layer. The MAP protocol may also be protected at the network layer when IP is used as the transport protocol. However, whenever inter-working with networks using SS7-based transport is necessary, protection at the application layer shall be used.

The security measures specified in this TS are only fully useful if all interconnected operators use them. In order to prevent active attacks all interconnected operators must at least use MAPsec with the suitable protection levels as indicated in this specification and treat the reception of all MAP messages (protected and unprotected) in a uniform way in the receiving direction.

Before protection can be applied, Security Associations (SA) needs to be established between the respective MAP network elements. Security associations define, among other things, which keys, algorithms, and protection profiles to use to protect MAP signalling. The necessary MAPsec-SAs between networks are negotiated between the respective ~~Key Administration Centres (KACs) of the network operators~~. The negotiated SA will be effective PLMN-wide and distributed to all network elements which implement MAP application layer security within the PLMN. Signalling

traffic protected at the application layer will, for routing purposes, be indistinguishable from unprotected traffic to all parties except for the sending and receiving entities.

Protection at the application layer implies changes to the application protocol itself to allow for the necessary security functionality to be added. Figure 1 gives an overview of the architecture used for MAPsec.



**Figure 1: Overview of the Zd, Ze and Zf interfaces**

The following interfaces are defined MAPsec.

— **Zd interface (KAC-KAC)**

— The Zd interface is used to negotiate MAPsec Security Associations (SAs) between PLMNs. The traffic over Zd consists only of IKE negotiations. The negotiated MAPsec SAs are valid on a PLMN to PLMN basis.

— **Ze interface (KAC-NE)**

— The Ze interface is located between MAP-NEs and a KAC from the same PLMN. This interface is used for transport of MAPsec SAs and the relevant security policy information from the KAC to the MAP-NE.

— **The Zf interface (NE-NE)**

— The MAP application layer security interface between MAP-NEs engaged in security protected signalling is referred to in this specification as the Zf interface. The Zf interface is located between MAP-NEs. The MAP-NEs may be from the same PLMN or from different PLMNs (as shown in figure 1). The MAP-NEs use MAPsec SAs received from a KAC to protect the MAP operations. The MAP operations within the MAP dialogue are protected selectively as specified in the applied MAPsec protection profile. The interface applies to all MAPsec transactions, intra- or inter-PLMN.

The security services provided by MAPsec are:

- data integrity;
- data origin authentication;
- anti-replay protection;
- confidentiality (optional).

Annex B includes detailed procedures on how secure MAP signalling is performed between two MAP-NEs.

## 5 MAP security (MAPsec)

### 5.1 Security services provided by MAPsec

The security services provided by MAPsec are:

- data integrity;
- data origin authentication;
- anti-replay protection;
- confidentiality (optional).

#### 5.1A Properties and tasks of Key Administration Centres (KACs)

Key Administration Centres (KACs) are entities that are used for negotiating MAPsec SAs on behalf of MAP NEs. The KACs are defined to handle communication over these interfaces:

- the Zd interface, which is located between KACs from different PLMNs. The IKE protocol with support for MAPsec DoI shall be used over this interface.
- the Ze interface, which is located between a KAC and a MAP NE within the same PLMN is used to transfer MAPsec SAs and security policy from KACs to MAP NEs. The SAs and security policy must be transferred in a secure manner.

When a MAP NE needs to establish a secure connection towards another MAP NEs it will request a MAPsec SA from the KAC if it cannot find any appropriate MAPsec SA in its local SAD. The KAC will then either provide an existing MAPsec SA or negotiate a new MAPsec SA, before returning the MAPsec SA to the MAP NE.

A MAPsec SA is valid for all MAP communications between the two PLMNs for which it is negotiated. That is, the same MAPsec SA shall be provided to all MAP NEs in PLMN A for communication with MAP NEs in PLMN B. Each PLMN can have one or more KACs. Each KAC will be responsible to define MAPsec SAs with a well defined set of reachable PLMNs. The number of KACs in a PLMN will depend on the need to differentiate between the externally reachable destinations, the need to balance the traffic load and to avoid single points of failure.

KACs perform the following operations:

- Negotiate SAs for MAPsec with other KACs belonging to other network operators. This action is triggered either by request for a MAPsec SA by a NE or by policy enforcement when MAPsec SAs should always be available. The negotiation of MAPsec SAs is performed at Zd interface using IKE protocol with MAPsec DoI.
- Convert specific negotiated SA parameter so that they can be understood by NEs. In particular, the KAC shall convert negotiated SA duration in seconds as negotiated in MAPsec DoI to UTC absolute time format.
- Perform refresh of MAPsec SAs. This could be triggered internally by SA lifetime supervision depending on the policies set by the operator.
- Distribute MAPsec SAs and policy information to NEs belonging to the same PLMN as the KAC.
- KAC shall be able to securely transmit MAPsec SAs and policy information to the NEs within its PLMN.

KACs are also responsible for the maintenance of the following databases:

- KAC SPD-MAP: Defines the scope, the security policy, in which MAP SAs may be negotiated (e.g. allowed MAP PPs, Algorithms, SA lifetimes). This database is updated on operator initiative in the framework of the roaming agreements.
- NE SPD-MAP: A database in a KAC containing the MAP security policy information that will be used by an NE in protecting MAP messages (e.g. value of “Fallback to unprotected Mode Indicator” and table of protected MAPsec operation components). This is held to update the NEs.

~~— NE SADB-MAP: A database in a KAC containing MAP SA information. This is held to allow the KAC to update the NE.~~

~~KACs are responsible for security sensitive operations and shall be physically secured. They shall offer capabilities for the secure storage of long term keys used for IKE authentication.~~

## 5.2 Properties and tasks of MAPsec enabled network elements

MAPsec MAP-NEs shall maintain the following databases:

- NE-SPD-MAP: A database in an NE containing MAP security policy information (see clause 5.3);
- NE-SADB-MAP: A database in an NE containing MAPsec-SA information. MAP-NEs shall monitor the SA hard expiry time and expired SAs shall be deleted from the database (see clause 5.4).

MAPsec MAP-NEs shall be able to perform the following operations:

- Secure MAP signalling (i.e. send/receive protected or unprotected messages) according to information in NE-SPD-MAP and NE-SADB-MAP. The structure of protected messages is defined in clause 5.5 and the protection algorithms are defined in clause 5.6.
- ~~— Communicate with the KAC in the same PLMN in order that the NE SPD-MAP and NE SADB-MAP in the NE can be updated.~~
- ~~— NE shall be able to securely receive MAPsec SAs and policy information from the KAC within its PLMN.~~

## 5.3 Policy requirements for the MAPsec Security Policy Databases (SPD)

~~Two security policy databases, KAC SPD-MAP and NE SPD-MAP, are required to implement MAPsec. KAC SPD-MAP holds the information needed by the KACs to negotiate MAPsec SAs. NE SPD-MAP holds the security policy information used by a NE element when applying MAPsec to message over the Zf interface. A KAC holds a copy of NE SPD-MAP in order to update the NEs in the same PLMN.~~

The security policies for MAPsec key management are specified in the NE's SPD. ~~SPDNE-SPD-MAP~~ entries define which MAP operation components are protected and which MAP SAs (if any) to use to protect MAP signalling based on the PLMN of the peer NE. There can be no local security policy definitions for individual NEs. Instead, SPD entries of different NEs within the same PLMN shall be identical.

### Fallback to unprotected mode:

- The "fallback to unprotected mode" (enabled/disabled) shall be available to the MAP-NE before any communication towards other MAP-NEs can take place. For the receiving direction, it is sufficient to have a single parameter indicating whether fallback for incoming messages is allowed or not. For the sending direction, the information should indicate for each destination PLMN whether fallback for outgoing messages is allowed or not;
- The use of the fallback indicators is specified in Annex B;
- The security measures specified in this TS are only fully useful for a particular PLMN if it disallows fallback to unprotected mode for MAP messages received from any other PLMN.

### Table of MAPsec operation components:

- The security policy database (SPD) shall contain a table of MAPsec operation components for incoming messages. This table contains operation components which have to be carried in MAPsec messages with Protection Mode 1 or 2. The use of MAPsec operation components is specified in Annex B.

### Uniformity of protection profiles:

- In order to ensure full protection, a particular PLMN shall use the same protection profile for incoming MAPsec messages from all other PLMNs. In particular, full protection is not ensured when protection profile A (no protection) is used for some source PLMNs and other profiles are used for other source PLMNs.

**Explicit policy configuration:**

- The SPD shall contain an entry for each PLMN the MAP-NE is allowed to communicate with.

Editor's note: Some issues need to be investigated: Non-synchronised expiration times issue, mechanism to distinguish inbound/outbound SPDs ?

## 5.4 MAPsec security association attribute definition

The MAPsec security association shall contain the following data elements:

- **Destination PLMN-Id:**

PLMN-Id is the ID number of the receiving Public Land Mobile Network (PLMN). The value for the PLMN-Id is a concatenation of the Mobile Country Code (MCC) and Mobile Network Code (MNC) of the receiving network.

- **Security Parameters Index (SPI):**

SPI is a 32-bit value that is used in combination with Destination PLMN-Id to uniquely identify a MAPsec-SA.

- **Sending PLMN-Id:**

PLMN-Id is the ID number of the sending Public Land Mobile Network (PLMN). The value for the PLMN-Id is a concatenation of the Mobile Country Code (MCC) and Mobile Network Code (MNC) of the sending network.

- **MAP Encryption Algorithm identifier (MEA):**

Identifies the encryption algorithm. Mode of operation of algorithm is implicitly defined by the algorithm identifier. Mapping of algorithm identifiers is defined in clause 5.6.

- **MAP Encryption Key (MEK):**

Contains the encryption key. Length is defined according to the algorithm identifier.

- **MAP Integrity Algorithm identifier (MIA):**

Identifies the integrity algorithm. Mode of operation of algorithm is implicitly defined by the algorithm identifier. Mapping of algorithm identifiers is defined in section 5.6.

- **MAP Integrity Key (MIK):**

Contains the integrity key. Length is defined according to the algorithm identifier.

- **Protection Profile Revision Identifier (PPRI):**

Contains the revision number of the PPI. Length is 8 bits. PPRI-values are defined in section 6.3.

- **Protection Profile Identifier (PPI):**

Identifies the protection profile. Length is 16 bits. Mapping of profile identifiers is defined in section 6.

- **SA Hard Expiry Time:**

Defines the actual expiry time of the SA. The hard expiry time shall be given in UTC time.

- **SA Soft Expiry Time:**

Defines soft expiry time of the SA for outbound traffic. The soft expiry time shall be given in UTC time.

Editor's Note: The exact format and length to be defined.

After the hard expiry time has been reached the SA shall no longer be used for inbound or outbound traffic. When the soft expiry time is reached, the SA shall not be used any longer for the outbound traffic unless no other valid SA exists.



A MAPsec SA is uniquely identified by a destination PLMN-Id and a Security Parameters Index, SPI. As a consequence, during SA creation, the SPI is always chosen by the receiving side (i.e. the SPI for MAP communications from PLMN A to PLMN B is selected by KAC in PLMN B).

If the SA is to indicate that MAPsec is not to be applied then all the algorithm attributes shall contain a NULL value.

\*\*\*\*\* NEXT CHANGED CLAUSES \*\*\*\*\*

## ~~7 Security Association and Key Management Procedures~~

~~This clause contains details on the procedures used by the KACs to negotiate new SAs over the Zd interface.~~

### ~~7.1 Inter-PLMN Procedure~~

~~KACs from different PLMNs will use MAPsec DoI [7] and IKE to set up MAPsec SAs for use between their PLMNs. The information needed to negotiate the new SAs is held in the KAC SPD MAP. The KAC shall assign the MAP Encryption Algorithm Identifier onto the MAPsec DoI TransformID [7] when negotiating a new pair of MAPsec SA. Similarly the KAC shall assign the MAP Integrity Algorithm Identifier onto the authentication algorithm attribute of the SA [7] for IKE phase 2 when negotiating a new pair of MAPsec SA. The details of these assignments are ffs. The KAC shall not use the Key Length or Key Rounds Attributes of the SA for IKE phase 2 as this information is implicitly available for the partner KAC via the used TransformID. The negotiated SA Life Duration shall be transformed into the Hard Expiry Time in the MAPsec SA. It should be noted that although part of an SA, the Soft Expiry Time is not negotiated by the KACs. The value of Soft Expiry Time is set by local policy in the KAC.~~

~~Editor's note: The mapping between MAPsec DoI and MAPsec SA algorithms needs specifying.~~

### ~~7.2 Intra-PLMN Procedure~~

~~A KAC must create new MAPsec SAs to enable communication between NEs in its PLMN. It does this using the data stored in KAC MAP SPD except it must transform the SA Lifetime given in KAC SPD MAP into a MAPsec Hard Expiry Time and generate the relevant cryptographic keys. The value of Soft Expiry Time is set by local policy in the KAC.~~

## ~~8 Local Security Association and Policy Distribution~~

~~The KAC transmits SAs and security policy information to the NEs in the same PLMN. The method of transmitting this data to the NEs must satisfy the following requirements:~~

- ~~— The push mechanism requires the KAC to maintain active SAs with all other networks that MAP signalling is exchanged with. The KAC internally supervises the SA lifetime and performs automatic SA renewal with all other networks that MAP signalling is exchanged with.~~
- ~~— If new SAs are available, the KAC distributes these SAs to the NEs that require them, according to the KAC policy. The KAC shall provide fresh SAs to its NEs for a specific network in time before the soft expiry time of the current active SA has been reached.~~
- ~~— The NEs shall ensure that only Ze messages sent by a KAC in the same security domain are accepted. Depending on the security domain policy, the NE may only accept Ze messages from one or more specific KACs within the domain, out of the set of KACs in that domain.~~
- ~~— The KAC shall ensure that only Ze messages sent by a NE in the same security domain are accepted (Otherwise an attacker could, e.g. by sending false messages, force the KAC to overload the NE's).~~
- ~~— The KAC shall be able to know whether the MAP NE needs MAPsec SAs only for internal communication within the security domain.~~

—The Ze Interface shall be able to provide cryptographical protection against the insertion of, or tampering with, messages by an attacker. Furthermore, it shall be possible to protect cryptographically messages containing sensitive information against eavesdropping.

Editors' note: It is a working assumption of SA-WG3 that the Ze Interface protocol will be IP-based, in which case it will be protected using NDS/IP.

## 8.1 SA Distribution Procedure

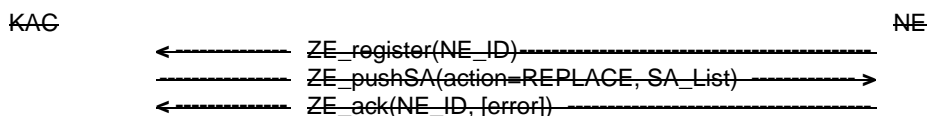
Editor's note: The aim of the text below is to provide a functional description of the Ze interface as a starting point for the stage 3 specification. The full details of the interface are ffs and should be resolved in the stage 3 work.

This clause describes message flows for an extended push mechanism for MAPsec SA distribution over the Ze interface.

### Case 1: Initial registration and SA distribution

To initiate communication with the KAC, each NE that requires MAPsec SAs initially registers with the KAC to obtain these SAs. The KAC then, according to the KAC policy, pushes the full set of active SAs that the NE requires (defined by network policy) to the NE, such that the NE receives all required SAs directly after registration. The "action" indicator is set to "REPLACE" to indicate that the NE shall use the SA\_List as its new set of SAs, replacing all SAs that are currently in the NE's SADB.

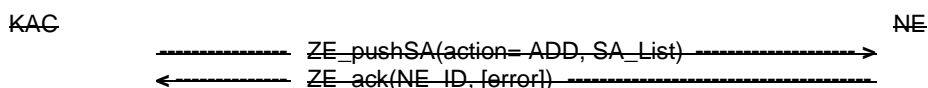
The NE acknowledges the ZE\_pushSA message after successfully installing the SAs in its SADB. Otherwise it responds with an error message (tbd).



### Case 2: Subsequent SA distribution (normal case)

The KAC sends a ZE\_pushSA message when a new SA is negotiated by the KAC to all NEs that require this SA. It is allowed to send several SAs as a list within a single ZE\_pushSA message. The "action" indicator is set to "ADD" to indicate that the NE shall add the SA\_List to its current SADB.

The NE acknowledges the ZE\_pushSA message after successfully installing the SAs in its SADB. Otherwise it responds with an error message (tbd).



NOTE:—The message format for the initial ZE\_pushSA and the ZE\_pushSA for SA updates is the same for both operations, since the parameter "SA\_List" represents a single or a list of SAs.

### Case 3: Handling of inconsistent NE states

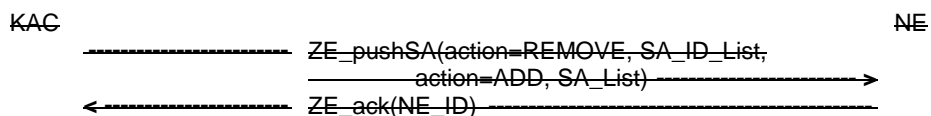
In case of any event in a NE that leads to an inconsistent SA database in a NE, this NE sends a new register message, and receives the full set of active SAs from the KAC. The KAC, when receiving a new registration of an already registered NE, just updates any old registration with the new one.

NOTE:—This step is considered to be relatively unlikely.

### Case 4: SA revocation/removal

In case the revocation of an SA is required, the KAC sends a ZE\_pushSA message identifying a list of the SAs to be removed to all NEs currently using them (the parameter SA\_ID is tbd., but must uniquely identify the SA to be revoked. For example this can be the combination of SPI and destination PLMN\_ID). A list of SAs may be added within the same ZE\_pushSA (replacing the removed SAs). The "action" indicator is set to "REMOVE" to indicate that the NE shall delete the list of SAs identified in SA\_ID\_List from its current SADB, and the action "ADD" may be subsequently used to add the SAs contained in SA\_List to its SADB.

The NE acknowledges the ZE\_pushSA message after successfully removing the SAs from its SADB. Otherwise it responds with an error message (tbd).



NOTES:

- 1) As the NEs in this push model do not have the option to request specific SAs, it is necessary to transmit the complete set of SAs from the KAC to the NE in cases 1 and 3.
- 2) The replacement of a compromised SA which needs to be revoked, described in case 4, could alternatively be done in two steps: by first sending a revoke operation, followed by an add operation as described in case 2.
- 3) The extended push mechanism, as described above, may be used to distribute policy information from the KAC to the NEs in a quite similar fashion, by using a SP\_List, security policy list parameter instead of the SA\_List parameter.

---

## Annex A (informative):

~~Void~~

### Guidelines for manual key management

#### A.1 Inter-domain Security Association and Key Management Procedures

Manual Inter-domain Security Association and Key Management procedures is subject to roaming agreements.

Some important parts of an inter-domain Security Association and Key Management agreement is:

- to define how to carry out the initial exchange of MAPsec SAs;
- to define how to renew the MAPsec SAs;
- to define how to withdraw MAPsec SAs (including requirements on how fast to execute the withdrawal);
- to decide if fallback to unprotected mode is to be allowed;
- to decide on key lengths, algorithms, protection profiles, and SA expiry times, etc (MAPsec SAs are expected to be fairly long lived).

An SA being used by an NE for incoming traffic expires when it reaches its hard expiry time. When this occurs, the NE can no longer use that SA to process incoming MAPsec traffic. If a new additional valid SA is installed into the NE, the "old" one must still be kept by the NE until it reaches its hard expiry time, so as to be able to accept incoming traffic still received under the "old" SA.

An SA being used by an NE for outgoing traffic expires when it reaches its soft expiry time. When this occurs, the NE must start using another valid SA. If no such valid SA exists, the NE continues to use the "old" SA until it reaches its hard expiry time or another valid SA effectively becomes available.

In case the current SA gets compromised, a new valid SA should be made immediately available to the NE, which should then stop using the compromised SA and delete it.

To ease SA renewal, both PLMNs may decide to set up several MAPsec SAs in advance so that NEs can automatically switch from one SA to another SA. In such a situation, the MAPsec SAs would have different soft and hard expiry times.

When more than one valid SA is available, the NE chooses the one for which the soft expiry time will be reached next.

---

#### A.2 Local Security Association Distribution

Manual Local Security Association Distribution is executed entirely within one PLMN and is consequently at the discretion of the administrative authority.

The requirement on the manual distribution procedures can be summarized as follows:

- Procedures for transporting the relevant MAPsec SA to the MAP-NEs must be defined. In order to ensure that the MAPsec SA are present when needed, all valid MAPsec SA should be distributed to all MAP-NEs as soon as they are available.
- Procedures for revocation of MAPsec SAs must be defined.

\*\*\*\*\* END OF CHANGES \*\*\*\*\*