
Source: SA5 (Telecom Management)
Title: Rel-4CR 32.642 (UTRAN network resources Integration Reference Point (IRP): Network Resource Model)
Document for: Approval
Agenda Item: 7.5.3

Doc-1st-	Spec	CR	Rev	Phase	Subject	Cat	Version-	Doc-2nd-	Workitem
SP-020490	32.642	003	-	Rel-4	UML corrections	F	4.1.0	S5-026707	OAM-CM

CR-Form-v7

CHANGE REQUEST

⌘ **32.642 CR 003** ⌘ rev **-** ⌘ Current version: **4.1.0** ⌘

For **HELP** on using this form, see bottom of this page or look at the pop-up text over the ⌘ symbols.

Proposed change affects: UICC apps ME Radio Access Network Core Network

Title:	⌘ UML corrections		
Source:	⌘ S5		
Work item code:	⌘ OAM-CM	Date:	⌘ 23/08/2002
Category:	⌘ F	Release:	⌘ Rel-4
<i>Use one of the following categories:</i>		<i>Use one of the following releases:</i>	
F (correction)		2	(GSM Phase 2)
A (corresponds to a correction in an earlier release)		R96	(Release 1996)
B (addition of feature),		R97	(Release 1997)
C (functional modification of feature)		R98	(Release 1998)
D (editorial modification)		R99	(Release 1999)
Detailed explanations of the above categories can be found in 3GPP TR 21.900 .		Rel-4	(Release 4)
		Rel-5	(Release 5)
		Rel-6	(Release 6)

Reason for change:	⌘ To make the UML diagrams unambiguous.
Summary of change:	⌘ The non UML compliant parts of the diagrams are replaced with UML compliant parts.
Consequences if not approved:	⌘ The UML diagrams are ambiguous.

Clauses affected:	⌘ 6.2.2								
Other specs affected:	<table border="1"><tr><td>Y</td><td>N</td></tr><tr><td><input type="checkbox"/></td><td><input checked="" type="checkbox"/></td></tr><tr><td><input type="checkbox"/></td><td><input checked="" type="checkbox"/></td></tr><tr><td><input type="checkbox"/></td><td><input checked="" type="checkbox"/></td></tr></table> Other core specifications ⌘ Test specifications ⌘ O&M Specifications ⌘	Y	N	<input type="checkbox"/>	<input checked="" type="checkbox"/>	<input type="checkbox"/>	<input checked="" type="checkbox"/>	<input type="checkbox"/>	<input checked="" type="checkbox"/>
Y	N								
<input type="checkbox"/>	<input checked="" type="checkbox"/>								
<input type="checkbox"/>	<input checked="" type="checkbox"/>								
<input type="checkbox"/>	<input checked="" type="checkbox"/>								
Other comments:	⌘								

How to create CRs using this form:

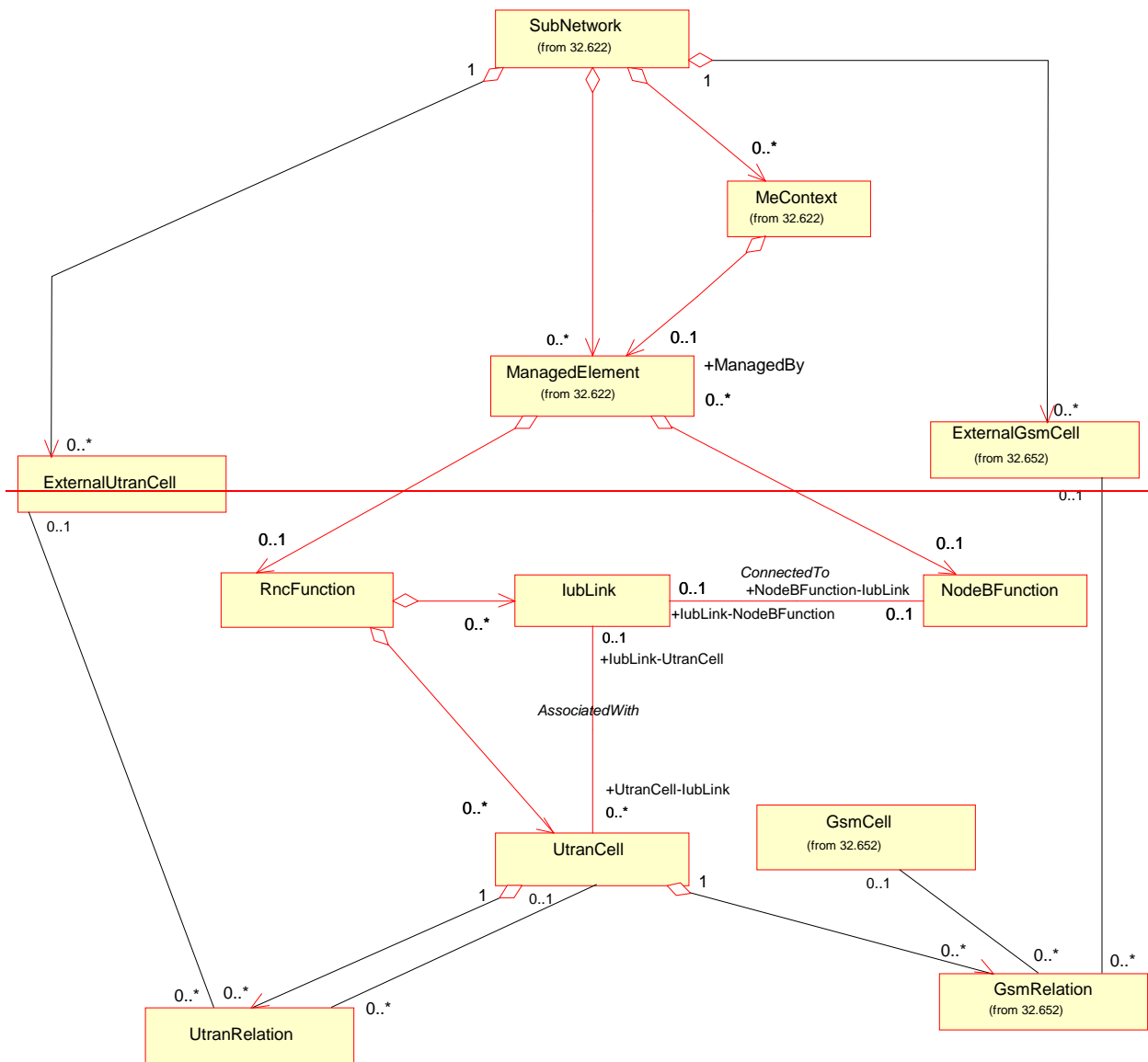
Comprehensive information and tips about how to create CRs can be found at <http://www.3gpp.org/specs/CR.htm>.
Below is a brief summary:

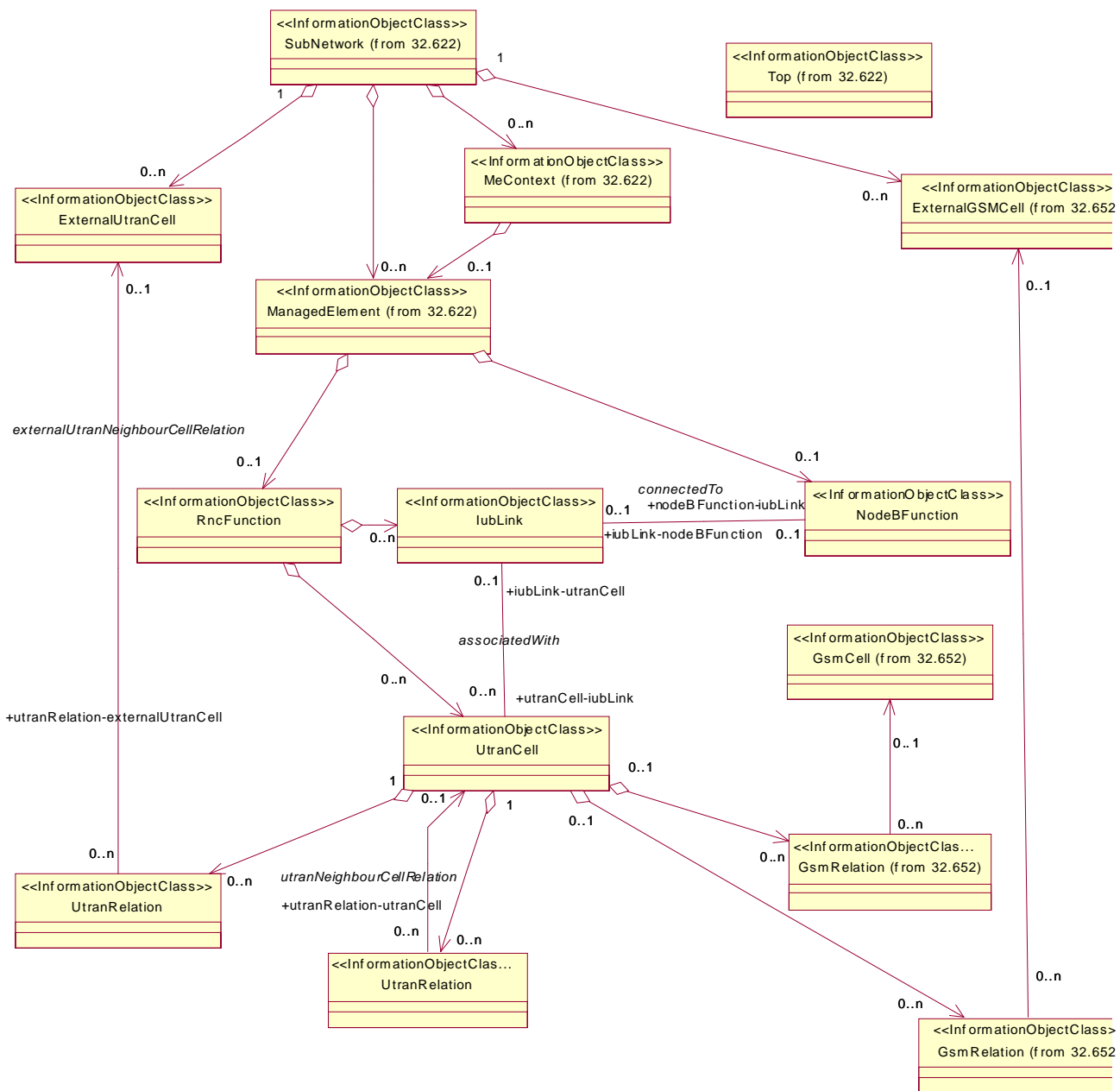
- 1) Fill out the above form. The symbols above marked ⌘ contain pop-up help information about the field that they are closest to.
- 2) Obtain the latest version for the release of the specification to which the change is proposed. Use the MS Word "revision marks" feature (also known as "track changes") when making the changes. All 3GPP specifications can be downloaded from the 3GPP server under [ftp://ftp.3gpp.org/specs/](http://ftp.3gpp.org/specs/) For the latest version, look for the directory name with the latest date e.g. 2001-03 contains the specifications resulting from the March 2001 TSG meetings.
- 3) With "track changes" disabled, paste the entire CR form (use CTRL-A to select it) into the specification just in front of the clause containing the first piece of changed text. Delete those parts of the specification which are not relevant to the change request.

6.2.2 Containment/Naming and Association diagrams

Figure 6.2 and 6.3 show the containment/naming hierarchy and the associations of the UTRAN NRM.

NOTE: The Managed Object containment/naming relationships are in the diagram(s) below indicated by UML “Aggregation by reference” (“hollow diamonds”).





- NOTE 1: The listed cardinality numbers represent transient as well as steady-state numbers, and reflect all managed object creation and deletion scenarios.
- NOTE 2 : The association between GsmRelation and GsmCell is optional. It may be valid if both the UtranCell and the GsmCell are managed by the same management node.
- NOTE 3: The UtranRelation and GeranRelation can be contained under MOCs defined in other NRMs.

Figure 6.2: UTRAN NRM Containment/Naming and Association diagram

Each Managed Object is identified with a Distinguished Name (DN) according to 3GPP TS 32.300 [13] that expresses its containment hierarchy. As an example, the DN of a Managed Object representing a cell could have a format like:

SubNetwork=Sweden,meContext=MEC-Gbg-1,ManagedElement=RNC-Gbg-1, rncFunction=RF-1,utranCell=Gbg-1.