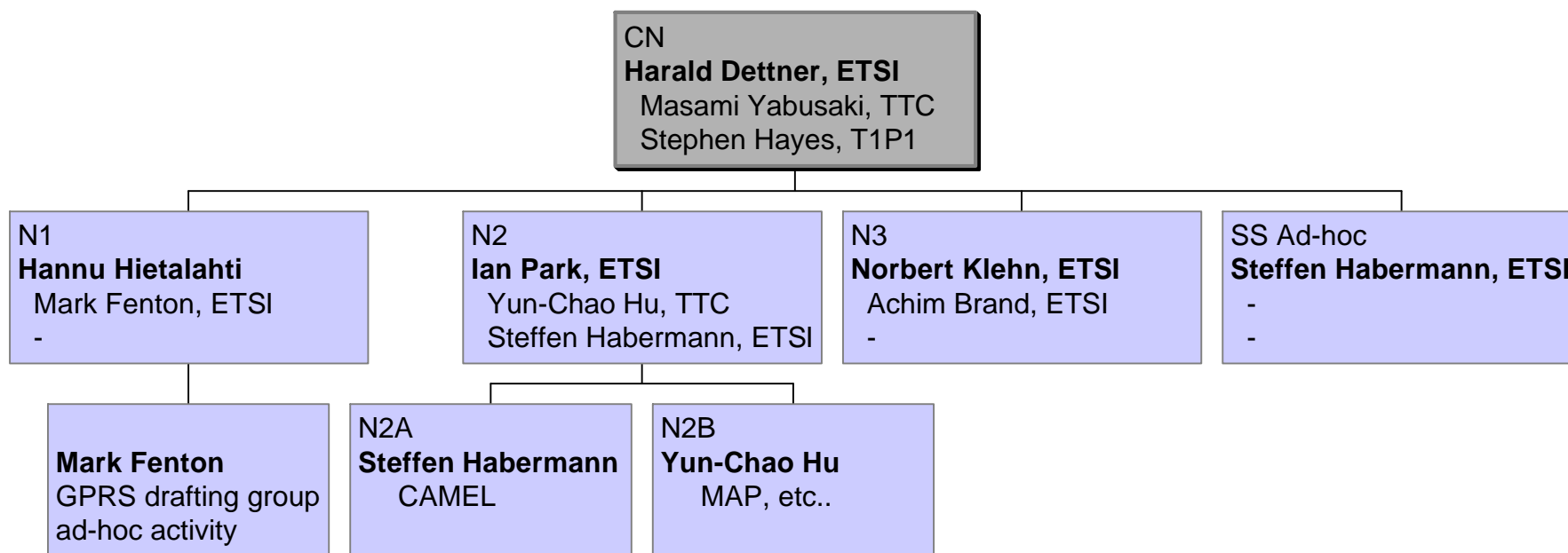


# TSG\_CN report to TSG\_SA#4

Harald Dettner  
Chairman TSG\_CN/ETSI SMG3

Miami, Florida, June 1999

# Organisation of TSG\_CN



## Support Arrangements (1)

- Support arrangements are at present not sufficient
- Respective consequences for the quality of CN work output
- 3 new colleagues for MCC for CN support committed, ramp up from July onward

**In total 4 colleagues for CN & working groups support are planned**

- Thanks to all those who currently have to replace missing colleagues respectively fill gaps



## TSG\_CN Meeting Schedule

- Various meetings are scheduled (see status report preview)
- CN Plenaries joint/linked with SA Plenaries.
- High density of working group meetings  
no common view on  
more meetings vs more offline work/less meetings  
current amount 4-6 weeks period seems accepted  
compromise.

## TSG\_CN Co-Operation with ETSI/SMG3

- Almost all activities are joint meeting activities
  - ETSI/SPS3 continues relation with TSG\_CN for CAMEL3
- Pure SMG3 issue identified so far:  
*Supplementary service interworking  
GSM/PLMN to ETSI ISDN*
  - affected specifications 09.12, 09.14 remain in SMG3
- HO, cell selection under investigation.

## TSG\_CN Common Issues

### Working Methods - Guidance welcome

- Amount of “identical” CRs against different versions
  - maintenance old versions: R’96, ’97, ’98, R’99
  - not all “shadow CRs” produced yet by CN working groups
- R’99 WI’s only in 20+ series specs
  - to be confirmed by SMG#

- Approval misalignment



- Consequences of approval/non-approval here and there.
- Does SMG# want to approve 20+series CRs before SMG#31

# TSG\_CN#4

## Amount of approved CR's

WI	# CRs	WI	# CRs
ASCI	4	04.08 split	4
CAMEL	39	PCS Harm.	8
"03.03"	7	SoLSA	5
CCBS	2	EDGE/NSS	3
MSP Ph1	1	NITZ	1
MNP	6	LCS	???
GPRS	103		
SAT	1		
TEI	12		



## TSG\_CN N1 Work Items ( )

- N1 is working on:
  - Multimedia Call CS and PO
  - Multicall
  - Classmark separation RAN vs CN
  - GSM-UMTS Interworking
  - Bearer Capabilities for UMTS
  - Turbo-Charger
  - L3 message segmentation
  - QoS Control for Packet services
  - EDGE (NSS Part, higher CS'ed data rates in the core network), almost complete
  - NITZ enhancements (DST), completed

# TSG\_CN N1

## Status (1)

- 04.08 split RR -- MM/CC/SM  
**-- completed --**

CONTENTS	CURRENT LOCATION	Release 99 SPEC NUMBER	FUTURE EVOLUTION
Skeleton 04.08 for list of references	04.08	04.08	Can be deleted when references from outside 04.08 are updated
RR part of 04.08	04.08 ch. 3, 8, 9,10	04.xx	GSM RAN specification that lives on in ETSI
CN part of 04.08	04.08 ch. 4,5,6,8,9,10	24.xx	Common CN specification that lives on in 3GPP
Section 7 of 04.08	04.08 ch. 7	23.xx	L3 Stage 2 for 3GPP

## TSG\_CN N1

## Status (2)

- 03.22 split under consideration
- Location Services (LCS)
  - joint activity with T1P1.5 LSC to meet SMG#29
- GPRS
  - high amount of corrective CRs
- Work start on
  - Multimedia and Multicall,  
UMTS CC / SM,  
Handover, cell selection
  - Removal of LLC  
Common GTP

## TSG\_CN N2

## Work Items (1)

- Pre-Paging
  - continued after feasibility assessment
  - usage of Pre-paging for OR purpose
  - deferred for >R'99
- Out-of-Band Transcoder Control (report delayed)
- Super charger
  - FS completed/approved, specification work starts
- Turbo-Charger
  - handed over to N1

## TSG\_CN N2

## Work Items (2)

- GLR
  - FS completed/approved, no specification work started (see separate slide)
  
- Security,
  - new Authentication parameter structure  
length of security parameters causes concerns to transport layers  
MAP/TCAP/SCCP, GTP  
VLR/HLR functionality changes not yet analysed
  
  - non-CAMEL IST  
Deletion not endorsed by S3  
=> S3 to clarify on e.g. non-CAMEL IST for GPRS?.

## TSG\_CN Status

### Working Group N2 (CAMEL, MAP)

- CAMELPh3 tight schedule
  - WG N2A tailored for CAMEL only
  - Principles for CAMEL GPRS interaction / non call related traffic identified/endorsed
- CAMEL Ph2
  - Several corrective/stabilising CRs
  - MSC-Address handling correction/clarification to Ph2 accompanied with health warning to CAMEL Ph1
- CAMEL support for GPRS PSTN/ISDN interconnect services. --> >R'99
- SSN issue on CAP almost completed  
transition strategy for GSM outstanding for R'96/R'97

## TSG\_CN / Other issues

### GLR (1)

- Work item on GLR was created intention:
  - 1st Feasibility report
  - 2.nd Specification work depending on (1)
- GLR was discussed in length within N2B and N2 and finally in CN Plenary#4 and Feasibility report approved.
- Dispute on step2 on Specification Work for GLR:
  - 4 companies supported specification work
  - also great opposition against specification within TSG\_CN
  - CN#4 decision:  
GLR not specified within TSG\_CN, it is up to regional interested parties to continue elaboration of specification material and propose it at later point for inclusion in 3G specifications.

## TSG\_CN / Other issues GLR (2)

- To learn: Clear scope of WI essential (FS or specs or both)
- Questions / Problems:
  - voting was proposed to resolve issue
  - If voting would have to be done, where? SA / SA2 / or CN?  
Architectural issue / Management issue  
Voting requires 30 days alerting time.
  - Sufficient rules to not accept a work item even if 4 sponsors exist?



## TSG\_CN N3 Work Items (1)

- Circuit switched data streamlining for GSM R'99
  - SMG1 work reviewed, CRs after SMG1 CRs approval  
Pseudo WI
- EDGE
  - several CRs produced
- FAX 3WI's
  - Real-time ITU-T T.38 based
  - Real-time based on n-t Fax 03.46
  - Study on provision of Fax services in GSM and UMTS  
(T2 driver)

## TSG\_CN N3 Work Items (2)

- An asynch-to-synch HDLC service in GSM and UMTS
- Circuit switched Bearers in UMTS
  - WI to be created on S1 initiative
- Parameters for Bearer- and Tele-services for PIAFS services
  - WI not yet approved, need to be clarified

## TSG\_CN Status

### Working Group SS-ad-hoc

- Group created to relieve N2-B (CAMEL) and work on previous R'99 SS Work items
  - 1st meeting 4-7 May'99 (Vienna)
- CNAP
  - no support from anywhere, proposed for WI-deletion

SS-Interworking GSM-PLMN to ETSI ISDN remains in SMG3

- GSM 09.12 / 09.14 remain in SMG3
  - (no common ISDN platform identified)
  - 09.13 (ISDN SS-ASE - MAP Interworking) in 3GPP (CCBS)

## TSG\_CN SS-ad hoc Work Items ( )

- USSD Enhancements
  - unclear requirements (difference to MMI-Mode of USSD?)
- Follow Me
  - Stage2 with UIC sufficient degree of security available
  - GSM or UMTS WI?
- MSP Ph1
  - completed 06/99
- MSP Ph2
  - CAMEL Ph3 involved (SS per profile)  
==> CAMEL Ph3 requirements check ongoing

## TSG\_CN

### Summary

- MCC Support Arrangements for TSG\_CN currently bad but  
future looks positive
- Detailed work on Rel'99 started
- Scope UMTS release '99 in stabilisation process alignment with other groups ongoing

**END**