

**TSG RAN Meeting #20**  
**Hämeenlinna, Finland, 3 - 6 June, 2003**

**RP-030319**

**Title** CRs (Rel-5 only) to TS 25.423  
**Source** TSG RAN WG3  
**Agenda Item** 7.3.5

RAN3 Tdoc	Spec	curr. Vers.	new Vers.	REL	CR	Rev	Cat	Title	Work item
R3-030635	25.423	5.5.0	5.6.0	REL-5	822	-	F	Correction of the figure of the Information Exchange Failure procedure	TEI5
R3-030652	25.423	5.5.0	5.6.0	REL-5	827	-	F	Alignment of tables in Information Exchange Initiation procedure description	TEI5

## CHANGE REQUEST

# 25.423 CR 822 # rev - # Current version: 5.5.0 #

For [HELP](#) on using this form, see bottom of this page or look at the pop-up text over the # symbols.

Proposed change affects: UICC apps  ME  Radio Access Network  Core Network

<b>Title:</b>	# Correction of the figure of the Information Exchange Failure procedure		
<b>Source:</b>	# RAN WG3		
<b>Work item code:</b>	# TEI5	<b>Date:</b>	# 19/05/2003
<b>Category:</b>	# <b>F</b>	<b>Release:</b>	# Rel-5
	Use <u>one</u> of the following categories:		Use <u>one</u> of the following releases:
	<b>F</b> (correction)		2 (GSM Phase 2)
	<b>A</b> (corresponds to a correction in an earlier release)		R96 (Release 1996)
	<b>B</b> (addition of feature),		R97 (Release 1997)
	<b>C</b> (functional modification of feature)		R98 (Release 1998)
	<b>D</b> (editorial modification)		R99 (Release 1999)
	Detailed explanations of the above categories can be found in 3GPP <a href="#">TR 21.900</a> .		Rel-4 (Release 4)
			Rel-5 (Release 5)
			Rel-6 (Release 6)

<b>Reason for change:</b>	# The Figure 30J: "Information Exchange Failure procedure, Successful Operation" shows that the INFORMATION EXCHANGE FAILURE INDICATION message is sent from Node B to CRNC. But RNSAP should talk about RNCs and not about Node Bs.
<b>Summary of change:</b>	# The Figure 30J: "Information Exchange Failure procedure, Successful Operation" is updated so that the INFORMATION EXCHANGE FAILURE INDICATION message is sent from RNC <sub>2</sub> to RNC <sub>1</sub> as indicated in the procedure text.
<b>Consequences if not approved:</b>	# If this CR is not approved, incorrect figure for the INFORMATION EXCHANGE FAILURE INDICATION message is remaining.  Impact Analysis: Impact assessment towards the previous version of the specification (same release): This CR has isolated impact with the previous version of the specification (same release) because it corrects one figure. This CR has an impact under functional point of view. The impact can be considered isolated because the change affects one function namely INFORMATION EXCHANGE FAILURE.

<b>Clauses affected:</b>	# 8.5.9.2								
<b>Other specs affected:</b>	#								
	<table border="1" style="display: inline-table; border-collapse: collapse;"> <tr> <td style="width: 20px; text-align: center;">Y</td> <td style="width: 20px; text-align: center;">N</td> </tr> <tr> <td style="text-align: center;">#</td> <td style="text-align: center;">X</td> </tr> <tr> <td style="text-align: center;">#</td> <td style="text-align: center;">X</td> </tr> <tr> <td style="text-align: center;">#</td> <td style="text-align: center;">X</td> </tr> </table> Other core specifications # Test specifications # O&M Specifications #	Y	N	#	X	#	X	#	X
Y	N								
#	X								
#	X								
#	X								

**Other comments:** ☹

**How to create CRs using this form:**

Comprehensive information and tips about how to create CRs can be found at <http://www.3gpp.org/specs/CR.htm>.

Below is a brief summary:

- 1) Fill out the above form. The symbols above marked ☹ contain pop-up help information about the field that they are closest to.
- 2) Obtain the latest version for the release of the specification to which the change is proposed. Use the MS Word "revision marks" feature (also known as "track changes") when making the changes. All 3GPP specifications can be downloaded from the 3GPP server under <ftp://ftp.3gpp.org/specs/> For the latest version, look for the directory name with the latest date e.g. 2001-03 contains the specifications resulting from the March 2001 TSG meetings.
- 3) With "track changes" disabled, paste the entire CR form (use CTRL-A to select it) into the specification just in front of the clause containing the first piece of changed text. Delete those parts of the specification which are not relevant to the change request.

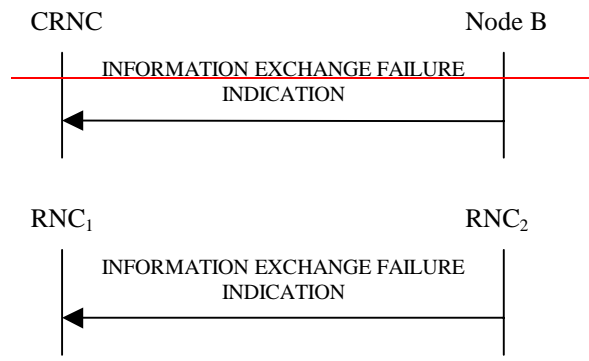
## 8.5.9 Information Exchange Failure

### 8.5.9.1 General

This procedure is used by a RNC to notify another that the information exchange it previously requested using the Information Exchange Initiation can no longer be reported.

This procedure uses the signalling bearer connection for the relevant Distant RNC Context.

### 8.5.9.2 Successful Operation



**Figure 30J: Information Exchange Failure procedure, Successful Operation**

This procedure is initiated with a INFORMATION EXCHANGE FAILURE INDICATION message, sent from the RNC<sub>2</sub> to the RNC<sub>1</sub>, to inform the RNC<sub>1</sub> that information previously requested by the Information Exchange Initiation procedure can no longer be reported. The RNC<sub>2</sub> shall include in the INFORMATION EXCHANGE FAILURE INDICATION message the *Information Exchange ID* IE set to the same value provided by the RNC<sub>1</sub> when initiating the information exchange with the Information Exchange Initiation procedure, and the RNC<sub>2</sub> shall include the *Cause* IE set to an appropriate value.

Typical cause values are as follows:

#### **Radio Network Layer Cause:**

Information temporarily not available.

#### 8.5.9.2.1 Successful Operation for lur-g

The RNC<sub>1</sub>/BSS<sub>1</sub> and RNC<sub>2</sub>/BSS<sub>2</sub> shall use the Information Exchange Failure procedure as specified in section 8.5.9.2.

## CHANGE REQUEST

# 25.423 CR 827 # rev - # Current version: 5.5.0 #

For [HELP](#) on using this form, see bottom of this page or look at the pop-up text over the # symbols.

**Proposed change affects:** UICC apps  ME  Radio Access Network  Core Network

<b>Title:</b>	# Alignment of tables in Information Exchange Initiation procedure description		
<b>Source:</b>	# RAN WG3		
<b>Work item code:</b>	# TEI5	<b>Date:</b>	# 19/05/2003
<b>Category:</b>	# <b>F</b>	<b>Release:</b>	# Rel-5
	Use <u>one</u> of the following categories:		Use <u>one</u> of the following releases:
	<b>F</b> (correction)	<b>2</b> (GSM Phase 2)	
	<b>A</b> (corresponds to a correction in an earlier release)	<b>R96</b> (Release 1996)	
	<b>B</b> (addition of feature),	<b>R97</b> (Release 1997)	
	<b>C</b> (functional modification of feature)	<b>R98</b> (Release 1998)	
	<b>D</b> (editorial modification)	<b>R99</b> (Release 1999)	
	Detailed explanations of the above categories can be found in 3GPP <a href="#">TR 21.900</a> .		<b>Rel-4</b> (Release 4)
			<b>Rel-5</b> (Release 5)
			<b>Rel-6</b> (Release 6)

<b>Reason for change:</b>	# According to the description, the cell capacity class is missing in table x. Table 7 should be aligned with table x.
<b>Summary of change:</b>	# Completion of the tables in Information Exchange Initiation procedure.
<b>Consequences if not approved:</b>	# The tables in the specification would remain inconsistent.  Impact Analysis: Impact assessment towards the previous version of the specification (same release): This CR has isolated impact with the previous version of the specification (same release) because it just aligns tables to the description. This CR has an impact on the functional point of view. The impact can be considered isolated because the change affects one function namely abnormal condition for Information Exchange Initiation procedure.

<b>Clauses affected:</b>	# 8.5.6.4										
<b>Other specs affected:</b>	<table border="1" style="display: inline-table; border-collapse: collapse; text-align: center;"> <tr> <td style="width: 20px;">Y</td> <td style="width: 20px;">N</td> </tr> <tr> <td style="width: 20px;">#</td> <td style="width: 20px;">X</td> </tr> <tr> <td style="width: 20px;">#</td> <td style="width: 20px;">X</td> </tr> <tr> <td style="width: 20px;">#</td> <td style="width: 20px;">X</td> </tr> </table>	Y	N	#	X	#	X	#	X	Other core specifications	#
Y	N										
#	X										
#	X										
#	X										
		Test specifications									
		O&M Specifications									
<b>Other comments:</b>	#										

### **How to create CRs using this form:**

Comprehensive information and tips about how to create CRs can be found at <http://www.3gpp.org/specs/CR.htm>. Below is a brief summary:

- 1) Fill out the above form. The symbols above marked ⌘ contain pop-up help information about the field that they are closest to.
- 2) Obtain the latest version for the release of the specification to which the change is proposed. Use the MS Word "revision marks" feature (also known as "track changes") when making the changes. All 3GPP specifications can be downloaded from the 3GPP server under <ftp://ftp.3gpp.org/specs/> For the latest version, look for the directory name with the latest date e.g. 2001-03 contains the specifications resulting from the March 2001 TSG meetings.
- 3) With "track changes" disabled, paste the entire CR form (use CTRL-A to select it) into the specification just in front of the clause containing the first piece of changed text. Delete those parts of the specification which are not relevant to the change request.

8.5.6.4 Abnormal Conditions

-If the *Information Report Characteristics* IE is set to "On Modification", and the *Information Type Item* IE is set to "DGPS Corrections", but the *Information Threshold* IE is not received in the INFORMATION EXCHANGE INITIATION REQUEST message, the RNC<sub>2</sub> shall reject the Information Exchange Initiation procedure and shall send the INFORMATION EXCHANGE INITIATION FAILURE message-.

The allowed combinations of the Information type and Information Report Characteristics type are shown in the table below marked with "X". For not allowed combinations, the RNC<sub>2</sub> shall reject the Information Exchange Initiation procedure using the INFORMATION EXCHANGE INITIATION FAILURE message.

**Table 6a: Allowed Information Type and Information Report Characteristics type combinations**

Type	Information Report Characteristics Type		
	On Demand	Periodic	On Modification
UTRAN Access Point Position with Altitude Information	X		
UTRAN Access Point Position	X		
IPDL Parameters	X	X	X
GPS Information	X	X	X
DGPS Corrections	X	X	X
GPS RX Pos	X		
SFN-SFN Measurement Reference Point Position	X		
Cell Capacity Class	X		X

8.5.6.4.1 Abnormal Conditions for Iur-g

The information types that can be requested on the Iur and Iur-g interfaces are shown in the table below marked with "X". For information types that are not applicable on the Iur-g interface, the BSS shall reject the Information Exchange Initiation procedure-.

**Table 7: Allowed Information types on Iur and Iur-g interfaces**

Information Type	Interface	
	Iur	Iur-g
<a href="#">UTRAN Access Point Position with Altitude Information</a>	X	
<a href="#">UTRAN Access Point Position</a>	X	
IPDL Parameters	X	
DGPS Corrections	X	
GPS Information	X	
<a href="#">GPS RX Pos</a>	X	
<a href="#">SFN-SFN Measurement Reference Point Position</a>	X	
Cell Capacity Class	X	X

/\* partly omitted \*/