

TSG-RAN meeting #4
Miami, Florida

TSGRP#4(99)344

Revision marks show the changes based on decisions of the last meeting RAN WG3 meeting. These changes have not yet been approved in RAN WG3

Agenda:

Source: Editor (Ericsson)

Title: 25.415: Iu Interface UTRAN-CN User Plane Protocols, Version 0.1.3

The 3GPP logo is displayed in a large, bold, blue serif font in the top right corner of the page. The logo consists of the characters '3GPP' in a stylized, blocky font.

This page is left intentionally blank

TS RAN 25.415 V0.1.32 (1999-065)

Technical Specification

**3rd Generation Partnership Project (3GPP);
Technical Specification Group (TSG) RAN
lu Interface CN-UTRAN User Plane Protocols**

UMTS 25.415

3GPP



UMTS 25.415

(25.415.PDF)

Keywords

<keyword[, keyword]>

3GPP

Postal address

Office address

Internet

secretariat@3gpp.org
Individual copies of this deliverable
can be downloaded from
<http://www.3gpp.org>

Copyright Notification

No part may be reproduced except as authorized by written permission.
The copyright and the foregoing restriction extend to reproduction in all media.

©
All rights reserved.

Contents

Intellectual Property Rights	7
Foreword	7
1 Scope	8
2 References	8
3 Definitions, symbols and abbreviations	8
3.1 Definitions	8
3.2 Symbols	9
3.3 Abbreviations	9
3.4 Concepts	9
4 General	9
5 PSTN/ISDN Domain	10
5.1 General	10
5.1.1 Protocol Architecture	10
5.1.2 Interfaces of the Iu CS UP protocol layer	10
5.2 Iu CS UP Protocol layer Services	11
5.3 Services Expected from the UP Data Transport layer	11
5.4 Functions of the Iu CS UP Protocol Layer	11
5.5 Elementary procedures	13
5.5.1 Initialisation procedure	13
5.6 Primitives used by the Iu CS UP Protocol Layer	14
5.6.1 Primitives towards the upper layers at the CS-RL-SAP	14
5.6.2 Primitives towards the transport layers	16
5.7 Elements for Iu CS UP communication	17
5.7.1 Frame Format and content definition	17
5.7.2 Frame coding	18
5.7.3 Timers	18
5.8 Handling of unknown, unforeseen and erroneous protocol data	18
6 IP Domain	18
6.1 General	18
6.1.1 Protocol Architecture	18
7 Annex A (Normative)	19
8 Annex B (Informative) Document Stability Assessment Table	19
9 History	23
Intellectual Property Rights	7
Foreword	7
1 Scope	8
2 References	8
3 Definitions, symbols and abbreviations	8
3.1 Definitions	8
3.2 Symbols	8
3.3 Abbreviations	8
3.4 Concepts	9
3.5 25.415 specification status	9
4 General	9
5 PSTN/ISDN Domain	9
5.1 General	9

5.1.1	Protocol Architecture	9
5.1.2	Interfaces of the Iu CS UP protocol layer	10
5.2	Iu CS UP Protocol layer Services	11
5.3	Services Expected from the UP Data Transport layer	11
5.4	Functions of the Iu CS UP Protocol Layer	11
5.5	Elementary procedures	13
5.6	Primitives used by the Iu CS UP Protocol Layer	13
5.6.1	Primitives towards the upper layers	13
5.6.2	Primitives towards the transport layers	13
5.7	Elements for Iu CS UP communication	13
5.7.1	Frame Format and content definition	13
5.7.2	Frame coding	14
5.7.3	Timers	14
5.8	Handling of unknown, unforeseen and erroneous protocol data	14
6	IP Domain	14
6.1	General	14
6.1.1	Protocol Architecture	14
7	Annex A (Normative)	16
8	Appendix A (Informative)	16
8.1	Elements for Iu PS UP communication	16
8.1.1	GTP U Header format and content definition	16
9	History	19

Intellectual Property Rights

Foreword

This Technical Specification has been produced by the 3rd Generation Partnership Project, Technical Specification Group RAN WG3.

The contents of this TS may be subject to continuing work within the 3GPP and may change following formal TSG approval. Should the TSG modify the contents of this TS, it will be re-released with an identifying change of release date and an increase in version number as follows:

Version m.t.e

where:

- m indicates [major version number]
- x the second digit is incremented for all changes of substance, i.e. technical enhancements, corrections, updates, etc.
- y the third digit is incremented when editorial only changes have been incorporated into the specification.

Scope

This Technical Specification defines the protocols being used to transport and control over the Iu interface, the Iu User Data Streams.

References

The following documents contain provisions, which, through reference in this text, constitute provisions of the present document.

- References are either specific (identified by date of publication, edition number, version number, etc.) or non-specific.
- For a specific reference, subsequent revisions do not apply.
- For a non-specific reference, the latest version applies.
- A non-specific reference to an ETS shall also be taken to refer to later versions published as an EN with the same number.

- [1] UTRAN Architecture
- [2] UMTS 25.413 RANAP protocol
- [3] UMTS 25.414, 3rd Generation Partnership Project (3GPP) Technical Specification Group (TSG) RAN; Iu Interface Data Transport and Transport Signalling
- [4] UMTS 23.10, UMTS Access Stratum, services and functions
- [5] [ITU-T Recommendation I.363.2 \(1997\) - B-ISDN ATM Adaptation Layer type 2 specification](#)
- [6] [ITU-T Recommendation I.366.1 \(1998\) - Segmentation and reassembly service specific convergence sublayer for the AAL type 2](#)

Definitions, symbols and abbreviations

Definitions

For the purposes of the present document, the following terms and definitions apply.

~~Note of the editor: The term Non Access Stratum Data Streams is used in place of a better term to identify the data streams coming from the Iu UP CS protocol upper layers. Contributions are invited to refine this terminology.~~

~~The following definition is an editor's proposal.~~

Non Access Stratum Data Streams:

Non Access Stratum Data Streams is a generic term to identify in the CN and the Terminal domains, these data streams exchanged at the Dedicated Service Access Points between the Non Access Stratum and the Access Stratum.

Symbols

For the purposes of the present document, the following symbols apply:

Abbreviations

AS: Access Stratum
 CN: Core Network
 CS: Circuit Switched
~~GTP U: GPRS Tunnelling Protocol User part~~
 NAS: Non Access Stratum
 PDU: Protocol Data Unit
 PS: Packet Switched
 RAB: Radio Access Bearer
 RANAP: Radio Access Network Application Part
 UP: User Plane

Concepts

~~Co-ordinated Radio Access Bearers:~~

~~Note of the editor: A proposal of a concept will be made by the editor and refined on the e-mail reflector.~~

~~3.525.415 specification status~~

Section	Status	Comments
1	In progress	
2	In progress	
3	In progress	
4	In progress	
5	In progress	
6	In progress	
7	In progress	
8	In progress	To be moved to another specification.

General

PSTN/ISDN Domain

General

Protocol Architecture

From an architectural perspective, the Iu CS UP protocol layer is present in the Iu User plane towards the CS domain at the interface access points. The following figure illustrates the logical placement of the Iu CS UP protocol layer and the placement of the Data Streams sources outside of the Access Stratum.

The two strata communicate through a Service Access Point for Non Access Stratum (NAS) Data Streams. There can be one or several data streams towards one Iu CS UP protocol instance. These non-access stratum data streams need to be co-ordinated in the Non-Access Stratum.

Editor's Proposal: In order to keep independencies between the Radio Network and Transport Network layers specifications, the following figure no longer details the Transport Network User plane protocols, specified in other documents and generically refer only to as User Plane Data Bearers protocols in the Transport Layer.

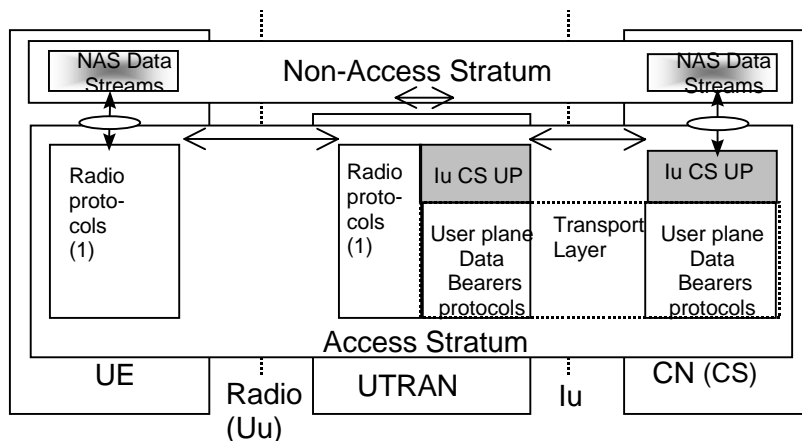


Figure 1: Iu CS UP protocol layer occurrence in UTRAN overall architecture

Interfaces of the Iu CS UP protocol layer

As part of the Access Stratum responsibility, the Iu CS UP protocol layer provides the services and functions that are necessary to handle non access stratum data streams. The Iu CS UP protocol layer is providing these services to the UP upper layers in the CS CN domain through a Dedicated Service Access Point used for Information Transfer as specified in [4].

The Iu CS UP protocol layer is using services of the Transport layers in order to transfer the Iu UP PDUs over the Iu interface.

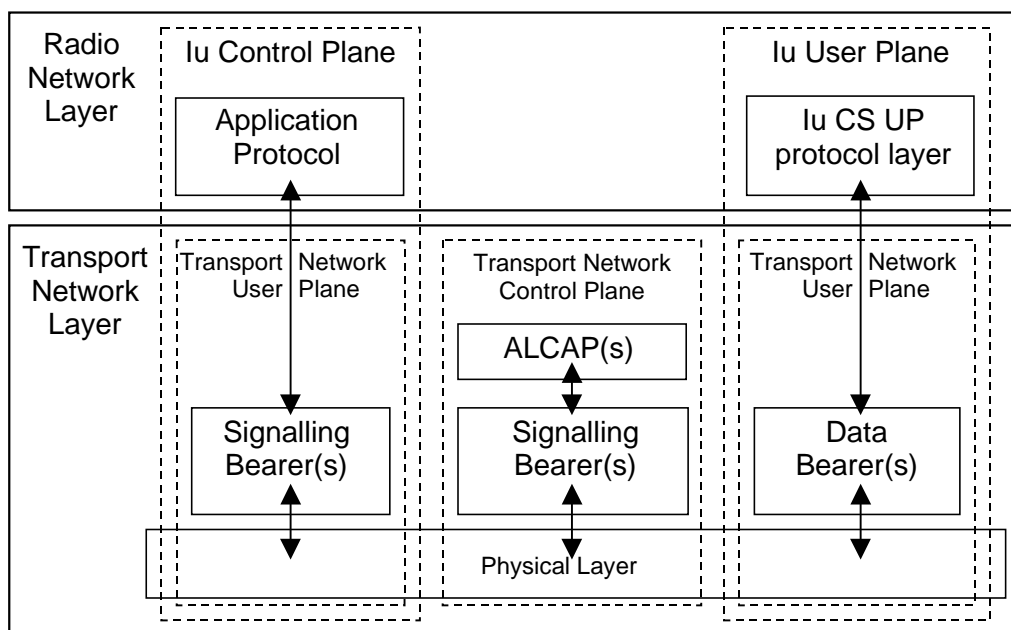


Figure 2: Iu CS UP protocol layer interfaces

Iu CS UP Protocol layer Services

Services Expected from the UP Data Transport layer

Functions of the Iu CS UP Protocol Layer

The Iu CS UP CS protocol layer is made of a number of functions such as Procedure Control functions, Frame Handler function and Non Access Stratum specific functions.

Frame Handler function: This function is responsible for framing and de-framing the different parts of an Iu CS UP protocol frame. This function takes the different part of the Iu CS UP protocol frame and set the control part field to the correct values. It also ensures that the frame control part is semantically correct. This function is responsible for interacting with the Transport layers. This function is also responsible for the CRC check of the Iu CS UP frame header.

Procedure Control functions: This set of functions offers the control of a number of procedures handled at the Iu UP CS protocol level. These functions are responsible for the procedure control part of the Iu CS UP frames.

Namely, these procedures are:

- **RAB Format selection (FFS):** is the procedure which controls over Iu CS UP the maximum rate among the RAB Formats negotiated for the established RAB service. The function controlling this procedure interacts with functions outside of the Iu CS UP protocol layer.
- **Initialisation:** is the procedure which controls the exchange of initialisation information that may be required for certain RAB such as Speech. Such information can contain the RAB Format Set to be used until termination of the connection or until the next initialisation procedure.
- **Time Alignment (FFS):** is the procedure that controls the information exchanged over the Iu related to the sending time of Iu CS UP frames. The function controlling this procedure interacts with functions outside of the Iu CS UP protocol layer.
- **Handling of Abnormal Event:** is the procedure that controls the information exchanged over the Iu related to detection of a fault situation. The function controlling this procedure interacts with functions outside of the Iu CS UP protocol layer.

Non Access Stratum Data Streams specific function(s): These functions are responsible for a “limited” manipulation” of the payload and the consistency check of the frame number. If a frame loss is detected due a gap in the sequence of the received frame numbers, this shall be reported to the procedure control function. These functions are responsible for the CRC check and calculation of the lu UP frame payload part. These functions interact with the upper layers through a SAP by exchanging lu data stream blocks of lu UP frame payload.

Note: The following paragraph is FFS

These functions interact with the procedure control function for handling the RAB format selection procedure data (RFN, lu Data Stream Block size, etc.).

These functions may provide service access to the upper layers for the procedure control functions.

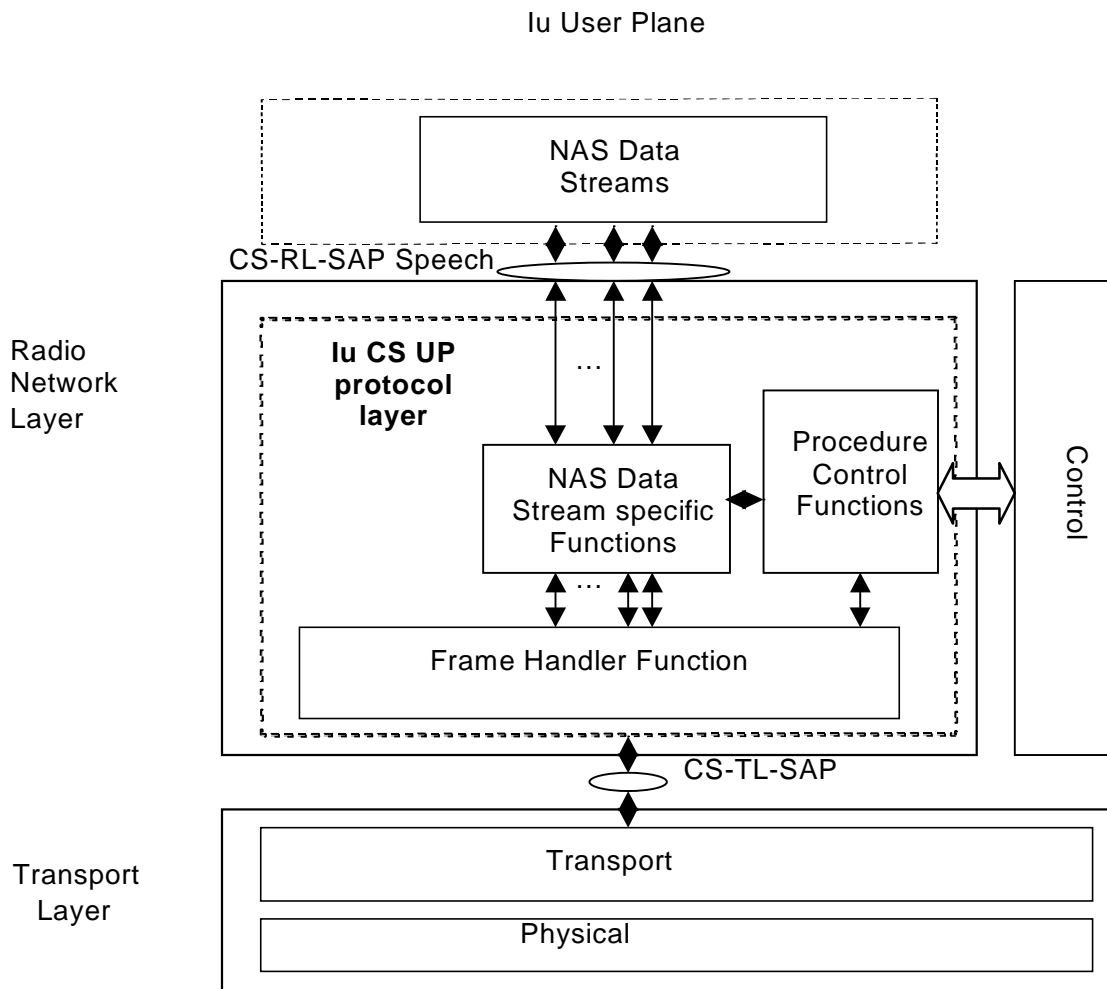


Figure 3: Functional model of the lu CS UP protocol layer

Elementary procedures

Initialisation procedure

Note: It is FFS whether this procedure is to be merged with a procedure used in the communication phase.

The initialisation procedure is always controlled by the entity in charge of establishing the Radio Network Layer User Plane i.e. SRNS.

The initialisation procedure is invoked whenever indicated by the Iu CS UP Procedure Control function e.g. as a result of a relocation or at RAB establishment over Iu.

This procedure is mandatory for a speech RAB.

Note: Whether this procedure can also be used for CS Data is FFS.

The Iu CS UP procedure control function allocates an indicator to each RAB sub-Flow Combination. The association of indicators to RAB Flow Combinations is valid until a new initialisation procedure is performed or the connection is terminated.

The procedure control function may also generate additional Iu CS UP protocol parameters necessary for the RAB service to operate properly over Iu.

To each RAB sub-Flow combination is associated the RAB sub-Flow Combination SDU size. The list of RAB Flow Combination Indicators and their respective SDU sizes constitutes the RAB sub-Flow Combination set passed over the Iu CS UP.

Note: It is FFS whether the SDU size of the RAB sub Flow Combination is sent during this procedure or instead the SDU size of every RAB sub Flow of a each RAB sub Flow Combination.

The first RAB sub-Flow Combination proposed in the list of RAB sub-Flow Combination indicates the initial RAB sub-Flow Combination i.e. the first RAB sub-Flow Combination to be used when starting the communication phase.

The complete set of information is framed by the Iu CS UP Frame Handler function and transferred in an Iu CS UP **Control (FFS)** frame.

Upon reception of a **control (FFS)** frame indicating that an initialisation control procedure is active in the peer Iu CS UP entity, the Iu CS UP protocol layer stores the RAB sub-Flow Combination set to be used by the Control procedure function. It also relays to the upper layer through its CS-RL-SAP, the indication of the initial RAB sub-Flow Combination.

Consequently, when in the communication phase (as indicated by internal functions in the Radio Network layer), the frame transmission starts in uplink and downlink in the initial RAB Flow Combination.

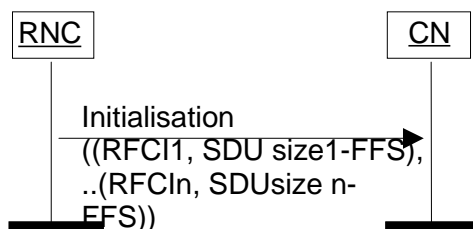


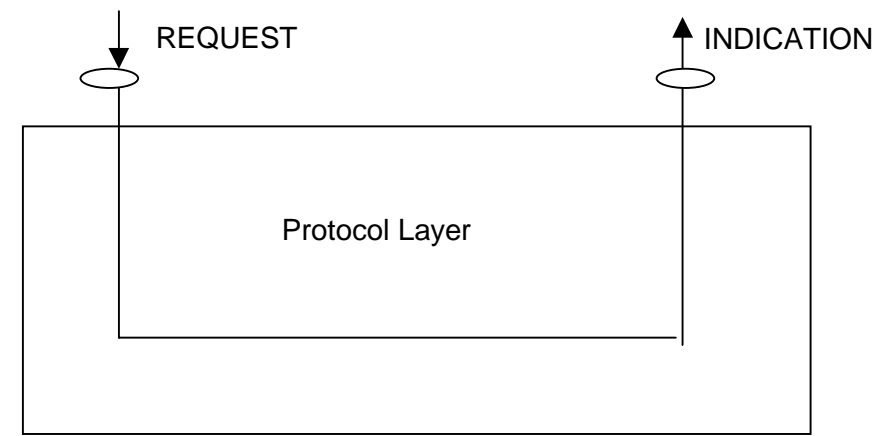
Figure x. Initialisation of Iu CS UP for n RFCs

Note of the editor: The need for an acknowledgement frame (and time supervision) and a repetition mechanism is FFS.

Note of the editor: The case where an SRNS receives an Iu control (FFS) frame indicating that an initialisation procedure is active at the other end of the Iu CS UP could be related to a TFO negotiation. How TFO protocol and codec negotiation is performed is FFS.

Primitives used by the lu CS UP Protocol Layer

The principle illustrated by the figure below is used for modelling the primitives towards the protocol layer:



Primitives towards the upper layers at the CS-RL-SAP

The lu CS UP protocol layer interacts with other layers as illustrated in figure 3 of [1]. The interactions with the upper layers are shown in terms of primitives where the primitives represent the logical exchange of information and control between the upper layer and the lu CS UP protocol layer. They do not specify or constraint implementations.

For the lu UP protocol layer, the following primitives are defined:

- lu-UP-DATA
- lu-UP-STATUS

lu NAS Data Stream DU is a generic term referring to either speech or data stream data units.

Table 1. Iu UP protocol layer service primitives

<u>Primitive</u>	<u>Type</u>	<u>Parameters</u>	<u>Comments</u>
Iu-UP-DATA	Request	Iu-UP-payload	
		Iu-UP-control	Abnormal Event
			<i>RFC request (FFS. Note 1)</i>
	Indication	Iu-UP-payload	
		Iu-UP-control	<i>RFC Request (FFS. Note 2)</i>
			RFC Indication
		Abnormal Event	
		<i>Time Alignment (FFS Note 3)</i>	
Iu-UP-Status	Indication	Iu-UP-Control	Abnormal Event
			Initialisation
	Request	Iu-UP-Control	Abnormal Event

Iu-UP-DATA-REQUEST

This primitive is used as a request from the upper layer Iu NAS Data Stream entity to send a RAB SDU on the established transport connection.

When an abnormal condition like a corrupted is detected, then this primitive includes Control Information. This primitive may also include abnormal event control information related to frame(s) sent earlier by the Iu CS DS peer entity.

Note 1: This information is related to maximum rate control. It is therefore FFS.

The Iu CS UP Frame protocol layer forms the Iu UP data frame, the Iu Data Stream DU being the payload of the Iu UP frame, and transfers the frame by means of the lower layer services.

Iu-UP-DATA-INDICATION

This primitive is used as an indication to the upper layer entity to pass the Iu NAS Data Stream User Plane information of a received Iu CS UP frame.

This primitive normally includes also the RFCI of the payload information included in the primitive. If it does not include the RFCI, this shall be interpreted as if no RAB sub-flow combination change occurred since the last received RFCI.

This primitive may also include a request for a RFC change. This corresponds to the case where a change of RFC needs to be applied to the frames sent in the opposite direction.

Note 2: This information is related to maximum rate control. It is therefore FFS.

This primitive may also include an abnormal event information aiming at informing the upper layers of a faulty situation that may relate to the payload included in the primitive or to frame(s) sent earlier by the Iu CS DS receiving entity.

Note 3: Time Alignment is FFS.

Iu-UP-STATUS

This primitive is used to report to the upper layer entity that a fault has been detected. The information concerning that fault is characterised by the Abnormal event information passed to the upper layer.

This primitive is also used in the context of the initialisation control procedure to pass to the upper lu CS DS layer e.g. the initial RFC to be used in the communication phase.

Note: It is assumed here that no payload is transferred with the initialisation frame. Whether an acknowledgement frame is necessary is FFS.

Primitives towards the transport layers

ATM/AAL2 Transport layer

When the lu CS UP protocol layer uses the services of an ATM/AAL2 transport, it uses an established AAL2 connection for transferring frames between the peer CS-TL-SAPs at both end of the lu User plane access points. The Transport Network Control Plane over lu handles the signalling to establish and release the AAL2 call connections.

AAL2 Service Primitives used by the lu UP protocol

AAL2 services and primitives used at the Service Access Point from the AAL2 layer are shown in the following table:

Table 2. AAL2 primitives and parameters

<u>Primitive</u>	<u>Type</u>	<u>Parameters</u>	<u>Comments</u>
AAL-UNITDATA	Request	AAL-INFO	1-45 Octets of lu CS UP protocol data
		AAL-UUI	Not used (Note 1)
AAL-UNITDATA	Indication	AAL-INFO	1-45 Octets of lu CS UP protocol data
		AAL-UUI	Not used (Note 1)

Note 1 The setting of this field must be defined. It is left FFS.

The primitives of Table 2 are the standard primitives of [5]. These primitives are intended to be used in the lu UP.

For the purpose of the lu CS UP protocol, the AAL2 layer is limited to the Common Part Sublayer i.e. no Service Specific Convergence Sublayer is required.

Note of the editor: The SSCS SAAR has not been proposed so far because it is not necessary for low bandwidth speech such as AMR. This proposal will be revisited when CS Data will be introduced in the lu CS User Plane.

Elements for lu CS UP communication

Frame Format and content definition

The following shows the lu frame structure of the lu CS UP protocol at the SAP towards the transport layers (CS-TL-SAP):

Bits													
7	6	5	4	3	2	1	0						
This field is FFS Frame Type				Frame Number				M	1	Bytes	Frame Control Part		
PME	Procedure Control Bitmap						M	2	Frame Procedure Control Part				
PCE	This field is FFS RAB Format Selection Control Field						O	3					
PCE	This field is FFS Time Alignment Control Field						O	4					
PCE	Abnormal Event Control Field						O	5					
PCE	Initialization Control Field						O	6					
Frame Payload Check Sum				Frame Header Check Sum				M	7	Frame Check Sum Part			
Payload Fields								C	8-n	Frame Payload part			

Figure 4: lu CS UP Frame Format

C: Conditional
M: Mandatory
O: Optional

The lu UP protocol frames are made of four parts:

- 1) lu UP Frame Control part
- 2) lu UP Frame Procedure Control part
- 3) lu UP Frame Check Sum
- 4) lu UP Frame Payload part

The lu UP Frame Control Part, the lu UP Frame Procedure Control Part and the lu UP Frame Check Sum constitute the lu UP Frame Header.

1.1.1 Frame coding

1.1.2 Timers

1.2 Handling of unknown, unforeseen and erroneous protocol data

2 IP Domain

2.1 General

~~Note of the editor: At the RAN WG3#3 meeting, it has been decided that the GTP-U protocol belongs to the Transport Network Layer user plane. As a consequence, statements referring to the multiplexing layer on top of the common layer 2 resources and the section addressing the buffer management and no flow control have been moved to 25.414.~~

2.1.1 Protocol Architecture

~~Editor's Proposal: The content of this section is proposed by the editor to clarify the logical placement of the Iu-PS-UP layer in the overall UTRAN architecture.~~

From an architectural perspective, the Iu-PS-UP layer is present in the Iu User plane towards the PS domain at the Iu interface access points.

The following figure illustrates the logical placement of the Iu-PS-UP protocol layer and the placement of the Data Streams sources outside of the Access Stratum.

The two strata communicate through a Service Access Point for Non Access Stratum (NAS) Data Streams transfer.

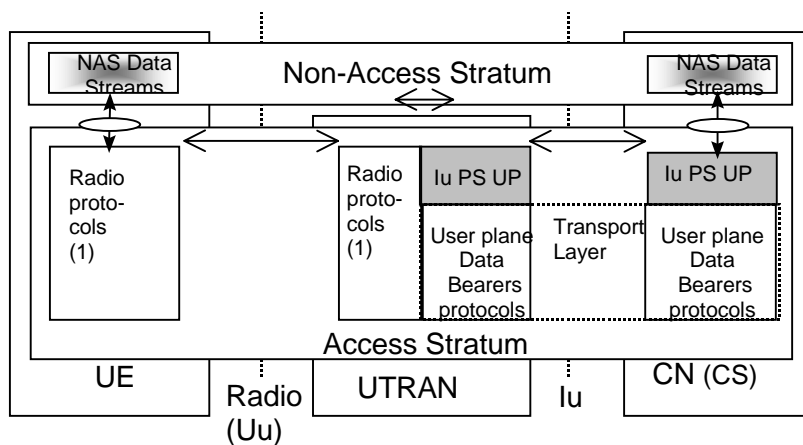


Figure 5: Iu PS UP protocol layer occurrence in UTRAN overall architecture

~~The Iu-PS-UP layer is a transparent layer. This layer does not offer any services than relaying PDUs.~~

~~Whether the Iu PS UP protocol layer is transparent only is FFS.~~

3 Annex A (Normative)

4 Annex B (Informative) Document Stability Assessment Table

<u>Section</u>	<u>Content missing</u>	<u>Incomplete</u>	<u>Restructuring needed</u>	<u>Checking needed</u>	<u>Editorial work required</u>	<u>Finalisation needed</u>	<u>Almost stable</u>	<u>Stable</u>
<u>1</u>		√						
<u>2</u>		√						
<u>3</u>		√						
<u>4</u>	√							
<u>5</u>		√	√					
<u>6</u>		√	√					
<u>7</u>								
<u>8</u>								

~~8 Appendix A (Informative)~~

~~8.1 Elements for Lu PS UP communication~~

~~8.1.1 GTP-U Header format and content definition~~

Bits								7	6	5	4	3	2	1	0
Version		PT	Reserved												
Message Type								1	Bytes						
Spare				Length				2							
Length								3							
Sequence Number								4							
Sequence Number								5							
Flow Label (1 st Byte)								6							
Flow Label (2 nd Byte)								7							
Flow Label (3 rd Byte)								8							
Flow Label (4 th Byte)								9							
Flow Label (4 th Byte)								10							

Figure 8: Iu PS UP GTP-U protocol header

8.1.1.1 Version

The Version field is used to separate different versions of the GTP protocol.

Note: It needs to be considered whether a new protocol discriminator is required and if not how version handling is performed.

8.1.1.2 PT (Payload Type)

Bit 5 of the first octet is used as a protocol discriminator. It is used to separate the GTP-U protocol from a protocol that is used for charging purposes in the UMTS core network.

8.1.1.3 Reserved

These bits are reserved for future use. Their use is FFS.

They shall be set to '1' by the sending side and shall not be evaluated by the receiving side.

This applies to bits 3-0 of octet 1.

Note: The usage of the reserved field in protocol messages needs to be clarified.

8.1.1.4 Message Type

The Message Type field indicates the type of the GTP-U message.

This is needed to indicate whether the message consists of transparent user data (T-PDU) or path management messages.

Note: The usage of the reserved values in the message type needs to be clarified.

Message Type Value	Message
0	For future use. Shall not be sent. If received, shall be treated as an unknown message.
1	Echo Request
2	Echo Response
3	Version Not Supported
4 to 191	Reserved
192 to 254	For future use. Shall not be sent. If received, shall be treated as an unknown message.
255	T-PDU

8.1.1.5 Length

The Length field indicates the length in octets of the GTP-U message excluding the GTP-U header. Bit 2 of octet 3 is the most significant bit and bit 0 of octet 4 is the least significant bit of the length field.

Length field is needed to enable volume based charging (in xGSN).

8.1.1.6 Spare '1s'

These unused bits shall be set to '1' by the sending side and shall not be evaluated by the receiving side. This applies to bits 7-3 of octet 3.

8.1.1.7 Sequence Number

The Sequence Number field is a transaction identity for signalling messages and an increasing sequence number for tunnelled T-PDUs.

For user data, based on the received and expected sequence number values, the receiving node may decide whether or not to discard the received PDUs. Alternatively, the receiving node shall reorder the incoming PDUs in sequence if the Reordering Information in the application part control plane indicates that Reordering is required.

Note: The aspects related to initialisation and synchronisation of the sequence number are FFS.

8.1.1.8 Flow Label

The Flow Label field identifies unambiguously a GTP-U tunnel. The Flow Label is negotiated through RANAP dialogue during the setup phase of a GTP-U tunnel.

The SGSN assigns the Flow Label to be used for upstream traffic and the RNC assigns the Flow Label to be used for downstream traffic.

The following describes how the Flow Label is assigned:

In the control plane, the SGSN sends to the RNC a node IP address (Transport Layer address) and an upstream Flow Label to be used for the user plane data. The Flow Label corresponds to the Binding Identity and identifies a GTP-U tunnel.

The RNC responds in the control plane with an IP address (Transport Layer address) and a downstream Flow Label. The Flow Label corresponds to the Binding Identity in the RAB Assignment Complete message.

For signalling messages, the Flow Label is set to 0.

Similar procedures will be used for SRNS relocation and handover.

8.1.1.9 Echo Request

This message is used for Path (UDP layer) management. It is used for one peer to verify that the corresponding peer is still operational. Echo Request messages may be sent for each path in use. The node shall be prepared to receive an Echo Request message at any time and reply with an Echo Response message. When and how often an Echo Request message may be sent is implementation specific but an Echo Request shall not be sent more often than every 60 seconds on each path.

The private extension is optional.

8.1.1.10 Echo Response

This message is sent as a response to the Echo Request message. The private extension is optional. The Recovery field is required.

8.1.1.11 Version not supported

This message contains only the GTP-U header and indicates the latest GTP version that the GTP-U entity on the identified UDP/IP address can support.

If a receiving node receives a GTP message of an unsupported version, that node shall return a Version not Supported message indicating in the Version field of the GTP-U header the latest GTP-U version that that node supports.

5 History

Document history		
Edition x		Publication
0.0.1	Feb 1999	First draft
0.0.2	March 1999	Revised following RAN WG3#2 meeting: <ul style="list-style-type: none"> - TSG SA S2-99080: Iu UP instances - TSG RAN WG3#2 R3-99195
0.1.0	April 1999	Prepared for the RAN WG#3 meeting. <ul style="list-style-type: none"> - Document noted TSG SA S2-99080: Iu UP instances
0.1.1	May 1999	Revised following RAN WG3#3 meeting <ul style="list-style-type: none"> - Editorial additions: abbreviations, corrected references - TSG R3 (99) 281: incorporation of the proposals, inclusion of the frame format, RAB Format Selection and Time Alignment FFS - TSG R3 (99) 368: alignment of the 281 proposals with the co ordinated data streams concepts of 368. - Inclusion of detailed comments of the Iu SWG on TSG R3 (99) 281 - Note: <ul style="list-style-type: none"> - <i>TSG R3 (99) 257: provisions for load sharing on Iu between RNC and CN PS, moved to 25.414</i> - <i>TSG R3 (99) 276: incorporation of the two parts of proposal 1 (i.e. resulting in creation of appendix A): moved to 25.414</i>
0.1.2	May 1999	Revised by editor according to WG3#3 closing plenary meeting recommendations <ul style="list-style-type: none"> -Include Appendix A -Include Section 3.4.: Specification status
0.1.3	June 1999	Revised following RAN WG3#4 meeting. <ul style="list-style-type: none"> - Removal of the temporary appendix containing the GTP-U agreed proposal TSG R3 (99) 276. Proposed in Liaison TSGR3#4 (99) 569 - Move the specification status atble to Annex B. Align layout with 25.401 editors proposal - Include TSGR3-99458, TSG R3-99459 - Add reference to AAL2 ITU specifications
Rapporteur for 3GPP RAN 25.415 is:		

Alain G. Maupin
Ericsson Radio Systems

Tel. : +46 8 404 4379

Fax : +46 8 404 3597

Email : alain.maupin@era.ericsson.se

This document is written in Microsoft Word version 7. 0/97.