

Agenda Item:

Source: T-Mobil, Mannesmann Mobilfunk, Vodafone, GSM Association
VPT

Title: Measurement Termination Response

Document for: Discussion

Up to now no response on a measurement termination response message is defined in the NBAP specification. But the termination of some measurements could be necessary to avoid a signalling overflow or an overload of NodeB internal processors. So we have to be sure that the measurement termination message is received by the Node B.

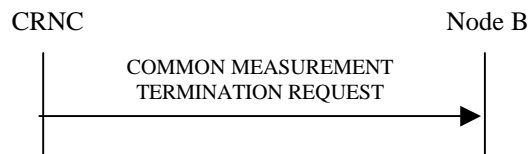
On the other hand it is necessary that the RNC sends a response message on the measurement termination indication message from the Node B. Otherwise, in case of a loss of the indication message, it could happen that the RNC will never recognise that the measurements are terminated (e.g. if the report characteristic is “Event Triggered”).

Because the proposal for the causes covers a non-failure case (i. e. when the Node B has been instructed to terminate) the COMMON MEASUREMENT FAILURE INDICATION message should be renamed to COMMON MEASUREMENT TERMINATION INDICATION.

Therefore the following changes in 25.433 are proposed.

8.1.4.2 Measurement Termination initiated by RNC

For termination of previously requested measurements, the RNC use the following procedure:



Measurement Termination Procedure initiated by RNC

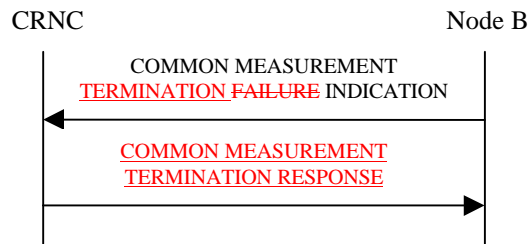
The COMMON MEASUREMENT TERMINATION REQUEST message includes the following information:

- **Measurement Id:** This is the same Id that was used in the request.

As a response on the COMMON MEASUREMENT TERMINATION REQUEST message the Node B has to send a COMMON MEASUREMENT TERMINATION INDICATION message.

8.1.4.3 Measurement Termination initiated by NodeB

For termination of previously requested measurements from NodeB, the NodeB use the following procedure:



Measurement Termination Procedure initiated by NodeB

The COMMON MEASUREMENT ~~FAILURE-TERMINATION~~ INDICATION message includes the following information:

- **Measurement Id:** This is the same Id that was used in the request.
- **Cause:** This states the reason for the termination. *The exact content of this parameter is F.F.S. Following reasons are possible:*
 - *A common measurement termination request from the RNC is received. In this case no additional response from RNC is required.*

The COMMON MEASUREMENT FAILURE RESPONSE includes the following information:

- **Measurement Id:** This is the same Id that was used in the failure indication.

9.1.21 COMMON MEASUREMENT TERMINATION REQUEST by RNC

Information Element	Reference	Type
Message Discriminator		M
Message Type		M
Transaction ID		M
Measurement ID ¹		M

9.1.22 COMMON MEASUREMENT ~~FAILURE~~ INDICATION by Node B

Information Element	Reference	Type
Message Discriminator		M

¹ This is the same measurement ID as that sent in Request message.

Message Type		M
Transaction ID		<u>M</u>
Measurement ID ²		M
<u>Cause</u>		<u>M</u>
<i>A common measurement termination request from the RNC is received</i>		<u>O</u>

9.1.23 Common Measurement Failure Response

<u>Information Element</u>	<u>Reference</u>	<u>Type</u>
<u>Message Discriminator</u>		<u>M</u>
<u>Message Type</u>		<u>M</u>
<u>Transaction ID</u>		<u>M</u>
<u>Measurement ID³</u>		<u>M</u>

Furthermore we propose to add the cause

Ø A common measurement termination request from the RNC is received

to the table “cause value” in the NBAP specification in subchapter 9.4.33.

² This is the same measurement ID as that sent in Request message.

³ This is the same measurement ID as that sent in Request message.