

TSG-RAN Working Group 3 meeting #2
Nynäshamn, Sweden, 15th - 19th March 1999

TSGW3#2(99)113

Agenda Item: 6.1
Source: Editor
Title: S3.23: RNSAP Specification
Document for:

3GPP

TS RAN S3.23 V0.0.24 (1999-024)

Technical Specification

**3rd Generation Partnership Project (3GPP);
Technical Specification Group (TSG) RAN
RNSAP Specification**

[UMTS <spec>]

3GPP

Reference

<Workitem> (<Shortfilename>.PDF)

Keywords

<keyword[, keyword]>

3GPP

Postal address

Office address

Internet

secretariat@3gpp.org
Individual copies of this deliverable
can be downloaded from
<http://www.3gpp.org>

Copyright Notification

No part may be reproduced except as authorized by written permission.
The copyright and the foregoing restriction extend to reproduction in all media.

©
All rights reserved.

Contents

Intellectual Property Rights	97
Foreword	97
1 Scope	97
2 References	97
3 Definitions, symbols and abbreviations	97
3.1 Definitions.....	97
3.2 Symbols.....	108
3.3 Abbreviations	108
4 General.....	108
5 RNSAP Services.....	108
6 Services expected from signalling transport.....	108
7 Functions of RNSAP	108
8 Elementary RNSAP procedures	108
8.1 Radio Link Setup	108
8.2 Radio Link Addition	1240
8.3 Radio Link Deletion.....	1442
8.4 Radio Link Reconfiguration (synchronised)	1442
8.5 Radio Link Reconfiguration (unsynchronised)	1644
8.6 Down Link Code Reconfiguration (ETSI version).....	1845
8.7 Down Link Code Reconfiguration Trigger (TTC/ARIB version)	1946
8.8 Cell/URA Update Indication/SRNS Relocation (ETSI version).....	1947
8.9 Cell/URA Update Indication.Cell/URA Update Indication/SRNS Relocation (TTC/ARIB version).....	2148
8.10 Radio Link Dropped Notification	2249
8.11 Load Indication	2320
8.12 Radio Measurements Reporting	2321
8.13 URA Paging Request	2421
8.14 SRNC Relocation Commit	2422
8.15 Down Link Power Control	2523
8.16 Outer Loop Power Control.....	2623
9 Elements for RNSAP communication	2624
9.1 Message functional definition and content	2624
9.1.1 Message Contents	2725
9.1.2 RADIO LINK SETUP.....	2725
9.1.3 RADIO LINK SETUP RESPONSE.....	2825
9.1.4 RADIO LINK SETUP FAILURE.....	2826
9.1.5 RADIO LINK ADDITION	2826
9.1.6 RADIO LINK ADDITION RESPONSE.....	2826
9.1.7 RADIO LINK ADDITION FAILURE.....	2927
9.1.8 RADIO LINK DELETION	2927
9.1.9 RADIO LINK DELETION RESPONSE	2927
9.1.10 RADIO LINK RECONFIGURATION PREPARE.....	2927
9.1.11 RADIO LINK RECONFIGURATION READY.....	3028
9.1.12 RADIO LINK RECONFIGURATION COMMIT.....	3028
9.1.13 RADIO LINK RECONFIGURATION FAILURE.....	3028
9.1.14 RADIO LINK RECONFIGURATION CANCEL	3128
9.1.15 POWER CONTROL	3128
9.1.16 OUTER LOOP POWER CONTROL	3129
9.1.17 DL USER DATA RETRIEVAL	3129
9.1.18 DL USER DATA RETRIEVAL RESPONSE.....	3129
9.1.19 RNC RELOCATION REQUEST	3129

9.1.20	RRC CONTEXT RETRIEVAL	3229
9.1.21	RRC CONTEXT RETRIEVAL RESPONSE	3229
9.1.22	DL CODE RECONFIGURATION REQUEST	3230
9.1.23	RESET (FFS)	3230
9.1.24	RESET ACKNOWLEDGE (FFS).....	3230
9.1.25	CONFUSION (FFS).....	3230
9.2	Message Format and Information Element Coding.....	3331
9.2.1	Message Identifier	3533
9.2.2	Information Transfer Capability	3634
9.2.3	ATM Address	3634
9.2.4	ATM Binding ID	3634
9.2.5	Cell ID	3634
9.2.6	DCH ID	3634
9.2.7	TFS(for DCH)	3634
9.2.8	TFCS(for DCHs)	3734
9.2.9	Radio Frequency.....	3735
9.2.10	UL Interference level.....	3735
9.2.11	UL scrambling code	3735
9.2.12	UL channelisation code type	3735
9.2.13	No. of UL channelisation code	3735
9.2.14	UL channelisation code ID	3735
9.2.15	DL channelisation code type	3735
9.2.16	No. of Radio Links	3735
9.2.17	Radio Link ID.....	3735
9.2.18	No. of DL channelisation code	3735
9.2.19	DL channelisation code ID	3735
9.2.20	No. of DCHs.....	3735
9.2.21	Neighbor Cell Information	3735
9.2.22	Soft Combination Indicator	3835
9.2.23	Phase Difference.....	3836
9.2.24	Execution Time	3836
9.2.25	Slot Offset	3836
9.2.26	Frame offset.....	3836
9.2.27	Initial DL Power.....	3836
9.2.28	DL Power Range	3836
9.2.29	Target UL Eb/I0	3836
9.2.30	Old URA ID	3836
9.2.31	Old RNTI	3836
9.2.32	DCH QoS	3836
9.2.33	Cause	3836
9.3	Timers	4038
10	Handling of unknown, unforeseen and erroneous protocol data.....	4038
11	Annex A (normative):.....	4038
12	ANNEX B: Iur Parameters List (informative)	4139
13	History	9586
Intellectual Property Rights		
Foreword.....		
1 Scope		
2 References		
3 Definitions, symbols and abbreviations		
3.1	Definitions.....	
3.2	Symbols.....	
3.3	Abbreviations.....	

4	General	
5	RNSAP Services	
6	Services expected from signalling transport	
7	Functions of RNSAP	
8	Elementary RNSAP procedures	
8.1	Radio Link Setup	
8.2	Radio Link Addition	
8.3	Radio Link Deletion	
8.4	Radio Link Reconfiguration (synchronised)	12
8.5	Radio Link Reconfiguration (unsynchronised)	14
8.6	Down Link Code Reconfiguration (ETSI version)	15
8.7	Down Link Code Reconfiguration Trigger (TTC/ARIB version)	16
8.8	Cell/URA Update Indication/SRNS Relocation (ETSI version)	17
8.9	Cell/URA Update Indication/Cell/URA Update Indication/SRNS Relocation (TTC/ARIB version)	18
8.10	Radio Link Dropped Notification	19
8.11	Load Indication	20
8.12	Radio Measurements Reporting	21
8.13	URA Paging Request	21
8.14	SRNC Relocation Commit	22
8.15	Down Link Power Control	23
8.16	Outer Loop Power Control	23
9	Elements for RNSAP communication	24
9.1	Message functional definition and content	24
9.2	Message format	24
9.2.1	Message Contents	25
9.2.2	RADIO LINK SETUP	25
9.2.3	RADIO LINK SETUP RESPONSE	25
9.2.4	RADIO LINK SETUP FAILURE	26
9.2.5	RADIO LINK ADDITION	26
9.2.6	RADIO LINK ADDITION RESPONSE	26
9.2.7	RADIO LINK ADDITION FAILURE	27
9.2.8	RADIO LINK DELETION	27
9.2.9	RADIO LINK DELETION RESPONSE	27
9.2.10	RADIO LINK RECONFIGURATION PREPARE	27
9.2.11	RADIO LINK RECONFIGURATION READY	28
9.2.12	RADIO LINK RECONFIGURATION COMMIT	28
9.2.13	RADIO LINK RECONFIGURATION FAILURE	28
9.2.14	RADIO LINK RECONFIGURATION CANCEL	29
9.2.15	POWER CONTROL	29
9.2.16	OUTER LOOP POWER CONTROL	29
9.2.17	DL USER DATA RETRIEVAL	29
9.2.18	DL USER DATA RETRIEVAL RESPONSE	29
9.2.19	RNC RELOCATION REQUEST	29
9.2.20	RRC CONTEXT RETRIEVAL	30
9.2.21	RRC CONTEXT RETRIEVAL RESPONSE	30
9.2.22	DL CODE RECONFIGURATION REQUEST	30
9.2.23	RESET (FFS)	30
9.2.24	RESET ACKNOWLEDGE (FFS)	30
9.2.25	CONFUSION (FFS)	30
9.3	Information Element Coding	31
9.3.1	Message Identifier	33
9.3.2	Information Transfer Capability	34
9.3.3	ATM Address	34
9.3.4	ATM Binding ID	34
9.3.5	Cell ID	34
9.3.6	DCH ID	35
9.3.7	TFS (for DCH)	35

9.3.8	TFCS(for DCHs)	35
9.3.9	Radio Frequency	35
9.3.10	UL Interference level	35
9.3.11	UL scrambling code	35
9.3.12	UL channelisation code type	35
9.3.13	No. of UL channelisation code	35
9.3.14	UL channelisation code ID	35
9.3.15	DL channelisation code type	35
9.3.16	No. of Radio Links	35
9.3.17	Radio Link ID	35
9.3.18	No. of DL channelisation code	35
9.3.19	DL channelisation code ID	36
9.3.20	No. of DCHs	36
9.3.21	Neighbor Cell Information	36
9.3.22	Soft Combination Indicator	36
9.3.23	Phase Difference	36
9.3.24	Execution Time	36
9.3.25	Slot Offset	36
9.3.26	Frame offset	36
9.3.27	Initial DL Power	36
9.3.28	DL Power Range	36
9.3.29	Target UL Eb/I0	36
9.3.30	Old URA ID	36
9.3.31	Old RNTI	36
9.3.32	DCH QoS	37
9.3.33	Cause	37
9.4	Timers	38
10	Handling of unknown, unforeseen and erroneous protocol data	38
11	Annex A (normative):	38
12	History	39
ANNEX Iur Parameters List (Informative)		40
Intellectual Property Rights		54
Foreword		54
1	Scope	54
2	References	64
3	Definitions, symbols and abbreviations	64
3.1	Definitions	64
3.2	Symbols	75
3.3	Abbreviations	75
4	General	75
5	RNSAP Services	75
6	Services expected from signalling transport	75
7	Functions of RNSAP	75
8	Elementary RNSAP procedures	85
9	Elements for RNSAP communication	366
9.1	Message functional definition and content	366
9.2	Message format and information element coding	366
9.3	Timers	1626

10	Handling of unknown, unforeseen and erroneous protocol data.....	<u>1626</u>
11	Annex A (normative):.....	<u>1626</u>
12	History	<u>1637</u>

Intellectual Property Rights

Foreword

This Technical Specification has been produced by the 3rd Generation Partnership Project, Technical Specification Group <TSG name>.

The contents of this TS may be subject to continuing work within the 3GPP and may change following formal TSG approval. Should the TSG modify the contents of this TS, it will be re-released with an identifying change of release date and an increase in version number as follows:

Version m.t.e

where:

- m indicates [major version number]
- x the second digit is incremented for all changes of substance, i.e. technical enhancements, corrections, updates, etc.
- y the third digit is incremented when editorial only changes have been incorporated into the specification.

1 Scope

The present document ...

2 References

The following documents contain provisions which, through reference in this text, constitute provisions of the present document.

- References are either specific (identified by date of publication, edition number, version number, etc.) or non-specific.
- For a specific reference, subsequent revisions do not apply.
- For a non-specific reference, the latest version applies.
- A non-specific reference to an ETS shall also be taken to refer to later versions published as an EN with the same number.

[1+]

[2]

3 Definitions, symbols and abbreviations

3.1 Definitions

For the purposes of the present document, the [following] terms and definitions [given in ... and the following] apply.

<defined term>: <definition>.

example: text used to clarify abstract rules by applying them literally.

3.2 Symbols

For the purposes of the present document, the following symbols apply:

<symbol> <Explanation>

3.3 Abbreviations

<ACRONYM> <Explanation>

4 General

[Editor's note: This chapter should describe requirements on RNSAP forward/backward compatibility, error handling principles, message coding principles etc.]

The issue of the transport layer address is FFS.

5 RNSAP Services

The RNSAP offers the following services:

?

6 Services expected from signalling transport

7 Functions of RNSAP

8 Elementary RNSAP procedures

[Editor's note: This chapter should list RNSAP procedures, including a text describing the procedure (triggering events, successful and unsuccessful outcome. Message sequences should be provided (using Word pictures for simple editing).

1

8.1 Radio Link Setup

When the serving RNS makes an algorithmic decision to add the first cell or set of cells from another RNS (a drift RNS) to the active set of a specific RRC connection, the RNSAP message RADIO LINK SETUP is sent to the corresponding drift RNS to request setup of the radio link(s). This message contains essentially RL identifier(s), the target cell identifier(s), transport format sets (TFSS) for each active DCH and desired radio

resources for each radio link. The serving RNS also indicates when several radio links are to be setup in the drift RNS, either that

- 1) the radio links may be combined by the DRNS, or
- 2) the radio links must not be combined.

Additional information is FFS.

Since the drift RNS is responsible for its own radio resources the load control (Admission control) must be performed due to the request. In successful case (the load is not too high) the drift RNS allocates requested type of channelisation codes for each RL and assigns a binding identifier and a transmission address (e.g. ATM Address) for each DCH. This information is sent to the serving RNS in the message RADIO LINK SETUP RESPONSE. The drift RNS also provides the serving RNS with the:

Cell identity of all neighboring cells to the cell(s) where the radio link(s) is added.

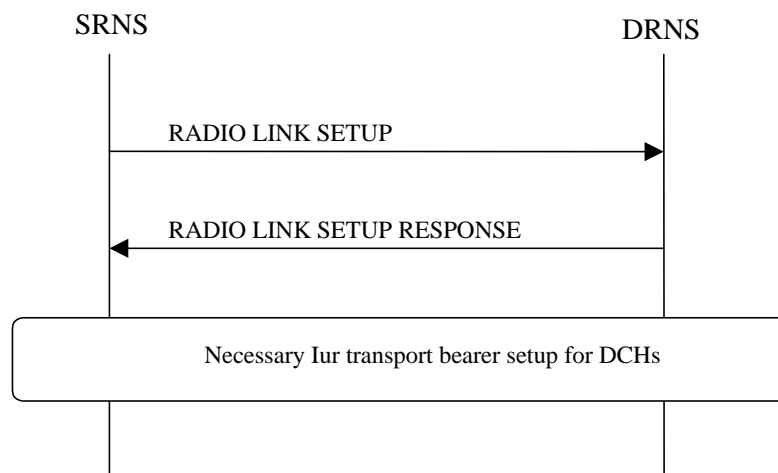
Information related to neighboring cells necessary for the serving RNS (the exact parameters are FFS), and the Signaling Address of any RNC controlling neighboring cells not controlled by the drift RNS.

Mechanisms to reduce the amount of information to be transported are FFS.

The serving RNS is responsible for setting up the I_{ur} transport bearers for each DCH. The transport bearers are setup towards the address indicated in the RADIO LINK SETUP RESPONSE message from the drift RNS. Also the setup messages should include the corresponding binding identifier, which will be used by the drift RNS to map each transport bearer to the corresponding DCH.

In unsuccessful case an RNSAP message RADIO LINK SETUP FAILURE is returned, indicating among other things the reason for failure.

An example of a corresponding message flow at the I_{ur} interface is presented in Figure 9-1.



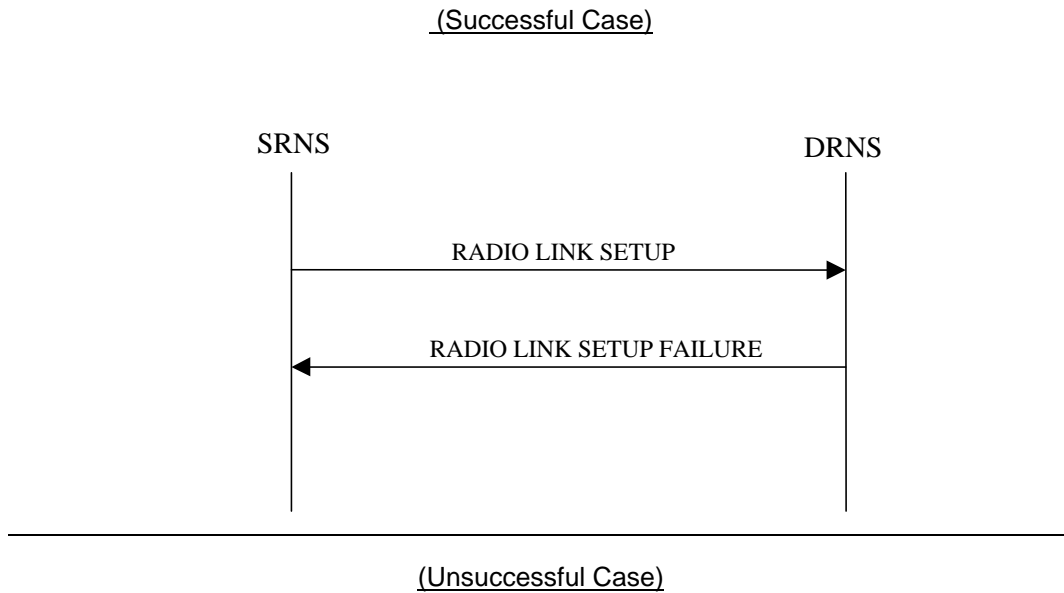


Figure 9-1. An example RNSAP message flow at I_{ur} interface for RL setup.

8.2 Radio Link Addition

When the serving RNS makes an algorithmic decision to add an additional cell or set of cells from another RNS (a drift RNS) to the active set of a specific RRC connection, the RNSAP message RADIO LINK ADDITION is sent to the corresponding drift RNS to request addition of a radio link. This message contains essentially RL identifier, the target cell identifier, transport format sets (TFSs) for each active DCH and desired radio resources for each radio link. The serving RNS also indicates either that

- 1) the new radio link may be combined with already existing radio links for this RRC connection, or
- 2) the new radio link must not be combined with already existing radio links for this RRC connection.

Additional information is ffs.

Since the drift RNS is responsible for its own radio resources the load control (Admission control) must be performed due to the request. In successful case (the load is not too high) the drift RNS allocates requested type of channelisation codes for each RL and assigns a binding identifier and a transmission address (e.g. AAL2 address) for each DCH. The time at which the DRNS allocates the channelisation code is FFS. This information is sent to the Serving RNS in the message RL ADDITION RESPONSE. The drift RNS also provides the SRNC with the:

- Cell Identity of all neighboring cells to the cell(s) where the radio link(s) is added,
- information related to neighboring cells necessary for the SRNC (the exact parameters are FFS), and
- the Signaling Address of any RNC controlling neighboring cells not controlled by the drift RNC

Mechanisms to reduce the amount of information to be transported is FFS.

The serving RNS is responsible for setting up the I_{ur} transport bearers for each DCH. The transport bearers are setup towards the address indicated in the RL ADDITION RESPONSE message from the drift RNS. Also the setup messages should include the corresponding binding identifier, which will be used by the drift RNS to map each transport bearer to the corresponding DCH.

In case the serving RNS has indicated that the new radio link may be combined with already existing radio links for this RRC connection, the drift RNS may instead of assigning binding identifiers and transport addresses in the RL ADDITION RESPONSE message indicate that the already existing I_{ur} transport bearers can be used also for the new radio link. In such a case the response includes the ATM Binding ID of the already existing AAL2 connection. If old transport bearers are used, then the serving RNS does not perform additional transport bearer setups.

An example of a corresponding message flow at I_{ur} interface is presented in figure 9-2.

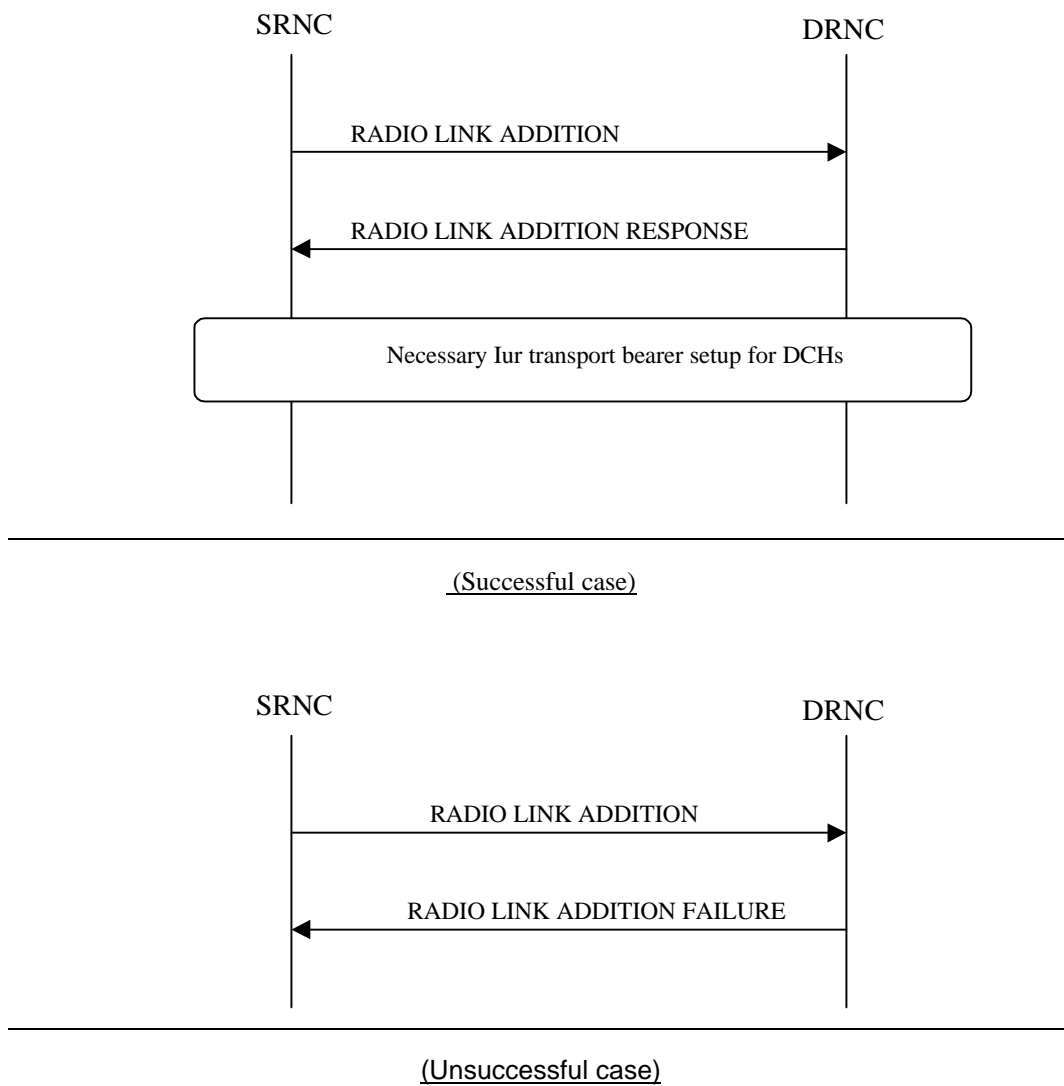


Figure 9-2. An example RNSAP protocol message flow at I_{ur} interface for inter RNS RL addition.

8.3 Radio Link Deletion

When the serving RNS makes an algorithmic decision to delete a cell from another RNS (drift RNS) from the active set of a specific RRC connection, the message RL DELETION to request deletion of radio link is sent to the corresponding drift RNS. The message contains essentially the RL identifier to be deleted. Upon reception of the message, the Drift RNS should immediately delete the radio link and all related allocations within the drift RNS and acknowledge the deletion to the Serving RNS by the message RL DELETION RESPONSE.

The serving RNS is responsible to release the corresponding I_{ur} transport bearers, if they are not used by other radio links.

An example of a corresponding message flow at I_{ur} interface is presented in figure 9-3.

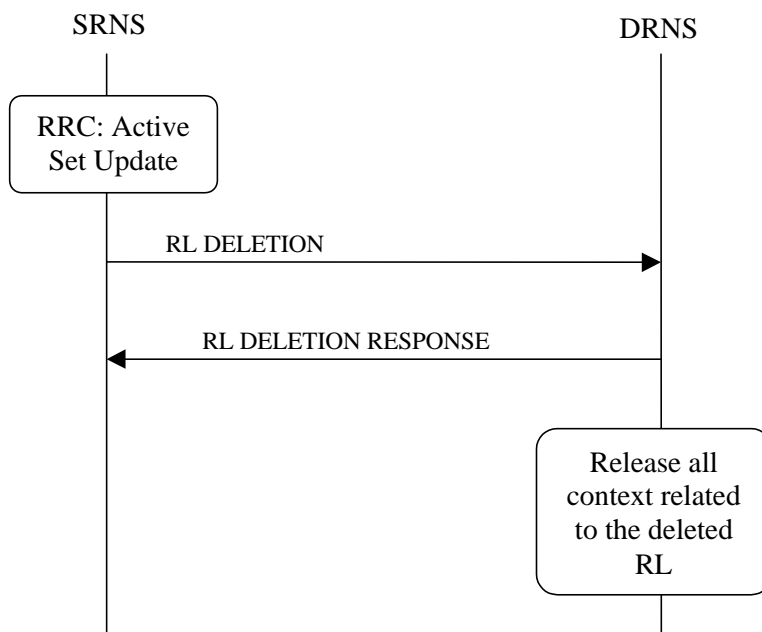


Figure 9-3. An example RNSAP protocol message flow at I_{ur} interface for interRNS RL deletion.

8.4 Radio Link Reconfiguration (synchronised)

RL Reconfiguration procedure is used to reconfigure radio links related to one UE-UTRAN connection within one DRNS. The procedure can be used to add, delete or modify a DCH, or to perform physical channel reconfiguration.

The RL Reconfiguration procedure is initiated by the serving RNS by sending the RNSAP message RL RECONFIGURATION PREPARE to the DRNS. The message is sent using the relevant signalling connection.

The message includes essentially the desired radio link parameters for the radio links after completion of this procedure. The following parameters can be specified (the list is to be considered as an incomplete example):

Possible parameters related to all radio links after completion of the procedure:

- DL channelisation code type(s)
- New UL channelisation type
- New TFCS
- IDs of the DCHs to be added / deleted or modified
- Priority of the added/modified DCH
- TFS of the added/modified DCH

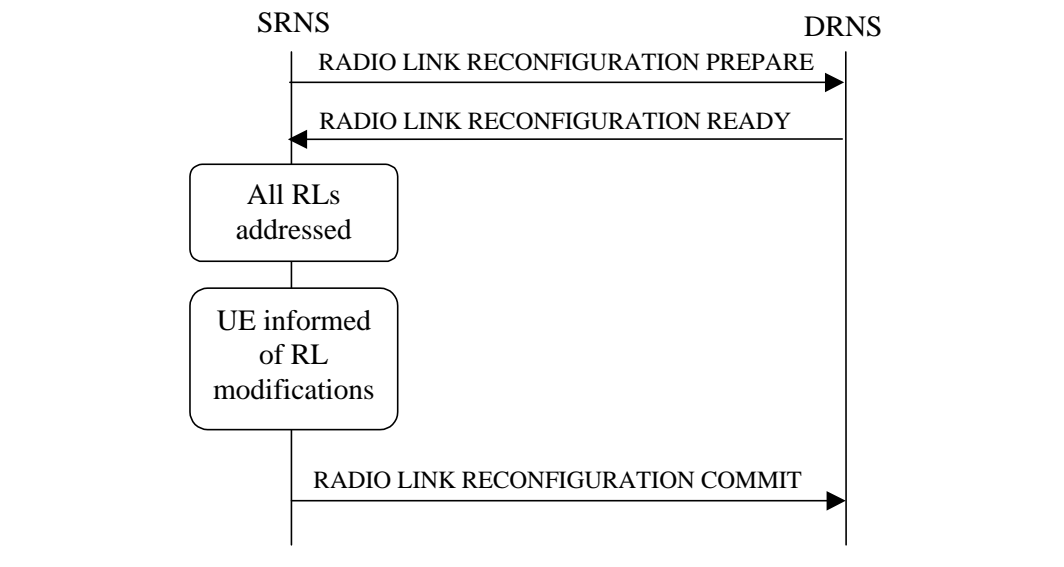
If the proposed modifications are allowed by the DRNS resource management algorithms, and the DRNS has successfully reserved the required resources it responds to the SRNS with RL RECONFIGURATION READY message. In unsuccessful case a RNSAP message RL RECONFIGURATION FAILURE is returned, indicating among other things the reason for failure.

The RL RECONFIGURATION READY message contains the downlink channelisation codes for each radio link (if changed), a Binding Identifier (BID) and transmission address (e.g. AAL2 address) for each new Iur transport bearer (if any).

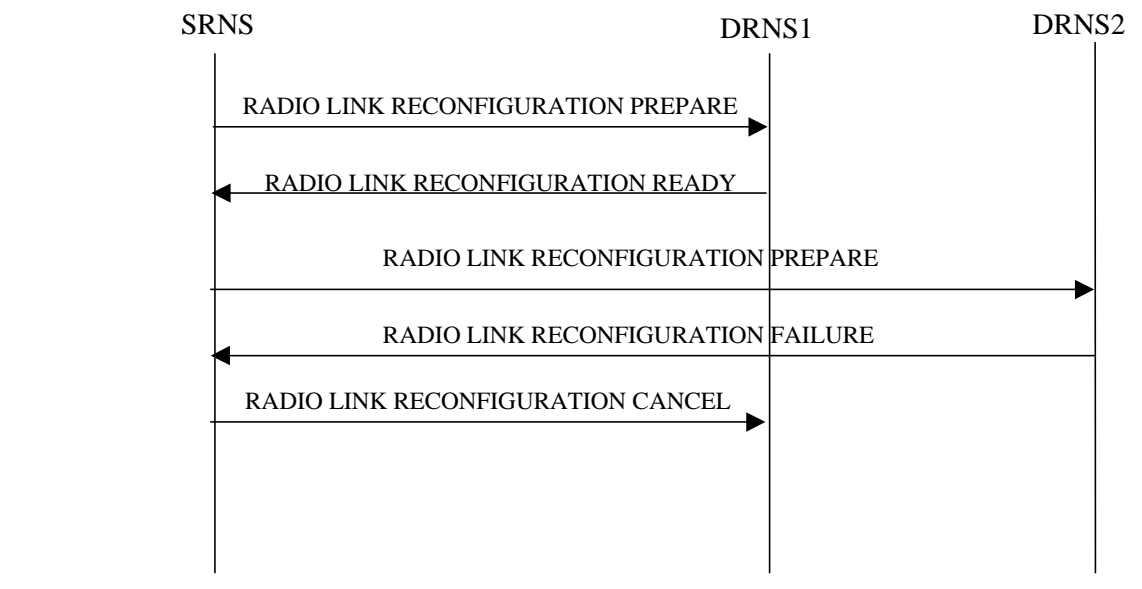
SRNS informs the UE about the changes in radio links (RL) with the relevant RRC message(s) and sends the RL RECONFIGURATION COMMIT message to DRNSs.

SRNC is responsible for releasing unnecessary Iur transport bearers (if any).

Note. A mechanism for synchronising the switch from the old to the new configuration in the UE and the DRNS is needed and FFS.



(Successful case)



(Unsuccessful case)

Figure 9-4. RL Reconfiguration procedure (synchronised)

8.5 Radio Link Reconfiguration (unsynchronised)

RL Reconfiguration procedure is used to reconfigure radio links related to one UE-UTRAN connection within one DRNS. The procedure can be used to add, delete or modify a DCH or to perform transport channel reconfiguration.

The Unsynchronised RL Reconfiguration is used when there is no need to synchronise the time of the switching from the old to the new configuration in the NodeBs used by the UE-UTRAN connection. This is the case when new TFCs are

added or old TFCs are deleted without changing the TFCI values of the TFCs that are maintained during the reconfiguration.

The RL Reconfiguration procedure (unsynchronised) is initiated by the serving RNS by sending the RNSAP message RL RECONFIGURATION to the DRNS. The message is sent using the relevant signalling connection.

The message includes essentially the desired radio link parameters for the radio links after completion of this procedure. The following parameters can be specified (the list is to be considered as an incomplete example):

Possible parameters related to all radio links after completion of the procedure:

- New TFCS
- IDs of the DCHs to be added / deleted or modified
- Priority of the added/modified DCH
- TFS of the added/modified DCH

If the proposed modifications are allowed by the DRNS resource management algorithms, and the DRNS has successfully reserved the required resources it responds to the SRNS with RL RECONFIGURATION RESPONSE message. In unsuccessful case a RNSAP message RL RECONFIGURATION FAILURE is returned, indicating among other things the reason for failure.

The RL RECONFIGURATION RESPONSE message contains the downlink spreading codes for each radio link (if changed), a Binding Identifier (BID) and transmission address (e.g. AAL2 address) for each new Iur transport bearer (if any).

SRNC is responsible for releasing unnecessary Iur transport bearers (if any).

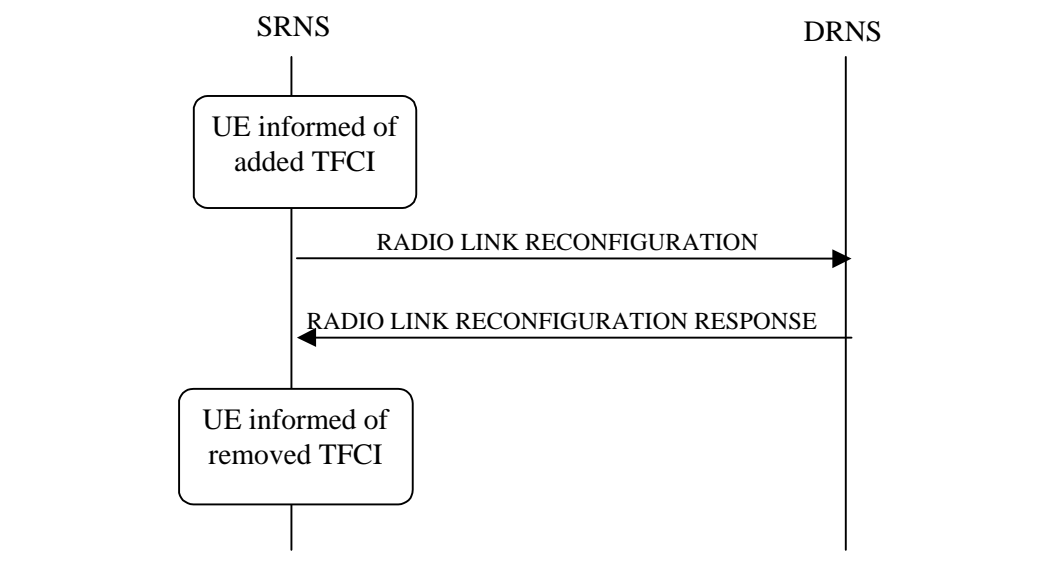


Figure 9-5. RL Reconfiguration procedure (unsynchronised)

8.6 Down Link Code Reconfiguration (ETSI version)

[Editor's note: This procedure is FFS. Study item Iur/2 from TTC/ARIB-ETSI merging: Separate reconfiguration trigger and reconfiguration procedure, or combined DRNC initiated DL reconfiguration procedure.]

DL Code Reconfiguration is used to change the DL channelisation codes of radio link(s) related to one UE-UTRAN connection. The spreading factor can not be changed and this procedure is used only to defragment the DL channelisation code pool.

Code reconfiguration procedure is initiated by the DRNS, when it detects unwanted fragmentation in the DL channelisation code pool(s). DRNC sends DL CODE RECONFIGURATION REQUEST to the SRNC via the appropriate dedicated connection. The message includes the radio link ID(s) and proposal for the new DL channelisation codes for them.

SRNC decides appropriate execution time for the change. SRNC sends relevant RRC message(s) to the UE and RNSAP DL CODE RECONFIGURATION COMMAND to the DRNS.

DRNS makes the switch to the new codes and releases the old DL channelisation codes.

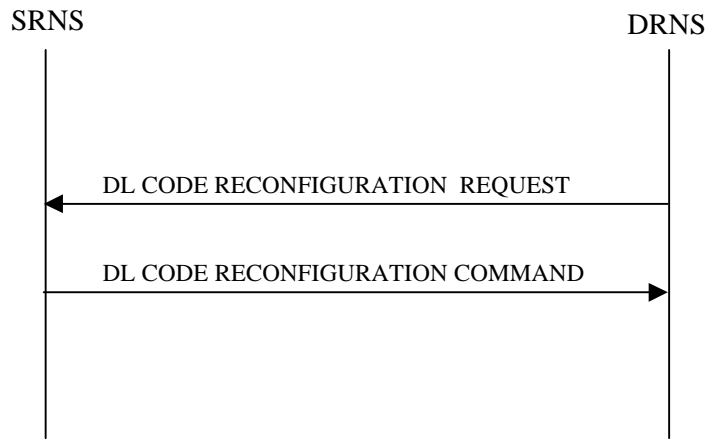


Figure 9-6. DL Code Reconfiguration procedure

8.7 Down Link Code Reconfiguration Trigger (TTC/ARIB version)

[Editor's note: This procedure is FFS. Study item Iur/2 from TTC/ARIB-ETSI merging: Separate reconfiguration trigger and reconfiguration procedure, or combined DRNC initiated DL reconfiguration procedure.]

Down Link Code Reconfiguration Trigger procedure is initiated by the DRNS when it detects unwanted fragmentation in the DL channelisation code pool(s). The DRNS sends a DL CODE RECONFIGURATION TRIGGER message to the SRNC via the appropriate dedicated connection.



Figure 9-7. An example RNSAP message flow at I_{ur} interface for DL Code Reconfiguration Trigger

8.8 Cell/URA Update Indication/SRNS Relocation (ETSI version)

[Editor's note: This procedure is FFS. Study item Iur/3 from TTC/ARIB-ETSI merging: cell and URA update.]

[Editor's note: The Cell-and URA Update procedures listed in YY.02 [10] have not yet been specified by the SMG2-UMTS ARC EG. The usage of this procedure needs to be further studied together with the Cell- and URA Update

procedures, and also with respect to common channel handling over I_{ur}. The name of the procedure is only a working name proposed by the editor.

UTRAN Cell update is an RRC procedure, which can be executed while in RACH/FACH common channel substate [6]. This functionality is required for the forward type of operation of scenario 2b (Inter RNS/Intra UTRAN) as defined in [7].

UTRAN Registration Area update is an RRC procedure, which can be executed while in RACH/PCH common channel substate [6]. This functionality is required for the forward type of operation of scenario 2b (Inter RNS/Intra UTRAN) as defined in [7].

Upon reception of RRC message UTRAN Cell Update or UTRAN Registration Area Update from a UE the drift RNS inserts necessary information received in the RRC message to the Cell/URA Update Indication message and sends the message to the serving RNS.

At reception of the Cell/URA Update Indication message, there are two options:

1. Perform the update without SRNS Relocation (How this is done is FFS.).
2. Perform the update with an SRNS Relocation (see [10] for a description of the SRNS Relocation procedure)

Which option to use is decided by the SRNS.

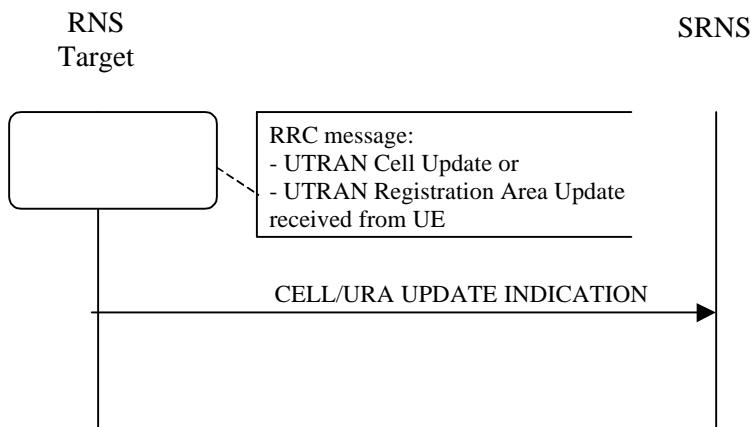


Figure 9-8: An example RNSAP message flow at I_{ur} interface for Cell/URA Update Indication/SRNS Relocation (ETSI version)

8.9 Cell/URA Update Indication. Cell/URA Update Indication/SRNS Relocation (TTC/ARIB version)

[Editor's note: This procedure is FFS. Study item Iur/3 from TTC/ARIB-ETSI merging: cell and URA update.]

UTRAN Cell update is an RRC procedure, which can be executed while in Cell Connected State (RACH/FACH substate). UTRAN Registration Area update is an RRC procedure, which can be executed while in URA Connected State (RACH/PCH substate).

There may exist two ways of procedure to reallocate RNC.

< 1. Backward method >

Upon reception of RRC message Cell Update REQUEST or UTRAN Registration Area Update REQUEST from a UE the drift RNC inserts necessary information received in the RRC message to the RNC Relocation REQUEST message and sends the message to the serving RNC and Perform the update with an SRNC relocation.

< 2. Forward method >

Upon reception of RRC message Cell Update REQUEST or UTRAN Registration Area Update REQUEST from a UE the drift RNC inserts necessary information received in the RRC message to the RRC Context Retrieval message and sends the message to the serving RNC and receive the RRC Context Retrieval Response message. After that the update with an SRNC relocation will be performed.

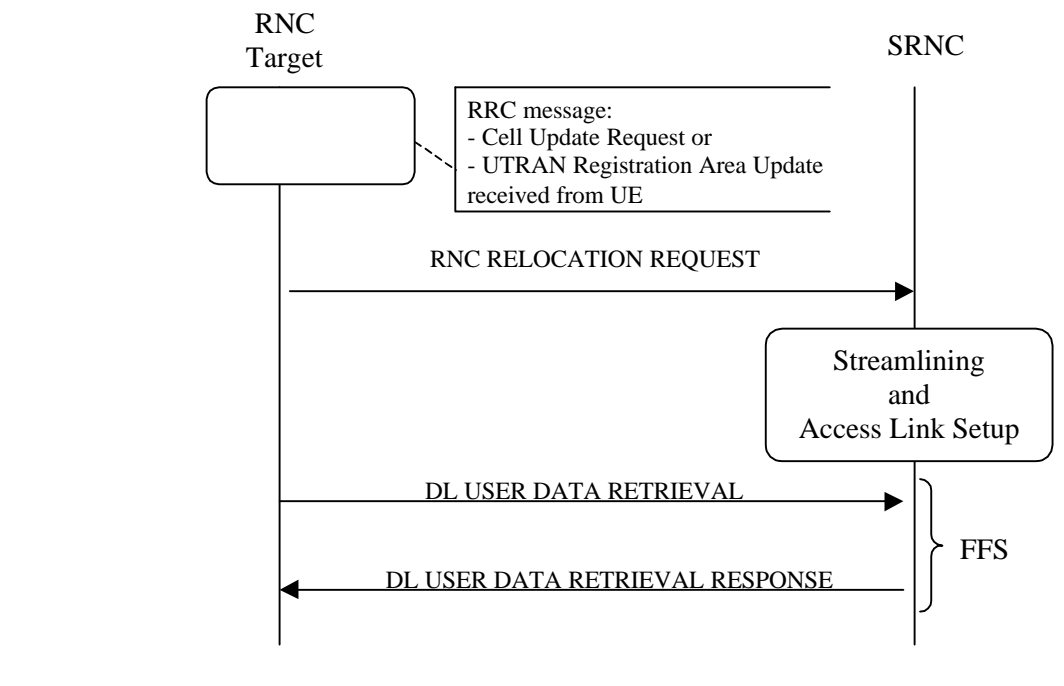


Figure 9-9. An example RNSAP message flow at I_{ur} interface for RNC Relocation (Backward method)

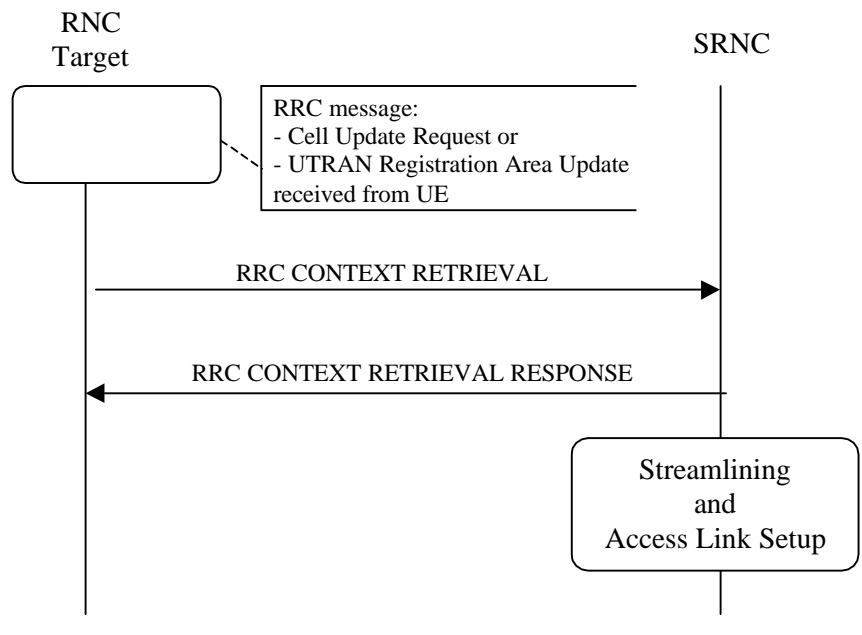


Figure 9-10. An example RNSAP message flow at I_{ur} interface for RNC Relocation (Forward method)

8.10 Radio Link Dropped Notification

This procedure is started by the drift RNS when a radio link has been dropped without any request from the serving RNS. The reasons for this is a DRNS internal failure or congestion (in the RNC or in the Node B or in the interfaces). Other reasons are FFS.

As consequence the SRNC sends the RNSAP message RL DROPPED NOTIFICATION to the SRNC. The message is sent using the relevant signalling connection.

The message specifies at least:

- RL ID(s): The message may address all the radio links of the drift RNC
- A reason code for the release (ex: cell congestion, hardware failures, etc.)

At reception of the RL DROPPED NOTIFICATION the SRNS could perform the following actions:

- Inform the MS that the radio link has to be removed.
- Perform relevant procedures (Branch Deletion) in order to release all the resources allocated in the DRNS to the removed RL(s), including the transmission resources on the I_{ur} interface.

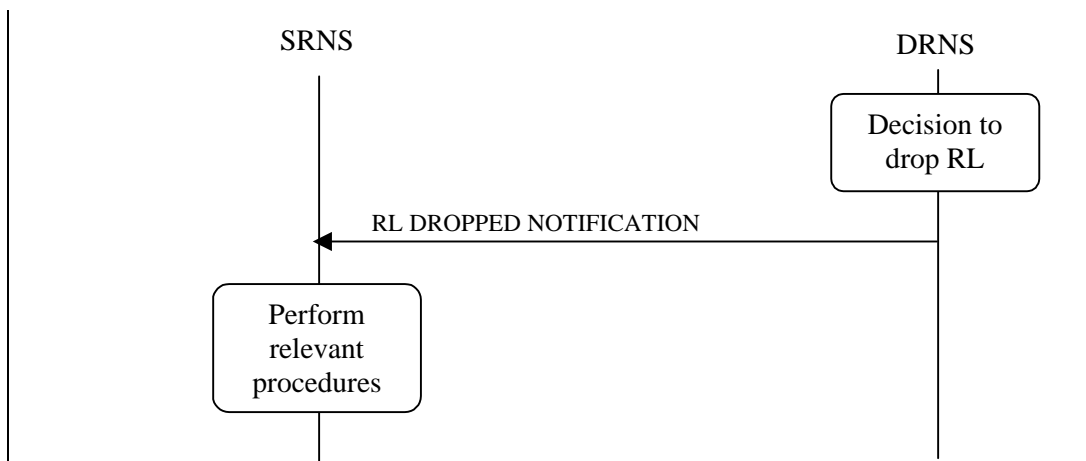


Figure 9-11. RL Dropped Notification procedure

Whether this procedure can also be used to notify dropping of DCH(s) is FFS.

8.11 Load Indication

[Editor's note: First paragraph of this chapter is added by the editor, based on Tdoc SMG2 UMTS-ARC 145/98. Minor editorial changes has been made to the bulleted list]

Load Indication procedure is triggered by the Drift RNS. It is used to indicate to the Serving RNS about the necessity to modify some DCH parameters within the Drift RNS.

Although the subsequent actions of the SRNS after the Load Indication procedure are out of the scope of this contribution, following examples can be assumed to be carried out by the SRNS.

- DCH modification procedure
- Ignoring the command.
- Performing an handover.
- Branch deletion procedure
- Triggering the renegotiation of the bearer quality of service
- Release the bearer

8.12 Radio Measurements Reporting

This procedure is used by the DRNS to report its radio measurements to the SRNS.

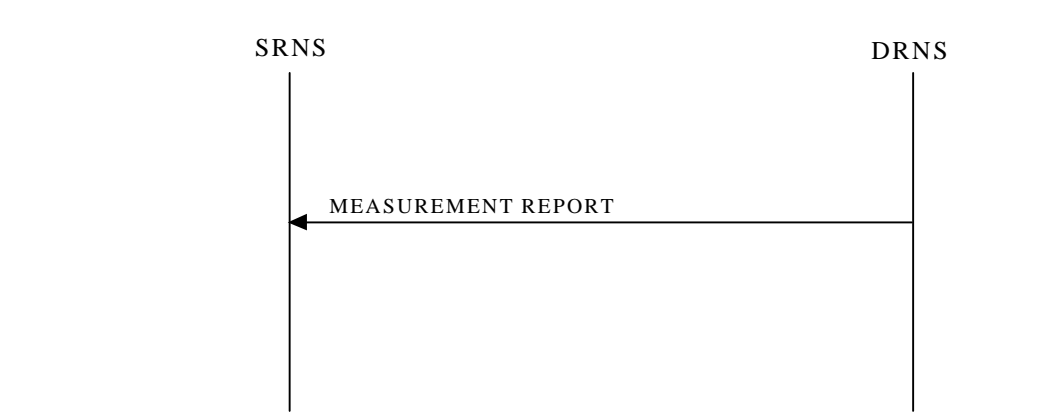


Figure 9-12. Radio Measurements Reporting

Note. It is FFS whether the reporting is done in the u-plane (inband) or in the c-plane (RNSAP).

8.13 URA Paging Request

This procedure is used by the SRNC to indicate to the Controlling RNC that a UE should be paged in a URA. The UE is identified by its RNTI, and the SRNC indicates in the message the URA identity as well as potential information that may be needed (e.g. DRX parameters).

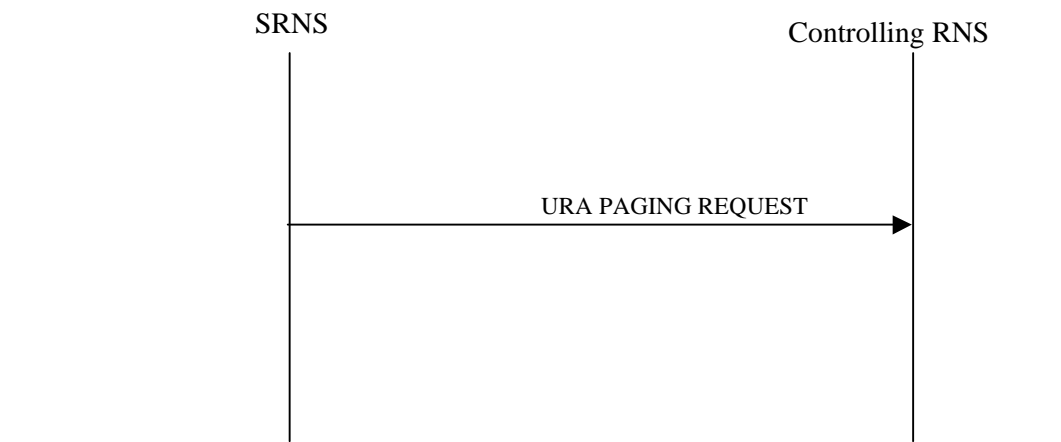


Figure 9-13. URA Paging Request

8.14 SRNC Relocation Commit

[Editor's note: This procedure is FFS. Study item Iu/3 from TTC/ARIB-ETSI merging: SRNS Relocation.]

The SRNC RELOCATION COMMIT procedure is part of the SRNC Relocation procedure described in YY.02 UTRAN Functions, Examples on Signalling Procedures [10].

The source RNC sends the SRNC RELOCATION COMMIT message to the target RNC when it has received an indication that it can proceed with the SRNC Relocation procedure from all the involved CN nodes [10].

At reception of the SRNC RELOCATION COMMIT message from the source RNC the target RNC executes the DL and UL switch for all RABs belonging to the UE at the earliest suitable time instance.

Prior to reception of the SRNC RELOCATION COMMIT message the target RNC has received a request to perform SRNC Relocation from all the involved CN nodes and responded to the CN nodes with a proceeding indication. The Iu transport bearers for each radio access bearer have also been established between the target RNC and all CN nodes.



Fig. 9-14: SRNC Relocation Commit

8.15 Down Link Power Control

[Editor's note: This procedure is FFS. Study item Iur/1 from TTC/ARIB-ETSI merging: Out-band or in-band Power Control (both UL and DL).]

The purpose of this procedure is to balance the DL transmission powers of the radio links used for the related RRC connection within the NodeB. The DL POWER CONTROL procedure is initiated by the Serving RNC by sending a DL POWER CONTROL message to the DRNC, which contains the desired power range for the radio links within the NodeB of the DRNS.

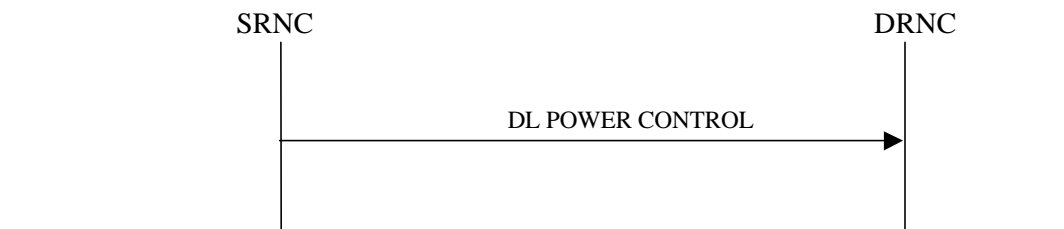


Figure 9-15: DL POWER CONTROL Procedure.

8.16 Outer Loop Power Control

[Editor's note: This procedure is FFS. Study item Iur/I from TTC/ARIB-ETSI merging: Out-band or in-band Power Control (both UL and DL).]

This procedure is used to provide the DRNC with a new quality target value (Eb/I0) for the UL quality.

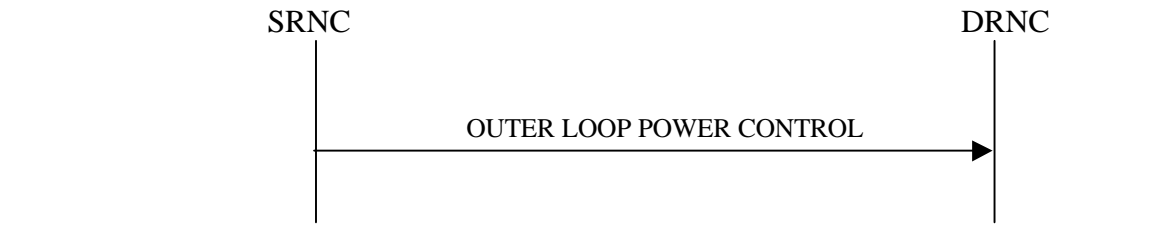


Figure 9-16: Outer loop Control Procedure

9 Elements for RNSAP communication

9.1 Message functional definition and content and information element coding

[Editor's note: This chapter should describe RNSAP messages and information elements]

[Editor's note: The contents of this chapter is FFS. It has not been agreed between ETSI and TTC/ARIB .]

This chapter defines the structure of the messages required for the RNSAP protocols.

For each message there is, a table listing the signaling elements in their order of appearance in the transmitted message.

All the RNSAP messages are listed in the following table :

[Note : All of these message name are tentative, these can be changed after complete discussion]

Message name	Reference
RADIO LINK SETUP	9.2.3.1.1
RADIO LINK SETUP RESPONSE	9.2.3.1.2
RADIO LINK SETUP FAILURE	9.2.3.1.3
RADIO LINK ADDITION	9.2.3.1.4
RADIO LINK ADDITION RESPONSE	9.2.3.1.5
RADIO LINK ADDITION FAILURE	9.2.3.1.6
RADIO LINK DELETION	9.2.3.1.7
RADIO LINK DELETION RESPONSE	9.2.3.1.8
RADIO LINK RECONFIGURATION PREPARE	9.2.3.1.9

<u>RADIO LINK RECONFIGURATION READY</u>	<u>9.2.3.1.10</u>
<u>RADIO LINK RECONFIGURATION COMMIT</u>	<u>9.2.3.1.11</u>
<u>RADIO LINK RECONFIGURATION FAILURE</u>	<u>9.2.3.1.12</u>
<u>RADIO LINK RECONFIGURATION CANCEL</u>	<u>9.2.3.1.13</u>
<u>POWER CONTROL</u>	<u>9.2.3.1.14</u>
<u>OUTER LOOP POWER CONTROL</u>	<u>9.2.3.1.15</u>
<u>DL USER DATA RETRIEVAL</u>	<u>9.2.3.1.16</u>
<u>DL USER DATA RETRIEVAL RESPONSE</u>	<u>9.2.3.1.17</u>
<u>RNC RELOCATION REQUEST</u>	<u>9.2.3.1.18</u>
<u>RRC CONTEXT RETRIEVAL</u>	<u>9.2.3.1.19</u>
<u>RRC CONTEXT RETRIEVAL RESPONSE</u>	<u>9.2.3.1.20</u>
<u>DL CODE RECONFIGURATION REQUEST</u>	<u>9.2.3.1.21</u>
<u>RESET (FFS)</u>	<u>9.2.3.1.22</u>
<u>RESET ACKNOWLEDGE (FFS)</u>	<u>9.2.3.1.23</u>
<u>CONFUSION (FFS)</u>	<u>9.2.3.1.24</u>

9.1.1 Message Contents

[Note: INFORMATION ELEMENT for each message shall be described in detail with each TYPE M/O.]

9.1.2 RADIO LINK SETUP

<u>INFORMATION ELEMENT</u>	<u>REFERENCE</u>	<u>DIRECTION</u>	<u>TYPE</u>	<u>LEN</u>
<u>Message Identifier</u>		<u>SRNC-DRNC</u>	<u>M</u>	
<u>Length</u>			<u>M</u>	
<u>Message Compatibility Information</u>			<u>M</u>	
<u>No. of DCHs</u>			<u>M</u>	
<u>DCH ID (# 1)</u>			<u>M</u>	
<u>TFS (for DCH ID# 1)</u>			<u>M</u>	
<u>DCH ID (# n)</u>			<u>M</u>	
<u>TFS (for DCH ID# n)</u>			<u>M</u>	
<u>TFCS (for DCHs)</u>			<u>M</u>	
<u>Radio Frequency</u>			<u>M</u>	
<u>UL scrambling code</u>			<u>M</u>	
<u>UL channelisation code type</u>			<u>M</u>	
<u>No. of UL channelisation code</u>			<u>M</u>	
<u>UL channelisation code id(s)</u>			<u>M</u>	
<u>DL channelisation code type</u>			<u>M</u>	
<u>No. of DL channelisation code</u>			<u>M</u>	
<u>No. of Radio Links</u>			<u>M</u>	
<u>Radio Link ID</u>			<u>M</u>	
<u>Cell ID</u>			<u>M</u>	
<u>Phase Difference</u>			<u>M</u>	
<u>Radio Link ID</u>			<u>O</u>	
<u>Cell ID</u>			<u>O</u>	
<u>Soft Combination Indication</u>			<u>O</u>	
<u>Phase Difference</u>			<u>O</u>	
<u>Slot offset</u>			<u>M</u>	
<u>Frame offset</u>			<u>M</u>	
<u>Initial DL Power</u>			<u>M</u>	
<u>Target UL Eb/lo</u>			<u>M</u>	

9.1.3 RADIO LINK SETUP RESPONSE

<u>INFORMATION ELEMENT</u>	<u>REFERENCE</u>	<u>DIRECTION</u>	<u>TYPE</u>	<u>LEN</u>
Message Identifier		DRNC -SRNC	M	
Length			M	
Message Compatibility Information			M	
No. of DCHs			M	
DCH ID (# 1)			M	
ATM Binding ID			M	
ATM Address			O	
DCH ID (# n)			M	
ATM Binding ID			M	
ATM Address			O	
UL Interference Level			M	
No. of Radio Links			M	
Radio Link ID			M	
Neighbor Cell Information			M	
No. of DL channelisation code			M	
DL channelisation code id #1			M	
DL channelisation code id #m			M	
Radio Link ID			O	
Neighbor Cell Information			O	
No. of DL channelisation code			O	
DL channelisation code id #1			O	
DL channelisation code id #m			O	

9.1.4 RADIO LINK SETUP FAILURE

<u>INFORMATION ELEMENT</u>	<u>REFERENCE</u>	<u>DIRECTION</u>	<u>TYPE</u>	<u>LEN</u>
Message Identifier		SRNC-DRNC	M	
Length			M	
Message Compatibility Information			M	
Cause			M	

9.1.5 RADIO LINK ADDITION

<u>INFORMATION ELEMENT</u>	<u>REFERENCE</u>	<u>DIRECTION</u>	<u>TYPE</u>	<u>LEN</u>
Message Identifier		SRNC-DRNC	M	
Length			M	
Message Compatibility Information			M	
Radio Frequency			O	
No. of Radio Links			M	
Radio Link ID			M	
Cell ID			M	
Soft Combination Indication			M	
Phase Difference			M	
Radio Link ID			O	
Cell ID			O	
Soft Combination Indication			O	
Phase Difference			O	

9.1.6 RADIO LINK ADDITION RESPONSE

<u>INFORMATION ELEMENT</u>	<u>REFERENCE</u>	<u>DIRECTION</u>	<u>TYPE</u>	<u>LEN</u>
----------------------------	------------------	------------------	-------------	------------

Message Identifier		DRNC-SRNC	M	
Length			M	
Message Compatibility Information			M	
No. of DCHs			M	
DCH ID (# 1)			M	
ATM Binding ID			M	
ATM Address			O	
DCH ID (# n)			M	
ATM Binding ID			M	
ATM Address			O	
UL Interference Level			O	
No. of Radio Links			M	
Radio Link ID			M	
Neighbor Cell Information			M	
No. of DL channelisation code			M	
DL channelisation code id #1			M	
DL channelisation code id #m			M	
Radio Link ID			O	
Neighbor Cell Information			O	
No. of DL channelisation code			O	
DL channelisation code id #1			O	
DL channelisation code id #m			O	

9.1.7 RADIO LINK ADDITION FAILURE

INFORMATION ELEMENT	REFERENCE	DIRECTION	TYPE	LEN
Message Identifier		SRNC-DRNC	M	
Length			M	
Message Compatibility Information			M	
Cause			M	

9.1.8 RADIO LINK DELETION

INFORMATION ELEMENT	REFERENCE	DIRECTION	TYPE	LEN
Message Identifier		SRNC-DRNC	M	
Length			M	
Message Compatibility Information			M	
No. of Radio Links			M	
Radio Link ID #1			M	
Radio Link ID #2			O	

9.1.9 RADIO LINK DELETION RESPONSE

INFORMATION ELEMENT	REFERENCE	DIRECTION	TYPE	LEN
Message Identifier		DRNC -SRNC	M	
Length			M	
Message Compatibility Information			M	

9.1.10 RADIO LINK RECONFIGURATION PREPARE

INFORMATION ELEMENT	REFERENCE	DIRECTION	TYPE	LEN
Message Identifier		SRNC-DRNC	M	
Length			M	

Message Compatibility Information			<u>M</u>	
No. of DCHs			<u>M</u>	
DCH ID (# 1)		For Addition	<u>M</u>	
TFS (for DCH ID# 1)			<u>O</u>	
DCH QoS			<u>M</u>	
DCH ID (# n)			<u>O</u>	
TFS (for DCH ID# n)			<u>O</u>	
DCH QoS			<u>O</u>	
TFCS (for DCHs)		For Reconfiguration	<u>M</u>	
UL channelisation code type			<u>M</u>	
No. of UL channelisation code			<u>M</u>	
UL channelisation code id(s)			<u>M</u>	
DL channelisation code type			<u>M</u>	
No. of DL channelisation code			<u>M</u>	
No. of Radio Links		For Deletion	<u>M</u>	
Radio Link ID#1			<u>M</u>	
Radio Link ID#2			<u>O</u>	

9.1.11 RADIO LINK RECONFIGURATION READY

<u>INFORMATION ELEMENT</u>	<u>REFERENCE</u>	<u>DIRECTION</u>	<u>TYPE</u>	<u>LEN</u>
Message Identifier		DRNC-SRNC	<u>M</u>	
Length			<u>M</u>	
Message Compatibility Information			<u>M</u>	
No. of DCHs			<u>O</u>	
DCH ID (# 1)		For Addition	<u>O</u>	
ATM Binding ID			<u>O</u>	
ATM Address			<u>O</u>	
DCH ID (# n)			<u>O</u>	
ATM Binding ID			<u>O</u>	
ATM Address			<u>O</u>	
No. of Radio Links		For Reconfiguration	<u>M</u>	
Radio Link ID			<u>M</u>	
No. of DL channelisation code			<u>M</u>	
DL channelisation code id #1			<u>M</u>	
DL channelisation code id #m			<u>M</u>	
Radio Link ID		For Deletion	<u>O</u>	
No. of DL channelisation code			<u>O</u>	
DL channelisation code id #1			<u>O</u>	
DL channelisation code id #m			<u>O</u>	

9.1.12 RADIO LINK RECONFIGURATION COMMIT

<u>INFORMATION ELEMENT</u>	<u>REFERENCE</u>	<u>DIRECTION</u>	<u>TYPE</u>	<u>LEN</u>
Message Identifier		SRNC-DRNC	<u>M</u>	
Length			<u>M</u>	
Message Compatibility Information			<u>M</u>	
Execution Time			<u>M</u>	

9.1.13 RADIO LINK RECONFIGURATION FAILURE

<u>INFORMATION ELEMENT</u>	<u>REFERENCE</u>	<u>DIRECTION</u>	<u>TYPE</u>	<u>LEN</u>
Message Identifier		DRNC-SRNC	<u>M</u>	

<u>Length</u>			<u>M</u>	
<u>Message Compatibility Information</u>			<u>M</u>	
<u>Cause</u>			<u>M</u>	

9.1.14 RADIO LINK RECONFIGURATION CANCEL

<u>INFORMATION ELEMENT</u>	<u>REFERENCE</u>	<u>DIRECTION</u>	<u>TYPE</u>	<u>LEN</u>
<u>Message Identifier</u>		<u>SRNC-DRNC</u>	<u>M</u>	
<u>Length</u>			<u>M</u>	
<u>Message Compatibility Information</u>			<u>M</u>	

9.1.15 POWER CONTROL

<u>INFORMATION ELEMENT</u>	<u>REFERENCE</u>	<u>DIRECTION</u>	<u>TYPE</u>	<u>LEN</u>
<u>Message Identifier</u>		<u>SRNC-DRNC</u>	<u>M</u>	
<u>Length</u>			<u>M</u>	
<u>Message Compatibility Information</u>			<u>M</u>	
<u>DL Power Range</u>			<u>M</u>	

9.1.16 OUTER LOOP POWER CONTROL

<u>INFORMATION ELEMENT</u>	<u>REFERENCE</u>	<u>DIRECTION</u>	<u>TYPE</u>	<u>LEN</u>
<u>Message Identifier</u>		<u>SRNC-DRNC</u>	<u>M</u>	
<u>Length</u>			<u>M</u>	
<u>Message Compatibility Information</u>			<u>M</u>	
<u>Target UL Eb/lo</u>			<u>M</u>	

9.1.17 DL USER DATA RETRIEVAL

<u>INFORMATION ELEMENT</u>	<u>REFERENCE</u>	<u>DIRECTION</u>	<u>TYPE</u>	<u>LEN</u>
<u>Message Identifier</u>		<u>RNC Target-SRNC</u>	<u>M</u>	
<u>Length</u>			<u>M</u>	
<u>Message Compatibility Information</u>			<u>M</u>	
<u>Old RNTI</u>			<u>M</u>	
<u>Old URA ID</u>			<u>M</u>	

9.1.18 DL USER DATA RETRIEVAL RESPONSE

<u>INFORMATION ELEMENT</u>	<u>REFERENCE</u>	<u>DIRECTION</u>	<u>TYPE</u>	<u>LEN</u>
<u>Message Identifier</u>		<u>SRNC-RNC Target</u>	<u>M</u>	
<u>Length</u>			<u>M</u>	
<u>Message Compatibility Information</u>			<u>M</u>	

9.1.19 RNC RELOCATION REQUEST

<u>INFORMATION ELEMENT</u>	<u>REFERENCE</u>	<u>DIRECTION</u>	<u>TYPE</u>	<u>LEN</u>
<u>Message Identifier</u>		<u>RNC Target-SRNC</u>	<u>M</u>	

Length			M	
Message Compatibility Information			M	
Old RNTI			M	
Old URA ID			M	

9.1.20 RRC CONTEXT RETRIEVAL

<u>INFORMATION ELEMENT</u>	<u>REFERENCE</u>	<u>DIRECTION</u>	<u>TYPE</u>	<u>LEN</u>
Message Identifier		RNC Target-SRNC	M	
Length			M	
Message Compatibility Information			M	
Old RNTI			M	
Old URA ID			M	

9.1.21 RRC CONTEXT RETRIEVAL RESPONSE

<u>INFORMATION ELEMENT</u>	<u>REFERENCE</u>	<u>DIRECTION</u>	<u>TYPE</u>	<u>LEN</u>
Message Identifier		SRNC-RNC Target	M	
Length			M	
Message Compatibility Information			M	

9.1.22 DL CODE RECONFIGURATION REQUEST

<u>INFORMATION ELEMENT</u>	<u>REFERENCE</u>	<u>DIRECTION</u>	<u>TYPE</u>	<u>LEN</u>
Message Identifier		DRNC-SRNC	M	
Length			M	
Message Compatibility Information			M	

9.1.23 RESET (FFS)

9.1.24 RESET ACKNOWLEDGE (FFS)

9.1.25 CONFUSION (FFS)

9.2 Message Format and Information Element Coding

[Editor's note: The contents of this chapter is FFS. It has not been agreed between ETSI and TTC/ARIB. Study item 1u/7 from TTC/ARIB-ETSI merging: Usage of abstract syntax (ASN.1 with CSN.1 as encoding rules, as recommended by SMG2) versus explicitly coding the transfer syntax (bit matrix, as proposed by TTC/ARIB).]

This paragraph contains the CODING of the signaling elements used.

The following convention are assigned for the sequence of transmission of bits and bytes:

Each bit position is marked as 1 to 8. Bit 1 is the least significant bit and is transmitted first.

In an element octets are identified by number, octet 1 is transmitted first, then octet 2 etc.

Length Indicator

It is desirable to have Length for messages and parameters because future version of protocol may have extension to the present message or parameter, and also variable size can be present in some parameters as well.

In case of message size exceeding 256 byte it is better to have 2 bytes for message LENGTH.

However it is enough to have 1 byte for parameter LENGTH.

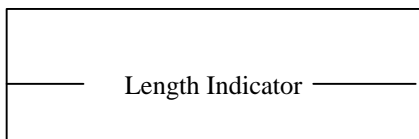


Fig. 3.2.2-1 Length Indicator for Message

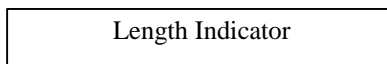


Fig. 3.2.2-2 Length Indicator for Parameter

Compatibility Information

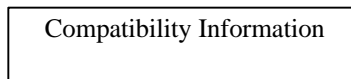
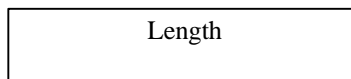
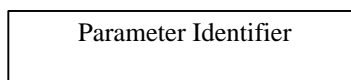
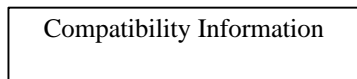
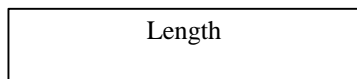
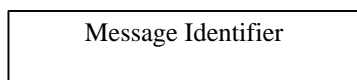
Compatibility Information is used in the situation of unrecognized messages or parameter. This parameter should be placed at a certain place then it is easy to pick up this parameter in any circumstances.

Consequently, the format can be as follow:

Message Identifier / Length / Compatibility Info / parameters

Parameter Identifier / Length / Compatibility Info / Fields

Figure 3 shows the coding format of message and Figure 4 shows the coding format of parameter.



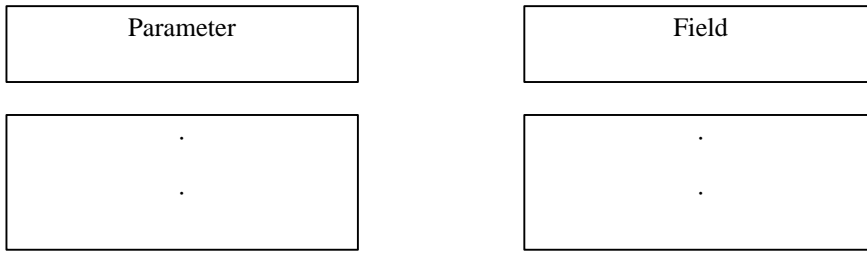


Fig. 3.2.2-3 Message Coding Format

Fig. 3.2.2-4 Parameter Coding Format

Fixed size data and Variable size data in Field

It may have two types of field i.e. with variable size or fixed size in data of field. It has no any problem to specify the fixed size field. Figure5 shows an example of fixed size data in field.

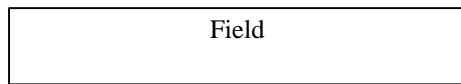


Fig. 3.2.2-5 Format for fixed size field

Regarding the variable size of data

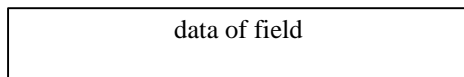
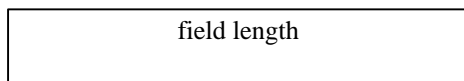


Fig. 3.2.2-6 Length method

The elements used and their CODING are:

<u>Element Identifier Coding</u>	<u>Element name</u>	<u>Reference</u>
	<u>ATM Binding ID</u>	
	<u>ATM Address</u>	
	<u>No of DCHs</u>	
	<u>DCH ID</u>	
	<u>TFS(for DCH)</u>	
	<u>TFCS(for DCHs)</u>	
	<u>Radio Frequency</u>	
	<u>UL scrambling code</u>	
	<u>UL channelisation code type</u>	
	<u>No. of UL channelisation code</u>	
	<u>UL channelisation code ID</u>	
	<u>UL Interference Level</u>	
	<u>DL channelisation code type</u>	
	<u>No. of DL channelisation code</u>	

	DL channelisation code id	
	Cell Id	
	Neighbor Cell Information	
	Soft Combination Indication	
	Phase Difference	
	Radio Link ID	
	No. of Radio Links	
	Execution Time	
	Slot offset	
	Frame offset	
	Initial DL Power	
	DL Power Range	
	Target UL Eb/lo	
	Old RNTI	
	Old URA ID	
	DCH QoS	

9.2.1 Message Identifier

Message Type uniquely identifies the message being sent. It is a single octet element, mandatory in all messages.

8765 4321	
	RADIO LINK SETUP RADIO LINK SETUP RESPONSE RADIO LINK SETUP FAILURE
	RADIO LINK ADDITION RADIO LINK ADDITION RESPONSE RADIO LINK ADDITION FAILURE
	RADIO LINK DELETION RADIO LINK DELETION RESPONSE
	RADIO LINK RECONFIGURATION PREPARE RADIO LINK RECONFIGURATION READY RADIO LINK RECONFIGURATION COMMIT RADIO LINK RECONFIGURATION FAILURE RADIO LINK RECONFIGURATION CANCEL
	POWER CONTROL
	OUTER LOOP POWER CONTROL
	DL USER DATA RETRIEVAL DL USER DATA RETRIEVAL RESPONSE RNC RELOCATION REQUEST RRC CONTEXT RETRIEVAL RRC CONTEXT RETRIEVAL RESPONSE
	DL CODE RECONFIGURATION REQUEST

Message Compatibility Information

Message Compatibility Information is used in the situation of unrecognized messages.

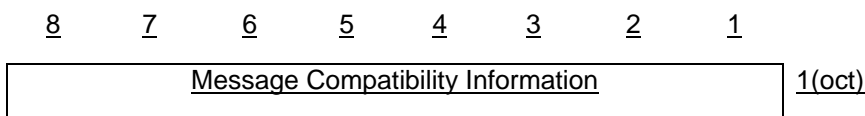
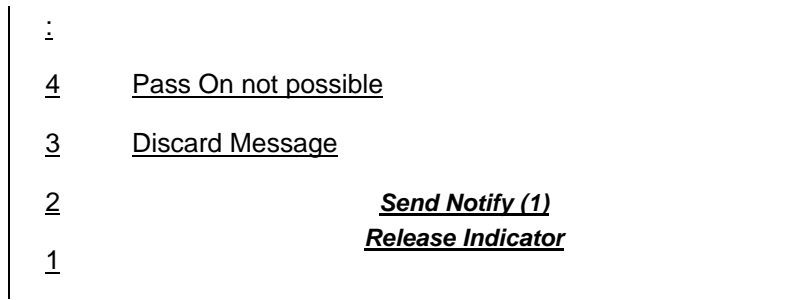


Fig.3.2.2.2 Message Compatibility Information

Table 3.2.2.2 Message Compatibility Information octet

Bit	8	Reserved
-----	---	----------



9.2.2 Information Transfer Capability

This element is included Information Transfer Capability which has been requested by the UE.

[Note: The following should be described the coding format.(The detail is FFS.)]

9.2.3 ATM Address

This element is included ATM address.

[Note: The following should be described the coding format.(The detail is FFS.)]

9.2.4 ATM Binding ID

This element is included ATM Binding ID.

[Note: The following should be described the coding format.(The detail is FFS.)]

9.2.5 Cell ID

This element uniquely identifies cell which a RNC and is of variable length containing.

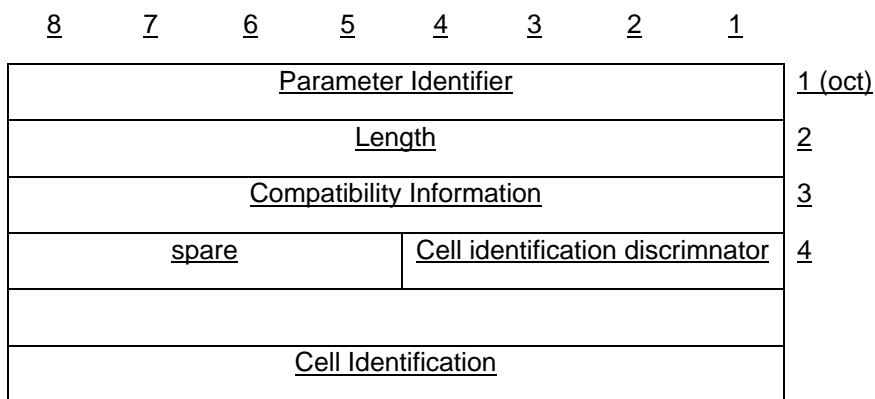


Fig.3.2.2.16 format of Cell Identifier

9.2.6 DCH ID

9.2.7 TFS(for DCH)

9.2.8 TFCS(for DCHs)

9.2.9 Radio Frequency

9.2.10 UL Interference level

9.2.11 UL scrambling code

9.2.12 UL channelisation code type

9.2.13 No. of UL channelisation code

9.2.14 UL channelisation code ID

9.2.15 DL channelisation code type

9.2.16 No. of Radio Links

9.2.17 Radio Link ID

9.2.18 No. of DL channelisation code

9.2.19 DL channelisation code ID

9.2.20 No .of DCHs

9.2.21 Neighbor Cell Information

9.2.22 Soft Combination Indicator

9.2.23 Phase Difference

9.2.24 Execution Time

9.2.25 Slot Offset

9.2.26 Frame offset

9.2.27 Initial DL Power

9.2.28 DL Power Range

This Information element defines the DL transmission power range to be used for the radio links used for the related RRC connection in the node-Bs within the Drift RNC.

9.2.29 Target UL Eb/I0

9.2.30 Old URA ID

9.2.31 Old RNTI

9.2.32 DCH QoS

9.2.33 Cause

This element is used to indicate the reason for a particular event to have occurred and is coded as shown below.

The cause value is a single octet element if the extension bit (bit 8) is set to 0. If it is set to 1 then the cause value is a 2octet field.

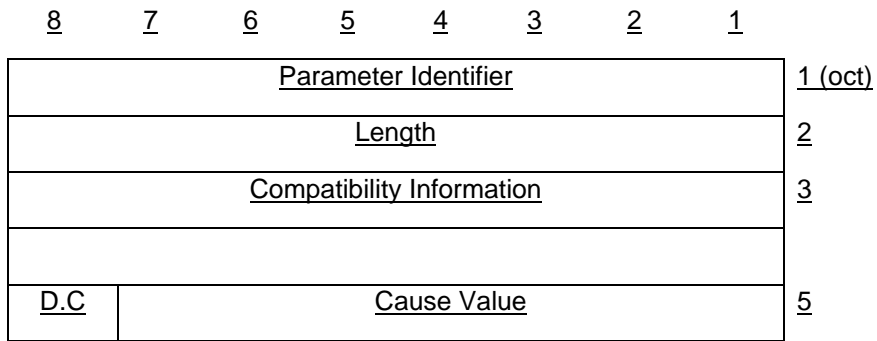


Fig.3.2.2.7 format of Cause

Cause Value:

Class : Normal event

Class:Normal event

Class:Resource unavailable

Class : Service or option not available

Class : Service or option not implemented

Class : invalid message (eg parameter out of range)

Class : protocol error

Class : interworking

The following table shows example of cause value.

Table3.2.2.7 cause value

<u>Cause Value</u>		
<u>Class</u>	<u>value</u>	
<u>765</u>	<u>4321</u>	

	<p><u>Normal termination</u></p> <p><u>Mobile illegal (ex. Authentication NG)</u></p> <p><u>O & M intervention</u></p> <p><u>Equipment failure</u></p> <p><u>Protocol error</u></p> <p><u>Message type non-existent or not implemented</u></p> <p><u>Information element/parameter non-existent or not implemented</u></p> <p><u>Radio link failure</u></p> <p><u>BS approach link failure</u></p> <p><u>Timer expired</u></p> <p><u>Ciphering algorithm not supported</u></p> <p><u>Resource unavailable</u></p> <p><u>Other values are reserved</u></p>
--	---

9.3 Timers

10 Handling of unknown, unforeseen and erroneous protocol data

11 Annex A (normative):

12 ANNEX B: Iur Parameters List (Informative)

RAB Setup

Parameter Category	Iur Parameters	Iur Message							Note
		<u>DCH to DCH</u>					<u>DCH to RA/FACH</u>		
		<u>RA DIO LIN K</u>	<u>RA DIO LIN K</u>	<u>RA DIO LIN K</u>	<u>RA DIO LIN K</u>	<u>RA DIO LIN K</u>	<u>RA DIO LIN K</u>	<u>RA DIO LIN K</u>	
		<u>RE CO NFI GU RAT ION PRE PAR E</u>	<u>RE CO NFI GU RAT ION REA DY</u>	<u>RE CO NFI GU RAT ION CO MMI T</u>	<u>RE CO NFI GU RAT ION FAI LUR E</u>	<u>RE CO NFI GU RAT ION CA NC EL (FF S)</u>	<u>DEL ETI ON</u>	<u>DEL ETI ON RES PO NSE</u>	
<u>Transport CH Info</u>	<u>No. of DCHs</u>	<u>m</u>	<u>:</u>	<u>:</u>	<u>:</u>	<u>:</u>	<u>:</u>	<u>:</u>	
	<u>DCH ID (# 1)</u>	<u>m</u>	<u>:</u>	<u>:</u>	<u>:</u>	<u>:</u>	<u>:</u>	<u>:</u>	<u>DCH ID or each DCH</u>
	<u>TFS (for DCH ID# 1)</u>	<u>m</u>	<u>:</u>	<u>:</u>	<u>:</u>	<u>:</u>	<u>:</u>	<u>:</u>	<u>Set TFS when it is required</u>
	<u>—:</u>								

	<u>DCH ID (# n)</u>	<u>m</u>	-	-	-	-	-	-	
	<u>TFS (for DCH ID# n)</u>	<u>m</u>	-	-	-	-	-	-	
	<u>TFCS (for DCHs)</u>	<u>m</u>	-	-	-	-	-	-	<u>Set TFCS per UE</u>
<u>Transport Layer Addressing Information</u>	<u>No. of DCHs</u>	-	<u>m</u>	-	-	-	-	-	
	<u>DCH ID (# 1)</u>	-	<u>m</u>	-	-	-	-	-	
	<u>ATM Binding ID</u>	-	<u>m</u>	-	-	-	-	-	<u>(TTC) 1 Binding ID for 1 DCH *1</u>
	<u>ATM Address</u>	-	<u>o</u>	-	-	-	-	-	
	<u>⋮</u>								
	<u>DCH ID (# n)</u>	-	<u>m</u>	-	-	-	-	-	
	<u>ATM Binding ID</u>	-	<u>m</u>	-	-	-	-	-	
	<u>ATM Address</u>	-	<u>o</u>	-	-	-	-	-	
<u>Radio Frequency Info</u>	<u>Radio Frequency</u>	-	-	-	-	-	-	-	<u>Set Radio Frequency per UE</u>
	<u>UL Interference Level</u>	-	-	-	-	-	-	-	
<u>UL Radio Resources</u>	<u>UL scrambling code</u>	-	-	-	-	-	-	-	<u>Set UL Scrambling Code per UE</u>
	<u>UL spreading code type</u>	<u>m</u>	-	-	-	-	-	-	
	<u>No. of UL spreading code</u>	<u>m</u>	-	-	-	-	-	-	
	<u>UL spreading code id(s)</u>	<u>m</u>	-	-	-	-	-	-	
<u>DL Radio Resources</u>	<u>DL spreading code type</u>	<u>m</u>	-	-	-	-	-	-	<u>Same code type for all Radio Links</u>
	<u>No. of DL spreading code</u>	<u>m</u>	-	-	-	-	-	-	<u>Same number of codes for all Radio Links</u>
	<u>No. of Radio Links</u>	<u>m</u>	-	-	-	-	<u>m</u>	-	
	<u>Radio Link ID</u>	<u>m</u>	-	-	-	-	<u>m</u>	-	

	<u>Cell ID</u>	:	:	:	:	:	:	:	
	<u>Soft Combination Indicator</u>	:	:	:	:	:	:	:	<u>Indicates May, Must, Must not</u>
	<u>Phase Difference</u>	:	:	:	:	:	:	:	
	___:								
	<u>Radio Link ID</u>	o	:	:	:	:	o	:	
	<u>Cell ID</u>	:	:	:	:	:	:	:	
	<u>Soft Combination Indicator</u>	:	:	:	:	:	:	:	
	<u>Phase Difference</u>	:	:	:	:	:	:	:	
<u>DL Radio Resources</u>	<u>No. of Radio Links</u>	:	m	:	:	:	:	:	
	<u>Radio Link ID</u>	:	m	:	:	:	:	:	
	<u>Neighbor Cell Information</u>	:	:	:	:	:	:	:	<u>FFS*2</u>
	<u>No. of DL spreading code</u>	:	m	:	:	:	:	:	
	<u>DL spreading code id #1</u>	:	m	:	:	:	:	:	
	___:								
	<u>DL spreading code id #m</u>	:	m	:	:	:	:	:	
	___:								
	<u>Radio Link ID</u>	:	o	:	:	:	:	:	
	<u>Neighbor Cell Information</u>	:	:	:	:	:	:	:	<u>FFS</u>
	<u>No. of DL spreading code</u>	:	o	:	:	:	:	:	
	<u>DL spreading code id #1</u>	:	o	:	:	:	:	:	
	___:								
	<u>DL spreading code id #m</u>	:	o	:	:	:	:	:	

<u>Execution Time</u>	<u>Execution Time</u>	-	-	m	-	-	-	-	
<u>Offset Values</u>	<u>Slot offset</u>	-	-	-	-	-	-	-	
	<u>Frame offset</u>	-	-	-	-	-	-	-	
<u>Power Control Info</u>	<u>Initial DL Power</u>	-	-	-	-	-	-	-	<u>For Initial DL Power Setting</u>
	<u>DL Power Range</u>	-	-	-	-	-	-	-	<u>For Correcting DL Power Drifting during DHO</u>
<u>Outerloop Power Control Info</u>	<u>Target UL Eb/lo</u>	-	-	-	-	-	-	-	<u>For L1 Power Control</u>
<u>Cause</u>	<u>Cause</u>	-	-	-	m	-	-	-	

m: mandatory, o: optional

*1: In TTC assumption, in the case of intra RFTR RL addition, same lur ATM connection is used. Therefore, in case of RADIO LINK ADDITION resp.conf.(Inter RFTR), RACFd send existing binding ID to RACFa.

*2: Contents of this information is FFS. It is related to BS addressing scheme.

RAB Reconfiguration

Parameter Category	Uur Parameters	Uur Message					Note
		<u>DCH to DCH</u>					
		<u>RA</u> <u>DIO</u> <u>LIN</u> <u>K</u>	<u>RA</u> <u>DIO</u> <u>LIN</u> <u>K</u>	<u>RA</u> <u>DIO</u> <u>LIN</u> <u>K</u>	<u>RA</u> <u>DIO</u> <u>LIN</u> <u>K</u>	<u>RA</u> <u>DIO</u> <u>LIN</u> <u>K</u>	
		<u>RE</u> <u>CO</u> <u>NFI</u> <u>GU</u> <u>RAT</u> <u>ION</u>	<u>RE</u> <u>CO</u> <u>NFI</u> <u>GU</u> <u>RAT</u> <u>ION</u>	<u>RE</u> <u>CO</u> <u>NFI</u> <u>GU</u> <u>RAT</u> <u>ION</u>	<u>RE</u> <u>CO</u> <u>NFI</u> <u>GU</u> <u>RAT</u> <u>ION</u>	<u>RE</u> <u>CO</u> <u>NFI</u> <u>GU</u> <u>RAT</u> <u>ION</u>	
		<u>PRE</u> <u>PAR</u> <u>E</u>	<u>REA</u> <u>DY</u>	<u>CO</u> <u>MMI</u> <u>I</u>	<u>FAI</u> <u>LUR</u> <u>E</u>	<u>CA</u> <u>NC</u> <u>EL</u> <u>(FF</u> <u>S)</u>	
<u>Transport CH Info</u>	<u>No. of DCHs</u>	<u>m</u>	<u>:</u>	<u>:</u>	<u>:</u>	<u>:</u>	
	<u>DCH ID (# 1)</u>	<u>m</u>	<u>:</u>	<u>:</u>	<u>:</u>	<u>:</u>	<u>DCH ID or each DCH</u>
	<u>TFS (for DCH ID# 1)</u>	<u>m</u>	<u>:</u>	<u>:</u>	<u>:</u>	<u>:</u>	<u>Set TFS when it is required</u>
	<u>—:</u>						
	<u>DCH ID (# n)</u>	<u>m</u>	<u>:</u>	<u>:</u>	<u>:</u>	<u>:</u>	
	<u>TFS (for DCH ID# n)</u>	<u>m</u>	<u>:</u>	<u>:</u>	<u>:</u>	<u>:</u>	
	<u>TFCS (for DCHs)</u>	<u>m</u>	<u>:</u>	<u>:</u>	<u>:</u>	<u>:</u>	<u>Set TFCS per UE</u>
<u>Transport Layer</u>	<u>No. of DCHs</u>	<u>:</u>	<u>m</u>	<u>:</u>	<u>:</u>	<u>:</u>	
<u>Addressing Information</u>							

	<u>DCH ID (# 1)</u>	:	<u>m</u>	:	:	:	
	<u>ATM Binding ID</u>	:	<u>m</u>	:	:	:	<u>(TTC) 1 Binding ID for 1 DCH *1</u>
	<u>ATM Address</u>	:	<u>o</u>	:	:	:	
	<u>_____:</u>						
	<u>DCH ID (# n)</u>	:	<u>m</u>	:	:	:	
	<u>ATM Binding ID</u>	:	<u>m</u>	:	:	:	
	<u>ATM Address</u>	:	<u>o</u>	:	:	:	
<u>Radio Frequency Info</u>	<u>Radio Frequency</u>	:	:	:	:	:	<u>Set Radio Frequency per UE</u>
	<u>UL Interference Level</u>	:	:	:	:	:	
<u>UL Radio Resources</u>	<u>UL scrambling code</u>	:	:	:	:	:	<u>Set UL Scrambling Code per UE</u>
	<u>UL spreading code type</u>	<u>m</u>	:	:	:	:	
	<u>No. of UL spreading code</u>	<u>m</u>	:	:	:	:	
	<u>UL spreading code id(s)</u>	<u>m</u>	:	:	:	:	
<u>DL Radio Resources</u>	<u>DL spreading code type</u>	<u>m</u>	:	:	:	:	<u>Same code type for all Radio Links</u>
	<u>No. of DL spreading code</u>	<u>m</u>	:	:	:	:	<u>Same number of codes for all Radio Links</u>
	<u>No. of Radio Links</u>	<u>m</u>	:	:	:	:	
	<u>Radio Link ID</u>	<u>m</u>	:	:	:	:	
	<u>Cell ID</u>	:	:	:	:	:	
	<u>Soft Combination Indicator</u>	:	:	:	:	:	<u>Indicates May, Must, Must not</u>
	<u>Phase Difference</u>	:	:	:	:	:	
	<u>_____:</u>						

	<u>Radio Link ID</u>	o	-	-	-	-	
	<u>Cell ID</u>	-	-	-	-	-	
	<u>Soft Combination Indicator</u>	-	-	-	-	-	
	<u>Phase Difference</u>	-	-	-	-	-	
<u>DL Radio Resources</u>	<u>No. of Radio Links</u>	-	m	-	-	-	
	<u>Radio Link ID</u>	-	m	-	-	-	
	<u>Neighbor Cell Information</u>	-	-	-	-	-	<u>FFS*2</u>
	<u>No. of DL spreading code</u>	-	m	-	-	-	
	<u>DL spreading code id #1</u>	-	m	-	-	-	
	___:						
	<u>DL spreading code id #m</u>	-	m	-	-	-	
	___:						
	<u>Radio Link ID</u>	-	o	-	-	-	
	<u>Neighbor Cell Information</u>	-	-	-	-	-	<u>FFS</u>
	<u>No. of DL spreading code</u>	-	o	-	-	-	
	<u>DL spreading code id #1</u>	-	o	-	-	-	
	___:						
	<u>DL spreading code id #m</u>	-	o	-	-	-	
<u>Execution Time</u>	<u>Execution Time</u>	-	-	m	-	-	
<u>Offset Values</u>	<u>Slot offset</u>	-	-	-	-	-	
	<u>Frame offset</u>	-	-	-	-	-	
<u>Power Control Info</u>	<u>Initial DL Power</u>	-	-	-	-	-	<u>For Initial DL Power Setting</u>

[UMTS <spec>]

~~TS RAN S3.23 V0.0.21 (1999-02)~~ ~~TS RAN S3.23 V0.0.21 (1999-02)~~ ~~TS RAN S3.23 V0.0.2 (1999-02)~~

	<u>DL Power Range</u>	:	:	:	:	:	<u>For Correcting DL Power Drifting during DHO</u>
<u>Outerloop Power Control Info</u>	<u>Target UL Eb/lo</u>	:	:	:	:	:	<u>For L1 Power Control</u>
<u>Cause</u>	<u>Cause</u>	:	:	:	<u>m</u>	:	

*1, *2: Same as the previous.

RAB Release

<u>Parameter Category</u>	<u>Iur Parameters</u>	<u>Iur Message</u>							<u>Note</u>
		<u>DCH to DCH</u>					<u>DCH to RA/FACH</u>		
		<u>RA DIO LINK</u>	<u>RA DIO LINK</u>	<u>RA DIO LINK</u>	<u>RA DIO LINK</u>	<u>RA DIO LINK</u>	<u>RA DIO LINK</u>	<u>RA DIO LINK</u>	
		<u>RECOGNITION</u>	<u>RECOGNITION</u>	<u>RECOGNITION</u>	<u>RECOGNITION</u>	<u>RECOGNITION</u>	<u>DELETION</u>	<u>DELETION</u>	
		<u>PREPARATION</u>	<u>READY</u>	<u>COMMIT</u>	<u>FAILURE</u>	<u>CANCELS (FFS)</u>		<u>RESPONSE</u>	
<u>Transport CH Info</u>	<u>No. of DCHs</u>	<u>m</u>	<u>:</u>	<u>:</u>	<u>:</u>	<u>:</u>	<u>:</u>	<u>:</u>	
	<u>DCH ID (# 1)</u>	<u>m</u>	<u>:</u>	<u>:</u>	<u>:</u>	<u>:</u>	<u>:</u>	<u>:</u>	<u>DCH ID or each DCH</u>
	<u>TFS (for DCH ID# 1)</u>	<u>:</u>	<u>:</u>	<u>:</u>	<u>:</u>	<u>:</u>	<u>:</u>	<u>:</u>	<u>Set TFS when it is required</u>
	<u>—:</u>								
	<u>DCH ID (# n)</u>	<u>m</u>	<u>:</u>	<u>:</u>	<u>:</u>	<u>:</u>	<u>:</u>	<u>:</u>	
	<u>TFS (for DCH ID# n)</u>	<u>:</u>	<u>:</u>	<u>:</u>	<u>:</u>	<u>:</u>	<u>:</u>	<u>:</u>	
	<u>TFCS (for DCHs)</u>	<u>m</u>	<u>:</u>	<u>:</u>	<u>:</u>	<u>:</u>	<u>:</u>	<u>:</u>	<u>Set TFCS per UE</u>

<u>Transport Layer</u>	<u>No. of DCHs</u>	-	-	-	-	-	-	-	
<u>Addressing Information</u>									
	<u>DCH ID (# 1)</u>	-	-	-	-	-	-	-	
	<u>ATM Binding ID</u>	-	-	-	-	-	-	-	<u>(TTC) 1 Binding ID for 1 DCH *1</u>
	<u>ATM Address</u>	-	-	-	-	-	-	-	
	<u>⋮</u>								
	<u>DCH ID (# n)</u>	-	-	-	-	-	-	-	
	<u>ATM Binding ID</u>	-	-	-	-	-	-	-	
	<u>ATM Address</u>	-	-	-	-	-	-	-	
<u>Radio Frequency Info</u>	<u>Radio Frequency</u>	-	-	-	-	-	-	-	<u>Set Radio Frequency per UE</u>
	<u>UL Interference Level</u>	-	-	-	-	-	-	-	
<u>UL Radio Resources</u>	<u>UL scrambling code</u>	-	-	-	-	-	-	-	<u>Set UL Scrambling Code per UE</u>
	<u>UL spreading code type</u>	<u>m</u>	-	-	-	-	-	-	
	<u>No. of UL spreading code</u>	<u>m</u>	-	-	-	-	-	-	
	<u>UL spreading code id(s)</u>	<u>m</u>	-	-	-	-	-	-	
<u>DL Radio Resources</u>	<u>DL spreading code type</u>	<u>m</u>	-	-	-	-	-	-	<u>Same code type for all Radio Links</u>
	<u>No. of DL spreading code</u>	<u>m</u>	-	-	-	-	-	-	<u>Same number of codes for all Radio Links</u>
	<u>No. of Radio Links</u>	<u>m</u>	-	-	-	-	<u>m</u>	-	
	<u>Radio Link ID</u>	<u>m</u>	-	-	-	-	<u>m</u>	-	
	<u>Cell ID</u>	-	-	-	-	-	-	-	
	<u>Soft Combination Indicator</u>	-	-	-	-	-	-	-	<u>Indicates May, Must, Must not</u>

	<u>Phase Difference</u>	:	:	:	:	:	:	:	
	___:								
	<u>Radio Link ID</u>	<u>o</u>	:	:	:	:	<u>o</u>	:	
	<u>Cell ID</u>	:	:	:	:	:	:	:	
	<u>Soft Combination Indicator</u>	:	:	:	:	:	:	:	
	<u>Phase Difference</u>	:	:	:	:	:	:	:	
<u>DL Radio Resources</u>	<u>No. of Radio Links</u>	:	<u>m</u>	:	:	:	:	:	
	<u>Radio Link ID</u>	:	<u>m</u>	:	:	:	:	:	
	<u>Neighbor Cell Information</u>	:	:	:	:	:	:	:	<u>FFS*2</u>
	<u>No. of DL spreading code</u>	:	<u>m</u>	:	:	:	:	:	
	<u>DL spreading code id #1</u>	:	<u>m</u>	:	:	:	:	:	
	___:								
	<u>DL spreading code id #m</u>	:	<u>m</u>	:	:	:	:	:	
	___:								
	<u>Radio Link ID</u>	:	<u>o</u>	:	:	:	:	:	
	<u>Neighbor Cell Information</u>	:	:	:	:	:	:	:	<u>FFS</u>
	<u>No. of DL spreading code</u>	:	<u>o</u>	:	:	:	:	:	
	<u>DL spreading code id #1</u>	:	<u>o</u>	:	:	:	:	:	
	___:								
	<u>DL spreading code id #m</u>	:	<u>o</u>	:	:	:	:	:	
<u>Execution Time</u>	<u>Execution Time</u>	:	:	<u>m</u>	:	:	:	:	
<u>Offset Values</u>	<u>Slot offset</u>	:	:	:	:	:	:	:	

[UMTS <spec>]

~~TS RAN S3.23 V0.0.21 (1999-02)~~ ~~TS RAN S3.23 V0.0.21 (1999-02)~~ ~~TS RAN S3.23 V0.0.2 (1999-02)~~

	Frame offset	:	:	:	:	:	:	:	
<u>Power Control Info</u>	<u>Initial DL Power</u>	:	:	:	:	:	:	:	<u>For Initial DL Power Setting</u>
	<u>DL Power Range</u>	:	:	:	:	:	:	:	<u>For Correcting DL Power Drifting during DHO</u>
<u>Outerloop Power Control Info</u>	<u>Target UL Eb/lo</u>	:	:	:	:	:	:	:	<u>For L1 Power Control</u>
<u>Cause</u>	<u>Cause</u>	:	:	:	m	:	:	:	

*1,*2: Same as the previous.

RRC Connection Release

<u>Parameter Category</u>	<u>Iur Parameters</u>	<u>Iur Message</u>		<u>Note</u>
		<u>DCH to IDLE</u>		
		<u>RA</u> <u>DIO</u> <u>LIN</u> <u>K</u>	<u>RA</u> <u>DIO</u> <u>LIN</u> <u>K</u>	
		<u>DEL</u> <u>ETI</u> <u>ON</u>	<u>DEL</u> <u>ETI</u> <u>ON</u>	
			<u>RES</u> <u>PO</u> <u>NSE</u>	
<u>Transport CH Info</u>	<u>No. of DCHs</u>	:	:	
	<u>DCH ID (# 1)</u>	:	:	<u>DCH ID or each DCH</u>
	<u>TFS (for DCH ID# 1)</u>	:	:	<u>Set TFS when it is required</u>
	<u>—:</u>			
	<u>DCH ID (# n)</u>	:	:	
	<u>TFS (for DCH ID# n)</u>	:	:	
	<u>TFCS (for DCHs)</u>	:	:	<u>Set TFCS per UE</u>
<u>Transport Layer</u>	<u>No. of DCHs</u>	:	:	
<u>Addressing Information</u>				
	<u>DCH ID (# 1)</u>	:	:	
	<u>ATM Binding ID</u>	:	:	<u>(TTC) 1 Binding ID for 1 DCH *1</u>
	<u>ATM Address</u>	:	:	

	<u>___</u> :			
	<u>DCH ID (# n)</u>	-	-	
	<u>ATM Binding ID</u>	-	-	
	<u>ATM Address</u>	-	-	
<u>Radio Frequency Info</u>	<u>Radio Frequency</u>	-	-	<u>Set Radio Frequency per UE</u>
	<u>UL Interference Level</u>	-	-	
<u>UL Radio Resources</u>	<u>UL scrambling code</u>	-	-	<u>Set UL Scrambling Code per UE</u>
	<u>UL spreading code type</u>	-	-	
	<u>No. of UL spreading code</u>	-	-	
	<u>UL spreading code id(s)</u>	-	-	
<u>DL Radio Resources</u>	<u>DL spreading code type</u>	-	-	<u>Same code type for all Radio Links</u>
	<u>No. of DL spreading code</u>	-	-	<u>Same number of codes for all Radio Links</u>
	<u>No. of Radio Links</u>	<u>m</u>	-	
	<u>Radio Link ID</u>	<u>m</u>	-	
	<u>Cell ID</u>	-	-	
	<u>Soft Combination Indicator</u>	-	-	<u>Indicates May, Must, Must not</u>
	<u>Phase Difference</u>	-	-	
	<u>___</u> :			
	<u>Radio Link ID</u>	<u>o</u>	-	
	<u>Cell ID</u>	-	-	
	<u>Soft Combination Indicator</u>	-	-	

	<u>Phase Difference</u>	:	:	
<u>DL Radio Resources</u>	<u>No. of Radio Links</u>	:	:	
	<u>Radio Link ID</u>	:	:	
	<u>Neighbor Cell Information</u>	:	:	<u>FFS*2</u>
	<u>No. of DL spreading code</u>	:	:	
	<u>DL spreading code id #1</u>	:	:	
	<u>___:</u>			
	<u>DL spreading code id #m</u>	:	:	
	<u>___:</u>			
	<u>Radio Link ID</u>	:	:	
	<u>Neighbor Cell Information</u>	:	:	<u>FFS</u>
	<u>No. of DL spreading code</u>	:	:	
	<u>DL spreading code id #1</u>	:	:	
	<u>___:</u>			
	<u>DL spreading code id #m</u>	:	:	
<u>Execution Time</u>	<u>Execution Time</u>	:	:	
<u>Offset Values</u>	<u>Slot offset</u>	:	:	
	<u>Frame offset</u>	:	:	
<u>Power Control Info</u>	<u>Initial DL Power</u>	:	:	<u>For Initial DL Power Setting</u>
	<u>DL Power Range</u>	:	:	<u>For Correcting DL Power Drifting during DHO</u>
<u>Outerloop Power Control Info</u>	<u>Target UL Eb/Io</u>	:	:	<u>For L1 Power Control</u>

[UMTS <spec>]

*1, *2: Same as the previous.

~~TS RAN S3.23 V0.0.21 (1999-02) TS RAN S3.23 V0.0.21 (1999-02) TS RAN S3.23 V0.0.2 (1999-02)~~

Transport CH Reconfiguration

<u>Parameter Category</u>	<u>Iur Parameters</u>	<u>Iur Message</u>							<u>Note</u>
		<u>DCH to DCH</u>					<u>DCH to RA/FACH</u>		
		<u>RA DIO LINK</u>	<u>RA DIO LINK</u>	<u>RA DIO LINK</u>	<u>RA DIO LINK</u>	<u>RA DIO LINK</u>	<u>RA DIO LINK</u>	<u>RA DIO LINK</u>	
		<u>RECOGNITION</u>	<u>RECOGNITION</u>	<u>RECOGNITION</u>	<u>RECOGNITION</u>	<u>RECOGNITION</u>	<u>DELETION</u>	<u>DELETION</u>	
		<u>PREPARATION</u>	<u>READY</u>	<u>COMMIT</u>	<u>FAILURE</u>	<u>CANCELS (FFS)</u>		<u>RESPONSE</u>	
<u>Transport CH Info</u>	<u>No. of DCHs</u>	<u>m</u>	<u>:</u>	<u>:</u>	<u>:</u>	<u>:</u>	<u>:</u>	<u>:</u>	
	<u>DCH ID (# 1)</u>	<u>m</u>	<u>:</u>	<u>:</u>	<u>:</u>	<u>:</u>	<u>:</u>	<u>:</u>	<u>DCH ID or each DCH</u>
	<u>TFS (for DCH ID# 1)</u>	<u>m</u>	<u>:</u>	<u>:</u>	<u>:</u>	<u>:</u>	<u>:</u>	<u>:</u>	<u>Set TFS when it is required</u>
	<u>—:</u>								
	<u>DCH ID (# n)</u>	<u>m</u>	<u>:</u>	<u>:</u>	<u>:</u>	<u>:</u>	<u>:</u>	<u>:</u>	
	<u>TFS (for DCH ID# n)</u>	<u>m</u>	<u>:</u>	<u>:</u>	<u>:</u>	<u>:</u>	<u>:</u>	<u>:</u>	
	<u>TFCS (for DCHs)</u>	<u>m</u>	<u>:</u>	<u>:</u>	<u>:</u>	<u>:</u>	<u>:</u>	<u>:</u>	<u>Set TFCS per UE</u>

<u>Transport Layer</u>	<u>No. of DCHs</u>	-	<u>m</u>	-	-	-	-	-	
<u>Addressing Information</u>									
	<u>DCH ID (# 1)</u>	-	<u>m</u>	-	-	-	-	-	
	<u>ATM Binding ID</u>	-	<u>m</u>	-	-	-	-	-	<u>(TTC) 1 Binding ID for 1 DCH *1</u>
	<u>ATM Address</u>	-	<u>o</u>	-	-	-	-	-	
	<u>⋮</u>								
	<u>DCH ID (# n)</u>	-	<u>m</u>	-	-	-	-	-	
	<u>ATM Binding ID</u>	-	<u>m</u>	-	-	-	-	-	
	<u>ATM Address</u>	-	<u>o</u>	-	-	-	-	-	
<u>Radio Frequency Info</u>	<u>Radio Frequency</u>	-	-	-	-	-	-	-	<u>Set Radio Frequency per UE</u>
	<u>UL Interference Level</u>	-	-	-	-	-	-	-	
<u>UL Radio Resources</u>	<u>UL scrambling code</u>	-	-	-	-	-	-	-	<u>Set UL Scrambling Code per UE</u>
	<u>UL spreading code type</u>	<u>m</u>	-	-	-	-	-	-	
	<u>No. of UL spreading code</u>	<u>m</u>	-	-	-	-	-	-	
	<u>UL spreading code id(s)</u>	<u>m</u>	-	-	-	-	-	-	
<u>DL Radio Resources</u>	<u>DL spreading code type</u>	<u>m</u>	-	-	-	-	-	-	<u>Same code type for all Radio Links</u>
	<u>No. of DL spreading code</u>	<u>m</u>	-	-	-	-	-	-	<u>Same number of codes for all Radio Links</u>
	<u>No. of Radio Links</u>	<u>m</u>	-	-	-	-	<u>m</u>	-	
	<u>Radio Link ID</u>	<u>m</u>	-	-	-	-	<u>m</u>	-	
	<u>Cell ID</u>	-	-	-	-	-	-	-	
	<u>Soft Combination Indicator</u>	-	-	-	-	-	-	-	<u>Indicates May, Must, Must not</u>

	<u>Phase Difference</u>	:	:	:	:	:	:	:	
	___:								
	<u>Radio Link ID</u>	<u>o</u>	:	:	:	:	<u>o</u>	:	
	<u>Cell ID</u>	:	:	:	:	:	:	:	
	<u>Soft Combination Indicator</u>	:	:	:	:	:	:	:	
	<u>Phase Difference</u>	:	:	:	:	:	:	:	
<u>DL Radio Resources</u>	<u>No. of Radio Links</u>	:	<u>m</u>	:	:	:	:	:	
	<u>Radio Link ID</u>	:	<u>m</u>	:	:	:	:	:	
	<u>Neighbor Cell Information</u>	:	:	:	:	:	:	:	<u>FFS*2</u>
	<u>No. of DL spreading code</u>	:	<u>m</u>	:	:	:	:	:	
	<u>DL spreading code id #1</u>	:	<u>m</u>	:	:	:	:	:	
	___:								
	<u>DL spreading code id #m</u>	:	<u>m</u>	:	:	:	:	:	
	___:								
	<u>Radio Link ID</u>	:	<u>o</u>	:	:	:	:	:	
	<u>Neighbor Cell Information</u>	:	:	:	:	:	:	:	<u>FFS</u>
	<u>No. of DL spreading code</u>	:	<u>o</u>	:	:	:	:	:	
	<u>DL spreading code id #1</u>	:	<u>o</u>	:	:	:	:	:	
	___:								
	<u>DL spreading code id #m</u>	:	<u>o</u>	:	:	:	:	:	
<u>Execution Time</u>	<u>Execution Time</u>	:	:	<u>m</u>	:	:	:	:	
<u>Offset Values</u>	<u>Slot offset</u>	:	:	:	:	:	:	:	

[UMTS <spec>]

~~TS RAN S3.23 V0.0.21 (1999-02)~~ ~~TS RAN S3.23 V0.0.21 (1999-02)~~ ~~TS RAN S3.23 V0.0.2 (1999-02)~~

	Frame offset	:	:	:	:	:	:	:	
<u>Power Control Info</u>	<u>Initial DL Power</u>	:	:	:	:	:	:	:	<u>For Initial DL Power Setting</u>
	<u>DL Power Range</u>	:	:	:	:	:	:	:	<u>For Correcting DL Power Drifting during DHO</u>
<u>Outerloop Power Control Info</u>	<u>Target UL Eb/lo</u>	:	:	:	:	:	:	:	<u>For L1 Power Control</u>
<u>Cause</u>	<u>Cause</u>	:	:	:	m	:	:	:	

*1,*2: Same as the previous.

Physical CH Reconfiguration

<u>Parameter Category</u>	<u>lur Parameters</u>	<u>lur Message</u>							<u>Note</u>
		<u>DCH to DCH</u>					<u>DCH to RA/FACH</u>		
		<u>RA DIO LINK</u>	<u>RA DIO LINK</u>	<u>RA DIO LINK</u>	<u>RA DIO LINK</u>	<u>RA DIO LINK</u>	<u>RA DIO LINK</u>	<u>RA DIO LINK</u>	
		<u>RECOGNITION</u>	<u>RECOGNITION</u>	<u>RECOGNITION</u>	<u>RECOGNITION</u>	<u>RECOGNITION</u>	<u>DELETION</u>	<u>DELETION</u>	
		<u>PREPARATION</u>	<u>READY</u>	<u>COMMIT</u>	<u>FAILURE</u>	<u>CANCELS (FFS)</u>		<u>RESPONSE</u>	
<u>Transport CH Info</u>	<u>No. of DCHs</u>	:	:	:	:	:	:	:	
	<u>DCH ID (# 1)</u>	:	:	:	:	:	:	:	<u>DCH ID or each DCH</u>
	<u>TFS (for DCH ID# 1)</u>	:	:	:	:	:	:	:	<u>Set TFS when it is required</u>
	<u>—:</u>	:							
	<u>DCH ID (# n)</u>		:	:	:	:	:	:	
	<u>TFS (for DCH ID# n)</u>	:	:	:	:	:	:	:	
	<u>TFCS (for DCHs)</u>	:	:	:	:	:	:	:	<u>Set TFCS per UE</u>

<u>Transport Layer</u>	<u>No. of DCHs</u>	-	-	-	-	-	-	-	
<u>Addressing Information</u>									
	<u>DCH ID (# 1)</u>	-	-	-	-	-	-	-	
	<u>ATM Binding ID</u>	-	-	-	-	-	-	-	<u>(TTC) 1 Binding ID for 1 DCH *1</u>
	<u>ATM Address</u>	-	-	-	-	-	-	-	
	<u>⋮</u>								
	<u>DCH ID (# n)</u>	-	-	-	-	-	-	-	
	<u>ATM Binding ID</u>	-	-	-	-	-	-	-	
	<u>ATM Address</u>	-	-	-	-	-	-	-	
<u>Radio Frequency Info</u>	<u>Radio Frequency</u>	-	-	-	-	-	-	-	<u>Set Radio Frequency per UE</u>
	<u>UL Interference Level</u>	-	-	-	-	-	-	-	
<u>UL Radio Resources</u>	<u>UL scrambling code</u>	o	-	-	-	-	-	-	<u>Set UL Scrambling Code per UE</u>
	<u>UL spreading code type</u>	o	-	-	-	-	-	-	
	<u>No. of UL spreading code</u>	o	-	-	-	-	-	-	
	<u>UL spreading code id(s)</u>	o	-	-	-	-	-	-	
<u>DL Radio Resources</u>	<u>DL spreading code type</u>	o	-	-	-	-	-	-	<u>Same code type for all Radio Links</u>
	<u>No. of DL spreading code</u>	o	-	-	-	-	-	-	<u>Same number of codes for all Radio Links</u>
	<u>No. of Radio Links</u>	o	-	-	-	-	m	-	
	<u>Radio Link ID</u>	o	-	-	-	-	m	-	
	<u>Cell ID</u>	-	-	-	-	-	-	-	
	<u>Soft Combination Indicator</u>	-	-	-	-	-	-	-	<u>Indicates May, Must, Must not</u>

	<u>Phase Difference</u>	:	:	:	:	:	:	:	
	___:								
	<u>Radio Link ID</u>	<u>o</u>	:	:	:	:	<u>o</u>	:	
	<u>Cell ID</u>	:	:	:	:	:	:	:	
	<u>Soft Combination Indicator</u>	:	:	:	:	:	:	:	
	<u>Phase Difference</u>	:	:	:	:	:	:	:	
<u>DL Radio Resources</u>	<u>No. of Radio Links</u>	:	<u>m</u>	:	:	:	:	:	
	<u>Radio Link ID</u>	:	<u>m</u>	:	:	:	:	:	
	<u>Neighbor Cell Information</u>	:	:	:	:	:	:	:	<u>FFS*2</u>
	<u>No. of DL spreading code</u>	:	<u>m</u>	:	:	:	:	:	
	<u>DL spreading code id #1</u>	:	<u>m</u>	:	:	:	:	:	
	___:								
	<u>DL spreading code id #m</u>	:	<u>m</u>	:	:	:	:	:	
	___:								
	<u>Radio Link ID</u>	:	<u>o</u>	:	:	:	:	:	
	<u>Neighbor Cell Information</u>	:	:	:	:	:	:	:	<u>FFS</u>
	<u>No. of DL spreading code</u>	:	<u>o</u>	:	:	:	:	:	
	<u>DL spreading code id #1</u>	:	<u>o</u>	:	:	:	:	:	
	___:								
	<u>DL spreading code id #m</u>	:	<u>o</u>	:	:	:	:	:	
<u>Execution Time</u>	<u>Execution Time</u>	:	:	<u>m</u>	:	:	:	:	
<u>Offset Values</u>	<u>Slot offset</u>	:	:	:	:	:	:	:	

[UMTS <spec>]

~~TS RAN S3.23 V0.0.21 (1999-02)~~~~TS RAN S3.23 V0.0.21 (1999-02)~~~~TS RAN S3.23 V0.0.2 (1999-02)~~

	Frame offset	:	:	:	:	:	:	:	
<u>Power Control Info</u>	<u>Initial DL Power</u>	:	:	:	:	:	:	:	<u>For Initial DL Power Setting</u>
	<u>DL Power Range</u>	:	:	:	:	:	:	:	<u>For Correcting DL Power Drifting during DHO</u>
<u>Outerloop Power Control Info</u>	<u>Target UL Eb/lo</u>	:	:	:	:	:	:	:	<u>For L1 Power Control</u>
<u>Cause</u>	<u>Cause</u>	:	:	:	m	:	:	:	

*1,*2: Same as the previous.

Cell Update

Parameter Category	Iur Parameters	Iur Message			Note
		RN C REL OC ATI ON RE QU EST	DL USE R DAT A RET RIE VAL (FF S)	DL USE R DAT A RET RIE VAL RES PO NSE (FF S)	
<u>DL Radio Resources</u>	<u>DL spreading code type</u>	-	-	-	<u>Same code type for all Radio Links</u>
	<u>No. of DL spreading code</u>	-	-	-	<u>Same number of codes for all Radio Links</u>
	<u>No. of Radio Links</u>	m	-	-	
	<u>Radio Link ID</u>	m	-	-	
	<u>Cell ID</u>	-	-	-	
	<u>Soft Combination Indicator</u>	-	-	-	<u>Indicates May, Must, Must not</u>
	<u>Phase Difference</u>	-	-	-	
	___:				
	<u>Radio Link ID</u>	o	-	-	
	<u>Cell ID</u>	-	-	-	
	<u>Soft Combination Indicator</u>	-	-	-	

[UMTS <spec>]

~~TS RAN S3.23 V0.0.21 (1999-02)~~ ~~TS RAN S3.23 V0.0.21 (1999-02)~~ ~~TS RAN S3.23 V0.0.2 (1999-02)~~

	<u>Phase Difference</u>	:	:	:	
<u>Outerloop Power Control Info</u>	<u>Target UL Eb/lo</u>	:	:	:	<u>For L1 Power Control</u>
<u>Signaling Address</u>	<u>Signaling Adress</u>	<u>m</u>	:	:	
<u>RNTI</u>	<u>RNTI</u>	<u>m</u>	<u>m</u>	:	
<u>URA ID</u>	<u>URA ID</u>	<u>m</u>	<u>m</u>	:	

URA Update

<u>Parameter Category</u>	<u>Iur Parameters</u>	<u>Iur Message</u>			<u>Note</u>
		<u>RN</u> <u>C</u> <u>REL</u> <u>OC</u> <u>ATI</u> <u>ON</u> <u>RE</u> <u>QU</u> <u>EST</u>	<u>DL</u> <u>USE</u> <u>R</u> <u>DAT</u> <u>A</u> <u>RET</u> <u>RIE</u> <u>VAL</u> (<u>FF</u> <u>S</u>)	<u>DL</u> <u>USE</u> <u>R</u> <u>DAT</u> <u>A</u> <u>RET</u> <u>RIE</u> <u>VAL</u> <u>RES</u> <u>PO</u> <u>NSE</u> (<u>FF</u> <u>S</u>)	
<u>DL Radio Resources</u>	<u>DL spreading code type</u>	-	-	-	<u>Same code type for all Radio Links</u>
	<u>No. of DL spreading code</u>	-	-	-	<u>Same number of codes for all Radio Links</u>
	<u>No. of Radio Links</u>	<u>m</u>	-	-	
	<u>Radio Link ID</u>	<u>m</u>	-	-	
	<u>Cell ID</u>	-	-	-	
	<u>Soft Combination Indicator</u>	-	-	-	<u>Indicates May, Must, Must not</u>
	<u>Phase Difference</u>	-	-	-	
	<u>___:</u>				
	<u>Radio Link ID</u>	<u>o</u>	-	-	
	<u>Cell ID</u>	-	-	-	
	<u>Soft Combination Indicator</u>	-	-	-	

[UMTS <spec>]

~~TS RAN S3.23 V0.0.21 (1999-02)~~ ~~TS RAN S3.23 V0.0.21 (1999-02)~~ ~~TS RAN S3.23 V0.0.2 (1999-02)~~

	<u>Phase Difference</u>	:	:	:	
<u>Signaling Address</u>	<u>Signaling Address</u>	<u>m</u>	:	:	
<u>RNTI</u>	<u>RNTI</u>	<u>m</u>	<u>m</u>	:	
<u>URA ID</u>	<u>URA ID</u>	<u>m</u>	<u>m</u>	:	

Hard Handover (Inter-NodeB)

Parameter Category	Iur Parameters	Iur Message					Note
		RA DIO LIN K SET UP	RA DIO LIN K SET UP RES PO NSE	RA DIO LIN K SET UP FAI LUR E	RA DIO LIN K DEL ETI ON	RA DIO LIN K DEL ETI ON RES PO NSE	
Transport CH Info	No. of DCHs	m	:	:	:	:	
	DCH ID (# 1)	m	:	:	:	:	DCH ID or each DCH
	TFS (for DCH ID# 1)	m	:	:	:	:	Set TFS when it is required
	—:						
	DCH ID (# n)	m	:	:	:	:	
	TFS (for DCH ID# n)	m	:	:	:	:	
	TFCS (for DCHs)	m	:	:	:	:	Set TFCS per UE
Transport Layer Addressing Information	No. of DCHs	:	m		:	:	
	DCH ID (# 1)	:	m	:	:	:	
	ATM Binding ID	:	m	:	:	:	(TTC) 1 Binding ID for 1 DCH *1
	ATM Address	:	o	:	:	:	
	—:						

	<u>DCH ID (# n)</u>	-	<u>m</u>	-	-	-	
	<u>ATM Binding ID</u>	-	<u>m</u>	-	-	-	
	<u>ATM Address</u>	-	<u>o</u>	-	-	-	
<u>Radio Frequency Info</u>	<u>Radio Frequency</u>	<u>m</u>	-	-	-	-	<u>Set Radio Frequency per UE</u>
	<u>UL Interference Level</u>	-	<u>m</u>	-	-	-	
<u>UL Radio Resources</u>	<u>UL scrambling code</u>	<u>m</u>	-	-	-	-	<u>Set UL Scrambling Code per UE</u>
	<u>UL spreading code type</u>	<u>m</u>	-	-	-	-	
	<u>No. of UL spreading code</u>	<u>m</u>	-	-	-	-	
	<u>UL spreading code id(s)</u>	<u>m</u>	-	-	-	-	
<u>DL Radio Resources</u>	<u>DL spreading code type</u>	<u>m</u>	-	-	-	-	<u>Same code type for all Radio Links</u>
	<u>No. of DL spreading code</u>	<u>m</u>	-	-	-	-	<u>Same number of codes for all Radio Links</u>
	<u>No. of Radio Links</u>	<u>m</u>	-	-	<u>m</u>	-	
	<u>Radio Link ID</u>	<u>m</u>	-	-	<u>m</u>	-	
	<u>Cell ID</u>	<u>m</u>	-	-	-	-	
	<u>Soft Combination Indicator</u>	-	-	-	-	-	<u>Indicates May, Must, Must not</u>
	<u>Phase Difference</u>	<u>m</u>	-	-	-	-	
	<u>___:</u>						
	<u>Radio Link ID</u>	<u>o</u>	-	-	<u>o</u>	-	
	<u>Cell ID</u>	<u>o</u>	-	-	-	-	
	<u>Soft Combination Indicator</u>	<u>o</u>	-	-	-	-	
	<u>Phase Difference</u>	<u>o</u>	-	-	-	-	

<u>DL Radio Resources</u>	<u>No. of Radio Links</u>	-	<u>m</u>	-	-	-	
	<u>Radio Link ID</u>	-	<u>m</u>	-	-	-	
	<u>Neighbor Cell Information</u>	-	<u>m</u>	-	-	-	<u>FFS*2</u>
	<u>No. of DL spreading code</u>	-	<u>m</u>	-	-	-	
	<u>DL spreading code id #1</u>	-	<u>m</u>	-	-	-	
	___:						
	<u>DL spreading code id #m</u>	-	<u>m</u>	-	-	-	
	___:						
	<u>Radio Link ID</u>	-	<u>o</u>	-	-	-	
	<u>Neighbor Cell Information</u>	-	<u>o</u>	-	-	-	<u>FFS</u>
	<u>No. of DL spreading code</u>	-	<u>o</u>	-	-	-	
	<u>DL spreading code id #1</u>	-	<u>o</u>	-	-	-	
	___:						
	<u>DL spreading code id #m</u>	-	<u>o</u>	-	-	-	
<u>Execution Time</u>	<u>Execution Time</u>	-	-	-	-	-	
<u>Offset Values</u>	<u>Slot offset</u>	<u>m</u>	-	-	-	-	
	<u>Frame offset</u>	<u>m</u>	-	-	-	-	
<u>Power Control Info</u>	<u>Initial DL Power</u>	<u>m</u>	-	-	-	-	<u>For Initial DL Power Setting</u>
	<u>DL Power Range</u>	-	-	-	-	-	<u>For Correcting DL Power Drifting during DHO</u>
<u>Outerloop Power Control Info</u>	<u>Target UL Eb/lo</u>	<u>m</u>	-	-	-	-	<u>For L1 Power Control</u>
<u>Cause</u>	<u>Cause</u>	-	-	<u>m</u>	-	-	

[UMTS <spec>]

*1, *2: Same as the previous.

TS RAN S3.71 V0.0.21 (1999-02) TS RAN S3.23 V0.0.21 (1999-02) TS RAN S3.23 V0.0.2 (1999-02)

Hard Handover (Intra-NodeB)

<u>Parameter Category</u>	<u>Iur Parameters</u>	<u>Iur Message</u>					<u>Note</u>
		<u>RA</u> <u>DIO</u> <u>LIN</u> <u>K</u>	<u>RA</u> <u>DIO</u> <u>LIN</u> <u>K</u>	<u>RA</u> <u>DIO</u> <u>LIN</u> <u>K</u>	<u>RA</u> <u>DIO</u> <u>LIN</u> <u>K</u>	<u>RA</u> <u>DIO</u> <u>LIN</u> <u>K</u>	
		<u>AD</u> <u>DITI</u> <u>ON</u>	<u>AD</u> <u>DITI</u> <u>ON</u>	<u>AD</u> <u>DITI</u> <u>ON</u>	<u>DEL</u> <u>ETI</u> <u>ON</u>	<u>DEL</u> <u>ETI</u> <u>ON</u>	
			<u>RES</u> <u>PO</u> <u>NSE</u>	<u>FAI</u> <u>LUR</u> <u>E</u>		<u>RES</u> <u>PO</u> <u>NSE</u>	
<u>Transport CH Info</u>	<u>No. of DCHs</u>	-	-	-	-	-	
	<u>DCH ID (# 1)</u>	-	-	-	-	-	<u>DCH ID or each DCH</u>
	<u>TFS (for DCH ID# 1)</u>	-	-	-	-	-	<u>Set TFS when it is required</u>
	<u>—:</u>						
	<u>DCH ID (# n)</u>	-	-	-	-	-	
	<u>TFS (for DCH ID# n)</u>	-	-	-	-	-	
	<u>TFCS (for DCHs)</u>	-	-	-	-	-	<u>Set TFCS per UE</u>
<u>Transport Layer</u>	<u>No. of DCHs</u>	-	<u>m</u>	-	-	-	
<u>Addressing Information</u>							
	<u>DCH ID (# 1)</u>	-	<u>m</u>	-	-	-	
	<u>ATM Binding ID</u>	-	<u>m</u>	-	-	-	<u>(TTC) 1 Binding ID for 1 DCH *1</u>
	<u>ATM Address</u>	-	<u>o</u>	-	-	-	
	<u>—:</u>						

	<u>DCH ID (# n)</u>	-	<u>m</u>	-	-	-	
	<u>ATM Binding ID</u>	-	<u>m</u>	-	-	-	
	<u>ATM Address</u>	-	<u>o</u>	-	-	-	
<u>Radio Frequency Info</u>	<u>Radio Frequency</u>	<u>o</u>	-	-	-	-	<u>Set Radio Frequency per UE</u>
	<u>UL Interference Level</u>	-	<u>m</u>	-	-	-	
<u>UL Radio Resources</u>	<u>UL scrambling code</u>	-	-	-	-	-	<u>Set UL Scrambling Code per UE</u>
	<u>UL spreading code type</u>	-	-	-	-	-	
	<u>No. of UL spreading code</u>	-	-	-	-	-	
	<u>UL spreading code id(s)</u>	-	-	-	-	-	
<u>DL Radio Resources</u>	<u>DL spreading code type</u>	-	-	-	-	-	<u>Same code type for all Radio Links</u>
	<u>No. of DL spreading code</u>	-	-	-	-	-	<u>Same number of codes for all Radio Links</u>
	<u>No. of Radio Links</u>	<u>m</u>	-	-	<u>m</u>	-	
	<u>Radio Link ID</u>	<u>m</u>	-	-	<u>m</u>	-	
	<u>Cell ID</u>	<u>m</u>	-	-	-	-	
	<u>Soft Combination Indicator</u>	<u>m</u>	-	-	-	-	<u>Indicates May, Must, Must not</u>
	<u>Phase Difference</u>	<u>m</u>	-	-	-	-	
	<u>___:</u>						
	<u>Radio Link ID</u>	<u>o</u>	-	-	<u>o</u>	-	
	<u>Cell ID</u>	<u>o</u>	-	-	-	-	
	<u>Soft Combination Indicator</u>	<u>o</u>	-	-	-	-	
	<u>Phase Difference</u>	<u>o</u>	-	-	-	-	

<u>DL Radio Resources</u>	<u>No. of Radio Links</u>	:	<u>m</u>	:	:	:	
	<u>Radio Link ID</u>	:	<u>m</u>	:	:	:	
	<u>Neighbor Cell Information</u>	:	<u>m</u>	:	:	:	<u>FFS*2</u>
	<u>No. of DL spreading code</u>	:	<u>m</u>	:	:	:	
	<u>DL spreading code id #1</u>	:	<u>m</u>	:	:	:	
	___:						
	<u>DL spreading code id #m</u>	:	<u>m</u>	:	:	:	
	___:						
	<u>Radio Link ID</u>	:	<u>o</u>	:	:	:	
	<u>Neighbor Cell Information</u>	:	<u>o</u>	:	:	:	<u>FFS</u>
	<u>No. of DL spreading code</u>	:	<u>o</u>	:	:	:	
	<u>DL spreading code id #1</u>	:	<u>o</u>	:	:	:	
	___:						
	<u>DL spreading code id #m</u>	:	<u>o</u>	:	:	:	
<u>Execution Time</u>	<u>Execution Time</u>	:	:	:	:	:	
<u>Offset Values</u>	<u>Slot offset</u>	:	:	:	:	:	
	<u>Frame offset</u>	:	:	:	:	:	
<u>Power Control Info</u>	<u>Initial DL Power</u>	:	:	:	:	:	<u>For Initial DL Power Setting</u>
	<u>DL Power Range</u>	:	:	:	:	:	<u>For Correcting DL Power Drifting during DHO</u>
<u>Outerloop Power Control Info</u>	<u>Target UL Eb/lo</u>	:	:	:	:	:	<u>For L1 Power Control</u>
<u>Cause</u>	<u>Cause</u>	:	:	<u>m</u>	:	:	

[UMTS <spec>]

*1, *2: Same as the previous.

~~TS RAN S3.75 V0.0.21 (1999-02) TS RAN S3.23 V0.0.21 (1999-02) TS RAN S3.23 V0.0.2 (1999-02)~~

Handover Radio Link Addition (Inter-NodeB)

<u>Parameter Category</u>	<u>Iur Parameters</u>	<u>Iur Message</u>			<u>Note</u>
		<u>RA</u> <u>DIO</u> <u>LIN</u> <u>K</u>	<u>RA</u> <u>DIO</u> <u>LIN</u> <u>K</u>	<u>RA</u> <u>DIO</u> <u>LIN</u> <u>K</u>	
		<u>SET</u> <u>UP</u>	<u>SET</u> <u>UP</u>	<u>SET</u> <u>UP</u>	
			<u>RES</u> <u>PO</u> <u>NSE</u>	<u>FAI</u> <u>LUR</u> <u>E</u>	
<u>Transport CH Info</u>	<u>No. of DCHs</u>	<u>m</u>	<u>:</u>	<u>:</u>	
	<u>DCH ID (# 1)</u>	<u>m</u>	<u>:</u>	<u>:</u>	<u>DCH ID or each DCH</u>
	<u>TFS (for DCH ID# 1)</u>	<u>m</u>	<u>:</u>	<u>:</u>	<u>Set TFS when it is required</u>
	<u>—:</u>				
	<u>DCH ID (# n)</u>	<u>m</u>	<u>:</u>	<u>:</u>	
	<u>TFS (for DCH ID# n)</u>	<u>m</u>	<u>:</u>	<u>:</u>	
	<u>TFCS (for DCHs)</u>	<u>m</u>	<u>:</u>	<u>:</u>	<u>Set TFCS per UE</u>
<u>Transport Layer</u>	<u>No. of DCHs</u>	<u>:</u>	<u>m</u>	<u>:</u>	
<u>Addressing Information</u>					
	<u>DCH ID (# 1)</u>	<u>:</u>	<u>m</u>	<u>:</u>	
	<u>ATM Binding ID</u>	<u>:</u>	<u>m</u>	<u>:</u>	<u>(TTC) 1 Binding ID for 1 DCH *1</u>
	<u>ATM Address</u>	<u>:</u>	<u>o</u>	<u>:</u>	
	<u>—:</u>				

	<u>DCH ID (# n)</u>	-	<u>m</u>	-	
	<u>ATM Binding ID</u>	-	<u>m</u>	-	
	<u>ATM Address</u>	-	<u>o</u>	-	
<u>Radio Frequency Info</u>	<u>Radio Frequency</u>	<u>m</u>	-	-	<u>Set Radio Frequency per UE</u>
	<u>UL Interference Level</u>	-	<u>m</u>	-	
<u>UL Radio Resources</u>	<u>UL scrambling code</u>	<u>m</u>	-	-	<u>Set UL Scrambling Code per UE</u>
	<u>UL spreading code type</u>	<u>m</u>	-	-	
	<u>No. of UL spreading code</u>	<u>m</u>	-	-	
	<u>UL spreading code id(s)</u>	<u>m</u>	-	-	
<u>DL Radio Resources</u>	<u>DL spreading code type</u>	<u>m</u>	-	-	<u>Same code type for all Radio Links</u>
	<u>No. of DL spreading code</u>	<u>m</u>	-	-	<u>Same number of codes for all Radio Links</u>
	<u>No. of Radio Links</u>	<u>m</u>	-	-	
	<u>Radio Link ID</u>	<u>m</u>	-	-	
	<u>Cell ID</u>	<u>m</u>	-	-	
	<u>Soft Combination Indicator</u>	-	-	-	<u>Indicates May, Must, Must not</u>
	<u>Phase Difference</u>	<u>m</u>	-	-	
	<u>___:</u>				
	<u>Radio Link ID</u>	<u>o</u>	-	-	
	<u>Cell ID</u>	<u>o</u>	-	-	
	<u>Soft Combination Indicator</u>	<u>o</u>	-	-	
	<u>Phase Difference</u>	<u>o</u>	-	-	

<u>DL Radio Resources</u>	<u>No. of Radio Links</u>	-	<u>m</u>	-	
	<u>Radio Link ID</u>	-	<u>m</u>	-	
	<u>Neighbor Cell Information</u>	-	<u>m</u>	-	FFS*2
	<u>No. of DL spreading code</u>	-	<u>m</u>	-	
	<u>DL spreading code id #1</u>	-	<u>m</u>	-	
	___:				
	<u>DL spreading code id #m</u>	-	<u>m</u>	-	
	___:				
	<u>Radio Link ID</u>	-	<u>o</u>	-	
	<u>Neighbor Cell Information</u>	-	<u>o</u>	-	FFS
	<u>No. of DL spreading code</u>	-	<u>o</u>	-	
	<u>DL spreading code id #1</u>	-	<u>o</u>	-	
	___:				
	<u>DL spreading code id #m</u>	-	<u>o</u>	-	
<u>Execution Time</u>	<u>Execution Time</u>	-	-	-	
<u>Offset Values</u>	<u>Slot offset</u>	<u>m</u>	-	-	
	<u>Frame offset</u>	<u>m</u>	-	-	
<u>Power Control Info</u>	<u>Initial DL Power</u>	<u>m</u>	-	-	<u>For Initial DL Power Setting</u>
	<u>DL Power Range</u>	-	-	-	<u>For Correcting DL Power Drifting during DHO</u>
<u>Outerloop Power Control Info</u>	<u>Target UL Eb/Io</u>	<u>m</u>	-	-	<u>For L1 Power Control</u>
<u>Cause</u>	<u>Cause</u>	-	-	<u>m</u>	

[UMTS <spec>]

*1, *2: Same as the previous.

~~TS RAN S3.23 V0.0.21 (1999-02) TS RAN S3.23 V0.0.21 (1999-02) TS RAN S3.23 V0.0.2 (1999-02)~~

Handover Radio Link Addition (Intra-NodeB)

Parameter Category	Iur Parameters	Iur Message			Note
		RA DIO LIN K AD DITI ON	RA DIO LIN K AD DITI ON RES PO NSE	RA DIO LIN K AD DITI ON FAI LUR E	
Transport CH Info	No. of DCHs	:	:	:	
	DCH ID (# 1)	:	:	:	DCH ID or each DCH
	TFS (for DCH ID# 1)	:	:	:	Set TFS when it is required
	—:				
	DCH ID (# n)	:	:	:	
	TFS (for DCH ID# n)	:	:	:	
	TFCS (for DCHs)	:	:	:	Set TFCS per UE
Transport Layer Addressing Information	No. of DCHs	:	m	:	
	DCH ID (# 1)	:	m	:	
	ATM Binding ID	:	m	:	(TTC) 1 Binding ID for 1 DCH *1
	ATM Address	:	o	:	
	—:				

	<u>DCH ID (# n)</u>	-	<u>m</u>	-	
	<u>ATM Binding ID</u>	-	<u>m</u>	-	
	<u>ATM Address</u>	-	<u>o</u>	-	
<u>Radio Frequency Info</u>	<u>Radio Frequency</u>	<u>o</u>	-	-	<u>Set Radio Frequency per UE</u>
	<u>UL Interference Level</u>	-	<u>m</u>	-	
<u>UL Radio Resources</u>	<u>UL scrambling code</u>	-	-	-	<u>Set UL Scrambling Code per UE</u>
	<u>UL spreading code type</u>	-	-	-	
	<u>No. of UL spreading code</u>	-	-	-	
	<u>UL spreading code id(s)</u>	-	-	-	
<u>DL Radio Resources</u>	<u>DL spreading code type</u>	-	-	-	<u>Same code type for all Radio Links</u>
	<u>No. of DL spreading code</u>	-	-	-	<u>Same number of codes for all Radio Links</u>
	<u>No. of Radio Links</u>	<u>m</u>	-	-	
	<u>Radio Link ID</u>	<u>m</u>	-	-	
	<u>Cell ID</u>	<u>m</u>	-	-	
	<u>Soft Combination Indicator</u>	<u>m</u>	-	-	<u>Indicates May, Must, Must not</u>
	<u>Phase Difference</u>	<u>m</u>	-	-	
	___:				
	<u>Radio Link ID</u>	<u>o</u>	-	-	
	<u>Cell ID</u>	<u>o</u>	-	-	
	<u>Soft Combination Indicator</u>	<u>o</u>	-	-	
	<u>Phase Difference</u>	<u>o</u>	-	-	

<u>DL Radio Resources</u>	<u>No. of Radio Links</u>	-	<u>m</u>	-	
	<u>Radio Link ID</u>	-	<u>m</u>	-	
	<u>Neighbor Cell Information</u>	-	<u>m</u>	-	FFS*2
	<u>No. of DL spreading code</u>	-	<u>m</u>	-	
	<u>DL spreading code id #1</u>	-	<u>m</u>	-	
	___:				
	<u>DL spreading code id #m</u>	-	<u>m</u>	-	
	___:				
	<u>Radio Link ID</u>	-	<u>o</u>	-	
	<u>Neighbor Cell Information</u>	-	<u>o</u>	-	FFS
	<u>No. of DL spreading code</u>	-	<u>o</u>	-	
	<u>DL spreading code id #1</u>	-	<u>o</u>	-	
	___:				
	<u>DL spreading code id #m</u>	-	<u>o</u>	-	
<u>Execution Time</u>	<u>Execution Time</u>	-	-	-	
<u>Offset Values</u>	<u>Slot offset</u>	-	-	-	
	<u>Frame offset</u>	-	-	-	
<u>Power Control Info</u>	<u>Initial DL Power</u>	-	-	-	<u>For Initial DL Power Setting</u>
	<u>DL Power Range</u>	-	-	-	<u>For Correcting DL Power Drifting during DHO</u>
<u>Outerloop Power Control Info</u>	<u>Target UL Eb/Io</u>	-	-	-	<u>For L1 Power Control</u>
<u>Cause</u>	<u>Cause</u>	-	-	<u>m</u>	

[UMTS <spec>]

*1, *2: Same as the previous.

~~TS RAN S3.23 V0.0.21 (1999-02) TS RAN S3.23 V0.0.21 (1999-02) TS RAN S3.23 V0.0.2 (1999-02)~~

Handover Radio Link Deletion (Inter-NodeB)

<u>Parameter Category</u>	<u>Iur Parameters</u>	<u>Iur Message</u>		<u>Note</u>
		<u>RA</u> <u>DIO</u> <u>LIN</u> <u>K</u>	<u>RA</u> <u>DIO</u> <u>LIN</u> <u>K</u>	
		<u>DEL</u> <u>ETI</u> <u>ON</u>	<u>DEL</u> <u>ETI</u> <u>ON</u>	
			<u>RES</u> <u>PO</u> <u>NSE</u>	
<u>Transport CH Info</u>	<u>No. of DCHs</u>	:	:	
	<u>DCH ID (# 1)</u>	:	:	<u>DCH ID or each DCH</u>
	<u>TFS (for DCH ID# 1)</u>	:	:	<u>Set TFS when it is required</u>
	—:			
	<u>DCH ID (# n)</u>	:	:	
	<u>TFS (for DCH ID# n)</u>	:	:	
	<u>TFCS (for DCHs)</u>	:	:	<u>Set TFCS per UE</u>
<u>Transport Layer</u>	<u>No. of DCHs</u>	:	:	
<u>Addressing Information</u>				
	<u>DCH ID (# 1)</u>	:	:	
	<u>ATM Binding ID</u>	:	:	<u>(TTC) 1 Binding ID for 1 DCH *1</u>
	<u>ATM Address</u>	:	:	
	—:			

	<u>DCH ID (# n)</u>	-	-	
	<u>ATM Binding ID</u>	-	-	
	<u>ATM Address</u>	-	-	
<u>Radio Frequency Info</u>	<u>Radio Frequency</u>	-	-	<u>Set Radio Frequency per UE</u>
	<u>UL Interference Level</u>	-	-	
<u>UL Radio Resources</u>	<u>UL scrambling code</u>	-	-	<u>Set UL Scrambling Code per UE</u>
	<u>UL spreading code type</u>	-	-	
	<u>No. of UL spreading code</u>	-	-	
	<u>UL spreading code id(s)</u>	-	-	
<u>DL Radio Resources</u>	<u>DL spreading code type</u>	-	-	<u>Same code type for all Radio Links</u>
	<u>No. of DL spreading code</u>	-	-	<u>Same number of codes for all Radio Links</u>
	<u>No. of Radio Links</u>	<u>m</u>	-	
	<u>Radio Link ID</u>	<u>m</u>	-	
	<u>Cell ID</u>	-	-	
	<u>Soft Combination Indicator</u>	-	-	<u>Indicates May, Must, Must not</u>
	<u>Phase Difference</u>	-	-	
	<u>___:</u>			
	<u>Radio Link ID</u>	<u>o</u>	-	
	<u>Cell ID</u>	-	-	
	<u>Soft Combination Indicator</u>	-	-	
	<u>Phase Difference</u>	-	-	

<u>DL Radio Resources</u>	<u>No. of Radio Links</u>	-	-	
	<u>Radio Link ID</u>	-	-	
	<u>Neighbor Cell Information</u>	-	-	<u>FFS*2</u>
	<u>No. of DL spreading code</u>	-	-	
	<u>DL spreading code id #1</u>	-	-	
	___:			
	<u>DL spreading code id #m</u>	-	-	
	___:			
	<u>Radio Link ID</u>	-	-	
	<u>Neighbor Cell Information</u>	-	-	<u>FFS</u>
	<u>No. of DL spreading code</u>	-	-	
	<u>DL spreading code id #1</u>	-	-	
	___:			
	<u>DL spreading code id #m</u>	-	-	
<u>Execution Time</u>	<u>Execution Time</u>	-	-	
<u>Offset Values</u>	<u>Slot offset</u>	-	-	
	<u>Frame offset</u>	-	-	
<u>Power Control Info</u>	<u>Initial DL Power</u>	-	-	<u>For Initial DL Power Setting</u>
	<u>DL Power Range</u>	-	-	<u>For Correcting DL Power Drifting during DHO</u>
<u>Outerloop Power Control Info</u>	<u>Target UL Eb/Io</u>	-	-	<u>For L1 Power Control</u>

*1,*2: Same as the previous.

[UMTS <spec>]

TS RAN S3.23 V0.0.21 (1999-02) TS RAN S3.23 V0.0.21 (1999-02) TS RAN S3.23 V0.0.2 (1999-02)

Handover Radio Link Deletion (Intra-NodeB)

<u>Parameter Category</u>	<u>Iur Parameters</u>	<u>Iur Message</u>		<u>Note</u>
		<u>RA</u> <u>DIO</u> <u>LIN</u> <u>K</u>	<u>RA</u> <u>DIO</u> <u>LIN</u> <u>K</u>	
		<u>DEL</u> <u>ETI</u> <u>ON</u>	<u>DEL</u> <u>ETI</u> <u>ON</u>	
			<u>RES</u> <u>PO</u> <u>NSE</u>	
<u>Transport CH Info</u>	<u>No. of DCHs</u>	:	:	
	<u>DCH ID (# 1)</u>	:	:	<u>DCH ID or each DCH</u>
	<u>TFS (for DCH ID# 1)</u>	:	:	<u>Set TFS when it is required</u>
	—:			
	<u>DCH ID (# n)</u>	:	:	
	<u>TFS (for DCH ID# n)</u>	:	:	
	<u>TFCS (for DCHs)</u>	:	:	<u>Set TFCS per UE</u>
<u>Transport Layer</u>	<u>No. of DCHs</u>	:	:	
<u>Addressing Information</u>				
	<u>DCH ID (# 1)</u>	:	:	
	<u>ATM Binding ID</u>	:	:	<u>(TTC) 1 Binding ID for 1 DCH *1</u>
	<u>ATM Address</u>	:	:	
	—:			

	<u>DCH ID (# n)</u>	-	-	
	<u>ATM Binding ID</u>	-	-	
	<u>ATM Address</u>	-	-	
<u>Radio Frequency Info</u>	<u>Radio Frequency</u>	-	-	<u>Set Radio Frequency per UE</u>
	<u>UL Interference Level</u>	-	-	
<u>UL Radio Resources</u>	<u>UL scrambling code</u>	-	-	<u>Set UL Scrambling Code per UE</u>
	<u>UL spreading code type</u>	-	-	
	<u>No. of UL spreading code</u>	-	-	
	<u>UL spreading code id(s)</u>	-	-	
<u>DL Radio Resources</u>	<u>DL spreading code type</u>	-	-	<u>Same code type for all Radio Links</u>
	<u>No. of DL spreading code</u>	-	-	<u>Same number of codes for all Radio Links</u>
	<u>No. of Radio Links</u>	<u>m</u>	-	
	<u>Radio Link ID</u>	<u>m</u>	-	
	<u>Cell ID</u>	-	-	
	<u>Soft Combination Indicator</u>	-	-	<u>Indicates May, Must, Must not</u>
	<u>Phase Difference</u>	-	-	
	<u>___:</u>			
	<u>Radio Link ID</u>	<u>o</u>	-	
	<u>Cell ID</u>	-	-	
	<u>Soft Combination Indicator</u>	-	-	
	<u>Phase Difference</u>	-	-	

<u>DL Radio Resources</u>	<u>No. of Radio Links</u>	-	-	
	<u>Radio Link ID</u>	-	-	
	<u>Neighbor Cell Information</u>	-	-	<u>FFS*2</u>
	<u>No. of DL spreading code</u>	-	-	
	<u>DL spreading code id #1</u>	-	-	
	___:			
	<u>DL spreading code id #m</u>	-	-	
	___:			
	<u>Radio Link ID</u>	-	-	
	<u>Neighbor Cell Information</u>	-	-	<u>FFS</u>
	<u>No. of DL spreading code</u>	-	-	
	<u>DL spreading code id #1</u>	-	-	
	___:			
	<u>DL spreading code id #m</u>	-	-	
<u>Execution Time</u>	<u>Execution Time</u>	-	-	
<u>Offset Values</u>	<u>Slot offset</u>	-	-	
	<u>Frame offset</u>	-	-	
<u>Power Control Info</u>	<u>Initial DL Power</u>	-	-	<u>For Initial DL Power Setting</u>
	<u>DL Power Range</u>	-	-	<u>For Correcting DL Power Drifting during DHO</u>
<u>Outerloop Power Control Info</u>	<u>Target UL Eb/lo</u>	-	-	<u>For L1 Power Control</u>

*1,*2: Same as the previous.

[UMTS <spec>]

TS RAN S3.23 V0.0.21 (1999-02) TS RAN S3.23 V0.0.21 (1999-02) TS RAN S3.23 V0.0.2 (1999-02)

Power Control

<u>Parameter Category</u>	<u>Iur Parameters</u>	<u>Iur Message</u>	<u>Note</u>
		<u>POWR</u> <u>CONTRO</u> <u>L</u>	
<u>Power Control Info</u>	<u>Initial DL Power</u>	-	<u>For Initial DL Power Setting</u>
	<u>DL Power Range</u>	o	<u>For Correcting DL Power Drifting during DHO</u>

Outer-loop Power Control

<u>Parameter Category</u>	<u>Iur Parameters</u>	<u>Iur Message</u>	<u>Note</u>
		<u>OUTER-</u> <u>LOOP</u> <u>POWR</u> <u>CONTRO</u> <u>L</u>	
<u>Outerloop Power Control Info</u>	<u>Target UL Eb/lo</u>	<u>o</u>	<u>For L1 Power Control</u>

14 History

<u>Document history</u>		
<u>0.0.1</u>	<u>February 1999</u>	<u>Document Structure Proposal</u>
<u>0.0.2</u>	<u>February 1999</u>	<u>Introduction of content from the Merged Description of I_{ur} Interface, V0.0.2 1999-02</u>
<p>Rapporteur for 3GPP RAN S3.23 is:</p> <p><u>Björn Ehrstedt</u> <u>Ericsson Radio Systems AB</u> Tel.: +46 8 404 8303 Fax : +46 8 404 3597 Email : bjorn.ehrstedt@era.ericsson.se</p>		
<p><u>This document is written in Microsoft Word version 6.0/96.</u></p>		