

Status report of RAN WG2 to RAN #9

Denis Fauconnier

RAN WG2 Chairman

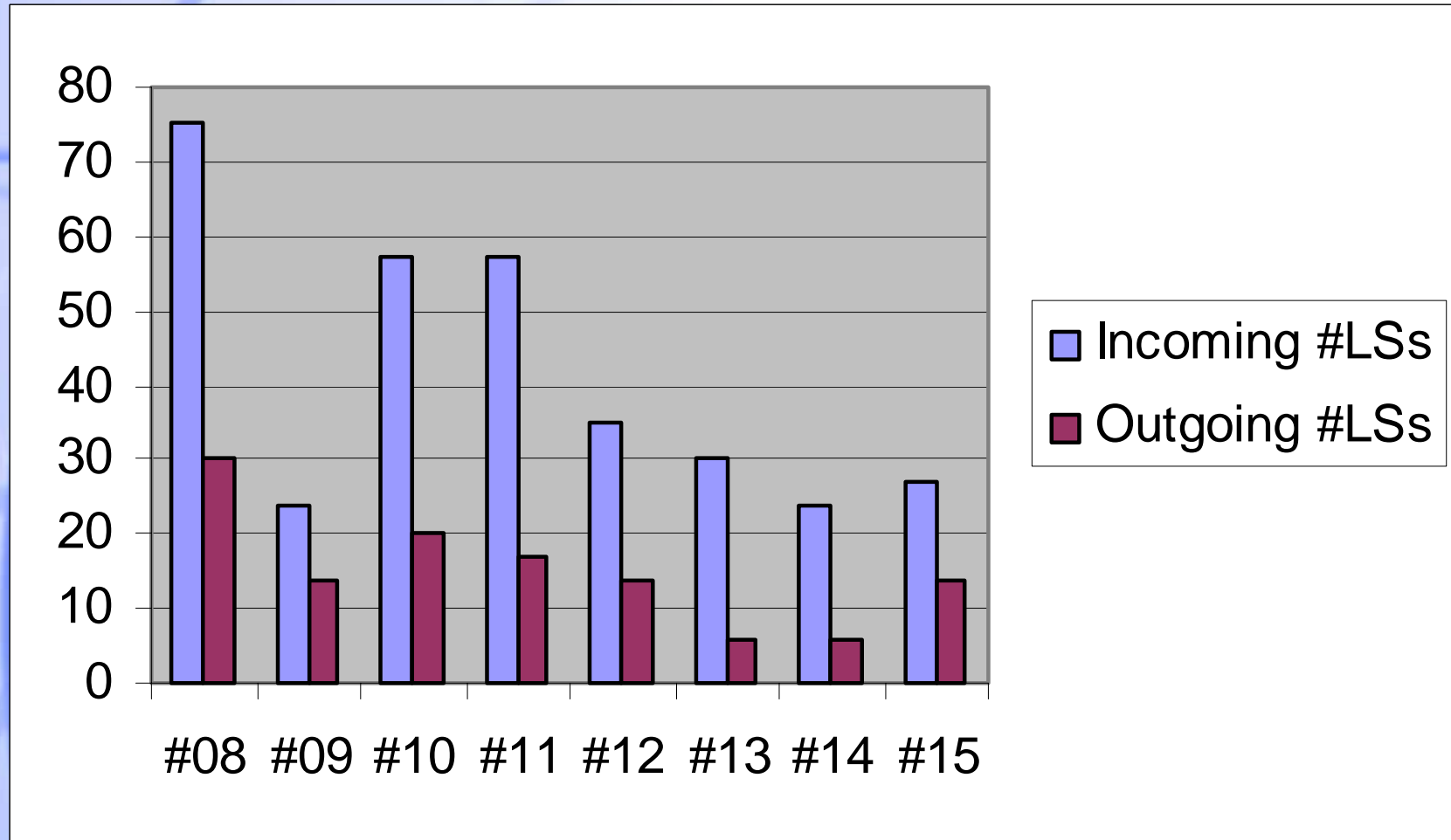
RAN WG2 statistics

Meetings held since RAN#8

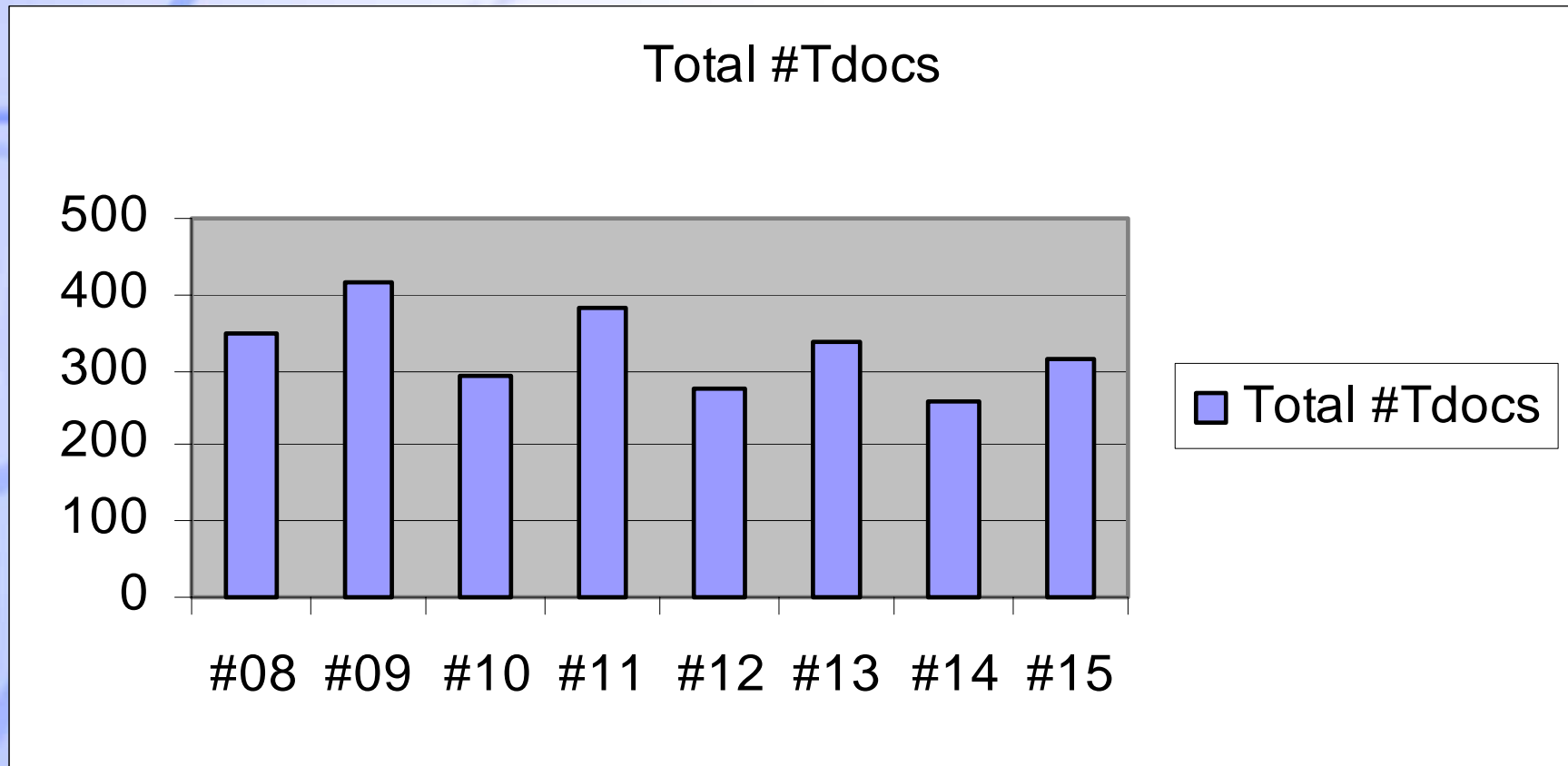
- RAN WG2#14 in July
- RAN WG2#15 in August
- RRC ad-hoc meeting in August



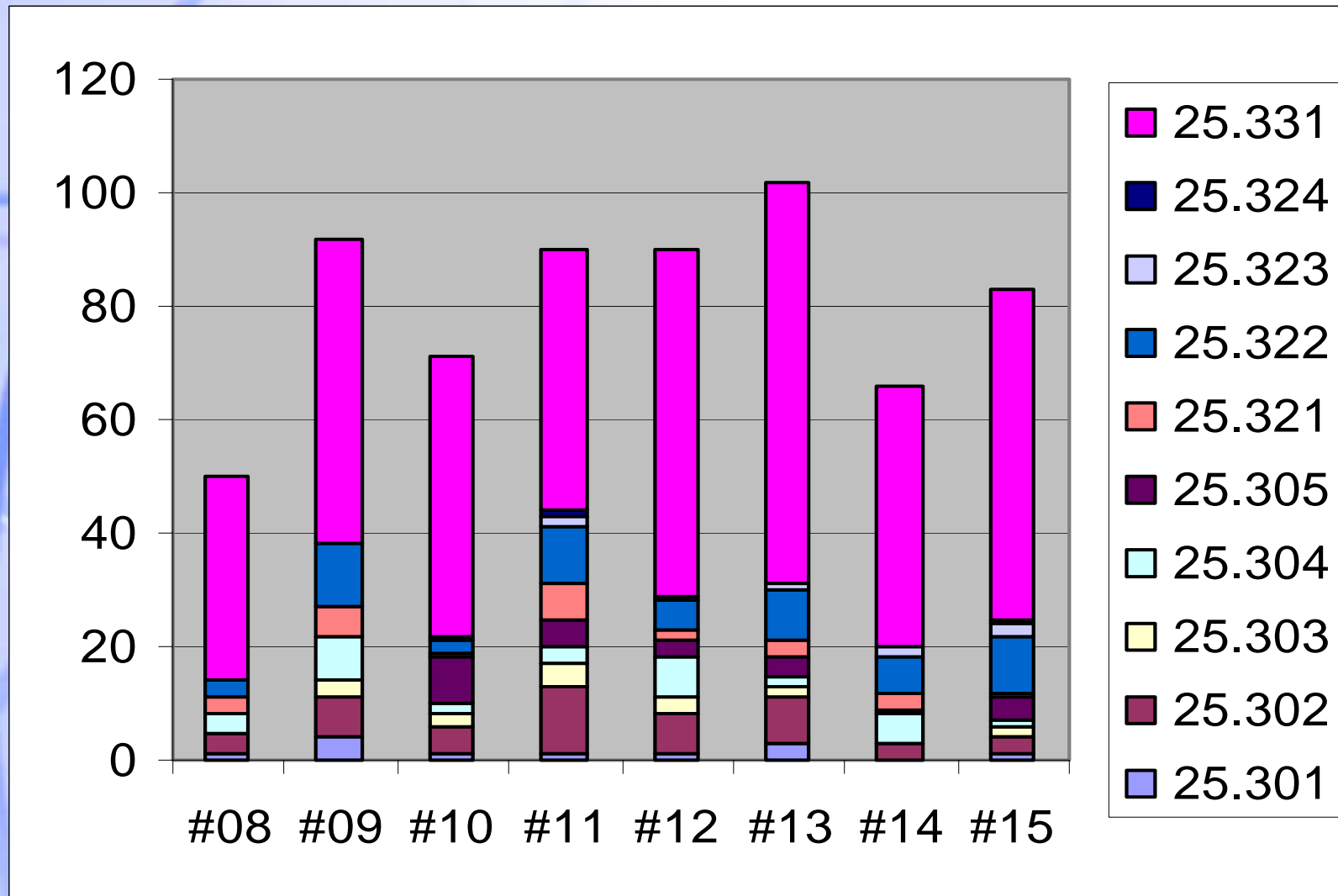
Liaison statements In/Out



Total number of documents per meeting



Change Request statistics





Release 99 activities

RP-000350

General

- **Again good progress, and many working hours!**
- **Highlights:**
 - Completion/correction on RRC: a lot of progress... As many CRs as last RAN, but much more clarifications than true corrections
 - Cell selection/re-selection: restructured document, now expected to be stable
 - Handover to/from GSM: complete
 - Security: some holes identified and partly filled in on principles. Stage 3 description missing from RRC!
 - RLC: many minor corrections
 - SRNS relocation: progressed but some problems may remain
 - Complex procedures which is across two WGs
- **Other specifications experiencing minor changes**

Joint meetings

- none



Change Requests on specifications

- Refer to RP-000351



Release 00 activities

RP-000350

List of Work Items under RAN WG2

- Hybrid ARQ II/III : good progress
- UE positioning in UTRA FDD : started
- UE positioning in UTRA TDD : started
- Radio access bearer support enhancement : started
- Improved usage of downlink resource in FDD for CCTrCHs of dedicated type : Not started
- Low chip rate TDD layer 2 and layer 3 protocol aspects: good progress
- Low Chip Rate TDD UE Radio Access Capability: good progress

•

Details in RP-000449

List of Feasibility Study under RAN WG2

- High Speed Downlink Packet Access: Not started
- Improved Common DL Channel for Cell-FACH State: No decision yet

Details in RP-000449

Conclusions

Chairman's concluding remarks

- Progress has again been important.
- Release starts to stabilise.
- Efforts are needed from all companies in order to bring release 99 specifications to the right quality standard

**Please sustain efforts and keep
experts active in RAN WG2**