

**3GPP TSG CN Plenary Meeting #22**  
**10<sup>th</sup> – 12<sup>th</sup> December 2003 Maui, USA.**

**NP-030515**

**Source:** TSG CN WG4  
**Title:** Corrections on EDCamel  
**Agenda item:** 9.20  
**Document for:** APPROVAL

---

<b>Spec</b>	<b>CR</b>	<b>Rev</b>	<b>Doc-2nd-Level</b>	<b>Phase</b>	<b>Subject</b>	<b>Cat</b>	<b>Ver_C</b>
23.018	126	1	N4-031133	Rel-6	Collective CR for Rel-6 Enhanced Dialed Services	B	5.9.0
29.002	687		N4-031135	Rel-6	Collective CR for Rel-6 Enhanced Dialed Services	B	6.3.0

3GPP TSG CN WG2 Meeting #31  
 Bangkok, Thailand, 27th – 31st October 2003

N2-030508  
 N4-031133

CR-Form-v7	
<b>CHANGE REQUEST</b>	
⌘ <b>23.018 CR 126</b> ⌘ rev <b>1</b> ⌘	Current version: <b>5.9.0</b> ⌘

For **HELP** on using this form, see bottom of this page or look at the pop-up text over the ⌘ symbols.

**Proposed change affects:** UICC apps  ME  Radio Access Network  Core Network

<b>Title:</b>	⌘ Collective CR for Rel-6 Enhanced Dialed Services		
<b>Source:</b>	⌘ CN4		
<b>Work item code:</b>	⌘ EDCAMEL	<b>Date:</b>	⌘ 23/06/2003
<b>Category:</b>	⌘ <b>B</b>	<b>Release:</b>	⌘ Rel-6
	Use <u>one</u> of the following categories: <b>F</b> (correction) <b>A</b> (corresponds to a correction in an earlier release) <b>B</b> (addition of feature), <b>C</b> (functional modification of feature) <b>D</b> (editorial modification) Detailed explanations of the above categories can be found in 3GPP <a href="#">TR 21.900</a> .		Use <u>one</u> of the following releases: 2 (GSM Phase 2) R96 (Release 1996) R97 (Release 1997) R98 (Release 1998) R99 (Release 1999) Rel-4 (Release 4) Rel-5 (Release 5) Rel-6 (Release 6)

<b>Reason for change:</b>	⌘ The enhanced dialed services was introduced as one of the CAMEL4 features in Rel-6 and SA meeting #18 has approved the corresponding stage 1 22.078 CR.  A current CR to 23.078 is proposing the related stage 2 work for the enhanced dialed services. Because CS_gsmSSF can use Int_Disconnect_Leg(Leg2) if Enhanced Dialed Services is allowed, the procedures related to enhanced dialed services should handle this signal as procedure CAMEL_OCH_MSC_INIT does.  According to the result of this processing, this CR to 23.018 is proposing this related enhancements for enhanced dialed services.
<b>Summary of change:</b>	⌘ As a result of handling Int_Disconnect_Leg(Leg2) signal in procedures CAMEL_MO_Dialed_Services and CAMEL_CF_Dailed_Services in 23.078 specification, the results of those procedures should be handled. That is, the process of result 'Leg1_only' should be added in procedure OG_Call_Setup_MSC and MT_CF_MSC.
<b>Consequences if not approved:</b>	⌘ This 23.018 spec will not be coincident with CAMEL specifications 22.078 and 23.078 for enhanced dialed services.

<b>Clauses affected:</b>	⌘ 7.1.1.3, 7.2.1.8										
<b>Other specs affected:</b>	<table border="1" style="display: inline-table; border-collapse: collapse;"> <tr> <td style="width: 20px; text-align: center;">Y</td> <td style="width: 20px; text-align: center;">N</td> </tr> <tr> <td style="text-align: center;">X</td> <td style="text-align: center;"></td> </tr> <tr> <td style="text-align: center;"></td> <td style="text-align: center;">X</td> </tr> <tr> <td style="text-align: center;"></td> <td style="text-align: center;">X</td> </tr> </table> Other core specifications Test specifications O&M Specifications	Y	N	X			X		X	⌘	23.078-CR553, 29.078-CR332, 29.002-CR687
Y	N										
X											
	X										
	X										

**Other comments:** ☈ This CR implements the following CRs:  
1. N2-030311 23.018-CR123

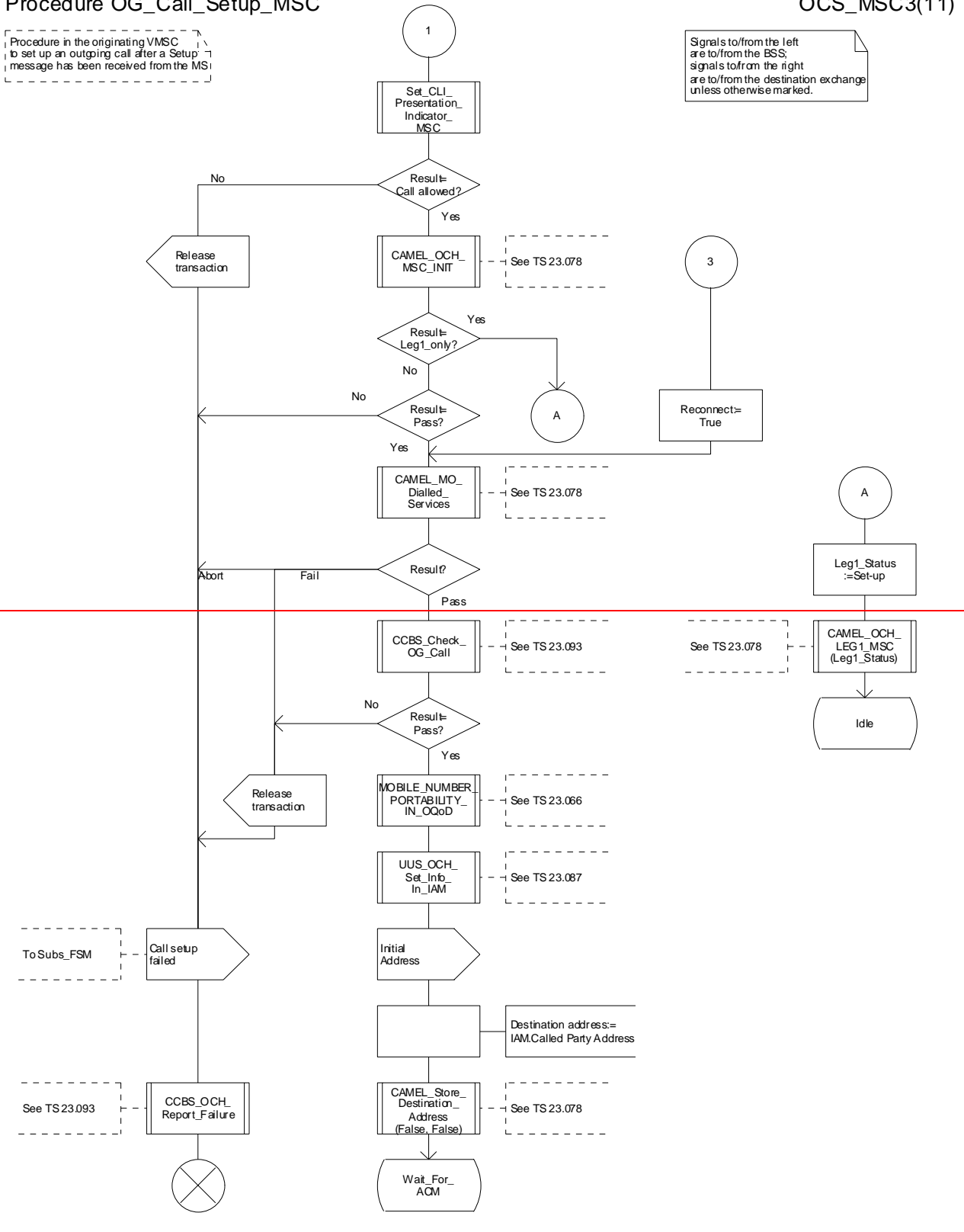
— First modified section —

Procedure OG\_Call\_Setup\_MSC

OCS\_MSC3(11)

Procedure in the originating VMSC to set up an outgoing call after a Setup message has been received from the MS

Signals to/from the left are to/from the BSS, signals to/from the right are to/from the destination exchange unless otherwise marked.

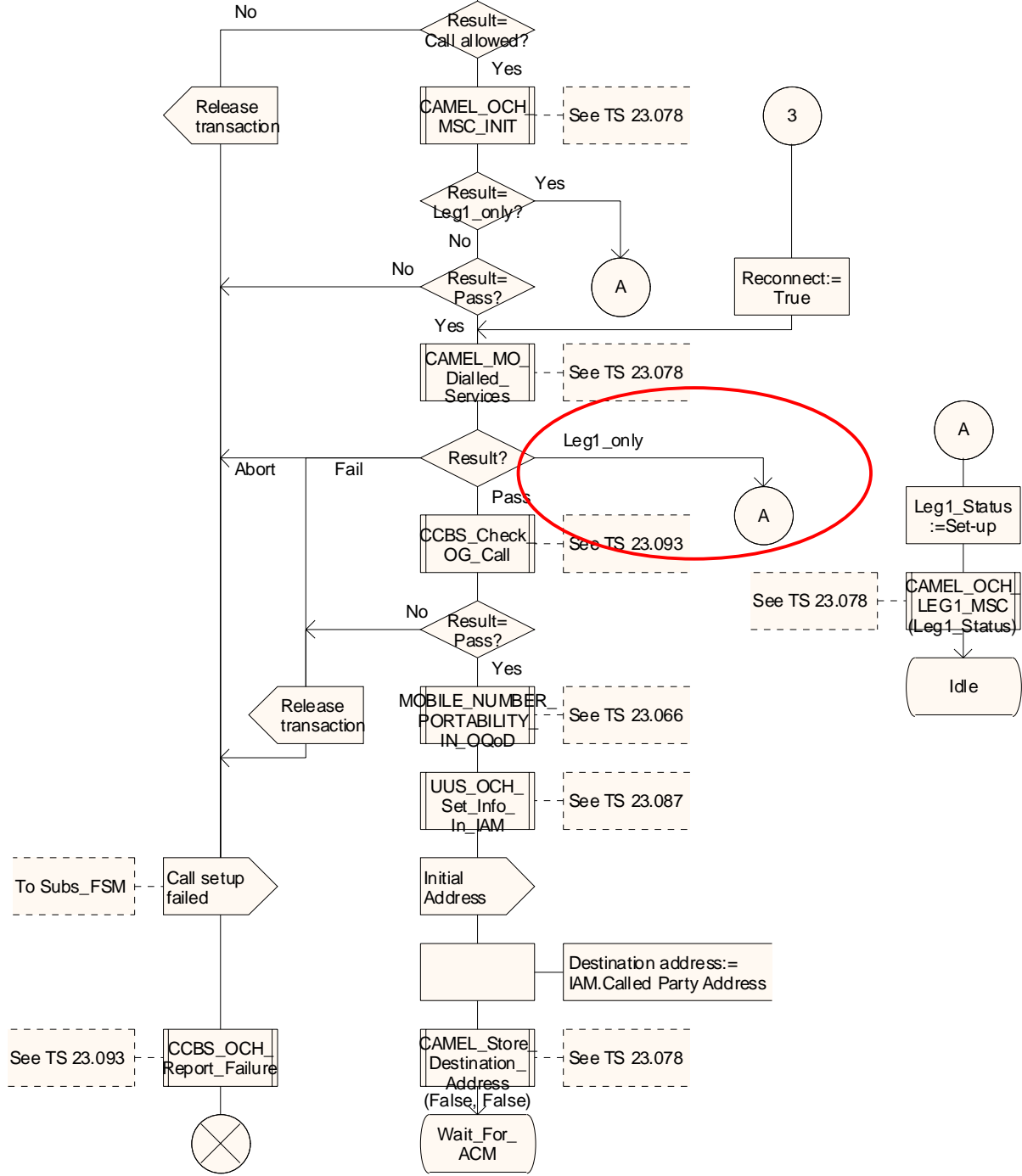


Procedure OG\_Call\_Setup\_MSC

OCS\_MSC3(11)

Procedure in the originating VMSC to set up an outgoing call after a Setup message has been received from the MS

Signals to/from the left are to/from the BSS; signals to/from the right are to/from the destination exchange unless otherwise marked.



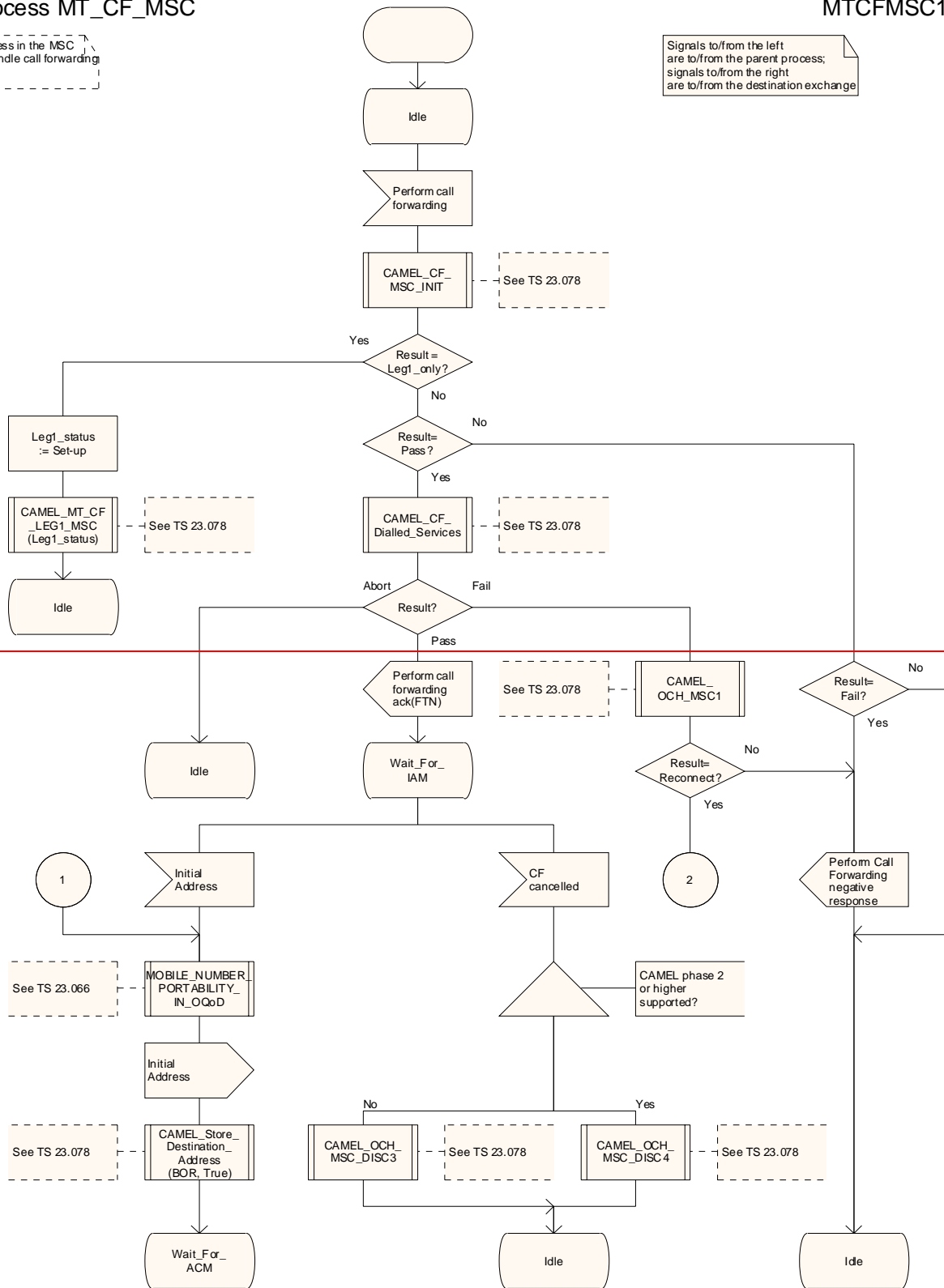
— Next modified section —

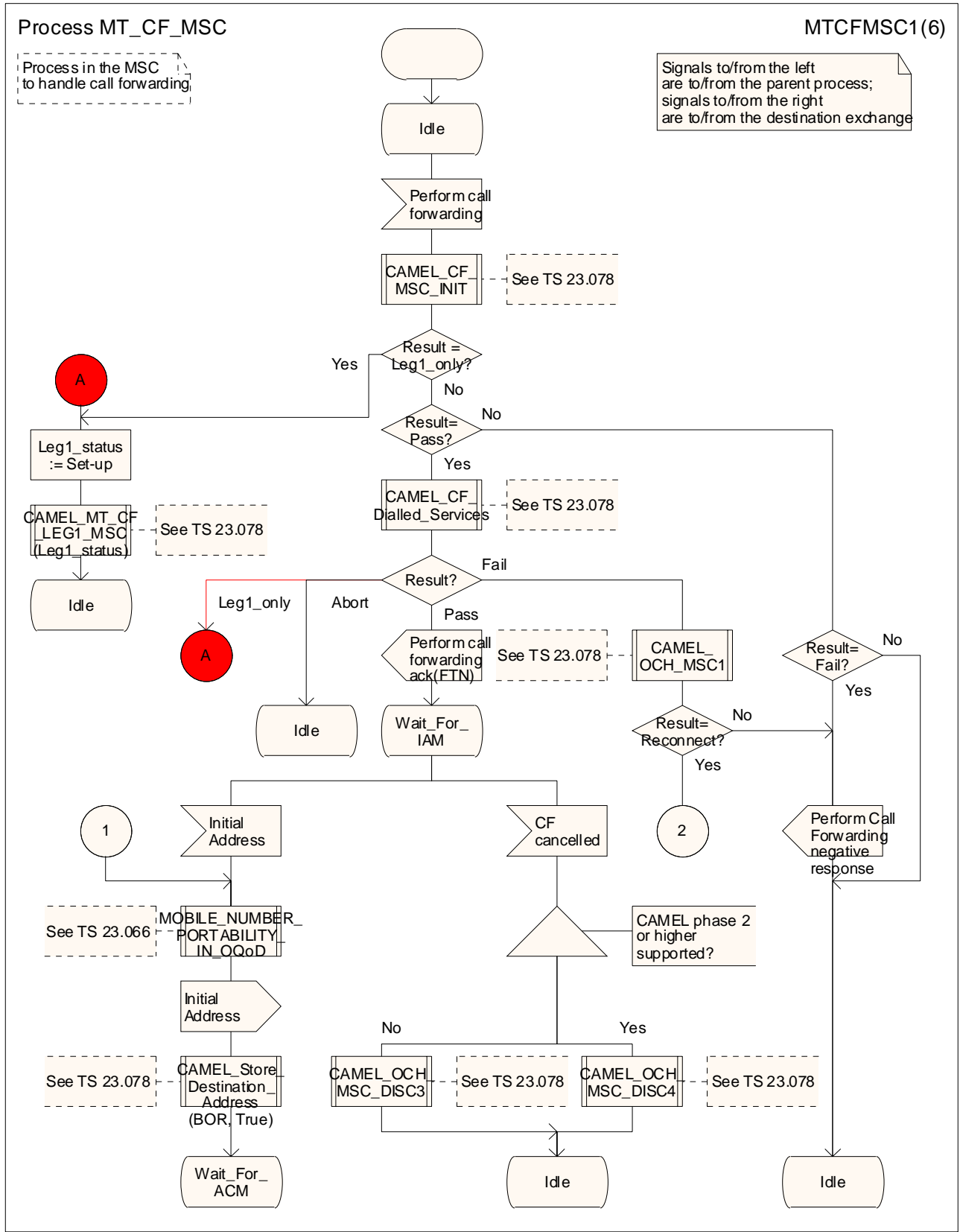
Process MT\_CF\_MSC

MTCFMSC1(6)

Process in the MSC to handle call forwarding

Signals to/from the left are to/from the parent process; signals to/from the right are to/from the destination exchange





— End of Modification —

CR-Form-v7

## CHANGE REQUEST

⌘ **29.002 CR 687** ⌘ rev **-** ⌘ Current version: **6.3.0** ⌘

For **HELP** on using this form, see bottom of this page or look at the pop-up text over the ⌘ symbols.

**Proposed change affects:** UICC apps  ME  Radio Access Network  Core Network

<b>Title:</b>	⌘ Collective CR for Rel-6 Enhanced Dialed Services		
<b>Source:</b>	⌘ CN4		
<b>Work item code:</b>	⌘ EDCAMEL	<b>Date:</b>	⌘ 12/09/2003
<b>Category:</b>	⌘ <b>B</b>	<b>Release:</b>	⌘ Rel-6
	Use <u>one</u> of the following categories: <b>F</b> (correction) <b>A</b> (corresponds to a correction in an earlier release) <b>B</b> (addition of feature), <b>C</b> (functional modification of feature) <b>D</b> (editorial modification) Detailed explanations of the above categories can be found in 3GPP <a href="#">TR 21.900</a> .		Use <u>one</u> of the following releases: 2 (GSM Phase 2) R96 (Release 1996) R97 (Release 1997) R98 (Release 1998) R99 (Release 1999) Rel-4 (Release 4) Rel-5 (Release 5) Rel-6 (Release 6)

<b>Reason for change:</b>	⌘ 3GPP SA meeting #18 has approved the Workitem on "Enhancement of dialed service for CAMEL" and the corresponding 22.078 CR.  A current 23.078 CR is proposing the stage 2 enhancements necessary. It is proposing to consider this enhancements in the stage 2 23.078 in respect to the Scope and to the Partial Implementation issue.  The current 29.002 CR is proposing an encoding for the new functionality.
<b>Summary of change:</b>	⌘ Introduction of an extra bits indicating the new OfferedCamel4Functionalities. The name of the bit is similar to the 23.078 information element names "Subscribed Enhanced Dialed Services" and "Serving Network Enhanced Dialed Services".
<b>Consequences if not approved:</b>	⌘ The CAMEL Phase 4 feature of Partial Implementation is not available for Enhanced Dialed Services.

<b>Clauses affected:</b>	⌘ 17.7.1										
<b>Other specs affected:</b>	<table border="1" style="display: inline-table; border-collapse: collapse; text-align: center;"> <tr> <td style="width: 20px;">Y</td> <td style="width: 20px;">N</td> </tr> <tr> <td>X</td> <td></td> </tr> <tr> <td></td> <td>X</td> </tr> <tr> <td></td> <td>X</td> </tr> </table> Other core specifications Test specifications O&M Specifications	Y	N	X			X		X	⌘ 23.078-CR553, 23.018-CR126, 29.078-CR332	
Y	N										
X											
	X										
	X										
<b>Other comments:</b>	⌘ The 29.002 proposed encoding assumes that "CAMEL Phase 4" is still used for CAMEL Release 6. This CR implements the following approved documents: 1. N2-030344/ N4-030750 29.002-CR525										



—Modified section—

## 17.7.1 Mobile Service data types

```
MAP-MS-DataTypes {
  itu-t identified-organization (4) etsi (0) mobileDomain (0)
  gsm-Network (1) modules (3) map-MS-DataTypes (11) version9 (9)}
```

DEFINITIONS

IMPLICIT TAGS

::=

BEGIN

...

```
OfferedCamel4Functionalities ::= BIT STRING {
  initiateCallAttempt          (0),
  splitLeg                     (1),
  moveLeg                      (2),
  disconnectLeg                (3),
  entityReleased               (4),
  dfc-WithArgument             (5),
  playTone                    (6),
  dtmf-MidCall                 (7),
  chargingIndicator            (8),
  alertingDP                   (9),
  locationAtAlerting           (10),
  changeOfPositionDP           (11),
  or-Interactions              (12),
  warningToneEnhancements      (13),
  cf-Enhancements              (14),
  subscribedEnhancedDialledServices (15),
  servngNetworkEnhancedDialledServices (16)
} (SIZE (15..32))
-- A node supporting Camel phase 4 shall mark in the BIT STRING all Camel4
-- functionalities it offers.
-- Other values than listed above shall be discarded.
```

...

— END —