

3GPP TSG CN Plenary Meeting #12
Stockholm, Sweden, 13th - 15th June 2001

Tdoc NP-010371

Source: CN5
Title: Rel4 CR to OSA API Mapping (TR 29.998-4-1)
Agenda item: 8.5 OSA enhancements [OSA1]
Document for: APPROVAL

Doc-1st-Level	Doc-2nd-Level	Spec	CR	Rev	Phase	Subject	Cat	Version-Current	Version-New	Workitem
NP-010371	N5-010432	29.998-4-1	001		Rel4	setCallLoadControl mapping to CAP	F	4.0.0	4.1.0	OSA1

CR-Form-v4

CHANGE REQUEST

⌘ **29.998-4-1 CR 001** ⌘ ev **-** ⌘ Current version: **4.0.0** ⌘

For **HELP** on using this form, see bottom of this page or look at the pop-up text over the ⌘ symbols.

Proposed change affects: ⌘ (U)SIM ME/UE Radio Access Network Core Network

Title:	⌘ setCallLoadControl mapping to CAP				
Source:	⌘ CN5				
Work item code:	⌘ OSA1	Date:	⌘ 25/05/2001		
Category:	⌘ F	Release:	⌘ Rel4		
	Use <u>one</u> of the following categories:		Use <u>one</u> of the following releases:		
	F (correction) A (corresponds to a correction in an earlier release) B (addition of feature), C (functional modification of feature) D (editorial modification)		2 (GSM Phase 2) R96 (Release 1996) R97 (Release 1997) R98 (Release 1998) R99 (Release 1999) REL-4 (Release 4) REL-5 (Release 5)		
	Detailed explanations of the above categories can be found in 3GPP TR 21.900.				

Reason for change:	⌘ Missing description of " setCallLoadControl mapping to CAP"
Summary of change:	⌘ Call load control is included in the OSA API (3GPP TS 29.198-4) for Rel4. This CR contains the description how setCallLoadControl may be mapped to CallGap of CAP protocol.
Consequences if not approved:	⌘ Incomplete TR

Clauses affected:	⌘ 4.1
Other specs affected:	⌘ <input type="checkbox"/> Other core specifications ⌘ <input type="checkbox"/> Test specifications <input type="checkbox"/> O&M Specifications
Other comments:	⌘

4.1.4 getCriteria

getCriteria is used by the application to query the event criteria set with *enableCallNotification*.

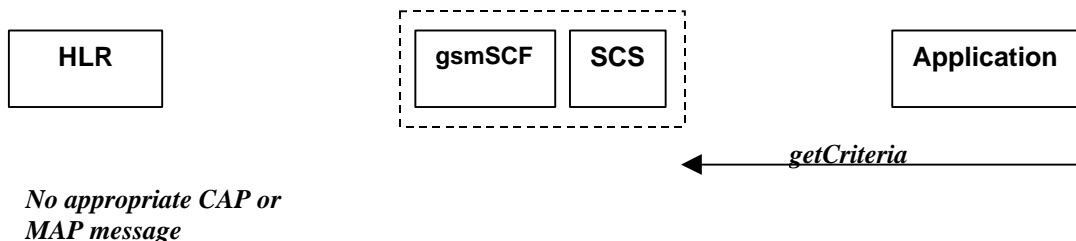


Figure 4-4: Call Flow for getCriteria

Table 4-8: Normal Operation

Pre-conditions	Notifications have been enabled by the application.
1	The application invokes the <i>getCriteria</i> method
2	The SCS returns the criteria

Parameter Mapping

None.

4.1.5 setCallLoadControl

setCallLoadControl is a method used to control the number of invoked methods i.e. to restrict the load placed on the application server.

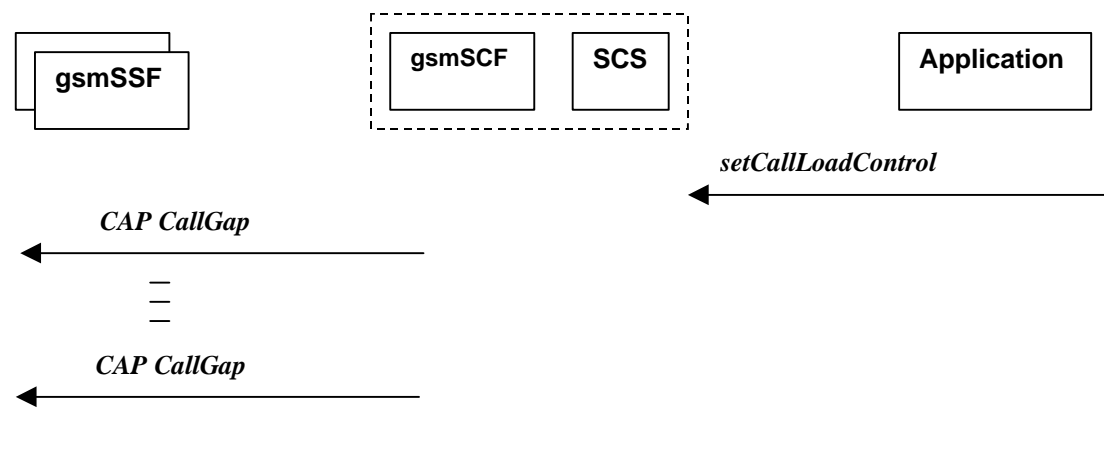


Figure 4-5: Call Flow for release

Table 4-9: Normal Operation

Pre-conditions	Call Control Manager is in active state
1	The application invokes the <i>setCallLoadControl</i> method
2	The SCS sends an equivalent message to the gsmSCF
3	The gsmSCF may invoke the CAP <i>CallGap</i> operations towards different gsmSSFs. CallGap can be sent in CAP only after the dialogue has been opened first by sending InitialDP.

Table 4-30: Parameter Mapping

From: setCallLoadControl	To: CAP CallGap
<u>duration</u>	<u>gapIndicators</u> <u>duration</u>
<u>mechanism</u> <u>callLoadControlPerInterval</u>	<u>gapIndicators</u> <u>gapInterval</u>
<u>treatment</u> <u>ReleaseCause</u> <u>AdditionalTreatmentInfo</u> <u>InformationToSend</u>	<u>gapTreatment</u> <u>ReleaseCause</u> <u>InformationToSend</u>
<u>addressRange</u>	<u>gapCriteria</u> <u>basicGapCriteria</u> <u>calledAddressValue</u>
<u>assignmentID</u>	