

3GPP TSG_CN#7
ETSI SMG3 Plenary Meeting #7,
Madrid, Spain
13th – 15th March 2000

NP-000026

Agenda item: 5.4.3
Source: TSG_N SS ad hoc
Title: CRs to 3G Work Item Follow me

Introduction:

This document contains “1” CRs on **Follow me**, that have been agreed by **TSG_N SS ad hoc**, and are forwarded to **TSG_N Plenary meeting #7** for approval.

Tdoc	Spec	CR	Rev	Cat	Rel	Old ver	New ver	Subject
NS-000025	23.094	001		F	R99	3.0.0	3.1.0	Follow Me stage 2 specification

<h2 style="margin: 0;">CHANGE REQUEST</h2>		Please see embedded help file at the bottom of this page for instructions on how to fill in this form correctly.
23.094	CR 001	Current Version: 3.0.0
GSM (AA.BB) or 3G (AA.BBB) specification number ↑	↑ CR number as allocated by MCC support team	
For submission to: CN#7 <small>list expected approval meeting # here ↑</small>	for approval <input checked="" type="checkbox"/> for information <input type="checkbox"/>	strategic <input type="checkbox"/> non-strategic <input type="checkbox"/> <small>(for SMG use only)</small>

Form: CR cover sheet, version 2 for 3GPP and SMG The latest version of this form is available from: <ftp://ftp.3gpp.org/Information/CR-Form-v2.doc>

Proposed change affects: (U)SIM ME UTRAN / Radio Core Network
(at least one should be marked with an X)

Source: SS ad hoc **Date:** 14.02.00

Subject: Some corrections and further clear formulations to FM stage 2 specification

Work item: Follow me

Category:	F Correction <input checked="" type="checkbox"/> A Corresponds to a correction in an earlier release <input type="checkbox"/> B Addition of feature <input type="checkbox"/> C Functional modification of feature <input type="checkbox"/> D Editorial modification <input type="checkbox"/>	Release:	Phase 2 <input type="checkbox"/> Release 96 <input type="checkbox"/> Release 97 <input type="checkbox"/> Release 98 <input type="checkbox"/> Release 99 <input checked="" type="checkbox"/> Release 00 <input type="checkbox"/>
------------------	--	-----------------	--

(only one category shall be marked with an X)

Reason for change: Some corrections and further clear formulations

Clauses affected: _____

Other specs affected:	Other 3G core specifications <input type="checkbox"/> Other GSM core specifications <input type="checkbox"/> MS test specifications <input type="checkbox"/> BSS test specifications <input type="checkbox"/> O&M specifications <input type="checkbox"/>	→ List of CRs: _____ → List of CRs: _____ → List of CRs: _____ → List of CRs: _____ → List of CRs: _____
------------------------------	---	--

Other comments: _____



<----- double-click here for help and instructions on how to create a CR.

4.2 Information Flows

4.2.1 Information Flow for the handling of FM by the initiating subscriber

Figure 4.1 shows the Information Flow for the control of FM (registration, erasure, forced erasure and interrogation) by the initiating subscriber.

For any control operation on FM, the initiating subscriber (MSa) enters a Follow Me Request (FM-Request). This is a USSD string containing the requested FM operation and the remote number. The Follow Me Request is routed via the MSC/VLR to the HLR of the initiating subscriber (HLRa).

The HLRa performs a series of checks as described in the SDLs (**Error! Reference source not found.**). If these checks fail, the MSa receives a response (FM-Response) indicating the error.

If the checks pass, the HLRa forwards the operation request (HLR-FM-Request) to the FFN of the remote party (FFNb).

FFNb carries out the appropriate control operation and checks as described in the SDLs (**Error! Reference source not found.**) for the remote party.

The result of this operation (success or error) is reported back in a USSD Response to the initiating subscriber.

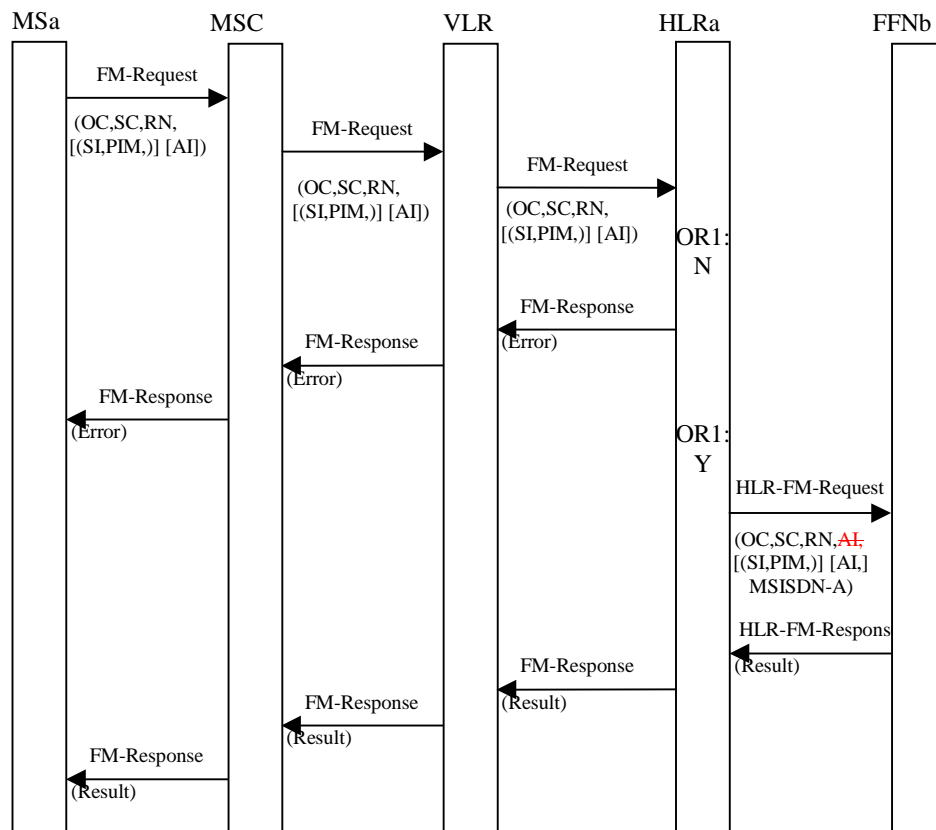


Figure 4.1: Information flow for the control of FM by the initiating subscriber

- NOTE 1: OR1:N The case where the checks in the HLR result in a negative outcome, e.g. FM is not provisioned for the initiating subscriber or the initiating subscriber is not allowed to operate FM for the remote party.
- OR1:Y The case where all the checks in the HLR are successful, e.g. FM is provisioned for the initiating subscriber and the initiating subscriber is allowed to operate FM for the remote party.
- NOTE 2: [...] Optional parameter
 [...] Conditional parameter
 OC Operation Code (Register, Erase or Interrogate)
 SC Service Code for FM
 RN Remote Number

SI	Supervisor Indicator. This parameter is conditional and only used for forced erasure by a FM service supervisor.
PIM	MSISDN of previous initiating subscriber who has registered the FM to remote number. This parameter is conditional and only used for forced erasure by a FM service supervisor.
AI	Supplementary Information containing additional information.
MSISDN-A	initiating number in international format. <u>It is not a part of the USSD string, but is sent from HLRa to the FFNb together with the HLR-FM-Request within the MAP operation.</u>

4.2.2 Information Flow for the handling of FM by the remote party

Control of FM by the remote party is possible if the remote party is a GSM subscriber.

The information flow for control of FM by the remote party (erasure and interrogation of her own FM data) is the same as the information flow for control of FM by the initiating subscriber.

If a remote party tries to register FM to herself the registration is rejected and an error is reported.

.....

Annex B (normative): FM control Messages and their contents

B.1 General principles

All messages used for the control of FM are based on mobile initiated USSD. The principles of USSD can be found in GSM 02.90, GSM 03.90, GSM 04.90 and GSM 09.02.

This document is only concerned with the contents of the USSD strings.

B.2 Information Elements used in the messages

The operation code

The operation code is defined in GSM 02.30 for the control of Supplementary Services and consists of the two characters:

** for Registration

.... for Erasure

*# for Interrogation

The Service Codes

The Service Code is service specific for FM.

The remote number

The remote number is the basic MSISDN of the remote party if the remote party is a GSM subscriber. It is entered by the initiating subscriber as part of the registration request. It is a number in international format.

Additional information field

An additional information field which does not exceed 30 characters-octets may be optionally included in all FM control messages to convey operator specific information to the FFNb. The content and use of this additional information is operator specific and out of scope of this specification.

The initiating number

The initiating number is the basic MSISDN of the initiating subscriber. It is derived by HLRA from the IMSI of the initiating subscriber.

This parameter is used in international format according to the scheme:

country code, national (significant) number.