

3GPP TSG CN Plenary Meeting #26
8th – 10th December 2004 Athens, Greece.

NP-040544

Source: TSG CN WG4
Title: Corrections on Camel TEI6
Agenda item: 9.21
Document for: APPROVAL

Spec	CR	Rev	Doc-2nd-Level N4-040	Phase	Subject	Cat	Ver_C
23.078	752		1420	Rel-6	Correction to Change of Position handling in gsmSSF	F	6.3.0
29.078	390		1422	Rel-6	Correction of wrong TS numbers in references	F	6.3.0
23.078	749	2	1631	Rel-6	Correcting SDL of Process CS_gsmSSF (sheet 62)	F	6.3.0
23.078	757	1	1632	Rel-6	Warning Tone	F	6.3.0
23.078	753	1	1633	Rel-6	Correction in Sheet 18 of Process CSA_gsmSSF	F	6.3.0

CHANGE REQUEST

⌘ **23.078 CR 752** ⌘ rev ⌘ Current version: **6.3.0** ⌘

Proposed change affects: UICC apps ME Radio Access Network Core Network

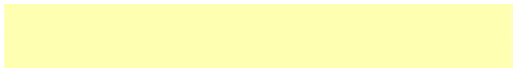
Title:	⌘ Correction to Change of Position handling in gsmSSF		
Source:	⌘ CN4		
Work item code:	⌘ TEI6	Date:	⌘ 7 October 2004
Category:	⌘ F	Release:	⌘ Rel-6
	<i>Use one of the following categories:</i> F (correction) A (corresponds to a correction in an earlier release) B (addition of feature), C (functional modification of feature) D (editorial modification)		<i>Use one of the following releases:</i> 2 (GSM Phase 2) R96 (Release 1996) R97 (Release 1997) R98 (Release 1998) R99 (Release 1999) Rel-4 (Release 4) Rel-5 (Release 5) Rel-6 (Release 6)

Reason for change:	⌘ Process CS_gsmSSF specifies, amongst others, the gsmSSF behaviour for the Change of Position event. When a change of position event occurs, a notification is sent to the gsmSCF, depending on the arming state of the associated Detection Point. In addition, the procedure Handle_ACR (legId) is called. When CS_gsmSSF calls Handle_ACR, it should indicate, by means of an explanatory text box in SDL, what the value of LegActive parameter in Apply Charging Report operation shall be. This indication is currently missing in the SDL for above-referred event. As a result, it is undefined, from SDL point of view, what the value of said parameter shall be, in the case of the occurrence of a Change of Position event. The present CR proposes therefore, that the SDL for CS_gsmSSF be corrected.
Summary of change:	⌘ In sheets 44 and 45 of process CS_gsmSSF, a text box shall be connected to Handle_ACR. The text box shall indicate "LegActive = TRUE". The value TRUE applies here, since the Change of Position event can occur only when the call (leg) is Active.
Consequences if not approved:	⌘ A gsmSSF may report CallActive = FALSE. That may lead to, amongst others, incorrect call charging.

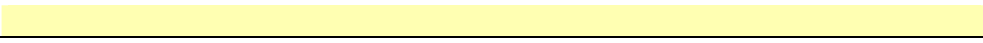
Clauses affected:	⌘ Figure 4.99, sheets 44 and 45							
Other specs	⌘	<table border="1" style="display: inline-table; border-collapse: collapse;"> <tr> <td style="text-align: center;">Y</td> <td style="text-align: center;">N</td> </tr> <tr> <td style="text-align: center;"> </td> <td style="text-align: center;">X</td> </tr> </table>	Y	N		X	Other core specifications	⌘
Y	N							
	X							

affected:

<input checked="" type="checkbox"/>	Test specifications
<input checked="" type="checkbox"/>	O&M Specifications



Other comments: ☞



***** First Modified Section *****

4.5.7.5 Process CS_gsmSSF and procedures

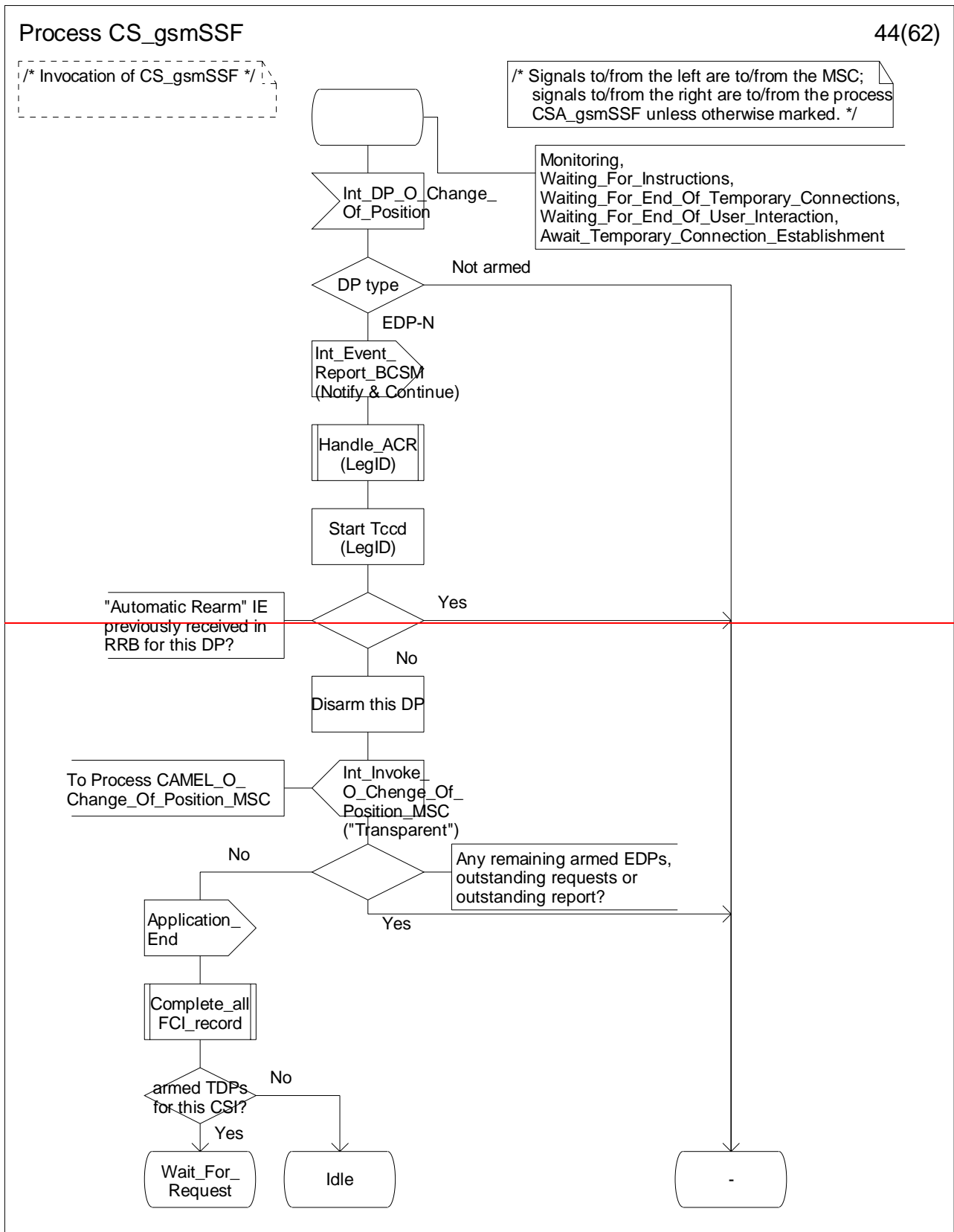


Figure 4.99-44: Process CS_gsmSSF (sheet 44)

Process CS_gsmSSF

44(62)

/* Invocation of CS_gsmSSF */

/* Signals to/from the left are to/from the MSC; signals to/from the right are to/from the process CSA_gsmSSF unless otherwise marked. */

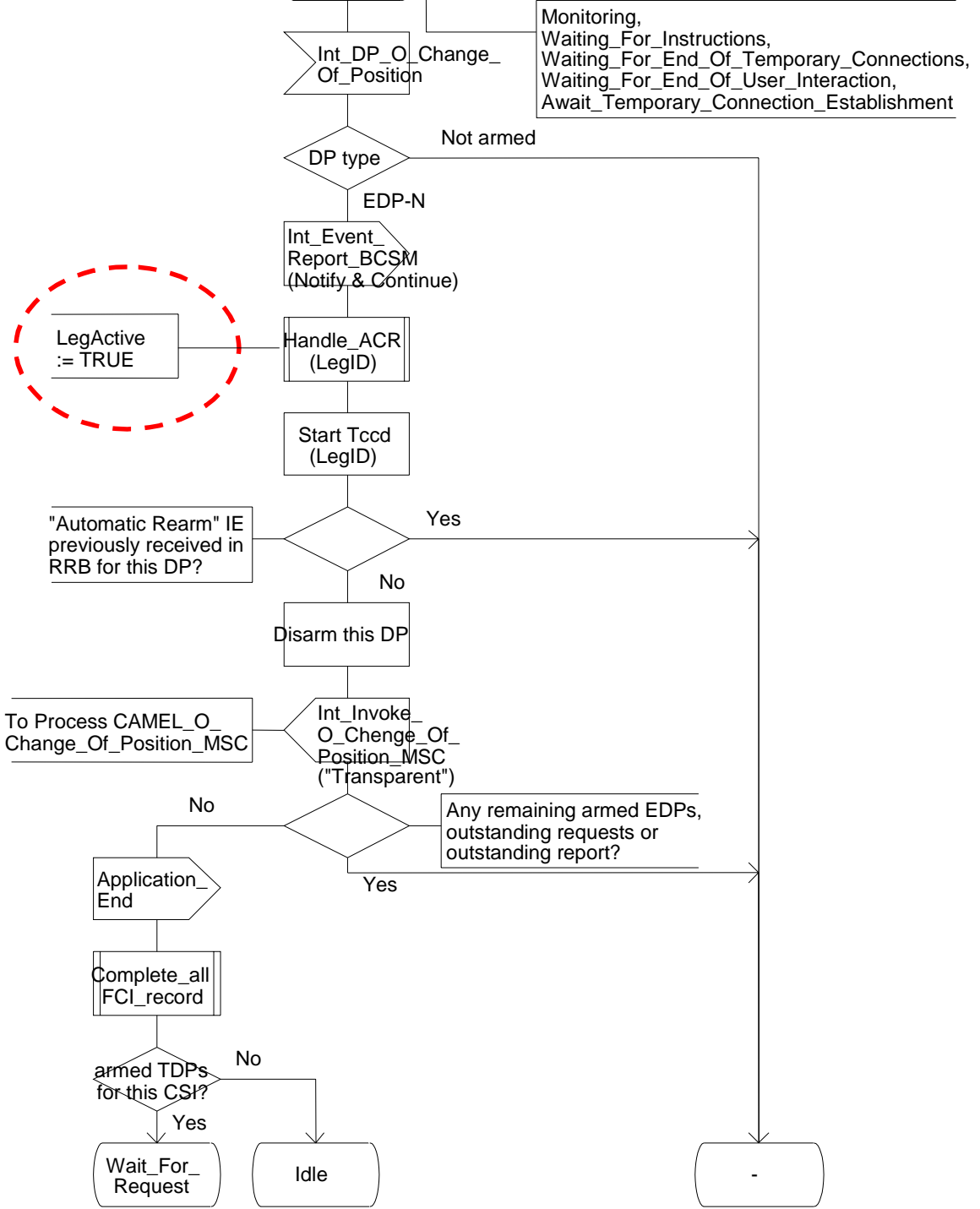


Figure Error! Reference source not found.-2: Process CS_gsmSSF (sheet 2)

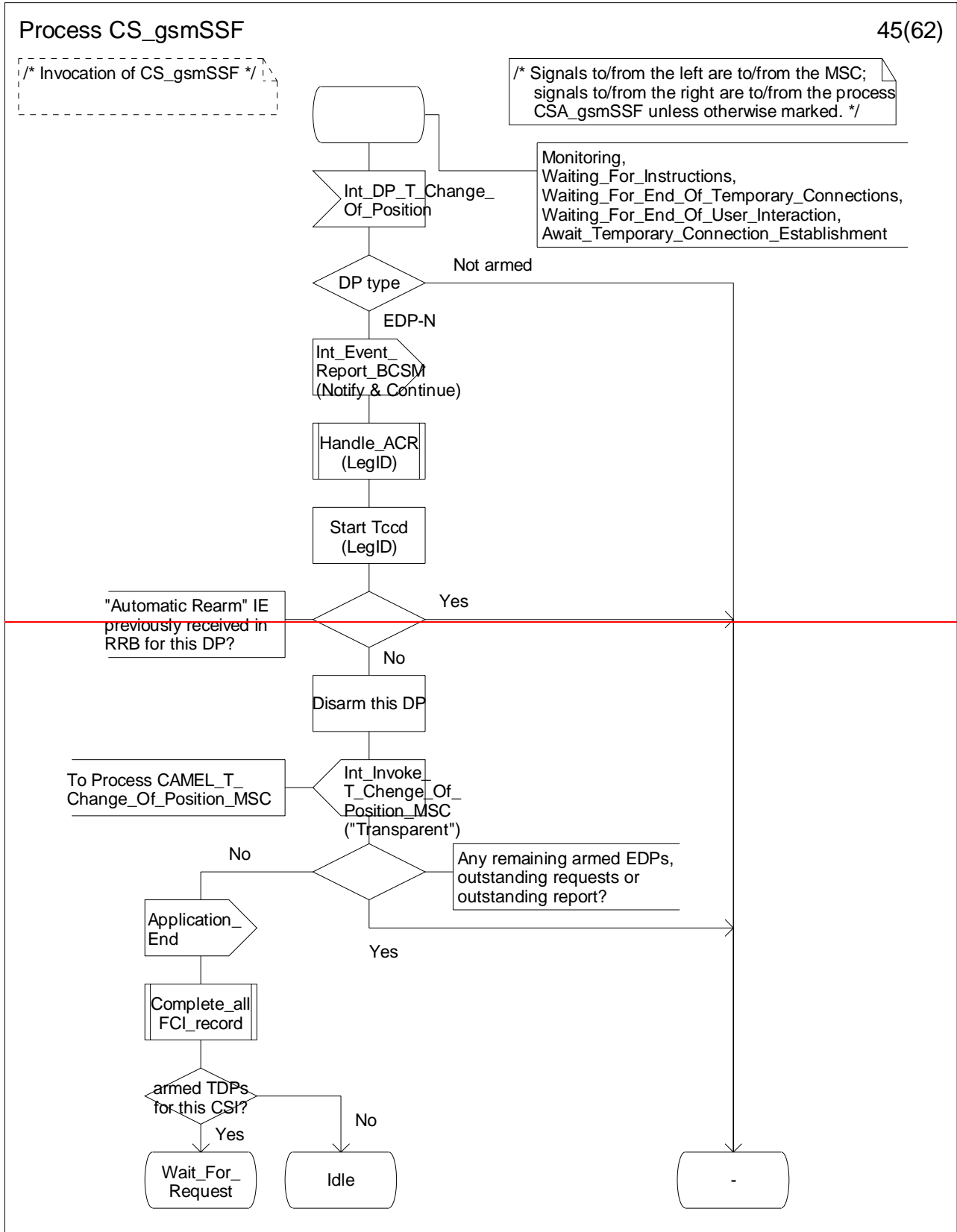


Figure 4.99-45: Process CS_gsmSSF (sheet 45)

Process CS_gsmSSF

45(62)

/* Invocation of CS_gsmSSF */

/* Signals to/from the left are to/from the MSC; signals to/from the right are to/from the process CSA_gsmSSF unless otherwise marked. */

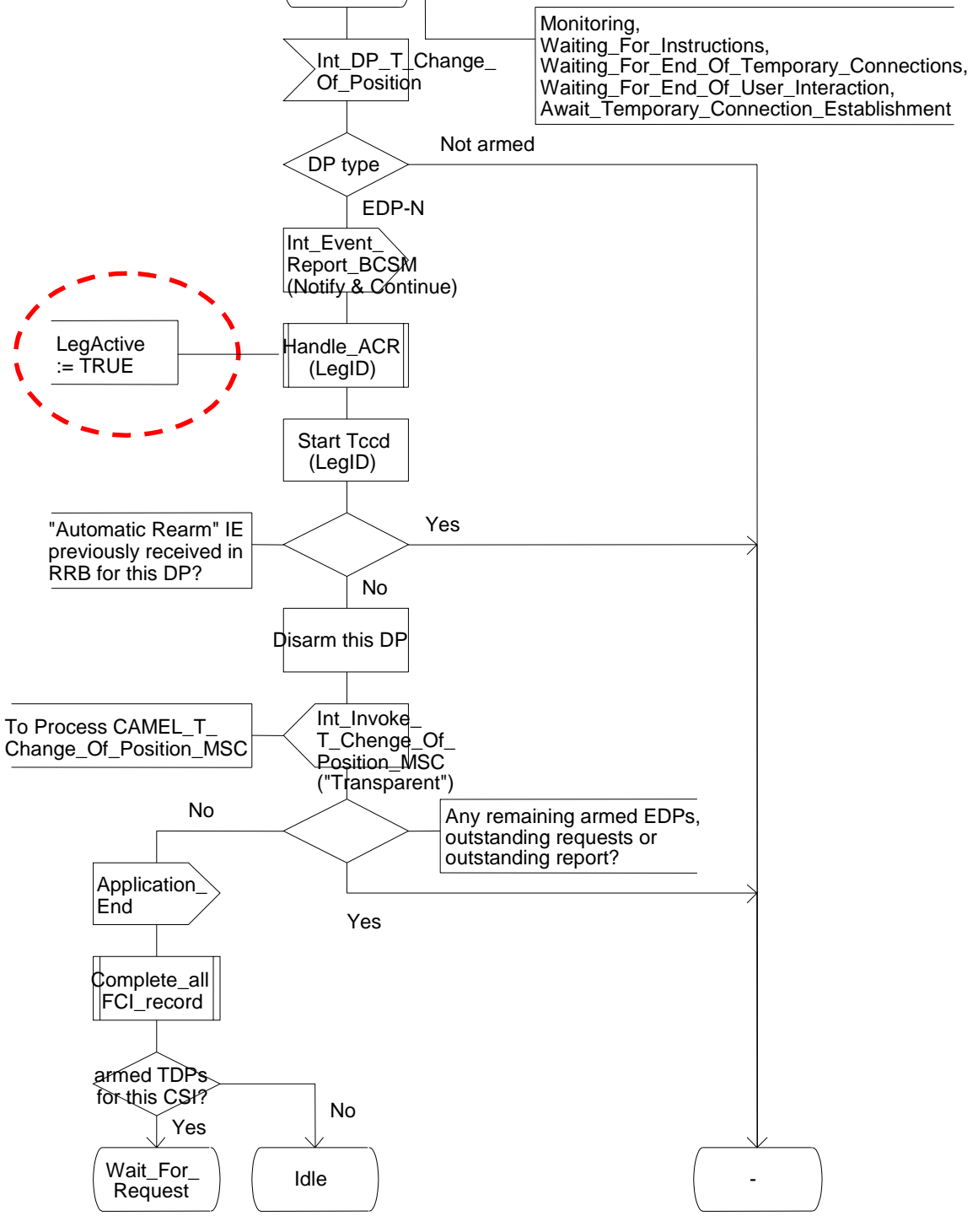


Figure Error! Reference source not found.-4: Process CS_gsmSSF (sheet 4)

*** End of Document ***

CHANGE REQUEST

⌘ **29.078 CR 390** ⌘ rev **-** ⌘ Current version: **6.3.0** ⌘

For **HELP** on using this form, see bottom of this page or look at the pop-up text over the ⌘ symbols.

Proposed change affects: UICC apps ME Radio Access Network Core Network

Title:	⌘ Correction of wrong TS numbers in references		
Source:	⌘ CN4		
Work item code:	⌘ TEI6	Date:	⌘ 01/11/2004
Category:	⌘ F	Release:	⌘ Rel-6
	<i>Use one of the following categories:</i> F (correction) A (corresponds to a correction in an earlier release) B (addition of feature), C (functional modification of feature) D (editorial modification) Detailed explanations of the above categories can be found in 3GPP TR 21.900 .		<i>Use one of the following releases:</i> Ph2 (GSM Phase 2) R96 (Release 1996) R97 (Release 1997) R98 (Release 1998) R99 (Release 1999) Rel-4 (Release 4) Rel-5 (Release 5) Rel-6 (Release 6) Rel-7 (Release 7)

Reason for change:	⌘ The reference TS numbers are wrong in the relevant chapter in the specification.		
Summary of change:	⌘ Correct the reference TS numbers		
Consequences if not approved:	⌘ Confusion in implementors.		

Clauses affected:	⌘ 2										
Other specs affected:	<table border="1" style="border-collapse: collapse;"> <tr> <td style="padding: 2px;">Y</td> <td style="padding: 2px;">N</td> </tr> <tr> <td style="padding: 2px;"><input type="checkbox"/></td> <td style="padding: 2px;"><input checked="" type="checkbox"/></td> </tr> <tr> <td style="padding: 2px;"><input type="checkbox"/></td> <td style="padding: 2px;"><input checked="" type="checkbox"/></td> </tr> <tr> <td style="padding: 2px;"><input type="checkbox"/></td> <td style="padding: 2px;"><input checked="" type="checkbox"/></td> </tr> </table>	Y	N	<input type="checkbox"/>	<input checked="" type="checkbox"/>	<input type="checkbox"/>	<input checked="" type="checkbox"/>	<input type="checkbox"/>	<input checked="" type="checkbox"/>	Other core specifications Test specifications O&M Specifications	⌘
Y	N										
<input type="checkbox"/>	<input checked="" type="checkbox"/>										
<input type="checkbox"/>	<input checked="" type="checkbox"/>										
<input type="checkbox"/>	<input checked="" type="checkbox"/>										
Other comments:	⌘										

How to create CRs using this form:

Comprehensive information and tips about how to create CRs can be found at <http://www.3gpp.org/specs/CR.htm>. Below is a brief summary:

- 1) Fill out the above form. The symbols above marked ⌘ contain pop-up help information about the field that they are closest to.
- 2) Obtain the latest version for the release of the specification to which the change is proposed. Use the MS Word "revision marks" feature (also known as "track changes") when making the changes. All 3GPP specifications can be downloaded from the 3GPP server under <ftp://ftp.3gpp.org/specs/> For the latest version, look for the directory name with the latest date e.g. 2001-03 contains the specifications resulting from the March 2001 TSG meetings.

- 3) With "track changes" disabled, paste the entire CR form (use CTRL-A to select it) into the specification just in front of the clause containing the first piece of changed text. Delete those parts of the specification which are not relevant to the change request.

First modification

2 References

The following documents contain provisions which, through reference in this text, constitute provisions of the present document.

- References are either specific (identified by date of publication, edition number, version number, etc.) or non-specific.
- For a specific reference, subsequent revisions do not apply.
- For a non-specific reference, the latest version applies. In the case of a reference to a 3GPP document (including a GSM document), a non-specific reference implicitly refers to the latest version of that document *in the same Release as the present document*.

- | | |
|-------------|---|
| [1] | EN 302 646-1 v7 (3GPP TS 09.12 Phase 2+): "Application of ISDN User Part (ISUP) version 2 for the ISDN-Public Land Mobile Network (PLMN) signalling interface; Part 1: Protocol specification". |
| [2] | 3GPP TS 22.024: "Description of Charge Advice Information (CAI)". |
| [3] | 3GPP TS 22.078: "Customised Applications for Mobile network Enhanced Logic (CAMEL); Service description, Stage 1". |
| [4] | 3GPP TS 22.115: "Service Aspects Charging and Billing". |
| [5] | 3GPP TS 23.003: "Numbering, addressing and identification". |
| [6] | 3GPP TS 23.040: "Technical realization of the Short Message Service (SMS); Point-to-Point (PP)". |
| [7] | 3GPP TS 23.078: " Customised Applications for Mobile network Enhanced Logic (CAMEL) Phase 3 - Stage 2". |
| [8] | 3GPP TS 23.079: "Support of Optimal Routeing (SOR); Technical realization". |
| [9] | 3GPP TS 24.008: "Digital cellular telecommunications system (Phase 2+); Mobile radio interface layer 3 specification (3GPP TS 24.008)". |
| [10] | 3GPP TS 24.011: "Point-to-Point (PP) Short Message Service (SMS); support on mobile radio interface". |
| [11] | 3GPP TS 29.002: "Digital cellular telecommunications system (Phase 2+); Mobile Application Part (MAP) specification (3GPP TS 29.002)". |
| [12] | 3GPP TS 29.060: "General Packet Radio Service (GPRS); GPRS Tunnelling Protocol (GTP) across the Gn and Gp Interface". |
| [13] | 3GPP TS 32.2505: "Telecommunication Management; Charging management and billing; 3G call and event data for the Circuit Switched (CS) domain <u>charging</u> ". |
| [14] | 3GPP TS 32.251: "Telecommunication Management; Charging management and billing; 3G call and event data for the Packet Switched (PS) domain <u>charging</u> ". |
| [15] | 3GPP TS 23.038: "Alphabets and language-specific information". |
| [16] | 3GPP TS 23.172: "Technical realisation of Circuit Switched (CS) multimedia service UDI/RDI fallback and service modification; Stage 2". |
| [17] – [20] | (Void) |

- [21] ETSI ES 201 296: "Integrated Services Digital Network (ISDN); Signalling System No.7; ISDN User Part (ISUP); Signalling aspects of charging".
- [22] ETSI ETS 300 287-1: "Integrated Services Digital Network (ISDN); Signalling System No.7; Transaction Capabilities (TC) version 2; Part 1: Protocol specification [ITU-T Recommendations Q.771 to Q.775 (1993), modified]".
- [23] ETSI EN 300 356-1: "Integrated Services Digital Network (ISDN); Signalling System No.7; ISDN User Part (ISUP) version 3 for the international interface; Part 1: Basic services [ITU-T Recommendations Q.761 to Q.764 (1997), modified]".
- [24] ETSI ETS 300 374-1: "Intelligent Network (IN); Intelligent Network Capability Set 1 (CS1); Core Intelligent Network Application Protocol (INAP); Part 1: Protocol specification".
- [25] ETSI EN 300 403-1: "Integrated Services Digital Network (ISDN); Digital Subscriber Signalling System No. one (DSS1) protocol; Signalling network layer for circuit-mode basic call control; Part 1: Protocol specification [ITU-T Recommendation Q.931 (1993), modified]".
- [26] ETSI EN 301 140-5: "Intelligent Network (IN); Intelligent Network Application Protocol (INAP); Capability Set 2 (CS2); Part 1: Protocol Specification".
- [27] – [40] (Void)
- [41] ITU-T Recommendation Q.71: "ISDN circuit mode switched bearer services".
- [42] ITU-T Recommendation Q.713: "Specifications of Signalling System No.7; SCCP formats and codes".
- [43] ITU-T Recommendation Q.714: "Specifications of Signalling System No.7; Signalling Connection Control Part procedures".
- [44] ITU-T Recommendation Q.762: "General function of messages and signals of the ISDN user part of signalling system no.7".
- [45] ITU-T Recommendation Q.763: "Formats and codes of the ISDN user part of Signalling System No.7".
- [46] ITU-T Recommendation Q.773: "Specifications of Signalling System No.7; Transaction capabilities formats and encoding".
- [47] ITU-T Recommendation Q.850: "Usage of cause and location in the digital subscriber signalling system no.1 and the signalling system no.7 ISDN user part".
- [48] ITU-T Recommendation Q.932: "Digital subscriber Signalling System No.1 (DSS 1) - Generic procedures for the control of ISDN supplementary services".
- [49] ITU-T Recommendation Q.1218: "Interface Recommendation for Intelligent Network CS-1".
- [50] ITU-T Recommendation Q.1224: "Distributed functional plane for intelligent network CS2".
- [51] ITU-T Recommendation Q.1228: "Interface ITU-T Recommendation for intelligent network CS2".
- [52] ITU-T Recommendation Q.1400: "Architecture framework for the development of signalling and organization, administration and maintenance protocols using OSI principles".
- [53] ITU-T Recommendation X.680: "Information technology - Abstract Syntax Notation One (ASN.1): Specification of basic notation".
- [54] ITU-T Recommendation X.681: "Information technology – Abstract Syntax Notation One (ASN.1): Information object specification".
- [55] ITU-T Recommendation X.682: "Information technology – Abstract Syntax Notation One (ASN.1): Parameterization of ASN.1 specifications".
- [56] ITU-T Recommendation X.683: "Information technology – Abstract Syntax Notation One (ASN.1): Constraint specification".

- [57] ITU-T Recommendation X.690: "ASN.1 encoding rules: Specification of Basic Encoding Rules (BER), Canonical Encoding Rules (CER) and Distinguished Encoding Rules (DER)".
- [58] ITU-T Recommendation X.880: "Data networks and open system communication - Open System Interconnection - Service definitions - Remote operations: Concepts, model and notation".
- [59] ITU-T Recommendation X.881: "Data networks and open system communication - Open System Interconnection - Service definitions - Remote operations: OSI Realizations – Remote Operations Service Element (ROSE) service definition".
- [60] ITU-T Recommendation X.882: "Data networks and open system communication - Open System Interconnection - Service definitions - Remote operations: OSI Realizations – Remote Operations Service Element (ROSE) protocol specification".
- [61] – [80] (Void)
- [81] ISO 9545 (1989): "Information technology - Open Systems Interconnection - Application Layer structure".
- [82] – [90] (Void)
- [91] ANSI T1.112-1996: "American National Standards for Telecommunications- Signalling System Number 7 (SS7) - Signalling Connection Control Part (SCCP)".
- [92] ANSI T1.113-1995: "American National Standards for Telecommunications- Signalling System Number 7 (SS7) - ISDN User Part".

Modification end

CHANGE REQUEST

⌘ **23.078 CR 749** ⌘ rev **2** ⌘ Current version: **6.3.0** ⌘

For **HELP** on using this form, see bottom of this page or look at the pop-up text over the ⌘ symbols.

Proposed change affects: UICC apps ME Radio Access Network Core Network

Title:	⌘ Correcting SDL of Process CS_gsmSSF (sheet 62)		
Source:	⌘ CN4		
Work item code:	⌘ TEI6	Date:	⌘ 02/11/2004
Category:	⌘ F	Release:	⌘ Rel-6
	Use <u>one</u> of the following categories: F (correction) A (corresponds to a correction in an earlier release) B (addition of feature), C (functional modification of feature) D (editorial modification) Detailed explanations of the above categories can be found in 3GPP TR 21.900 .		Use <u>one</u> of the following releases: Ph2 (GSM Phase 2) R96 (Release 1996) R97 (Release 1997) R98 (Release 1998) R99 (Release 1999) Rel-4 (Release 4) Rel-5 (Release 5) Rel-6 (Release 6) Rel-7 (Release 7)

Reason for change:	⌘ For procedure of Process CS_gsmSSF (sheet 62) in TS 23.078, In the Wait_For_Request state, the CAMEL relationship has not been established yet, so CS_gsmSSF can not receive Int_Request_SL , Int_Request_ML and Int_Request_DL operations at this moment. The Wait_For_Request state should be deleted from this sheet.
Summary of change:	⌘ Delete the Wait_For_Request state from Process CS_gsmSSF (sheet 62).
Consequences if not approved:	⌘ It may lead to confuse.

Clauses affected:	⌘ Figure 4.99-62						
Other specs affected:	<table border="1" style="display: inline-table; border-collapse: collapse;"> <tr> <td style="width: 20px; text-align: center;">Y</td> <td style="width: 20px; text-align: center;">N</td> </tr> <tr> <td style="text-align: center;"><input type="checkbox"/></td> <td style="text-align: center;"><input checked="" type="checkbox"/></td> </tr> </table> Other core specifications	Y	N	<input type="checkbox"/>	<input checked="" type="checkbox"/>	⌘	
Y	N						
<input type="checkbox"/>	<input checked="" type="checkbox"/>						
	<table border="1" style="display: inline-table; border-collapse: collapse;"> <tr> <td style="text-align: center;"><input checked="" type="checkbox"/></td> </tr> </table> Test specifications	<input checked="" type="checkbox"/>					
<input checked="" type="checkbox"/>							
	<table border="1" style="display: inline-table; border-collapse: collapse;"> <tr> <td style="text-align: center;"><input checked="" type="checkbox"/></td> </tr> </table> O&M Specifications	<input checked="" type="checkbox"/>					
<input checked="" type="checkbox"/>							
Other comments:	⌘						

How to create CRs using this form:

Comprehensive information and tips about how to create CRs can be found at <http://www.3gpp.org/specs/CR.htm>. Below is a brief summary:

- 1) Fill out the above form. The symbols above marked ⌘ contain pop-up help information about the field that they are closest to.

- 2) Obtain the latest version for the release of the specification to which the change is proposed. Use the MS Word "revision marks" feature (also known as "track changes") when making the changes. All 3GPP specifications can be downloaded from the 3GPP server under <ftp://ftp.3gpp.org/specs/> For the latest version, look for the directory name with the latest date e.g. 2001-03 contains the specifications resulting from the March 2001 TSG meetings.
- 3) With "track changes" disabled, paste the entire CR form (use CTRL-A to select it) into the specification just in front of the clause containing the first piece of changed text. Delete those parts of the specification which are not relevant to the change request.

First modification

4.5.7.5 Process CS_gsmSSF and procedures

Process CS_gsmSSF

62(62)

/* Invocation of CS_gsmSSF */

/* Signals to/from the left are to/from the MSC; signals to/from the right are to/from the process CSA_gsmSSF unless otherwise marked. */

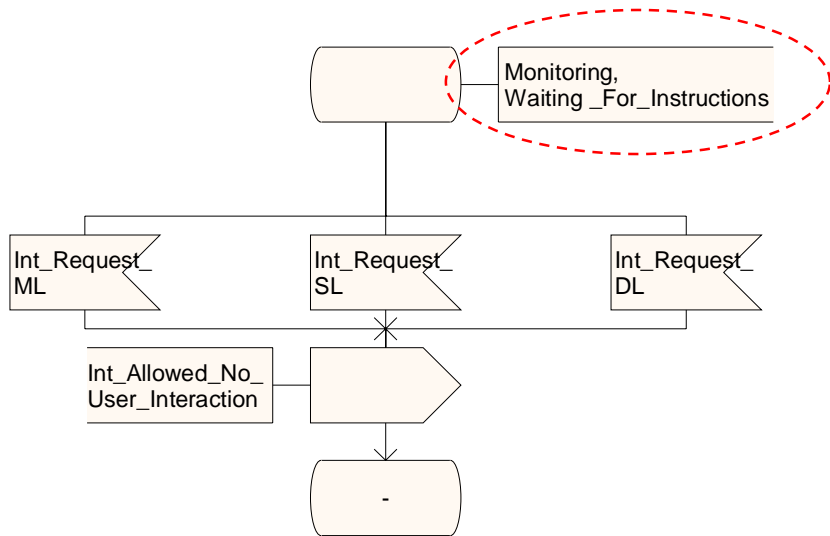
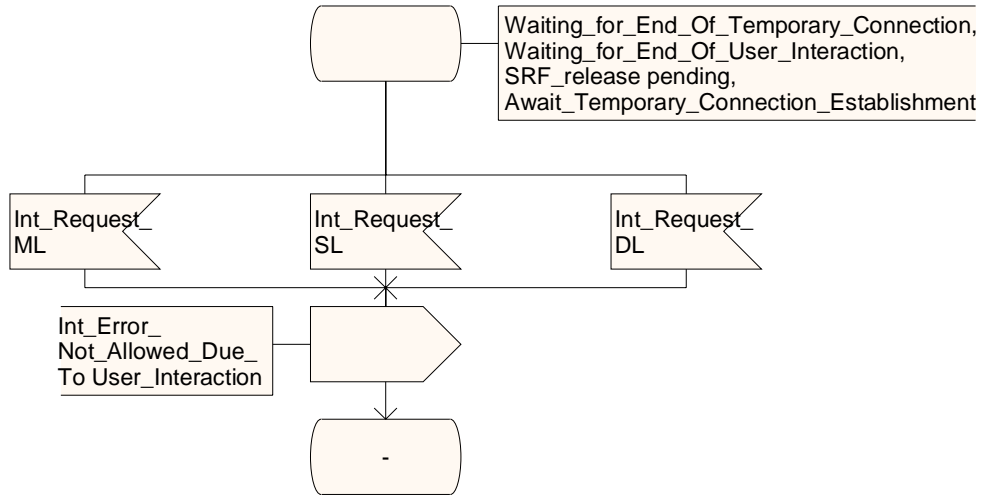


Figure 4.99-62: Process CS_gsmSSF (sheet 62)

Process CS_gsmSSF

62(62)

/* Invocation of CS_gsmSSF */

/* Signals to/from the left are to/from the MSC; signals to/from the right are to/from the process CSA_gsmSSF unless otherwise marked. */

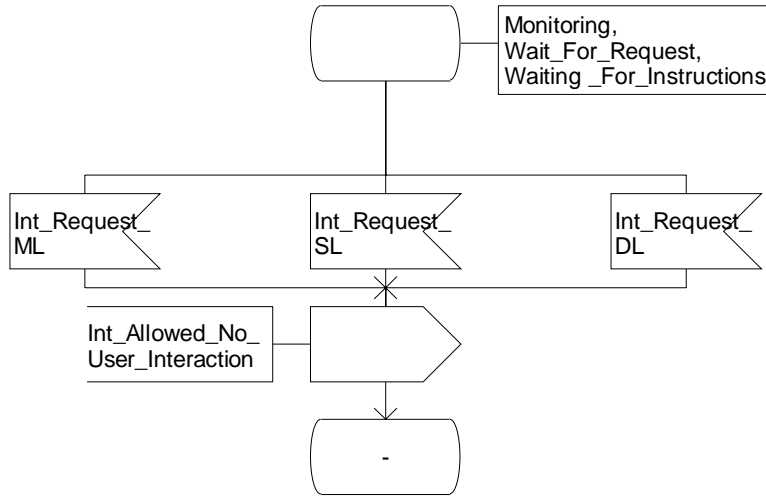
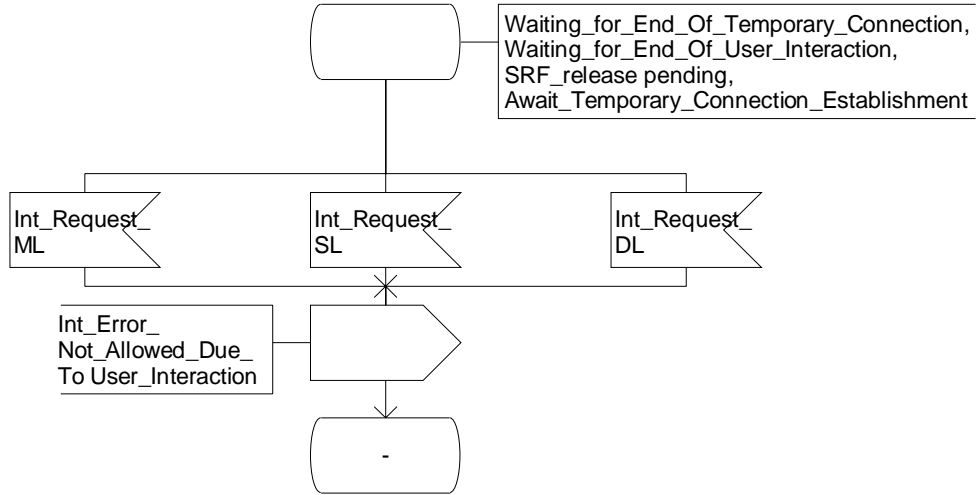


Figure 4.99-62: Process CS_gsmSSF (sheet 62)

Modification end

CHANGE REQUEST

⌘ **23.078** **CR 757** ⌘ rev **1** ⌘ Current version: **6.3.0** ⌘

For **HELP** on using this form, see bottom of this page or look at the pop-up text over the ⌘ symbols.

Proposed change affects: UICC apps ME Radio Access Network Core Network

Title:	⌘ Warning Tone				
Source:	⌘ CN4				
Work item code:	⌘ TEI6	Date:	⌘ 17/11/2004		
Category:	⌘ F	Release:	⌘ Rel-6		
	Use <u>one</u> of the following categories:		Use <u>one</u> of the following releases:		
	F (correction) A (corresponds to a correction in an earlier release) B (addition of feature), C (functional modification of feature) D (editorial modification)		Ph2 (GSM Phase 2) R96 (Release 1996) R97 (Release 1997) R98 (Release 1998) R99 (Release 1999) Rel-4 (Release 4) Rel-5 (Release 5) Rel-6 (Release 6) Rel-7 (Release 7)		
	Detailed explanations of the above categories can be found in 3GPP TR 21.900 .				

Reason for change:	⌘ The handling in the gsmSSF for the CAP operation Apply Charging does not take into account the case where the warning time for the tone to be played is longer than the remaining call time. As a result the warning tone is not played at all although the gsmSCF requested to play a tone.
Summary of change:	⌘ In the SDL figure 4.104-1 the Timer value for Tw(pty) is set to the minimal positive value if the subtraction of the warning time from the total call time results in a non positive value.
Consequences if not approved:	⌘ No warning tone is played.

Clauses affected:	⌘ Figure 4.104-1								
Other specs affected:	<table style="display: inline-table; border-collapse: collapse;"> <tr> <td style="border: 1px solid black; padding: 2px;">Y</td> <td style="border: 1px solid black; padding: 2px;">N</td> </tr> <tr> <td style="border: 1px solid black; padding: 2px;"> </td> <td style="border: 1px solid black; padding: 2px;">X</td> </tr> <tr> <td style="border: 1px solid black; padding: 2px;"> </td> <td style="border: 1px solid black; padding: 2px;">X</td> </tr> <tr> <td style="border: 1px solid black; padding: 2px;"> </td> <td style="border: 1px solid black; padding: 2px;">X</td> </tr> </table> Other core specifications ⌘ Test specifications ⌘ O&M Specifications ⌘	Y	N		X		X		X
Y	N								
	X								
	X								
	X								
Other comments:	⌘								

How to create CRs using this form:

Comprehensive information and tips about how to create CRs can be found at <http://www.3gpp.org/specs/CR.htm>. Below is a brief summary:

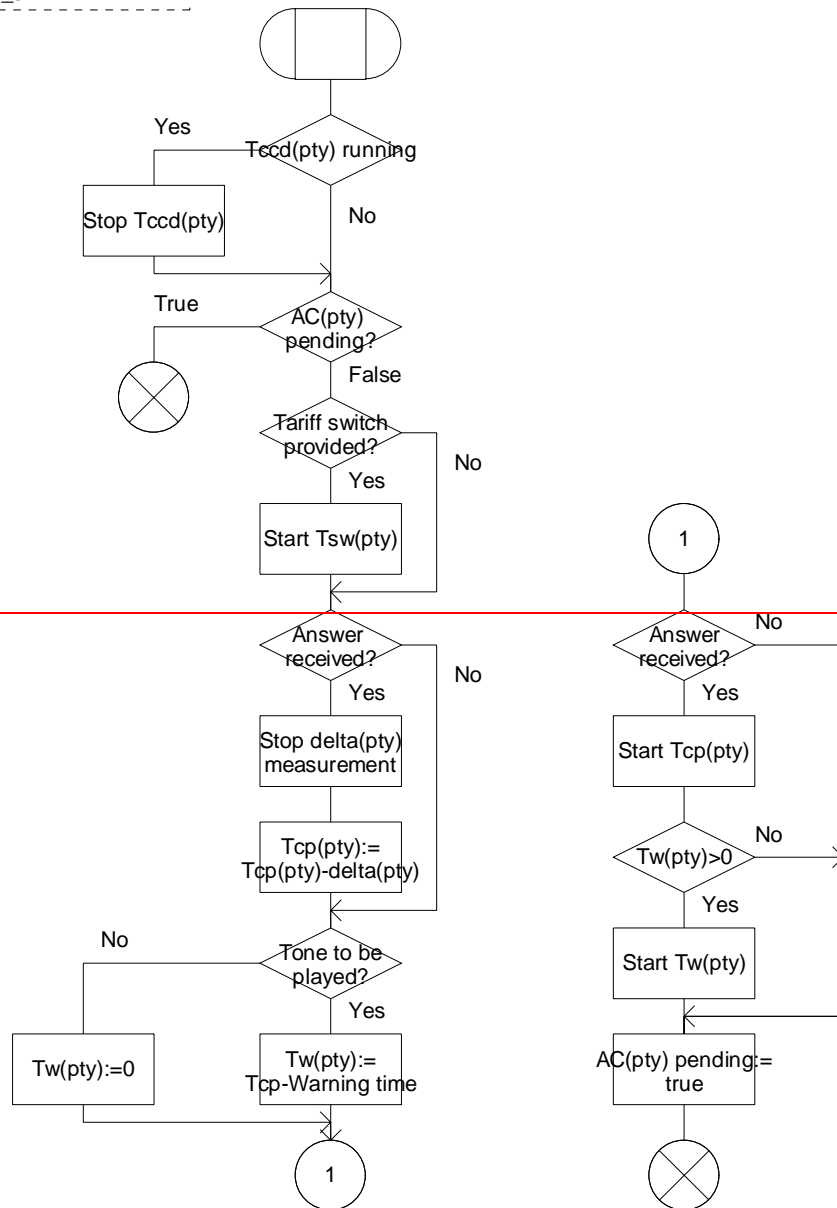
- 1) Fill out the above form. The symbols above marked ⌘ contain pop-up help information about the field that they are closest to.

- 2) Obtain the latest version for the release of the specification to which the change is proposed. Use the MS Word "revision marks" feature (also known as "track changes") when making the changes. All 3GPP specifications can be downloaded from the 3GPP server under <ftp://ftp.3gpp.org/specs/> For the latest version, look for the directory name with the latest date e.g. 2001-03 contains the specifications resulting from the March 2001 TSG meetings.
- 3) With "track changes" disabled, paste the entire CR form (use CTRL-A to select it) into the specification just in front of the clause containing the first piece of changed text. Delete those parts of the specification which are not relevant to the change request.

Procedure Handle_AC

1(1)

/* This procedure shows the handling in the gsmSSF for the operation CAP Apply Charging. */
 FPAR IN pty LegID_or_srfID



Procedure Handle_AC

1(1)

/* This procedure shows the handling in the gsmSSF for the operation CAP Apply Charging. */
 FPAR IN pty LegID_or_srfID

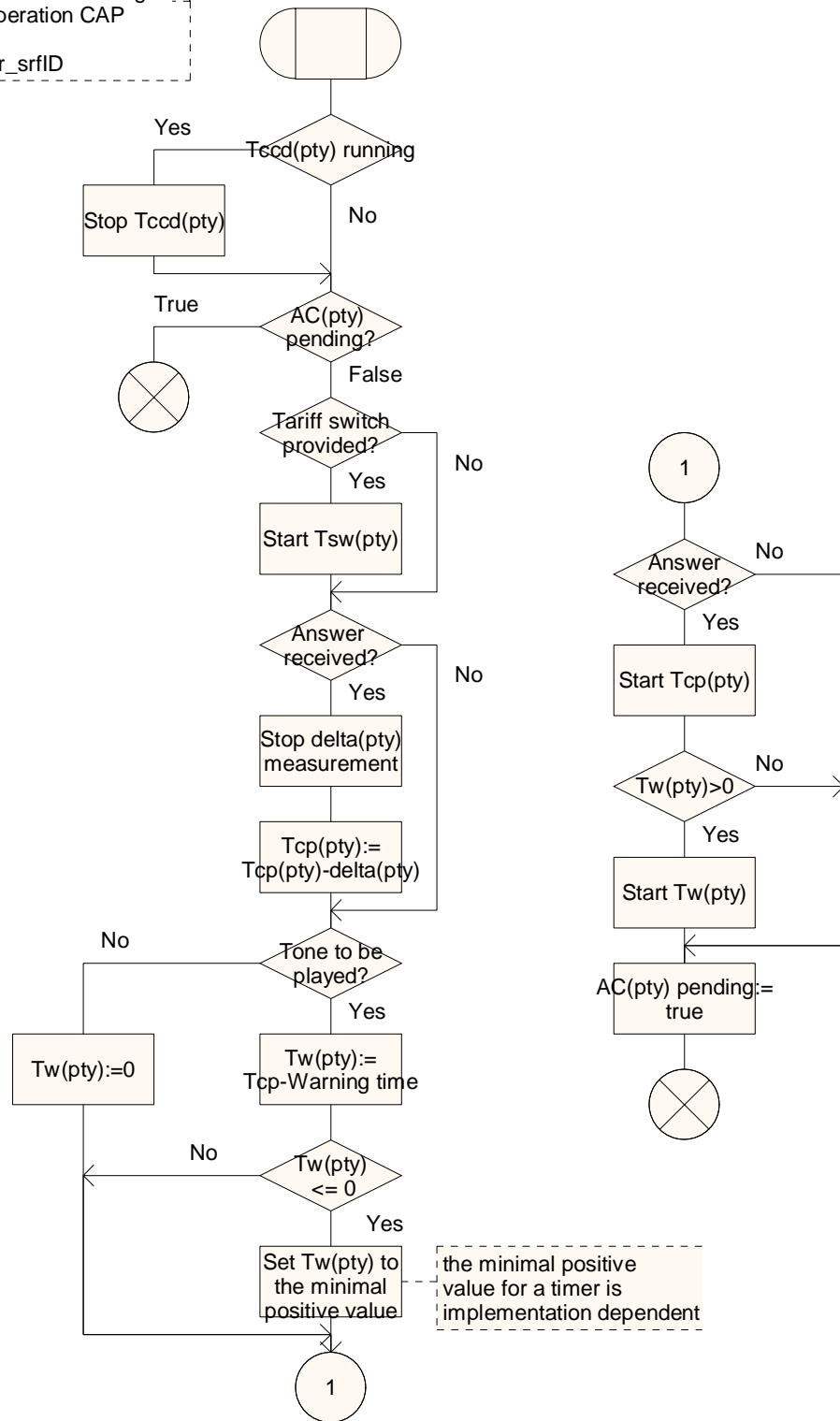


Figure 4.104-1: Procedure Handle_AC (sheet 1)

CHANGE REQUEST

⌘ **23.078 CR 753** ⌘ rev **1** ⌘ Current version: **6.3.0** ⌘

For **HELP** on using this form, see bottom of this page or look at the pop-up text over the ⌘ symbols.

Proposed change affects: UICC apps ME Radio Access Network Core Network

Title:	⌘ Correction in Sheet 18 of Process CSA_gsmSSF		
Source:	⌘ CN4		
Work item code:	⌘ TEI6	Date:	⌘ 17/11/2004
Category:	⌘ F	Release:	⌘ Rel-6
	<i>Use one of the following categories:</i> F (correction) A (corresponds to a correction in an earlier release) B (addition of feature), C (functional modification of feature) D (editorial modification) Detailed explanations of the above categories can be found in 3GPP TR 21.900 .		<i>Use one of the following releases:</i> Ph2 (GSM Phase 2) R96 (Release 1996) R97 (Release 1997) R98 (Release 1998) R99 (Release 1999) Rel-4 (Release 4) Rel-5 (Release 5) Rel-6 (Release 6) Rel-7 (Release 7)

Reason for change:	⌘ In Process CSA_gsmSSF (sheet 18), it is indicated that the Exit state is the same as when the message was received. Apparently, the states are One_CS, Multiple_CS. However, if we entered in the flow through the connector 3, it means we were coming from the sheet 11, and the immediate previous state in the latter sheet is "Wait_For_DL_Ack". Thus, it may appear that, at the sheet 18, we should go to the "Wait_For_DL_Ack" state, which is not correct.
Summary of change:	⌘ Change sheet 18 so that instead of remaining in the same state (""), there is a link above the decision about CS (>1,=1,=0).
Consequences if not approved:	⌘ The SDL will be wrong leading to faulty implementation for the handling of CSs. This will cause unpredictable behaviour in SSF.

Clauses affected:	⌘ 4.5.7.7 (sheet 18)										
Other specs affected:	<table border="1" style="display: inline-table; border-collapse: collapse;"> <tr> <td style="text-align: center;">Y</td> <td style="text-align: center;">N</td> </tr> <tr> <td style="text-align: center;"><input type="checkbox"/></td> <td style="text-align: center;"><input checked="" type="checkbox"/></td> </tr> <tr> <td style="text-align: center;"><input type="checkbox"/></td> <td style="text-align: center;"><input checked="" type="checkbox"/></td> </tr> <tr> <td style="text-align: center;"><input type="checkbox"/></td> <td style="text-align: center;"><input checked="" type="checkbox"/></td> </tr> </table> Other core specifications	Y	N	<input type="checkbox"/>	<input checked="" type="checkbox"/>	<input type="checkbox"/>	<input checked="" type="checkbox"/>	<input type="checkbox"/>	<input checked="" type="checkbox"/>	⌘	
Y	N										
<input type="checkbox"/>	<input checked="" type="checkbox"/>										
<input type="checkbox"/>	<input checked="" type="checkbox"/>										
<input type="checkbox"/>	<input checked="" type="checkbox"/>										
Other comments:	⌘										

How to create CRs using this form:

Comprehensive information and tips about how to create CRs can be found at <http://www.3gpp.org/specs/CR.htm>. Below is a brief summary:

- 1) Fill out the above form. The symbols above marked ⌘ contain pop-up help information about the field that they are closest to.
- 2) Obtain the latest version for the release of the specification to which the change is proposed. Use the MS Word "revision marks" feature (also known as "track changes") when making the changes. All 3GPP specifications can be downloaded from the 3GPP server under <ftp://ftp.3gpp.org/specs/> For the latest version, look for the directory name with the latest date e.g. 2001-03 contains the specifications resulting from the March 2001 TSG meetings.
- 3) With "track changes" disabled, paste the entire CR form (use CTRL-A to select it) into the specification just in front of the clause containing the first piece of changed text. Delete those parts of the specification which are not relevant to the change request.

First modification

4.5.7.7 Process CSA_gsmSSF and procedures

The call gap information flow can only be received for an opened transaction between the CSA_gsmSSF and the gsmSCF.

...omitted text and flows...

Process CSA_gsmSSF

17(23)

/* A process in the gsmSSF to co-ordinate the Call Segments for a call. */

/* Signals to/from the left are to/from one or more instances of the process CS_gsmSSF; signals to/from the right are to/from the gsmSCF. */

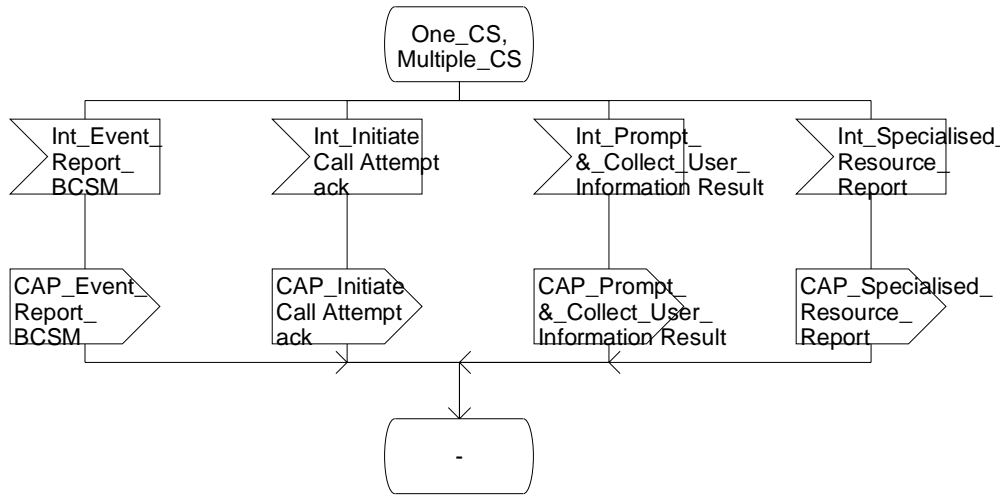


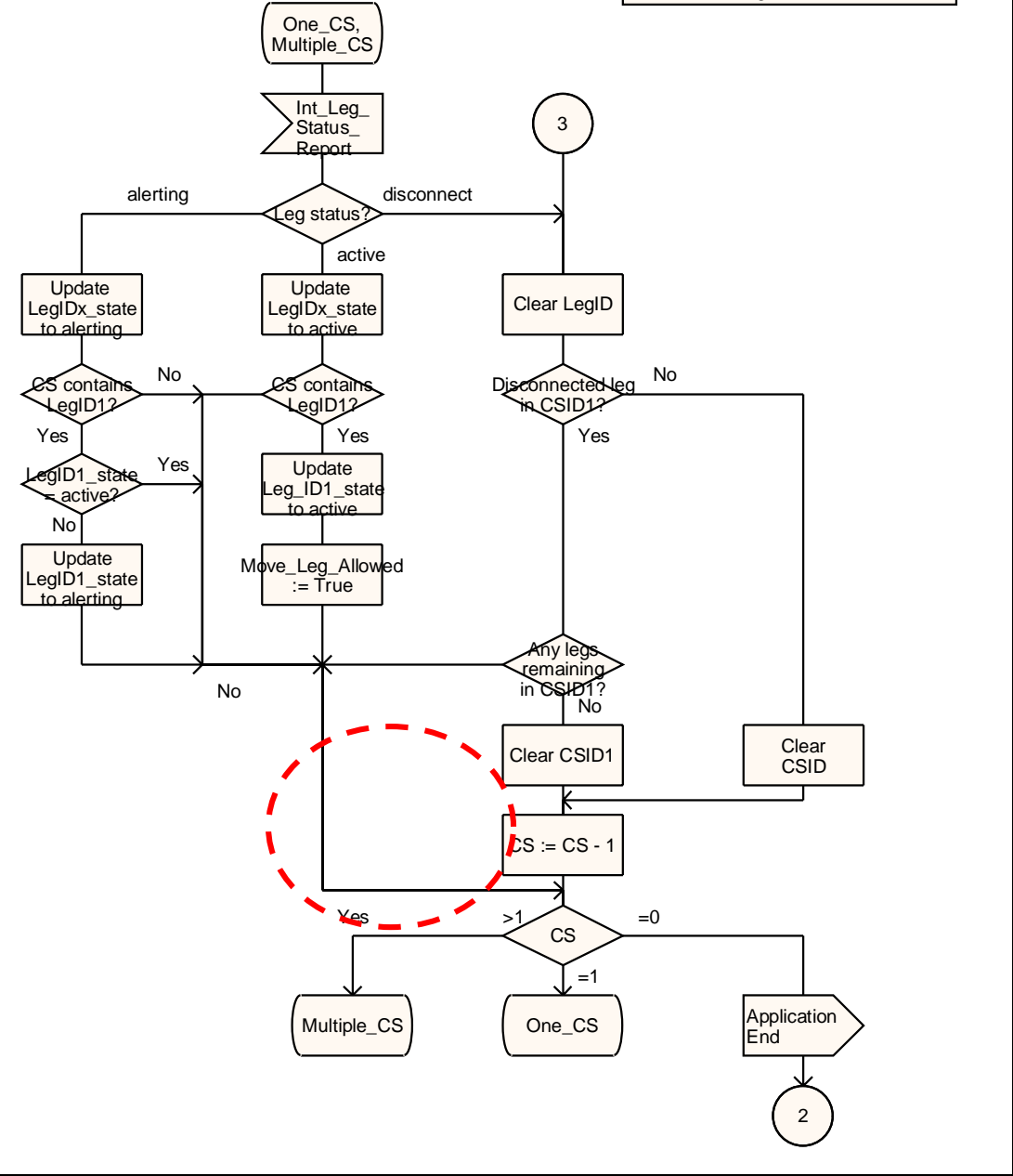
Figure 4.116-17: Process CSA_gsmSSF (sheet 17)

Process CSA_gsmSSF

18(23)

/* A process in the gsmSSF to co-ordinate the Call Segments for a call. */

/* Signals to/from the left are to/from one or more instances of the process CS_gsmSSF; signals to/from the right are to/from the gsmSCF. */



Process CSA_gsmSSF

18(23)

/* A process in the gsmSSF to co-ordinate the Call Segments for a call. */

/* Signals to/from the left are to/from one or more instances of the process CS_gsmSSF; signals to/from the right are to/from the gsmSCF. */

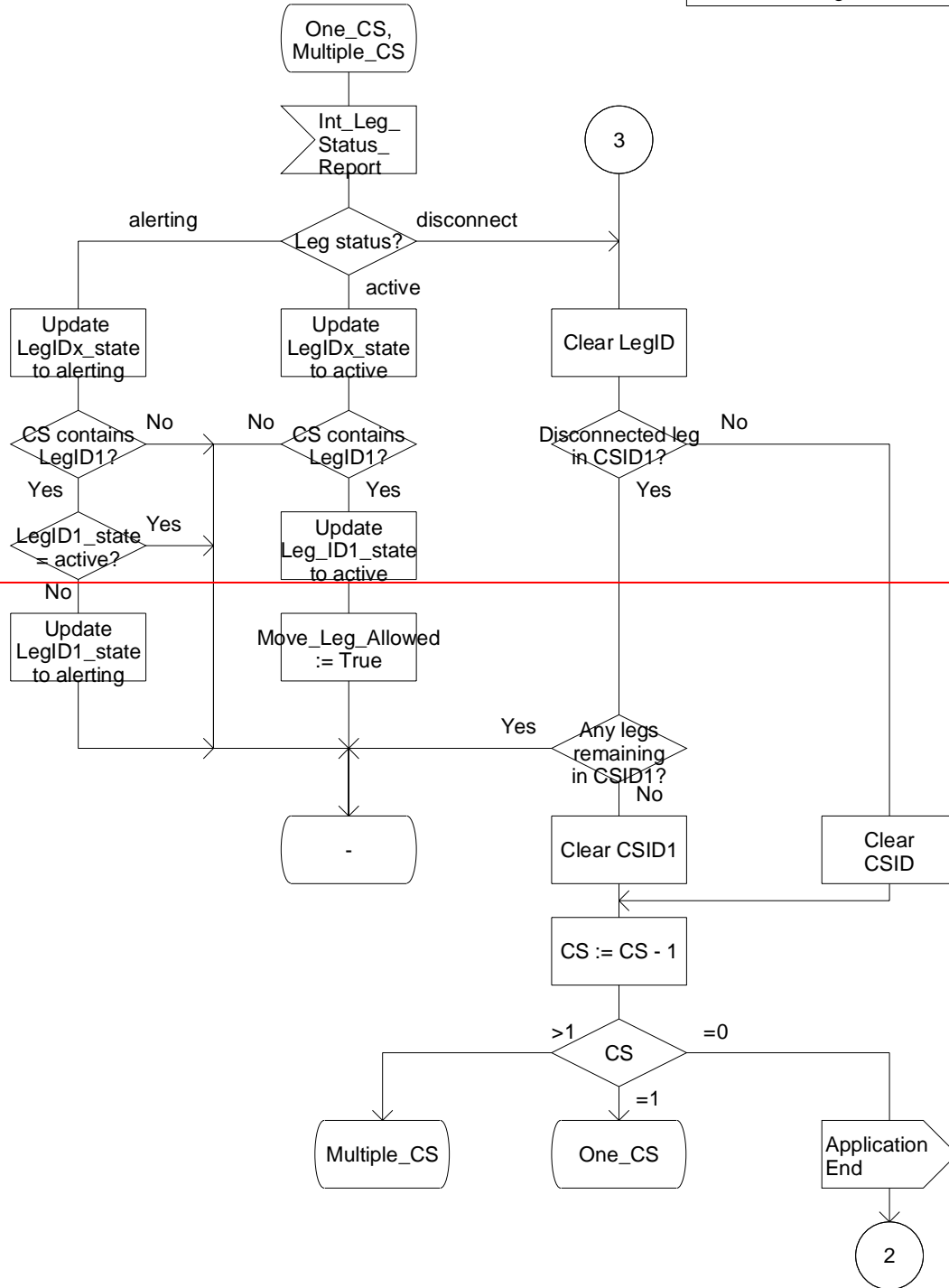


Figure 4.116-18: Process CSA_gsmSSF (sheet 18)

Process CSA_gsmSSF

19(23)

/* A process in the gsmSSF to co-ordinate the Call Segments for a call. */

/* Signals to/from the left are to/from one or more instances of the process CS_gsmSSF; signals to/from the right are to/from the gsmSCF. */

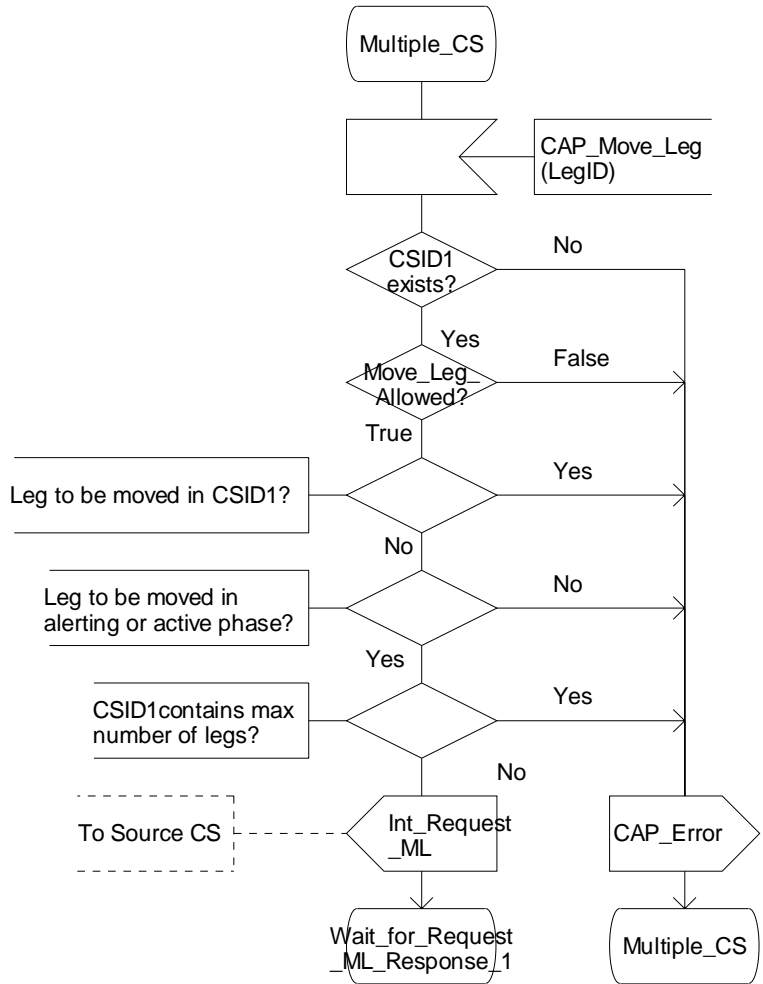


Figure 4.116-19: Process CSA_gsmSSF (sheet 19)

Modification end