

CHANGE REQUEST

⌘ **23.079 CR 025** ⌘ rev **1** ⌘ Current version: **5.2.0** ⌘

Proposed change affects: UICC apps ME Radio Access Network Core Network

Title:	⌘ Correction to interaction between ORLCF and forwarding notification		
Source:	⌘ Ericsson L.M.		
Work item code:	⌘ CAMEL4	Date:	⌘ 28/05/2003
Category:	⌘ F	Release:	⌘ Rel-5
	Use <u>one</u> of the following categories:		Use <u>one</u> of the following releases:
	F (correction)		2 (GSM Phase 2)
	A (corresponds to a correction in an earlier release)		R96 (Release 1996)
	B (addition of feature),		R97 (Release 1997)
	C (functional modification of feature)		R98 (Release 1998)
	D (editorial modification)		R99 (Release 1999)
			Rel-4 (Release 4)
			Rel-5 (Release 5)
			Rel-6 (Release 6)

Reason for change:	⌘ According to TS 23.079, the T-CSI CAMEL Service should be notified about the call forwarding in the GMSC, before the GMSC has verified that the call forwarding can be performed at the GMSC server due to optimal routing.
	If the GMSC denies the optimal routing request from the VMSC, the optimal routing will be performed by the VMSC. However, the T-CSI CAMEL Service was already informed about the pending forwarding in the GMSC. Hence, this means that the T-CSI CAMEL Service does not know where the call forwarding takes place.
Summary of change:	⌘ The T-CSI CAMEL Service should be informed after the GMSC has verified that the optimal routing can apply in the GMSC.
Consequences if not approved:	⌘ Incorrect charging for pre-paid subscribers; this may hamper the deployment of optimal routing.

Clauses affected:	⌘ 9.4.2 (Procedure OR_Handle_RCH)										
Other specs affected:	<table border="1" style="display: inline-table; border-collapse: collapse;"> <tr> <td style="width: 20px; text-align: center;">Y</td> <td style="width: 20px; text-align: center;">N</td> </tr> <tr> <td style="text-align: center;"><input type="checkbox"/></td> <td style="text-align: center;"><input checked="" type="checkbox"/></td> </tr> <tr> <td style="text-align: center;"><input type="checkbox"/></td> <td style="text-align: center;"><input checked="" type="checkbox"/></td> </tr> <tr> <td style="text-align: center;"><input type="checkbox"/></td> <td style="text-align: center;"><input checked="" type="checkbox"/></td> </tr> </table>	Y	N	<input type="checkbox"/>	<input checked="" type="checkbox"/>	<input type="checkbox"/>	<input checked="" type="checkbox"/>	<input type="checkbox"/>	<input checked="" type="checkbox"/>	Other core specifications Test specifications O&M Specifications	⌘
Y	N										
<input type="checkbox"/>	<input checked="" type="checkbox"/>										
<input type="checkbox"/>	<input checked="" type="checkbox"/>										
<input type="checkbox"/>	<input checked="" type="checkbox"/>										
Other comments:	⌘										

***** First Modified Section *****

9.4.2 Procedure OR_Handle_RCH

~~Sheet 2: the procedure Activate_CF_Process is specified in 3GPP TS 23.018 [6].~~

~~Sheet 1: if the GMSC interrogates the HLR for a Forwarded-to number, the Routeing address is the Forwarded-to number received in the Send Routeing Info ack; otherwise the Routeing address is the Forwarded-to number received in the Resume Call Handling.~~

~~Sheet 31: the procedure CAMEL_MT_GMSC_Notify_CF is specific to CAMEL phase 2 or higher; it is specified in 3GPP TS 23.078 [7]. If the GMSC does not support CAMEL phase 2 or higher, processing continues from the "Continue" exit of the test "Result".~~

~~Sheet 2: the task "Destination address:=FTN" is executed only if the GMSC supports optimal routeing of basic mobile-to-mobile calls.~~

~~Sheet 2: the process MT_CF_MSC is specified in 3GPP TS 23.018 [6].~~

~~Sheet 32: the procedure UUS_GMSC_Check_Forwarding is specific to UUS; it is specified in 3GPP TS 23.087 [9].~~

~~Sheet 32: the procedure CAMEL_Store_Destination_Address is specific to CAMEL phase 3 or higher; it is specified in 3GPP TS 23.078 [7].~~

~~Sheet 32: the called party address sent in the IAM to the process MT_CF_MSC is the Forwarded-to number received in the Perform Call Forwarding ack.~~

~~Sheet 1: if the GMSC interrogates the HLR for a Forwarded-to number, the Routeing address is the Forwarded-to number received in the Send Routeing Info ack; otherwise the Routeing address is the Forwarded-to number received in the Resume Call Handling.~~

~~Sheet 1: the task "Destination address:=FTN" is executed only if the GMSC supports optimal routeing of basic mobile-to-mobile calls.~~

~~Sheet 1: the procedure Route_permitted is called to verify the number received in Resume Call Handling or the number received from HLR. If the result is "False", then the GMSC disallows the Optimal Routeing. The call forwarding will now be done by the VMSC.~~

Note When the procedure Route_permitted returns result "False", then the gsmSCF is not informed about the forwarding and can therefore not provide an alternative destination address. Reason is that once the gsmSCF is informed about forwarding, the call forwarding can not be returned to the VMSC.

~~Sheet 2: the procedure CAMEL_MT_GMSC_Notify_CF is specific to CAMEL phase 2 or higher; it is specified in 3GPP TS 23.078 [7]. If the GMSC does not support CAMEL phase 2 or higher, processing continues from the "Continue" exit of the test "Result".~~

~~If the result of the procedure CAMEL_MT_GMSC_Notify_CF is "Fail" or "Release", then the call will be released.~~

~~If the result of the procedure CAMEL_MT_GMSC_Notify_CF is "Reconnect", then the GMSC allows the Optimal Routeing. The GMSC will then start a call forwarding process.~~

~~Sheet 3: the procedure Activate_CF_Process is specified in 3GPP TS 23.018 [6]. When procedure Activate_CF_Process returns result "Release" or "Fail", the call is released.~~

~~If the result is "Pass", then the procedure Route_permitted is called, to verify the forwarding destination, which may have been modified in the procedure Activate_CF_Process. If the result of procedure Route_permitted is "False", then the call is released.~~

Note In the case that the procedure Route_permitted returns result "False" after Pass, then it is not feasible to return the call forwarding to the VMSC, since the gsmSCF was already informed that forwarding will take place in the GMSC.

~~Sheet 3: the procedure UUS_GMSC_Check_Forwarding is specific to UUS; it is specified in 3GPP TS 23.087 [9].~~

Sheet 3: the procedure CAMEL Store Destination Address is specific to CAMEL phase 3 or higher; it is specified in 3GPP TS 23.078 [7].

Sheet 3: the called party address sent in the IAM to the process MT_CF_MSC is the Forwarded-to number received in the Perform Call Forwarding ack.

Sheet 3: the process MT_CF_MSC is specified in 3GPP TS 23.018 [6].

Sheet 4: when the procedure Route_permitted on sheet 1 returns result "False", then the GMSC returns "OR not allowed" to the VMSC. The call forwarding will now be done by the VMSC.

***** Second Modified Section *****

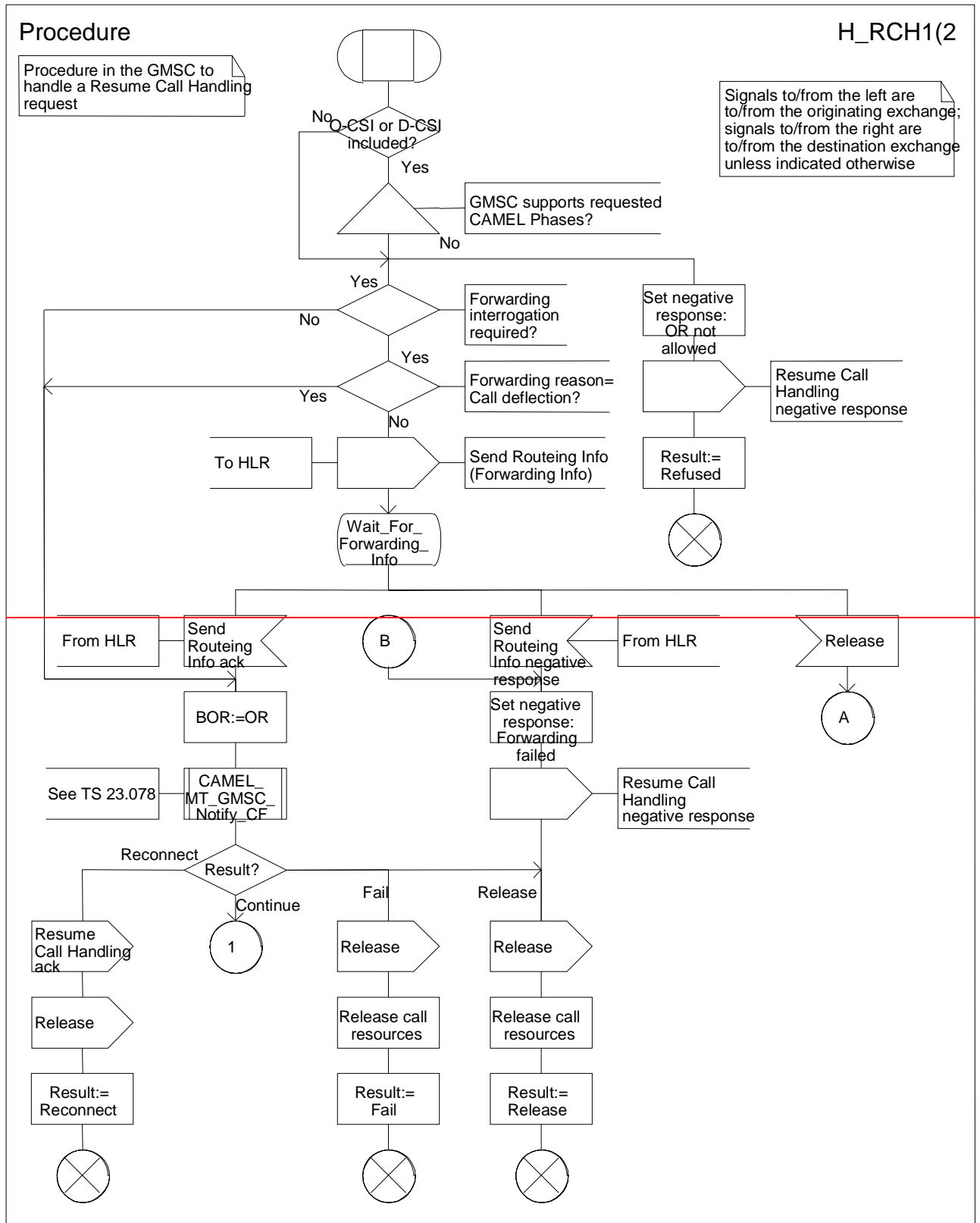


Figure 7a: Procedure OR_Handle_RCH (sheet 1)

Procedure

H_RCH2(2)

Procedure in the GMSC to handle a Resume Call Handling request

Signals to/from the left are to/from the originating exchange; signals to/from the right are to/from the destination exchange unless indicated otherwise

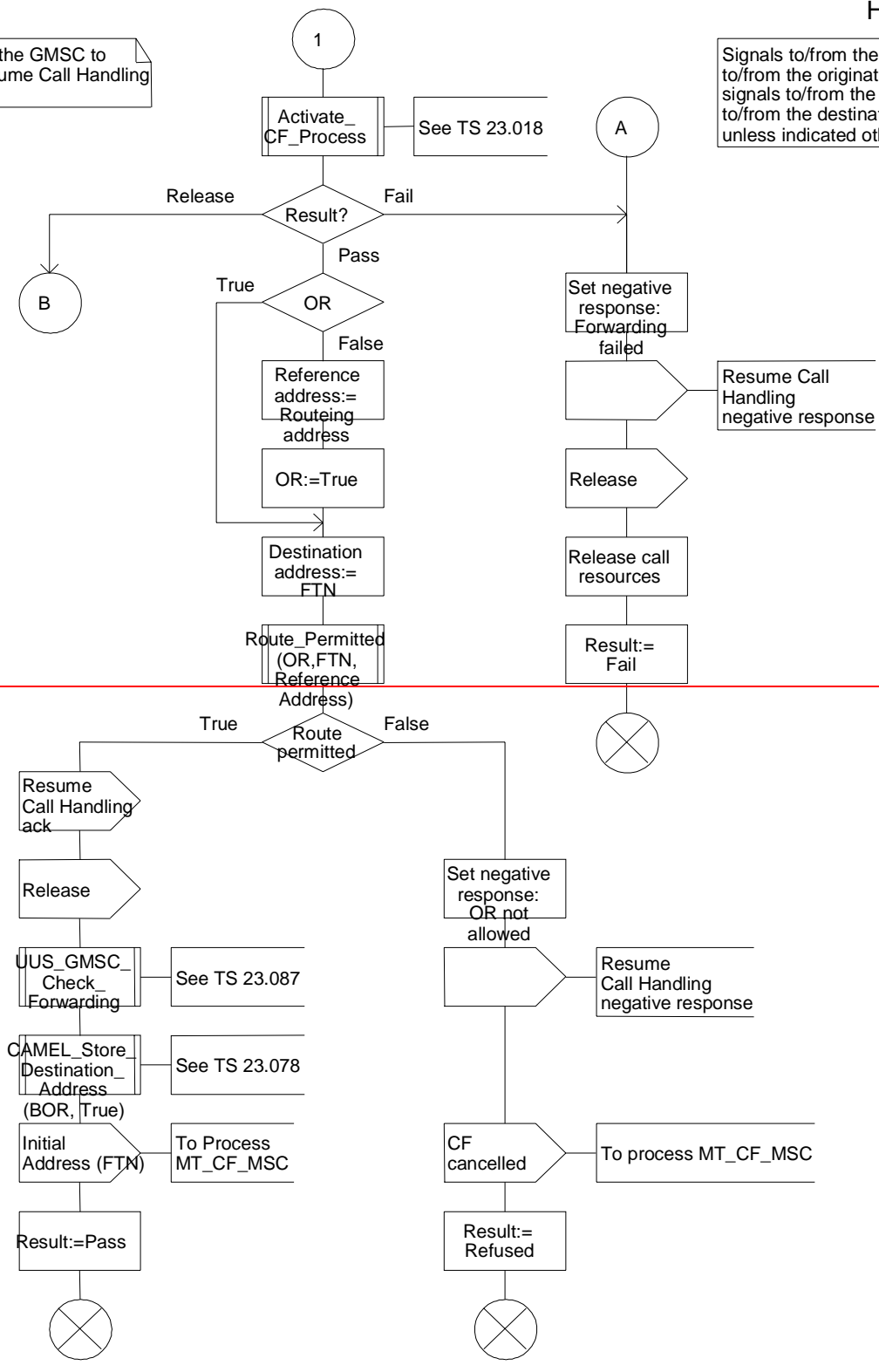


Figure 7b: Procedure OR_Handle_RCH (sheet 2)

Procedure OR_Handle_RCH

H_RCH1(4)

Procedure in the GMSC to handle a Resume Call Handling request

Signals to/from the left are to/from the originating exchange; signals to/from the right are to/from the destination exchange unless indicated otherwise

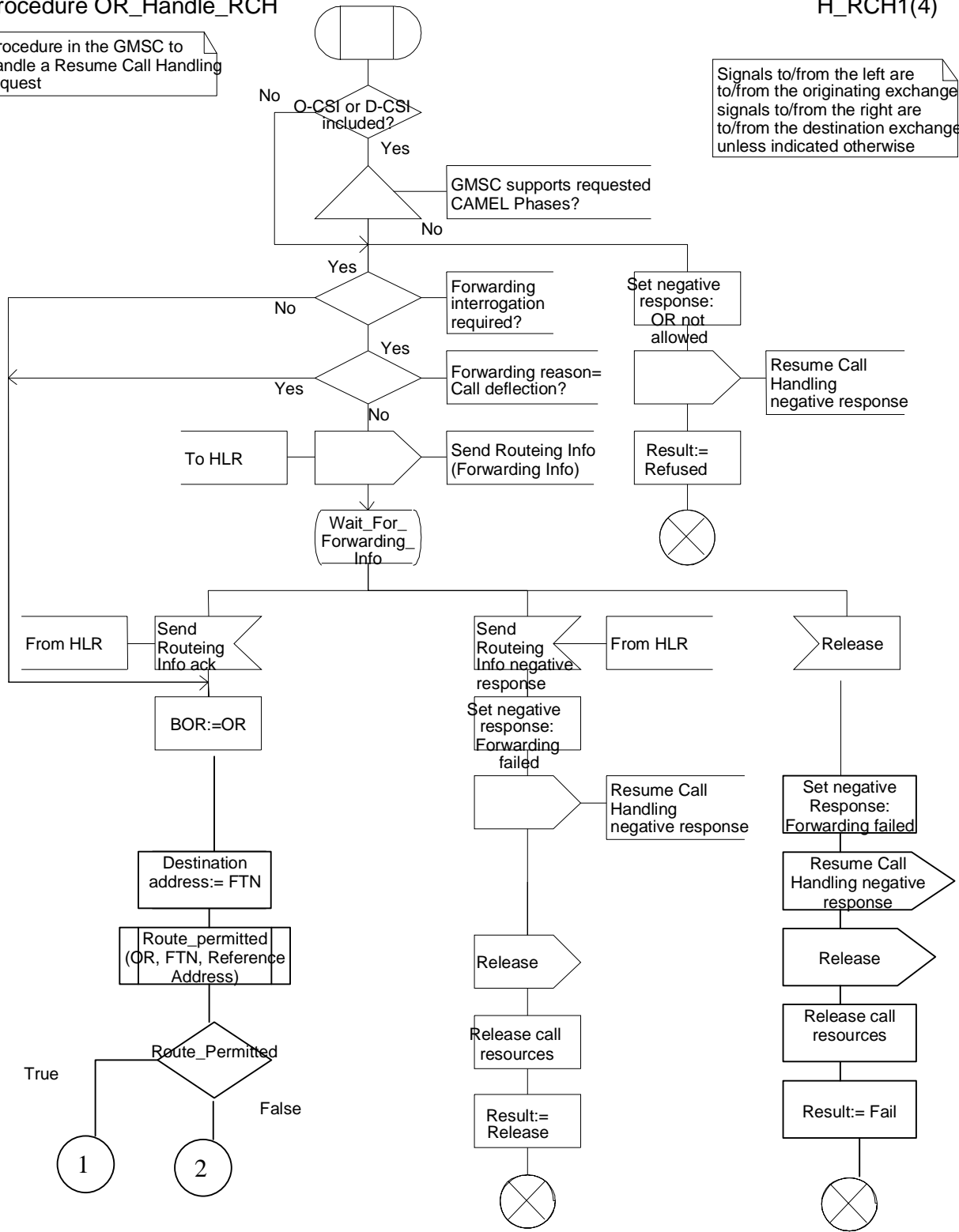


Figure 7a: Procedure OR Handle RCH (sheet 1)

Procedure OR_Handle_CH

H_RCH2(4)

Procedure in the GMSC
handle a Resume Call
Handling request

Signals to/from the left are
to/from the originating exchange;
signals to/from the right are
to/from the destination exchange
unless indicated otherwise

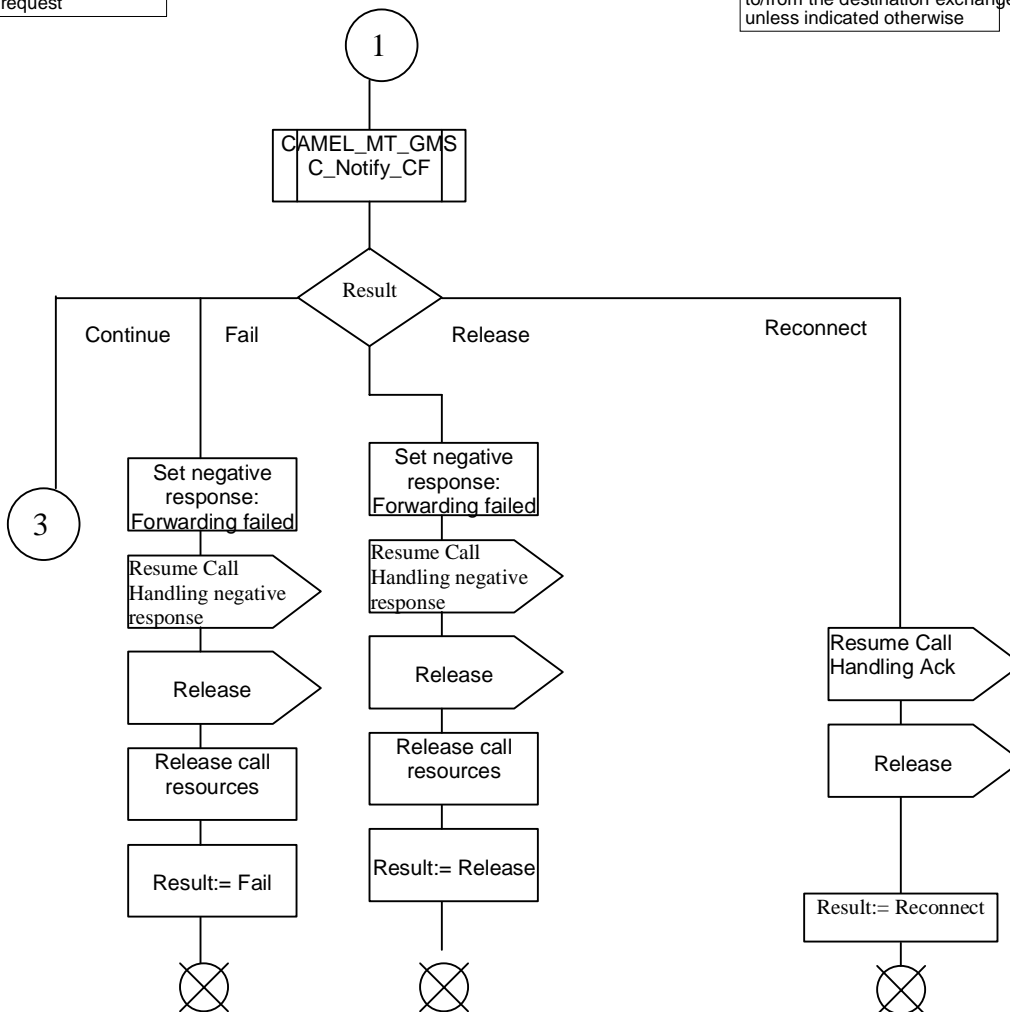


Figure 7b: Procedure OR_Handle_RCH (sheet 2)

Procedure

H_RCH3(4)

Procedure in the GMSC to handle a Resume Call Handling request

Signals to/from the left are to/from the originating exchange; signals to/from the right are to/from the destination exchange unless indicated otherwise

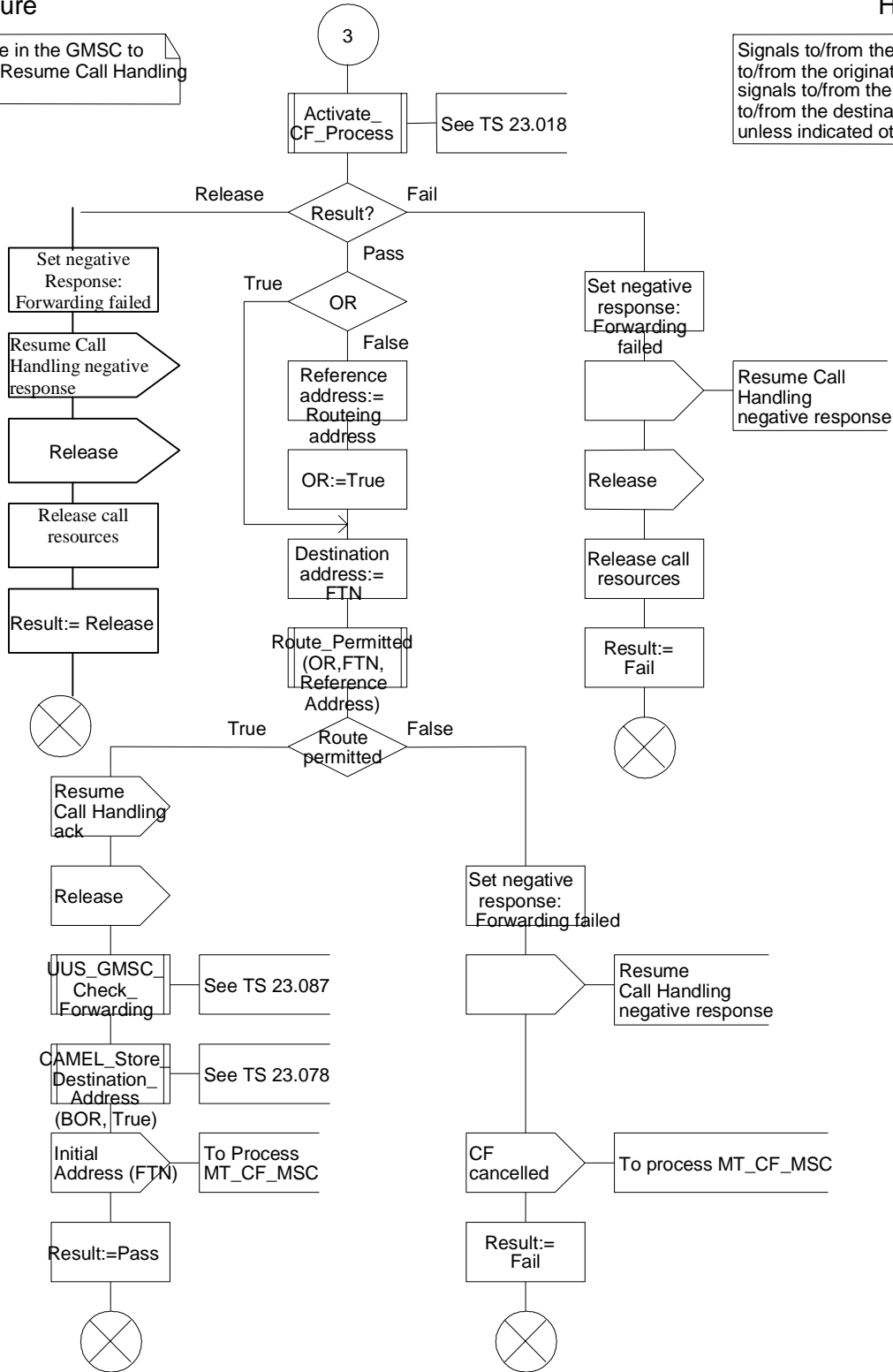


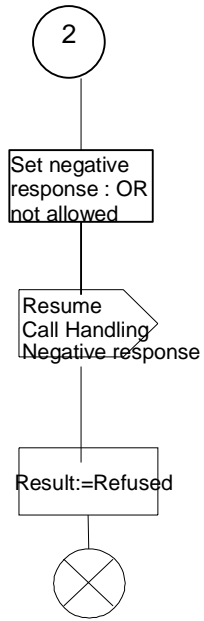
Figure 7c: Procedure OR Handle RCH (sheet 3)

Procedure OR_Handle_RCH

H_RCH4(4)

Procedure in the GMSC to handle a Resume Call Handling request

Signals to/from the left are to/from the originating exchange; signals to/from the right are to/from the destination exchange unless indicated otherwise



[Figure 7d: Procedure OR Handle RCH \(sheet 4\)](#)

***** End of Document *****