

3GPP TSG CN Plenary Meeting #20
4th – 6th June 2003 Hämeenlinna, FINLAND.

NP-030225

Source: TSG CN WG4
Title: Corrections on Early UE; (No UESBI, IMEISV)
Agenda item: 8.8
Document for: APPROVAL

Spec	CR	Rev	Doc-2nd-Level	Phase	Subject	Cat	Ver_C
29.002	627	1	N4-030648	Rel-5	Transfer of IMEISV at handover	F	5.5.0
29.002	628	1	N4-030649	Rel-6	Transfer of IMEISV at handover	A	6.1.0
29.010	089	1	N4-030650	Rel-5	Handling of UE-specific behaviour data in the relay MSC	F	5.2.0
23.012	011		N4-030653	Rel-5	Addition of procedure to retrieve UE-specific behaviour data	F	5.0.0
23.018	125		N4-030661	Rel-5	Addition of procedure to retrieve UE-specific behaviour data	F	5.5.0

CHANGE REQUEST

⌘ **29.002 CR 627** ⌘ rev **1** ⌘ Current version: **5.5.0** ⌘

For **HELP** on using this form, see bottom of this page or look at the pop-up text over the ⌘ symbols.

Proposed change affects: UICC apps ME Radio Access Network Core Network

Title:	⌘ Transfer of IMEISV at handover		
Source:	⌘ CN4		
Work item code:	⌘ Late UE	Date:	⌘ 21/05/2003
Category:	⌘ F	Release:	⌘ Rel-5
	Use <u>one</u> of the following categories: F (correction) A (corresponds to a correction in an earlier release) B (addition of feature), C (functional modification of feature) D (editorial modification) Detailed explanations of the above categories can be found in 3GPP TR 21.900 .		Use <u>one</u> of the following releases: 2 (GSM Phase 2) R96 (Release 1996) R97 (Release 1997) R98 (Release 1998) R99 (Release 1999) Rel-4 (Release 4) Rel-5 (Release 5) Rel-6 (Release 6)

Reason for change:	⌘ In SA2#31 the signaling principles for the "Provision of UE Specific Behaviour Information to Network Entities" were agreed in TS 23.195 v 1.1.0. Regarding handover and relocation procedures it was agreed that: - UESBI-Iu shall be sent from anchor to target MSC in inter-MSC handover and relocation.
Summary of change:	⌘ UESBI parameter containing IMEISV is added to MAP Prepare Handover operation invoke when BSSAP is used as the access network protocol.
Consequences if not approved:	⌘ Misalignment with stage 2.

Clauses affected:	⌘ 7.6, 8.4.1, 17.7						
Other specs affected:	<table border="1" style="display: inline-table; border-collapse: collapse;"> <tr> <td style="width: 20px; text-align: center;">Y</td> <td style="width: 20px; text-align: center;">N</td> </tr> <tr> <td style="text-align: center;">X</td> <td style="text-align: center;"></td> </tr> </table> Other core specifications	Y	N	X		⌘ 23.009 CR 097, 29.010 CR 089, 25.413 CR ???	
Y	N						
X							
	<table border="1" style="display: inline-table; border-collapse: collapse;"> <tr> <td style="width: 20px; text-align: center;">X</td> <td style="width: 20px; text-align: center;">X</td> </tr> <tr> <td style="text-align: center;"></td> <td style="text-align: center;">X</td> </tr> </table> Test specifications O&M Specifications	X	X		X		
X	X						
	X						
Other comments:	⌘						

How to create CRs using this form:

Comprehensive information and tips about how to create CRs can be found at <http://www.3gpp.org/specs/CR.htm>. Below is a brief summary:

- 1) Fill out the above form. The symbols above marked ⌘ contain pop-up help information about the field that they are closest to.
- 2) Obtain the latest version for the release of the specification to which the change is proposed. Use the MS Word "revision marks" feature (also known as "track changes") when making the changes. All 3GPP specifications can be downloaded from the 3GPP server under <ftp://ftp.3gpp.org/specs/> For the latest version, look for the directory name with the latest date e.g. 2001-03 contains the specifications resulting from the March 2001 TSG meetings.
- 3) With "track changes" disabled, paste the entire CR form (use CTRL-A to select it) into the specification just in front of the clause containing the first piece of changed text. Delete those parts of the specification which are not relevant to the change request.

7.6 Definition of parameters

Following is an alphabetic list of parameters used in the common MAP-services in clause 7.3:

Application context name	7.3.1	Refuse reason	7.3.1
Destination address	7.3.1	Release method	7.3.2
Destination reference	7.3.1	Responding address	7.3.1
Diagnostic information	7.3.4	Result	7.3.1
Originating address	7.3.1	Source	7.3.5
Originating reference	7.3.1	Specific information	7.3.1/7.3.2/7.3.4
Problem diagnostic	7.3.6	User reason	7.3.4
Provider reason	7.3.5		

Following is an alphabetic list of parameters contained in this clause:

Absent Subscriber Diagnostic SM	7.6.8.9	Location Information	7.6.2.30
Access connection status	7.6.9.3	Location Information for GPRS	7.6.2.30a
Access signalling information	7.6.9.5	Location update type	7.6.9.6
Additional Absent Subscriber Diagnostic SM	7.6.8.12	Long Forwarded-to Number	7.6.2.22A
Additional Location Estimate	7.6.11.21	Long FTN Supported	7.6.2.22B
Additional number	7.6.2.46	Lower Layer Compatibility	7.6.3.42
Additional signal info	7.6.9.10	LSA Information	7.6.3.56
Additional SM Delivery Outcome	7.6.8.11	LSA Information Withdraw	7.6.3.58
Age Indicator	7.6.3.72	MC Information	7.6.4.48
Alert Reason	7.6.8.8	MC Subscription Data	7.6.4.47
Alert Reason Indicator	7.6.8.10	Mobile Not Reachable Reason	7.6.3.51
Alerting Pattern	7.6.3.44	Modification request for CSI	7.6.3.81
All GPRS Data	7.6.3.53	Modification request for SS Information	7.6.3.82
All Information Sent	7.6.1.5	More Messages To Send	7.6.8.7
AN-apdu	7.6.9.1	MS ISDN	7.6.2.17
APN	7.6.2.42	MSC number	7.6.2.11
Authentication set list	7.6.7.1	MSISdn-Alert	7.6.2.29
B-subscriber Address	7.6.2.36	Multicall Bearer Information	7.6.2.52
B subscriber Number	7.6.2.48	Multiple Bearer Requested	7.6.2.53
B subscriber subaddress	7.6.2.49	Multiple Bearer Not Supported	7.6.2.54
Basic Service Group	7.6.4.40	MWD status	7.6.8.3
Bearer service	7.6.4.38	NbrUser	7.6.4.45
BSSMAP Service Handover	7.6.6.5	Network Access Mode	7.6.3.50
BSSMAP Service Handover List	7.6.6.5A	Network node number	7.6.2.43
Call Barring Data	7.6.3.83	Network resources	7.6.10.1
Call barring feature	7.6.4.19	Network signal information	7.6.9.8
Call barring information	7.6.4.18	New password	7.6.4.20
Call Direction	7.6.5.8	No reply condition timer	7.6.4.7
Call Forwarding Data	7.6.3.84	North American Equal Access	7.6.2.34
Call Info	7.6.9.9	preferred Carrier Id	
Call reference	7.6.5.1	Number Portability Status	7.6.5.14
Call Termination Indicator	7.6.3.67	ODB Data	7.6.3.85
Called number	7.6.2.24	ODB General Data	7.6.3.9
Calling number	7.6.2.25	ODB HPLMN Specific Data	7.6.3.10
CAMEL Subscription Info	7.6.3.78	OMC Id	7.6.2.18
CAMEL Subscription Info Withdraw	7.6.3.38	Originally dialled number	7.6.2.26
Cancellation Type	7.6.3.52	Originating entity number	7.6.2.10
Category	7.6.3.1	Override Category	7.6.4.4
CCBS Feature	7.6.5.8	P-TMSI	7.6.2.47
CCBS Request State	7.6.4.49	PDP-Address	7.6.2.45
Channel Type	7.6.5.9	PDP-Context identifier	7.6.3.55
Chosen Channel	7.6.5.10	PDP-Type	7.6.2.44
Chosen Radio Resource Information	7.6.6.10B	Pre-paging supported	7.6.5.15
Ciphering mode	7.6.7.7	Previous location area Id	7.6.2.4
Cksn	7.6.7.5	Protocol Id	7.6.9.7

CLI Restriction	7.6.4.5	Provider error	7.6.1.3
CM service type	7.6.9.2	PS LCS Not Supported by UE	7.6.11.10
Complete Data List Included	7.6.3.54	QoS-Subscribed	7.6.3.47
CS Allocation Retention priority	7.6.3.87	Radio Resource Information	7.6.6.10
CS LCS Not Supported by UE	7.6.11.9	Radio Resource List	7.6.6.10A
CUG feature	7.6.3.26	RANAP Service Handover	7.6.6.6
CUG index	7.6.3.25	Rand	7.6.7.2
CUG info	7.6.3.22	LCS-Reference Number	7.6.11.23
CUG interlock	7.6.3.24	Regional Subscription Data	7.6.3.11
CUG Outgoing Access indicator	7.6.3.8	Regional Subscription Response	7.6.3.12
CUG subscription	7.6.3.23	Relocation Number List	7.6.2.19A
CUG Subscription Flag	7.6.3.37	Requested Info	7.6.3.31
Current location area Id	7.6.2.6	Requested Subscription Info	7.6.3.86
Current password	7.6.4.21	Roaming number	7.6.2.19
Deferred MT-LR Data	7.6.11.3	Roaming Restricted In SGSN Due To	7.6.3.49
		Unsupported Feature	
Deferred MT-LR Response Indicator	7.6.11.2	Roaming Restriction Due To	7.6.3.13
		Unsupported Feature	
eMLPP Information	7.6.4.41	Current Security Context	7.6.7.8
Encryption Information	7.6.6.9	Selected RAB ID	7.6.2.56
Equipment status	7.6.3.2	Service centre address	7.6.2.27
Extensible Basic Service Group	7.6.3.5	Serving Cell Id	7.6.2.37
Extensible Bearer service	7.6.3.3	SGSN address	7.6.2.39
Extensible Call barring feature	7.6.3.21	SGSN CAMEL Subscription Info	7.6.3.75
Extensible Call barring information	7.6.3.20	SGSN number	7.6.2.38
Extensible Call barring information for CSE	7.6.3.79	SIWF Number	7.6.2.35
Extensible Forwarding feature	7.6.3.16	SoLSA Support Indicator	7.6.3.57
Extensible Forwarding info	7.6.3.15	SM Delivery Outcome	7.6.8.6
Extensible Forwarding information for CSE	7.6.3.80	SM-RP-DA	7.6.8.1
Extensible Forwarding Options	7.6.3.18	SM-RP-MTI	7.6.8.16
Extensible No reply condition timer	7.6.3.19	SM-RP-OA	7.6.8.2
Extensible QoS-Subscribed	7.6.3.74	SM-RP-PRI	7.6.8.5
Extensible SS-Data	7.6.3.29	SM-RP-SMEA	7.6.8.17
Extensible SS-Info	7.6.3.14	SM-RP-UI	7.6.8.4
Extensible SS-Status	7.6.3.17	Sres	7.6.7.3
Extensible Teleservice	7.6.3.4	SS-Code	7.6.4.1
External Signal Information	7.6.9.4	SS-Data	7.6.4.3
Failure Cause	7.6.7.9	SS-Event	7.6.4.42
Forwarded-to number	7.6.2.22	SS-Event-Data	7.6.4.43
Forwarded-to subaddress	7.6.2.23	SS-Info	7.6.4.24
Forwarding feature	7.6.4.16	SS-Status	7.6.4.2
Forwarding information	7.6.4.15	Stored location area Id	7.6.2.5
Forwarding Options	7.6.4.6	Subscriber State	7.6.3.30
GERAN Classmark	7.6.6.4	Subscriber Status	7.6.3.7
GGSN address	7.6.2.40	Super-Charger Supported in HLR	7.6.3.70
GGSN number	7.6.2.41	Super-Charger Supported in Serving Network Entity	7.6.3.71
GMSC CAMEL Subscription Info	7.6.3.34	Offered Camel4 CSIs	7.6.3.36D
GPRS enhancements support indicator	7.6.3.73	Offered Camel4 CSIs in GMSC	7.6.3.36E
GPRS Node Indicator	7.6.8.14	Offered Camel4 CSIs in VMSC	7.6.3.36F
GPRS Subscription Data	7.6.3.46	Offered Camel4 CSIs in VLR	7.6.3.36B
GPRS Subscription Data Withdraw	7.6.3.45	Offered Camel4 CSIs in SGSN	7.6.3.36C
GPRS Support Indicator	7.6.8.15	Offered Camel4 Functionalities	7.6.3.36G
Group Id	7.6.2.33	Supported CAMEL Phases in VLR	7.6.3.36
GSM bearer capability	7.6.3.6	Supported CAMEL Phases in SGSN	7.6.3.36A
gsmSCF Address	7.6.2.58	Supported GAD Shapes	7.6.11.20
gsmSCF Initiated Call	7.6.3.c	Supported LCS Capability Sets	7.6.11.17
Guidance information	7.6.4.22	Suppress Incoming Call Barring	7.6.3.b
Handover number	7.6.2.21	Suppress T-CSI	7.6.3.33
High Layer Compatibility	7.6.3.43	Suppress VT-CSI	7.6.3.a
HLR Id	7.6.2.15	Suppression of Announcement	7.6.3.32
HLR number	7.6.2.13	Target cell Id	7.6.2.8
HO-Number Not Required	7.6.6.7	Target location area Id	7.6.2.7
IMEI	7.6.2.3	Target RNC Id	7.6.2.8A
IMSI	7.6.2.1	Target MSC number	7.6.2.12
Integrity Protection Information	7.6.6.8	Teleservice	7.6.4.39
Inter CUG options	7.6.3.27	TMSI	7.6.2.2

Intra CUG restrictions	7.6.3.28	Trace reference	7.6.10.2
Invoke Id	7.6.1.1	Trace type	7.6.10.3
		UESBI	7.6.6.X
ISDN Bearer Capability	7.6.3.41	User error	7.6.1.4
IST Alert Timer	7.6.3.66	USSD Data Coding Scheme	7.6.4.36
IST Information Withdrawn	7.6.3.68	USSD String	7.6.4.37
IST Support Indicator	7.6.3.69	UU Data	7.6.5.12
LCS Codeword	7.6.11.18	UUS CF Interaction	7.6.5.13
LCS Information	7.6.3.60	VBS Data	7.6.3.40
LCS Service Type Id	7.6.11.15	VGCS Data	7.6.3.39
Kc	7.6.7.4	VLR CAMEL Subscription Info	7.6.3.35
Linked Id	7.6.1.2	VLR number	7.6.2.14
LMSI	7.6.2.16	VPLMN address allowed	7.6.3.48
		Zone Code	7.6.2.28

**** NEXT MODIFIED SECTION ****

[7.6.6.X UESBI](#)

[This parameter refers to the UESBI \(UE Specific Behaviour Information\) information element defined in 3GPP TS 25.413.](#)

**** NEXT MODIFIED SECTION ****

8.4.1 MAP_PREPARE_HANOVER service

8.4.1.1 Definition

This service is used between MSC-A and MSC-B (E-interface) when a call is to be handed over or relocated from MSC-A to MSC-B.

The MAP_PREPARE_HANOVER service is a confirmed service using the primitives from table 8.4/1.

8.4.1.2 Service primitives

Table 8.4/1: MAP_PREPARE_HANOVER

Parameter name	Request	Indication	Response	Confirm
Invoke Id	M	M(=)	M(=)	M(=)
Target Cell Id	C	C(=)		
Target RNC Id	C	C(=)		
HO-NumberNotRequired	C	C(=)		
IMSI	C	C(=)		
Integrity Protection Information	C	C(=)		
Encryption Information	C	C(=)		
Radio Resource Information	C	C(=)		
AN-APDU	C	C(=)	C	C(=)
Allowed GSM Algorithms	C	C(=)		
Allowed UMTS Algorithms	C	C(=)		
Radio Resource List	C	C(=)		

RAB ID	C	C(=)		
GERAN Classmark	C	C(=)		
BSSMAP Service Handover	C	C(=)		
BSSMAP Service Handover List	C	C(=)		
RANAP Service Handover	C	C(=)		
Currently Used Codec	C	C(=)		
Available Codecs List	C	C(=)		
RAB Configuration Indicator	C	C(=)		
ASCI Call Reference	C	C(=)		
<u>UESBI</u>	<u>C</u>	<u>C(=)</u>		
Handover Number			C	C(=)
Relocation Number List			C	C(=)
Multicall Bearer Information			C	C(=)
Multiple Bearer Requested	C	C(=)		
Multiple Bearer Not Supported			C	C(=)
Selected UMTS Algorithms			C	C(=)
Chosen Radio Resource Information			C	C(=)
Selected Codec			C	C(=)
User error			C	C(=)
Provider error				O

8.4.1.3 Parameter use

Invoke Id

For definition of this parameter see clause 7.6.1.

Target Cell Id

For definition of this parameter see clause 7.6.2. This parameter is only included if the service is not in an ongoing transaction. This parameter shall also be excluded if the service is a part of the Inter-MSC SRNS Relocation procedure or the inter-system handover GSM to UMTS procedure described in 3GPP TS 23.009.

Target RNC Id

For definition of this parameter see clause 7.6.2. This parameter shall be included if the service is a part of the Inter-MSC SRNS Relocation procedure or the inter-system handover GSM to UMTS procedure described in 3GPP TS 23.009.

HO-Number Not Required

For definition of this parameter see clause 7.6.6.

IMSI

For definition of this parameter see clause 7.6.2. This UMTS parameter shall be included if:

- available and
- if the access network protocol is BSSAP and
- there is an indication that the MS also supports UMTS.

Integrity Protection Information

For definition of this parameter see clause 7.6.6. This UMTS parameter shall be included if available and if the access network protocol is BSSAP.

Encryption Information

For definition of this parameter see clause 7.6.6. This UMTS parameter shall be included if available and if the access network protocol is BSSAP.

Radio Resource Information

For definition of this parameter see clause 7.6.6. This GSM parameter shall be included if the access network protocol is RANAP and there is an indication that the UE also supports GSM. If the parameter Radio Resource List is sent, the parameter Radio Resource Information shall not be sent.

AN-APDU

For definition of this parameter see clause 7.6.9.

Allowed GSM Algorithms

For definition of this parameter see clause 7.6.6. This parameter includes allowed GSM algorithms. This GSM parameter shall be included if:

- the service is a part of the Inter-MSC SRNS Relocation procedure and
- Ciphering or Security Mode Setting procedure has been performed and
- there is an indication that the UE also supports GSM.

Allowed UMTS Algorithms

For definition of this parameter see clause 7.6.6. This UMTS parameter shall be included if all of the following conditions apply:

- access network protocol is BSSAP and
- Integrity Protection Information and Encryption Information are not available and

Ciphering or Security Mode Setting procedure has been performed.

Radio Resource List

For definition of this parameter see clause 7.6.6. This parameter shall be included if the access network protocol is RANAP and there is an indication that the UE also supports GSM. This parameter shall be sent when MSC-A requests multiple bearers to MSC-B. If the parameter Radio Resource Information is sent, the parameter Radio Resource List shall not be sent.

RAB ID

For definition of this parameter see subclause 7.6.2. This parameter shall be included when MSC-A supports multiple bearers and access network protocol is BSSAP and the RAB ID has a value other than 1.

GERAN Classmark

For definition of this parameter see subclause 7.6.6. This parameter shall be included if available.

BSSMAP Service Handover

For definition of this parameter see clause 7.6.6. It shall be present if it is available and the access network protocol is RANAP. If the parameter BSSMAP Service Handover List is sent, the parameter BSSMAP Service Handover shall not be sent.

BSSMAP Service Handover List

For definition of this parameter see clause 7.6.6. It shall be present if it is available and the access network protocol is RANAP. This parameter shall be sent when MSC-A requests multiple bearers to MSC-B. If the parameter BSSMAP Service Handover is sent, the parameter BSSMAP Service Handover List shall not be sent.

RANAP Service Handover

For definition of this parameter see clause 7.6.6. It shall be present if it is available and the access network protocol is BSSAP.

Currently Used Codec

For definition of this parameter see subclause 7.6.6. This parameter shall be included if the call is a speech call. This parameter shall not be included if Available Codecs List is not included.

Available Codecs List

For definition of this parameter see subclause 7.6.6. This parameter shall be included if the call is a speech call.

RAB Configuration Indicator

For definition of this parameter see subclause 7.6.6. This parameter may be included if the call is a speech call and MSC-A knows by means of configuration information that MSC-B supports the use of Available Codecs List parameter. This parameter shall not be included if Available Codecs List is not included.

ASCI Call Reference

This parameter contains either the broadcast call reference or group call reference. It shall be included if a subscriber is undergoing Signalling Only handover during a VGCS or VBS call, where MSC-B already has a Bearer established, so that MSC-B can determine the Group or Broadcast Call to which it shall attach the subscriber, see 3GPP TS 48.008 [49].

UESBI

[For definition of this parameter see clause 7.6.6. It shall be present if it is available and the access network protocol is BSSAP.](#)

Handover Number

For definition of this parameter see clause 7.6.2. This parameter shall be returned at handover, unless the parameter HO-NumberNotRequired is sent. If the parameter Handover Number is returned, the parameter Relocation Number List shall not be returned.

Relocation Number List

For definition of this parameter see clause 7.6.2. This parameter shall be returned at relocation, unless the parameter HO-NumberNotRequired is sent. If the parameter Relocation Number List is returned, the parameter Handover Number shall not be returned.

Multicall Bearer Information

For a definition of this parameter see clause 7.6.2. This parameter shall be returned at relocation in the case that MSC-B supports multiple bearers.

Multiple Bearer Requested

For a definition of this parameter see clause 7.6.2. This parameter shall be sent when MSC-A requests multiple bearers to MSC-B.

Multiple Bearer Not Supported

For a definition of this parameter see clause 7.6.2. This parameter shall be returned at relocation when MSC-B receives Multiple Bearer Requested parameter and MSC-B does not support multiple bearers.

Selected UMTS Algorithms

For definition of this parameter see clause 7.6.6. This parameters includes the UMTS integrity and optionally encryption algorithms selected by RNC under the control of MSC-B. This UMTS parameter shall be included if the service is a part of the inter MSC inter system handover from GSM to UMTS.

Chosen Radio Resource Information

For definition of this parameter see clause 7.6.6. This parameter shall be returned at relocation if the encapsulated PDU is RANAP RAB Assignment Response and MS is in GSM access.

Selected Codec

For definition of this parameter see subclause 7.6.6. This parameter shall be included always if MSC-B supports the selection of codec based on Available Codecs List, even if Selected Codec is equal to the Currently Used Codec received in the service request. This parameter shall not be included if Available Codecs List was not received in the service request.

User error

For definition of this parameter see clause 7.6.1. The following errors defined in clause 7.6.1 may be used, depending on the nature of the fault:

- No handover number available.
- Target cell outside group call area;
- System failure.
- Unexpected data value.
- Data Missing.

Provider error

See definition of provider errors in clause 7.6.1.

**** NEXT MODIFIED SECTION ****

17.7 MAP constants and data types

17.7.1 Mobile Service data types

...

PrepareHO-Arg ::= [3] SEQUENCE {		
targetCellId	[0] GlobalCellId	OPTIONAL,
ho-NumberNotRequired	NULL	OPTIONAL,
targetRNCId	[1] RNCId	OPTIONAL,
an-APDU	[2] AccessNetworkSignalInfo	OPTIONAL,
multipleBearerRequested	[3] NULL	OPTIONAL,
imsi	[4] IMSI	OPTIONAL,
integrityProtectionInfo	[5] IntegrityProtectionInformation	OPTIONAL,
encryptionInfo	[6] EncryptionInformation	OPTIONAL,
radioResourceInformation	[7] RadioResourceInformation	OPTIONAL,
allowedGSM-Algorithms	[9] AllowedGSM-Algorithms	OPTIONAL,
allowedUMTS-Algorithms	[10] AllowedUMTS-Algorithms	OPTIONAL,
radioResourceList	[11] RadioResourceList	OPTIONAL,
extensionContainer	[8] ExtensionContainer	OPTIONAL,
...		
rab-Id	[12] RAB-Id	OPTIONAL,
bssmap-ServiceHandover	[13] BSSMAP-ServiceHandover	OPTIONAL,
ranap-ServiceHandover	[14] RANAP-ServiceHandover	OPTIONAL,
bssmap-ServiceHandoverList	[15] BSSMAP-ServiceHandoverList	OPTIONAL,
asciiCallReference	[20] ASCII-CallReference	OPTIONAL,
geran-classmark	[16] GERAN-Classmark	OPTIONAL,
currentlyUsedCodec	[17] Codec	OPTIONAL,
availableCodecsList	[18] AvailableCodecsList	OPTIONAL,
rab-ConfigurationIndicator	[19] NULL	OPTIONAL,
uesbi	[xx] UESBI	OPTIONAL
}		

```
UESBI ::= OCTET STRING (SIZE (8))
-- Octets are coded according the UESBI information element in 3GPP TS 25.413.
```

```
BSSMAP-ServiceHandoverList ::= SEQUENCE SIZE (1.. maxNumOfServiceHandovers) OF
    BSSMAP-ServiceHandoverInfo
```

```
BSSMAP-ServiceHandoverInfo ::= SEQUENCE {
    bssmap-ServiceHandover    BSSMAP-ServiceHandover,
    rab-Id                    RAB-Id,
    -- RAB Identity is needed to relate the service handovers with the radio access bearers.
    ...}
```

```
maxNumOfServiceHandovers INTEGER ::= 7
```

```
BSSMAP-ServiceHandover ::= OCTET STRING (SIZE (1))
-- Octets are coded according the Service Handover information element in
-- 3GPP TS 48.008.
```

```
RANAP-ServiceHandover ::= OCTET STRING (SIZE (1))
-- Octet contains a complete Service-Handover data type
-- as defined in 3GPP TS 25.413, encoded according to the encoding scheme
-- mandated by 3GPP TS 25.413
-- Padding bits are included in the least significant bits.
```

...

CHANGE REQUEST

⌘ **29.002 CR 628** ⌘ rev **1** ⌘ Current version: **6.1.0** ⌘

For **HELP** on using this form, see bottom of this page or look at the pop-up text over the ⌘ symbols.

Proposed change affects: UICC apps ME Radio Access Network Core Network

Title:	⌘ Transfer of IMEISV at handover		
Source:	⌘ CN4		
Work item code:	⌘ Late UE	Date:	⌘ 21/05/2003
Category:	⌘ A	Release:	⌘ Rel-6
	Use <u>one</u> of the following categories: F (correction) A (corresponds to a correction in an earlier release) B (addition of feature), C (functional modification of feature) D (editorial modification) Detailed explanations of the above categories can be found in 3GPP TR 21.900 .		Use <u>one</u> of the following releases: 2 (GSM Phase 2) R96 (Release 1996) R97 (Release 1997) R98 (Release 1998) R99 (Release 1999) Rel-4 (Release 4) Rel-5 (Release 5) Rel-6 (Release 6)

Reason for change:	⌘ In SA2#31 the signaling principles for the "Provision of UE Specific Behaviour Information to Network Entities" were agreed in TS 23.195 v 1.1.0. Regarding handover and relocation procedures it was agreed that: - UESBI-lu shall be sent from anchor to target MSC in inter-MSC handover and relocation.
Summary of change:	⌘ UESBI parameter containing IMEISV is added to MAP Prepare Handover operation invoke when BSSAP is used as the access network protocol.
Consequences if not approved:	⌘ Misalignment with stage 2.

Clauses affected:	⌘ 7.6, 8.4.1, 17.7										
Other specs affected:	<table border="1" style="display: inline-table; border-collapse: collapse;"> <tr> <td style="width: 20px; text-align: center;">Y</td> <td style="width: 20px; text-align: center;">N</td> </tr> <tr> <td style="text-align: center;">X</td> <td style="text-align: center;"></td> </tr> <tr> <td style="text-align: center;"></td> <td style="text-align: center;">X</td> </tr> <tr> <td style="text-align: center;"></td> <td style="text-align: center;">X</td> </tr> </table> Other core specifications	Y	N	X			X		X	⌘ 23.009 CR 097, 29.010 CR 089, 25.413 CR ???	
Y	N										
X											
	X										
	X										
Other comments:	⌘										

How to create CRs using this form:

Comprehensive information and tips about how to create CRs can be found at <http://www.3gpp.org/specs/CR.htm>. Below is a brief summary:

- 1) Fill out the above form. The symbols above marked ⌘ contain pop-up help information about the field that they are closest to.
- 2) Obtain the latest version for the release of the specification to which the change is proposed. Use the MS Word "revision marks" feature (also known as "track changes") when making the changes. All 3GPP specifications can be downloaded from the 3GPP server under <ftp://ftp.3gpp.org/specs/> For the latest version, look for the directory name with the latest date e.g. 2001-03 contains the specifications resulting from the March 2001 TSG meetings.
- 3) With "track changes" disabled, paste the entire CR form (use CTRL-A to select it) into the specification just in front of the clause containing the first piece of changed text. Delete those parts of the specification which are not relevant to the change request.

7.6 Definition of parameters

Following is an alphabetic list of parameters used in the common MAP-services in clause 7.3:

Application context name	7.3.1	Refuse reason	7.3.1
Destination address	7.3.1	Release method	7.3.2
Destination reference	7.3.1	Responding address	7.3.1
Diagnostic information	7.3.4	Result	7.3.1
Originating address	7.3.1	Source	7.3.5
Originating reference	7.3.1	Specific information	7.3.1/7.3.2/7.3.4
Problem diagnostic	7.3.6	User reason	7.3.4
Provider reason	7.3.5		

Following is an alphabetic list of parameters contained in this clause:

Absent Subscriber Diagnostic SM	7.6.8.9	Location Information for GPRS	7.6.2.30a
Access connection status	7.6.9.3	Location update type	7.6.9.6
Access signalling information	7.6.9.5	Long Forwarded-to Number	7.6.2.22A
Additional Absent Subscriber Diagnostic SM	7.6.8.12	Long FTN Supported	7.6.2.22B
Additional Location Estimate	7.6.11.21	Lower Layer Compatibility	7.6.3.42
Additional number	7.6.2.46	LSA Information	7.6.3.56
Additional signal info	7.6.9.10	LSA Information Withdraw	7.6.3.58
Additional SM Delivery Outcome	7.6.8.11	MC Information	7.6.4.48
Age Indicator	7.6.3.72	MC Subscription Data	7.6.4.47
Alert Reason	7.6.8.8	Mobile Not Reachable Reason	7.6.3.51
Alert Reason Indicator	7.6.8.10	Modification request for CSI	7.6.3.81
Alerting Pattern	7.6.3.44	Modification request for SS Information	7.6.3.82
All GPRS Data	7.6.3.53	More Messages To Send	7.6.8.7
All Information Sent	7.6.1.5	MS ISDN	7.6.2.17
AN-apdu	7.6.9.1	MSC number	7.6.2.11
APN	7.6.2.42	MSISdn-Alert	7.6.2.29
Authentication set list	7.6.7.1	Multicall Bearer Information	7.6.2.52
B-subscriber Address	7.6.2.36	Multiple Bearer Requested	7.6.2.53
B subscriber Number	7.6.2.48	Multiple Bearer Not Supported	7.6.2.54
B subscriber subaddress	7.6.2.49	MWD status	7.6.8.3
Basic Service Group	7.6.4.40	NbrUser	7.6.4.45
Bearer service	7.6.4.38	Network Access Mode	7.6.3.50
BSSMAP Service Handover	7.6.6.5	Network node number	7.6.2.43
BSSMAP Service Handover List	7.6.6.5A	Network resources	7.6.10.1
Call Barring Data	7.6.3.83	Network signal information	7.6.9.8
Call barring feature	7.6.4.19	New password	7.6.4.20
Call barring information	7.6.4.18	No reply condition timer	7.6.4.7
Call barring support indicator	7.6.3.92	North American Equal Accesspreferred Carrier Id	7.6.2.34
Call Direction	7.6.5.8	Number Portability Status	7.6.5.14
Call Forwarding Data	7.6.3.84	ODB Data	7.6.3.85
Call Info	7.6.9.9	ODB General Data	7.6.3.9
Call reference	7.6.5.1	ODB HPLMN Specific Data	7.6.3.10
Call Termination Indicator	7.6.3.67	OMC Id	7.6.2.18
Called number	7.6.2.24	Originally dialled number	7.6.2.26
Calling number	7.6.2.25	Originating entity number	7.6.2.10
CAMEL Subscription Info	7.6.3.78	Override Category	7.6.4.4
CAMEL Subscription Info Withdraw	7.6.3.38	P-TMSI	7.6.2.47
Cancellation Type	7.6.3.52	PDP-Address	7.6.2.45
Category	7.6.3.1	PDP-Context identifier	7.6.3.55
CCBS Feature	7.6.5.8	PDP-Type	7.6.2.44
CCBS Request State	7.6.4.49	Pre-paging supported	7.6.5.15
Channel Type	7.6.5.9	Previous location area Id	7.6.2.4
Chosen Channel	7.6.5.10		

Chosen Radio Resource Information	7.6.6.10B	Protocol Id	7.6.9.7
Ciphering mode	7.6.7.7	Provider error	7.6.1.3
Cksn	7.6.7.5	PS LCS Not Supported by UE	7.6.11.10
CLI Restriction	7.6.4.5	QoS-Subscribed	7.6.3.47
CM service type	7.6.9.2	Radio Resource Information	7.6.6.10
Complete Data List Included	7.6.3.54	Radio Resource List	7.6.6.10A
CS Allocation Retention priority	7.6.3.87	RANAP Service Handover	7.6.6.6
CS LCS Not Supported by UE	7.6.11.9	Rand	7.6.7.2
CUG feature	7.6.3.26	LCS-Reference Number	7.6.11.23
CUG index	7.6.3.25	Regional Subscription Data	7.6.3.11
CUG info	7.6.3.22	Regional Subscription Response	7.6.3.12
CUG interlock	7.6.3.24	Relocation Number List	7.6.2.19A
CUG Outgoing Access indicator	7.6.3.8	Requested Info	7.6.3.31
CUG subscription	7.6.3.23	Requested Subscription Info	7.6.3.86
CUG Subscription Flag	7.6.3.37	Roaming number	7.6.2.19
Current location area Id	7.6.2.6	Roaming Restricted In SGSN Due To Unsupported Feature	7.6.3.49
Current password	7.6.4.21	Roaming Restriction Due To Unsupported Feature	7.6.3.13
Deferred MT-LR Data	7.6.11.3	Current Security Context	7.6.7.8
Deferred MT-LR Response Indicator	7.6.11.2	Selected RAB ID	7.6.2.56
eMLPP Information	7.6.4.41	Service centre address	7.6.2.27
Encryption Information	7.6.6.9	Serving Cell Id	7.6.2.37
Equipment status	7.6.3.2	SGSN address	7.6.2.39
Extensible Basic Service Group	7.6.3.5	SGSN CAMEL Subscription Info	7.6.3.75
Extensible Bearer service	7.6.3.3	SGSN number	7.6.2.38
Extensible Call barring feature	7.6.3.21	SIWF Number	7.6.2.35
Extensible Call barring information	7.6.3.20	SoLSA Support Indicator	7.6.3.57
Extensible Call barring information for CSE	7.6.3.79	SM Delivery Outcome	7.6.8.6
Extensible Forwarding feature	7.6.3.16	SM-RP-DA	7.6.8.1
Extensible Forwarding info	7.6.3.15	SM-RP-MTI	7.6.8.16
Extensible Forwarding information for CSE	7.6.3.80	SM-RP-OA	7.6.8.2
Extensible Forwarding Options	7.6.3.18	SM-RP-PRI	7.6.8.5
Extensible No reply condition timer	7.6.3.19	SM-RP-SMEA	7.6.8.17
Extensible QoS-Subscribed	7.6.3.74	SM-RP-UI	7.6.8.4
Extensible SS-Data	7.6.3.29	Sres	7.6.7.3
Extensible SS-Info	7.6.3.14	SS-Code	7.6.4.1
Extensible SS-Status	7.6.3.17	SS-Data	7.6.4.3
Extensible Teleservice	7.6.3.4	SS-Event	7.6.4.42
External Signal Information	7.6.9.4	SS-Event-Data	7.6.4.43
Failure Cause	7.6.7.9	SS-Info	7.6.4.24
Forwarded-to number	7.6.2.22	SS-Status	7.6.4.2
Forwarded-to subaddress	7.6.2.23	Stored location area Id	7.6.2.5
Forwarding feature	7.6.4.16	Subscriber State	7.6.3.30
Forwarding information	7.6.4.15	Subscriber Status	7.6.3.7
Forwarding Options	7.6.4.6	Super-Charger Supported in HLR	7.6.3.70
GERAN Classmark	7.6.6.4	Super-Charger Supported in Serving Network Entity	7.6.3.71
GGSN address	7.6.2.40	Offered Camel4 CSIs	7.6.3.36D
GGSN number	7.6.2.41	Offered Camel4 CSIs in GMSC	7.6.3.36E
GMSC CAMEL Subscription Info	7.6.3.34	Offered Camel4 CSIs in VMSC	7.6.3.36F
GPRS enhancements support indicator	7.6.3.73	Offered Camel4 CSIs in VLR	7.6.3.36B
GPRS Node Indicator	7.6.8.14	Offered Camel4 CSIs in SGSN	7.6.3.36C
GPRS Subscription Data	7.6.3.46	Offered Camel4 Functionalities	7.6.3.36G
GPRS Subscription Data Withdraw	7.6.3.45	Supported CAMEL Phases in VLR	7.6.3.36
GPRS Support Indicator	7.6.8.15	Supported CAMEL Phases in SGSN	7.6.3.36A
Group Id	7.6.2.33	Supported GAD Shapes	7.6.11.20
GSM bearer capability	7.6.3.6	Supported LCS Capability Sets	7.6.11.17
gsmSCF Address	7.6.2.58	Suppress Incoming Call Barring	7.6.3.b
gsmSCF Initiated Call	7.6.3.c	Suppress T-CSI	7.6.3.33
Guidance information	7.6.4.22	Suppress VT-CSI	7.6.3.a
Handover number	7.6.2.21	Suppression of Announcement	7.6.3.32
High Layer Compatibility	7.6.3.43	Target cell Id	7.6.2.8
HLR Id	7.6.2.15	Target location area Id	7.6.2.7
HLR number	7.6.2.13	Target RNC Id	7.6.2.8A
HO-Number Not Required	7.6.6.7	Target MSC number	7.6.2.12
IMEI	7.6.2.3		

IMSI	7.6.2.1	Teleservice	7.6.4.39
Integrity Protection Information	7.6.6.8	TMSI	7.6.2.2
Inter CUG options	7.6.3.27	Trace reference	7.6.10.2
Intra CUG restrictions	7.6.3.28	Trace type	7.6.10.3
		UESBI	7.6.6.X
Invoke Id	7.6.1.1	User error	7.6.1.4
ISDN Bearer Capability	7.6.3.41	USSD Data Coding Scheme	7.6.4.36
IST Alert Timer	7.6.3.66	USSD String	7.6.4.37
IST Information Withdrawn	7.6.3.68	UU Data	7.6.5.12
IST Support Indicator	7.6.3.69	UUS CF Interaction	7.6.5.13
LCS Codeword	7.6.11.18	VBS Data	7.6.3.40
LCS Information	7.6.3.60	VGCS Data	7.6.3.39
LCS Service Type Id	7.6.11.15	VLR CAMEL Subscription Info	7.6.3.35
Kc	7.6.7.4	VLR number	7.6.2.14
Linked Id	7.6.1.2	VPLMN address allowed	7.6.3.48
LMSI	7.6.2.16	Zone Code	7.6.2.28
Location Information	7.6.2.30		

**** NEXT MODIFIED SECTION ****

[7.6.6.X UESBI](#)

[This parameter refers to the UESBI \(UE Specific Behaviour Information\) information element defined in 3GPP TS 25.413.](#)

**** NEXT MODIFIED SECTION ****

8.4.1 MAP_PREPARE_HANOVER service

8.4.1.1 Definition

This service is used between MSC-A and MSC-B (E-interface) when a call is to be handed over or relocated from MSC-A to MSC-B.

The MAP_PREPARE_HANOVER service is a confirmed service using the primitives from table 8.4/1.

8.4.1.2 Service primitives

Table 8.4/1: MAP_PREPARE_HANOVER

Parameter name	Request	Indication	Response	Confirm
Invoke Id	M	M(=)	M(=)	M(=)
Target Cell Id	C	C(=)		
Target RNC Id	C	C(=)		
HO-NumberNotRequired	C	C(=)		
IMSI	C	C(=)		
Integrity Protection Information	C	C(=)		
Encryption Information	C	C(=)		
Radio Resource Information	C	C(=)		
AN-APDU	C	C(=)	C	C(=)
Allowed GSM Algorithms	C	C(=)		
Allowed UMTS Algorithms	C	C(=)		

Radio Resource List	C	C(=)		
RAB ID	C	C(=)		
GERAN Classmark	C	C(=)		
BSSMAP Service Handover	C	C(=)		
BSSMAP Service Handover List	C	C(=)		
RANAP Service Handover	C	C(=)		
Currently Used Codec	C	C(=)		
Available Codecs List	C	C(=)		
RAB Configuration Indicator	C	C(=)		
ASCI Call Reference	C	C(=)		
<u>UESBI</u>	<u>C</u>	<u>C(=)</u>		
Handover Number			C	C(=)
Relocation Number List			C	C(=)
Multicall Bearer Information			C	C(=)
Multiple Bearer Requested	C	C(=)		
Multiple Bearer Not Supported			C	C(=)
Selected UMTS Algorithms			C	C(=)
Chosen Radio Resource Information			C	C(=)
Selected Codec			C	C(=)
User error			C	C(=)
Provider error				O

8.4.1.3 Parameter use

Invoke Id

For definition of this parameter see clause 7.6.1.

Target Cell Id

For definition of this parameter see clause 7.6.2. This parameter is only included if the service is not in an ongoing transaction. This parameter shall also be excluded if the service is a part of the Inter-MSC SRNS Relocation procedure or the inter-system handover GSM to UMTS procedure described in 3GPP TS 23.009.

Target RNC Id

For definition of this parameter see clause 7.6.2. This parameter shall be included if the service is a part of the Inter-MSC SRNS Relocation procedure or the inter-system handover GSM to UMTS procedure described in 3GPP TS 23.009.

HO-Number Not Required

For definition of this parameter see clause 7.6.6.

IMSI

For definition of this parameter see clause 7.6.2. This UMTS parameter shall be included if:

- available and
- if the access network protocol is BSSAP and
- there is an indication that the MS also supports UMTS.

Integrity Protection Information

For definition of this parameter see clause 7.6.6. This UMTS parameter shall be included if available and if the access network protocol is BSSAP.

Encryption Information

For definition of this parameter see clause 7.6.6. This UMTS parameter shall be included if available and if the access network protocol is BSSAP.

Radio Resource Information

For definition of this parameter see clause 7.6.6. This GSM parameter shall be included if the access network protocol is RANAP and there is an indication that the UE also supports GSM. If the parameter Radio Resource List is sent, the parameter Radio Resource Information shall not be sent.

AN-APDU

For definition of this parameter see clause 7.6.9.

Allowed GSM Algorithms

For definition of this parameter see clause 7.6.6. This parameter includes allowed GSM algorithms. This GSM parameter shall be included if:

- the service is a part of the Inter-MSC SRNS Relocation procedure and
- Ciphering or Security Mode Setting procedure has been performed and
- there is an indication that the UE also supports GSM.

Allowed UMTS Algorithms

For definition of this parameter see clause 7.6.6. This UMTS parameter shall be included if all of the following conditions apply:

- access network protocol is BSSAP and
- Integrity Protection Information and Encryption Information are not available and

Ciphering or Security Mode Setting procedure has been performed.

Radio Resource List

For definition of this parameter see clause 7.6.6. This parameter shall be included if the access network protocol is RANAP and there is an indication that the UE also supports GSM. This parameter shall be sent when MSC-A requests multiple bearers to MSC-B. If the parameter Radio Resource Information is sent, the parameter Radio Resource List shall not be sent.

RAB ID

For definition of this parameter see subclause 7.6.2. This parameter shall be included when MSC-A supports multiple bearers and access network protocol is BSSAP and the RAB ID has a value other than 1.

GERAN Classmark

For definition of this parameter see subclause 7.6.6. This parameter shall be included if available.

BSSMAP Service Handover

For definition of this parameter see clause 7.6.6. It shall be present if it is available and the access network protocol is RANAP. If the parameter BSSMAP Service Handover List is sent, the parameter BSSMAP Service Handover shall not be sent.

BSSMAP Service Handover List

For definition of this parameter see clause 7.6.6. It shall be present if it is available and the access network protocol is RANAP. This parameter shall be sent when MSC-A requests multiple bearers to MSC-B. If the parameter BSSMAP Service Handover is sent, the parameter BSSMAP Service Handover List shall not be sent.

RANAP Service Handover

For definition of this parameter see clause 7.6.6. It shall be present if it is available and the access network protocol is BSSAP.

Currently Used Codec

For definition of this parameter see subclause 7.6.6. This parameter shall be included if the call is a speech call. This parameter shall not be included if Available Codecs List is not included.

Available Codecs List

For definition of this parameter see subclause 7.6.6. This parameter shall be included if the call is a speech call.

RAB Configuration Indicator

For definition of this parameter see subclause 7.6.6. This parameter may be included if the call is a speech call and MSC-A knows by means of configuration information that MSC-B supports the use of Available Codecs List parameter. This parameter shall not be included if Available Codecs List is not included.

ASCI Call Reference

This parameter contains either the broadcast call reference or group call reference. It shall be included if a subscriber is undergoing Signalling Only handover during a VGCS or VBS call, where MSC-B already has a Bearer established, so that MSC-B can determine the Group or Broadcast Call to which it shall attach the subscriber, see 3GPP TS 48.008 [49].

UESBI

[For definition of this parameter see clause 7.6.6. It shall be present if it is available and the access network protocol is BSSAP.](#)

Handover Number

For definition of this parameter see clause 7.6.2. This parameter shall be returned at handover, unless the parameter HO-NumberNotRequired is sent. If the parameter Handover Number is returned, the parameter Relocation Number List shall not be returned.

Relocation Number List

For definition of this parameter see clause 7.6.2. This parameter shall be returned at relocation, unless the parameter HO-NumberNotRequired is sent. If the parameter Relocation Number List is returned, the parameter Handover Number shall not be returned.

Multicall Bearer Information

For a definition of this parameter see clause 7.6.2. This parameter shall be returned at relocation in the case that MSC-B supports multiple bearers.

Multiple Bearer Requested

For a definition of this parameter see clause 7.6.2. This parameter shall be sent when MSC-A requests multiple bearers to MSC-B.

Multiple Bearer Not Supported

For a definition of this parameter see clause 7.6.2. This parameter shall be returned at relocation when MSC-B receives Multiple Bearer Requested parameter and MSC-B does not support multiple bearers.

Selected UMTS Algorithms

For definition of this parameter see clause 7.6.6. This parameters includes the UMTS integrity and optionally encryption algorithms selected by RNC under the control of MSC-B. This UMTS parameter shall be included if the service is a part of the inter MSC inter system handover from GSM to UMTS.

Chosen Radio Resource Information

For definition of this parameter see clause 7.6.6. This parameter shall be returned at relocation if the encapsulated PDU is RANAP RAB Assignment Response and MS is in GSM access.

Selected Codec

For definition of this parameter see subclause 7.6.6. This parameter shall be included always if MSC-B supports the selection of codec based on Available Codecs List, even if Selected Codec is equal to the Currently Used Codec received in the service request. This parameter shall not be included if Available Codecs List was not received in the service request.

User error

For definition of this parameter see clause 7.6.1. The following errors defined in clause 7.6.1 may be used, depending on the nature of the fault:

- No handover number available.
- Target cell outside group call area;
- System failure.
- Unexpected data value.
- Data Missing.

Provider error

See definition of provider errors in clause 7.6.1.

**** NEXT MODIFIED SECTION ****

17.7 MAP constants and data types

17.7.1 Mobile Service data types

...

PrepareHO-Arg ::= [3] SEQUENCE {		
targetCellId	[0] GlobalCellId	OPTIONAL,
ho-NumberNotRequired	NULL	OPTIONAL,
targetRNCId	[1] RNCId	OPTIONAL,
an-APDU	[2] AccessNetworkSignalInfo	OPTIONAL,
multipleBearerRequested	[3] NULL	OPTIONAL,
imsi	[4] IMSI	OPTIONAL,
integrityProtectionInfo	[5] IntegrityProtectionInformation	OPTIONAL,
encryptionInfo	[6] EncryptionInformation	OPTIONAL,
radioResourceInformation	[7] RadioResourceInformation	OPTIONAL,
allowedGSM-Algorithms	[9] AllowedGSM-Algorithms	OPTIONAL,
allowedUMTS-Algorithms	[10] AllowedUMTS-Algorithms	OPTIONAL,
radioResourceList	[11] RadioResourceList	OPTIONAL,
extensionContainer	[8] ExtensionContainer	OPTIONAL,
...		
rab-Id	[12] RAB-Id	OPTIONAL,
bssmap-ServiceHandover	[13] BSSMAP-ServiceHandover	OPTIONAL,
ranap-ServiceHandover	[14] RANAP-ServiceHandover	OPTIONAL,
bssmap-ServiceHandoverList	[15] BSSMAP-ServiceHandoverList	OPTIONAL,
asciiCallReference	[20] ASCII-CallReference	OPTIONAL,
geran-classmark	[16] GERAN-Classmark	OPTIONAL,
currentlyUsedCodec	[17] Codec	OPTIONAL,
availableCodecsList	[18] AvailableCodecsList	OPTIONAL,
rab-ConfigurationIndicator	[19] NULL	OPTIONAL,
uesbi	[xx] UESBI	OPTIONAL
}		

```
UESBI ::= OCTET STRING (SIZE (8))
-- Octets are coded according the UESBI information element in 3GPP TS 25.413.
```

```
BSSMAP-ServiceHandoverList ::= SEQUENCE SIZE (1.. maxNumOfServiceHandovers) OF
    BSSMAP-ServiceHandoverInfo
```

```
BSSMAP-ServiceHandoverInfo ::= SEQUENCE {
    bssmap-ServiceHandover    BSSMAP-ServiceHandover,
    rab-Id                    RAB-Id,
    -- RAB Identity is needed to relate the service handovers with the radio access bearers.
    ...}
```

```
maxNumOfServiceHandovers INTEGER ::= 7
```

```
BSSMAP-ServiceHandover ::= OCTET STRING (SIZE (1))
-- Octets are coded according the Service Handover information element in
-- 3GPP TS 48.008.
```

```
RANAP-ServiceHandover ::= OCTET STRING (SIZE (1))
-- Octet contains a complete Service-Handover data type
-- as defined in 3GPP TS 25.413, encoded according to the encoding scheme
-- mandated by 3GPP TS 25.413
-- Padding bits are included in the least significant bits.
```

...

CR-Form-v7
CHANGE REQUEST
⌘ 29.010 CR 089 ⌘ rev 1 ⌘ Current version: 5.2.0 ⌘

For **HELP** on using this form, see bottom of this page or look at the pop-up text over the ⌘ symbols.

Proposed change affects: UICC apps ME Radio Access Network Core Network

Title:	⌘ Handling of UE-specific behaviour data in the relay MSC		
Source:	⌘ CN4		
Work item code:	⌘ Late UE Date: ⌘ 21/05/2003		
Category:	⌘ F Release: ⌘ Rel-5 Use <u>one</u> of the following categories: <table style="width: 100%; border: none;"> <tr> <td style="width: 50%; vertical-align: top;"> F (correction) A (corresponds to a correction in an earlier release) B (addition of feature), C (functional modification of feature) D (editorial modification) Detailed explanations of the above categories can be found in 3GPP TR 21.900. </td> <td style="width: 50%; vertical-align: top;"> Use <u>one</u> of the following releases: 2 (GSM Phase 2) R96 (Release 1996) R97 (Release 1997) R98 (Release 1998) R99 (Release 1999) Rel-4 (Release 4) Rel-5 (Release 5) Rel-6 (Release 6) </td> </tr> </table>	F (correction) A (corresponds to a correction in an earlier release) B (addition of feature), C (functional modification of feature) D (editorial modification) Detailed explanations of the above categories can be found in 3GPP TR 21.900 .	Use <u>one</u> of the following releases: 2 (GSM Phase 2) R96 (Release 1996) R97 (Release 1997) R98 (Release 1998) R99 (Release 1999) Rel-4 (Release 4) Rel-5 (Release 5) Rel-6 (Release 6)
F (correction) A (corresponds to a correction in an earlier release) B (addition of feature), C (functional modification of feature) D (editorial modification) Detailed explanations of the above categories can be found in 3GPP TR 21.900 .	Use <u>one</u> of the following releases: 2 (GSM Phase 2) R96 (Release 1996) R97 (Release 1997) R98 (Release 1998) R99 (Release 1999) Rel-4 (Release 4) Rel-5 (Release 5) Rel-6 (Release 6)		

Reason for change:	⌘ In SA2#31 the signaling principles for the "Provision of UE Specific Behaviour Information to Network Entities" were agreed in TS 23.195 v 1.1.0. Regarding handover and relocation procedures it was agreed that: - UESBI-lu shall be sent from anchor to target MSC in inter-MSC handover and relocation.
Summary of change:	⌘ The description of the transfer of UE-specific behaviour data (UESBI) between MSC-A and MSC-B and handling of the data in MSC-B are added.
Consequences if not approved:	⌘ Misalignment with stage 2.

Clauses affected:	⌘ 4.5.5, 4.7.1, 4.7.5, 4.8.5									
Other specs affected:	<table border="1" style="border-collapse: collapse;"> <tr> <td style="width: 20px; text-align: center;">Y</td> <td style="width: 20px; text-align: center;">N</td> </tr> <tr> <td style="text-align: center;">X</td> <td style="text-align: center;"> </td> </tr> <tr> <td style="text-align: center;"> </td> <td style="text-align: center;">X</td> </tr> <tr> <td style="text-align: center;"> </td> <td style="text-align: center;">X</td> </tr> </table> Other core specifications	Y	N	X			X		X	⌘ 23.009 CR 097, 29.002 CR 609 or 627
Y	N									
X										
	X									
	X									
Other comments:	⌘									

How to create CRs using this form:

Comprehensive information and tips about how to create CRs can be found at <http://www.3gpp.org/specs/CR.htm>. Below is a brief summary:

- 1) Fill out the above form. The symbols above marked ⌘ contain pop-up help information about the field that they are closest to.

- 2) Obtain the latest version for the release of the specification to which the change is proposed. Use the MS Word "revision marks" feature (also known as "track changes") when making the changes. All 3GPP specifications can be downloaded from the 3GPP server under <ftp://ftp.3gpp.org/specs/> For the latest version, look for the directory name with the latest date e.g. 2001-03 contains the specifications resulting from the March 2001 TSG meetings.
- 3) With "track changes" disabled, paste the entire CR form (use CTRL-A to select it) into the specification just in front of the clause containing the first piece of changed text. Delete those parts of the specification which are not relevant to the change request.

4.5.5.X UESBI

This information shall be stored by 3G MSC-B and sent to an RNS in Relocation Request, when 3G MSC-B performs relocation or handover to UMTS.

Transfer of information:

The UESBI information is transferred to 3G MSC-B in:

- the Prepare Handover Request MAP message.

**** NEXT MODIFIED SECTION ****

4.7.1 Basic Inter-MSc Handover

When a Mobile Station is handed over between two MSCs, the establishment of a connection between them (described in 3GPP TS 23.009) requires interworking between A-Interface, Iu-Interface and E-Interface.

The signalling at initiation, execution and completion of the Basic Inter-MSc handover procedure is shown in figures 37 to 42 with both possible positive or negative outcomes.

Additionally figure 37b shows the possible interworking when the trace related message is transparently transferred on the E-Interface at Basic Inter-MSc Handover initiation.

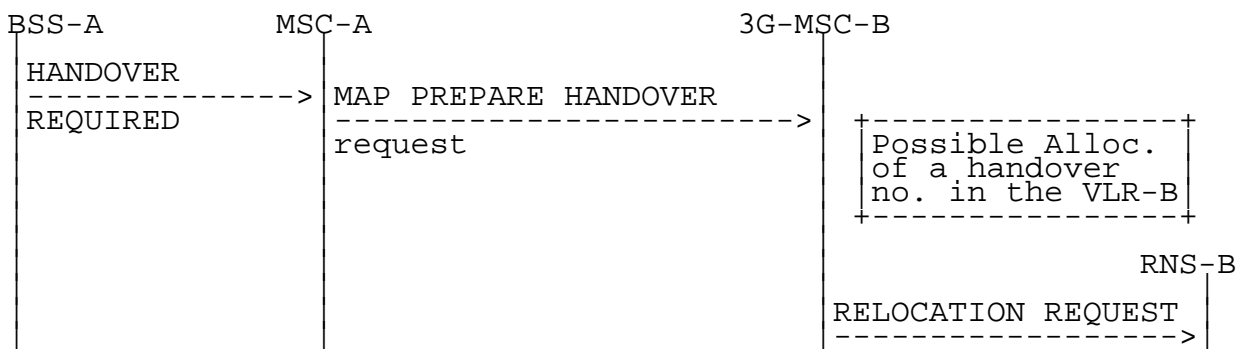


Figure 37a: Signalling for Basic Inter-MSc Handover initiation (no trace related messages transferred)

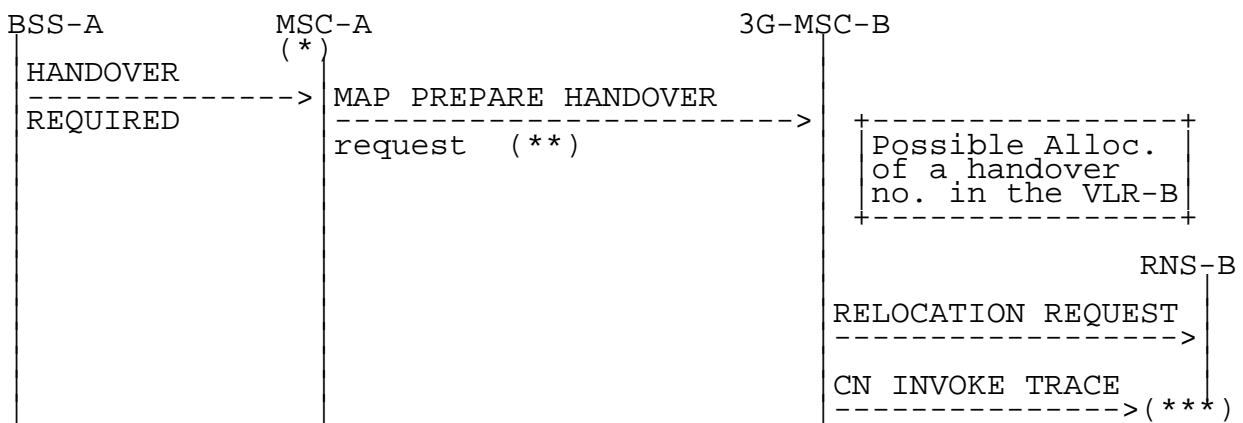


Figure 37b: Signalling for Basic Inter-MSc Handover initiation (CN invoke trace message transferred)

- (*): Tracing invocation has been received from VLR.
- (**): In that case, HANOVER REQUEST and MSC INVOKE TRACE messages are included within the AN-apdu parameter.
- (***): CN INVOKE TRACE is forwarded to RNS-B if supported by 3G_MSC-B.

Possible Positive outcomes: successful radio resources allocation and handover number allocation (if performed):

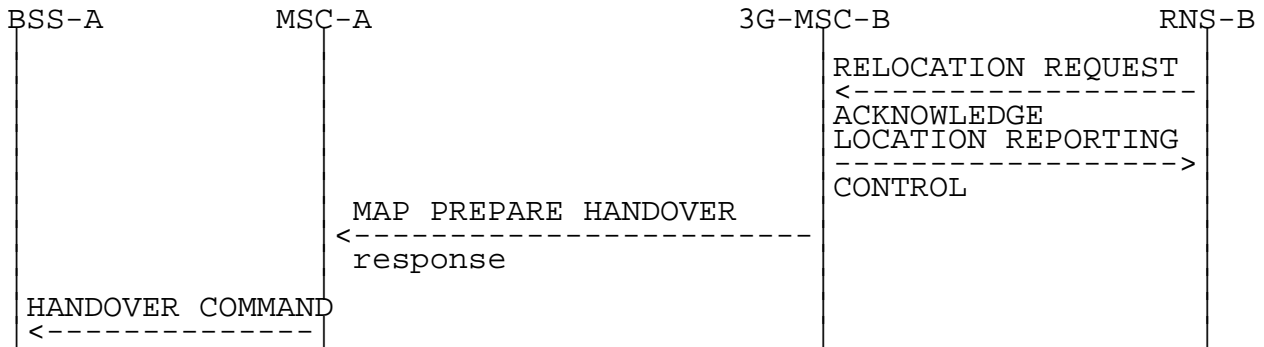
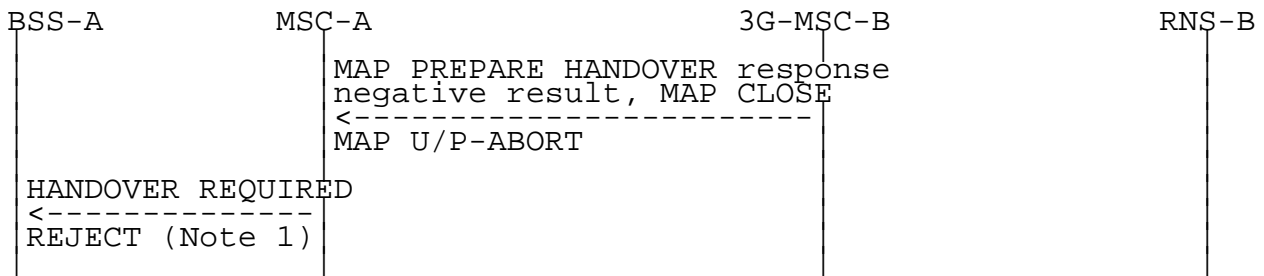


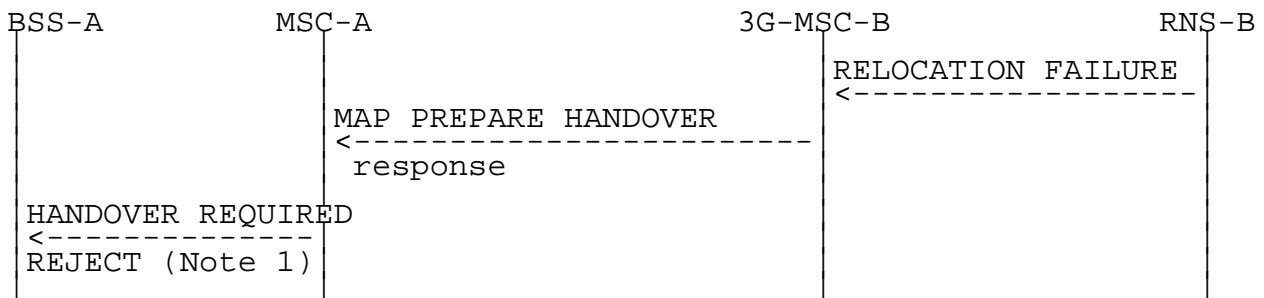
Figure 38: Signalling for Basic Inter-MSC Handover execution (Positive outcome)

Possible Negative outcomes:

- a) user error detected, or handover number allocation unsuccessful (if performed), or component rejection or dialogue abortion performed by 3G_MSC-B:



- b) radio resources allocation failure:



- c) unsuccessful handover execution (Reversion to the old radio resources):

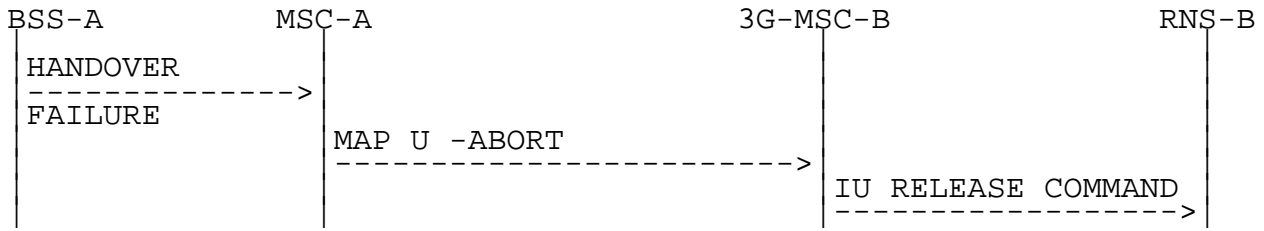


Figure 39: Signalling for Basic Inter-MSC Handover execution (Negative outcomes)

NOTE 1: Possible rejection of the handover because of the negative outcome of MAP or RANAP procedure.

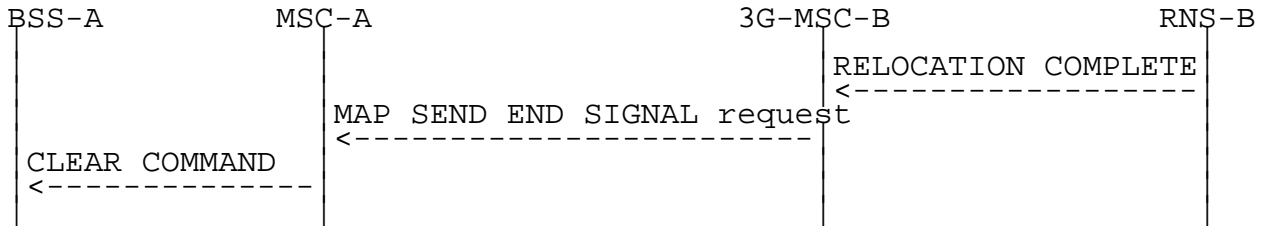


Figure 40: Signalling for Basic Inter-MSC Handover completion

Positive outcome:

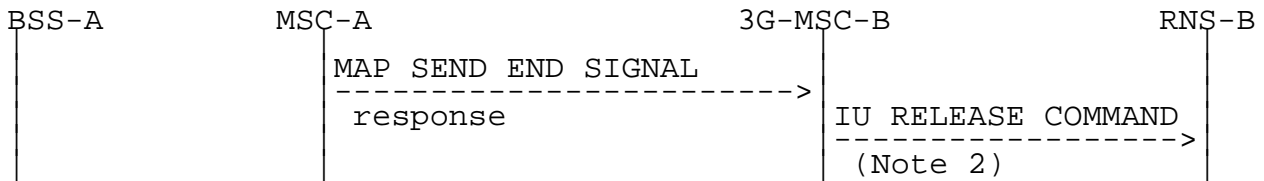


Figure 41: Signalling for Basic Inter-MSC Handover completion (Positive outcome)

Negative outcome:

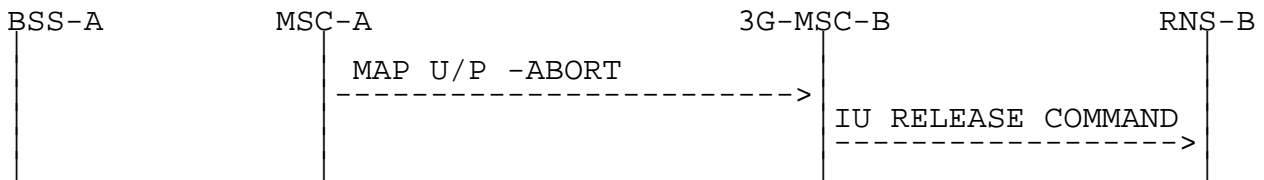


Figure 42: Signalling for Basic Inter-MSC Handover completion (Negative outcome)

NOTE 2: From interworking between MAP and RANAP point of view, when the call is released.

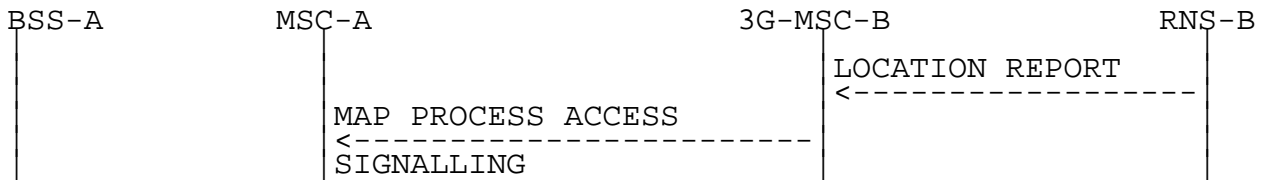


Figure 42a: Signalling for updating of anchor MSC after change of location in RNS

The handover procedure is normally triggered by BSS-A by sending a HANOVER REQUIRED message on A-Interface to MSC-A. The invocation of the Basic Inter-MSC handover procedure is performed and controlled by MSC-A. The sending of the MAP Prepare-Handover request to 3G_MSC-B is triggered in MSC-A upon receipt of the HANOVER REQUIRED message. The identity of the target RNC where the call is to be handed over in 3G_MSC-B area, provided in the HANOVER REQUIRED message in the information element Cell Identifier List (Preferred), is mapped to the target RNC Id MAP parameter and the HANOVER REQUEST message is encapsulated in the an-

APDU MAP parameter of the Prepare-Handover MAP request. 3G_MSC-B can invoke another operation towards the VLR-B (allocation of the handover number described in 3GPP TS 29.002).

Additionally, if tracing activity has been invoked, the trace related message can be transferred on the E-Interface encapsulated in the an-APDU MAP parameter of the Prepare-Handover Request. If transferred, one complete trace related message at a time shall be included in the an-APDU MAP parameter after the HANOVER REQUEST message. Note: UMTS supports only CN initiated tracing.

The interworking between Prepare Handover and HANOVER REQUIRED is as follows:

	48.008	29.002	Notes
Forward message	HANOVER REQUIRED	MAP PREPARE HANOVER request	
	BSSMAP information elements	-ho-NumberNotRequired -target RNC Id -IMSI	1
		-Integrity protection info -Encryption info -an-APDU(HANOVER REQUEST, MSC INVOKE TRACE)	2 3
	GERAN classmark	-GERAN classmark	4 7
Positive result		MAP PREPARE HANOVER response	5
Negative result	HANOVER REQUIRED REJECT	MAP PREPARE HANOVER	6
	equipment failure	System Failure	
	equipment failure	No Handover Number available	
	equipment failure	UnexpectedDataValue Data Missing	
	equipment failure	MAP CLOSE	
	equipment failure	MAP U/P -ABORT	

NOTE 1: The ho-NumberNotRequired parameter is included by MSC-A, when MSC-A decides not to use any circuit connection with 3G_MSC-B. No handover number shall be present in the positive result. Any negative response from 3G_MSC-B shall not be due to handover number allocation problem.

NOTE 2: Integrity protection information, encryption information and IMSI parameters are included by MSC-A, only when the MSC-A uses 29.002 as per release 99. These IEs are not included if the MSC-A is R98 or earlier.

NOTE 3: NOTE 3: The process performed on the BSSMAP information elements received in the HANOVER REQUIRED message is described in the 3GPP TS 48.008.

NOTE 4: The process performed on the BSSMAP information elements received in the MSC INVOKE TRACE message is described in subclause 4.5.5.6.

NOTE 5: The response to the Prepare-Handover request can include in its an-APDU parameter, identifying the 3GPP TS 48.006 protocol, either a BSSMAP HANOVER REQUEST ACKNOWLEDGE or a BSSMAP HANOVER FAILURE.

In the first case, the positive result triggers in MSC-A the sending on A-Interface of the HANOVER COMMAND.

In the second case, the positive result triggers in MSC-A optionally the sending of the HANOVER REQUIRED REJECT.

(The possible sending of the HANDOVER REQUIRED REJECT message upon receipt of the HANDOVER FAILURE is out of the scope of 3GPP TS 29.010 and lies in 3GPP TS 48.008).

NOTE 6: The possible sending of the HANDOVER REQUIRED REJECT message is described in 3GPP TS 48.008.

NOTE 7: If the GERAN Classmark was not received with the HANDOVER REQUIRED message initiating the handover, MSC-A shall include any previously received GERAN Classmark. See 3GPP TS 43.051 [17].

The interworking between Prepare Handover and RELOCATION REQUEST in 3G_MSC-B is as follows:

	29.002	25.413	Notes
Forward message	MAP PREPARE HANDOVER request -ho-NumberNotRequired -target RNC Id -IMSI -Integrity protection info -Encryption info -RANAP service handover -UESBI	RELOCATION REQUEST	1
	-an-APDU(HANDOVER REQUEST, MSC INVOKE TRACE) BSSMAP information elements: Channel Type Cause sRNC to tRNC container SNA Access Information	RANAP information elements: RAB parameters Cause sRNC to tRNC container SNA Access Information	3
		info stored/generated in/by 3G MSC-B: CN domain indicator	
Positive result	MAP PREPARE HANDOVER response -an-APDU(HANDOVER REQUEST ACK) BSSMAP information elements: Layer 3 info	RELOCATION REQUEST ACK RANAP information elements: tRNC to sRNC container	
Negative result	MAP PREPARE HANDOVER response -an-APDU(HANDOVER FAILURE) BSSMAP information elements: GERAN classmark	RELOCATION FAILURE RANAP information elements: GERAN classmark	2

NOTE 1: Integrity protection information, encryption information, IMSI and RANAP service handover parameters are included by MSC-A; only when the MSC-A uses 29.002 as per release 99. These IEs are not included if the MSC-A is R98 or earlier.

NOTE 2: If a handover to GERAN Iu-mode failed, the target RNS may include a GERAN classmark in the RELOCATION FAILURE message. See 3GPP TS 43.051 [17].

NOTE 3: SNA Access Information parameter is included by MSC-A; only when the MSC-A uses 29.002 as per release 5. These IEs are not included if the MSC-A is release 4 or earlier.

The interworking between Send End Signal and RELOCATION COMPLETE in 3G_MSC-B is as follows:

	25.413	29.002	Notes
Forward message	RELOCATION COMPLETE MAP SEND END SIGNAL request	-an-APDU (HANDOVER COMPLETE)	
Positive result	IU RELEASE COMMAND -Normal release	MAP SEND END SIGNAL response	1
Negative result	IU RELEASE COMMAND -Normal release	MAP CLOSE MAP U/P -ABORT	2

NOTE 1: The positive empty result triggers the clearing of the Radio Resources on the Iu-Interface and the release of the SCCP connection between 3G_MSC-B and RNS-B. If a circuit connection is used between MSC-A and 3G_MSC-B, the 'Normal release' clearing cause shall only be given to RNS-B when 3G_MSC-B has received a clearing indication on its circuit connection with MSC-A.

NOTE 2: The abortion of the dialogue or the rejection of the component triggers in 3G_MSC-B the clearing of its circuit connection with MSC-A, if any, of the Radio Resources on the Iu-Interface and the release of the SCCP connection between 3G_MSC-B and RNS-B.

The interworking between Send End Signal and CLEAR COMMAND in MSC-A is as follows:

	29.002	48.008	Notes
Forward message	MAP SEND END SIGNAL request	CLEAR COMMAND	
	-an-APDU (HANDOVER COMPLETE)	- Handover Successful	
Positive result			
Negative result			

The interworking between HANDOVER FAILURE in case of reversion to old channel of the MS and User Abort in MSC-A is as follows:

	48.008	29.002	Notes
Forward message	HANDOVER FAILURE	MAP U -ABORT	
	- Reversion to old channel		
Positive result			
Negative result			

**** NEXT MODIFIED SECTION ****

4.7.5.X UESBI

This information shall be stored by 3G_MSC-B and sent to an RNS in Relocation Request during the basic inter-MSC handover or when 3G_MSC-B performs a subsequent relocation or handover to UMTS.

Transfer of information:

The UESBI information is transferred to 3G_MSC-B in:

- the Prepare Handover Request MAP message.

**** NEXT MODIFIED SECTION ****

4.8.5.X UESBI

This information shall be stored by 3G_MSC-B and sent to an RNS in Relocation Request during the basic inter-MSC relocation or when 3G_MSC-B performs a subsequent intra-MSC relocation or handover to UMTS.

Transfer of information:

The UESBI information is transferred to 3G_MSC-B in:

- the Relocation Request RANAP message.

CR-Form-v7

CHANGE REQUEST

⌘ **23.012 CR 011** ⌘ rev **-** ⌘ Current version: **5.0.0** ⌘

For **HELP** on using this form, see bottom of this page or look at the pop-up text over the ⌘ symbols.

Proposed change affects: UICC apps ME Radio Access Network Core Network

Title:	⌘ Addition of procedure to retrieve UE-specific behaviour data		
Source:	⌘ CN4		
Work item code:	⌘ Late UE	Date:	⌘ 21/05/2003
Category:	⌘ F	Release:	⌘ Rel-5
	Use <u>one</u> of the following categories:		Use <u>one</u> of the following releases:
	F (correction)		2 (GSM Phase 2)
	A (corresponds to a correction in an earlier release)		R96 (Release 1996)
	B (addition of feature),		R97 (Release 1997)
	C (functional modification of feature)		R98 (Release 1998)
	D (editorial modification)		R99 (Release 1999)
	Detailed explanations of the above categories can be found in 3GPP TR 21.900 .		Rel-4 (Release 4)
			Rel-5 (Release 5)
			Rel-6 (Release 6)

Reason for change:	⌘ To allow the data for UE-specific behaviour to be retrieved at location updating		
Summary of change:	⌘		
Consequences if not approved:	⌘ Handling for "early" UEs will not work		

Clauses affected:	⌘ 1.1; figure 4.1.1.1; 4.1.2.1; figure 4.1.2.1; 4.1.2.1a (new); figure 4.1.2.1a (new)										
Other specs affected:	<table border="1" style="display: inline-table; border-collapse: collapse;"> <tr> <td style="width: 20px; text-align: center;">Y</td> <td style="width: 20px; text-align: center;">N</td> </tr> <tr> <td style="text-align: center;">X</td> <td style="text-align: center;"></td> </tr> <tr> <td style="text-align: center;"></td> <td style="text-align: center;">X</td> </tr> <tr> <td style="text-align: center;"></td> <td style="text-align: center;">X</td> </tr> </table>	Y	N	X			X		X	Other core specifications	⌘ 23.195 (new specification)
Y	N										
X											
	X										
	X										
		Test specifications									
		O&M Specifications									
Other comments:	⌘ Two editorial errors in the list of references have been corrected. The SDL diagrams for the processes Update_Location_MSC and Update_Location_VLR have been completely redrawn because there was no SDL source available. The diagrams have been editorially rearranged to save one sheet for each process. This CR is for the variant of "Early UE" handling in which the CN sends the IMEISV to the AN										

*** First modified section ***

1.1 References

The following documents contain provisions which, through reference in this text, constitute provisions of the present document.

- References are either specific (identified by date of publication, edition number, version number, etc.) or non-specific.
- For a specific reference, subsequent revisions do not apply.
- For a non-specific reference, the latest version applies. In the case of a reference to a 3GPP document (including a GSM document), a non-specific reference implicitly refers to the latest version of that document *in the same Release as the present document*.

- | | |
|-------|--|
| [1] | 3GPP TR 21.905: "3G Vocabulary". |
| [2] | 3GPP TS 23.002: "Network architecture". |
| [3] | 3GPP TS 23.003: "Numbering, addressing and identification". |
| [4] | 3GPP TS 23.007: "Restoration procedures". |
| [5] | 3GPP TS 23.008: "Organization of subscriber data". |
| [6] | 3GPP TS 23.022: "Functions related to Mobile Station (MS) in idle mode". |
| [7] | 3GPP TS 23.116: "Super-Charger Technical Realisation; Stage 2". |
| [8] | 3GPP TS 29.002: "Mobile Application Part (MAP) specification". |
| [9] | 3GPP TS 29.007: "General requirements on interworking between the Public Land Mobile Network (PLMN) and the Integrated Services Digital Network (ISDN) or Public Switched Telephone Network (PSTN)". |
| [10] | GSM 043.020 : " Digital cellular telecommunication system (Phase 2+) ; Security related network functions". |
| [11] | 3GPP TS 23.078: " <u>Customised Applications for Mobile network Enhanced Logic (CAMEL) Phase 43</u> – stage2 " |
| [11a] | <u>3GPP TS 23.195: "Provision of UE Specific Behaviour Information to Network Entities".</u> |
| [12] | 3GPP TS 23.236: "Intra Domain Connection of RAN Nodes to Multiple CN Nodes" |

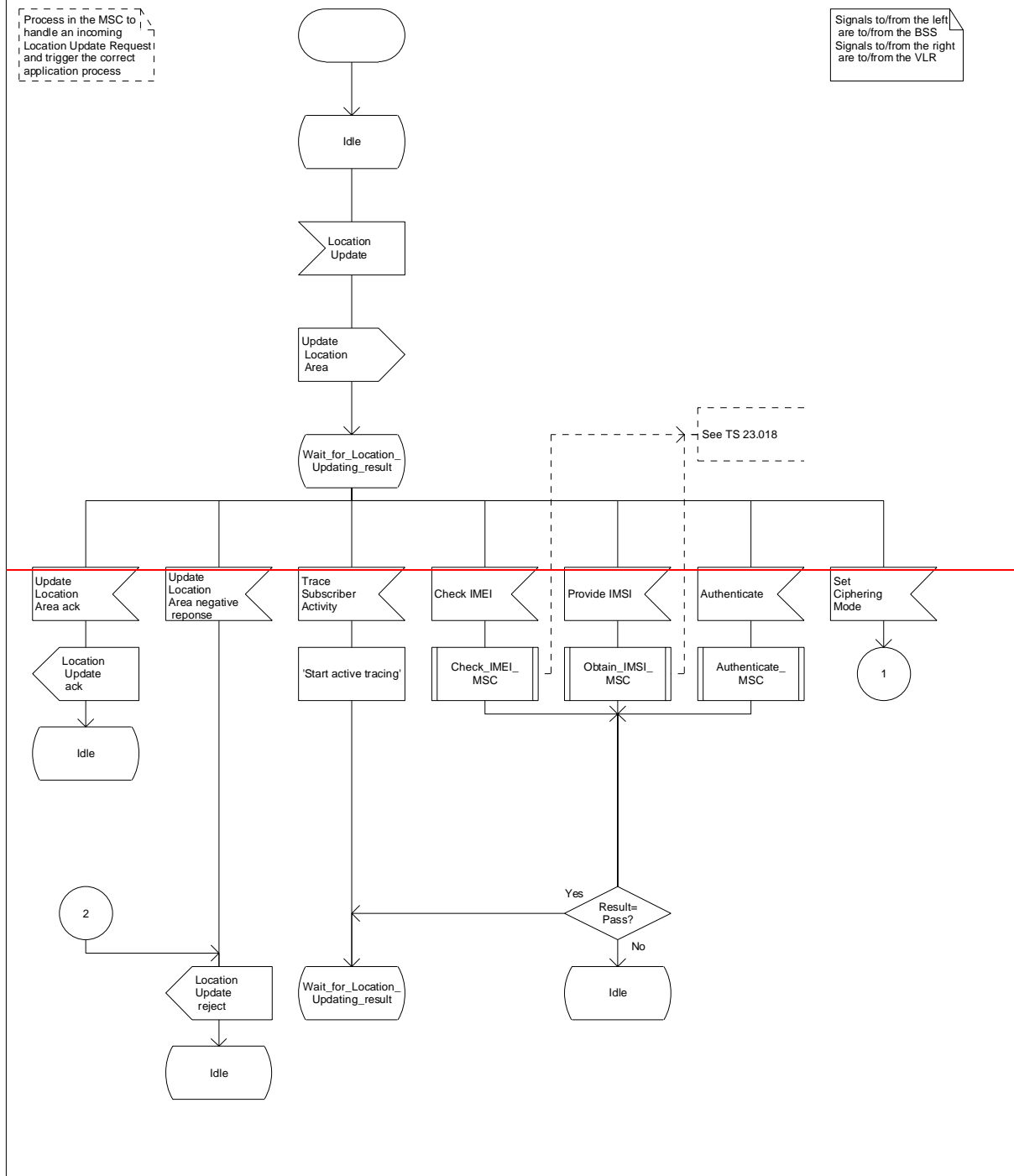
*** Next modified section ***

Process Update_Location_Area_MSC

1(3)

Process in the MSC to handle an incoming Location Update Request and trigger the correct application process

Signals to/from the left are to/from the BSS
Signals to/from the right are to/from the VLR



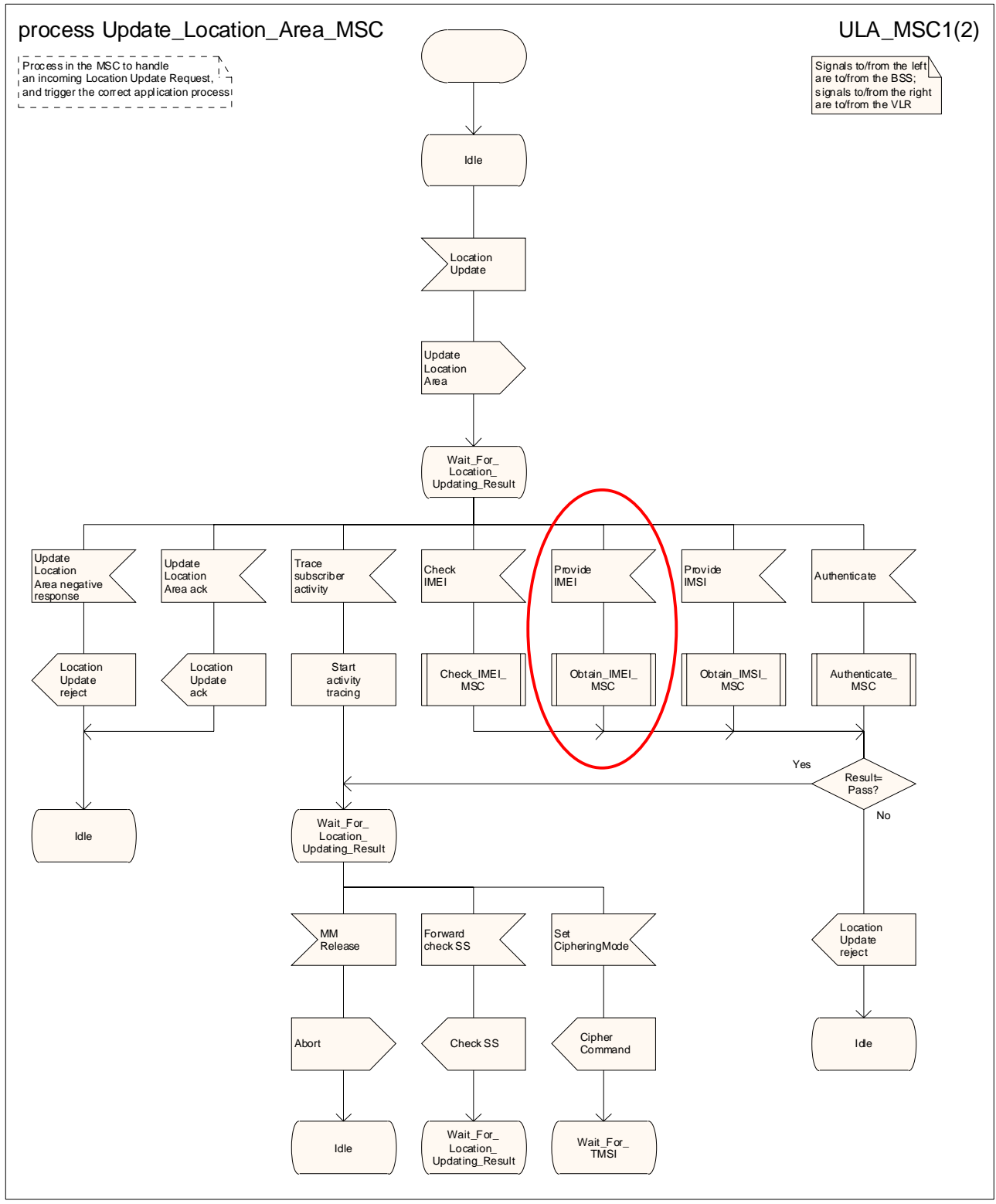


Figure 4.1.1.1 (sheet 1 of 23): Process Update_Location_Area_MSC

Process Update_Location_Area_MSC

2(3)

Process in the MSC to handle an incoming Location Update Request and trigger the correct application process

Signals to/from the left are to/from the BSS
Signals to/from the right are to/from the VLR

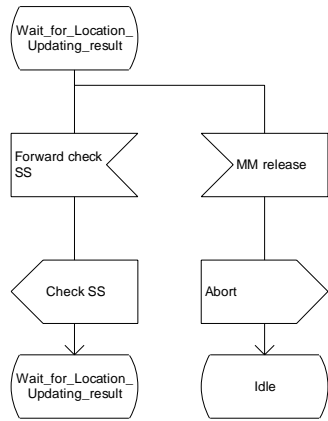


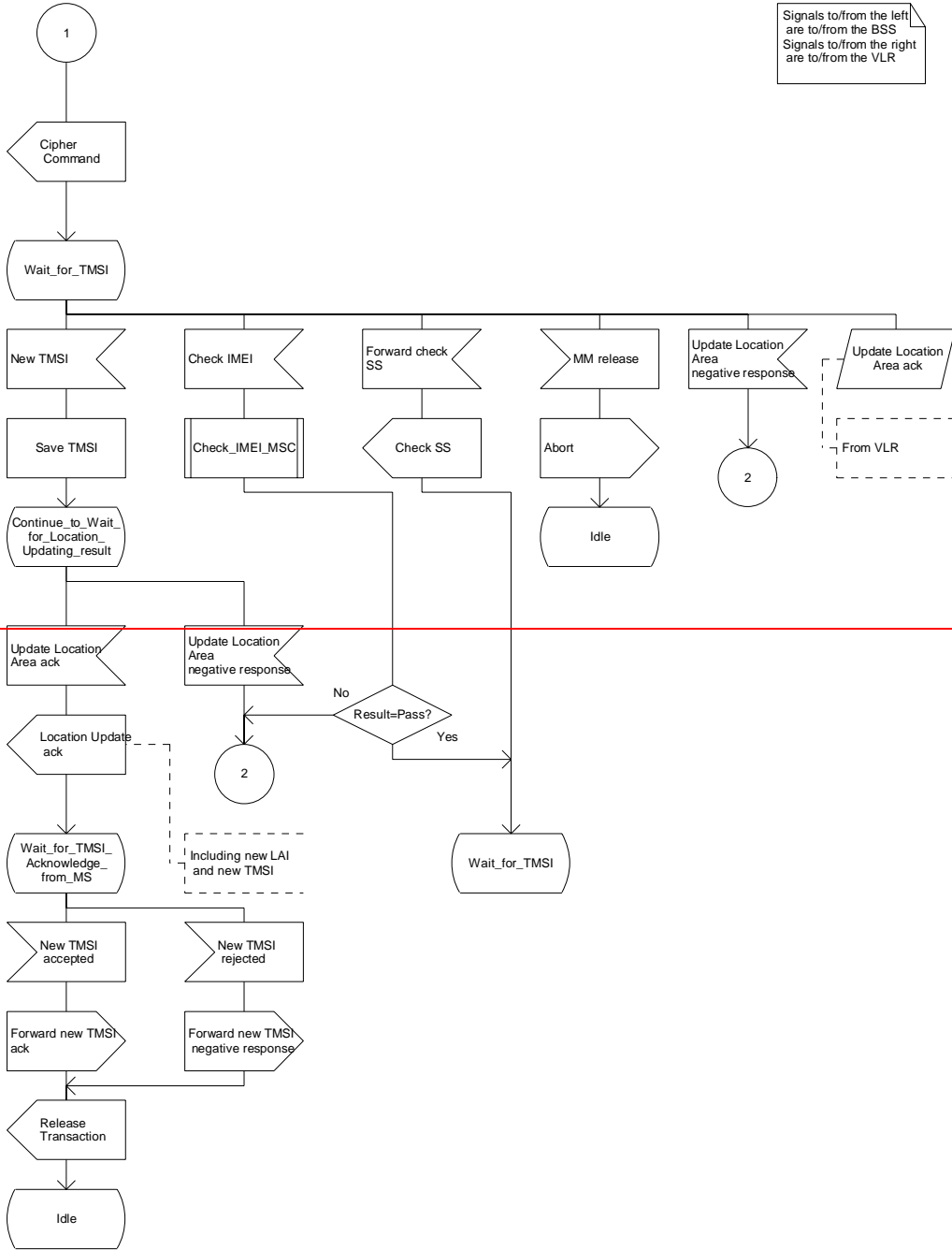
Figure 4.1.1.1 (sheet 2 of 3): Process Update_Location_Area_MSC

Process Update_Location_Area_MSC

3(3)

Process in the MSC handle an incoming Location Update Req

Signals to/from the left are to/from the BSS
Signals to/from the right are to/from the VLR



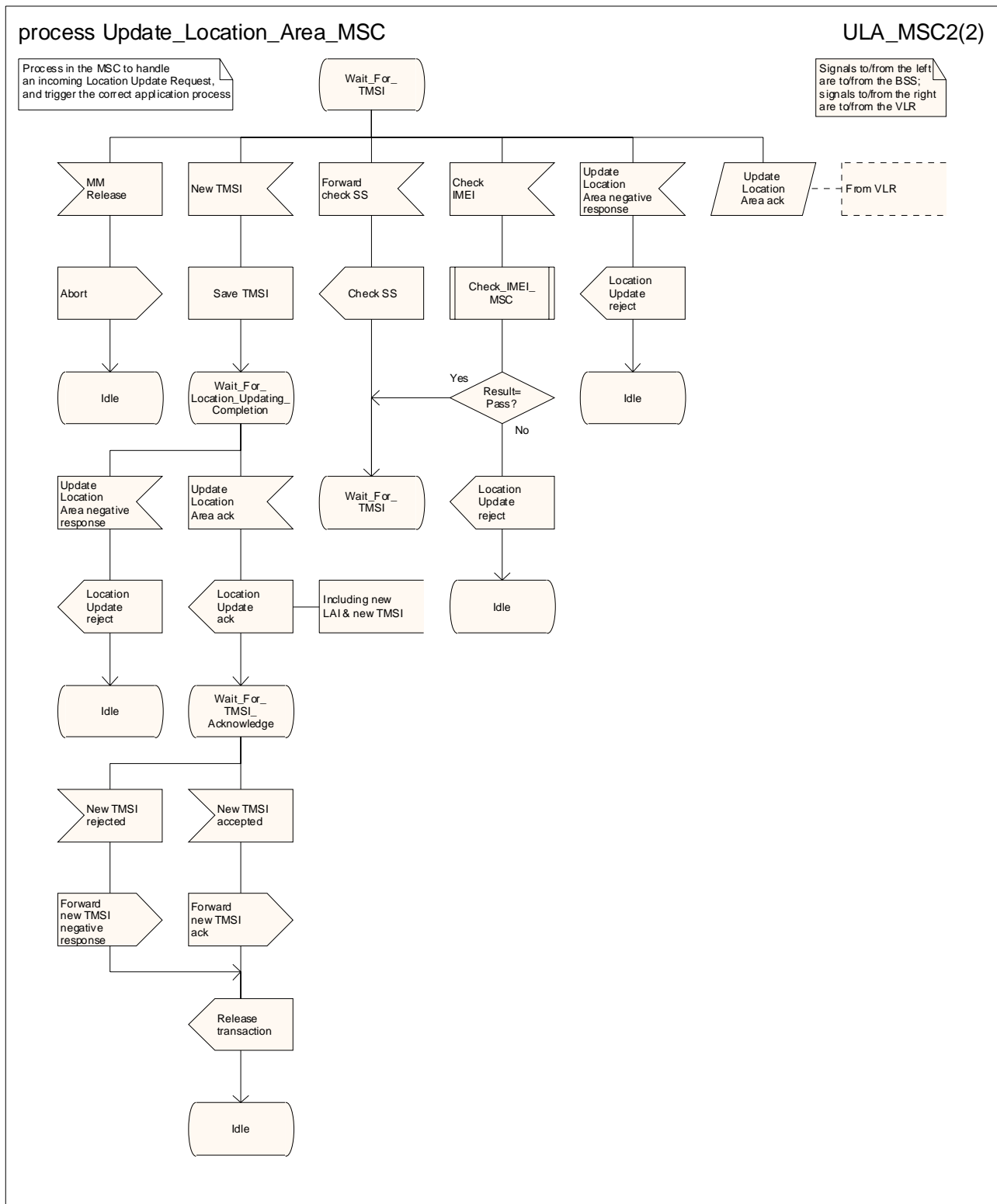


Figure 4.1.1.1 (sheet 23 of 23): Process Update_Location_Area_MSC

*** Next modified section ***

4.1.2.1 Process Update_Location_Area_VLR

General comment: at any stage in the location updating process the MSC may receive an indication from the BSS that the MM transaction has been released. The MSC then sends an Abort signal to the VLR. Upon receipt of this message, the VLR shall follow one of two possible courses of action.

The two possible courses of action and the conditions determining which course shall be taken are as follows:

1. If a successfully authenticated radio connection is already established before the Abort message is received, the VLR shall ignore the message.
2. If a successfully authenticated radio connection has not been established before the Abort message is received, the VLR shall abort the Update Location Area process and return to the idle state.

Sheet 1: the location area updating process will be activated by receiving an Update Location Area indication from the MSC. If there are parameter errors in the indication, the process is terminated with the appropriate error sent in the Update Location Area response to the MSC. Else, the behaviour will depend on the subscriber identity received, either an IMSI or a TMSI.

Sheet 1: the procedure "Retrieve_UESBI_If_required" is specific to "Early UE" handling. If the VLR does not support "Early UE" handling, processing continues from the "Yes" exit of the test "Result=Pass?".

Sheet 2: at the decision "HLR updating required?" the "True" branch shall be taken if and only if one or more of the following conditions is true:

- (1) Location Info Confirmed in HLR is false.
- (2) Data Confirmed by HLR is false.

The type of Location Update is retrieved in 3G TS 23.078 procedure 'Set_Notification_Type' and is returned into the 'Notify' variable; this information is necessary for the CAMEL Mobility Management event notification procedure 3G TS 23.078 'Notify_gsmSCF'.

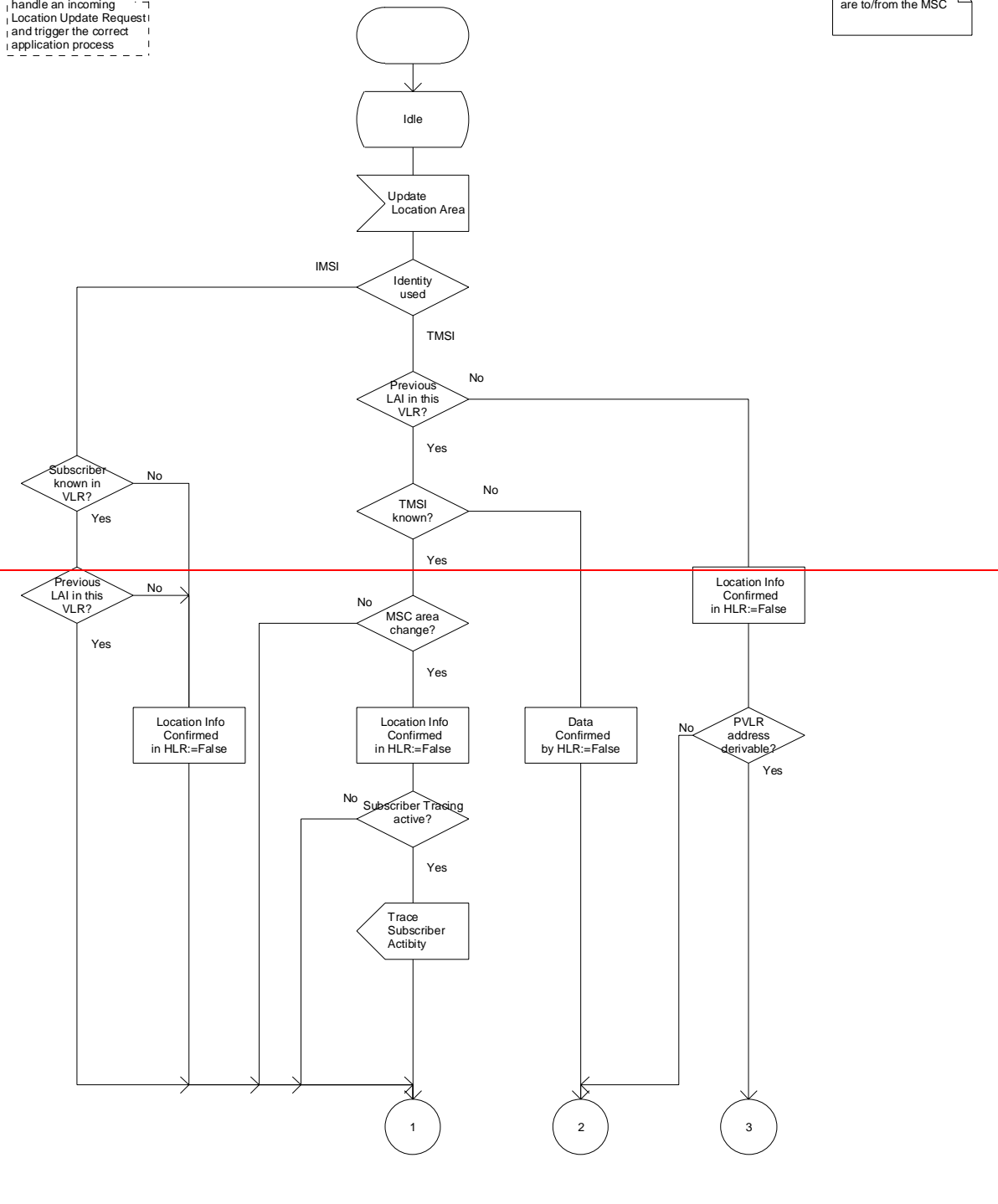
***** Next modified section *****

Process Update_Location_Area_VLR

ULA_VLR1(4)

Process in the VLR to handle an incoming Location Update Request and trigger the correct application process

Signals to/from the left are to/from the MSC



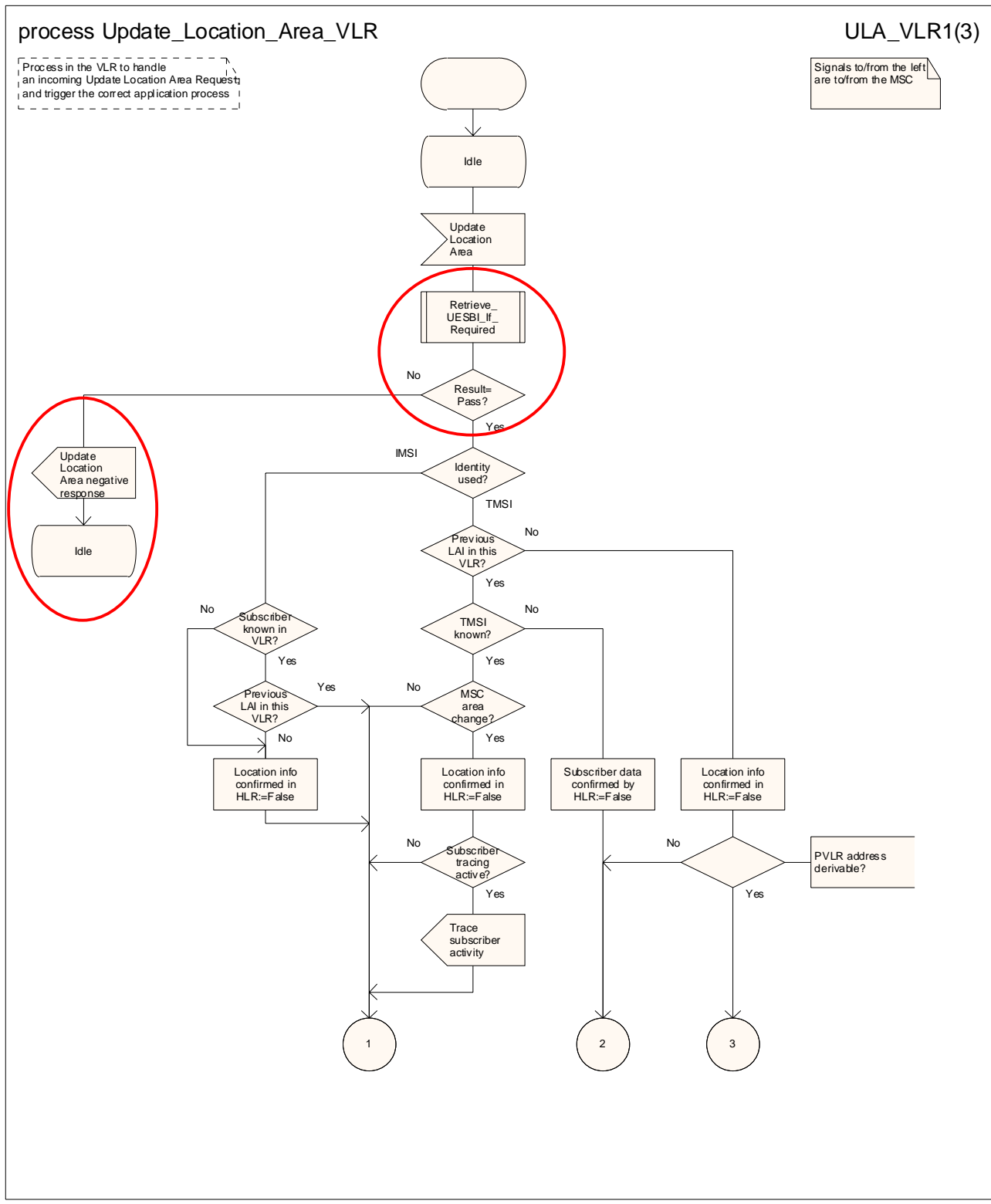


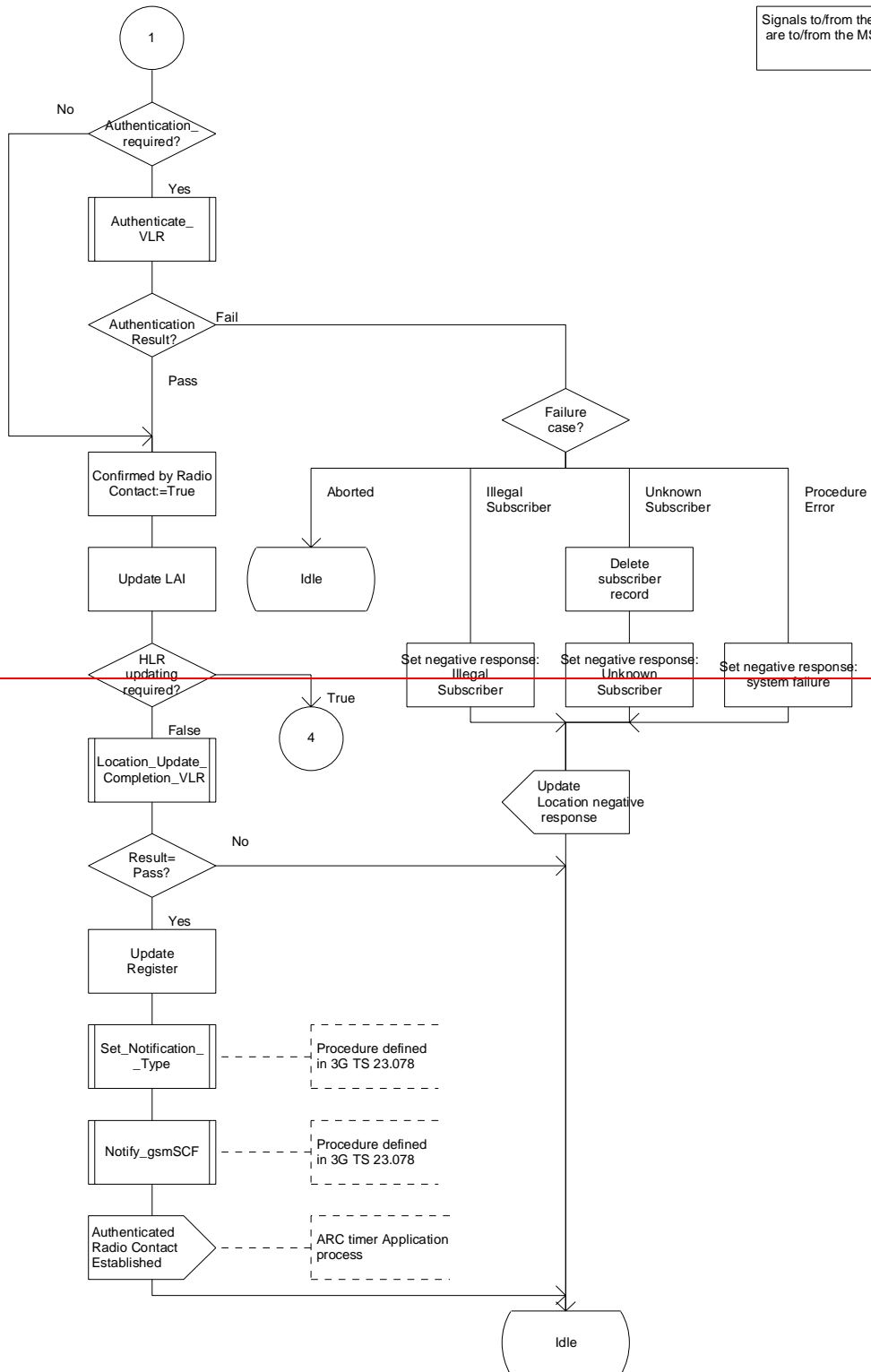
Figure 4.1.2.1 (sheet 1 of 34): Process Update_Location_Area_VLR

Process Update_Location_Area_VLR

ULA_VLR2(4)

Process in the VLR to handle an incoming Location Update Request and trigger the correct application process

Signals to/from the left are to/from the MSC



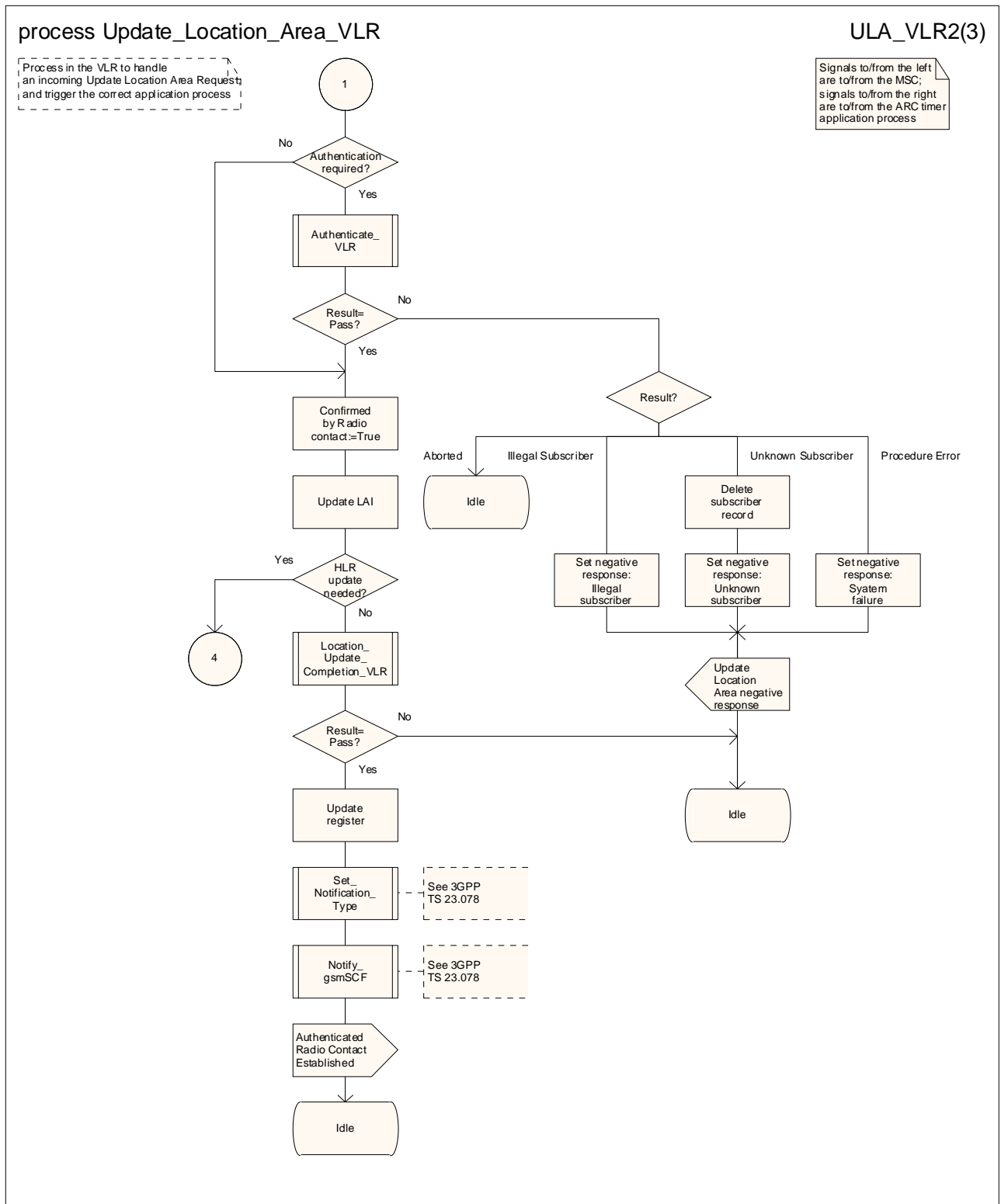


Figure 4.1.2.1 (sheet 2 of 34): Process Update_Location_Area_VLR

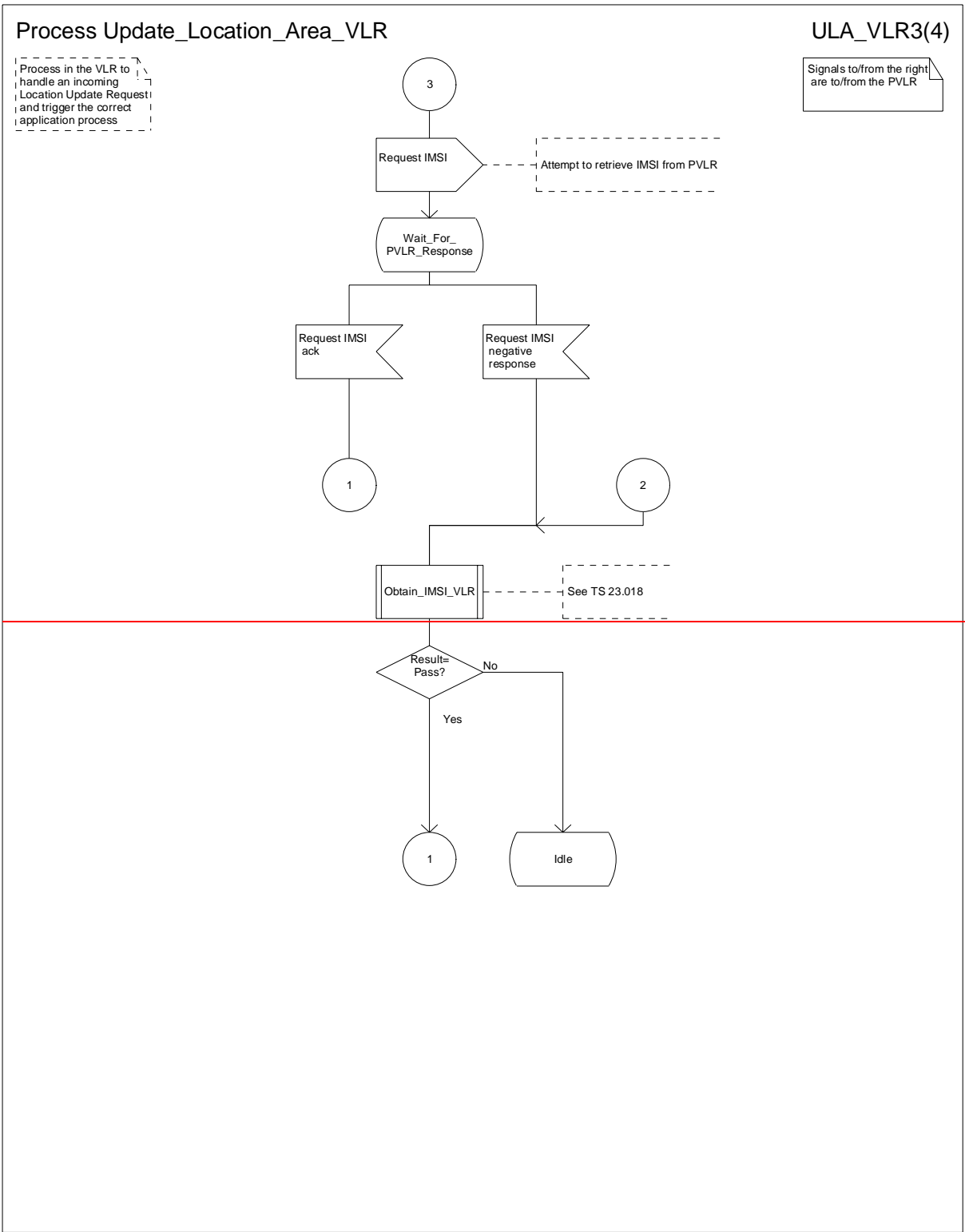


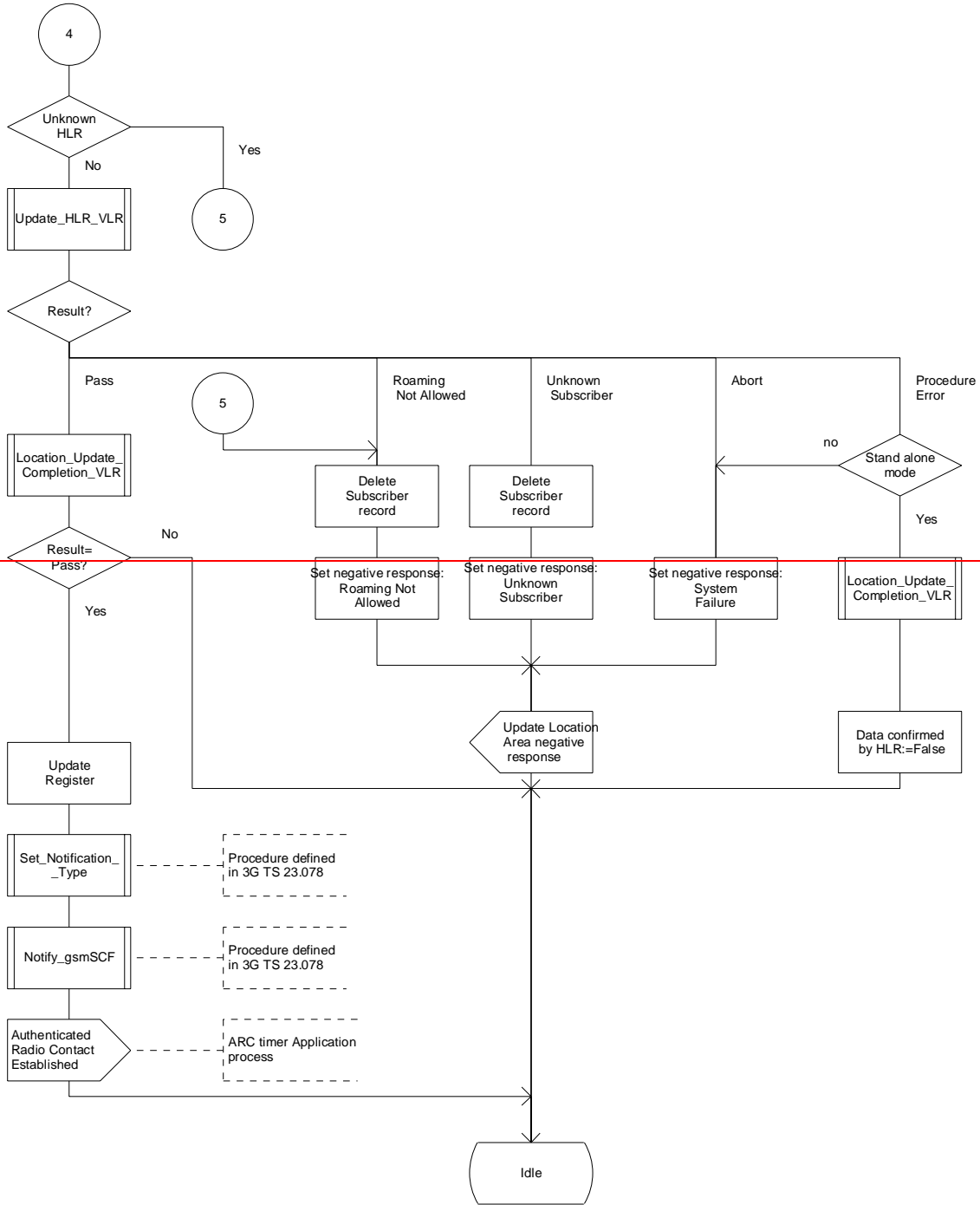
Figure 4.1.2.1 (sheet 3 of 4): Process Update_Location_Area_VLR

Process Update_Location_Area_VLR

ULA_VLR4(4)

Process in the VLR to handle an incoming Location Update Request and trigger the correct application process

Signals to/from the left are to/from the MSC



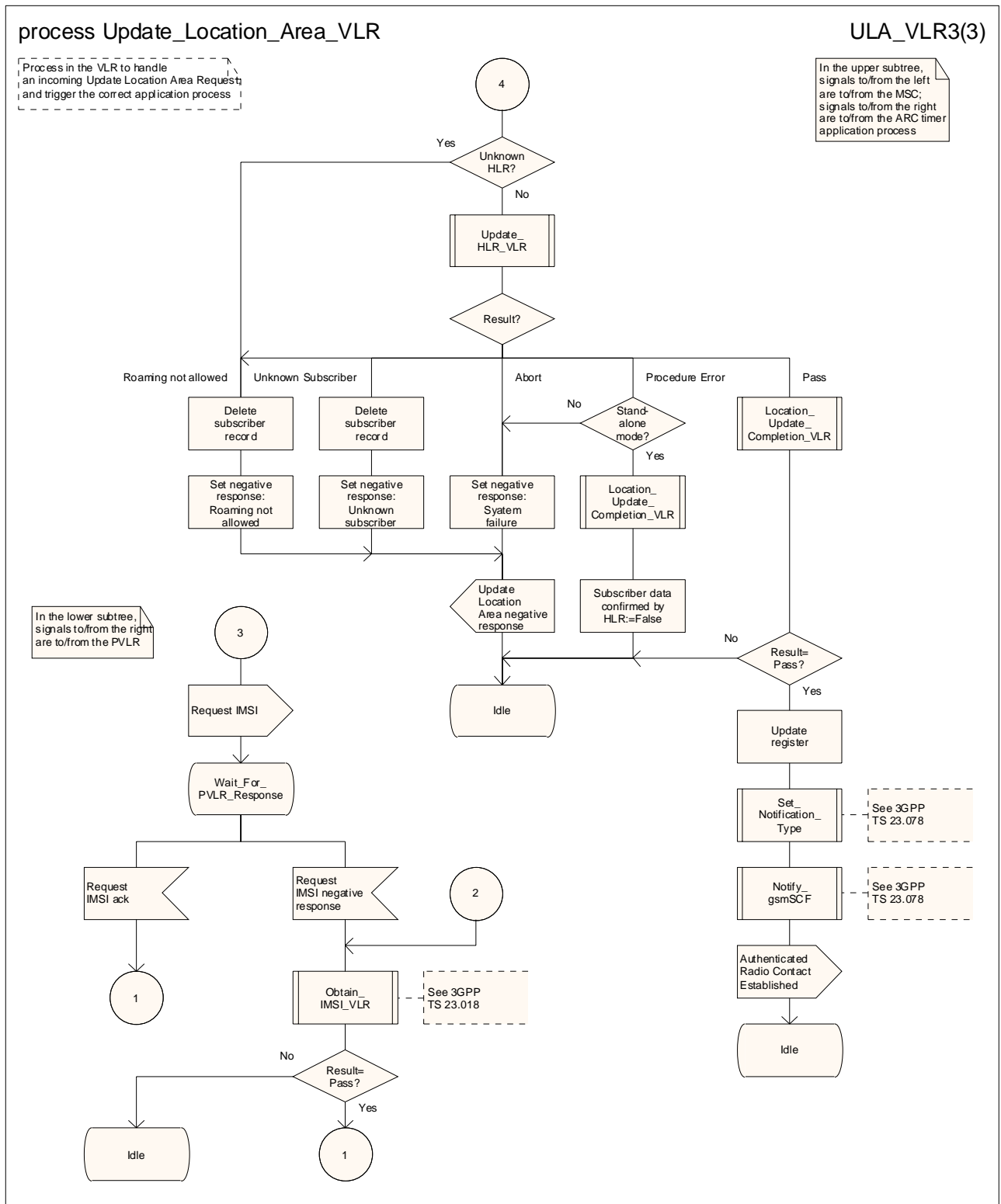


Figure 4.1.2.1 (sheet 34 of 34): Process Update_Location_Area_VLR

4.1.2.1a Procedure Retrieve UESBI If Required

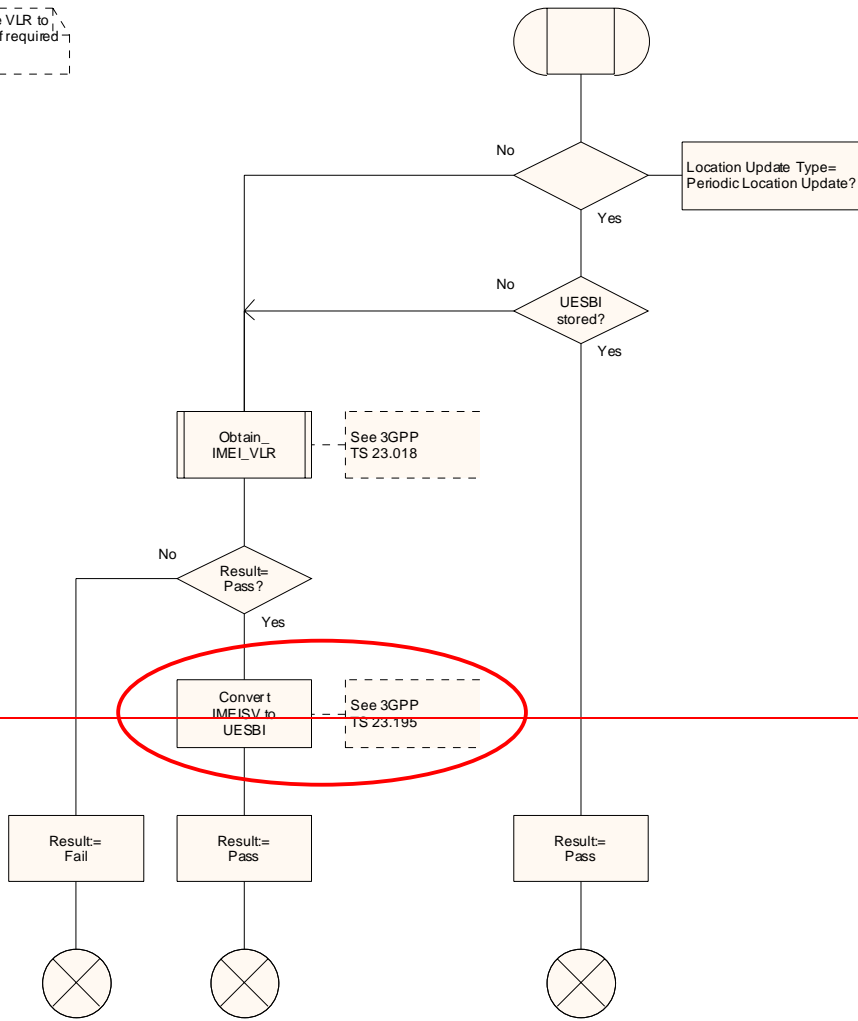
~~The task "Convert IMEISV to UESBI" is defined in detail in 3GPP TS 23.195 [25a].~~

procedure Retrieve_UESBI_If_Required

R_UESBI_IR1(1)

Procedure in the VLR to retrieve UESBI if required

Signals to/from the left are to/from the MSC



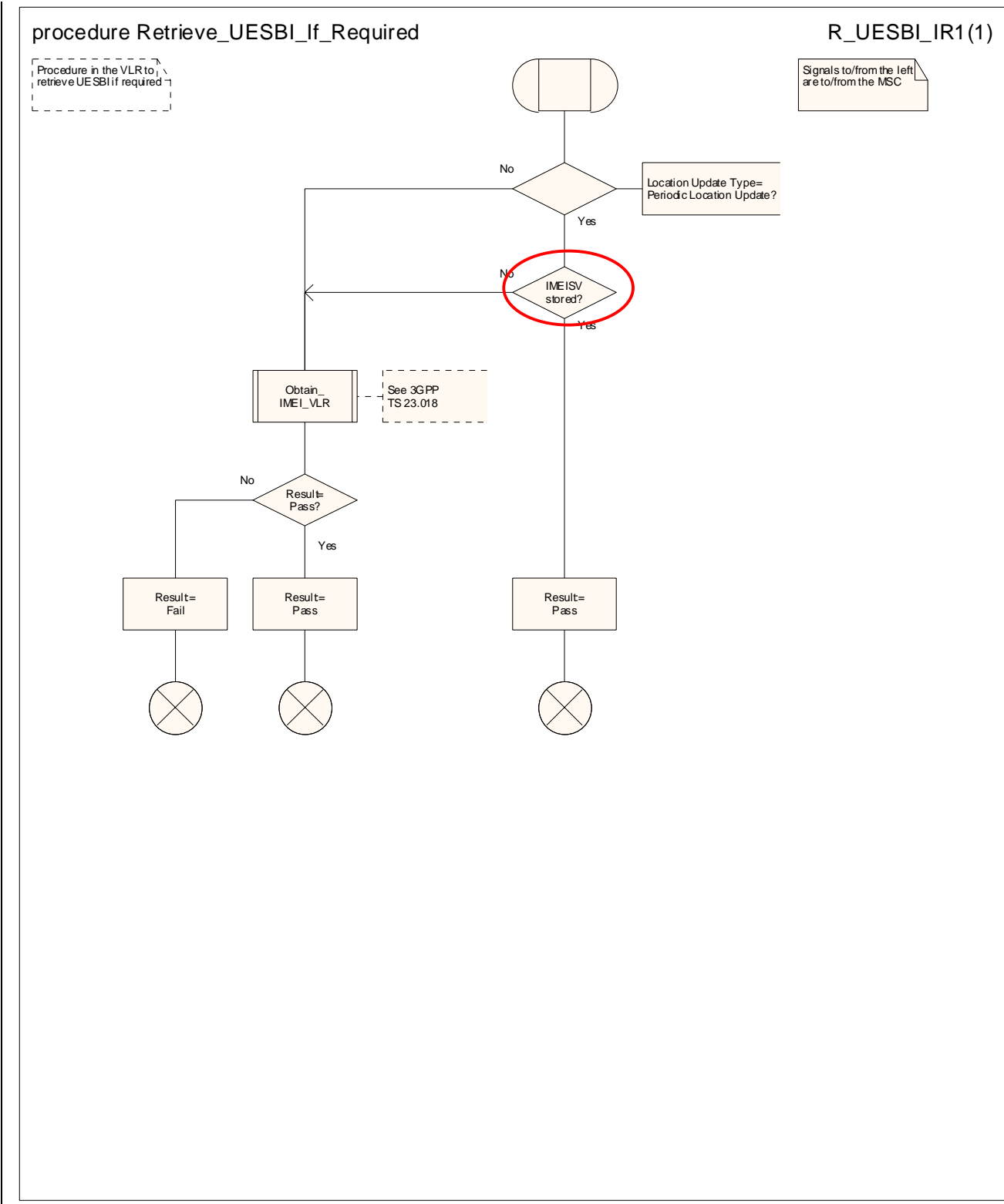


Figure 4.1.2.1a: Procedure Retrieve UESBI If Required

***** End of document *****

CR-Form-v7

CHANGE REQUEST

⌘ **23.018 CR 125** ⌘ rev **-** ⌘ Current version: **5.5.0** ⌘

For **HELP** on using this form, see bottom of this page or look at the pop-up text over the ⌘ symbols.

Proposed change affects: UICC apps ME Radio Access Network Core Network

Title:	⌘ Addition of procedure to retrieve UE-specific behaviour data		
Source:	⌘ CN4		
Work item code:	⌘ Late UE	Date:	⌘ 21/05/2003
Category:	⌘ F	Release:	⌘ Rel-5
	Use <u>one</u> of the following categories:		Use <u>one</u> of the following releases:
	F (correction)		2 (GSM Phase 2)
	A (corresponds to a correction in an earlier release)		R96 (Release 1996)
	B (addition of feature),		R97 (Release 1997)
	C (functional modification of feature)		R98 (Release 1998)
	D (editorial modification)		R99 (Release 1999)
	Detailed explanations of the above categories can be found in 3GPP TR 21.900 .		Rel-4 (Release 4)
			Rel-5 (Release 5)
			Rel-6 (Release 6)

Reason for change:	⌘ To allow the data for UE-specific behaviour to be retrieved when the UE requests access to the network		
Summary of change:	⌘ Add to the procedure Process_Access_Request_VLR the possibility to trigger retrieval of the UE-specific behaviour data.		
Consequences if not approved:	⌘ Handling for "early" UEs will not work		

Clauses affected:	⌘ 2; 7.1.2.2; figure 7.1.2.2a										
Other specs affected:	<table border="1" style="display: inline-table; border-collapse: collapse;"> <tr> <td style="width: 20px; text-align: center;">Y</td> <td style="width: 20px; text-align: center;">N</td> </tr> <tr> <td style="text-align: center;">X</td> <td style="text-align: center;"></td> </tr> <tr> <td style="text-align: center;"></td> <td style="text-align: center;">X</td> </tr> <tr> <td style="text-align: center;"></td> <td style="text-align: center;">X</td> </tr> </table>	Y	N	X			X		X	Other core specifications	⌘ 23.195 (new specification)
Y	N										
X											
	X										
	X										
		Test specifications									
		O&M Specifications									
Other comments:	⌘ This CR is for the variant of "Early UE" handling in which the CN sends the IMEISV to the AN										

***** First modified section *****

2 References

The following documents contain provisions which, through reference in this text, constitute provisions of the present document.

- References are either specific (identified by date of publication, edition number, version number, etc.) or non-specific.
- For a specific reference, subsequent revisions do not apply.
- For a non-specific reference, the latest version applies. In the case of a reference to a 3GPP document (including a GSM document), a non-specific reference implicitly refers to the latest version of that document *in the same Release as the present document*.

- [1] 3GPP TS 43.020: "Security related Network Functions".
- [2] 3GPP TS 48.008: " Mobile-services Switching Centre - Base Station System (MSC - BSS) interface Layer 3 specification".
- [3] GSM 12.08: "Digital cellular telecommunications system (Phase 2+); Subscriber and Equipment trace".
- [4] 3GPP TR 21.905: "Vocabulary for 3GPP Specifications".
- [5] 3GPP TS 23.003: "Numbering, Addressing and Identification".
- [6] 3GPP TS 23.012: "Location Management Procedures".
- [7] 3GPP TS 23.032: "Universal Geographical Area Description (GAD)".
- [8] 3GPP TS 23.054: "Shared Inter Working Function (SIWF) - Stage 2".
- [9] 3GPP TS 23.060: "General Packet Radio Service; Service description; Stage 2".
- [10] 3GPP TS 23.066: "Support of Mobile Number Portability (MNP); Technical Realisation – Stage 2".
- [11] 3GPP TS 23.072: "Call Deflection (CD) supplementary service; Stage2".
- [12] 3GPP TS 23.078: "Customized Applications for Mobile network Enhanced Logic (CAMEL) - Phase 3; Stage 2".
- [13] 3GPP TS 23.079: "Support of Optimal Routeing (SOR); Technical Realisation".
- [14] 3GPP TS 23.081: "Line identification Supplementary Services - Stage 2".
- [15] 3GPP TS 23.082: "Call Forwarding (CF) Supplementary Services - Stage 2".
- [16] 3GPP TS 23.083: "Call Waiting (CW) and Call Hold (HOLD) Supplementary Services - Stage 2".
- [17] 3GPP TS 23.084: "Multi Party (MPTY) Supplementary Service - Stage 2".
- [18] 3GPP TS 23.085: "Closed User Group (CUG) Supplementary Service - Stage 2".
- [19] 3GPP TS 23.086: "Advice of Charge (AoC) Supplementary Service - Stage 2".
- [20] 3GPP TS 23.087: "User –to-User Signalling (UUS) Supplementary Service - Stage 2".
- [21] 3GPP TS 23.088: "Call Barring (CB) Supplementary Service - Stage 2".
- [22] 3GPP TS 23.091: "Explicit Call Transfer (ECT) supplementary service - Stage 2".

- [23] 3GPP TS 23.093: "Technical realisation of Completion of Calls to Busy Subscriber (CCBS) - Stage 2".
- [24] 3GPP TS 23.116: "Super-Charger Technical Realisation; Stage 2".
- [25] 3GPP TS 23.135: "Multicall supplementary service; Stage 2".
- [\[25a\] 3GPP TS 23.195: "Provision of UE Specific Behaviour Information to Network Entities".](#)
- [26] 3GPP TS 24.008: "Mobile Radio Interface Layer 3 specification; Core Network Protocols; Stage 3".
- [27] 3GPP TS 25.413: "UTRAN Iu Interface RANAP Signalling".
- [28] 3GPP TS 27.001: "General on Terminal Adaptation Functions (TAF) for Mobile Stations (MS)".
- [29] 3GPP TS 29.002: "Mobile Application Part (MAP) specification".
- [30] 3GPP TS 29.007: "General requirements on interworking between the Public Land Mobile Network (PLMN) and the Integrated Services Digital Network (ISDN) or Public Switched Telephone Network (PSTN)".
- [31] 3GPP TS 29.010: "Information Element Mapping between Mobile Station - Base Station System (MS - BSS) and Base Station System - Mobile-services Switching Centre (BSS - MSC) Signalling Procedures and the Mobile Application Part (MAP)".
- [32] 3GPP TS 33.102: "3G Security; Security Architecture".
- [33] ITU-T Recommendation Q.761 (1999): "Signalling System No. 7 - ISDN User Part functional description".
- [34] ITU-T Recommendation Q.762 (1999): "Signalling System No. 7 - ISDN User Part general functions of messages and signals".
- [35] ITU-T Recommendation Q.763 (1999): "Signalling System No. 7 - ISDN User Part formats and codes".
- [36] ITU-T Recommendation Q.764 (1999): "Signalling System No. 7 - ISDN user part signalling procedures".
- [37] ITU-T Recommendation Q.850 (1996): "Usage of cause and location in the Digital Subscriber Signalling System No. 1 and the Signalling System No. 7 ISDN User Part".

***** Next modified section *****

7.1.2 Functional requirements of VLR

7.1.2.1 Process OCH_VLR

7.1.2.2 Procedure Process_Access_Request_VLR

Sheet 1: the processing consisting of the test "IMEISV stored", the call on the procedure "Obtain IMEI_VLR" and the test "Result=Pass?" is specific to "Early UE" handling. If the VLR does not support "Early UE" handling, the processing starts with the test "Identity known?"

Sheet 1: the task "Convert IMEISV to UESBI" is defined in detail in 3GPP TS 23.195 [25a].

Sheet 1: it is a network operator decision (subject to MoU requirements) how often an MS should be authenticated.

Sheet 2: the process Subscriber_Present_VLR is described in 3GPP TS 29.002 [29].

Sheet 2: it is a network operator decision (subject to MoU requirements) whether a GSM connection should be ciphered. A UMTS connection shall always be ciphered.

Sheet 3: it is a network operator decision (subject to MoU requirements) how often an IMEI should be checked.

Sheet 3, sheet 4, sheet 5: the procedure CCBS_Report_MS_Activity is specific to CCBS; it is specified in 3GPP TS 23.093 [23].

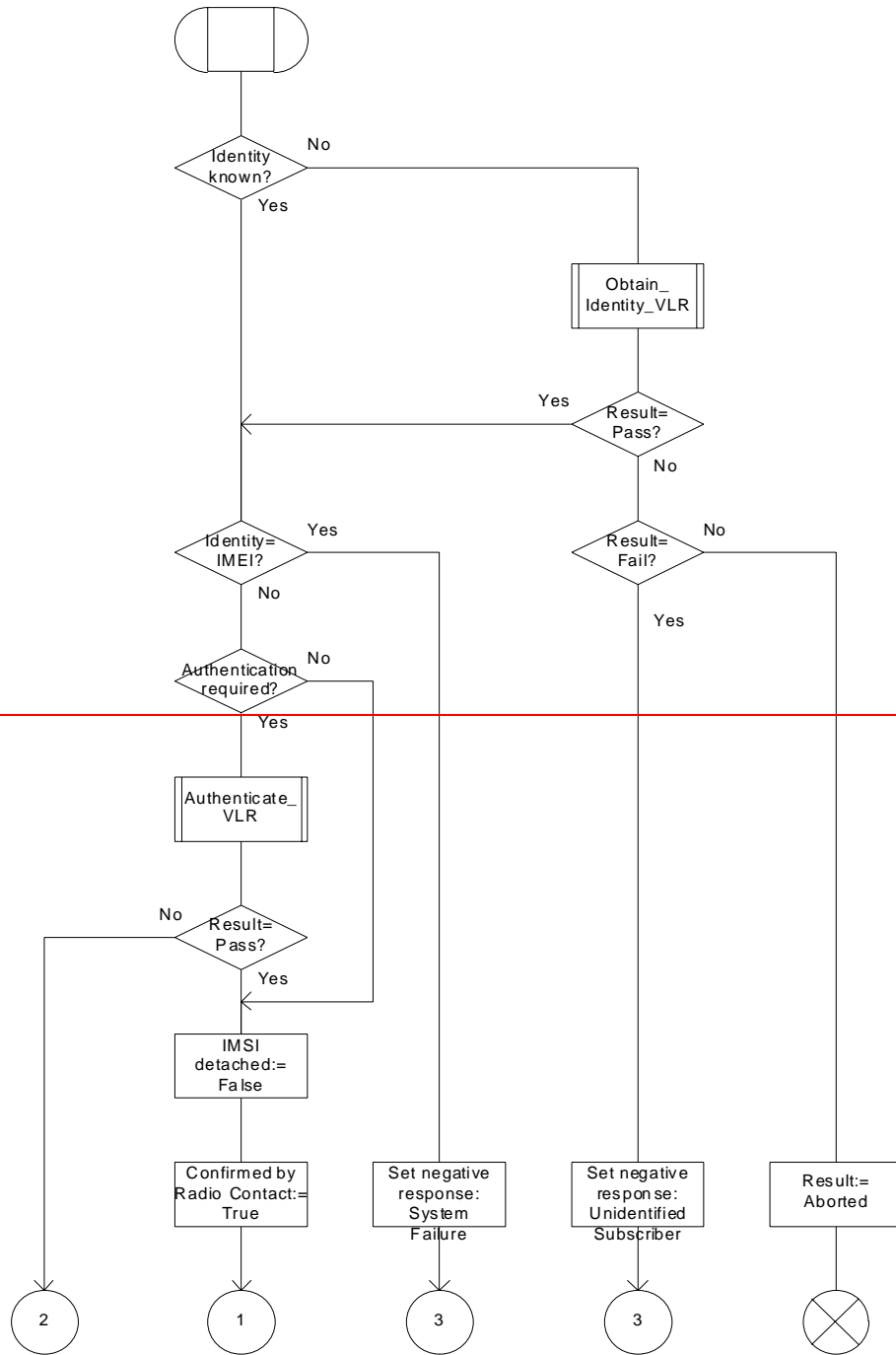
Sheet 5: it is a network operator decision whether emergency calls are allowed from an ME with no SIM.

***** Next modified section *****

Procedure Process_Access_Request_VLR

PAR_VLR1(5)

Procedure in the VLR to handle a request from the MS for system access



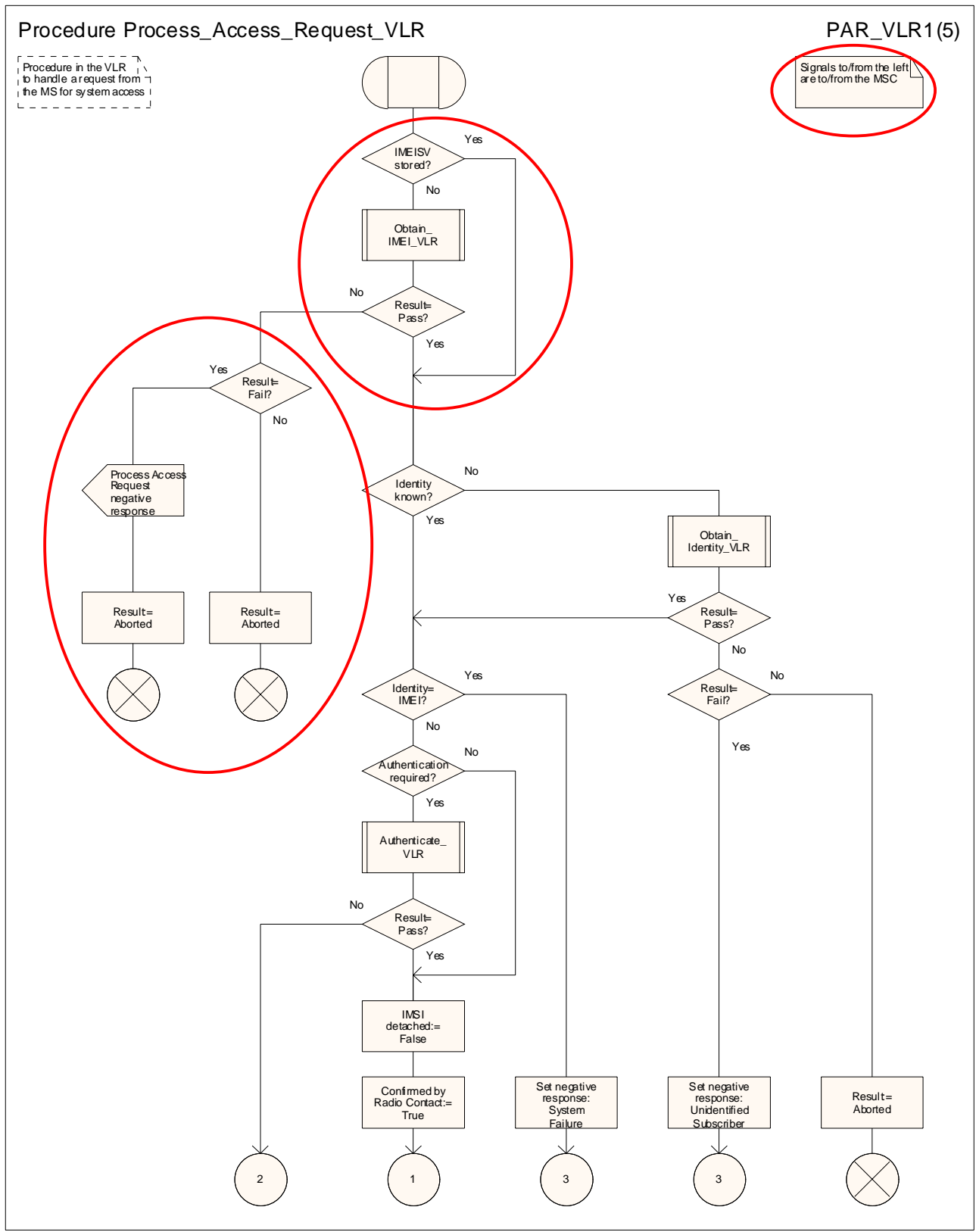


Figure 7.1.2.2a: Procedure Process_Access_Request_VLR (sheet 1)

*** End of document ***