

Source: TSG CN WG 1
Title: CR to R99 (with mirror CR) on Work Item GSM/UMTS interworking towards 23.009
Agenda item: 7.15
Document for: APPROVAL

Introduction:

This document contains a CR on **R99 (with mirror CR)** to Work Item " **GSM/UMTS interworking**", that has been agreed by **TSG CN WG1**, and is forwarded to TSG CN Plenary meeting #14 for approval.

Spec	CR	Rev	Phase	Subject	Cat	Version-Current	Version-New	Doc-2nd-Level
23.009	062	1	R99	GSM to UMTS Handover: lu-LOCATION-REPORTING message reception	F	3.8.0	3.9.0	N1-012026
23.009	063	2	Rel-4	GSM to UMTS Handover: lu-LOCATION-REPORTING message reception	A	4.2.0	4.3.0	N1-012027

3GPP TSG-CN1 Meeting #21
 Cancun, Mexico, 26.- 30. November 2001

Tdoc N1-012026

CR-Form-v4
CHANGE REQUEST
⌘ 23.009 CR 062 ⌘ ev 1 ⌘ Current version: 3.8.0 ⌘

For **HELP** on using this form, see bottom of this page or look at the pop-up text over the ⌘ symbols.

Proposed change affects: ⌘ (U)SIM ME/UE Radio Access Network Core Network

Title:	⌘	GSM to UMTS Handover: lu-LOCATION-REPORTING message reception	
Source:	⌘	Nokia	
Work item code:	⌘	GSM/UMTS Interworking	Date: ⌘ 29.11.01
Category:	⌘	F	Release: ⌘ R99
		Use <u>one</u> of the following categories: F (correction) A (corresponds to a correction in an earlier release) B (addition of feature), C (functional modification of feature) D (editorial modification) Detailed explanations of the above categories can be found in 3GPP TR 21.900.	Use <u>one</u> of the following releases: 2 (GSM Phase 2) R96 (Release 1996) R97 (Release 1997) R98 (Release 1998) R99 (Release 1999) REL-4 (Release 4) REL-5 (Release 5)

Reason for change:	⌘	SDLs introduced in Tdoc N1-011111 to the procedure '3G_MSC_B_HO' introduced a mistake on the logical entities involved in the lu-LOCATION-REPORT procedure, in sheets 2 and 32 of figure 44. RNS-A is the RNS from which the MS is being handed over. RNS-B is the RNS to which the MS is being handed over. This means that RNS-B is the target RNS for the handover, the IU-LOCATION-REPORT-CONTROL message is sent <u>to</u> the target RNS. The IU-LOCATION-REPORT message is received from the RNS which is serving the MS, that is <u>RNS</u> . In addition to that the rest of the SDLs of the specification have been revised and other wrong wording corrected as explained in Summary of change.
Summary of change:	⌘	Change of RNS-A to RNS on Sheets 32 and 24, and RNS-A to RNS-B on sheet 2 and BSS-A to BSS on sheet 6 on figure 44 (Procedure 3G_MSC_B_HO). Change of BSS-A to BSS on sheet 6 in figure 42 (procedure MSC_B_HO).
Consequences if not approved:	⌘	SDL mismatch with text.

Clauses affected:	⌘	Fig. 44 (sheets 2, 6, 24 and 32 of 54) and fig 42 sheet 6.
Other specs Affected:	⌘	<input type="checkbox"/> Other core specifications <input type="checkbox"/> Test specifications <input type="checkbox"/> O&M Specifications
Other comments:	⌘	

How to create CRs using this form:

Comprehensive information and tips about how to create CRs can be found at: http://www.3gpp.org/3G_Specs/CRs.htm. Below is a brief summary:

- 1) Fill out the above form. The symbols above marked ⌘ contain pop-up help information about the field that they are closest to.
- 2) Obtain the latest version for the release of the specification to which the change is proposed. Use the MS Word "revision marks" feature (also known as "track changes") when making the changes. All 3GPP specifications can be downloaded from the 3GPP server under <ftp://ftp.3gpp.org/specs/>. For the latest version, look for the directory name with the latest date e.g. 2001-03 contains the specifications resulting from the March 2001 TSG meetings.
- 3) With "track changes" disabled, paste the entire CR form (use CTRL-A to select it) into the specification just in front of the clause containing the first piece of changed text. Delete those parts of the specification which are not relevant to the change request.

Procedure MSC_B_HO

Sheet6(18)

Procedures for Handover in MSC-B

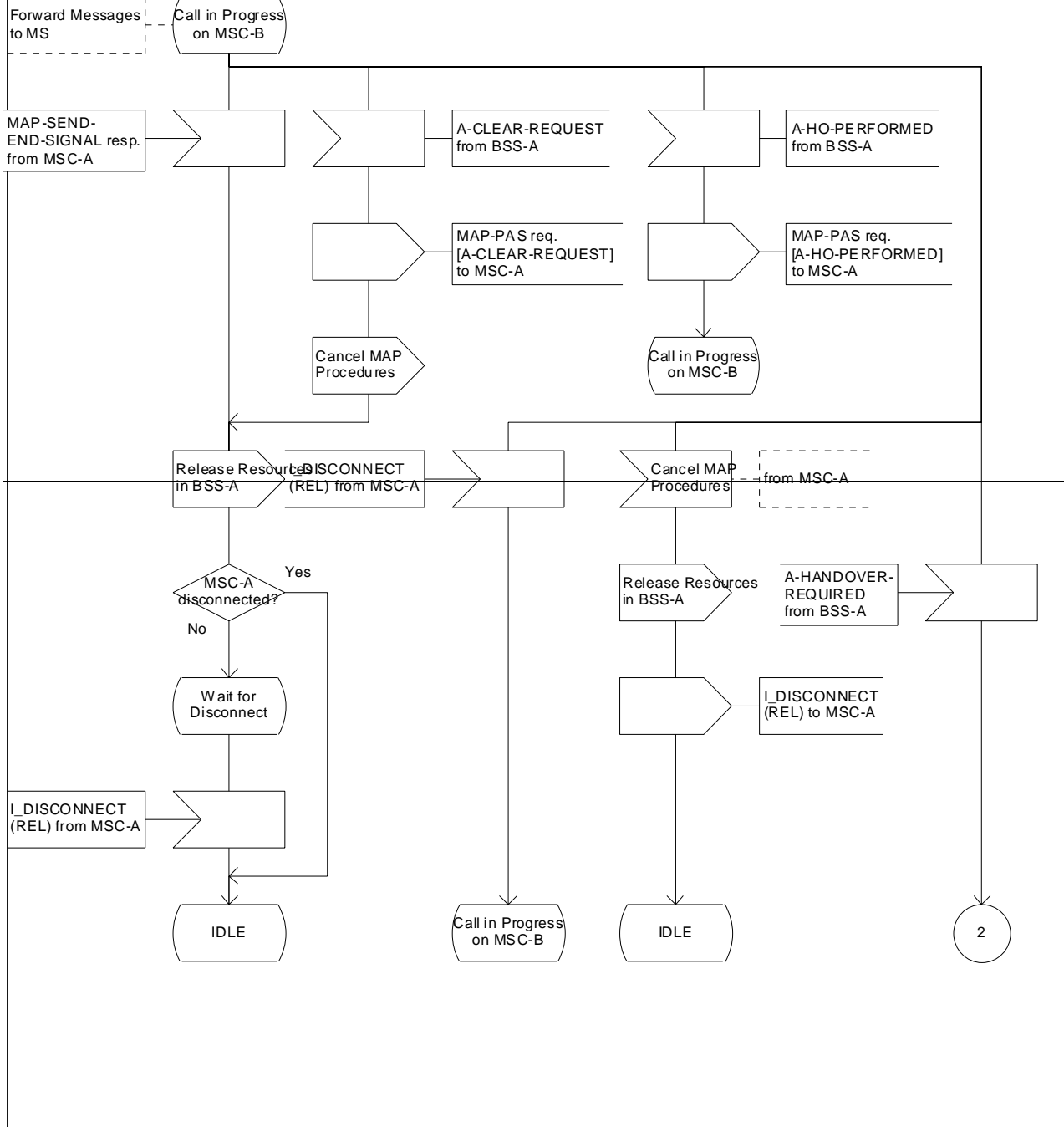


Figure 42 (Sheet 6 of 18): Handover control procedure in MSC-B

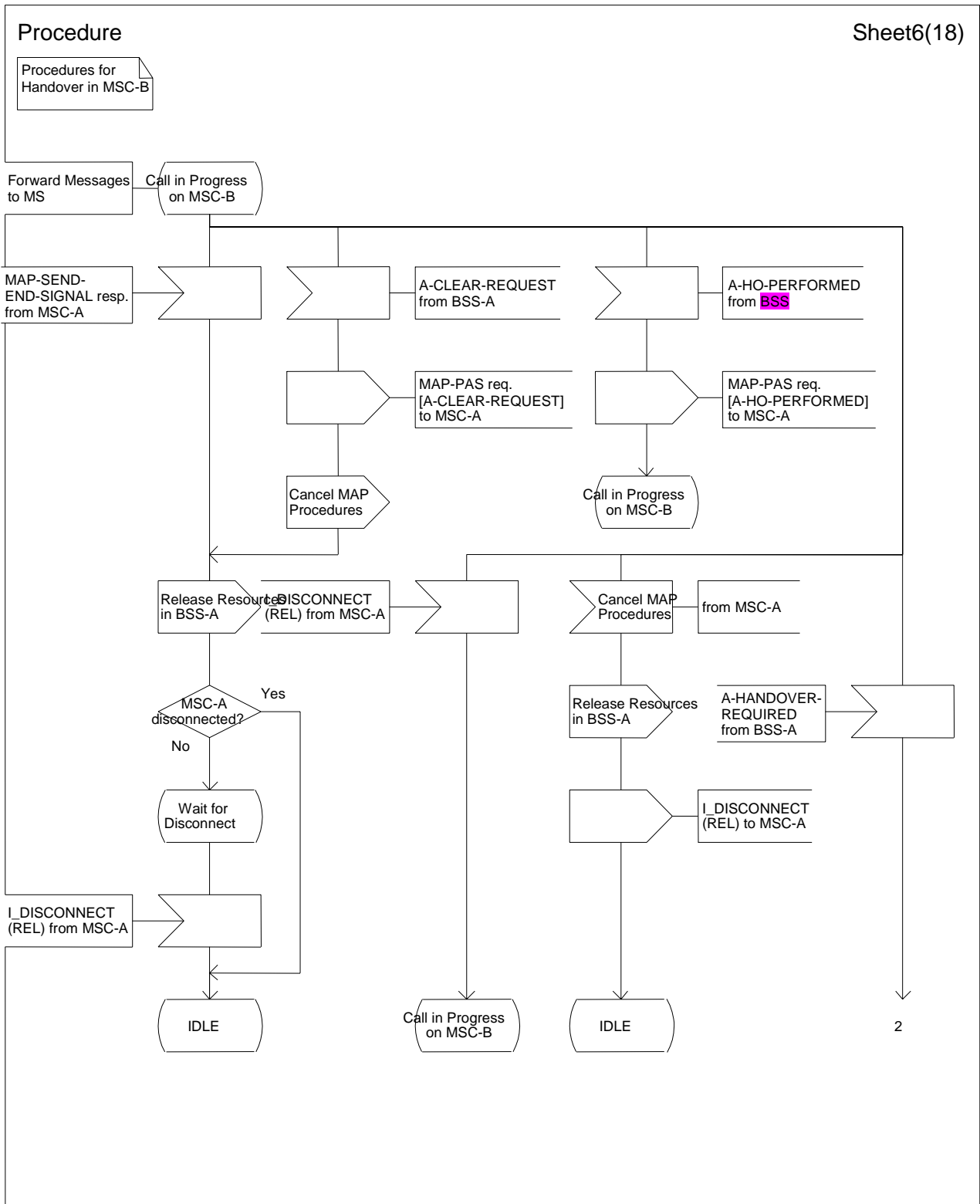


Figure 42 (Sheet 6 of 18): Handover control procedure in MSC-B

Procedure 3G_MSC_B_HO

Sheet2(54)

Procedures for Handover in 3G_MSC-B

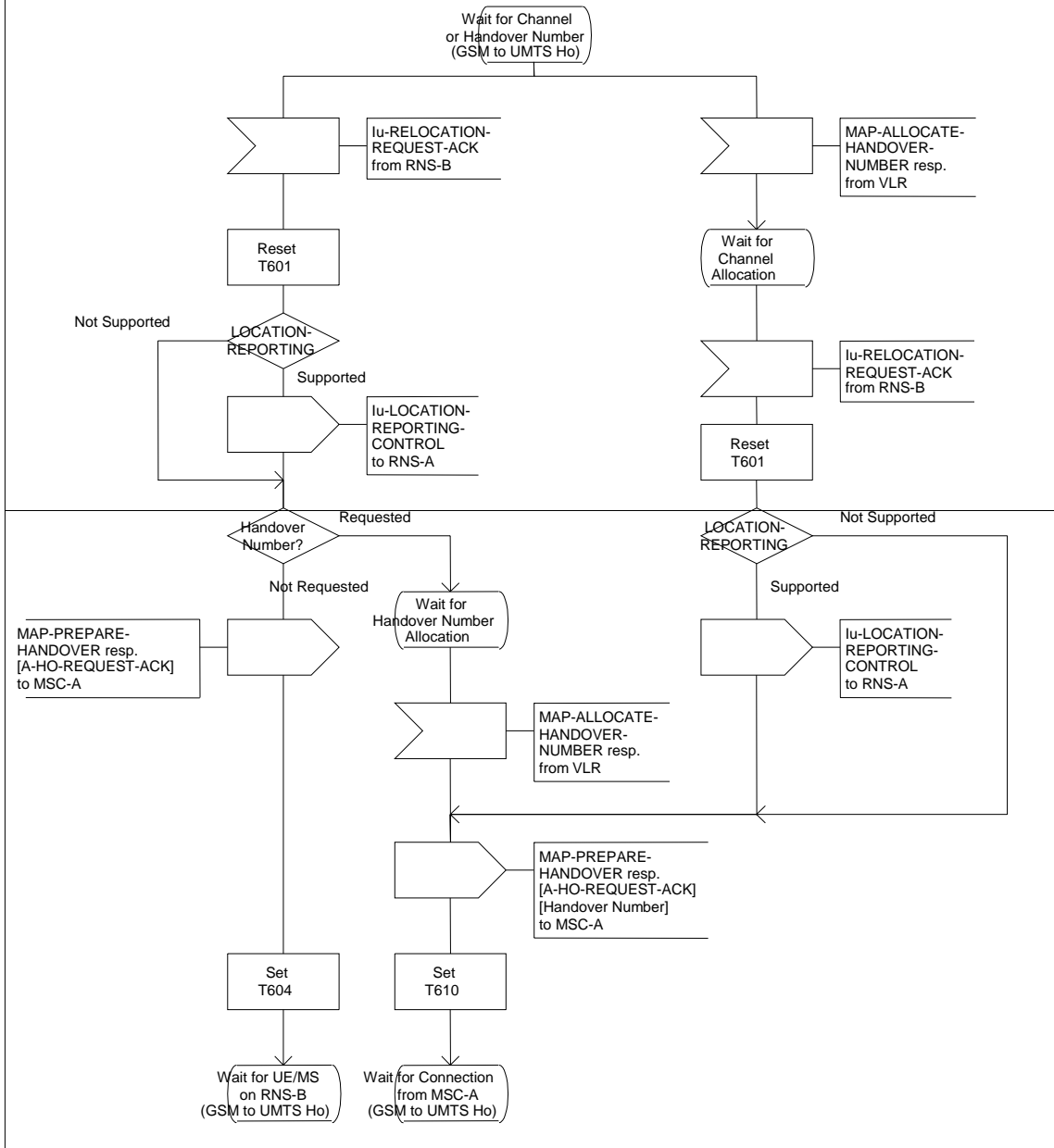


Figure 44 (sheet 2 of 54): Handover control procedure in 3G_MSC-B

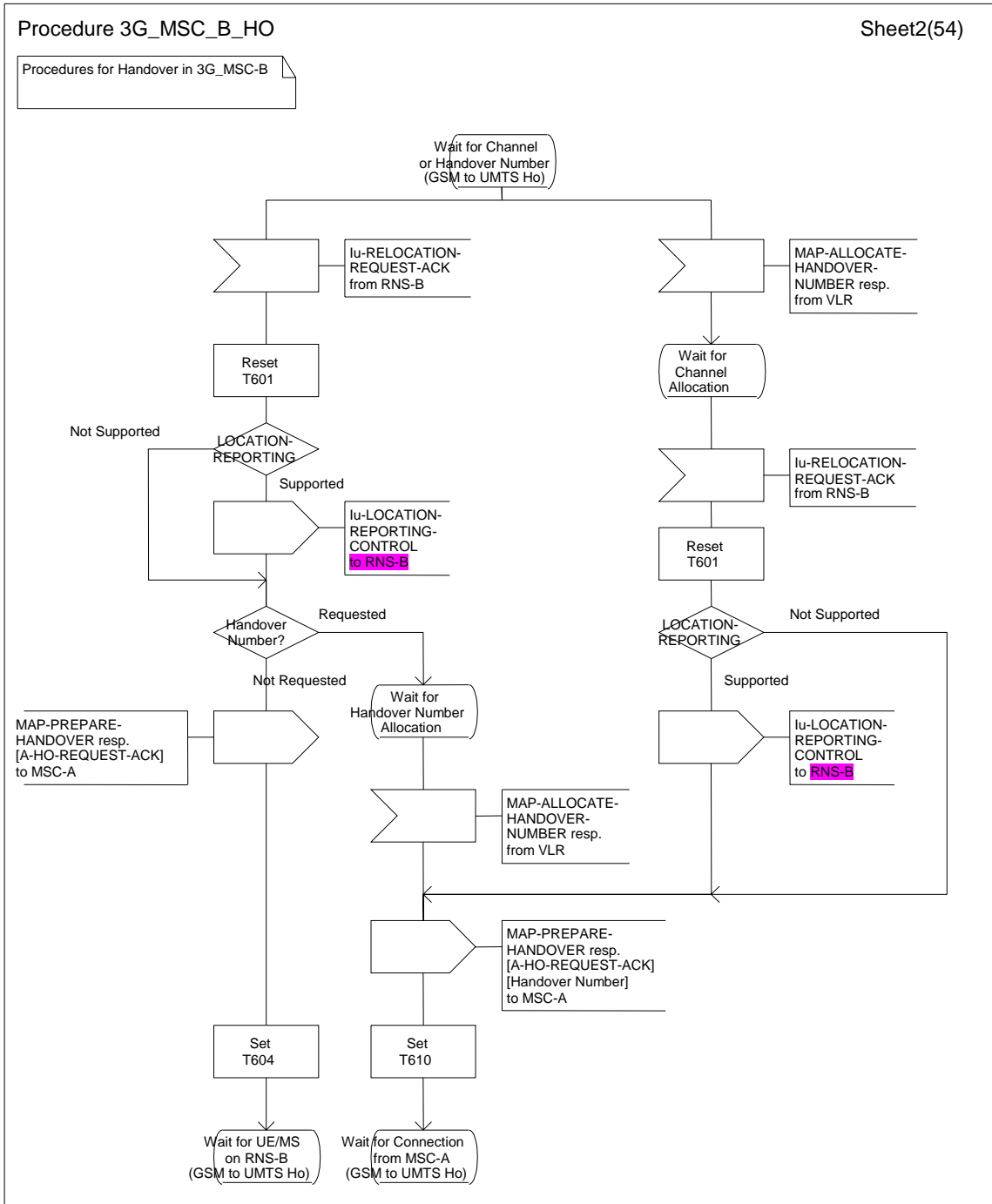


Figure 44 (sheet 2 of 54): Handover control procedure in 3G_MSC-B

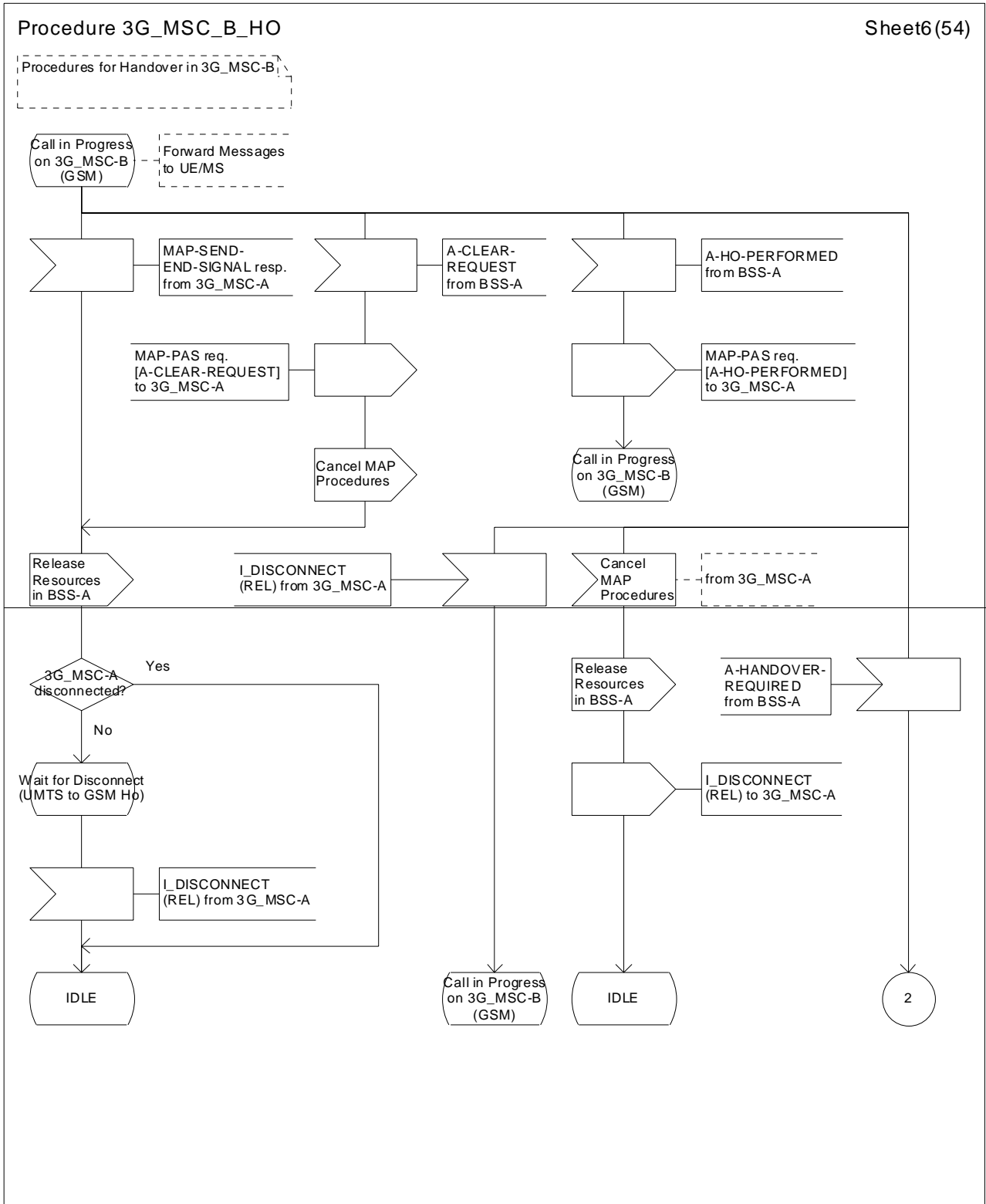


Figure 44 (sheet 6 of 54): Handover control procedure in 3G_MSC-B

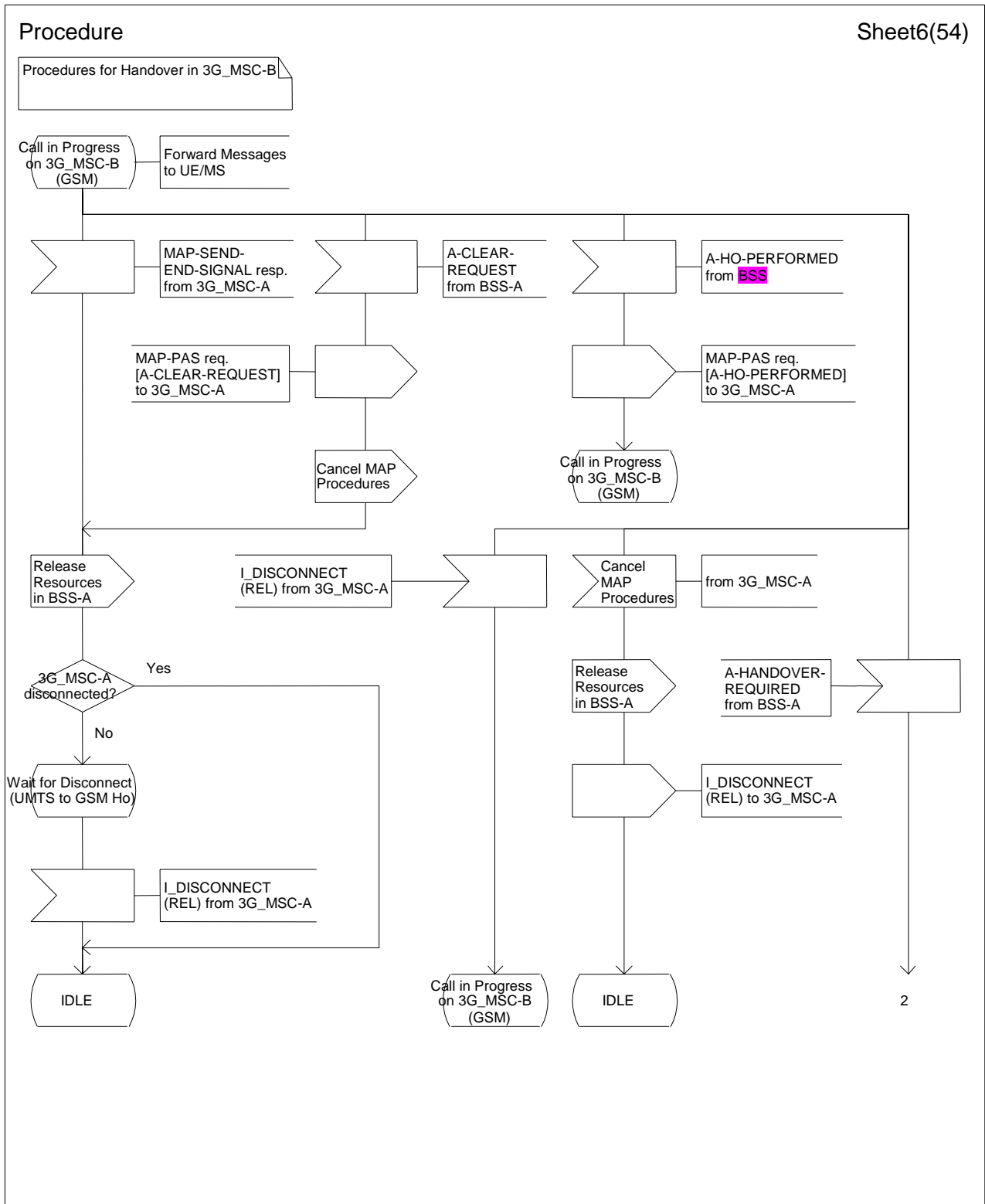


Figure 44 (sheet 6 of 54): Handover control procedure in 3G_MSC-B

Procedure 3G_MSC_B_HO

Sheet24(54)

Procedures for Handover in 3G_MSC-B

Call in Progress on 3G_MSC-B (UTRAN)

Forward Messages to UE/MS

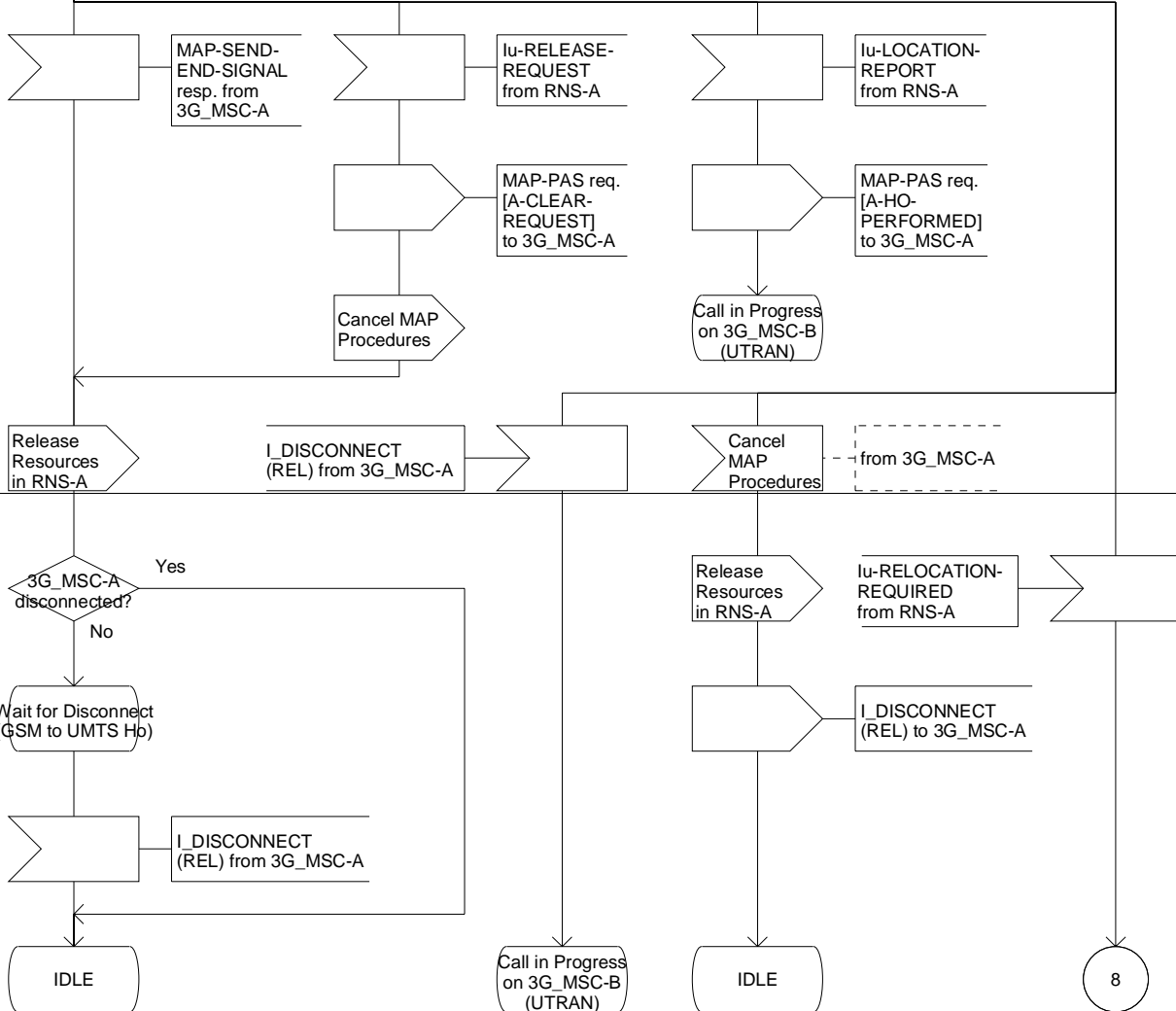


Figure 44 (sheet 24 of 54): Handover control procedure in 3G_MSC-B

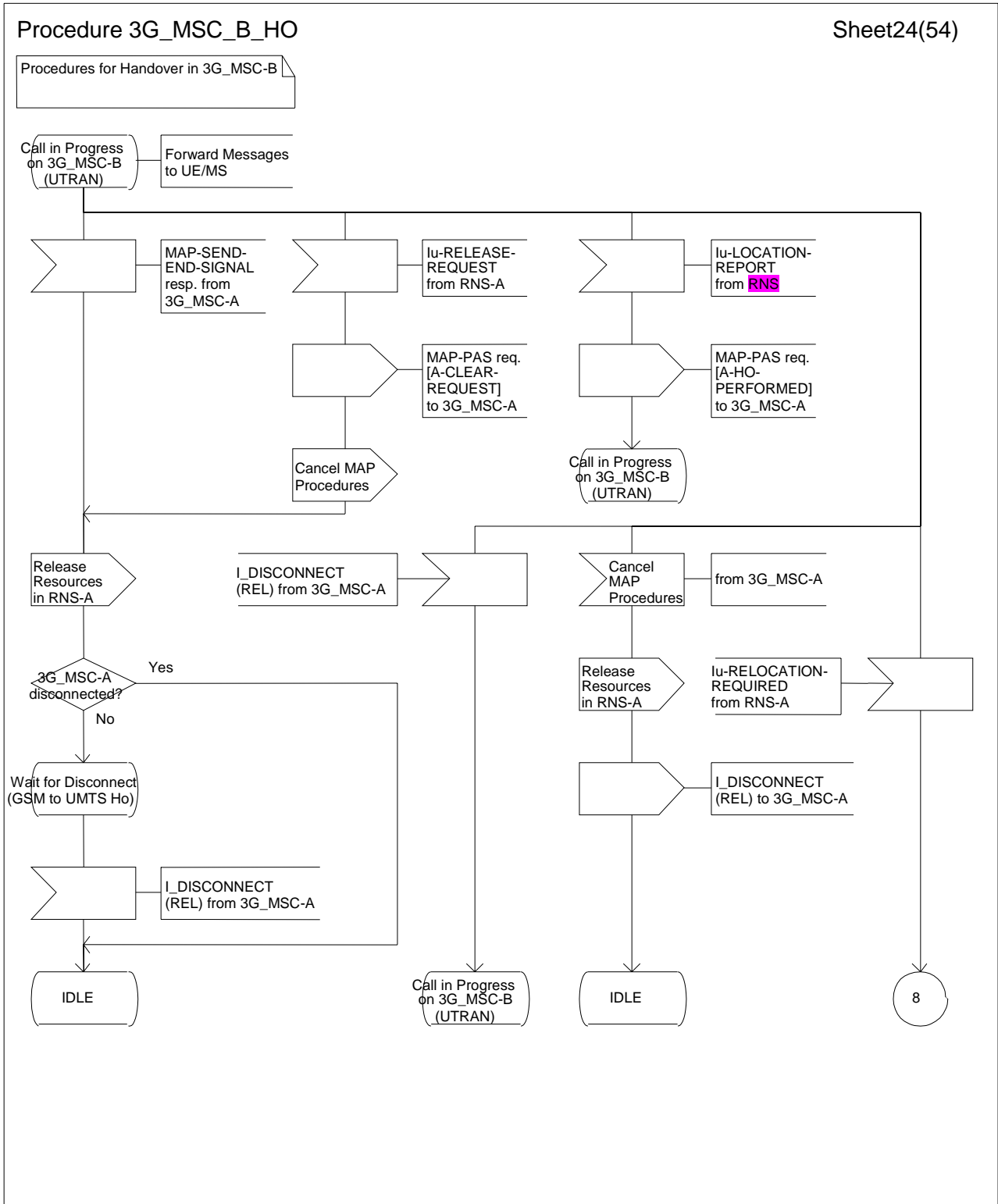


Figure 44 (sheet 24 of 54): Handover control procedure in 3G_MSC-B

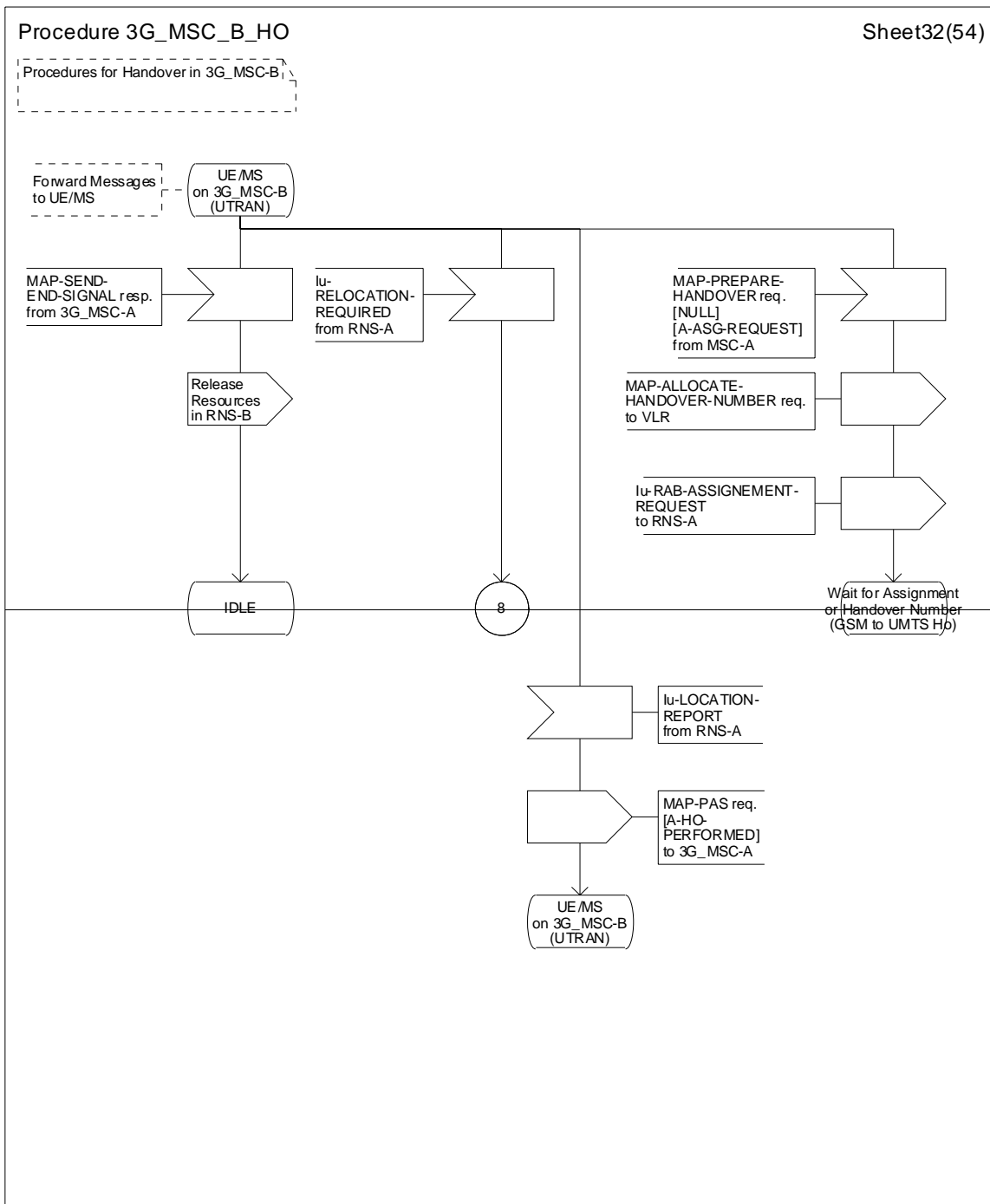
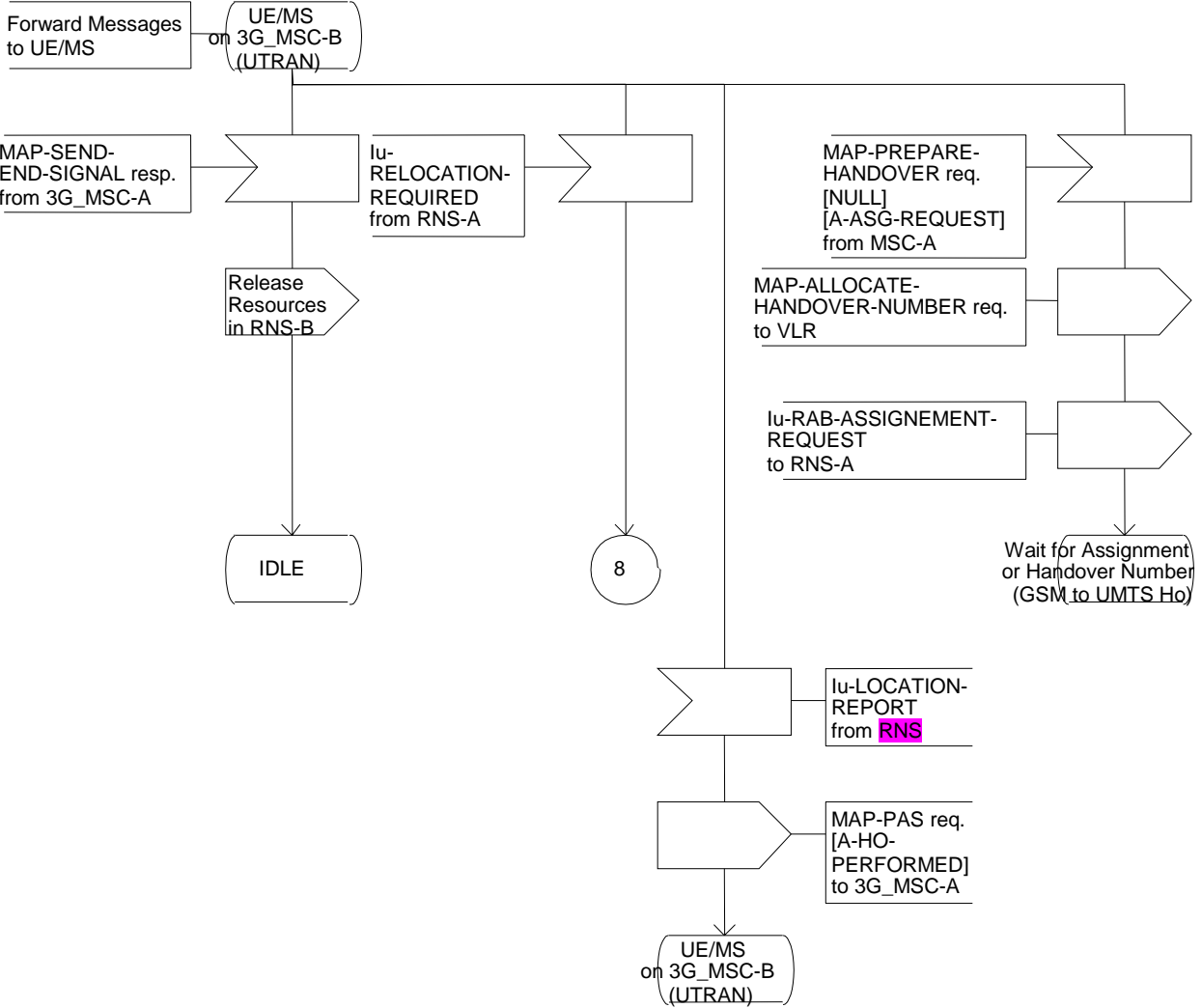


Figure 44 (sheet 32 of 54): Handover control procedure in 3G_MSC-B

Procedure 3G_MSC_B_HO

Sheet32(54)

Procedures for Handover in 3G_MSC-B



3GPP TSG-CN1 Meeting #21
 Cancun, Mexico, 26.- 30. November 2001

Tdoc N1-012027

CR-Form-v4

CHANGE REQUEST

⌘ **23.009 CR 063** ⌘ ev **2** ⌘ Current version: **4.2.0** ⌘

For **HELP** on using this form, see bottom of this page or look at the pop-up text over the ⌘ symbols.

Proposed change affects: ⌘ (U)SIM ME/UE Radio Access Network Core Network

Title:	⌘ GSM to UMTS Handover: lu-LOCATION-REPORTING message reception		
Source:	⌘ Nokia		
Work item code:	⌘ GSM/UMTS Interworking	Date:	⌘ 29.11.01
Category:	⌘ A	Release:	⌘ Rel-4
	Use <u>one</u> of the following categories:		Use <u>one</u> of the following releases:
	F (correction)		2 (GSM Phase 2)
	A (corresponds to a correction in an earlier release)		R96 (Release 1996)
	B (addition of feature),		R97 (Release 1997)
	C (functional modification of feature)		R98 (Release 1998)
	D (editorial modification)		R99 (Release 1999)
	Detailed explanations of the above categories can be found in 3GPP TR 21.900 .		REL-4 (Release 4)
			REL-5 (Release 5)

Reason for change:	⌘ SDLs introduced in Tdoc N1-011111 to the procedure '3G_MSC_B_HO' introduced a mistake on the logical entities involved in the lu-LOCATION-REPORT procedure, in sheets 2 and 32 of figure 44.
	<u>RNS-A</u> is the RNS from which the MS is being handed over.
	<u>RNS-B</u> is the RNS to which the MS is being handed over.
	This means that RNS-B is the target RNS for the handover, the IU-LOCATION-REPORT-CONTROL message is sent <u>to</u> the target RNS.
	The IU-LOCATION-REPORT message is received from the RNS which is serving the MS, that is <u>RNS</u> .
	In addition to that the rest of the SDLs of the specification have been revised and other wrong wording corrected as explained in Summary of change.
Summary of change:	⌘ Change of RNS-A to RNS on Sheets 32 and 24, and RNS-A to RNS-B on sheet 2 and BSS-A to BSS on sheet 6 on figure 44 (Procedure 3G_MSC_B_HO). Change of BSS-A to BSS on sheet 6 in figure 42 (procedure MSC_B_HO).
Consequences if not approved:	⌘ SDL mismatch with text.

Clauses affected:	⌘ Fig. 44 (sheets 2, 6, 24 and 32 of 54) and fig 42 sheet 6.		
Other specs Affected:	⌘ <input type="checkbox"/> Other core specifications	⌘	
	<input type="checkbox"/> Test specifications		
	<input type="checkbox"/> O&M Specifications		
Other comments:	⌘		

How to create CRs using this form:

Comprehensive information and tips about how to create CRs can be found at: http://www.3gpp.org/3G_Specs/CRs.htm. Below is a brief summary:

- 1) Fill out the above form. The symbols above marked ☞ contain pop-up help information about the field that they are closest to.
- 2) Obtain the latest version for the release of the specification to which the change is proposed. Use the MS Word "revision marks" feature (also known as "track changes") when making the changes. All 3GPP specifications can be downloaded from the 3GPP server under <ftp://ftp.3gpp.org/specs/>. For the latest version, look for the directory name with the latest date e.g. 2001-03 contains the specifications resulting from the March 2001 TSG meetings.
- 3) With "track changes" disabled, paste the entire CR form (use CTRL-A to select it) into the specification just in front of the clause containing the first piece of changed text. Delete those parts of the specification which are not relevant to the change request.

Procedure MSC_B_HO

Sheet6(18)

Procedures for Handover in MSC-B

Forward Messages to MS

MAP-SEND-END-SIGNAL resp. from MSC-A

Call in Progress on MSC-B

A-CLEAR-REQUEST from BSS-A

A-HO-PERFORMED from BSS-A

MAP-PAS req. [A-CLEAR-REQUEST] to MSC-A

MAP-PAS req. [A-HO-PERFORMED] to MSC-A

Cancel MAP Procedures

Call in Progress on MSC-B

Release Resources in BSS-A

I-CONNECT (REL) from MSC-A

Cancel MAP Procedures

from MSC-A

MSC-A disconnected?

Yes

No

Wait for Disconnect

Release Resources in BSS-A

A-HANDOVER-REQUIRED from BSS-A

I-DISCONNECT (REL) to MSC-A

I-DISCONNECT (REL) from MSC-A

IDLE

Call in Progress on MSC-B

IDLE

2

Figure 42 (Sheet 6 of 18): Handover control procedure in MSC-B

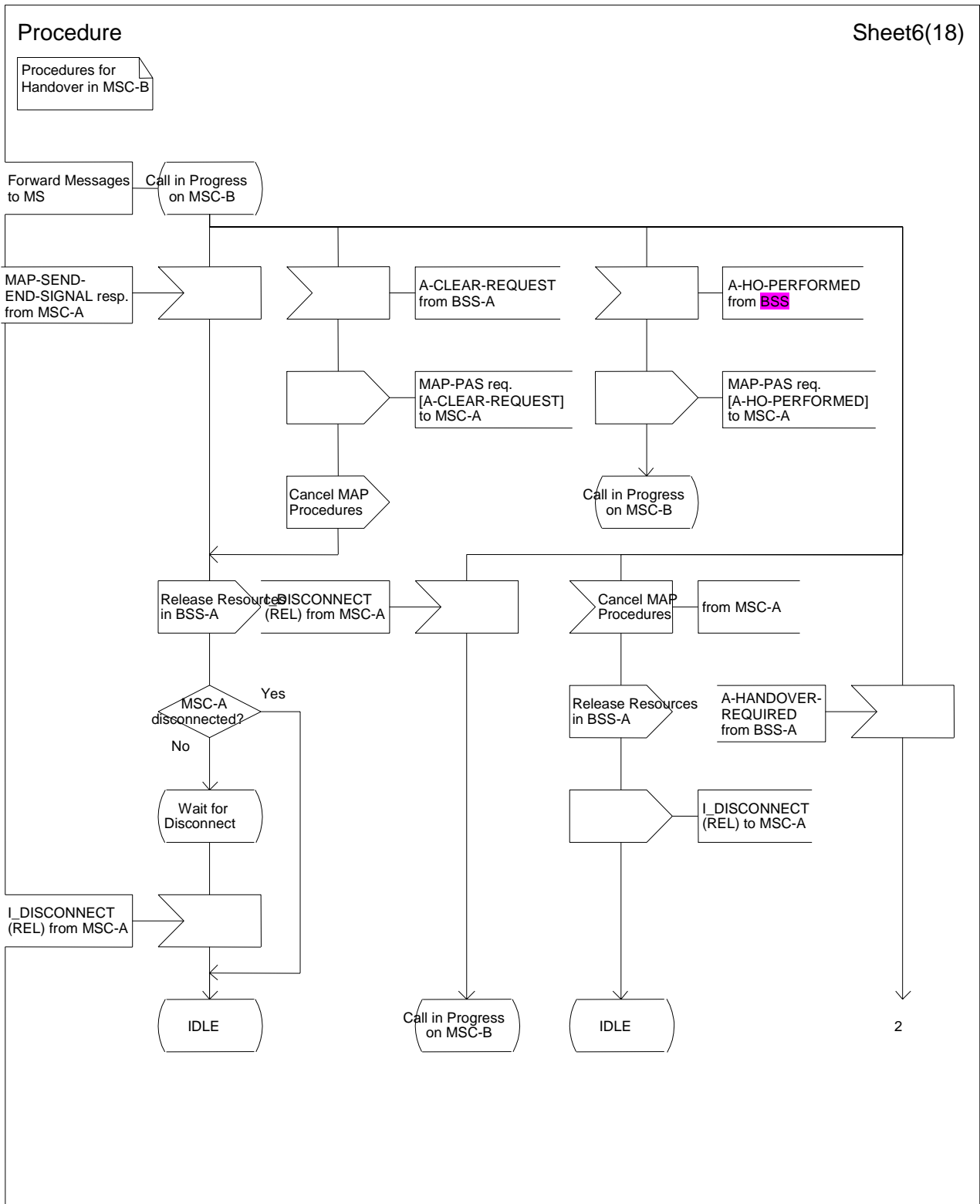


Figure 42 (Sheet 6 of 18): Handover control procedure in MSC-B

Procedure 3G_MSC_B_HO

Sheet2(54)

Procedures for Handover in 3G_MSC-B

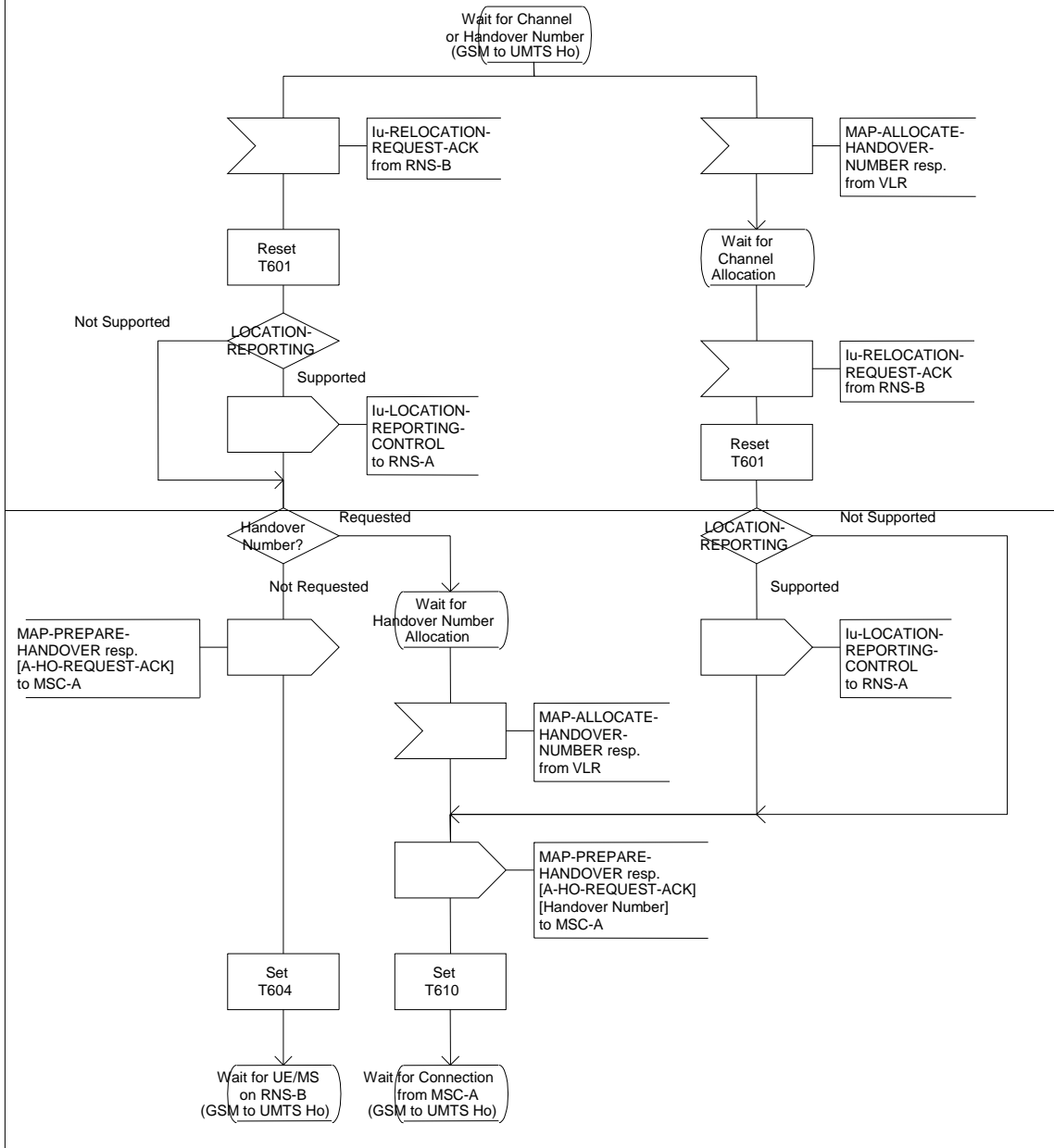


Figure 44 (sheet 2 of 54): Handover control procedure in 3G_MSC-B

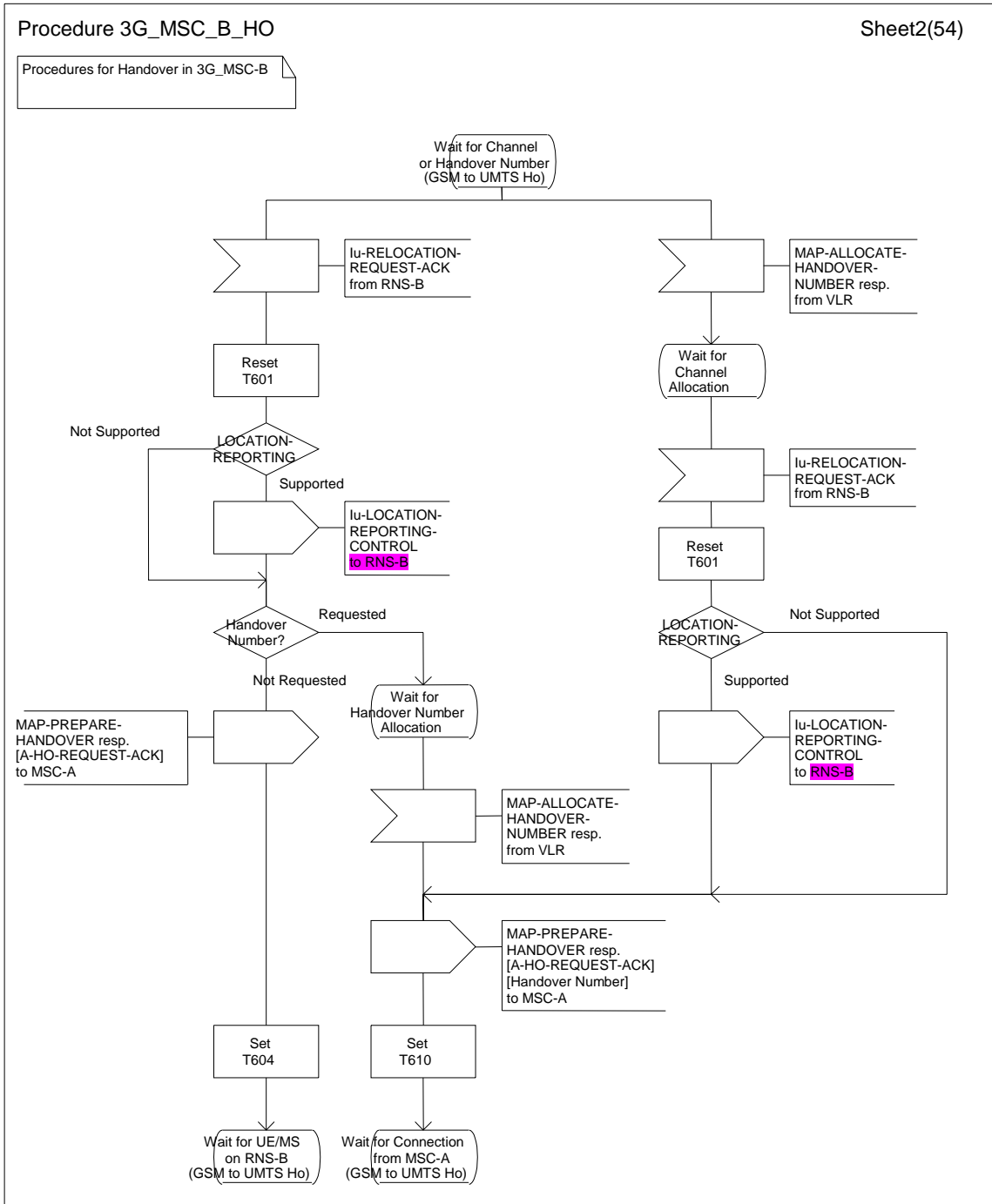


Figure 44 (sheet 2 of 54): Handover control procedure in 3G_MSC-B

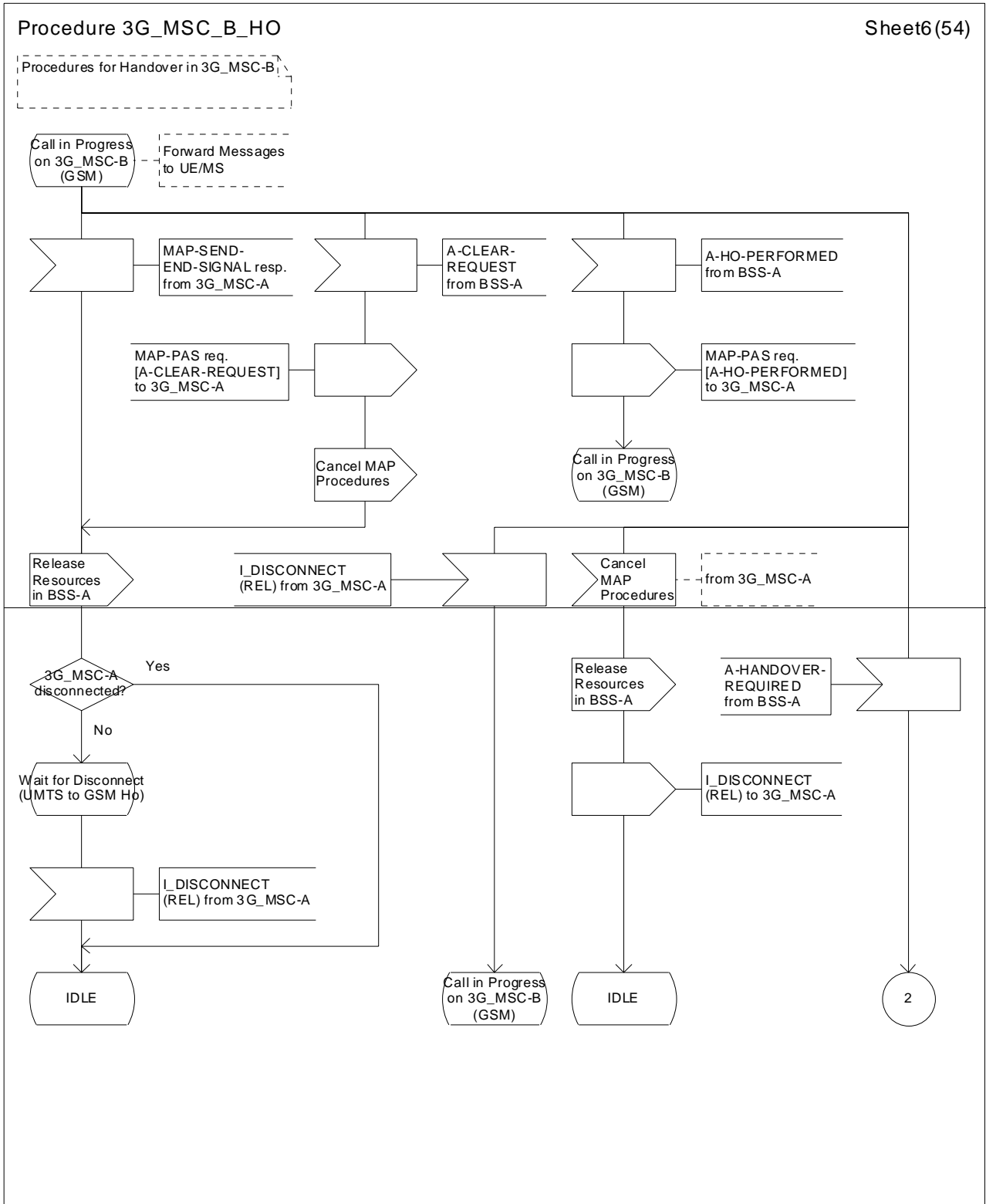


Figure 44 (sheet 6 of 54): Handover control procedure in 3G_MSC-B

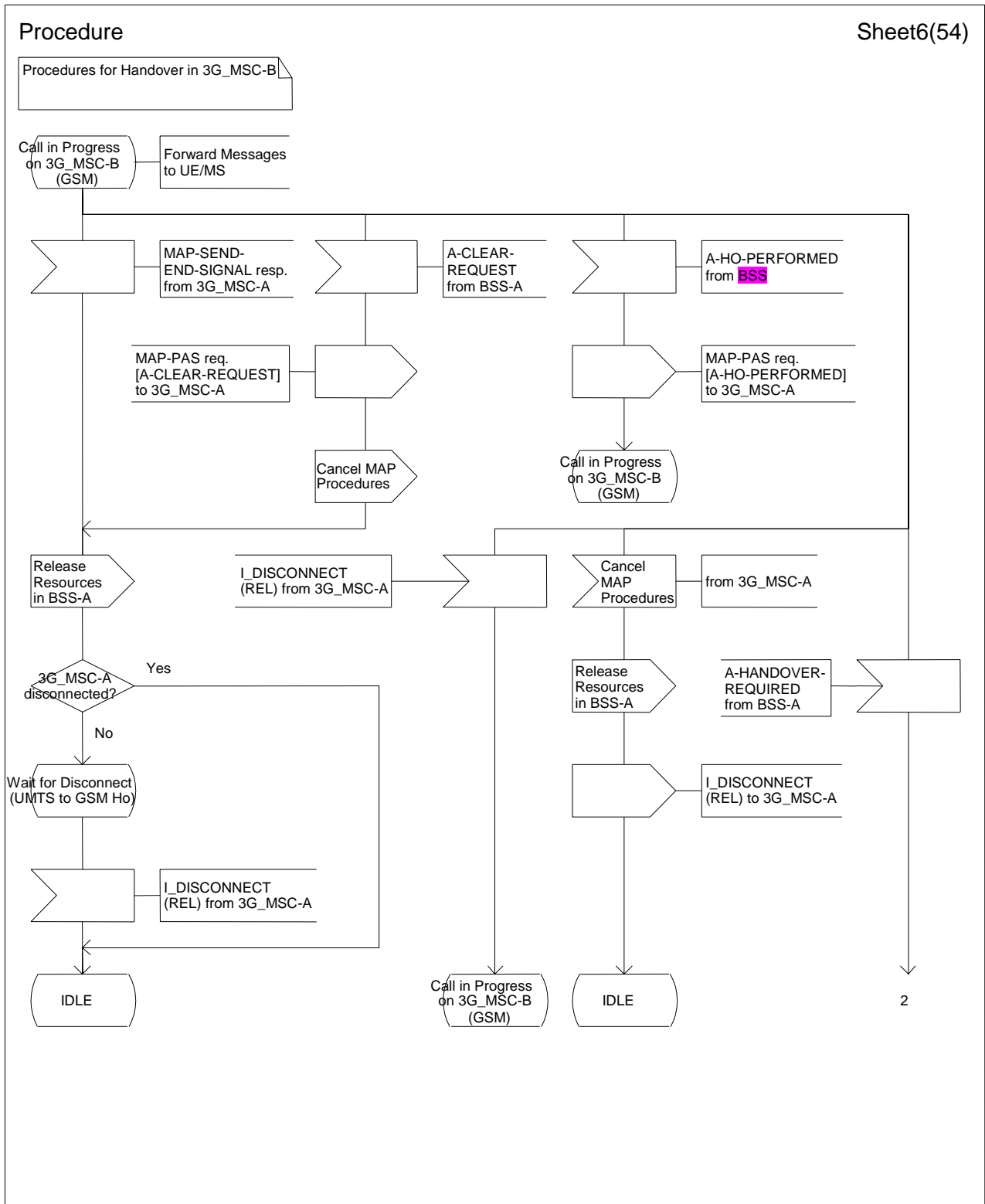


Figure 44 (sheet 6 of 54): Handover control procedure in 3G_MSC-B

Procedure 3G_MSC_B_HO

Sheet24(54)

Procedures for Handover in 3G_MSC-B:

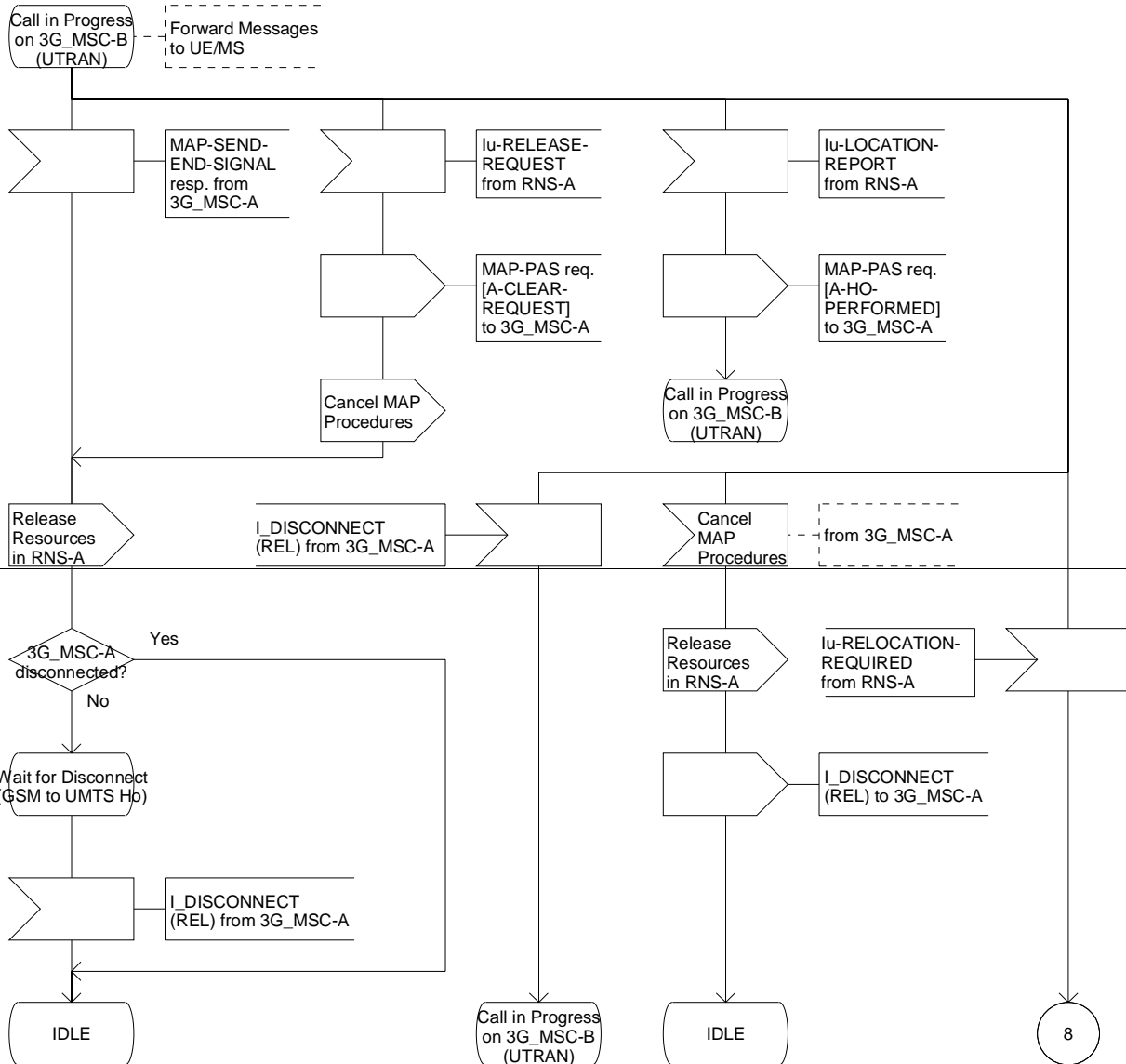


Figure 44 (sheet 24 of 54): Handover control procedure in 3G_MSC-B

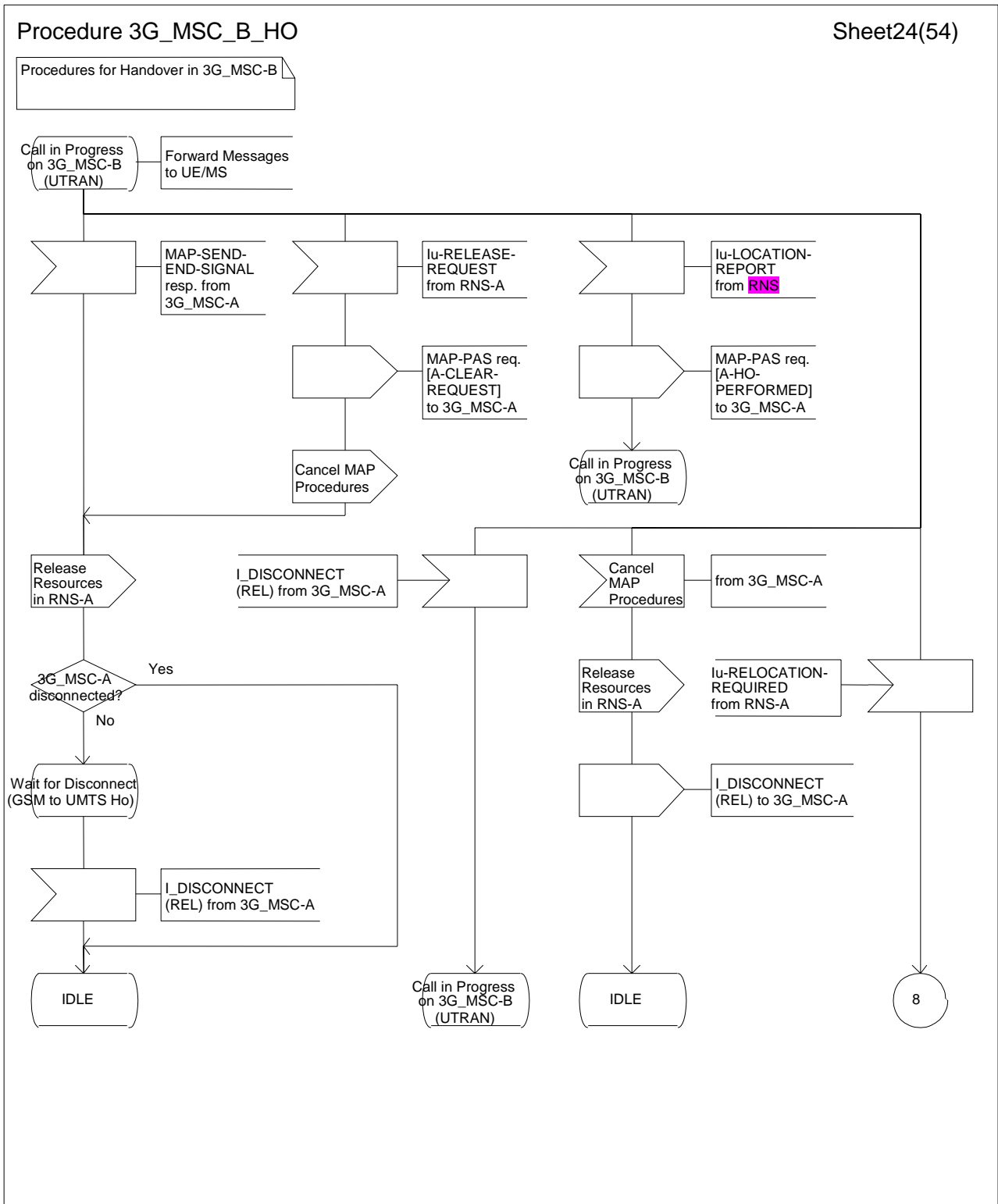


Figure 44 (sheet 24 of 54): Handover control procedure in 3G_MSC-B

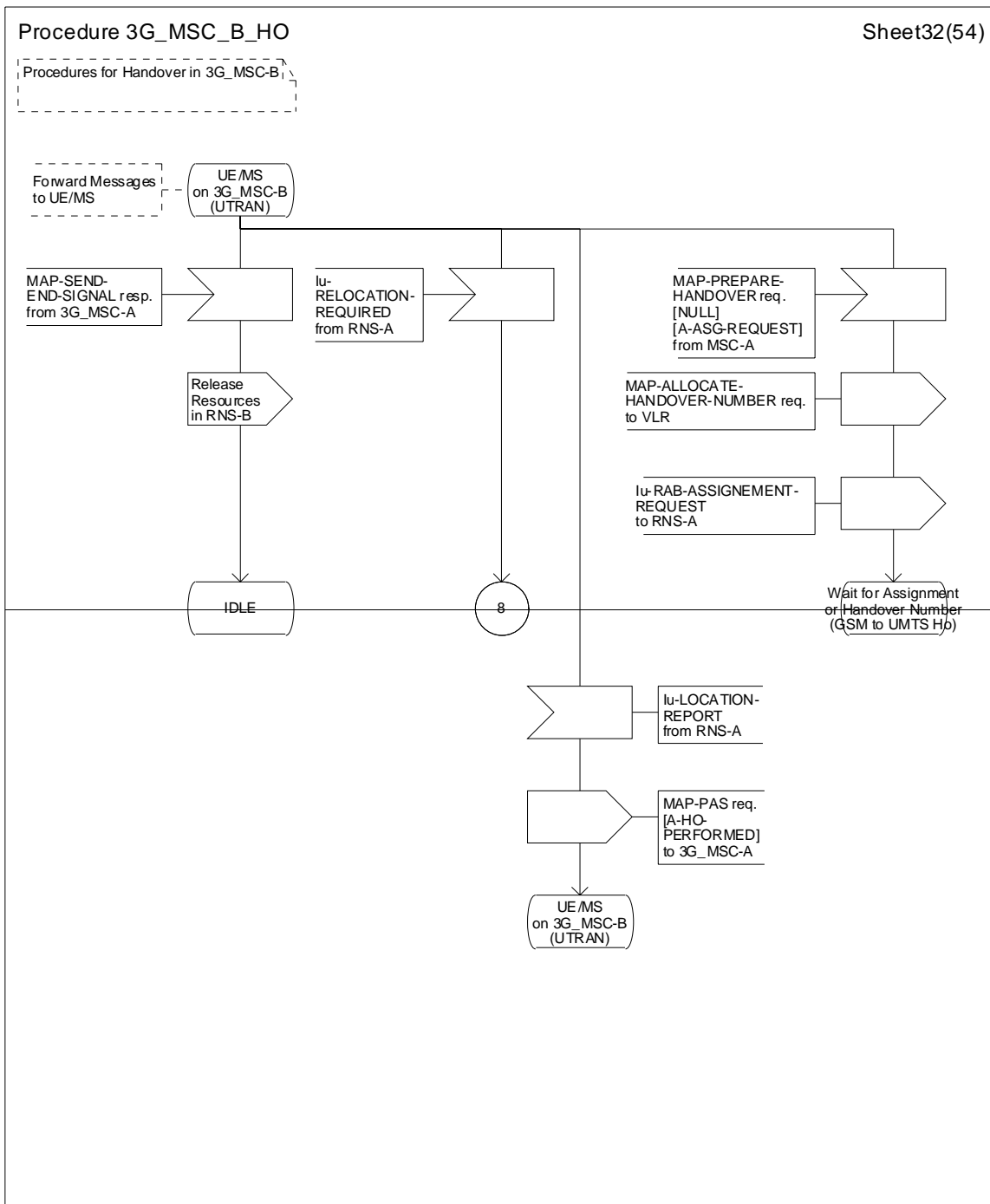


Figure 44 (sheet 32 of 54): Handover control procedure in 3G_MSC-B

Procedure 3G_MSC_B_HO

Sheet32(54)

Procedures for Handover in 3G_MSC-B

