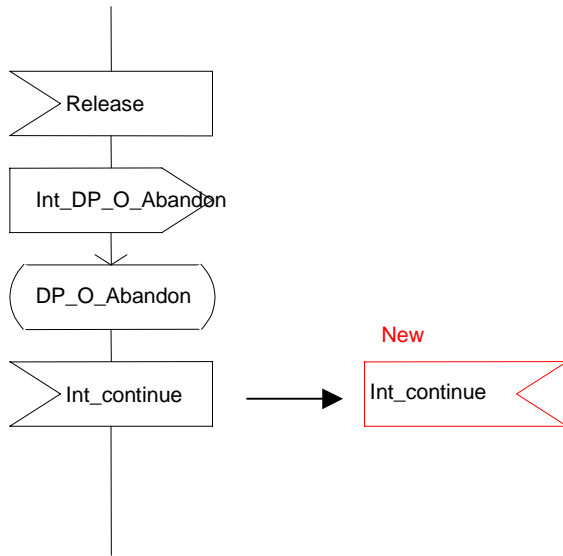




## Correction (1)

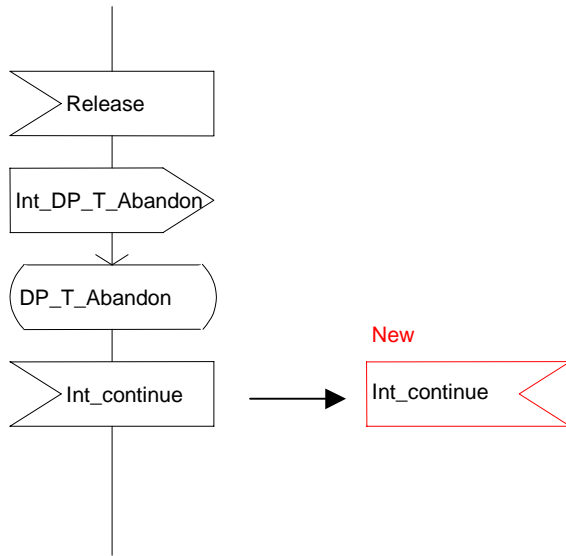
All the figures which indicate DP O\_Abandon is armed as EDP\_R should be corrected as follows.



Figures	Procedures	sheets	Notes
4.10e	CAMEL_OCH_MSC_INIT	4	
4.14b	CAMEL_OCH_MSC1	2	
4.15b	CAMEL_OCH_MSC2	2	
4.18a	CAMEL_OCH_MSC_DISC4	1	
4.19a	CAMEL_OCH_ETC	1	
4.19c	CAMEL_OCH_ETC	3	
4.20b	CAMEL_OCH_CTR	2	Two corrections
4.20d	CAMEL_OCH_CTR	4	
4.50d	CAMEL_CF_MSC_INIT	4	
4.54a	CAMEL_CF_ETC	1	
4.54c	CAMEL_CF_ETC	3	
4.55b	CAMEL_CF_CTR	2	Two corrections
4.55d	CAMEL_CF_CTR	4	

## Correction (2)

All the figures which indicate DP T\_Abandon is armed as EDP\_R should be corrected as follows.



Figures	Procedures	sheets	Notes
4.27d	CAMEL_MT_GMSC_INIT	4	
4.27f	CAMEL_MT_GMSC_INIT	6	
4.27h	CAMEL_MT_GMSC_INIT	8	
4.31a	CAMEL_MT_GMSC_DISC4	3	
4.32c	CAMEL_MT_GMSC_DISC5	3	
4.33a	CAMEL_MT_GMSC_DISC6	1	
4.34a	CAMEL_MT_GMSC_ETC	1	
4.34c	CAMEL_MT_GMSC_ETC	3	
4.35b	CAMEL_MT_GMSC_CTR	2	Two corrections
4.36	CAMEL_MT_GMSC_Notify_CF	1	
4.45d	CAMEL_ICH_MSC_INIT	4	
4.46	CAMEL_MT_VMSC_Notify_CF	1	