

Work item status and approval time frame

This list reflects the work items running under the responsibility of TSG GERAN.

Feature	Building block	Work task	Date of completion	Status
GERAN/UTRAN interface evolution 1 GP-000481	Evolution of Iu-ps	<ul style="list-style-type: none"> Identification of GERAN requirements on Iu-ps Update of specifications 	Nov 2001 Mar 2002	Ongoing
GERAN/UTRAN interface evolution 2 GP-010417	Evolution of Iu-CS GP-000430	<ul style="list-style-type: none"> Identification of GERAN requirements on Iu-CS Update of specifications 	Apr 2002 Jun 2002	Ongoing (RAN responsible for approval)
Low chip rate TDD option (UTRAN)	Low chip rate TDD interworking with GERAN GP-000432	<ul style="list-style-type: none"> Handover and Cell Selection / Reselection to UTRA 1.28Mcps TDD 		Ready for R4. Closed
GERAN improvements 1 GP-000433	Gb over IP GP-000434	IP-fication of Gb <ul style="list-style-type: none"> Concept Changes to 08.16, 08.18 		Ready for R4. Closed
GERAN improvements 2 GP-012812	Gb enhancements GP-000436	Intra BSC NACC <ul style="list-style-type: none"> Concept Changes in 03.64 Changes in 04.60 Changes in 44.008 		Ready for R4. Closed
	MS conformance test for Intra BSC NACC GP-012811	<ul style="list-style-type: none"> Changes in 51.010 	Jun 2002	Not started
GERAN improvements 3 GP-010418	Evolution of the transport for A GP-010910	<ul style="list-style-type: none"> Definition of a new A/Ater Interface Transport Layer option based on the Iu Interface Transport Layer Adaptation of the Layer 3 BSSMAP procedures as required. 	Apr 2002	Ongoing
GERAN Improvements 4 GP-010363	Gb enhancements 2 GP-010363	Stage 2 Stage 3 (changes in 44.060) <ul style="list-style-type: none"> Definition of enhanced countdown procedure Definition of enhanced TBF release procedure 		Ready for R4. Closed
GERAN Inter BSC NACC improvements over the Gb Interface GP-012313	Modification of Gb protocols for GERAN Inter BSC NACC over the Gb interface GP-012314	Stage 3 (changes to) <ul style="list-style-type: none"> 48.018 	Apr 2002	Ongoing
	Modification of core network protocols for GERAN Inter BSC NACC for Gb interface GP-011877	Stage 2 <ul style="list-style-type: none"> Concept 23.060 change – Definition of Inter BSC NACC Stage 3 (changes to) <ul style="list-style-type: none"> 29.060 	Nov 2001 Apr 2002	



A GLOBAL INITIATIVE

TSG GERAN

TSG SA#16

TSG GERAN Report

to

TSG-SA#16

TSG-GERAN Chairman

Niels Peter Skov Andersen

Motorola



Tdoc SP-020370



TSG GERAN work area (1/2)



**TSG GERAN
TSG SA#10**

TSG GSM/EDGE Radio Access Network (TSG-GERAN)

- **GERAN Radio aspects, and interfaces**
- **RF aspects of GERAN**
- **Specifications for GERAN radio performance and RF system aspects**
- **GERAN Radio Layer 1 specification**
- **GERAN Radio Layer 2 specification**
- **GERAN Radio Layer 3 RR specification**

A GLOBAL INITIATIVE

TSG GERAN work area (2/2)



- **A interface specification, Gb interface specification**
- **Internal GERAN interface specifications such as Abis, and Ater (CCU-TRAU)**
- **Conformance test specifications for testing of all aspects of GERAN base stations**
- **Conformance test specifications for testing of all aspects of GERAN terminals**
- **GERAN specific O&M specifications for the nodes in the GERAN**

•

A GLOBAL INITIATIVE

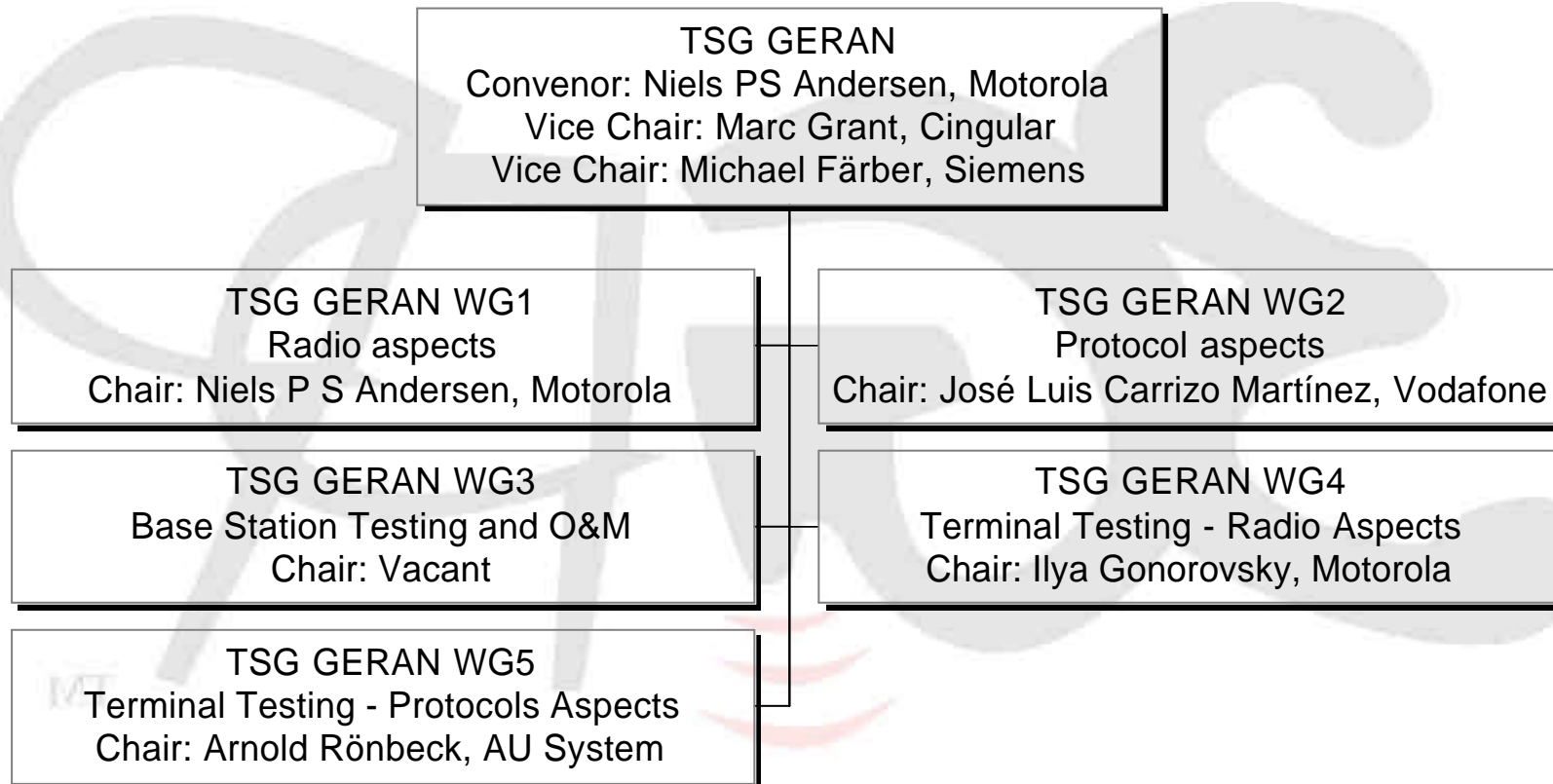
Organisation of TSG GERAN (1/4)



A GLOBAL INITIATIVE

TSG GERAN

TSG SA#10



A GLOBAL INITIATIVE

Organisation of TSG GERAN ***(2/4)***



TSG GERAN WG1 – Radio Aspects

- **Chairman: Niels Peter Skov Andersen, Motorola**
- **RF aspects of GERAN**
- **GERAN radio performance and RF system aspects**
- **Ater (CCU-TRAU)**

TSG GERAN WG2 – Protocol Aspects

- **Chairman: José Luis Carrizo Martínez, Vodafone**
- **GERAN Radio Layer 2 specification**
- **GERAN Radio Layer 3 RR specification**
- **A interface specification, Gb interface specification**
- **Internal GERAN interface specifications such as Abis**

Organisation of TSG GERAN ***(3/4)***



TSG GERAN WG3 – Base Station Testing and O&M

Chairman: Vacant

- **Conformance test specifications for testing of all aspects of GERAN base stations**
- **GERAN specific O&M specifications for the nodes in the GERAN**

Organisation of TSG GERAN **(4/4)**



TSG GERAN WG4 – Terminal Testing – Radio Aspects

Chairman: Ilya Gonorovsky

- **Conformance test specifications for testing of Lower layers including RLC/MAC**

TSG GERAN WG5 – Terminal Testing – Protocol Aspects

Chairman: Arnold Rönbeck, AU System

- **Conformance test specifications for testing Protocol aspects above the RLC/MAC**

A GLOBAL INITIATIVE

GPRS/EDGE



- **Specifications stable no major issues detected for frozen Releases (R97, R98, R99, release 4)**
- **Mandatory requirement on mobile to support fixed allocation proposed removed due to lack of usage in networks – TSG GERAN decided to remove fixed allocation from Release 5 and onwards – Will be optional for R99-Rel 4. Test specifications needs to be updated not to use fixed allocation to test other items than Fixed Allocation**

Multimode GSM – 3G



- **No major changes**
- **Alignment between GERAN requirements and RAN WG2 requirements verified**
- **Initial 3G reporting in dedicated mode clarified**

A GLOBAL INITIATIVE

LCS



A GLOBAL INITIATIVE

TSG GERAN

TSG SA#16

- Only smaller corrections for LCS R98→
- LCS support for GPRS completed

A GLOBAL INITIATIVE

Support for Codecs (1/4)



- **The discussion of potential changing the performance requirements for AMR on GMSK channels due to errors in the original simulations has been re-open as mobile manufacturer indicates problems fulfilling the requirements**
- **TSG GERAN has completed work on 8-PSK channels for AMR with exception of the final radio performance requirements**

A GLOBAL INITIATIVE

Support for codecs (2/4)



- **TSG GERAN is in the progress of evaluating Channel Coding for 8-PSK Channels to support AMR-WB**
- **TSG GERAN has completed the changes needed to support AMR-WB on GMSK channels taking into account the limitation of modes for Tele Service 11**

A GLOBAL INITIATIVE

GERAN I_u-mode



- **I_u-mode broadcast capacity believed solved through usage of PBCCH**
- **RRC (TS 44.118) – Completion June except**
 - Allocation of Radio Resource in case of dormant Radio Bearer (August)
- **RLC/MAC – Completion June except**
 - Abnormal cases for multiple TBF assignment messages (August)
- **Iu-interface – Completion June except**
 - Support for HSCSD over the Iu interface (November)

GERAN I_u-mode



- **Iur-g dependencies to TSG RAN**
 - Stage 2 CRs (to 25.401 and 25.421) proposed by GERAN2 at G2 #9bis (expected approval at TSG RAN #17 September)
 - Stage 3 CR (to 25.413) (expected approval TSG RAN #16)

A GLOBAL INITIATIVE

Other Release 5 issues



- **Gb flow control**
 - Stage 2 CR (to 23.060) – (Expected approval at TSG SA#17)
 - Stage 3 CR (to 48.018) – Completion June
- **Evolution of the transport for the A interface**
 - No progress – Work Item likely to be deleted
- **Multiple TBFs in *A/Gb mode***
 - Expected completion August

A GLOBAL INITIATIVE

Other Release 5 issues



- **A/Gb-flex**
 - Stage 3 CR (to 48.018) to be approved in June
 - Changes to 48.016 are expected by August
- **Feasibility study on *A/Gb mode* evolution**
 - Expected by June 2002

Other Technical Issues



- **Work started on unequal error protection – TSG GERAN is in dialogue with TSG SA WG2 and TSG RAN WGs**
- **New work item on of introduction of Flexible Layer One Concept (FLOC)**
- **MBMS**
 - Delegates participated in MBMS workshop
 - Radio Requirements document to be developed with RAN WG2 as primary responsible

Extract of GERAN work programme and list of CR handled at TSG GERAN #08 is attached to this report

A GLOBAL INITIATIVE

Testing (1/2)



- **Main focus has been on testing of:**
 - Radio & Layer 1
 - GPRS
 - EDGE
 - Selection/Reselection & Handover (2.5G, 3G)
 - LCS
 - Tracking of core specification changes
 - AMR (Narrow band)
 - DTM

A GLOBAL INITIATIVE

Testing (2/2)



- The members have been requested to provide input for the development of Test Cases for:
 - Wideband AMR
 - RLC/MAC (Iu interface CS and PS domain)
 - Enhanced power control
 - AMR 8 PSK HR
 - Selection/Reselections (GERAN I_u-mode >UTRAN)
 - Handover (GERAN I_u-mode >UTRAN PS).

Specification and version numbering



- **Old specification numbers and version numbers are kept for Phase 1, Phase 2, Release 96, Release 97, Release 98, and Release 99**
- **For Releases after Release 99 specification numbering to follow 3GPP format xx.yyy and version number aligned with other TSGs, e.g next release will be version 4.x.y.**
- **New specification numbers to be derived from the old specification number**
ab.cd=> (40+ab).0cd
e.g
05.08 => 45.008

A GLOBAL INITIATIVE

Future TSG GERAN Plenary meetings



TSG GERAN #10	24 - 28 June 2002, Europe
TSG GERAN #11	26 - 30 August 2002, USA
TSG GERAN #12	18 - 22 November 2002, ??
TSG GERAN #13	3 - 7 February 2003
TSG GERAN #14	7-11 April 2003
TSG GERAN #15	24 – 26 June 2003
TSG GERAN #16	25-29 August 2003
TSG GERAN #17	17-21 November 2003

GERAN support for IP multimedia GP-010420	GERAN Header adaptation GP-010421	Header adaptation: <ul style="list-style-type: none"> • Definition of compression and removal modes for PDCP protocol • Conceptual description in stage 2 • Necessary changes on stage 3 regarding header removal 	Sept 2000 Oct 2001 Dec 2002	Ongoing
	GERAN Radio access bearer design for IP multimedia GP-010422	MuM control signalling for conversational multimedia services. <ul style="list-style-type: none"> • Identification of requirements • Necessary modifications due to SIP 	Feb 2002 Jun 2002	Ongoing
	GERAN MS Conformance test for support of IP multimedia GP-010424	<ul style="list-style-type: none"> • MS test 	Dec 2002	Not started
	GERAN BTS Conformance test for support of IP multimedia GP-010425	<ul style="list-style-type: none"> • BTS test 	Dec 2002	Not started
Alignment of 3G functional split and lu GP-012757	GERAN user / control plane GP-012756	Alignment with UMTS bearer concept <ul style="list-style-type: none"> • Stage 2 	Jun 2001	Ongoing
		<ul style="list-style-type: none"> • Adoption of the UTRAN PDCP 	Dec 2001	
		<ul style="list-style-type: none"> • Development of RLC / MAC 	Jun 2002	
		<ul style="list-style-type: none"> • Development of GERAN RRC 	Jun 2002	
		<ul style="list-style-type: none"> • Ciphering and integrity protection concept paper 	Apr 2002	
		<ul style="list-style-type: none"> • Multiple TBF or equivalent Concept paper 	Feb 2002	
		<ul style="list-style-type: none"> • Paging concept 	Apr 2002	
		<ul style="list-style-type: none"> • Dedicated physical subchannels. Includes traffic and control channels 	Nov 2001	
		<ul style="list-style-type: none"> • lu support and broadcast concept 	Apr 2002	
		<ul style="list-style-type: none"> • Impact of using RLC instead of LAPDm concept 	Feb 2002	
		<ul style="list-style-type: none"> • Contention resolution, mobile-station identity, and access concept 	Nov 2001	
		<ul style="list-style-type: none"> • PDCP concept 	Apr 2002	
		<ul style="list-style-type: none"> • Downlink delayed TBF release 	Oct 2001	
		<ul style="list-style-type: none"> • Add transparent RLC Concept 	Feb 2002	
<ul style="list-style-type: none"> • Handover concept 	Feb 2002			

		<ul style="list-style-type: none"> Physical layer alignment with UMTS bearer concept Control channels in 45.003 Receiver performance in 45.005 for PDTCH/TCH and control channels 	Jun 2001	
	Iu rg interface GP-010428	Inter BSS interface Identification of requirements Stage 2 Adoption of relevant parts from Iu r Complementation with GERAN specifics New stage 3	Jun 2002	Ongoing (RAN responsible for approval)
		Inter BSS-RNS interface Identification of requirements Stage 2 Adoption of relevant parts from Iu r Complementation with GERAN specifics New stage 3	Jun 2002	Ongoing (RAN responsible for approval)
	Voice over GERAN PS and CS concept GP-010432	Voice over GERAN PS and CS concept <ul style="list-style-type: none"> Architecture for A, Iu cs and Iu ps Handover RTP payload 	Nov 2001	Ongoing
	GERAN MS Conformance test for GERAN interface evolution GP-010434	<ul style="list-style-type: none"> MS test 	Dec 2002	Not started
	GERAN BTS Conformance test for GERAN interface evolution GP-010435	<ul style="list-style-type: none"> BTS test 	Dec 2002	Not started
Enhanced A/Gb feasibility study	Enhanced A/Gb feasibility study	<ul style="list-style-type: none"> Study on A/Gb enhancements 	Jun 2002	Started
Flow control supporting an MS with multiple data flows with different QoS over the Gb interface GP-020964	Update of stage 2 specifications	<ul style="list-style-type: none"> Concept document 23.060 (changes to) – Flow Control 	June 2002 June 2002	Started
	Modification of BSSGP protocol	Stage 3 (changes to) <ul style="list-style-type: none"> 48.018 	June 2002	Started
Multiple TBF in A/Gb mode GP-021209	Multiple TBF in A/Gb mode	<ul style="list-style-type: none"> Multiple TBF Concept paper Multiple TBF Stage 2 (43.064) CRs Multiple TBF Stage 3 (44.060) CRs 	June 2002	Started
Flexible Layer One for GERAN	Realisation of a Flexible Layer One	Concept Document Architecture in 45.001 and 43.051 Multiplexing in 45.002 Channel Coding in 45.003 Performance Requirements in 45.005 Radio subsystem link control in 45.008 Requirements in 44.004		Started

	Signalling and protocol support for a Flexible Layer One	Modifications to RLC/MAC in 44.060 and 44.160 Modifications to RRC in 44.118 and 44.018		Started
	Security for a Flexible Layer One	Ciphering in 44.160,44.118, 44.060 and 44.018		Started
	GERAN MS Conformance test for the Flexible Layer One	MS Test in 51.010		Started
	GERAN BTS Conformance test for the Flexible Layer One	BTS Test in 51.021		Started
Enhanced Power Control GP-012748	Realization of Enhanced power control and signaling support GP-012749	Concept Changes to 43.051 Changes to 44.004 Changes to 44.018 Changes to 48.058 Changes to 45.001 Changes to 45.002 Changes to 45.003 Changes to 45.008	Nov 2001	Closed for Rel 5
	GERAN MS Conformance test for Enhanced Power Control GP-012750	<ul style="list-style-type: none"> MS test 	Jun 2002	Not started
	GERAN BTS Conformance test for Enhanced Power Control GP-012751	<ul style="list-style-type: none"> BTS test 	Jun 2002	Not started
8PSK AMR HR GP-012752	Definition of channel coding, performance requirements and signaling support GP-012753	<ul style="list-style-type: none"> Concept Changes to 44.018 Changes to 45.001 Changes to 45.002 Changes to 45.003 Changes to 45.005 Changes to 24.008 Changes to 48.058 	Jun 2002	Ongoing
	GERAN MS Conformance test for 8PSK HR GP-012754	<ul style="list-style-type: none"> MS test 	Dec 2002	
	GERAN BTS Conformance test for 8PSK HR GP-012755	<ul style="list-style-type: none"> BTS test 	Dec 2002	
GERAN enhancements for streaming services 1 GP-010430	GERAN enhancements for streaming services 1 GP-010430	<ul style="list-style-type: none"> Concept RLC protocol enhancement (SDU Discard) 	Oct 2001 Nov 2001????	Ongoing
GERAN enhancements for streaming services 2 GP-010429	GERAN enhancements for streaming services 2 GP-010429	Usage of ECSD Stage 2 Stage 3 <ul style="list-style-type: none"> RLC PDU formats MAC header 	Jun 2001 Jun 2002	Ongoing

Intra Domain Connection of RAN Nodes to Multiple CN Nodes: Overall System Architecture	GERAN work for Intra Domain Connection of RAN Nodes to Multiple CN Nodes GP-020254	<p>Stage 2 (changes to)</p> <ul style="list-style-type: none"> 43.051 Introduction of support for IDNNS in GERAN lu mode <p>Stage 3 (changes to)</p> <ul style="list-style-type: none"> 48.016 Use of Gb interface concepts when a network applies IDNNS 48.018 Include MSC/VLR identity in CS IMSI paging 	Jun 2002	Started in TSG GERAN #8
700 MHz spectrum support GP-000449	GERAN support for the 700 MHz band	<ul style="list-style-type: none"> Signaling support Physical layer definitions Receiver performance and RF budget 		Ready for R4. Closed
	GERAN MS Conformance test for 700 MHz band GP-000451	<ul style="list-style-type: none"> MS test 	Jun 2001	Closed
	GERAN BTS Conformance test for GERAN interface evolution GP-000452	<ul style="list-style-type: none"> BTS test 	Jun 2001	Ongoing
Real Time QoS for packet services including VoIP (UTRAN)	HOs: maintenance of real-time QoS while moving between cells in the PLMN including inter-SGSN change and SRNS relocation or possibly other mechanisms (UTRAN) GP-010431	<p>Handover for the packet switched domain</p> <ul style="list-style-type: none"> Stable RT handover report 25.936 including header removal Update of stage 2 Update of relevant stage 3 specs 	Nov 2001	Closed
Wideband telephony services (UMTS)	Support of WB AMR in GERAN GP-000453	<p>GMSK and 8PSK WB FR / HR support</p> <ul style="list-style-type: none"> Channel coding in 45.003 Signalling for A interface Signalling for lu Link adaptation in 45.009 Receiver performance in 45.005 	<p>Apr 2002 Nov 2001</p> <p>Jun 2002</p>	Ongoing
	GERAN MS Conformance test for WB AMR GP-000454	<ul style="list-style-type: none"> MS test 	Dec 2002	Not started
	GERAN BTS Conformance test for WB AMR GP-000455	<ul style="list-style-type: none"> BTS test 	Dec 2002	Not started
Location service (UMTS)	LCS interoperability aspects to GERAN GP-000456	<ul style="list-style-type: none"> Co-ordinated development of GSM LCS Phase 2 and UMTS LCS, S2 and GERAN 		Ongoing
	Location service for GERAN R4 GP-010932	<ul style="list-style-type: none"> Work for aligning LCS R4 CN and GERAN 		Ready for R4. Closed

	Location Services (LCS) for GERAN in A/Gb Mode GP-011925	<ul style="list-style-type: none"> • GERAN LCS Stage Two • Gb interface support for LCS • L3 protocol support for LCS • Stage 3 specifications 	Feb. 2002	Ready for Rel-5. Closed
	Location Services (LCS) for GERAN in Iu Mode GP-011926	<ul style="list-style-type: none"> • GERAN LCS stage 2 • Iu interface support for LCS • Iur-g interface support for LCS • RRC protocol support for LCS • Additional impacts on Broadcast of LCS data on packet channels • Stage 3 specifications 	Stage 2- GERAN #8 Feb. 2002 Stage 3 – GERAN #9 Jun 2002	<p>Ongoing</p> <p>GERAN LCS Stage 2 IU mode 50% complete</p> <p>Iur-g is FFS</p> <p>Stage 3 specifications needed</p> <p>RRC protocol support for LCS concept was discussed in GERAN(2)bis#6</p> <p>Broadcast LCS data for IU mode: at GERAN #7 discussed and agreed that the capacity exists on the PBCCH to accommodate LCS Broadcast assistance data.</p>
	GERAN MS Conformance test for LCS GP-000458	<ul style="list-style-type: none"> • Develop LCS MS test case work plan (Release 98/99/4) • Develop LCS MS test cases 	Dec (#11) 2002	<p>Work plan agreed: GERAN #7</p> <p>Test case development ongoing.</p>
	GERAN BTS Conformance test for LCS GP-000459	<ul style="list-style-type: none"> • Develop LCS BTS test case work plan (Release 99/99/4) • Develop LCS BTS test cases 	Dec 2002	Work has not started
Uplink TDOA feasibility study GP-012794	Uplink TDOA feasibility study GP-012794	<ul style="list-style-type: none"> • Performing of a feasibility study 	Jun 2002	Started at GERAN #7

Tdoc	Title	Source	Status
GP-020859	CR 03.22-A056 Clarification on CPBCCCH (R99)	Siemens	Withdraw
GP-020671	CR 04.18-A242: Correction of DTM message type values (R99)	TSG GERAN WG2	Approved
GP-020706	CR 04.18-A245 rev 1: Backwards compatibility of R99 extensions in IA Rest octets (R99)	TSG GERAN WG2	Approved
GP-020712	CR 04.18-A246 rev 1: Backwards compatibility of R99 extensions in RR Packet Downlink Assignment IE (R99)	TSG GERAN WG2	Approved
GP-020716	CR 04.18-A247 rev 2: Backwards compatibility of R99 extensions in RR Packet Uplink Assignment IE (R99)	TSG GERAN WG2	Approved
GP-020856	CR 04.18-A248 Usage of CBQ2 (R99)	Siemens	Withdraw
GP-020916	CR 04.18-A249 PFC for DTM (R99)	Ericsson	Revised
GP-021128	CR 04.18-A249 rev 1 PFC for DTM (R99)	Ericsson	Approved
GP-020919	CR 04.18-A250 Starting Time in DTM Assignment (R99)	Ericsson	Rejected
GP-020922	CR 04.18-A251 FDD, TDD and CDMA2000 parameters in MEASUREMENT INFORMATION (R99)	Ericsson	Withdraw
GP-020945	CR 04.18-A252 Initial 3G Neighbour cell reporting in dedicated mode (R99)	Nokia	Revised
GP-021097	CR 04.18-A252 rev 1 Initial 3G Neighbour cell reporting in dedicated mode (R99)	Nokia	Approved
GP-020954	CR 04.18-A253 Correction to indexing mechanism for UTRAN frequencies (R99)	Nokia	Withdraw
GP-020994	CR 04.18-A254 Alignment of ""resegment"" information description (R99)	Nortel Networks	Approved
GP-020707	CR 04.31-A071 rev 3: Clarification and Correction of DGPS Data Fields (R99)	TSG GERAN WG2	Approved
GP-020674	CR 04.31-A072: Removing condition to Control Header parameter (R98)	TSG GERAN WG2	Approved
GP-020675	CR 04.31-A073: Removing condition to Control Header parameter (R99)	TSG GERAN WG2	Approved
GP-020540	CR 04.31-A074 Correction of syntax faults in the ASN.1 (R98)	Ericsson	Revised
GP-021131	CR 04.31-A074 rev 1 Correction of syntax faults in the ASN.1 (R98)	Ericsson	Revised
GP-021249	CR 04.31-A074 rev 2 Correction of syntax faults in the ASN.1 (R98)	Ericsson	Approved
GP-020541	CR 04.31-A075 Correction of syntax faults in the ASN.1 (R99)	Ericsson	Revised
GP-021132	CR 04.31-A075 rev 1 Correction of syntax faults in the ASN.1 (R99)	Ericsson	Revised
GP-021250	CR 04.31-A075 rev 2 Correction of syntax faults in the ASN.1 (R99)	Ericsson	Approved
GP-020544	CR 04.31-A076 Usage of "SystemInfoIndex" by the MS in E-OTD measurement reporting (R98)	Ericsson	Approved
GP-020545	CR 04.31-A077 Usage of "SystemInfoIndex" by the MS in E-OTD measurement reporting (R99)	Ericsson	Approved
GP-020609	CR 04.31-A078 Correction on Navigation Model Update Mechanism (R98)	Ericsson	Revised
GP-021141	CR 04.31-A078 rev 1 Correction on Navigation Model Update Mechanism (R98)	Ericsson	Revised
GP-021267	CR 04.31-A078 rev 2 Correction on Navigation Model Update Mechanism (R98)	Ericsson	Postponed
GP-020610	CR 04.31-A079 Correction on Navigation Model Update Mechanism (R99)	Ericsson	Revised
GP-021142	CR 04.31-A079 rev 1 Correction on Navigation Model Update Mechanism (R99)	Ericsson	Revised
GP-021268	CR 04.31-A079 rev 2 Correction on Navigation Model Update Mechanism (R99)	Ericsson	Postponed
GP-020684	CR 04.60-B071: Padding bits definition in the Additional MS Radio Access Capabilities message (R99)	TSG GERAN WG2	Approved
GP-020687	CR 04.60-B072: Usage of the ES/P field in the generation of the Ack/Nack bitmap (R99)	TSG GERAN WG2	Approved
GP-020690	CR 04.60-B073: CSN.1 syntax correction in the PCCO message (R99)	TSG GERAN WG2	Approved
GP-020703	CR 04.60-B074 rev 1: CSN.1 syntax correction in the Packet Measurement Report message (R99)	TSG GERAN WG2	Approved
GP-020713	CR 04.60-B075 rev 2: Missing definition of m, n, p and r bits in EGPRS Packet Channel Request (R99)	TSG GERAN WG2	Approved

Tdoc	Title	Source	Status
GP-020749	CR 04.60-B076 rev 1 Rules for inclusion of Access Technology Types in MS Radio Access Capability (R99)	Siemens	Revised
GP-021081	CR 04.60-B076 rev 2 Rules for inclusion of Access Technology Types in MS Radio Access Capability (R99)	Siemens	Revised
GP-021243	CR 04.60-B076 rev 3 Rules for inclusion of Access Technology Types in MS Radio Access Capability (R99)	Siemens	Approved
GP-020939	CR 04.60-B077 MS behavior upon PFI change (R99)	Siemens	Approved
GP-020700	CR 04.60-B078: Minor corrections in 04.60 (R99)	TSG GERAN WG2	Approved
GP-020752	CR 04.60-B079 Coding of Repeated UTRAN TDD Neighbour Cells struct in the PMO message (R99)	Siemens	Rejected
GP-020755	CR 04.60-B080 Wrong description of Bitmap type reporting in Packet Enhanced Measurement Report message (R99)	Siemens	Revised
GP-021088	CR 04.60-B080 rev 1 Wrong description of Bitmap type reporting in Packet Enhanced Measurement Report message (R99)	Siemens	Approved
GP-020758	CR 04.60-B081 Missing semicolon in PSI3ter message (R99)	Siemens	Approved
GP-020761	CR 04.60-B082 Wrong bracket in Packet Polling Request message (R99)	Siemens	Approved
GP-020764	CR 04.60-B083 Wrong bracket in PSI3ter message (R99)	Siemens	Withdraw
GP-020767	CR 04.60-B084 Wrong reference in Packet Downlink Assignment message (R99)	Siemens	Revised
GP-021094	CR 04.60-B084 rev 1 Wrong reference in Packet Downlink Assignment message (R99)	Siemens	Approved
GP-020667	CR 04.60-B085 Clarification of the Packet Uplink Dummy control block use (R99)	Philips Semiconductors	Rejected
GP-020906	CR 04.60-B086 CSN-1 fault in the PACKET UPLINK ACK/NACK message (R99)	Ericsson	Revised
GP-021075	CR 04.60-B086 rev 1 CSN-1 fault in the PACKET UPLINK ACK/NACK message (R99)	Ericsson	Approved
GP-020910	CR 04.60-B087 CS parameters in the MS Radio Capabilities IE (R99)	Ericsson	Rejected
GP-020948	CR 04.60-B088 Initial 3G Neighbour reporting in dedicated mode (R99)	Nokia	Revised
GP-021100	CR 04.60-B088 rev 1 Initial 3G Neighbour cell reporting in dedicated mode (R99)	Nokia	Approved
GP-020951	CR 04.60-B089 Correction to indexing mechanism for UTRAN frequencies (R99)	Nokia	Withdraw
GP-020974	CR 04.60-B090 PLMN-Id description on PBCCH (R99)	Alcatel	Withdraw
GP-020991	CR 04.60-B091 Corrections to Packet uplink assignment procedure (R99)	Nortel Networks	Revised
GP-021085	CR 04.60-B091 rev 1 Corrections to Packet uplink assignment procedure (R99)	Nortel Networks	Revised
GP-021282	CR 04.60-B091 rev 2 Corrections to Packet uplink assignment procedure (R99)	Nortel Networks	Approved
GP-021196	CR 04.60-B092 Correction to PMO procedure initiated in Packet Idle Mode (R99)	Alcatel	Postponed
GP-021278	CR 04.60-B093 Correction to T3184 applicability (R99)	Nokia	Approved
GP-020723	CR 05.02-A200 Extended BCCH and SMSCB radio conflict (R99)	Philips Semiconductors	Rejected
GP-020812	CR 05.05-A205 Correction of AMR FR inband performance requirement (R98)	Ericsson	Revised
GP-021157	CR 05.05-A205 rev 1 Correction of AMR FR inband performance requirement (R98)	Ericsson	Approved
GP-020811	CR 05.05-A206 Correction of AMR FR inband performance requirement (R99)	Ericsson	Revised
GP-021156	CR 05.05-A206 rev 1 Correction of AMR FR inband performance requirement (R99)	Ericsson	Approved
GP-021030	CR 05.05-A207 Relaxation of AMR performance (R98)	Ericsson	Rejected
GP-021259	CR 05.05-A208 Reference sensitivity and interference performance requirements for TCH/AFS and TCH/AHS (R98)	Ericsson, Nokia, Philips, Siemens	Postponed
GP-020849	CR 05.08-A345 rev 1 Conversion of cell re-selection parameters (R99)	Siemens	Withdraw

Tdoc	Title	Source	Status
GP-020649	CR 05.08-A349 NBR_RCVD_BLOCKS for 14.4 non-transparent data (R99)	Nokia	Approved
GP-020853	CR 05.08-A350 Usage of CBQ2 (R99)	Siemens	Withdraw
GP-020942	CR 05.08-A351 Initial 3G Neighbour cell reporting in dedicated mode (R99)	Nokia	Withdraw
GP-020977	CR 05.08-A352 Correction and clarification of Enhanced Measurement computation (R99)	Alcatel	Rejected
GP-020980	CR 05.08-A353 Correction and clarification of time constraints for blind handover (R99)	Alcatel	Rejected
GP-020984	CR 05.08-A354 Correction of the initial value of C when entering in packet transfer mode (R99)	Alcatel	Withdraw
GP-020988	CR 05.08-A355 Correction SIGN_VAR computation (R99)	Alcatel	Withdraw
GP-021004	CR 05.08-A356 Clarification to priorities between GPRS interference measurements and InterRAT measurements (R99)	Nokia	Approved
GP-020970	CR 08.18-A138 rev 1 Correction to PFC transfer procedure upon cell change (R99)	Alcatel	Revised
GP-021071	CR 08.18-A138 rev 2 Correction to PFC transfer procedure upon cell change (R99)	Alcatel	Revised
GP-021246	CR 08.18-A138 rev 3 Correction to PFC transfer procedure upon cell change (R99)	Alcatel	Approved
GP-021222	CR 23.003-xxx Contention resolution in GERAN Iu mode (Rel-5)	Siemens	NA
GP-020966	CR 23.060-xxx Introduction of flow control per PFC (Rel 5)	Ericsson	NA
GP-020963	CR 23.060-xxx Update of Clause 8.1.5 – External Network assisted Cell Change Redefining clause 8.1.5 to mainly specify the RIM procedures and introduction of a possibility to stop event driven transmission of RAN INFORMATION messages (Rel 5)"	Ericsson	NA
GP-021235	CR 23.060-xxx Update of Clause 8.1.5 – External Network assisted Cell Change Redefining clause 8.1.5 to mainly specify the RIM procedures and introduction of a possibility to stop event driven transmission of RAN INFORMATION messages (Rel 5)	Ericsson	NA
GP-021148	CR 24.007-046 rev 1 RR protocol message type octet (R99)	Nokia	NA
GP-021149	CR 24.007-047 rev 1 RR protocol message type octet (Rel-4)	Nokia	NA
GP-020720	CR 27.007-xxx To align signal quality indications in different specifications (Rel 5) - WITHDRAWN	Ericsson	NA
GP-020860	CR 43.022-005 Clarification on CPBCCCH (Rel 4)	Siemens	Withdraw
GP-020861	CR 43.022-006 Clarification on CPBCCCH (Rel 5)	Siemens	Withdraw
GP-021009	CR 43.051-036 rev 2 Speech services for GERAN Iu-mode (Rel 5)	Nokia, Siemens	Revised
GP-021193	CR 43.051-036 rev 3 Speech services for GERAN Iu-mode (Rel-5)	Siemens, Nokia	Revised
GP-021226	CR 43.051-036 rev 4 Speech services for GERAN Iu-mode (Rel-5)	Siemens, Nokia	Revised
GP-021257	CR 43.051-036 rev 5 Speech services for GERAN Iu-mode (Rel 5)	Siemens	Approved
GP-020711	CR 43.051-038 rev 1: Interfaces between GERAN and CN	TSG GERAN WG2	Approved
GP-020883	CR 43.051-039 rev 3 Integrity protection in GERAN (Rel 5)	Siemens	Approved
GP-020576	CR 43.051-041 MAC multiplexing and scheduling (Rel 5)	AT&T Wireless	Postponed
GP-020801	CR 43.051-042 Alignment of RLC Functions with stage 3 (Rel 5)	Siemens	Revised
GP-021147	CR 43.051-042 rev 1 Alignment of RLC Functions with stage 3 (Rel-5)	Siemens	Approved
GP-020846	CR 43.051-043 Multiple TBF description in stage 2 (Rel 5)	Siemens	Postponed
GP-020873	CR 43.051-044 Clean-up (Rel 5)	Nokia	Revised
GP-021146	CR 43.051-044 rev 1 Clean-up (Rel-5)	Nokia	Approved
GP-020874	CR 43.051-045 Count input to ciphering algorithm (Rel 5)	Nokia	Approved
GP-020958	CR 43.051-046 Inclusion of the concept formerly known as "FACCH shared"	AT&T Wireless	Postponed
GP-021012	CR 43.051-047 Enhancement of the GERAN Classmark approach (Rel 5)	Siemens	Revised
GP-021195	CR 43.051-047 rev 1 Enhancement of the GERAN Classmark approach (Rel-5)	Siemens	Postponed
GP-020959	CR 43.051-048 rev 1 Contention resolution in Iu mode GERAN (Rel 5)	Siemens	Revised

Tdoc	Title	Source	Status
GP-021152	CR 43.051-048 rev 2 Contention resolution in Iu mode GERAN (Rel 5)	Siemens	Withdraw
GP-020529	CR 43.059-027 Corrections to LCS Stage 2 for Release 5	Nokia	Revised
GP-021215	CR 43.059-027 rev 1 Corrections to LCS Stage 2 for Release 5	Nokia	Approved
GP-020621	CR 43.059-028 Inclusion of PTP BVCI for Positioning Procedure over the Gb Interface (Rel 5)	Siemens	Approved
GP-020642	CR 43.059-029 Correction of timing when SMLC enters LOCATION state (Rel 4)	Siemens	Withdraw
GP-020643	CR 43.059-030 Correction of timing when SMLC enters LOCATION state (Rel 5)	Siemens	Revised
GP-021127	CR 43.059-030 rev 1 Correction of timing when SMLC enters LOCATION state (Rel 5)	Siemens	Approved
GP-020868	CR 43.059-031 LCS Stage 2 Corrections (Rel 5)	Nokia	Revised
GP-021217	CR 43.059-031 rev 1 LCS Stage 2 Corrections (Rel 5)	Nokia	Revised
GP-021225	CR 43.059-031 rev 2 LCS Stage 2 Corrections (Rel-5)	Nokia	Approved
GP-020998	CR 43.059-032 Correction of MS-SMLC Information Transfer Description (Rel 5)	Siemens	Approved
GP-021216	CR 43.059-033 Broadcast of assistance data	Nokia	Postponed
GP-020654	CR 43.064-007 Removal of Fixed Allocation (Rel 5)	Nokia	Approved
GP-020808	CR 44.004-007 rev 2 Introduction of Rel 5 Functionality (Rel 5)	Siemens	Revised
GP-021050	CR 44.004-007 rev 3 Introduction of Rel 5 Functionality (Rel 5)	Siemens	Revised
GP-021234	CR 44.004-007 rev 4 Introduction of Rel 5 Functionality (Rel 5)	Siemens	Approved
GP-020821	CR 44.018-070 Alignment of number of codecs for WB-AMR to proposed set (Rel 5)	Ericsson	Revised
GP-021045	CR 44.018-070 rev 1 Alignment of number of codecs for WB-AMR to proposed set (Rel 5)	Ericsson	Postponed
GP-020721	CR 44.018-148 rev 2 Correction of various message type values (Rel 4)	Ericsson	Approved
GP-020710	CR 44.018-149 rev 1: Correction of various message type values (Rel-5)	TSG GERAN WG2	Approved
GP-020680	CR 44.018-150: Alignment of 8PSK speech codecs references in GERAN specifications (Rel-5)	TSG GERAN WG2	Approved
GP-020693	CR 44.018-155: Backwards compatibility of R99 extensions in IA Rest octets (Rel-4)	TSG GERAN WG2	Approved
GP-020694	CR 44.018-156: Backwards compatibility of R99 extensions in IA Rest octets (Rel-5)	TSG GERAN WG2	Approved
GP-020695	CR 44.018-157: Backwards compatibility of R99 extensions in RR Packet Downlink Assignment IE (Rel-4)	TSG GERAN WG2	Approved
GP-020696	CR 44.018-158: Backwards compatibility of R99 extensions in RR Packet Downlink Assignment IE (Rel-5)	TSG GERAN WG2	Approved
GP-020717	CR 44.018-159 rev 1: Backwards compatibility of R99 extensions in RR Packet Uplink Assignment IE (Rel-4)	TSG GERAN WG2	Approved
GP-020718	CR 44.018-160 rev 1: Backwards compatibility of R99 extensions in RR Packet Uplink Assignment IE (Rel-5)	TSG GERAN WG2	Approved
GP-021026	CR 44.018-161 Iu mode Indication on BCCH in Rel-5 (Rel-5)	Nokia	Revised
GP-021138	CR 44.018-161 rev 1 Iu mode Indication on BCCH in Rel-5 (Rel-5) (Rel-5)	Nokia	Revised
GP-021190	CR 44.018-161 rev 2 Iu mode Indication on BCCH in Rel-5 (Rel-5) (Rel-5)	Nokia	Approved
GP-020622	CR 44.018-162 Scheduling of uplink RRLP pseudo-segments in RR (Rel 5)	Ericsson	Approved
GP-020857	CR 44.018-164 Usage of CBQ2 (Rel 4)	Siemens	Withdraw
GP-020858	CR 44.018-165 Usage of CBQ2 (Rel 5)	Siemens	Withdraw
GP-020917	CR 44.018-166 PFC for DTM (Rel 4)	Ericsson	Revised
GP-021129	CR 44.018-166 rev 1 PFC for DTM (Rel-4)	Ericsson	Approved
GP-020918	CR 44.018-167 PFC for DTM (Rel 5)	Ericsson	Revised
GP-021130	CR 44.018-167 rev 1 PFC for DTM (Rel-5)	Ericsson	Approved
GP-020920	CR 44.018-168 Starting Time in DTM Assignment (Rel 4)	Ericsson	Rejected
GP-020921	CR 44.018-169 Starting Time in DTM Assignment (Rel 5)	Ericsson	Rejected

Tdoc	Title	Source	Status
GP-020923	CR 44.018-170 FDD, TDD and CDMA2000 parameters in MEASUREMENT INFORMATION (Rel 4)	Ericsson	Withdraw
GP-020924	CR 44.018-171 FDD, TDD and CDMA2000 parameters in MEASUREMENT INFORMATION (Rel 5)	Ericsson	Withdraw
GP-020946	CR 44.018-172 Initial 3G Neighbour cell reporting in dedicated mode (Rel 4)	Nokia	Revised
GP-021098	CR 44.018-172 rev 1 Initial 3G Neighbour cell reporting in dedicated mode (Rel-4)	Nokia	Approved
GP-020947	CR 44.018-173 Initial 3G Neighbour cell reporting in dedicated mode (Rel 5)	Nokia	Revised
GP-021099	CR 44.018-173 rev 1 Initial 3G Neighbour cell reporting in dedicated mode (Rel-5)	Nokia	Approved
GP-020955	CR 44.018-174 Correction to indexing mechanism for UTRAN frequencies (Rel 4)	Nokia	Withdraw
GP-020956	CR 44.018-175 Correction to indexing mechanism for UTRAN frequencies (Rel 5)	Nokia	Withdraw
GP-020995	CR 44.018-176 Alignment of ""resegment"" information description (Rel 4)	Nortel Networks	Approved
GP-020996	CR 44.018-177 Alignment of ""resegment"" information description (Rel 5)	Nortel Networks	Approved
GP-021003	CR 44.018-178 Removal of Fixed Allocation (Rel 5)	Nokia	Revised
GP-021276	CR 44.018-178 rev 1 Removal of Fixed Allocation (Rel-5)	Nokia	Revised
GP-021291	CR 44.018-178 rev 2 Removal of Fixed Allocation (Rel-5)	Nokia	Approved
GP-021136	CR 44.018-179 Missing reference to CSN.1 specification (Rel-5)	Siemens	Approved
GP-020539	CR 44.031-032 rev 2 Final Response Indication in RRLP for Uplink Pseudo-segmentation (Rel-5)	Ericsson	Revised
GP-021224	CR 44.031-032 rev 3 Final Response Indication in RRLP for Uplink Pseudo-segmentation (Rel-5)	Ericsson	Approved
GP-020709	CR 44.031-035 rev 3: Clarification and Correction of DGPS Data Fields (Rel-5)	TSG GERAN WG2	Approved
GP-020708	CR 44.031-050 rev 3: Clarification and Correction of DGPS Data Fields (Rel-4)	TSG GERAN WG2	Approved
GP-020676	CR 44.031-051: Removing condition to Control Header parameter (Rel-4)	TSG GERAN WG2	Approved
GP-020677	CR 44.031-052: Removing condition to Control Header parameter (Rel-5)	TSG GERAN WG2	Approved
GP-020542	CR 44.031-054 Correction of syntax faults in the ASN.1 (Rel 4)	Ericsson	Revised
GP-021133	CR 44.031-054 rev 1 Correction of syntax faults in the ASN.1 (Rel-4)	Ericsson	Revised
GP-021265	CR 44.031-054 rev 2: Correction of syntax faults in the ASN.1 (Rel-4)	Ericsson	Approved
GP-020543	CR 44.031-055 Correction of syntax faults in the ASN.1 (Rel 5)	Ericsson	Revised
GP-021134	CR 44.031-055 rev 1 Correction of syntax faults in the ASN.1 (Rel-5)	Ericsson	Revised
GP-021266	CR 44.031-055 rev 2: Correction of syntax faults in the ASN.1 (Rel-5)	Ericsson	Approved
GP-020546	CR 44.031-056 Usage of "SystemInfoIndex" by the MS in E-OTD measurement reporting (Rel 4)	Ericsson	Approved
GP-020547	CR 44.031-057 Usage of "SystemInfoIndex" by the MS in E-OTD measurement reporting (Rel 5)	Ericsson	Approved
GP-020611	CR 44.031-058 Correction on Navigation Model Update Mechanism (Rel 4)	Ericsson	Revised
GP-021143	CR 44.031-058 rev 1 Correction on Navigation Model Update Mechanism (Rel-4)	Ericsson	Revised
GP-021269	CR 44.031-058 rev 2 Correction on Navigation Model Update Mechanism (Rel-4)	Ericsson	Postponed
GP-020612	CR 44.031-059 Correction on Navigation Model Update Mechanism (Rel 5)	Ericsson	Revised
GP-021144	CR 44.031-059 rev 1 Correction on Navigation Model Update Mechanism (Rel-5)	Ericsson	Revised
GP-021270	CR 44.031-059 rev 2 Correction on Navigation Model Update Mechanism (Rel-5)	Ericsson	Postponed
GP-020614	CR 44.035-009 Packet Broadcast of LCS Assistance Data (Rel 5)	Ericsson	Withdraw

Tdoc	Title	Source	Status
GP-020679	CR 44.060-063 rev 2: Updates to 44.060 §§ 1 to 3 (Rev-5)	TSG GERAN WG2	Approved
GP-020672	CR 44.060-076 rev 2: Basic changes to chapter 8 for Iu mode (Rel-5)	TSG GERAN WG2	Approved
GP-020673	CR 44.060-077 rev 2: Basic changes to chapter 9 for Iu mode (Rel-5)	TSG GERAN WG2	Approved
GP-020683	CR 44.060-091 rev 1: CR to 44.060 section 7 (Rel-5)	TSG GERAN WG2	Approved
GP-020670	CR 44.060-117: Clarification of the number of repetitions before failure (Rel-5)	TSG GERAN WG2	Approved
GP-020702	CR 44.060-119 rev 1: Minor corrections in 44.060 (Rel-5)	TSG GERAN WG2	Approved
GP-020876	CR 44.060-120 rev 1 Packet Paging Request message (Rel 5)	Nokia	Postponed
GP-020847	CR 44.060-122 rev 1 Iu-mode (single TBF) Packet Resource Request & Downlink Ack/Nack (Rel 5)	Siemens	Postponed
GP-020848	CR 44.060-123 rev 1 Iu-mode (single TBF) Packet Timeslot Reconfigure (Rel 5)	Siemens	Postponed
GP-020685	CR 44.060-124: Padding bits definition in the Additional MS Radio Access Capabilities message (Rel-4)	TSG GERAN WG2	Approved
GP-020686	CR 44.060-125: Padding bits definition in the Additional MS Radio Access Capabilities message (Rel-5)	TSG GERAN WG2	Approved
GP-020688	CR 44.060-126: Usage of the ES/P field in the generation of the Ack/Nack bitmap (Rel-4)	TSG GERAN WG2	Approved
GP-020689	CR 44.060-127: Usage of the ES/P field in the generation of the Ack/Nack bitmap (Rel-5)	TSG GERAN WG2	Approved
GP-020691	CR 44.060-128: CSN.1 syntax correction in the PCCO message (Rel-4)	TSG GERAN WG2	Approved
GP-020692	CR 44.060-129: CSN.1 syntax correction in the PCCO message (Rel-5)	TSG GERAN WG2	Approved
GP-020704	CR 44.060-130 rev 1: CSN.1 syntax correction in the Packet Measurement Report message (Rel-4)	TSG GERAN WG2	Approved
GP-020705	CR 44.060-131 rev 1: CSN.1 syntax correction in the Packet Measurement Report message (Rel-5)	TSG GERAN WG2	Approved
GP-020714	CR 44.060-132 rev 2: Missing definition of m, n, p and r bits in EGPRS Packet Channel Request (Rel-4)	TSG GERAN WG2	Approved
GP-020715	CR 44.060-133 rev 2: Missing definition of m, n, p and r bits in EGPRS Packet Channel Request (Rel-5)	TSG GERAN WG2	Approved
GP-020750	CR 44.060-134 rev 1 Rules for inclusion of Access Technology Types in MS Radio Access Capability (Rel 4)	Siemens	Revised
GP-021082	CR 44.060-134 rev 2 Rules for inclusion of Access Technology Types in MS Radio Access Capability (Rel-4)	Siemens	Revised
GP-021244	CR 44.060-134 rev 3 Rules for inclusion of Access Technology Types in MS Radio Access Capability (Rel-4)	Siemens	Approved
GP-020751	CR 44.060-135 rev 1 Rules for inclusion of Access Technology Types in MS Radio Access Capability (Rel 5)	Siemens	Revised
GP-021083	CR 44.060-135 rev 2 Rules for inclusion of Access Technology Types in MS Radio Access Capability (Rel-5)	Siemens	Revised
GP-021245	CR 44.060-135 rev 3 Rules for inclusion of Access Technology Types in MS Radio Access Capability (Rel-5)	Siemens	Approved
GP-020697	CR 44.060-136: Basic CR for Section 5 of 44.060 (Rel-5)	TSG GERAN WG2	Approved
GP-020698	CR 44.060-137: Basic CR for Section 6 of 44.060 (Rel-5)	TSG GERAN WG2	Approved
GP-020701	CR 44.060-139: Minor corrections in 44.060 (Rel-4)	TSG GERAN WG2	Approved
GP-020940	CR 44.060-140 MS behaviour upon PFI change (Rel 4)	Siemens	Approved
GP-020941	CR 44.060-141 MS behaviour upon PFI change (Rel 5)	Siemens	Withdraw
GP-020602	CR 44.060-142 T3158 Updating value (Rel 5)	Nokia	Revised
GP-021199	CR 44.060-142 rev 1 T3158 Updating value (Rel-5)	Nokia	Revised
GP-021228	CR 44.060-142 rev 2 T3158 Updating value (Rel-5)	Nokia	Approved
GP-020615	CR 44.060-143 Packet Broadcast of LCS Assistance Data (Rel 5)	Ericsson	Withdraw
GP-020656	CR 44.060-144 Removal of Fixed Allocation (Rel 5)	Nokia	Revised
GP-021277	CR 44.060-144 rev 1 Removal of Fixed Allocation (Rel-5)	Nokia	Approved
GP-020753	CR 44.060-145 Coding of Repeated UTRAN TDD Neighbour Cells struct in the PMO message (Rel 4)	Siemens	Rejected
GP-020754	CR 44.060-146 Coding of Repeated UTRAN TDD Neighbour Cells struct in the PMO message (Rel 5)	Siemens	Rejected

Tdoc	Title	Source	Status
GP-020756	CR 44.060-147 Wrong description of Bitmap type reporting in Packet Enhanced Measurement Report message (Rel 4)	Siemens	Revised
GP-021089	CR 44.060-147 rev 1 Wrong description of Bitmap type reporting in Packet Enhanced Measurement Report message (Rel-4)	Siemens	Approved
GP-020757	CR 44.060-148 Wrong description of Bitmap type reporting in Packet Enhanced Measurement Report message (Rel 5)	Siemens	Revised
GP-021090	CR 44.060-148 rev 1 Wrong description of Bitmap type reporting in Packet Enhanced Measurement Report message (Rel-5)	Siemens	Approved
GP-020759	CR 44.060-149 Missing semicolon in PSI3ter message (Rel 4)	Siemens	Withdraw
GP-020760	CR 44.060-150 Missing semicolon in PSI3ter message (Rel 5)	Siemens	Withdraw
GP-020762	CR 44.060-151 Wrong bracket in Packet Polling Request message (Rel 4)	Siemens	Revised
GP-021091	CR 44.060-151 rev 1 Wrong bracket in Packet Polling Request message (Rel-4)	Siemens	Approved
GP-020763	CR 44.060-152 Wrong bracket in Packet Polling Request message (Rel 5)	Siemens	Approved
GP-020765	CR 44.060-153 Wrong bracket in PSI3ter message (Rel 4)	Siemens	Revised
GP-021092	CR 44.060-153 rev 1 Wrong bracket in PSI3ter message (Rel-4)	Siemens	Approved
GP-020766	CR 44.060-154 Wrong bracket in PSI3ter message (Rel 5)	Siemens	Revised
GP-021093	CR 44.060-154 rev 1 Wrong bracket in PSI3ter message (Rel-5)	Siemens	Approved
GP-020768	CR 44.060-155 Wrong reference in Packet Downlink Assignment message (Rel 4)	Siemens	Revised
GP-021095	CR 44.060-155 rev 1 Wrong reference in Packet Downlink Assignment message (Rel-4)	Siemens	Approved
GP-020769	CR 44.060-156 Wrong reference in Packet Downlink Assignment message (Rel 5)	Siemens	Revised
GP-021096	CR 44.060-156 rev 1 Wrong reference in Packet Downlink Assignment message (Rel-5)	Siemens	Approved
GP-020829	CR 44.060-157 Missing reference to CSN.1 specification (Rel 5)	Siemens	Approved
GP-020834	CR 44.060-158 Contention resolution in GERAN Iu mode - message definitions (Rel 5)	Siemens	Postponed
GP-020841	CR 44.060-159 Multiple TBF Downlink Assignment (Rel 5)	Siemens	Revised
GP-021078	CR 44.060-159 rev 1 Multiple TBF Downlink Assignment (Rel-5)	Siemens	Postponed
GP-020842	CR 44.060-160 Multiple TBF Uplink Assignment (Rel 5)	Siemens	Revised
GP-021079	CR 44.060-160 rev 1 Multiple TBF Uplink Assignment (Rel-5)	Siemens	Postponed
GP-020843	CR 44.060-161 Multiple TBF Resource Request & Multiple TBF Downlink Ack/Nack (Rel 5)	Siemens	Withdraw
GP-020844	CR 44.060-162 Multiple TBF Timeslot Reconfigure (Rel 5)	Siemens	Postponed
GP-020845	CR 44.060-163 PRACH establishment causes (Rel 5)	Siemens	Revised
GP-021220	CR 44.060-163 rev 1 PRACH establishment causes (Rel-5)	Siemens	Approved
GP-020668	CR 44.060-165 Clarification of the Packet Uplink Dummy control block use (Rel 4)	Philips Semiconductors	Rejected
GP-020722	CR 44.060-166 Clarification of the Packet Uplink Dummy control block use (Rel 5)	Philips Semiconductors	Revised
GP-021074	CR 44.060-166 rev 1 Clarification of the Packet Uplink Dummy control block use (Rel-5)	Philips	Withdraw
GP-020875	CR 44.060-167 Packet Control Acknowledgement message (Rel 5)	Nokia	Postponed
GP-020877	CR 44.060-168s Packet DBPSCH Assignment (Rel 5)	Nokia	Postponed
GP-020805	CR 44.060-169 Introduction of multiple TBFs to section 7 (Rel 5)	Siemens	Withdraw
GP-020869	CR 44.060-170 LCS Broadcast Assistance Data in a new PSI message (Rel 5)	Nokia	Postponed
GP-020907	CR 44.060-171 CSN-1 fault in the PACKET UPLINK ACK/NACK message (Rel 4)	Ericsson	Revised
GP-021076	CR 44.060-171 rev 1 CSN-1 fault in the PACKET UPLINK ACK/NACK message (Rel-4)	Ericsson	Approved
GP-020908	CR 44.060-172 CSN-1 fault in the PACKET UPLINK ACK/NACK message (Rel 5)	Ericsson	Revised
GP-021077	CR 44.060-172 rev 1 CSN-1 fault in the PACKET UPLINK ACK/NACK message (Rel-5)	Ericsson	Approved

Tdoc	Title	Source	Status
GP-020911	CR 44.060-173 CS parameters in the MS Radio Capabilities IE (Rel 4)	Ericsson	Rejected
GP-020912	CR 44.060-174 CS parameters in the MS Radio Capabilities IE (Rel 5)	Ericsson	Rejected
GP-020949	CR 44.060-175 Initial 3G Neighbour cell reporting in dedicated mode (Rel 4)	Nokia	Revised
GP-021125	CR 44.060-175 rev 1 Initial 3G Neighbour cell reporting in dedicated mode (Rel-4)	Nokia	Approved
GP-020950	CR 44.060-176 Initial 3G Neighbour cell reporting in dedicated mode (Rel 5)	Nokia	Revised
GP-021126	CR 44.060-176 rev 1 Initial 3G Neighbour cell reporting in dedicated mode (Rel-5)	Nokia	Approved
GP-020952	CR 44.060-177 Correction to indexing mechanism for UTRAN frequencies (Rel 4)	Nokia	Withdraw
GP-020953	CR 44.060-178 Correction to indexing mechanism for UTRAN frequencies (Rel 5)	Nokia	Withdraw
GP-020975	CR 44.060-179 PLMN-Id description on PBCCH (Rel-4)	Alcatel	Withdraw
GP-020976	CR 44.060-180 PLMN-Id description on PBCCH (Rel-5)	Alcatel	Withdraw
GP-020992	CR 44.060-181 Corrections to Packet uplink assignment procedure (Rel 4)	Nortel Networks	Revised
GP-021086	CR 44.060-181 rev 1 Corrections to Packet uplink assignment procedure (Rel-4)	Nortel Networks	Revised
GP-021283	CR 44.060-181 rev 2 Corrections to Packet uplink assignment procedure (Rel-4)	Nortel Networks	Approved
GP-020993	CR 44.060-182 Corrections to Packet uplink assignment procedure (Rel 5)	Nortel Networks	Revised
GP-021087	CR 44.060-182 rev 1 Corrections to Packet uplink assignment procedure (Rel-5)	Nortel Networks	Revised
GP-021284	CR 44.060-182 rev 2 Corrections to Packet uplink assignment procedure (Rel-5)	Nortel Networks	Approved
GP-021140	CR 44.060-183 Correction of RLC/MAC procedures during contention resolution (Rel-5)	Siemens	Rejected
GP-021197	CR 44.060-184 Correction to PMO procedure initiated in Packet Idle Mode (Rel-4)	Alcatel	Postponed
GP-021198	CR 44.060-185 Correction to PMO procedure initiated in Packet Idle Mode (Rel-5)	Alcatel	Postponed
GP-021240	CR 44.060-186 Contradiction in polling response procedure (Rel-5)	Philips Semiconductors	Postponed
GP-021279	CR 44.060-187 Correction to T3184 applicability (Rel-4)	Nokia	Approved
GP-021280	CR 44.060-188 Correction to T3184 applicability (Rel-5)	Nokia	Approved
GP-020962	CR 44.901-001 rev 1 External NACC: Introduction of a possibility to start and to stop event driven transmission of RAN INFORMATION messages (Rel 5)	Ericsson	Revised
GP-021230	CR 44.901-001 rev 2 External NACC: Introduction of a possibility to start and to stop event driven transmission of RAN INFORMATION messages (Rel 5)	Ericsson	Approved
GP-020616	CR 45.001-011 Packet Broadcast of LCS Assistance Data (Rel 5)	Ericsson	Withdraw
GP-020813	CR 45.001-012 Alignment of number of codecs for WB-AMR to proposed set (Rel 5)	Ericsson	Revised
GP-021168	CR 45.001-012 rev 1 Alignment of number of codecs for WB-AMR to proposed set (Rel 5)	Ericsson	Approved
GP-020885	CR 45.001-013 Decimal Sign (Rel 5)	Nokia	Approved
GP-020888	CR 45.001-014 Introduction of AMR-WB on 8PSK TCH (Rel 5)	Nokia	Revised
GP-021204	CR 45.001-014 rev 1 Introduction of AMR-WB on 8PSK TCH (Rel 5)	Nokia	Approved
GP-020891	CR 45.001-015 Removal of AMR-WB codec modes from TCH/WFS (Rel 5)	Nokia	Withdraw
GP-020617	CR 45.002-042 Packet Broadcast of LCS Assistance Data (Rel 5)	Ericsson	Withdraw
GP-020646	CR 45.002-043 Removal of Fixed Allocation (Rel 5)	Nokia	Approved
GP-020724	CR 45.002-044 Extended BCCH and SMSCB radio conflict (Rel 4)	Philips Semiconductors	Rejected
GP-020725	CR 45.002-045 Extended BCCH and SMSCB radio conflict (Rel 5)	Philips Semiconductors	Rejected
GP-020886	CR 45.002-047 Multislot configuration with EPC (Rel 5)	Nokia	Revised
GP-021124	CR 45.002-047 rev 1 Multislot configuration with EPC (Rel 5)	Nokia	Revised

Tdoc	Title	Source	Status
GP-021205	CR 45.002-047 rev 2 Multislot configuration with EPC (Rel 5)	Nokia	Approved
GP-020889	CR 45.002-048 Introduction of AMR-WB on 8PSK TCH (Rel 5)	Nokia	Revised
GP-021206	CR 45.002-048 rev 1 Introduction of AMR-WB on 8PSK TCH (Rel 5)	Nokia	Approved
GP-021014	CR 45.002-049 Definition of "basic physical subchannel" (Release 5)	Siemens	Rejected
GP-021015	CR 45.002-050 Definition of octal traffic channels (Release 5)	Siemens	Approved
GP-020894	CR 45.003-016 rev 1 Channel coding for O-TCH/WFS and O-TCH/WHS (Rel 5)	Nokia	Postponed
GP-020618	CR 45.003-017 Packet Broadcast of LCS Assistance Data (Rel 5)	Ericsson	Withdraw
GP-020887	CR 45.003-018 Cleaning & Updates (Rel 5)	Nokia	Revised
GP-021203	CR 45.003-018 rev 1 Cleaning & Updates (Rel 5)	Nokia	Approved
GP-020892	CR 45.003-019 Removal of AMR-WB codec modes from TCH/WFS (Rel 5)	Nokia	Withdraw
GP-020814	CR 45.003-020 Alignment of number of codecs for WB-AMR to proposed set (Rel 5)	Ericsson	Revised
GP-021169	CR 45.003-020 rev 1 Alignment of number of codecs for WB-AMR to proposed set (Rel 5)	Ericsson	Approved
GP-020619	CR 45.005-039 Packet Broadcast of LCS Assistance Data (Rel 5)	Ericsson	Withdraw
GP-020809	CR 45.005-040 Correction of AMR FR inband performance requirement (Rel 4)	Ericsson	Revised
GP-021154	CR 45.005-040 rev 1 Correction of AMR FR inband performance requirement (Rel 4)	Ericsson	Approved
GP-020810	CR 45.005-041 Correction of AMR FR inband performance requirement (Rel 5)	Ericsson	Revised
GP-021155	CR 45.005-041 rev 1 Correction of AMR FR inband performance requirement (Rel 5)	Ericsson	Approved
GP-020815	CR 45.005-042 Alignment of number of codecs for WB-AMR to proposed set (Rel 5)	Ericsson	Revised
GP-021170	CR 45.005-042 rev 1 Alignment of number of codecs for WB-AMR to proposed set (Rel 5)	Ericsson	Approved
GP-020850	CR 45.008-087 rev 1 Conversion of cell re-selection parameters (Rel 4)	Siemens	Withdraw
GP-020851	CR 45.008-088 rev 1 Conversion of cell re-selection parameters (Rel 5)	Siemens	Revised
GP-021231	CR 45.008-088 rev 2 Conversion of cell re-selection parameters (Rel 5)	Siemens	Approved
GP-020650	CR 45.008-091 NBR_RCVD_BLOCKS for 14.4 non-transparent data (Rel 4)	Nokia	Approved
GP-020651	CR 45.008-092 NBR_RCVD_BLOCKS for 14.4 non-transparent data (Rel 5)	Nokia	Approved
GP-020652	CR 45.008-093 Indication of invalid dedicated channel measurement results with EMR (Rel 5)	Nokia	Rejected
GP-020653	CR 45.008-094 MEAN_BEP measurements on SACCH (Rel 5)	Nokia	Approved
GP-020647	CR 45.008-095 Removal of Fixed Allocation (Rel 5)	Nokia	Approved
GP-020854	CR 45.008-099 Usage of CBQ2 (Rel 4)	Siemens	Withdraw
GP-020855	CR 45.008-100 Usage of CBQ2 (Rel 5)	Siemens	Withdraw
GP-020943	CR 45.008-101 Initial 3G Neighbour cell reporting in dedicated mode (Rel 4)	Nokia	Withdraw
GP-020944	CR 45.008-102 Initial 3G Neighbour cell reporting in dedicated mode (Rel 5)	Nokia	Withdraw
GP-020978	CR 45.008-103 Correction and clarification of Enhanced Measurement computation (Rel 4)	Alcatel	Rejected
GP-020979	CR 45.008-104 Correction and clarification of Enhanced Measurement computation (Rel 5)	Alcatel	Rejected
GP-020981	CR 45.008-105 Correction and clarification of time constraints for blind handover (Rel 4)	Alcatel	Rejected
GP-020982	CR 45.008-106 Correction and clarification of time constraints for blind handover (Rel 5)	Alcatel	Rejected
GP-020985	CR 45.008-107 Correction of the initial value of C when entering in packet transfer mode (Rel 4)	Alcatel	Withdraw

Tdoc	Title	Source	Status
GP-020986	CR 45.008-108 Correction of the initial value of C when entering in packet transfer mode (Rel 5)	Alcatel	Approved
GP-020989	CR 45.008-109 Correction SIGN_VAR computation (Rel 4)	Alcatel	Withdraw
GP-020990	CR 45.008-110 Correction SIGN_VAR computation (Rel 5)	Alcatel	Revised
GP-021121	CR 45.008-110 rev 1 Correction SIGN_VAR computation (Rel 5)	Alcatel	Approved
GP-021005	CR 45.008-111 Clarification to priorities between GPRS interference measurements and InterRAT measurements (Rel 4)	Nokia	Approved
GP-021006	CR 45.008-112 Clarification to priorities between GPRS interference measurements and InterRAT measurements (Rel 5)	Nokia	Approved
GP-021024	CR 45.008-113 Iu mode Indication on BCCH in Rel-5 (Rel 5)	Nokia	Revised
GP-021151	CR 45.008-113 rev 1 Iu mode Indication on BCCH in Rel-5 (Rel 5)	Nokia	Approved
GP-021153	CR 45.008-114 Removal of basic physical subchannel references for EPC (Rel 5)	Ericsson	Approved
GP-020648	CR 45.009-011 Active codec set after a RATSCCH AMR_CONFIG_REQ message	Nokia	Approved
GP-020816	CR 45.009-012 Alignment of number of codecs for WB-AMR to proposed set (Rel 5)	Ericsson	Revised
GP-021171	CR 45.009-012 rev 1 Alignment of number of codecs for WB-AMR to proposed set (Rel 5)	Ericsson	Approved
GP-020890	CR 45.009-013 Introduction of AMR-WB on 8PSK TCH (Rel 5)	Nokia	Revised
GP-021207	CR 45.009-013 rev 1 Introduction of AMR-WB on 8PSK TCH (Rel 5)	Nokia	Approved
GP-020893	CR 45.009-014 Removal of AMR-WB codec modes from TCH/WFS (Rel 5)	Nokia	Withdraw
GP-021272	CR 45.010-004 Mobile behaviour within reaction time	Philips	Rejected
GP-020678	CR 48.002-003: Introduction of NNSF (Rel-5)	TSG GERAN WG2	Approved
GP-021008	CR 48.008-039 rev 2 Introduction of GERAN Classmark (Rel 5)	Nokia, Siemens	Revised
GP-021192	CR 48.008-039 rev 3 Introduction of GERAN Classmark (Rel-5)	Siemens, Nokia	Revised
GP-021227	CR 48.008-039 rev 4 Introduction of GERAN Classmark (Rel-5)	Siemens, Nokia	Revised
GP-021273	CR 48.008-039 rev 5 Introduction of GERAN Classmark (Rel-5)	Siemens, Nokia	Approved
GP-020775	CR 48.008-042 rev 2 Exchange of cell traffic load information using the handover procedure (Rel-5)	Vodafone	Postponed
GP-020681	CR 48.008-043: Alignment of 8PSK speech codecs references in GERAN specifications (Rel-5)	TSG GERAN WG2	Approved
GP-020818	CR 48.008-045 Alignment of number of codecs for WB-AMR to proposed set (Rel 5)	Ericsson	Revised
GP-021043	CR 48.008-045 rev 1 Alignment of number of codecs for WB-AMR to proposed set (Rel 5)	Ericsson	Revised
GP-021173	CR 48.008-045 rev 2 Alignment of number of codecs for WB-AMR to proposed set (Rel 5)	Ericsson	Postponed
GP-020969	CR 48.018-058 rev 1 Introduction of Global CN-Id when CS paging is done via the PS domain (Rel 5)	Ericsson	Postponed
GP-020967	CR 48.018-061 rev 2 Introduction of flow control per PFC (Rel 5)	Ericsson	Postponed
GP-020719	CR 48.018-063 rev 2: [External NACC] Re-introduction of event-driven multiple reports and other corrections (Rel-5)	TSG GERAN WG2	Approved
GP-020971	CR 48.018-065 rev 1 Correction to PFC transfer procedure upon cell change (Rel 4)	Alcatel	Revised
GP-021072	CR 48.018-065 rev 2 Correction to PFC transfer procedure upon cell change (Rel-4)	Alcatel	Revised
GP-021247	CR 48.018-065 rev 3 Correction to PFC transfer procedure upon cell change (Rel-4)	Alcatel	Approved
GP-020972	CR 48.018-066 rev 1 Correction to PFC transfer procedure upon cell change (Rel 5)	Alcatel	Revised
GP-021073	CR 48.018-066 rev 2 Correction to PFC transfer procedure upon cell change (Rel-5)	Alcatel	Revised
GP-021248	CR 48.018-066 rev 3 Correction to PFC transfer procedure upon cell change (Rel-5)	Alcatel	Approved
GP-020620	CR 48.018-067 Addition of PTP BVCI parameter for LCS PDUs on the Gb Interface (Rel 5)	Siemens	Approved
GP-020655	CR 48.018-068 Removal of Fixed Allocation (Rel 5)	Nokia	Withdraw

Tdoc	Title	Source	Status
GP-020790	CR 48.018-069 Optional guard timer in the FLUSH procedure (Rel 5)	Motorola	Postponed
GP-020682	CR 48.058-007: Alignment of 8PSK speech codecs references in GERAN specifications (Rel-5)	TSG GERAN WG2	Approved
GP-020699	CR 48.058-008: Introduction of TFO transparent container I.E. (Rel-5)	TSG GERAN WG2	Rejected
GP-020817	CR 48.058-009 Alignment of number of codecs for WB-AMR to proposed set (Re -5)	Ericsson	Revised
GP-021042	CR 48.058-009 rev 1 Alignment of number of codecs for WB-AMR to proposed set (Re -5)	Ericsson	Revised
GP-021172	CR 48.058-009 rev 2 Alignment of number of codecs for WB-AMR to proposed set (Rel -5)	Ericsson	Approved
GP-020523	CR 48.060-002 to define and introduce "Configuration" frames (Rel 5)	TFO sub-group	Approved
GP-020819	CR 48.060-003 Introduction of WB-AMR (Rel 5)	Ericsson	Revised
GP-021044	CR 48.060-003 rev 1 Introduction of WB-AMR (Rel 5)	Ericsson	Revised
GP-021201	CR 48.060-003 rev 2 Introduction of WB-AMR (Rel 5)	Ericsson	Revised
GP-021251	CR 48.060-003 rev 3 Introduction of WB-AMR (Rel 5)	Ericsson	Approved
GP-020524	CR 48.061-002 to introduce "Configuration" frames (Rel 5)	TFO sub-group	Approved
GP-020577	CR 51.010-1-466 rev 2 Introduction of AMR layer 1 tests, reference sensitivity	Motorola	Revised
GP-021101	CR 51.010-1-466 rev 3 Introduction of AMR layer 1 tests, reference sensitivity	Motorola	Approved
GP-020578	CR 51.010-1-467 rev 2 Introduction of AMR layer 1 tests, Co-channel rejection	Motorola	Revised
GP-021102	CR 51.010-1-467 rev 3 Introduction of AMR layer 1 tests, Co-channel rejection	Motorola	Approved
GP-020579	CR 51.010-1-468 rev 2 Introduction of AMR layer 1 tests, section 14 general part	Motorola	Approved
GP-020528	CR 51.010-1-618 Correction to macro in section 42.1.3.1.2 - Uplink data transfer, dynamic allocation	Panasonic	Postponed
GP-020530	CR 51.010-1-619 section 34.2.6: Addition of test of short message type 0	Rohde & Schwarz, Vodafone D2	Revised
GP-021058	CR 51.010-1-619 rev 1 section 34.2.6: Addition of test of short message type 0	Vodafone	Approved
GP-020532	CR 51.010-1-620 Test cases 44.2.1.2.2 Combined GPRS attach / GPRS only attach accepted	Rohde & Schwarz	Approved
GP-020533	CR 51.010-1-621 Test cases 46.1.2.3.2 Collision of SABM and DISC	Rohde & Schwarz	Rejected
GP-020534	CR 51.010-1-622 Test cases 46.1.2.5.3 Sending FRMR due to reception of an I frame information field exceeding the maximum length	Rohde & Schwarz	Approved
GP-020535	CR 51.010-1-623 Test cases 44.2.3.3.3 Periodic routing area updating / no cell available / network mode I	Rohde & Schwarz	Approved
GP-020537	CR 51.010-1-624 Test cases: 46.2.2.4.1 Response from MS on receiving XID request from the SS	Rohde & Schwarz	Approved
GP-020538	CR 51.010-1-625 Test cases: 46.2.2.4.2 Response from MS on receiving an XID request from the SS with an unassigned entity number	Rohde & Schwarz	Approved
GP-020548	CR 51.010-1-626 on Correction to reference clause	MCC	Approved
GP-020565	CR 51.010-1-627 Sec. TC 34.2.7 Test of the replace mechanism for SM type 1-7	Siemens	Revised
GP-021051	CR 51.010-1-627 rev 1 Sec. TC 34.2.7 Test of the replace mechanism for SM type 1-7	Siemens	Approved
GP-020566	CR 51.010-1-628 Annex 6 E-OTD Accuracy Measurement Test Environment	Ericsson	Withdraw
GP-020568	CR 51.010-1-629 Addition of E-OTD Interference Performance Tests	Ericsson	Revised
GP-021106	CR 51.010-1-629 rev 1 Addition of E-OTD Interference Performance Tests	Ericsson	Approved
GP-020569	CR 51.010-1-630 Addition of E-OTD Multipath Performance Tests	Ericsson	Revised
GP-021108	CR 51.010-1-630 rev 1 Addition of E-OTD Multipath Performance Tests	Ericsson	Approved
GP-020570	CR 51.010-1-631 Addition of IE to an existing MT LR E-OTD tests	Ericsson	Revised

Tdoc	Title	Source	Status
GP-021067	CR 51.010-1-631 rev 1 Addition of IE to an existing MT LR E-OTD tests	Ericsson	Approved
GP-020571	CR 51.010-1-632 Addition of IE to an existing MT LR E-OTD test Privacy Options (Location allowed if no response)	Ericsson	Revised
GP-021068	CR 51.010-1-632 rev 1 Addition of IE to an existing MT LR E-OTD test Privacy Options (Location allowed if no response)	Ericsson	Approved
GP-020572	CR 51.010-1-633 Addition of IE to an existing MT LR E-OTD test Privacy Options (Loc. not allowed if no response)	Ericsson	Revised
GP-021069	CR 51.010-1-633 rev 1 Addition of IE to an existing MT LR E-OTD test Privacy Options (Loc. not allowed if no response)	Ericsson	Approved
GP-020574	CR 51.010-1-634 TC 44.2.3.2.3.3.2 + TC 44.2.1.2.2.3.2 - suppression of the test on the Detach Type for the latest Detach Request	Philips	Approved
GP-020575	CR 51.010-1-635 TC 44.2.3.1.5 – modification to allow GPRS detach or GSM detach first	Philips	Approved
GP-020582	CR 51.010-1-636 Network Induced Test on TCH Radio Channel for Mobile Supporting MS-Based A-GPS	Qualcomm	Withdraw
GP-020583	CR 51.010-1-637 Network Induced Test on TCH Radio Channel for Mobile Supporting MS-Assisted A-GPS	Qualcomm	Withdraw
GP-020584	CR 51.010-1-638 MT-LR Location Notification for Mobile Supporting MS-Based A-GPS	Qualcomm	Withdraw
GP-020585	CR 51.010-1-639 MT-LR Location Notification for Mobile Supporting MS-Assisted A-GPS	Qualcomm	Withdraw
GP-020586	CR 51.010-1-640 MT-LR Privacy Options - Location Not Allowed for Mobiles Supporting MS-Based A-GPS	Qualcomm	Withdraw
GP-020587	CR 51.010-1-641 MT-LR Privacy Options - Location Not Allowed for Mobiles Supporting MS-Assisted A-GPS	Qualcomm	Withdraw
GP-020588	CR 51.010-1-642 MT-LR Privacy Options - Location Allowed for Mobiles Supporting MS-Based A-GPS	Qualcomm	Withdraw
GP-020589	CR 51.010-1-643 MT-LR Privacy Options - Location Allowed for Mobiles Supporting MS-Assisted A-GPS	Qualcomm	Withdraw
GP-020590	CR 51.010-1-644 LCS Classmark Interrogation test case corrections for MS-Based A-GPS	Qualcomm	Withdraw
GP-020591	CR 51.010-1-645 LCS Classmark Interrogation test case corrections MS-Assisted A-GPS	Qualcomm	Withdraw
GP-020592	CR 51.010-1-646 NI LCS test case correction for Emergency Call on an SDCCH, Idle, no IMSI for MS-Based A-GPS	Qualcomm	Withdraw
GP-020593	CR 51.010-1-647 NI LCS test case correction for Emergency Call on an SDCCH, Idle, no IMSI for MS-Assisted A-GPS	Qualcomm	Withdraw
GP-020594	CR 51.010-1-648 Network Induced LCS test case correction for Emergency Call on an SDCCH for MS-Based A-GPS	Qualcomm	Withdraw
GP-020595	CR 51.010-1-649 NI LCS test case for Emergency Call on an SDCCH correction for MS-Assisted A-GPS	Qualcomm	Withdraw
GP-020598	CR 51.010-1-650 #20.22.4 - Too short time for C32 calculation - Time for RLA_P dependent on MS paging block	Ericsson	Revised
GP-021113	CR 51.010-1-650 rev 1 #20.22.4 - Too short time for C32 calculation - Time for RLA_P dependent on MS paging block	Ericsson	Approved
GP-020599	CR 51.010-1-651 #44.2.2.1.4 - GPRS detach / abnormal cases / GMM common procedure collision	Ericsson	Withdraw
GP-020600	CR 51.010-1-652 #44.2.3.1.7 - Routing area updating / abnormal cases / change of cell during routing area updating procedure	Ericsson	Revised
GP-020639	CR 51.010-1-652 rev 1 #Routing area updating / abnormal cases / change of cell during routing area updating procedure	Ericsson	Revised
GP-021062	CR 51.010-1-652 rev 2 #Routing area updating / abnormal cases / change of cell during routing area updating procedure	Ericsson	Approved
GP-020601	CR 51.010-1-653 #44.2.3.2.8 - Combined routing area updating / abnormal cases / change of cell into new routing area - WITHDRAWN	Ericsson	Revised
GP-020640	CR 51.010-1-653 rev 1 #GPRS attach / abnormal cases / change of cell into new routing area	Ericsson	Revised

Tdoc	Title	Source	Status
GP-021063	CR 51.010-1-653 rev 2 #GPRS attach / abnormal cases / change of cell into new routing area	Ericsson	Approved
GP-020606	CR 51.010-1-654 Corrections in section 40 GPRS default conditions, message contents and macros	Rohde & Schwarz	Revised
GP-021054	CR 51.010-1-654 rev 1 Corrections in section 40 GPRS default conditions, message contents and macros	Rohde & Schwarz	Revised
GP-021182	CR 51.010-1-654 rev 2 Corrections in section 40 GPRS default conditions, message contents and macros	Rohde & Schwarz	Approved
GP-020607	CR 51.010-1-655 Section 40.2.3 Default contents of Layer 2 messages	Rohde & Schwarz	Revised
GP-021055	CR 51.010-1-655 rev 1 Section 40.2.3 Default contents of Layer 2 messages	Rohde & Schwarz	Approved
GP-020608	CR 51.010-1-656 Test case 22.4 GPRS Uplink Power Control - Independence of TS Power Control	Rohde & Schwarz	Approved
GP-020623	CR 51.010-1-657 Test case 46.1.2.1.2 Data transmission in unprotected mode	Rohde & Schwarz	Approved
GP-020624	CR 51.010-1-658 Test cases 46.1.2.* Correction of transferred amount of data	Rohde & Schwarz	Approved
GP-020625	CR 51.010-1-659 Correction to section 42.1.1.4.3 - Packet Channel Request / Access persistence control on PRACH / Successive Attempts	Nokia	Approved
GP-020626	CR 51.010-1-660 Correction to section 42.1.3.2.10 - Default messages / PACKET UPLINK ASSIGNMENT message (single block allocation)	Nokia	Approved
GP-020627	CR 51.010-1-661 Correction to section 44.2.1.2.2 - Combined GPRS attach / GPRS only attach accepted (Rel-4)	Nokia	Revised
GP-021060	CR 51.010-1-661 rev 1 Correction to section 44.2.1.2.2 - Combined GPRS attach / GPRS only attach accepted (Rel-4)	Nokia	Approved
GP-020628	CR 51.010-1-662 Correction to section 44.2.2.1.4 - GPRS detach / abnormal cases / GMM common procedure collision (Rel-4)	Nokia	Approved
GP-020629	CR 51.010-1-663 Correction to section 44.2.3.2.3 - Combined routing area updating / RA only accepted (Rel-4)	Nokia	Revised
GP-021064	CR 51.010-1-663 rev 1 Correction to section 44.2.3.2.3 - Combined routing area updating / RA only accepted (Rel-4)	Nokia	Approved
GP-020630	CR 51.010-1-664 Correction to section 70.2 - Network Induced Location Request (Rel-4)	Nokia	Approved
GP-020631	CR 51.010-1-665 Test cases 26.16.7 and 26.16.8 : AMR Signalling / Directed Retry	Alcatel	Approved
GP-020632	CR 51.010-1-666 Test case 44.2.3.2.7 : Combined routing area updating / abnormal cases / attempt counter check / procedure timeout	Alcatel	Approved
GP-020633	CR 51.010-1-667 Test case 41.2.2.3 : Random references for one phase packet access	Alcatel	Approved
GP-020634	CR 51.010-1-668 Test case 42.5.5.2 and 42.5.5.3 : Two PDCHs but only one cell needed	Setcom	Approved
GP-020635	CR 51.010-1-669 Test case 42.5.4.3 : Two PDCHs but only one cell needed	Setcom	Approved
GP-020636	CR 51.010-1-670 Test cases 42.1.2.1.6: PSI2 in initial condition was corrected – WITHDRAWN	Setcom	Revised
GP-021040	CR 51.010-1-670 rev 1 Test cases 42.1.2.1.6: PSI2 in initial condition was corrected	Setcom	Approved
GP-020637	CR 51.010-1-671 Test cases 42.2.2.7: PACKET UPLINK ACK/NACK should be sent on only one RLC/MAC Control Block	Setcom	Revised
GP-021116	CR 51.010-1-671 rev 1 Test cases 42.2.2.7: PACKET UPLINK ACK/NACK should be sent on only one RLC/MAC Control Block	Setcom	Approved
GP-020638	CR 51.010-1-672 Test cases 42.1.2.2.3: PSI2 corrected according to section 40 - WITHDRAWN	Setcom	Revised
GP-021041	CR 51.010-1-672 rev 1 Test cases 42.1.2.2.3: PSI2 corrected according to section 40	Setcom	Approved
GP-020657	CR 51.010-1-673 Removal of Fixed Allocation in section 40.x - GPRS Default Conditions, Message Contents and Macros	Nokia	Revised

Tdoc	Title	Source	Status
GP-021112	CR 51.010-1-673 rev 1 Removal of Fixed Allocation in section 40.x - GPRS Default Conditions, Message Contents and Macros	Nokia	Approved
GP-020658	CR 51.010-1-674 Removal of Fixed Allocation in section 41.x - GPRS Paging, TBF establishment/release and DCCH related procedures	Nokia	Approved
GP-020659	CR 51.010-1-675 Removal of Fixed Allocation in section 42.x - Test of Medium Access Control (MAC) protocol	Nokia	Approved
GP-020660	CR 51.010-1-676 Removal of Fixed Allocation in section 43.x - RLC Test Cases	Nokia	Approved
GP-020661	CR 51.010-1-677 Removal of Fixed Allocation in section 50.x - EGPRS Default Conditions, Message Contents and Macros	Nokia	Approved
GP-020662	CR 51.010-1-678 Removal of Fixed Allocation in section 51.x - EGPRS Paging, TBF establishment/release and DCCH related procedures	Nokia	Approved
GP-020663	CR 51.010-1-679 Removal of Fixed Allocation in section 52.x - EGPRS Test of Medium Access Control (MAC) protocol	Nokia	Approved
GP-020664	CR 51.010-1-680 Removal of Fixed Allocation in section 53.x - Test of EGPRS Radio Link Control (RLC) Protocol	Nokia	Approved
GP-020726	CR 51.010-1-681 TC 41.2.7.1 Change of SS verification mode of MS control block's reception	Philips	Revised
GP-021115	CR 51.010-1-681 rev 1 TC 41.2.7.1 Change of SS verification mode of MS control block's reception	Philips	Withdraw
GP-020729	CR 51.010-1-682 Clause 40 - Timer tolerance for higher layer test cases	Motorola	Revised
GP-021052	CR 51.010-1-682 rev 1 Clause 40 - Timer tolerance for higher layer test cases	Motorola	Approved
GP-020730	CR 51.010-1-683 Clause 26.16 - Adaptive Multi Rate Signalling – RATSCCCH procedures	Motorola	Rejected
GP-020732	CR 51.010-1-684 Clause 70.3 - EOTD Mobile Originated Test Cases – WITDRAWN	Motorola	Withdraw
GP-020735	CR 51.010-1-685 Testcase 51.3.4.2 - Correction of BSN in steps 12 and 15	Setcom	Approved
GP-020736	CR 51.010-1-686 Testcase 51.2.5.1 – Corrections to the value calculation of T3142 used in testcase	Setcom	Approved
GP-020737	CR 51.010-1-687 Testcase 51.3.1.3 - Addition of optional steps to cater to MS reaction time	Setcom	Approved
GP-020738	CR 51.010-1-688 Testcase 51.2.3.6 - Changes to type of allocation and number of octets to transfer used in testcase	Setcom	Revised
GP-021117	CR 51.010-1-688 Testcase 51.2.3.6 - Changes to type of allocation and number of octets to transfer used in testcase	Setcom	Approved
GP-021118	CR 51.010-1-689 rev 1 Testcase 51.2.3.7 - Changes to the number of octets to transfer and coding scheme used	Setcom	Approved
GP-020739	CR 51.010-1-689 Testcase 51.2.3.7 - Changes to the number of octets to transfer and coding scheme used	Setcom	Revised
GP-020740	CR 51.010-1-690 Testcase 51.2.3.1 - Changes to initial conditions and testcase initialisation	Setcom	Approved
GP-020741	CR 51.010-1-691 Testcase 51.2.2.2 - Change in type of access in test procedure to align with testcase	Setcom	Approved
GP-020742	CR 51.010-1-692 Testcase 51.2.1.1 - Removal of SM layer procedures from the testcase	Setcom	Approved
GP-020743	CR 51.010-1-693 Testcase 51.2.2.2 - Change in Step1 of testcase to align with test procedure	Setcom	Withdraw
GP-020744	CR 51.010-1-694 Testcase 51.2.2.3 – Change to the initial conditions and addition of optional Location Update procedure Macro after Step-7	Setcom	Approved
GP-020745	CR 51.010-1-695 Testcase 51.2.2.4 - Changes to the value calculation of T3146 used in the testcase	Setcom	Approved
GP-020746	CR 51.010-1-696 Testcase 51.2.2.5 - Changes to test procedure and initial conditions	Setcom	Approved

Tdoc	Title	Source	Status
GP-020777	CR 51.010-1-697 clause 44.2.2.1.4: Additional step added	Anite	Withdraw
GP-020778	CR 51.010-1-698 clause 44.2.2.1.6 GPRS detach / accepted / GPRS/IMSI detach	Anite	Rejected
GP-020779	CR 51.010-1-699 clause 44.2.2.1.9: Additonnal detail at step 8	Anite	Revised
GP-021061	CR 51.010-1-699 rev 1 clause 44.2.2.1.9: Additonnal detail at step 8	Anite	Approved
GP-020780	CR 51.010-1-700 clause 44.2.3.3.3; Periodic routing area update / no cell available / network mode I	Anite	Revised
GP-021065	CR 51.010-1-700 rev 1 clause 44.2.3.3.3; Periodic routing area update / no cell available / network mode I	Anite	Approved
GP-020781	CR 51.010-1-701 clause 14.16.1 and 14.16.2.1; GPRS Receiver Tests cannot use Loopback Test Mode (b) for USF tests	Anite	Withdraw
GP-020782	CR 51.010-1-702 clause 20.22.16 - Correction of Procedure	Anite	Approved
GP-020783	CR 51.010-1-703 clause 20.22.27 - Removal of testcase	Anite	Approved
GP-020785	CR 51.010-1-704 clause 26.6.5.1 , 26.6.5.2, 26.6.5.4 and 26.12.2.1	Anite	Approved
GP-020786	CR 51.010-1-705 clause 41.2.3.8 - Correction sequence	Anite	Approved
GP-020787	CR 51.010-1-706 clause 42.1.1.4.1 - Correction of Procedure Initial conditions	Anite	Approved
GP-020788	CR 51.010-1-707 clause 42.1.2.1.3.1 - Correction of Procedure Initial conditions	Anite	Approved
GP-020789	CR 51.010-1-708 clause 42.3.1.1.3 - Correction of Procedure and Test Requirements	Anite	Approved
GP-020800	CR 51.010-1-709 TC 41.3.1.1 TBF Release / Uplink / Normal / MS initiated / Acknowledged mode	Mitshubishi	Withdraw
GP-020895	CR 51.010-1-710 Correction to sections 44.2.3.2.1; 44.2.3.2.5	Setcom	Withdraw
GP-020896	CR 51.010-1-711 Correction to sections 44.2.3.2.10	Setcom	Approved
GP-020897	CR 51.010-1-712 Correction to sections 44.2.3.3.3	Setcom	Withdraw
GP-020898	CR 51.010-1-713 Wrong PDP contexts in 46.2.2.4.1	Setcom	Approved
GP-020899	CR 51.010-1-714 Uplink data transfer is not needed in testcase 46.1.2.2.1.3	Setcom	Approved
GP-020900	CR 51.010-1-715 Wrong precision of the expected N-PDU Number in Testcase 46.2.2.1.3	Setcom	Approved
GP-020901	CR 51.010-1-716 Wrong precision in step 4 , Testcase 46.2.2.1.1	Setcom	Rejected
GP-020902	CR 51.010-1-717 The Unacknowledged bitmap is not correct in testcase 46.1.2.2.2.4	Setcom	Revised
GP-021178	CR 51.010-1-717 rev 1 The Unacknowledged bitmap is not correct in testcase 46.1.2.2.2.4	Setcom	Approved
GP-020903	CR 51.010-1-718 Correction to sections 44.2.1.2.6; 44.2.3.2.1; 44.2.3.2.5;	Setcom	Approved
GP-020904	CR 51.010-1-719 deletion of T200 is step 4 , testcase 46.2.2.5	Setcom	Approved
GP-020935	CR 51.010-1-720 clause 42.4.2.2.1.3 - Correction of Procedure Method of test	Anite	Approved
GP-020936	CR 51.010-1-721 Section 40, GPRS default conditions, message contents and macros - addition of missing tables and rationalisation of ARFCN allocation	Anite	Revised
GP-021046	CR 51.010-1-721 rev 1 Section 40, GPRS default conditions, message contents and macros - addition of missing tables and rationalisation of ARFCN allocation	Anite	Revised
GP-021056	CR 51.010-1-721 rev 2 Section 40, GPRS default conditions, message contents and macros - addition of missing tables and rationalisation of ARFCN allocation	Anite	Approved
GP-020997	CR 51.010-1-722 GPRS Test Cases PTMSI Signature handling	TTPCom, Anite	Revised
GP-021059	CR 51.010-1-722 rev 1 GPRS Test Cases PTMSI Signature handling	TTPCom, Anite	Rejected
GP-021036	CR 51.010-1-723 E-OTD Accuracy, Interference Performance Tests, 8PSK BCCH	AT&T Wireless	Revised
GP-021109	CR 51.010-1-723 rev 1 E-OTD Accuracy, Interference Performance Tests, 8PSK BCCH	AT&T Wireless	Approved
GP-021037	CR 51.010-1-724 E-OTD Accuracy, Multipath Performance Test, 8PSK	AT&T Wireless	Revised

Tdoc	Title	Source	Status
GP-021110	CR 51.010-1-724 rev 1 E-OTD Accuracy, Multipath Performance Test, 8PSK	AT&T Wireless	Approved
GP-021038	CR 51.010-1-725 Modification to Annex 6 for E-OTD Accuracy Measurement Test Environment	AT&T Wireless	Revised
GP-021104	CR 51.010-1-725 rev 1 Modification to Annex 6 for E-OTD Accuracy Measurement Test Environment	AT&T Wireless	Revised
GP-021120	CR 51.010-1-725 rev 2 Modification to Annex 6 for E-OTD Accuracy Measurement Test Environment	AT&T Wireless	Approved
GP-021047	CR 51.010-1-726 Section 40, GPRS default conditions, message contents and macros - editorial change: PCS column moved next to GSM700 and GSM850 columns	Anite	Revised
GP-021057	CR 51.010-1-726 rev 1 Section 40, GPRS default conditions, message contents and macros - editorial change: PCS column moved next to GSM700 and GSM850 columns	Anite	Approved
GP-021103	CR 51.010-1-727 Timer 3198 is not respected in test case 41.3.1.1	Setcom	Withdraw
GP-021111	CR 51.010-1-728 E-OTD Sensitivity Performance	AT&T Wireless	Approved
GP-021066	CR 51.010-1-729 Contradiction in test case 31.8.6.1 to core specification 3GPP TS 04.88	Cetecom	Approved
GP-021179	CR 51.010-1-730 rev 1 LCS Classmark Interrogation test case corrections for MS-Based A-GPS	Qualcomm	Approved
GP-021158	CR 51.010-1-731 rev 1 LCS Classmark Interrogation test case corrections MS-Assisted A-GPS	Qualcomm	Rejected
GP-021159	CR 51.010-1-732 rev 1 NI LCS test case correction for Emergency Call on an SDCCH, Idle, no IMSI for MS-Based A-GPS	Qualcomm	Approved
GP-021160	CR 51.010-1-733 rev 1 NI LCS test case correction for Emergency Call on an SDCCH, Idle, no IMSI for MS-Assisted A-GPS	Qualcomm	Approved
GP-021161	CR 51.010-1-734 rev 1 Network Induced LCS test case correction for Emergency Call on an SDCCH for MS-Based A-GPS	Qualcomm	Rejected
GP-021162	CR 51.010-1-735 rev 1 NI LCS test case for Emergency Call on an SDCCH correction for MS-Assisted A-GPS	Qualcomm	Rejected
GP-021163	CR 51.010-1-736 rev 1 Network Induced Test on TCH Radio Channel for Mobile Supporting MS-Based A-GPS	Qualcomm	Approved
GP-021164	CR 51.010-1-737 rev 1 Network Induced Test on TCH Radio Channel for Mobile Supporting MS-Assisted A-GPS	Qualcomm	Approved
GP-021165	CR 51.010-1-738 rev 1 MT-LR Location Notification for Mobile Supporting MS-Based A-GPS	Qualcomm	Approved
GP-021166	CR 51.010-1-739 rev 1 MT-LR Location Notification for Mobile Supporting MS-Assisted A-GPS	Qualcomm	Approved
GP-021167	CR 51.010-1-740 rev 1 MT-LR Privacy Options - Location Not Allowed for Mobiles Supporting MS-Based A-GPS	Qualcomm	Approved
GP-021174	CR 51.010-1-741 rev 1 MT-LR Privacy Options - Location Not Allowed for Mobiles Supporting MS-Assisted A-GPS	Qualcomm	Approved
GP-021175	CR 51.010-1-742 rev 1 MT-LR Privacy Options - Location Allowed for Mobiles Supporting MS-Based A-GPS	Qualcomm	Approved
GP-021176	CR 51.010-1-743 rev 1 MT-LR Privacy Options - Location Allowed for Mobiles Supporting MS-Assisted A-GPS	Qualcomm	Approved
GP-021210	CR 51.010-1-744 Removal of CR on Incompatibility between PDP context activated and the access procedure in section 42.2.2 1 (Rel-4)	MCC	Approved
GP-021211	CR 51.010-1-745 Removal of CR on Wrong use of PACKTE TIMESLOT RECONFIGURE in 42.3.2.1.1 (Rel-4)	MCC	Approved
GP-021212	CR 51.010-1-746 Removal of Correction to section 42.1.2.1.8.1.1; 42.1.2.1.8.1.2; 42.1.2.1.8.1.3; 42.1.2.1.8.2.1; 42.1.2.1.8.2.2 and 42.1.2.1.8.2.3 - Packet Uplink Assignment / One phase access (Rel-4)	MCC	Approved
GP-020531	CR 51.010-2-047 Applicability Table B.1: Addition of test of short message type 0 (34.2.6)	Rohde & Schwarz, Vodafone D2	Revised
GP-021053	CR 51.010-2-047 rev 1 Applicability Table B.1: Addition of test of short message type 0 (34.2.6)	Vodafone	Approved
GP-020549	CR 51.010-2-048 on Correction to reference clause	MCC	Approved

Tdoc	Title	Source	Status
GP-020573	CR 51.010-2-049 Addition of LCS (EOTD) Performance test cases to the Applicability Table	Ericsson	Revised
GP-021213	CR 51.010-2-049 rev 2 Addition of LCS performance test cases to the Applicability Table B.1	Ericsson	Approved
GP-020596	CR 51.010-2-050 Applicability Table for A-GPS Test Cases for LCS Clause 70 (Rel 4)	Qualcomm	Withdraw
GP-020605	CR 51.010-2-051 Annex B: Correction of applicability table for section 46	Rohde & Schwarz	Approved
GP-020665	CR 51.010-2-052 Removal of applicability of GPRS Fixed Allocation tests (42.2.x) for R99 and Rel-4	Nokia	Approved
GP-020666	CR 51.010-2-053 Removal of EGPRS Fixed Allocation tests (52.2.x) for R99 and Rel-4	Nokia	Approved
GP-020728	CR 51.010-2-054 PICS update for GERAN to UTRAN Handover test cases	Motorola	Approved
GP-020731	CR 51.010-2-055 Applicability table for AMR RATSCCCH test cases	Motorola	Rejected
GP-020733	CR 51.010-2-056 Applicability table for EOTD Mobile Originated test cases – WITHDRAWN	Motorola	Withdraw
GP-020784	CR 51.010-2-057 Annex B - Removal of testcase 20.22.27 of 51.010-1	Anite	Approved
GP-021177	CR 51.010-2-058 rev 1 Applicability Table for A-GPS Test Cases for LCS Clause 70 (Rel 4)	Qualcomm	Revised
GP-021180	CR 51.010-2-058 rev 2 Applicability Table for A-GPS Test Cases for LCS Clause 70 (Rel 4)	Qualcomm	Revised
GP-021181	CR 51.010-2-058 rev 3 Applicability Table for A-GPS Test Cases for LCS Clause 70 (Rel 4)	Qualcomm	Approved
GP-020550	CR 51.010-3-014 on Correction to reference clause	MCC	Approved