



A GLOBAL INITIATIVE

TSG GERAN

TSG SA#15

# *TSG GERAN Report*

*to*

## *TSG-SA#15*

**TSG-GERAN Chairman**

**Niels Peter Skov Andersen**

**Motorola**

MT



**Tdoc SP-020124**



# ***TSG GERAN work area (1/2)***



## **TSG GSM/EDGE Radio Access Network (TSG-GERAN)**

- **GERAN Radio aspects, and interfaces**
- **RF aspects of GERAN**
- **Specifications for GERAN radio performance and RF system aspects**
- **GERAN Radio Layer 1 specification**
- **GERAN Radio Layer 2 specification**
- **GERAN Radio Layer 3 RR specification**

A GLOBAL INITIATIVE

# ***TSG GERAN work area (2/2)***

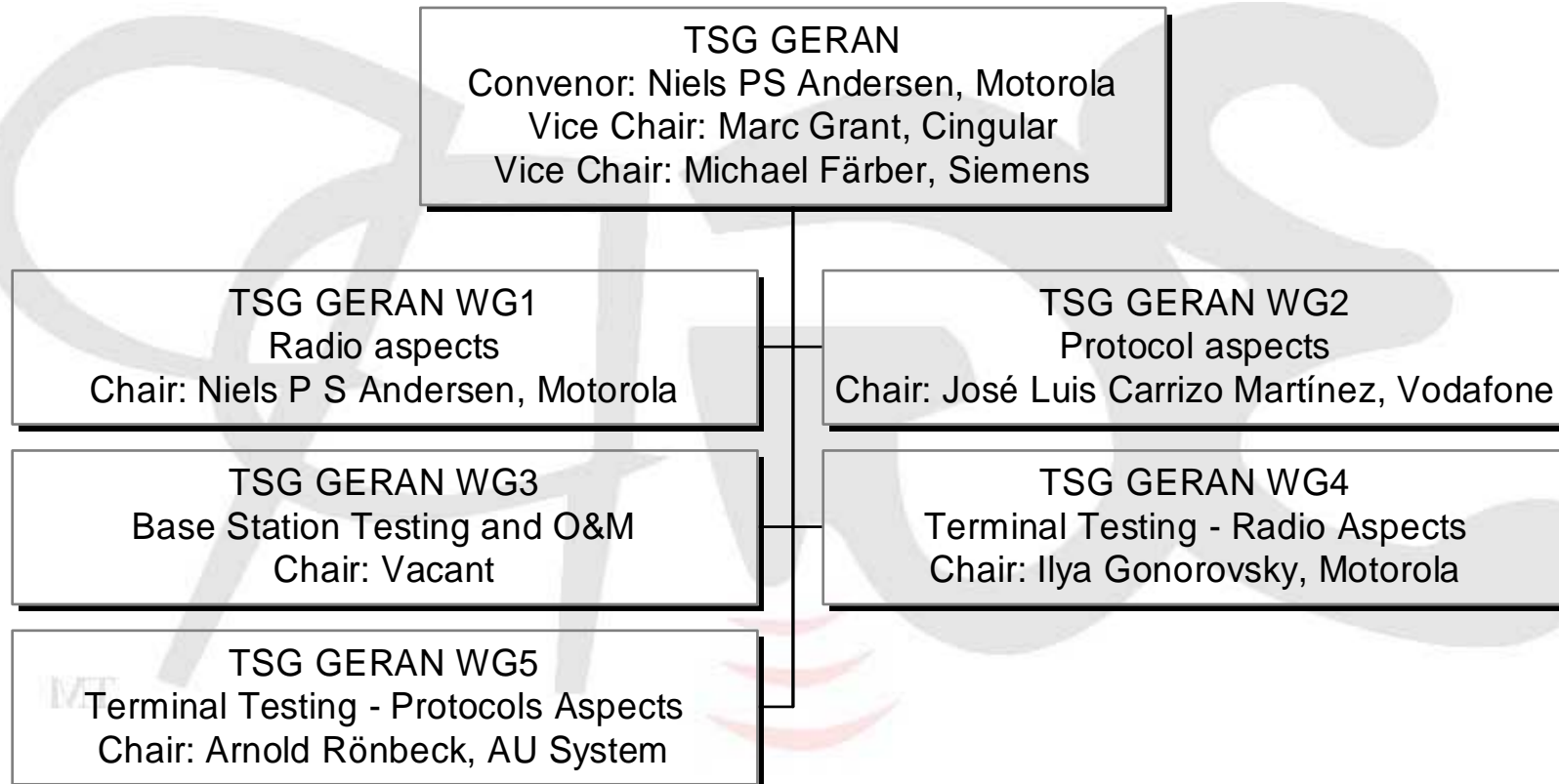


- **A interface specification, Gb interface specification**
- **Internal GERAN interface specifications such as Abis, and Ater (CCU-TRAU)**
- **Conformance test specifications for testing of all aspects of GERAN base stations**
- **Conformance test specifications for testing of all aspects of GERAN terminals**
- **GERAN specific O&M specifications for the nodes in the GERAN**

•

A GLOBAL INITIATIVE

# Organisation of TSG GERAN (1/4)



A GLOBAL INITIATIVE

# ***Organisation of TSG GERAN*** ***(2/4)***



## **TSG GERAN WG1 – Radio Aspects**

- **Chairman: Niels Peter Skov Andersen, Motorola**
- **RF aspects of GERAN**
- **GERAN radio performance and RF system aspects**
- **Ater (CCU-TRAU)**

## **TSG GERAN WG2 – Protocol Aspects**

- **Chairman: José Luis Carrizo Martínez, Vodafone**
- **GERAN Radio Layer 2 specification**
- **GERAN Radio Layer 3 RR specification**
- **A interface specification, Gb interface specification**
- **Internal GERAN interface specifications such as Abis**

# ***Organisation of TSG GERAN*** ***(3/4)***



## **TSG GERAN WG3 – Base Station Testing and O&M**

**Chairman: Vacant**

- **Conformance test specifications for testing of all aspects of GERAN base stations**
- **GERAN specific O&M specifications for the nodes in the GERAN**

MT

A GLOBAL INITIATIVE

# ***Organisation of TSG GERAN*** **(4/4)**



## **TSG GERAN WG4 – Terminal Testing – Radio Aspects**

**Chairman: Ilya Gonorovsky**

- **Conformance test specifications for testing of Lower layers including RLC/MAC**

## **TSG GERAN WG5 – Terminal Testing – Protocol Aspects**

**Chairman: Arnold Rönbeck, AU System**

- **Conformance test specifications for testing Protocol aspects above the RLC/MAC**

A GLOBAL INITIATIVE

# ***GPRS/EDGE***



- **Specifications stable no major issues detected for frozen Releases (R97, R98, R99, release 4)**
- **Small update and clarification for synchronisation between CS and PS for DTM**
- **Mandatory requirement on mobile to support fixed allocation proposed removed due to lack of usage in networks – Decision to be taken at TSG GERAN #09**

A GLOBAL INITIATIVE



# ***Multimode GSM – 3G***



- **No major changes**
- **Alignment between GERAN requirements and RAN WG2 requirements verified**
- **Signalling provides the theoretical option of including more 3G neighbour cells/frequencies that required supported by mobile. It has been agreed to leave the mobile behaviour unspecified and leave responsibility to network to include to many neighbour cells/frequencies**

# LCS



- **Only smaller corrections for LCS R98→**
- **LCS support for GPRS completed**
- **LAC added to BSSLAP Reset**
- **Other Release 5 issues**
  - **Definition of LMU Id**
  - **Addition of an extended Reference ID to LCS RRLP Messages**

MT

A GLOBAL INITIATIVE

# ***Support for Codecs*** (1/4)



- **TSG GERAN has not found it necessary to change the performance requirements for AMR on GMSK channels even though errors in the original simulations has been detected**
- **TSG GERAN has completed work on 8-PSK channels for AMR with exception of the final radio performance requirements**
- **TSG GERAN has completed the changes needed to support AMR-WB on GMSK channels, but is questioning the need for all the modes for Tele Service 11**

# ***Support for codecs*** (2/4)



- **TSG GERAN is in the progress of evaluating Channel Coding for 8-PSK Channels to support AMR-WB**
- **During evaluation of channel coding for AMR-WB it has become apparent to TSG GERAN that for Tele Service 11 it does seem likely that all modes of AMR-WB will be used for deployment. As a reduction of the modes used for TS 11, will simplify implementation TSG GERAN would suggest that effort is made to reduce the number of modes used for TS 11. (See **SP-020004**)**

# Support for codecs (3/4)



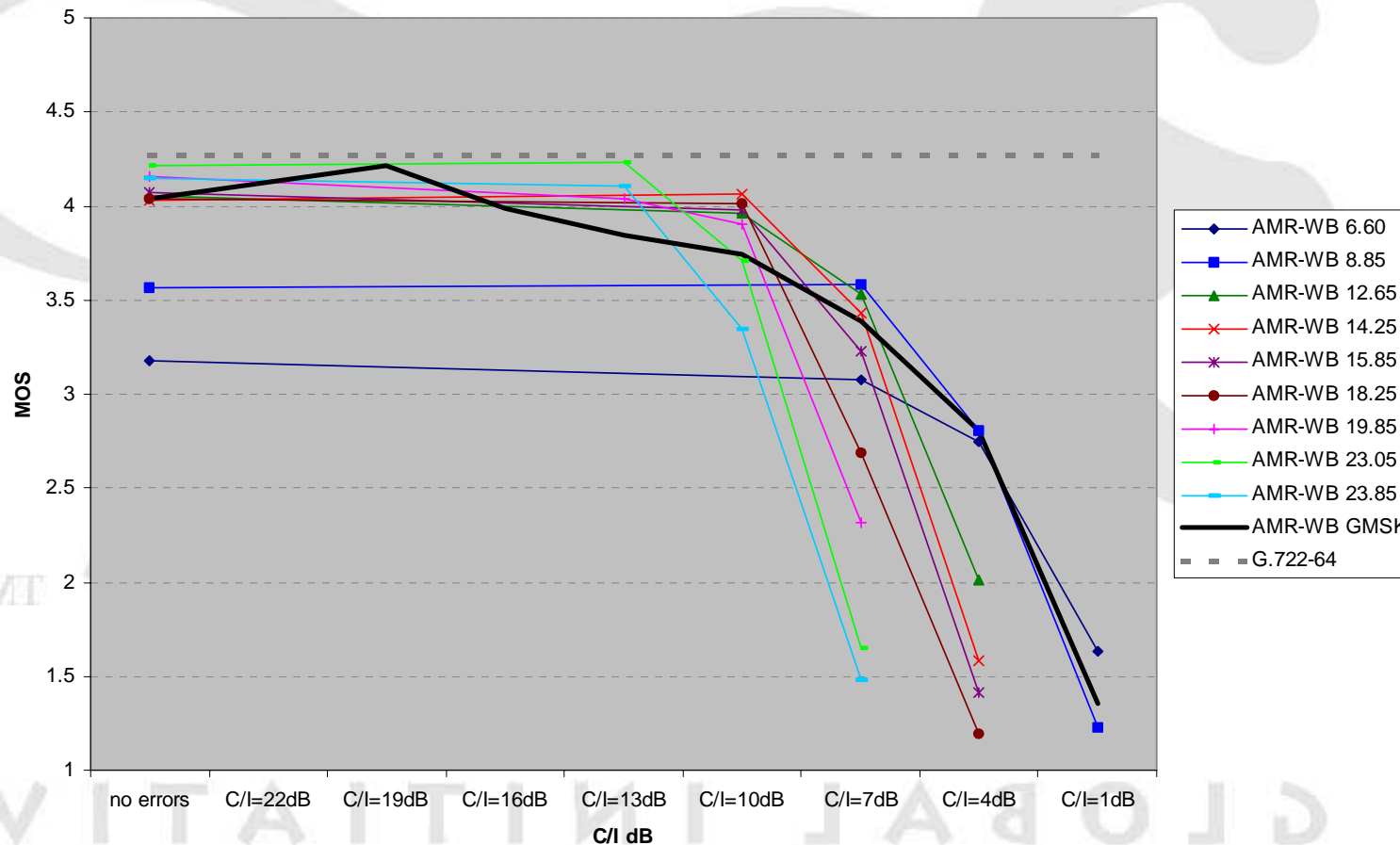
A GLOBAL INITIATIVE

TSG GERAN

TSG SA#15

## Subjective test results from experiment 1: 8-PSK FR-channel

8-PSK Full-Rate



# Support for codecs (4/4)



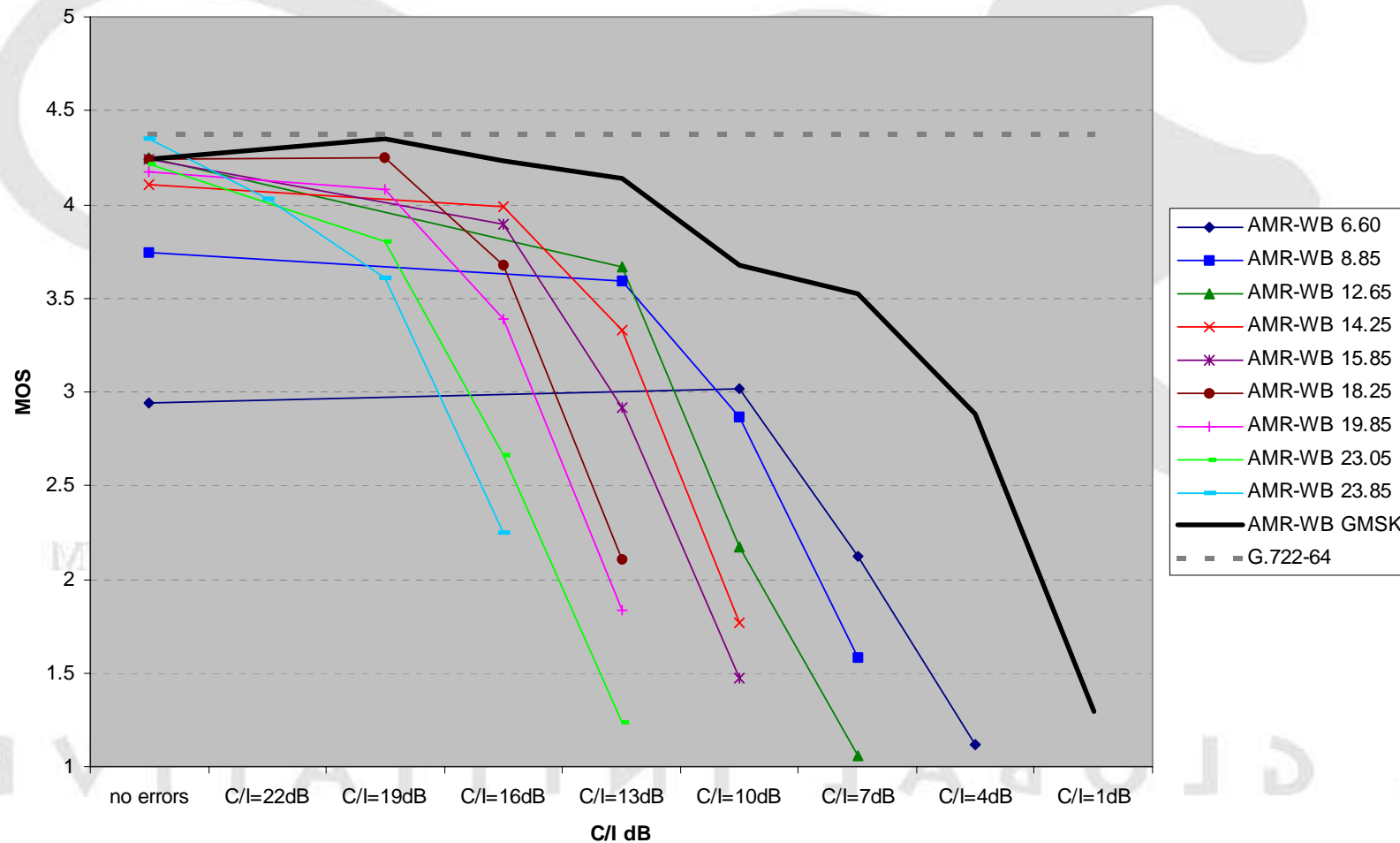
A GLOBAL INITIATIVE

TSG GERAN

TSG SA#15

## Subjective test results from experiment 2: 8-PSK HR-channel

8-PSK Half\_rate



# ***GERAN I<sub>u</sub>-mode***



- **I<sub>u</sub>-mode broadcast capacity believed solved through usage of PBCCH**
- **Good progress on RRC (TS 44.118) – specification reviewed – update process document through usage of CR format**
- **RLC/MAC**
  - Agreement of separate specification TS 44.160
  - Most concepts agreed
  - Several editing session schedule to progress work
- **Expected completion date for I<sub>u</sub>-mode – June 02 – I<sub>u</sub>-mode should be included in Release 5**

# ***Other Technical Issues*** (1/2)



- **Work started on unequal error protection – TSG GERAN is in dialogue with TSG SA WG2 and TSG RAN WGs**
- **Discussions of introduction of Flexible Layer One Concept (FLOC)**
- **MBMS**
  - **Stage 1 reviewed and need for dialogue with TSG SA WG1 and WG2 experts identified**
  - **Question on timescale Release 5 does not seem feasible for radio part**

A GLOBAL INITIATIVE



## ***Other technical issues*** (2/2)



- **Discussions with TSG SA WG1 on service support to enable usage of legacy transceivers – EFR codec, Data rates based on nx9.6 kbit/s**
- **LS sent to ITU-T SG2 informing that MCC & MNC is used on radio interface**
- **External NACC completed in GERAN – CN4 is working on the remaining Core Network aspects**

A GLOBAL INITIATIVE

# Testing (1/3)



- **Main focus has been on testing of:**
  - Radio & Layer 1
  - GPRS
  - EDGE
  - Selection/Reselection & Handover (2.5G, 3G)
  - LCS
  - Tracking of core specification changes
- **New areas of testing initiated**
  - AMR (Narrow band)
  - DTM

# Testing (2/3)



- It has been suggested that some of the parameters for LCS are very tight and accuracy may not be feasible for testing
- It was proposed to encourage more test equipment manufacturers validate the feasibility of the proposed block-diagram for LCS testing

MT

A GLOBAL INITIATIVE

# Testing (3/3)



- The members have been requested to provide input for the development of Test Cases for:
  - Wideband AMR
  - RLC/MAC (Iu interface CS and PS domain)
  - Enhanced power control
  - AMR 8 PSK HR
  - Selection/Reselections (GERAN I<sub>u</sub>-mode >UTRAN)
  - Handover (GERAN I<sub>u</sub>-mode >UTRAN PS).

# Requests to TSG SA



- Consider reduction of number of AMR-WB modes to be used for telephony (Tele Service 11) (See **SP-020004**)
- Take note of TSG-GERAN work programme and that GERAN I<sub>u</sub>-mode first is expected to be completed by June 2002
- Confirm that is acceptable to include GERAN I<sub>u</sub>-mode in Release 5

*Extract of GERAN work programme and list of CR handled at TSG GERAN #08 is attached to this report*

# ***Specification and version numbering***



- Old specification numbers and version numbers are kept for Phase 1, Phase 2, Release 96, Release 97, Release 98, and Release 99
- For Releases after Release 99 specification numbering to follow 3GPP format xx.yyy and version number aligned with other TSGs, e.g next release will be version 4.x.y.
- New specification numbers to be derived from the old specification number  
 $ab.cd \Rightarrow (40+ab).0cd$   
e.g  
 $05.08 \Rightarrow 45.008$

A GLOBAL INITIATIVE

# ***Future TSG GERAN Plenary meetings***



<b>TSG GERAN #09</b>	<b>15 - 19 April 2002, USA</b>
<b>TSG GERAN #10</b>	<b>24 - 28 June 2002, Europe</b>
<b>TSG GERAN #11</b>	<b>26 - 30 August 2002, USA</b>
<b>TSG GERAN #12</b>	<b>18 - 22 November 2002, ??</b>
<b>TSG GERAN #13</b>	<b>3 - 7 February 2003</b>
<b>TSG GERAN #14</b>	<b>7-11 April 2003</b>
<b>TSG GERAN #15</b>	<b>TBD (June 2003 ?)</b>
<b>TSG GERAN #16</b>	<b>25-29 August</b>
<b>TSG GERAN #17</b>	<b>17-21 November</b>

## Work item status and approval time frame

This list reflects the work items running under the responsibility of TSG GERAN.

Feature	Building block	Work task	Date of completion	Status
Evolution of transport (UTRAN Feature)	Evolution of transport in UTRAN and GERAN	Addition of transport mechanisms other than ATM for lu <ul style="list-style-type: none"> <li>Identification of alternative transports</li> <li>Specification of those alternative transports</li> </ul>	Mar 2002	Ongoing
GERAN/UTRAN interface evolution 1 <a href="#">GP-000481</a>	Evolution of lu ps	<ul style="list-style-type: none"> <li>Identification of GERAN requirements on lu ps</li> <li>Update of specifications</li> </ul>	Nov 2001 Mar 2002	Ongoing
GERAN/UTRAN interface evolution 2 <a href="#">GP-010417</a>	Evolution of lu cs <a href="#">GP-000430</a>	<ul style="list-style-type: none"> <li>Identification of GERAN requirements on lu cs</li> <li>Update of specifications</li> </ul>	Apr 2002 Apr 2002	Ongoing
Low chip rate TDD option (UTRAN)	Low chiprate TDD interworking with GERAN <a href="#">GP-000432</a>	<ul style="list-style-type: none"> <li>Handover and Cell Selection / Reselection to UTRA 1.28Mcps TDD</li> </ul>		Ready for R4. Closed
GERAN improvements 1 <a href="#">GP-000433</a>	Gb over IP <a href="#">GP-000434</a>	IP-fication of Gb <ul style="list-style-type: none"> <li>Concept</li> <li>Changes to 08.16, 08.18</li> </ul>		Ready for R4. Closed
GERAN improvements 2 <a href="#">GP-012812</a>	Gb enhancements <a href="#">GP-000436</a>	Intra BSC NACC <ul style="list-style-type: none"> <li>Concept</li> <li>Changes in 03.64</li> <li>Changes in 04.60</li> <li>Changes in 44.008</li> </ul>		Ready for R4. Closed
	MS conformance test for Intra BSC NACC <a href="#">GP-012811</a>	<ul style="list-style-type: none"> <li>Changes in 51.010</li> </ul>	Apr 2002	Not started
GERAN improvements 3 <a href="#">GP-010418</a>	Evolution of the transport for A <a href="#">GP-010910</a>	<ul style="list-style-type: none"> <li>Definition of a new A/Ater Interface Transport Layer option based on the lu Interface Transport Layer</li> <li>Adaptation of the Layer 3 BSSMAP procedures as required.</li> </ul>	Apr 2002	Ongoing
GERAN Improvements 4 <a href="#">GP-010363</a>	Gb enhancements 2 <a href="#">GP-010363</a>	Stage 2  Stage 3 (changes in 44.060) <ul style="list-style-type: none"> <li>Definition of enhanced countdown procedure</li> <li>Definition of enhanced TBF release procedure</li> </ul>		Ready for R4. Closed
GERAN Inter BSC NACC improvements over the Gb Interface <a href="#">GP-012313</a>	Modificiation of Gb protocols for GERAN Inter BSC NACC over the Gb interface <a href="#">GP-012314</a>	Stage 3 (changes to ) <ul style="list-style-type: none"> <li>48.018</li> </ul>	Apr 2002	Ongoing



	Modification of core network protocols for GERAN Inter BSC NACC for Gb interface <a href="#">GP-011877</a>	<p>Stage 2</p> <ul style="list-style-type: none"> <li>• Concept</li> <li>• 23.060 change <ul style="list-style-type: none"> <li>– Definition of Inter BSC NACC</li> </ul> </li> </ul> <p>Stage 3 (changes to )</p> <ul style="list-style-type: none"> <li>• 29.060</li> </ul>	<p>Nov 2001</p> <p>Apr 2002</p>	
GERAN support for IP multimedia <a href="#">GP-010420</a>	GERAN Header adaptation <a href="#">GP-010421</a>	Header adaptation: <ul style="list-style-type: none"> <li>• Definition of compression and removal modes for PDCP protocol</li> <li>• Conceptual description in stage 2</li> <li>• Necessary changes on stage 3 regarding header removal</li> </ul>	<p>Sept 2000</p> <p>Oct 2001</p> <p>Dec 2002</p>	Ongoing
	GERAN Radio access bearer design for IP multimedia <a href="#">GP-010422</a>	MuM control signalling for conversational multimedia services. <ul style="list-style-type: none"> <li>• Identification of requirements</li> <li>• Necessary modifications due to SIP</li> </ul>	<p>Feb 2002</p> <p>Jun 2002</p>	Ongoing
	GERAN MS Conformance test for support of IP multimedia <a href="#">GP-010424</a>	<ul style="list-style-type: none"> <li>• MS test</li> </ul>	<p>Dec 2002</p>	Not started
	GERAN BTS Conformance test for support of IP multimedia <a href="#">GP-010425</a>	<ul style="list-style-type: none"> <li>• BTS test</li> </ul>	<p>Dec 2002</p>	Not started
	Alignment of 3G functional split and lu <a href="#">GP-012757</a>	GERAN user / control plane <a href="#">GP-012756</a>	<p>Alignment with UMTS bearer concept</p> <ul style="list-style-type: none"> <li>• Stage 2</li> </ul>	<p>Jun 2001</p>
		<ul style="list-style-type: none"> <li>• Adoption of the UTRAN PDCP</li> </ul>	<p>Dec 2001</p>	
		<ul style="list-style-type: none"> <li>• Development of RLC / MAC</li> </ul>	<p>Jun 2002</p>	
		<ul style="list-style-type: none"> <li>• Development of GERAN RRC</li> </ul>	<p>Jun 2002</p>	
		<ul style="list-style-type: none"> <li>• Ciphering and integrity protection concept paper</li> </ul>	<p>Apr 2002</p>	
		<ul style="list-style-type: none"> <li>• Multiple TBF or equivalent Concept paper</li> </ul>	<p>Feb 2002</p>	
		<ul style="list-style-type: none"> <li>• Paging concept</li> </ul>	<p>Apr 2002</p>	
		<ul style="list-style-type: none"> <li>• Dedicated physical subchannels. Includes traffic and control channels</li> </ul>	<p>Nov 2001</p>	
		<ul style="list-style-type: none"> <li>• lu support and broadcast concept</li> </ul>	<p>Apr 2002</p>	
		<ul style="list-style-type: none"> <li>• Impact of using RLC instead of LAPDm concept</li> </ul>	<p>Feb 2002</p>	
		<ul style="list-style-type: none"> <li>• Contention resolution, mobile-station identity, and access concept</li> </ul>	<p>Nov 2001</p>	
		<ul style="list-style-type: none"> <li>• PDCP concept</li> </ul>	<p>Apr 2002</p>	

		<ul style="list-style-type: none"> <li>Downlink delayed TBF release</li> </ul>	Oct 2001	
		<ul style="list-style-type: none"> <li>Add transparent RLC Concept</li> </ul>	Feb 2002	
		<ul style="list-style-type: none"> <li>Handover concept</li> </ul>	Feb 2002	
		<ul style="list-style-type: none"> <li>Physical layer alignment with UMTS bearer concept</li> <li>Control channels in 45.003</li> <li>Receiver performance in 45.005 for PDTCH/TCH and control channels</li> </ul>	Jun 2001	
	Iu rg interface <a href="#">GP-010428</a>	Inter BSS interface Identification of requirements Stage 2 Adoption of relevant parts from Iu r Complementation with GERAN specifics New stage 3	Apr 2002	Ongoing
		Inter BSS-RNS interface Identification of requirements Stage 2 Adoption of relevant parts from Iu r Complementation with GERAN specifics New stage 3	Apr 2002	Ongoing
	Voice over GERAN PS and CS concept <a href="#">GP-010432</a>	Voice over GERAN PS and CS concept <ul style="list-style-type: none"> <li>Architecture for A, Iu cs and Iu ps</li> <li>Handover</li> <li>RTP payload</li> </ul>	Nov 2001	Ongoing
	GERAN MS Conformance test for GERAN interface evolution <a href="#">GP-010434</a>	<ul style="list-style-type: none"> <li>MS test</li> </ul>	Dec 2002	Not started
	GERAN BTS Conformance test for GERAN interface evolution <a href="#">GP-010435</a>	<ul style="list-style-type: none"> <li>BTS test</li> </ul>	Dec 2002	Not started
Enhanced Power Control <a href="#">GP-012748</a>	Realization of Enhanced power control and signaling support <a href="#">GP-012749</a>	Concept Changes to 43.051 Changes to 44.004 Changes to 44.018 Changes to 48.058 Changes to 45.001 Changes to 45.002 Changes to 45.003 Changes to 45.008	Nov 2001	Closed for Rel 5
	GERAN MS Conformance test for Enhanced Power Control <a href="#">GP-012750</a>	<ul style="list-style-type: none"> <li>MS test</li> </ul>	Jun 2002	Not started
	GERAN BTS Conformance test for Enhanced Power Control <a href="#">GP-012751</a>	<ul style="list-style-type: none"> <li>BTS test</li> </ul>	Jun 2002	Not started

8PSK AMR HR <a href="#">GP-012752</a>	Definition of channel coding, performance requirements and signaling support <a href="#">GP-012753</a>	<ul style="list-style-type: none"> <li>• Concept</li> <li>• Changes to 44.018</li> <li>• Changes to 45.001</li> <li>• Changes to 45.002</li> <li>• Changes to 45.003</li> <li>• Changes to 45.005</li> <li>• Changes to 24.008</li> <li>• Changes to 48.058</li> </ul>	Feb 2002	Ongoing
	GERAN MS Conformance test for 8PSK HR <a href="#">GP-012754</a>	<ul style="list-style-type: none"> <li>• MS test</li> </ul>	Jun 2002	
	GERAN BTS Conformance test for 8PSK HR <a href="#">GP-012755</a>	<ul style="list-style-type: none"> <li>• BTS test</li> </ul>	Jun 2002	
GERAN enhancements for streaming services 1 <a href="#">GP-010430</a>	GERAN enhancements for streaming services 1 <a href="#">GP-010430</a>	<ul style="list-style-type: none"> <li>• Concept</li> <li>• RLC protocol enhancement (SDU Discard)</li> </ul>	Oct 2001 Nov 2001	Ongoing
GERAN enhancements for streaming services 2 <a href="#">GP-010429</a>	GERAN enhancements for streaming services 2 <a href="#">GP-010429</a>	Usage of ECSD Stage 2 Stage 3 <ul style="list-style-type: none"> <li>• RLC PDU formats</li> <li>• MAC header</li> </ul>	Jun 2001 Apr 2002	Ongoing
Intra Domain Connection of RAN Nodes to Multiple CN Nodes: Overall System Architecture	GERAN work for Intra Domain Connection of RAN Nodes to Multiple CN Nodes <a href="#">GP-020492</a>	Stage 2 (changes to ) <ul style="list-style-type: none"> <li>• 43.051 Introduction of support for IDNNS in GERAN lu mode</li> </ul> Stage 3 (changes to ) <ul style="list-style-type: none"> <li>• 48.016 Use of Gb interface concepts when a network applies IDNNS</li> <li>• 48.018 Include MSC/VLR identity in CS IMSI paging</li> </ul>	April 2002	Started in TSG GERAN #8
700 MHz spectrum support <a href="#">GP-000449</a>	GERAN support for the 700 MHz band	<ul style="list-style-type: none"> <li>• Signaling support</li> <li>• Physical layer definitions</li> <li>• Receiver performance and RF budget</li> </ul>		Ready for R4. Closed
	GERAN MS Conformance test for 700 MHz band <a href="#">GP-000451</a>	<ul style="list-style-type: none"> <li>• MS test</li> </ul>	Jun 2001	Closed
	GERAN BTS Conformance test for GERAN interface evolution <a href="#">GP-000452</a>	<ul style="list-style-type: none"> <li>• BTS test</li> </ul>	Jun 2001	Ongoing
Real Time QoS for packet services including VoIP (UTRAN)	HOs: maintenance of real-time QoS while moving between cells in the PLMN including inter-SGSN change and SRNS relocation or possibly other mechanisms (UTRAN) <a href="#">GP-010431</a>	Handover for the packet switched domain <ul style="list-style-type: none"> <li>• Stable RT handover report 25.936 including header removal</li> <li>• Update of stage 2</li> <li>• Update of relevant stage 3 specs</li> </ul>	Nov 2001	Closed

Wideband telephony services (UMTS)	Support of WB AMR in GERAN <a href="#">GP-000453</a>	GMSK and 8PSK WB FR / HR support <ul style="list-style-type: none"> <li>• Channel coding in 45.003</li> <li>• Signalling for A interface</li> <li>• Signalling for Iu</li> <li>• Link adaptation in 45.009</li> <li>• Receiver performance in 45.005</li> </ul>	Apr 2002 Nov 2001  Jun 2002	Ongoing
	GERAN MS Conformance test for WB AMR <a href="#">GP-000454</a>	<ul style="list-style-type: none"> <li>• MS test</li> </ul>	Jun 2002	Not started
	GERAN BTS Conformance test for WB AMR <a href="#">GP-000455</a>	<ul style="list-style-type: none"> <li>• BTS test</li> </ul>	Jun 2002	Not started
Location service (UMTS)	LCS interoperability aspects to GERAN <a href="#">GP-000456</a>	<ul style="list-style-type: none"> <li>• Co-ordinated development of GSM LCS Phase 2 and UMTS LCS, S2 and GERAN</li> </ul>		Ongoing
	Location service for GERAN R4 <a href="#">GP-010932</a>	<ul style="list-style-type: none"> <li>• Work for aligning LCS R4 CN and GERAN</li> </ul>		Ready for R4. Closed
	Location Services (LCS) for GERAN in A/Gb Mode <a href="#">GP-011925</a>	<ul style="list-style-type: none"> <li>• GERAN LCS Stage Two</li> <li>• Gb interface support for LCS</li> <li>• L3 protocol support for LCS</li> <li>• Stage 3 specifications</li> </ul>	Feb. 2002	Completed: GERAN #8
	Location Services (LCS) for GERAN in Iu Mode <a href="#">GP-011926</a>	<ul style="list-style-type: none"> <li>• GERAN LCS stage 2</li> <li>• Iu interface support for LCS</li> <li>• Iur-g interface support for LCS</li> <li>• RRC protocol support for LCS</li> <li>• Additional impacts on Broadcast of LCS data on packet channels</li> <li>• Stage 3 specifications</li> </ul>	Stage 2- GERAN #8 Feb. 2002 Stage 3 – GERAN #9 April 2002	Ongoing GERAN LCS Stage 2 IU mode 50% complete Iur-g is FFS Stage 3 specifications needed RRC protocol support for LCS concept was discussed in GERAN(2)bis#6 Broadcast LCS data for IU mode: at GERAN #7 discussed and agreed that the capacity exists on the PBCCH to accommodate LCS Broadcast assistance data.
	GERAN MS Conformance test for LCS <a href="#">GP-000458</a>	<ul style="list-style-type: none"> <li>• Develop LCS MS test case work plan (Release 98/99/4)</li> <li>• Develop LCS MS test cases</li> </ul>	August 2002 (#11)	Work plan agreed: GERAN #7  Test case development ongoing.
	GERAN BTS Conformance test for LCS <a href="#">GP-000459</a>	<ul style="list-style-type: none"> <li>• Develop LCS BTS test case work plan (Release 99/99/4)</li> <li>• Develop LCS BTS test cases</li> </ul>	GERAN #12 November 2002	Work has not started

Uplink TDOA feasibility study <a href="#">GP-012794</a>	Uplink TDOA feasibility study <a href="#">GP-012794</a>	<ul style="list-style-type: none"> <li>Performing of a feasibility study</li> </ul>	Apr 2002	Started at GERAN #7
--	--	---	----------	---------------------

Closed work items
-------------------

### New Specifications

GSM No.	TDOC	CR	Subject	CR Comp. Resp.	TSG	Completion Date
43.051			GERAN overall description	S. Guillaume (Nokia)	GERAN	Nov 00
43.059			Functional Stage 2 Description of Location Services in GERAN	M. Livingston (Nokia)	GERAN	April 2001
44.118			GERAN lu mode RRC	S. Hamiti	GERAN	June 2002
44.160			GERAN lu mode RLC/MAC	?	GERAN	June 2002
50.099		TR	GERAN project schedule and open issues	F. Mueller	GERAN	Dec 2002
xx.xxx		TR	Optimized speech in the IMS domain	B. Guarino	GERAN	?

✓ Approved      †      Set on hold      → #29      Send to SMG #29      ~~CR0000A000~~      CR has  
 been cancelled

**3GPP TSG GERAN**  
**Meeting no 8**  
**Rome, Italy**  
**4 – 8 February 2002**

**Status of Change Request presented to TSG GERAN #08**

Tdoc	Title	Source	Status
GP-020191	CR 03.64-A085 Network requirements for MS synchronisation (R99)	Ericsson	Revised
GP-020406	CR 03.64-A085 rev 1 Network requirements for MS synchronisation (R99)	Ericsson	Approved
GP-020135	CR 03.71-038 Informing an SMLC of a change in the LAC for LCS using BSSLAP (For information)	Siemens	NA
GP-020224	CR 04.06-A014 Correction LAPDm performance parameters for E-FACCH/F (R99)	Ericsson	Revised
GP-020413	CR 04.06-A014 rev 1 Correction LAPDm performance parameters for E-FACCH/F (R99)	Ericsson	Approved
GP-020053	CR 04.08-A776 Correction of CSN.1 coding for SI 6 Rest Octets (R97)	MCC	Revised
GP-020494	CR 04.08-A776 rev 1 Correction of CSN.1 coding for SI 6 Rest Octets (R97)	MCC	Approved
GP-020420	CR 04.08-A778 Correction of CSN.1 coding for SI 6 Rest Octets (R98)	MCC	Revised
GP-020495	CR 04.08-A778 rev 1 Correction of CSN.1 coding for SI 6 Rest Octets (R98)	MCC	Approved
GP-020121	CR 04.14-A012 New test loops for AMR-NB (R98)	Motorola	Postponed
GP-020122	CR 04.14-A013 New test loops for AMR-NB (R99)	Motorola	Postponed
GP-020118	CR 04.18-A239 Correction about BSIC and RTD for neighbour cells (R99)	Motorola	Revised
GP-020424	CR 04.18-A239 rev 1 Correction about BSIC and RTD for neighbour cells (R99)	Motorola	Revised
GP-020497	CR 04.18-A239 rev 2 Correction about BSIC and RTD for neighbour cells (R99)	Motorola	Approved
GP-020305	CR 04.18-A240 Max number of UTRAN frequencies (R99)	Ericsson	Withdrawn
GP-020336	CR 04.18-A241 Number of cells and frequencies in the 3G Neighbour cell list (R99)	Nokia	Approved
GP-020326	CR 04.31-A062 rev 2 Correction to OTD Measurement Response (R98)	Motorola	Revised
GP-020429	CR 04.31-A062 rev 3 Correction to OTD Measurement Response (R98)	Motorola	Revised
GP-020487	CR 04.31-A062 rev 4 Correction to OTD Measurement Response (R98)	Motorola	Approved
GP-020327	CR 04.31-A063 rev 2 Correction to OTD Measurement Response (R99)	Motorola	Revised
GP-020430	CR 04.31-A063 rev 3 Correction to OTD Measurement Response (R99)	Motorola	Revised
GP-020488	CR 04.31-A063 rev 4 Correction to OTD Measurement Response (R99)	Motorola	Approved
GP-020041	CR 04.31-A064 Missing Carriage Return in ASN.1 (R98)	Ericsson	Revised
GP-020435	CR 04.31-A064 rev 1 Missing Carriage Return in ASN.1 (R99)	Ericsson	Approved
GP-020040	CR 04.31-A065 Missing Carriage Return in ASN.1 (R99)	Ericsson	Approved
GP-020199	CR 04.31-A066 Correction of Reference Frame Number in E-OTD Measurement Information Element (R98)	Motorola	Postponed
GP-020200	CR 04.31-A067 Correction of Reference Frame Number in E-OTD Measurement Information Element (R99)	Motorola	Postponed
GP-020440	CR 04.31-A068 Editorial Correcton of the Expected OTD Description (R98)	Motorola	Postponed

Tdoc	Title	Source	Status
GP-020441	CR 04.31-A069 Editorial Correcton of the Expected OTD Description (R99)	Motorola	Postponed
GP-020482	CR 04.31-A070 Clarification and correction of DGPS Data Fields (R98)	Motorola	Postponed
GP-020481	CR 04.31-A071 Clarification and correction of DGPS Data Fields (R99)	Motorola	Postponed
GP-020195	CR 04.60-B060 rev 2 Clarification of RANDOM_ACCESS_INFORMATION value (R99)	Ericsson	Approved
GP-020193	CR 04.60-B061 rev 1 Network requirements for MS synchronisation (R99)	Ericsson	Revised
GP-020408	CR 04.60-B061 rev 2 Network requirements for MS synchronisation (R99)	Ericsson	Approved
GP-020189	CR 04.60-B062 rev 1 Clarification of the one-phase packet access at contention resolution failure (R99)	Ericsson	Rejected
GP-020197	CR 04.60-B063 Usage of MA_NUMBER in the PCCCH Description in PSI2 (R99)	Ericsson	Revised
GP-020411	CR 04.60-B063 rev 1 Usage of MA_NUMBER in the PCCCH Description in PSI2 (R99)	Ericsson	Approved
GP-020278	CR 04.60-B064 Corrections in countdown procedure description (R99)	Nortel	Revised
GP-020417	CR 04.60-B064 rev 1 Corrections in countdown procedure description (R99)	Nortel Networks	Approved
GP-020280	CR 04.60-B065 Alignment of EGPRS TBF mode description and ""resegment"" information (R99)	Nortel	Revised
GP-020415	CR 04.60-B065 rev 1 Alignment of EGPRS TBF mode description and "resegment" information (R99)	Nortel Networks	Approved
GP-020308	CR 04.60-B066 Max number of UTRAN frequencies (R99)	Ericsson	Withdrawn
GP-020313	CR 04.60-B067 Inconsistency in the syntax of the message PACKET POWER CONTROL/TIMING ADVANCE (R97)	Alcatel	Rejected
GP-020314	CR 04.60-B068 Inconsistency in the syntax of the message PACKET POWER CONTROL/TIMING ADVANCE (R98)	Alcatel	Rejected
GP-020315	CR 04.60-B069 Inconsistency in the syntax of the message PACKET POWER CONTROL/TIMING ADVANCE (R99)	Alcatel	Rejected
GP-020339	CR 04.60-B070 Number of cells and frequencies in the 3G Neighbour cell list (R99)	Nokia	Approved
GP-020108	CR 05.02-A197 Correction of MAC mode allowed for multislot class 12, 22 and 27 (R99)	Mitsubishi	Rejected
GP-020256	CR 05.02-A198 Correction of MAC mode allowed for multislot class 12, 22 and 27 (R97)	Mitsubishi	Rejected
GP-020257	CR 05.02-A199 Correction of MAC mode allowed for multislot class 12, 22 and 27 (R98)	Mitsubishi	Rejected
GP-020111	CR 05.08-A344 Adjacent BSIC decoding and multislot configurations in extended dynamic allocation (R99)	Mitsubishi	Withdrawn
GP-020184	CR 05.08-A345 Conversion of cell re-selection parameters (R99)	Siemens	Rejected
GP-020258	CR 05.08-A346 Adjacent BSIC decoding and multislot configurations in extended dynamic allocation (R97)	Mitsubishi	Withdrawn
GP-020259	CR 05.08-A347 Adjacent BSIC decoding and multislot configurations in extended dynamic allocation (R98)	Mitsubishi	Withdrawn
GP-020457	CR 05.08-A348 3G-GSM clarification on RSSI, FDD valid cell and MULTIRAT_REPORTING (R99)	Motorola	Revised
GP-020509	CR 05.08-A348 rev 1 3G-GSM clarification on RSSI, FDD valid cell and MULTIRAT_REPORTING (R99)	Motorola	Approved
GP-020048	CR 05.09-A024 Clarification on MS response to the Codec Mode Command (R99)	Nortel, Motorola	Revised
GP-020344	CR 05.09-A024 rev 1 Clarification on MS response to the Codec Mode Command (R99)	Nortel, Motorola	Rejected
GP-020057	CR 05.09-A025 Clarification on MS response to the Codec Mode Command (R98)	Nortel, Motorola	Revised
GP-020343	CR 05.09-A025 rev 1 Clarification on MS response to the Codec Mode Command (R98)	Nortel, Motorola	Rejected

Tdoc	Title	Source	Status
GP-020087	CR 05.10-A074 Clarification to Requirements for Synchronization at DTM operation (R99)	Ericsson	Revised
GP-020452	CR 05.10-A074 rev 1 Clarification to Requirements for Synchronization at DTM operation (R99)	Ericsson	Approved
GP-020116	CR 06.74-Axxx Correction to DTX test vectors (R98)	Motorola	NA
GP-020302	CR 08.08-A242 Clarifications to Service Based Handover to other RAT's (R99)	Ericsson	Revised
GP-020421	CR 08.08-A242 rev 1 Clarifications to Service Based Handover to other RAT's (R99)	Ericsson	Revised
GP-020484	CR 08.08-A242 rev 2 Clarifications to Service Based Handover to other RAT's (R99)	Ericsson	Approved
GP-020180	CR 08.60-A013 Handover_Complete (R98)	Ericsson, Nokia, Nortel Networks, Siemens, Vodafone	Approved
GP-020181	CR 08.60-A014 Handover_Complete (R99)	Ericsson, Nokia, Nortel Networks, Siemens, Vodafone	Approved
GP-020177	CR 08.61-A004 Correct synchronisation description for HR_AMR (R98)	Ericsson, Nokia, Nortel Networks, Siemens, Vodafone	Approved
GP-020178	CR 08.61-A005 Correct synchronisation description for HR_AMR (R99)	Ericsson, Nokia, Nortel Networks, Siemens, Vodafone	Approved
GP-020157	CR 08.71-A018 Addition of LAC optional to BSSLAP Reset (R99)	Siemens	Approved
GP-020401	CR 09.95-A005 Conditions for IOV reset (R97)	TSG CN WG1	Approved
GP-020402	CR 09.95-A006 Conditions for IOV reset (R98)	TSG CN WG1	Approved
GP-020349	CR 24.008-550 rev 1 Applicability of CM3 IE Modulation Capability information (Rel 5)	Siemens	NA
GP-020124	CR 24.008-xxx High multislot classes for type 1 mobiles (Rel 5)	Motorola	NA
GP-020253	CR 43.051-033 rev 2 Introduction of support for MSC/SGSN in pool in GERAN Iu mode	Ericsson	Approved
GP-020176	CR 43.051-036 Speech services for GERAN Iu-mode (Rel 5)	Siemens	Revised
GP-020439	CR 43.051-036 rev 1 Speech services for GERAN Iu-mode (Rel-5)	Siemens	Postponed
GP-020268	CR 43.051-037 Mandatoriness of P channels and procedures on PCCCH (Rel 5)	Nokia	Approved
GP-020330	CR 43.051-038 Interfaces between GERAN and CN (Rel 5)	Siemens	Postponed
GP-020331	CR 43.051-039 Integrity protection in GERAN (Rel 5)	Siemens	Postponed
GP-020332	CR 43.051-040 Correction of alignment with physical channel definition in 45.002 (Rel-5)	Ericsson	Revised
GP-020461	CR 43.051-040 rev 1 Correction of alignment with physical channel definition in 45.002 (Rel-5)	Ericsson	Approved
GP-020039	CR 43.059-023 TOM Protocol Header Definition for LCS for GPRS (Rel 5)	Ericsson	Approved
GP-020045	CR 43.059-024 Informing an SMLC of a change in the LAC for LCS using BSSLAP (Rel 4)	Siemens	Revised
GP-020436	CR 43.059-024 rev 1 Informing an SMLC of a change in the LAC for LCS using BSSLAP (Rel 4)	Siemens	Approved
GP-020046	CR 43.059-025 Informing an SMLC of a change in the LAC for LCS using BSSLAP (Rel 5)	Siemens	Revised
GP-020437	CR 43.059-025 rev 1 Informing an SMLC of a change in the LAC for LCS using BSSLAP (Rel 5)	Siemens	Approved
GP-020285	CR 43.059-026 LCS Stage 2	Nokia	Revised
GP-020438	CR 43.059-026 rev 1 LCS Stage 2	Nokia	Revised
GP-020493	CR 43.059-026 rev 2 LCS Stage 2	Nokia	Approved
GP-020192	CR 43.064-006 Network requirements for MS synchronisation (Rel 4)	Ericsson	Revised
GP-020407	CR 43.064-006 rev 1 Network requirements for MS synchronisation (Rel 4)	Ericsson	Approved
GP-020165	CR 44.004-006 Introduction of Rel 5 Functionality (Rel 5)	Siemens	Revised
GP-020462	CR 44.004-006 rev 1 Introduction of Rel 5 Functionality (Rel 5)	Siemens	Postponed



Tdoc	Title	Source	Status
GP-020225	CR 44.006-002 Correction LAPDm performance parameters for E-FACCH/F (Rel 4)	Ericsson	Revised
GP-020414	CR 44.006-002 rev 1 Correction LAPDm performance parameters for E-FACCH/F (Rel-4)	Ericsson	Approved
GP-020123	CR 44.014-002 New test loops for AMR-NB (Rel 4)	Motorola	Postponed
GP-020074	CR 44.018-138 rev 1 Alignment of speech codecs references in GERAN specifications (Rel 4)	Nortel Networks	Approved
GP-020069	CR 44.018-139 Alignment of speech codecs references in GERAN specifications(Rel 5)	Nortel Networks	Approved
GP-020119	CR 44.018-140 Correction about BSIC and RTD for neighbour cells (Rel 4)	Motorola	Revised
GP-020425	CR 44.018-140 rev 1 Correction about BSIC and RTD for neighbour cells (Rel-4)	Motorola	Revised
GP-020498	CR 44.018-140 rev 2 Correction about BSIC and RTD for neighbour cells (Rel-4)	Motorola	Approved
GP-020120	CR 44.018-141 Correction about BSIC and RTD for neighbour cells (Rel 5)	Motorola	Revised
GP-020426	CR 44.018-141 rev 1 Correction about BSIC and RTD for neighbour cells (Rel-5)	Motorola	Revised
GP-020499	CR 44.018-141 rev 2 Correction about BSIC and RTD for neighbour cells (Rel-5)	Motorola	Approved
GP-020187	CR 44.018-142 ECSC-correction of a error in mirror CR059 (Rel 4)	Siemens	Approved
GP-020306	CR 44.018-143 Max number of UTRAN frequencies (Rel 4)	Ericsson	Withdrawn
GP-020307	CR 44.018-144 Max number of UTRAN frequencies (Rel 5)	Ericsson	Withdrawn
GP-020324	CR 44.018-145 3G-GSM clarification on the use of Measurement Result (Rel 5)	Motorola	Approved
GP-020337	CR 44.018-146 Number of cells and frequencies in the 3G Neighbour cell list (Rel 4)	Nokia	Approved
GP-020338	CR 44.018-147 Number of cells and frequencies in the 3G Neighbour cell list (Rel 5)	Nokia	Approved
GP-020071	CR 44.031-031 rev 1 TOM Protocol Header Definition for LCS for GPRS (Rel 5)	Ericsson	Approved
GP-020037	CR 44.031-032 rev 1 Final Response Indication in RRLP for Uplink Pseudo-segmentation (Rel 5)	Ericsson	Postponed
GP-020044	CR 44.031-033 rev 2 Addition of an extended Reference ID to LCS RRLP Messages (Rel 5)	Siemens	Revised
GP-020434	CR 44.031-033 rev 3 Addition of an extended Reference ID to LCS RRLP Messages (Rel-5)	Siemens	Approved
GP-020202	CR 44.031-034 Correction of Reference Frame Number in E-OTD Measurement Information Element (Rel 5)	Motorola	Postponed
GP-020204	CR 44.031-035 Clarification of DGPS Data Fields (Rel 5)	Motorola	Revised
GP-020479	CR 44.031-035 rev 1 Clarification and correction of DGPS Data Fields (Rel-5)	Motorola	Postponed
GP-020201	CR 44.031-036 Correction of Reference Frame Number in E-OTD Measurement Information Element (Rel 4)	Motorola	Postponed
GP-020328	CR 44.031-046 rev 2 Correction to OTD Measurement Response (Rel 4)	Motorola	Revised
GP-020431	CR 44.031-046 rev 3 Correction to OTD Measurement Response (Rel-4)	Motorola	Revised
GP-020489	CR 44.031-046 rev 4 Correction to OTD Measurement Response (Rel-4)	Motorola	Approved
GP-020329	CR 44.031-047 rev 2 Correction to OTD Measurement Response (Rel 5)	Motorola	Revised
GP-020432	CR 44.031-047 rev 3 Correction to OTD Measurement Response (Rel-5)	Motorola	Revised
GP-020490	CR 44.031-047 rev 4 Correction to OTD Measurement Response (Rel-5)	Motorola	Approved
GP-020442	CR 44.031-048 Editorial Correction of the Expected OTD Description (Rel-4)	Motorola	Postponed

Tdoc	Title	Source	Status
GP-020443	CR 44.031-049 Editorial Correction of the Expected OTD Description (Rel-5)	Motorola	Postponed
GP-020480	CR 44.031-050 Clarification and correction of DGPS Data Fields (Rel-4)	Motorola	Postponed
GP-020085	CR 44.060-063 rev 1 [Iu mode] Updates to 44.060 §§ 1 to 3 (Rel 5)	AT&T Wireless, Nokia, Vodafone	Withdrawn
GP-020273	CR 44.060-076 rev 1 Iu - Chapter 8 (Rel 5)	Nokia	Withdrawn
GP-020274	CR 44.060-077 rev 1 Iu - Chapter 9 (Rel 5)	Nokia	Withdrawn
GP-020163	CR 44.060-090 Updated section 4 of 44.060 (Rel 5)	Siemens	Withdrawn
GP-020164	CR 44.060-091 Updated section 7 of 44.060 (Rel 5)	Siemens	Withdrawn
GP-020312	CR 44.060-098 rev 2 Correction of minimum number of paging blocks "available" on one PCCCH (Rel 5)	Alcatel	Revised
GP-020410	CR 44.060-098 rev 3 Correction of minimum number of paging blocks "available" on one PCCCH (Rel-5)	Alcatel	Approved
GP-020266	CR 44.060-100 rev 1 Iu - RLC/MAC Proposal for FACCH, SACCH and SDCCH (Rel 5)	Nokia	Withdrawn
GP-020190	CR 44.060-101 rev 1 Clarification of the one-phase packet access at contention resolution failure (Rel 4)	Ericsson	Rejected
GP-020075	CR 44.060-102 rev 1 Backward compatibility of GPRS Cell Options IE (Rel 4)	Ericsson	Approved
GP-020196	CR 44.060-103 rev 2 Clarification of RANDOM_ACCESS_INFORMATION value (Rel 4)	Ericsson	Approved
GP-020194	CR 44.060-104 rev 1 Network requirements for MS synchronisation (Rel 4)	Ericsson	Revised
GP-020409	CR 44.060-104 rev 2 Network requirements for MS synchronisation (Rel-4)	Ericsson	Approved
GP-020234	CR 44.060-105 TBF Handover (Rel 5)	Nokia	Postponed
GP-020198	CR 44.060-108 Usage of MA_NUMBER in the PCCCH Description in PSI2 (Rel 4)	Ericsson	Revised
GP-020412	CR 44.060-108 rev 1 Usage of MA_NUMBER in the PCCCH Description in PSI2 (Rel-4)	Ericsson	Approved
GP-020279	CR 44.060-109 Corrections in countdown procedure description (Rel 4)	Nortel	Revised
GP-020418	CR 44.060-109 rev 1 Corrections in countdown procedure description (Rel-4)	Nortel Networks	Approved
GP-020281	CR 44.060-110 Alignment of EGPRS TBF mode description and ""resegment"" information (Rel 4)	Nortel	Revised
GP-020416	CR 44.060-110 rev 1 Alignment of EGPRS TBF mode description and "resegment" information (Rel-4)	Nortel Networks	Approved
GP-020309	CR 44.060-111 Max number of UTRAN frequencies (Rel 4)	Ericsson	Withdrawn
GP-020316	CR 44.060-113 Inconsistency in the syntax of the message PACKET POWER CONTROL/TIMING ADVANCE (Rel 4)	Alcatel	Rejected
GP-020317	CR 44.060-114 Clarification in the use of the Packet Timing Advance IE in a Packet Uplink Assignment message assigning a Single block (Rel 5)	Alcatel	Revised
GP-020419	CR 44.060-114 rev 1 Clarification in the use of the Packet Timing Advance IE in a Packet Uplink Assignment message assigning a Single block (Rel-5)	Alcatel	Approved
GP-020323	CR 44.060-115 Introduction of Access Technologies Request in a PUA assigning a TBF in GPRS mode (Rel 4)	Alcatel	Rejected
GP-020340	CR 44.060-116 Number of cells and frequencies in the 3G Neighbour cell list (Rel 4)	Nokia	Approved
GP-020090	CR 45.002-036 Clarification of permitted channel combinations (Rel 5)	Ericsson	Revised
GP-020464	CR 45.002-036 rev 1 Clarification of permitted channel combinations (Rel 5)	Ericsson	Revised
GP-020510	CR 45.002-036 rev 2 Clarification of permitted channel combinations (Rel 5)	Ericsson	Approved

Tdoc	Title	Source	Status
GP-020109	CR 45.002-037 Correction of MAC mode allowed for multislot class 12, 22 and 27 (Rel 4)	Mitsubishi	Rejected
GP-020110	CR 45.002-038 Correction of MAC mode allowed for multislot class 12, 22 and 27 (Rel 5) – WITHDRAWN	Mitsubishi	Withdrawn
GP-020188	CR 45.002-039 Correction of high multislot classes for type 1 mobiles (Rel 5)	Ericsson	Withdrawn
GP-020261	CR 45.002-040 Multiplexing PDTCH/U,PACCH/U and PCCCH/U (Rel 5)	Mitsubishi	Revised
GP-020454	CR 45.002-040 rev 1 Multiplexing PDTCH/U,PACCH/U and PCCCH/U (Rel 5)	Mitsubishi	Approved
GP-020460	CR 45.002-041 Correction on multislot class and Tra/Tta configuration	Motorola	Revised
GP-020478	CR 45.002-041 rev 1 Correction on multislot class and Tra/Tta configuration	Motorola	Approved
GP-020055	CR 45.003-015 Correction to channel coding for TCH/WFS (Rel 5)	Siemens	Approved
GP-020156	CR 45.003-016 Channel coding for O-TCH/WFS and O-TCH/WH (Rel 5)	Nokia	Postponed
GP-020112	CR 45.008-084 Adjacent BSIC decoding and multislot configurations in extended dynamic allocation (Rel 4)	Mitsubishi	Withdrawn
GP-020113	CR 45.008-085 Adjacent BSIC decoding and multislot configurations in extended dynamic allocation (Rel 5)	Mitsubishi	Withdrawn
GP-020117	CR 45.008-086 3G-GSM clarification on RSSI, FDD valid cell and MULTIRAT_REPORTING (Rel 5)	Motorola	Revised
GP-020455	CR 45.008-086 rev 1 3G-GSM clarification on RSSI, FDD valid cell and MULTIRAT_REPORTING (Rel 5)	Motorola	Revised
GP-020507	CR 45.008-086 rev 2 3G-GSM clarification on RSSI, FDD valid cell and MULTIRAT_REPORTING (Rel 5)	Motorola	Approved
GP-020185	CR 45.008-087 Conversion of cell re-selection parameters (Rel 4)	Siemens	Rejected
GP-020186	CR 45.008-088 Conversion of cell re-selection parameters (Rel 5)	Siemens	Rejected
GP-020358	CR 45.008-089 Clarification on the usage of Qsearch_P when broadcast on the BCCH	T-Mobil, Nokia	Approved
GP-020456	CR 45.008-090 3G-GSM clarification on RSSI, FDD valid cell and MULTIRAT_REPORTING (Rel 4)	Motorola	Revised
GP-020508	CR 45.008-090 rev 1 3G-GSM clarification on RSSI, FDD valid cell and MULTIRAT_REPORTING (Rel 4)	Motorola	Approved
GP-020049	CR 45.009-008 Clarification on MS response to the Codec Mode Command (Rel 4)	Nortel, Motorola	Revised
GP-020345	CR 45.009-008 rev 1 Clarification on MS response to the Codec Mode Command (Rel 4)	Nortel, Motorola	Rejected
GP-020050	CR 45.009-009 Clarification on MS response to the Codec Mode Command (Rel 5)	Nortel, Motorola	Revised
GP-020346	CR 45.009-009 rev 1 Clarification on MS response to the Codec Mode Command (Rel 5)	Nortel, Motorola	Revised
GP-020463	CR 45.009-009 rev 2 Clarification on MS response to the Codec Mode Command (Rel 5)	Nortel, Motorola	Approved
GP-020276	CR 45.009-010 on extension of RATSCCH to AMR-WB	Siemens, Ericsson, Alcatel, Nortel, Vodafone	Postponed
GP-020088	CR 45.010-002 Clarification to Requirements for Synchronization at DTM operation (Rel 4)	Ericsson	Revised
GP-020453	CR 45.010-002 rev 1 Clarification to Requirements for Synchronization at DTM operation (Rel 4)	Ericsson	Approved
GP-020089	CR 45.010-003 Clarification to Requirements for Synchronization at DTM operation (Rel 5) - WITHDRAWN	Ericsson	Withdrawn
GP-020072	CR 48.008-037 rev 1 Alignment of speech codecs references in GERAN specifications (Rel 4)	Nortel Networks	Approved
GP-020068	CR 48.008-038 Alignment of speech codecs references in GERAN specifications (Rel 5)	Nortel Networks	Approved
GP-020175	CR 48.008-039 Introduction of GERAN Classmark (Rel 5)	Siemens	Revised
GP-020445	CR 48.008-039 rev 1 Introduction of GERAN Classmark (Rel-5)	Siemens	Postponed

Tdoc	Title	Source	Status
GP-020303	CR 48.008-040 Clarifications to Service Based Handover to other RAT's (rel 4)	Ericsson	Revised
GP-020422	CR 48.008-040 rev 1 Clarifications to Service Based Handover to other RAT's (Rel-4)	Ericsson	Revised
GP-020485	CR 48.008-040 rev 2 Clarifications to Service Based Handover to other RAT's (Rel-4)	Ericsson	Approved
GP-020304	CR 48.008-041 Clarifications to Service Based Handover to other RAT's (Rel 5)	Ericsson	Revised
GP-020423	CR 48.008-041 rev 1 Clarifications to Service Based Handover to other RAT's (Rel-5)	Ericsson	Revised
GP-020486	CR 48.008-041 rev 2 Clarifications to Service Based Handover to other RAT's (Rel-5)	Ericsson	Approved
GP-020428	CR 48.018-057 rev 4 Introduction of RAN Information Management in 48.018 (Rel 5)	Ericsson	Approved
GP-020255	CR 48.018-061 Introduction of flow control per PFC between the SGSN and BSS (Rel 5)	Ericsson	Postponed
GP-020073	CR 48.058-005 rev 1 Alignment of speech codecs references in GERAN specifications (Rel 4)	Nortel Networks	Approved
GP-020070	CR 48.058-006 Alignment of speech codecs references in GERAN specifications (Rel 5)	Nortel Networks	Approved
GP-020182	CR 48.060-001 Handover_Complete (Rel 4)	Ericsson, Nokia, Nortel Networks, Siemens, Vodafone	Approved
GP-020179	CR 48.061-001 Correct synchronisation description for HR_AMR (Rel 4)	Ericsson, Nokia, Nortel Networks, Siemens, Vodafone	Approved
GP-020158	CR 48.071-008 rev 1 Addition of LAC optional to BSSLAP Reset (Rel 4)	Siemens	Approved
GP-020038	CR 49.031-017 rev 1 Transparent Address in Network Element Identity (Rel 5)	Ericsson	Revised
GP-020433	CR 49.031-017 rev 2 Transparent Address in Network Element (Rel-5)	Ericsson	Approved
GP-020203	CR 49.031-018 Correction of Requested Data in Message Format (Rel 5)	Motorola	Revised
GP-020446	CR 49.031-018 rev 1 Correction of Requested Data in Message Format (Rel-5)	Motorola	Postponed
GP-020399	CR 51.010-1-422 rev 1 on S52.1 EGPRS Tests for MAC procedures on PCCCH in Idle Mode Rel-4	Sasken	Approved
GP-020321	CR 51.010-1-466 rev 1 Introduction of AMR layer 1 tests, reference sensitivity	Motorola	Postponed
GP-020322	CR 51.010-1-467 rev 1 Introduction of AMR layer 1 tests, Co-channel rejection	Motorola	Postponed
GP-020318	CR 51.010-1-468 rev 1 Introduction of AMR layer 1 tests, section 14 general part	Motorola	Postponed
GP-020319	CR 51.010-1-469 rev 1 Introduction of the test "Bad frame indication - TCH/AFS - Random RF input	Motorola	Revised
GP-020390	CR 51.010-1-469 rev 2 Introduction of the test "Bad frame indication - TCH/AFS - Random RF input	Motorola	Approved
GP-020320	CR 51.010-1-470 rev 1 Introduction of the test "Bad frame indication - TCH/AHS - Random RF input" for AMR in 51.010-1	Motorola	Revised
GP-020391	CR 51.010-1-470 rev 2 Introduction of the test "Bad frame indication - TCH/AHS - Random RF input" for AMR in 51.010-1	Motorola	Approved
GP-020398	CR 51.010-1-476 rev 1 testcase 41.2.3.10 Access burst content is not correct	Setcom	Approved
GP-020028	CR 51.010-1-529 45.2.2 - Extension of reject causes to match conformance requirements	7 layers	Revised
GP-020361	CR 51.010-1-529 rev 1 45.2.2 - Extension of reject causes to match conformance requirements	7 layers	Approved
GP-020030	CR 51.010-1-530 E-OTD Test Case for NI - LR on the TCH radio channel, LCS Clause 70.2.4 (Rel-4)	Ericsson	Approved

Tdoc	Title	Source	Status
GP-020031	CR 51.010-1-531 E-OTD Test Case for MT- LR Location Notification, LCS Clause 70.4.1 (Rel-4)	Ericsson	Approved
GP-020032	CR 51.010-1-532 E-OTD Test Case for MT- LR Privacy Options - Location Allowed, LCS Clause 70.4.2.1 (Rel-4)	Ericsson	Approved
GP-020033	CR 51.010-1-533 E-OTD Test Case for MT- LR Privacy Options - Location NotAllowed, LCS Clause 70.4.2.2 (Rel-4)	Ericsson	Approved
GP-020034	CR 51.010-1-534 clause 41.2.3 - One phase packet access / TBF starting time	Ericsson	Revised
GP-020392	CR 51.010-1-534 rev 1 clause 41.2.3 - One phase packet access / TBF starting time	Ericsson	Revised
GP-020396	CR 51.010-1-534 rev 2 clause 41.2.3 - One phase packet access / TBF starting time	Ericsson	Approved
GP-020035	CR 51.010-1-535 clause 42.1.3.2.9 - PACKET UPLINK ASSIGNMENT message (fixed allocation)	Ericsson	Approved
GP-020036	CR 51.010-1-536 clause 40 - GPRS default conditions, message contents and macros	Ericsson, Nokia	Revised
GP-020231	CR 51.010-1-536 rev 1 clause 40 - GPRS default conditions, message contents and macros	Ericsson, Nokia	Approved
GP-020047	CR 51.010-1-537 rev 1 Sec. TC 14.16.2.1: Co-channel rejection for packet channels	Siemens	Approved
GP-020059	CR 51.010-1-538 Sec. TC 44.2.3.2.3: Order of Location Update and RAU Complete	Siemens	Revised
GP-020366	CR 51.010-1-538 rev 1 Sec. TC 44.2.3.2.3: Order of Location Update and RAU Complete	Siemens	Approved
GP-020063	CR 51.010-1-539 on update of references	MCC	Approved
GP-020066	CR 51.010-1-540 Sec 44.2.3.2.6 Combined routing area updating / abnormal cases / access barred due to access class control	Rohde & Schwarz	Approved
GP-020067	CR 51.010-1-541 Sec 44.2.5.1.2 Authentication rejected	Rohde & Schwarz	Revised
GP-020365	CR 51.010-1-541 rev 1 Sec 44.2.5.1.2 Authentication rejected	Rohde & Schwarz	Approved
GP-020077	CR 51.010-1-542 Incompatibility between PDP context activated and the access procedure in section 42.2.2	Setcom	Withdrawn
GP-020078	CR 51.010-1-543 Test case 42.1.1.3 specified in a wrong way	Setcom	Approved
GP-020079	CR 51.010-1-544 precision is test case 41.3.1.1 and additional optional steps needed	Setcom	Revised
GP-020465	CR 51.010-1-544 rev 1 precision is test case 41.3.1.1 and additional optional steps needed	Setcom	Approved
GP-020080	CR 51.010-1-545 removal of a param not existent in PSI_1 for Test case 41.1.1.3	Setcom	Approved
GP-020081	CR 51.010-1-546 42.3.1.1.2 specified in a wrong way (T3180 could expire).	Setcom	Revised
GP-020466	CR 51.010-1-546 rev 1 42.3.1.1.2 specified in a wrong way (T3180 could expire).	Setcom	Approved
GP-020082	CR 51.010-1-547 PACKET DOWNLINK DUMMY CTRL message does not contain TFI in 42.3.1.1.6	Setcom	Approved
GP-020083	CR 51.010-1-548 wrong use of PACKTE TIMESLOT RECONFIGURE in 42.3.2.1.1	Setcom	Withdrawn
GP-020092	CR 51.010-1-549 Correction to section 20.22.6 and 20.22.7 - Cell Reselection (Rel 4)	Nokia	Revised
GP-020393	CR 51.010-1-549 rev 1 Correction to section 20.22.6 and 20.22.7 - Cell Reselection (Rel 4)	Nokia	Revised
GP-020470	CR 51.010-1-549 rev 2 Correction to section 20.22.6 and 20.22.7 - Cell Reselection (Rel 4)	Nokia	Approved
GP-020093	CR 51.010-1-550 Correction to section 41.1.1.3 - RR / Paging / on PCCCH for GPRS service / extended paging with P-TMSI successful (Rel 4)	Nokia	Approved
GP-020094	CR 51.010-1-551 Correction to section 41.2.3.6; 41.2.3.7; 41.2.3.10 and 41.2.3.11 - One phase packet access (Rel 4)	Nokia	Approved
GP-020095	CR 51.010-1-552 Correction to section 41.3.2.1 - TBF Release / Uplink / Normal / Network initiated / Acknowledged mode (Rel 4)	Nokia	Approved

Tdoc	Title	Source	Status
GP-020096	CR 51.010-1-553 Correction to section 41.3.3 - TBF Release / Uplink / Network initiated / Abnormal release (Rel 4)	Nokia	Approved
GP-020097	CR 51.010-1-554 Correction to section 41.3.5.2 - PDCH Release / With TIMESLOTS_AVAILABLE (Rel 4)	Nokia	Approved
GP-020098	CR 51.010-1-555 Correction to section 42.1.2.1.8.1.1; 42.1.2.1.8.1.2; 42.1.2.1.8.1.3; 42.1.2.1.8.2.1; 42.1.2.1.8.2.2 and 42.1.2.1.8.2.3 - Packet Uplink Assignment / One phase access (Rel 4)	Nokia	Withdrawn
GP-020099	CR 51.010-1-556 Correction to section 43.3.1.1 - Message Content / Packet Uplink Assignment (Rel 4)	Nokia	Approved
GP-020100	CR 51.010-1-557 Correction to section 51.1.1.3 - RR / Paging / on PCCCH for EGPRS service / extended paging with P-TMSI successful (Rel 4)	Nokia	Approved
GP-020101	CR 51.010-1-558 Correction to sections 53.1.1.17, 53.1.1.19, 53.1.1.20 and 53.1.1.21 - Acknowledged Mode/ Uplink TBF (Rel 4)	Nokia	Approved
GP-020102	CR 51.010-1-559 Correction to sections 53.1.2.8, 53.1.2.10, 53.1.2.12 and 53.1.2.13 - Acknowledged Mode/ Downlink TBF (Rel 4)	Nokia	Approved
GP-020103	CR 51.010-1-560 Correction to section 44.2.1.2.2 - Combined GPRS attach / GPRS only attach accepted (Rel 4)	Nokia	Approved
GP-020104	CR 51.010-1-561 Correction to section 44.2.1.2.8 - Combined GPRS attach / abnormal cases / attempt counter check / miscellaneous reject causes (Rel 4)	Nokia	Approved
GP-020105	CR 51.010-1-562 Correction to section 44.2.3.3.4 - Periodic routing area updating / no cell available (Rel 4)	Nokia	Approved
GP-020106	CR 51.010-1-563 Correction to sections 44.2.1.1.7; 44.2.2.1.8; 44.2.3.1.2; 44.2.3.1.3; 44.2.3.1.5; 44.2.3.1.6; 44.2.3.1.7; 44.2.3.1.8; 44.2.3.2.3; 44.2.3.2.4; 44.2.3.2.8; 44.2.3.2.9; 44.2.3.2.10 and 44.2.3.3.3 - (Rel 4)	Nokia	Approved
GP-020107	CR 51.010-1-564 Correction to section 44.2.1.1.6 - GPRS attach / abnormal cases / access barred due to access class control (Rel 4)	Nokia	Approved
GP-020136	CR 51.010-1-565 clause 45.2 SNDCP Tests: Consideration of possible ICMP messages	Rohde & Schwarz	Withdrawn
GP-020142	CR 51.010-1-566 Clause 44.2.1.2.6 - Combined GPRS attach / rejected / GPRS services not allowed (Rel-4)	Motorola	Approved
GP-020143	CR 51.010-1-567 Clause 26.16 - Adaptive Multi Rate Signalling – RATSCCCH procedures (Rel-4)	Motorola	Rejected
GP-020144	CR 51.010-1-568 Clause 20.22 - GPRS Cell Selection and Reselection (Rel-4)	Motorola	Approved
GP-020145	CR 51.010-1-569 Clause 20.22.2 - Cell reselection in Packet Idle Mode (Rel-4)	Motorola	Approved
GP-020146	CR 51.010-1-570 Clause 20.22.3 - Priority of cells (Rel-4)	Motorola	Revised
GP-020469	CR 51.010-1-570 rev 1 Clause 20.22.3 - Priority of cells (Rel-4)	Motorola	Approved
GP-020147	CR 51.010-1-571 Clause 42.1.2.1.13 - Several PCCCHs supported by the cell (Rel-4)	Motorola	Approved
GP-020149	CR 51.010-1-572 Clause 42.1.2.1.8.1.2 - Packet Uplink Assignment / One phase access / Contention resolution / Counter N3104 (Rel-4)	Motorola	Approved
GP-020166	CR 51.010-1-573 Test cases 41.2.3.6 : One phase packet access / Contention resolution / Counter N3104	Alcatel	Revised
GP-020468	CR 51.010-1-573 rev 1 Test cases 41.2.3.6 : One phase packet access / Contention resolution / Counter N3104	Alcatel	Approved
GP-020167	CR 51.010-1-574 Test cases 42.1.2.1.8.1.2 : Packet Uplink Assignment / One phase access / Contention resolution / Counter N310	Alcatel	Revised
GP-020467	CR 51.010-1-574 rev 1 Test cases 42.1.2.1.8.1.2 Packet uplink assignment / One phase access / Contention resolution / Counter N3104	Alcatel	Revised
GP-020472	CR 51.010-1-574 rev 2 Test cases 42.1.2.1.8.1.2 : Packet Uplink Assignment / One phase access / Contention resolution / Counter N310	Alcatel	Approved
GP-020168	CR 51.010-1-575 Test cases 42.2.2.1.1 / 42.2.2.1.2 : Fixed Allocation / Uplink Transfert / Normal operation	Alcatel	Approved

Tdoc	Title	Source	Status
GP-020169	CR 51.010-1-576 Test cases 42.2.2.7.1 / 42.2.2.7.2 / 42.2.2.7.3 / 42.2.2.7.4 : Fixed Allocation / Uplink Transfert / MS requests new resources/ Successful	Alcatel	Approved
GP-020170	CR 51.010-1-577 Test cases 42.2.2.6.1 / 42.2.2.6.2 / 42.2.2.6.3 / 42.2.2.6.4 / 42.2.2.6.5 / 42.2.2.7.1 / 42.2.2.7.2 / 42.2.2.7.3 / 42.2.2.7.4 / 42.2.2.8.1 / 42.2.2.8.2? Fixed Allocation / Uplink Transfer / MS requests new resources	Alcatel	Approveds
GP-020171	CR 51.010-1-578 Test case 26.12.1- EFR signalling/ test of the channel mode modify procedure	Alcatel	Approved
GP-020172	CR 51.010-1-579 Test cases 44.2.3.2.9 - Combined routing area updating / abnormal cases / change of cell during routing area updating procedure	Alcatel	Rejected
GP-020205	CR 51.010-1-580 LCS Classmark Interrogation test case for clause 70.7.2 (MS-Based A-GPS) of TS 51.010-1	Qualcomm	Revised
GP-020368	CR 51.010-1-580 rev 1 LCS Classmark Interrogation test case for clause 70.7.2 (MS-Based A-GPS) of TS 51.010-1	Qualcomm	Revised
GP-020377	CR 51.010-1-580 rev 2 LCS Classmark Interrogation test case for clause 70.7.2 (MS-Based A-GPS) of TS 51.010-1	Qualcomm	Approved
GP-020206	CR 51.010-1-581 LCS Classmark Interrogation test case for clause 70.7.2 (MS-Assisted A-GPS) of TS 51.010-1	Qualcomm	Revised
GP-020369	CR 51.010-1-581 rev 1 LCS Classmark Interrogation test case for clause 70.7.2 (MS-Assisted A-GPS) of TS 51.010-1	Qualcomm	Approved
GP-020207	CR 51.010-1-582 LCS test cases to TS 51.010-1 clause 70.7.1 - Network Induced A-GPS (MS-Based) Emergency Call on an SDCCH, Idle, no IMSI	Qualcomm	Revised
GP-020370	CR 51.010-1-582 rev 1 LCS test cases to TS 51.010-1 clause 70.7.1 - Network Induced A-GPS (MS-Based) Emergency Call on an SDCCH, Idle, no IMSI	Qualcomm	Approved
GP-020208	CR 51.010-1-583 LCS test cases to TS 51.010-1 clause 70.7.1 - Network Induced A-GPS (MS-Assisted) Emergency Call on an SDCCH, Idle, no IMSI	Qualcomm	Revised
GP-020372	CR 51.010-1-583 rev 1 LCS test cases to TS 51.010-1 clause 70.7.1 - Network Induced A-GPS (MS-Assisted) Emergency Call on an SDCCH, Idle, no IMSI	Qualcomm	Approved
GP-020209	CR 51.010-1-584 LCS test case to TS 51.010-1 clause 70.7.3 - Network Induced A-GPS (MS-Based) test on an SDCCH radio channel	Qualcomm	Revised
GP-020373	CR 51.010-1-584 rev 1 LCS test case to TS 51.010-1 clause 70.7.3 - Network Induced A-GPS (MS-Based) test on an SDCCH radio channel	Qualcomm	Approved
GP-020210	CR 51.010-1-585 LCS test case to TS 51.010-1 clause 70.7.3 - Network Induced A-GPS (MS-Assisted) test on an SDCCH radio channel	Qualcomm	Revised
GP-020374	CR 51.010-1-585 rev 1 LCS test case to TS 51.010-1 clause 70.7.3 - Network Induced A-GPS (MS-Assisted) test on an SDCCH radio channel	Qualcomm	Approved
GP-020227	CR 51.010-1-586 TC 14.16.2.1 Co-channel rejection for packet channels work item code	Alcatel	Approved
GP-020228	CR 51.010-1-587 clause 42.1.2.1.6 - Packet Uplink Assignment / Decoding of frequency parameters	Ericsson	Revised
GP-020395	CR 51.010-1-587 rev 1 clause 42.1.2.1.6 - Packet Uplink Assignment / Decoding of frequency parameters	Ericsson	Approved
GP-020229	CR 51.010-1-588 clause 42.5.5.3 - Downlink Transfer/ Reestablishment/ Invalid Frequency Parameters IE	Ericsson	Approved
GP-020235	CR 51.010-1-589 articles 41.2.6.1, 42.4.1.1, 42.4.1.3 & 42.4.2.1.1 – Use PDP Context 2 for acknowledged mode data transfer	Anite	Revised
GP-020501	CR 51.010-1-589 rev 1 articles 41.2.6.1, 42.4.1.1, 42.4.1.3 & 42.4.2.1.1 - Use PDP Context 2 for acknowledged mode data transfer	Anite	Approved

Tdoc	Title	Source	Status
GP-020236	CR 51.010-1-590 articles 42.1.2.1.1.3 , 42.1.2.1.5 & 42.1.2.1.6 Packet Uplink Assignment - USF Granularity in Uplink Assignment Needs To Increase For Attach Request Message	Anite	Revised
GP-020397	CR 51.010-1-590 rev 1 articles 42.1.2.1.1.3 , 42.1.2.1.5 & 42.1.2.1.6 Packet Uplink Assignment - USF Granularity in Uplink Assignment Needs To Increase For Attach Request Message	Anite	Approved
GP-020237	CR 51.010-1-591 article 41.1.6 - Alignment of "Test Procedure" to the "Expected Sequence"	Anite	Revised
GP-020394	CR 51.010-1-591 rev 1 article 41.1.6 - Alignment of "Test Procedure" to the "Expected Sequence"	Anite	Approved
GP-020238	CR 51.010-1-592 article 41.2.1.1 - Broadcast Of Priority Access Preventing MS Responding Should Be After The Required Network Initiated Context Change - WITHDRAWN	Anite	Withdrawn
GP-020239	CR 51.010-1-593 article 42.2.2.4 - Change of PDP Context From 2 to 3 Required For MS To Meet "Expected Sequence"	Anite	Revised
GP-020502	CR 51.010-1-593 rev 1 article 42.2.2.4 - Change of PDP Context From 2 to 3 Required For MS To Meet "Expected Sequence"	Anite	Approved
GP-020240	CR 51.010-1-594 article 20.22.27 - Correction of Procedure and Test Requirements	Anite	Withdrawn
GP-020241	CR 51.010-1-595 article 20.22.26 - Correction of step references in Test Requirements	Anite	Revised
GP-020381	CR 51.010-1-595 rev 1 article 20.22.26 - Correction of step references in Test Requirements (Rel 4)	Anite	Approved
GP-020242	CR 51.010-1-596 article 20.22.25 - Correction of step references in Test Requirements and carrier in Procedure	Anite	Revised
GP-020382	CR 51.010-1-596 rev 1 article 20.22.25 - Correction of step references in Test Requirements and carrier in Procedure (Rel 4)	Anite	Approved
GP-020243	CR 51.010-1-597 article 20.22.24 - Correction of step numbering in Procedure and step references in Test Requirements	Anite	Approved
GP-020244	CR 51.010-1-598 article 20.22.23 - Correction of step references in Test Requirements	Anite	Revised
GP-020383	CR 51.010-1-598 rev 1 article 20.22.23 - Correction of step references in Test Requirements (Rel 4)	Anite	Approved
GP-020245	CR 51.010-1-599 article 20.22.20 - Correction of Procedure and Test Requirements	Anite	Revised
GP-020384	CR 51.010-1-599 rev 1 article 20.22.20 - Correction of Procedure and Test Requirements (Rel 4)	Anite	Revised
GP-020471	CR 51.010-1-599 rev 2 article 20.22.20 - Correction of Procedure and Test Requirements (Rel 4)	Anite	Approved
GP-020246	CR 51.010-1-600 article 20.22.18 - Correction of step references in Test Requirements	Anite	Revised
GP-020385	CR 51.010-1-600 rev 1 article 20.22.18 - Correction of step references in Test Requirements (Rel 4)	Anite	Approved
GP-020296	CR 51.010-1-601 on clause 26.6.6.1 - Frequency Redefinition	Anite	Approved
GP-020297	CR 51.010-1-602 on clause 26.6.3.2 - Measurement / all neighbours present	Anite	Approved
GP-020298	CR 51.010-1-603 on clause 26.6.3.3 - Measurement / barred cells and non-permitted NCCs	Anite	Approved
GP-020299	CR 51.010-1-604 on clause 26.6.4.1 - Dedicated assignment / successful case	Anite	Approved
GP-020300	CR 51.010-1-605 article 44.2.3.2.5.3.1 -Combined routing area updating / rejected / roaming not allowed in this location area	Anite	Approved
GP-020334	CR 51.010-1-606 Test cases 44.2.3.2.8 - Combined routing area updating / abnormal cases / change of cell into new routing area	Alcatel	Rejected
GP-020341	CR 51.010-1-607 Correction to section 44.2.3.1.4 - Routing area updating / rejected / location area not allowed (Rel 4)	Nokia	Approved
GP-020342	CR 51.010-1-608 Correction to section 44.2.3.2.6 - Combined routing area updating / abnormal cases / access barred due to access class control (Rel 4)	Nokia	Approved



Tdoc	Title	Source	Status
GP-020348	CR 51.010-1-609 Sec 46.2 SNDCP Tests - Consideration of ICMP messages	Rohde & Schwarz	Rejected
GP-020350	CR 51.010-1-610 Sec. TC 44.2.1.2.6 Combined GPRS attach / rejected / GPRS services not allowed	Siemens	Revised
GP-020362	CR 51.010-1-610 rev 1 Sec. TC 44.2.1.2.6 Combined GPRS attach / rejected / GPRS services not allowed	Siemens	Approved
GP-020364	CR 51.010-1-612 Clause 40 - GPRS default conditions, message contents and macros	Rohde & Schwarz	Approved
GP-020386	CR 51.010-1-613 Editorial correction on input level on 14.3.4.2 (Rel 4)	Nokia	Approved
GP-020387	CR 51.010-1-614 E-OTD Timing Measurement Accuracy	Ericsson	Approved
GP-020388	CR 51.010-1-615 rev 1 Annex 6 for E-OTD Accuracy Measurement Test Environment	Ericsson	Approved
GP-020389	CR 51.010-1-616 on E-OTD Sensitivity Performance	Ericsson	Approved
GP-020400	CR 51.010-1-617 Introduction and Default Conditions for LCS Clause 70	Ericsson	Approved
GP-020029	CR 51.010-2-041 Applicability Table for E-OTD Test Cases for LCS Clause 70 (Rel-4)	Ericsson	Revised
GP-020367	CR 51.010-2-041 rev 1 Applicability Table for E-OTD Test Cases for LCS Clause 70 (Rel-4)	Ericsson	Approved
GP-020064	CR 51.010-2-042 on update of references	MCC	Approved
GP-020141	CR 51.010-2-043 PICS update for GERAN to UTRAN Handover test cases (Rel 4)	Motorola	Withdrawn
GP-020148	CR 51.010-2-044 PICS update for 42.1.2.1.13 Several PCCCHs supported by the cell (Rel-4)	Motorola	Approved
GP-020371	CR 51.010-2-045 Addition of LCS test cases to the Applicability Tables A2 and B.1	Qualcomm	Revised
GP-020378	CR 51.010-2-045 rev 1 Addition of LCS test cases to the Applicability Tables A2 and B.1	Qualcomm	Approved
GP-020065	CR 51.010-3-013 on update of references	MCC	Approved