

Palm Springs, USA, 07 - 09 September 2004

Presentation of Specification to TSG or WG

Presentation to: TSG RAN Meeting #25

Documents for presentation: TS 25.461: UTRAN Iuant Interface: Layer 1
Version 1.0.0

Presented for: Approval

Abstract of document:

At TSG-RAN#19 the "Work Item Description for Remote Control of Electrical Tilting Antennas" (RP-030193) was approved. The new Technical Specification 25.461 specifies the standards allowed to implement Layer 1 on the Iuant interface. There are two layer 1 options, a RS485 option and a modem option.

Changes since last presentation to TSG RAN Meeting #24:

- The open issues in the draft versions of the specifications were solved in RAN3
 - The Technical Specification 25.461 for Iuant was prepared for approval at TSG-RAN#25
-

Outstanding Issues:

Some minor open issues were identified which can be handled via CRs during the next WG meetings:

- Change in TS25.141 maybe needed
 - "TBD" for TS25.461 needs to be clarified
 - An annex for the requirements on testing in TS25.461 maybe required
 - Change Requests for the TSs can be expected in the next RAN3 meetings to solve editorial mistakes.
 - The WI level of completion is 95%.
-

Contentious Issues:

No contentious issues are open.

3GPP TS 25.461 V1.0.0 (2004-09)

Technical Specification

3rd Generation Partnership Project; Technical Specification Group Radio Access Network; UTRAN Iuant Interface: Layer 1 (Release 6)



The present document has been developed within the 3rd Generation Partnership Project (3GPP™) and may be further elaborated for the purposes of 3GPP.

The present document has not been subject to any approval process by the 3GPP Organizational Partners and shall not be implemented. This Specification is provided for future development work within 3GPP only. The Organizational Partners accept no liability for any use of this Specification. Specifications and reports for implementation of the 3GPP™ system should be obtained via the 3GPP Organizational Partners' Publications Offices.

Keywords

UMTS, radio

3GPP

Postal address

3GPP support office address

650 Route des Lucioles - Sophia Antipolis
Valbonne - FRANCE
Tel.: +33 4 92 94 42 00 Fax: +33 4 93 65 47 16

Internet

<http://www.3gpp.org>

Copyright Notification

No part may be reproduced except as authorized by written permission.
The copyright and the foregoing restriction extend to reproduction in all media.

© 2004, 3GPP Organizational Partners (ARIB, ATIS, CCSA, ETSI, TTA, TTC).
All rights reserved.

Contents

Foreword.....	4
1 Scope	5
2 References	5
3 Definitions, symbols and abbreviations.....	5
3.1 Definitions	5
3.2 Symbols	5
3.3 Abbreviations	5
4 Iuant Layer 1	6
4.1 General	6
4.2 RS485 Option	7
4.3 Modem Option.....	7
4.3.1 Interference with Existing Systems.....	8
4.3.1.1 Carrier frequency and frequency stability	8
4.3.1.2 Modem isolation and modem emissions	8
4.3.1.3 Modem intermodulation attenuation	8
4.3.2 Recovery Time.....	9
4.3.3 Impedance	9
4.3.4 Modulator Characteristics	9
4.3.4.1 Levels	9
4.3.4.2 Spectrum emission mask	9
4.3.5 Demodulator Characteristics	10
4.3.5.1 Threshold.....	10
4.3.6 Duty Cycle Variation	10
4.4 DC Power Supply	11
4.4.1 Power consumption.....	11
4.4.2 Conducted Emission	11
Annex A (informative): Change history.....	12

Foreword

This Technical Specification has been produced by the 3rd Generation Partnership Project (3GPP).

The contents of the present document are subject to continuing work within the TSG and may change following formal TSG approval. Should the TSG modify the contents of the present document, it will be re-released by the TSG with an identifying change of release date and an increase in version number as follows:

Version x.y.z

where:

- x the first digit:
 - 1 presented to TSG for information;
 - 2 presented to TSG for approval;
 - 3 or greater indicates TSG approved document under change control.
- y the second digit is incremented for all changes of substance, i.e. technical enhancements, corrections, updates, etc.
- z the third digit is incremented when editorial only changes have been incorporated in the document.

1 Scope

The present document specifies the standards allowed to implement Layer 1 on the Iuant interface.

The specification of transmission delay requirements and O&M requirements are not in the scope of the present document.

2 References

The following documents contain provisions which, through reference in this text, constitute provisions of the present document.

- References are either specific (identified by date of publication, edition number, version number, etc.) or non-specific.
- For a specific reference, subsequent revisions do not apply.
- For a non-specific reference, the latest version applies. In the case of a reference to a 3GPP document (including a GSM document), a non-specific reference implicitly refers to the latest version of that document *in the same Release as the present document*.

[1] 3GPP TS 25.462: "UTRAN Iuant Interface: Signalling Transport".

[2] ISO/IEC 8482 (1993): Information technology - Telecommunications and information exchange between systems - Twisted pair multipoint interconnections.

3 Definitions, symbols and abbreviations

3.1 Definitions

For the purposes of the present document, the following terms and definitions apply:

On-Off keying: A modulation system in which a carrier is switched between two states, ON and OFF.

Common Feeder Cable: Feeder cable where some antenna line devices (e.g. RET, TMA) are connected via the same feeder cable.

3.2 Symbols

void

3.3 Abbreviations

For the purposes of the present document, the following abbreviations apply:

BTS	Base Transceiver Station
DC	Direct Current
ISB	Idle-state biasing
OOK	On-Off-Keying
RET	Remote Electrical Tilt Unit
RF	Radio Frequency
TMA	Tower-Mounted Amplifier

4 Luant Layer 1

4.1 General

There are two layer 1 options:

- RS485 option: A screened multicore cable, which supports a conventional RS485 serial multi-drop bus.
- Modem option: A connection to a RET control unit by way of a coaxial cable which is shared with DC supply and RF signals.

Both layer 1 options support the connection of two-way serial data and DC power to the RET antenna device.

At least one of these two layer 1 options needs to be supported.

The default data rate for both layer 1 options shall be 9.6 kbps. Higher data rates of 38.4 kbps for both layer 1 options and 115.2 kbps only for the RS485 layer 1 option may optionally be supported. Each unit communicates on one of the three data rates, but different units on the same interface may use different data rates.

After any reset, a secondary station shall alternate between supported data rates. When alternating between data rates, the rate shall be held constant for 300 ms. After every successful reception of a device scan command, see [1], at a data rate, that data rate shall be held constant for 1.5 seconds. After successful reception of an address assignment at a data rate, the secondary station shall use that data rate until it is reset.

Data rates:

- 9.6 kbps \pm 3 %
- 38.4 kbps \pm 3 %
- 115.2 kbps \pm 3 %

The format of the data octet shall be:

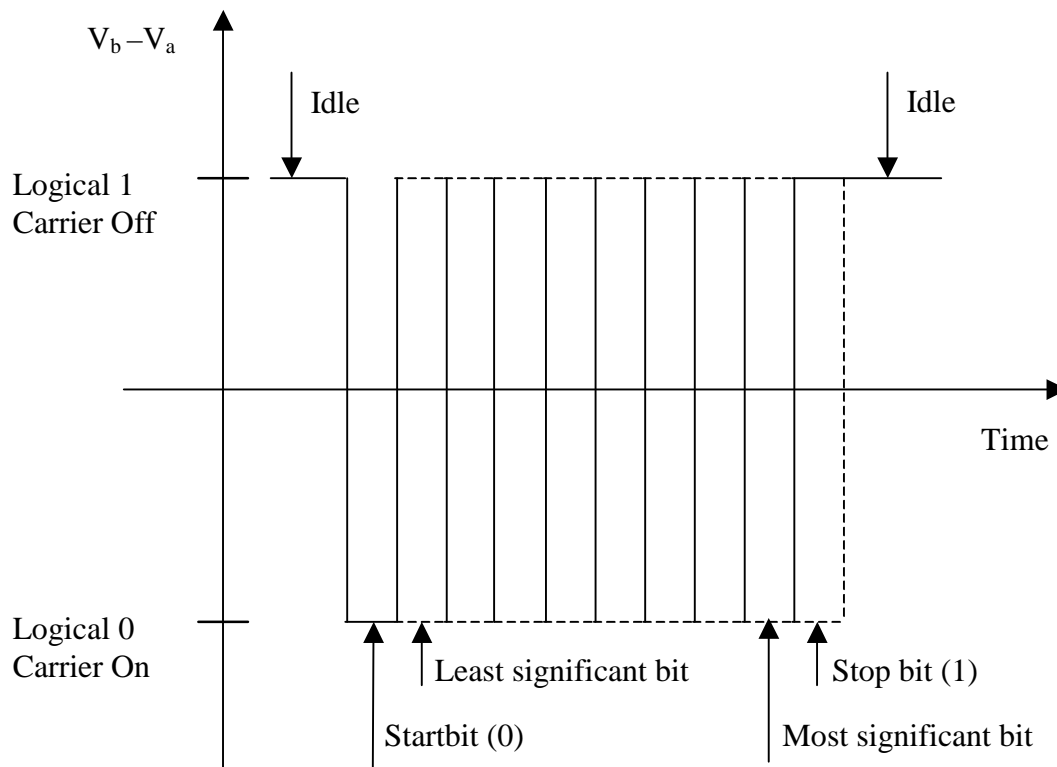


Figure 4.1: Format and order of transmitted data

4.2 RS485 Option

This option are constituted by a two wire bi-directional multi-drop configuration conforming to [2]. The mapping of mark/space to logical one and zero as referred to in [2] shall be according to figure 4.1.

The use of Idle-State Biasing (ISB) is mandatory and all secondary devices shall be capable of supporting its use. The bias voltages shall be applied by the primary station to any separate RS485 bus. The polarity of the idle-state bias is defined as a transmitted 1.

NOTE: If a RET modem is used ISB must be implemented by the RET modem.

4.3 Modem Option

The connection to a RET control unit by way of a coaxial cable which is shared with DC supply and RF signals is provided by two modems, a BS modem and a RET modem. The BS modem shall be either connected to the antenna connector of the BS or integrated in the BS. It provides signal transmission to the RET modem and signal reception from the RET modem over the antenna feeder cable. The RET modem is located between antenna feeder cable and antenna. Modem configurations and reference points for modem characteristics are specified in figure 4.2 and figure 4.3. Unless otherwise stated, requirements in this section apply to BS modem and RET modem.

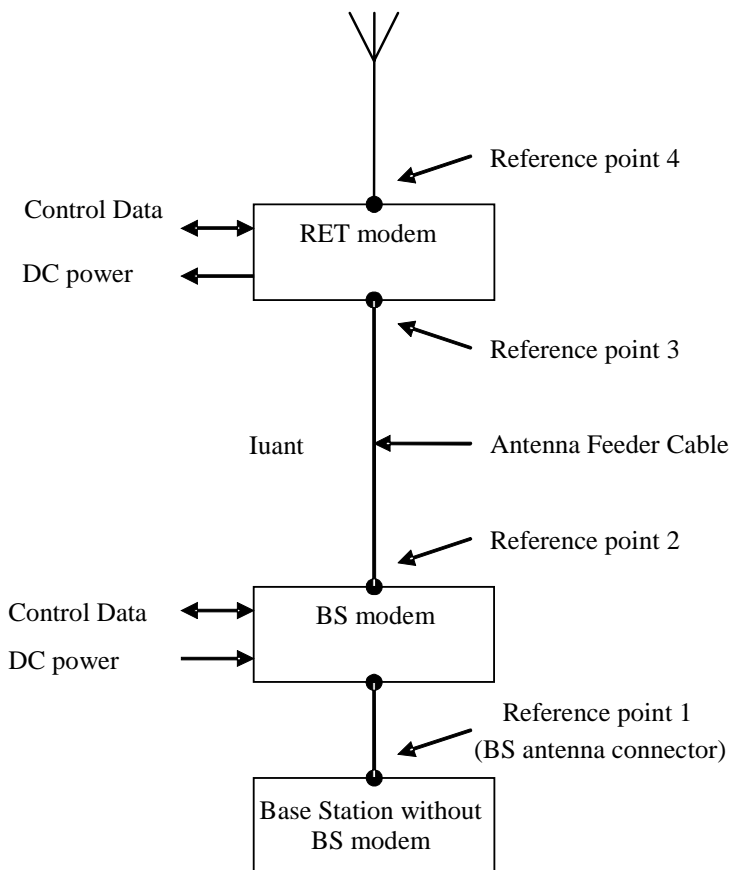


Figure 4.2: Modem configuration and modem reference points for base station without BS modem

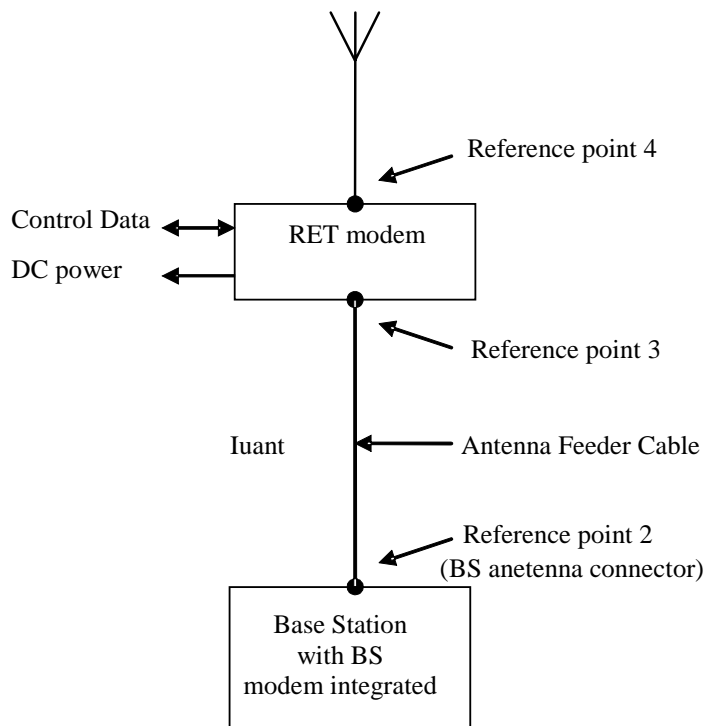


Figure 4.3: Modem configuration and modem reference points for base station with integrated BS modem

4.3.1 Interference with Existing Systems

The modem circuit shall be capable of managing its transmitting characteristic according to subclause 4.3.5.

4.3.1.1 Carrier frequency and frequency stability

The following carrier frequency shall be used for this application:

$$2.176 \text{ MHz} \pm 100 \text{ ppm}$$

4.3.1.2 Modem isolation and modem emissions

The BS modem shall provide at least 41 dB attenuation for frequencies below 400 MHz between reference point 2 and reference point 1 to protect the base station from emissions of the RET modem.

BS modem emissions at reference point 1 for frequencies below 400 MHz shall be at least 41 dB below the levels specified for the modem spectrum emission mask in subclause 4.3.5 to protect the base station from emissions of the BS modem.

The RET modem shall provide at least 41 dB attenuation for frequencies below 400 MHz between reference point 3 and reference point 4 to protect other radio systems from emission of the BS modem.

RET modem emissions at reference point 4 for frequencies below 400 MHz shall be at least 41 dB below the levels specified for the modem spectrum emission mask in subclause 4.4.5 to protect other radio systems from emission of the RET modem.

4.3.1.3 Modem intermodulation attenuation

BS modem and RET modem shall provide intermodulation attenuation of [TBD] at a interferer level of [TBD].

4.3.2 Recovery Time

A minimum recovery time shall be allowed between receiving and transmitting messages on the bus. For this reason a minimum permitted response time is specified in subclause 4.5 in [1].

4.3.3 Impedance

The modem transceiver shall provide constant impedance in both transmitting and receiving modes:

- Nominal impedance Z_0 : 50 Ω .
- Return loss at nominal modem carrier frequency > 6 dB.
- Return loss in base station operating band [TBD].

4.3.4 Modulator Characteristics

4.3.4.1 Levels

- ON-Level: +3 dBm \pm 2 dB
- OFF-Level: \leq -40 dBm

4.3.4.2 Spectrum emission mask

The modem spectrum emission mask is specified in figure 4.4. Intermediate values may be obtained by linear interpolation between the points shown. The corresponding measurement bandwidths are specified in table 4.1. For modem configurations according to figure 4.2 the BS modem shall meet the spectrum emission mask at reference point 2. For modem configurations according to figure 4.3 the base station with BS modem integrated shall meet the spectrum emission mask at reference point 2 only for frequencies below 400 MHz. RET modems shall meet the spectrum emission mask at reference point 3.

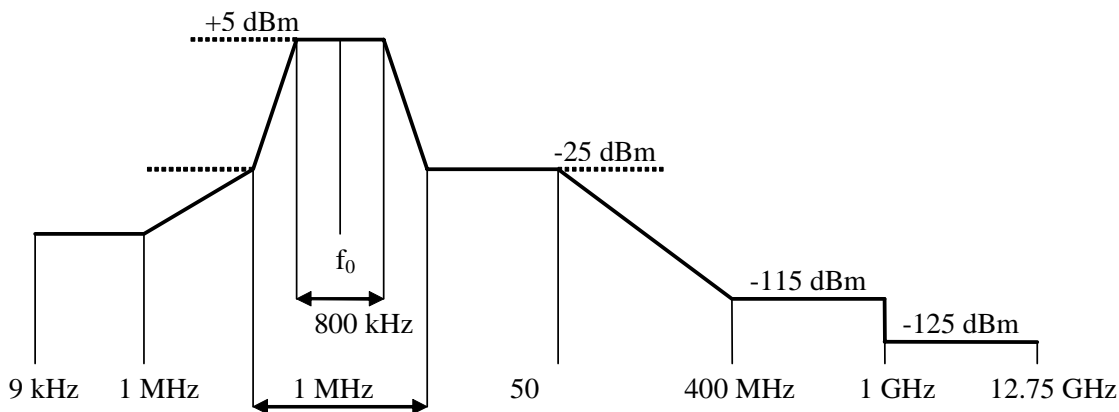


Figure 4.4: Modem spectrum emission mask.

Table 4.1: Modem spectrum emission mask measurement bandwidth

Band	Measurement Bandwidth
9 kHz - 150 kHz	1 kHz
150 kHz - 30 MHz	10 kHz
30 MHz - 1 GHz	100 kHz
1 GHz - 12.75 GHz	1 MHz

4.3.5 Demodulator Characteristics

4.3.5.1 Threshold

Threshold: -15 dBm ± 3 dB

4.3.6 Duty Cycle Variation

In order to guarantee proper transmission of data bits through the processes of modulation and demodulation, the following limit shall be met for the duty cycle variation:

$$\Delta DC_{SYSTEM} = |DC_{RX} - DC_{TX}| \leq 10 \%$$

Where: ΔDC_{SYSTEM} is the difference between the duty cycles of the transmitted and received bit streams,

DC_{TX} = Duty cycle for the input bit stream, and

DC_{RX} = Duty cycle for the output bit stream.

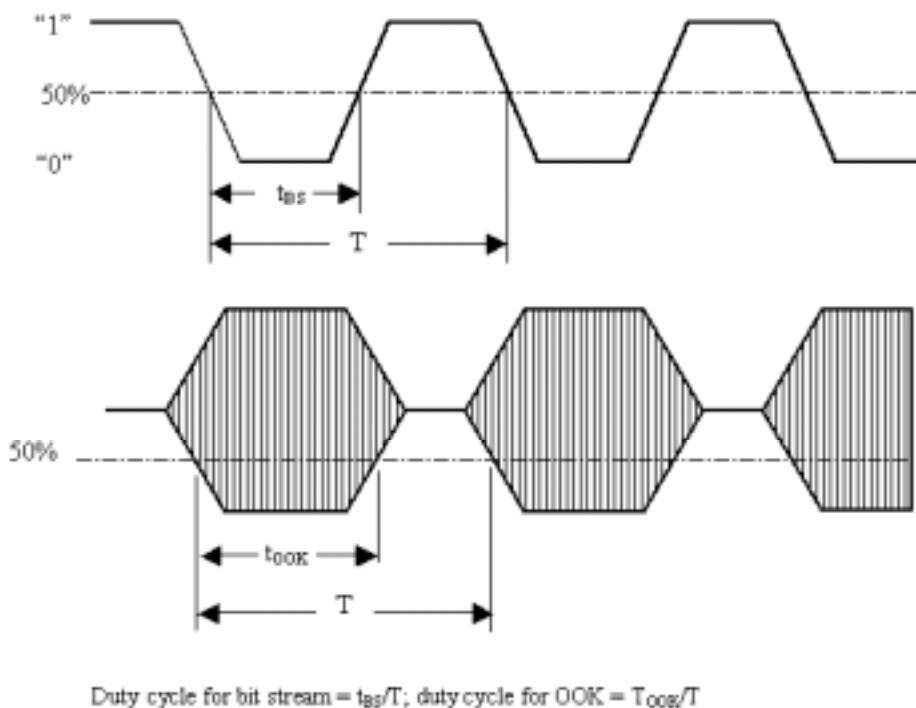


Figure 4.5: Duty cycles of the bit stream and OOK modulated subcarrier

For transmission through a coaxial cable, two converters are required, one from a bit stream to OOK (modulator) and one from OOK back to a bit stream (demodulator), so for each converter half of the total duty cycle tolerance is available.

For an input bit stream with a duty ratio of 50%, the cascaded modulator and demodulator shall provide an output bit stream with a duty ratio within the limits 40% - 60%, measured in each case at 0.5 times peak amplitude (see figure 4.5).

4.4 DC Power Supply

4.4.1 Power consumption

The reference point for the DC supply shall be on the secondary device.

The RET shall be able to operate with a DC supply voltage range: 10 V – 30 V.

The RET maximum power consumption shall be in operating mode < 15 W and in quiescent mode < 2 W.

4.4.2 Conducted Emission

The levels of generated conducted noise and ripple on DC Power supply shall be within the limits given in table 4.2.

Table 4.2: Noise and ripple

Item	Limit	Frequency	Remarks
RET operate	70 mV _{pp}	0.15 - 30 MHz	Only one operating unit a time
RET quiescent	20 mV _{pp}	0.15 - 30 MHz	

All RET units connected to a DC supply bus shall exhibit full performance up to the limit of 112 mV_{pp} total noise and ripple within 0.15 - 30 MHz.

Annex A (informative): Change history

Change history							
Date	TSG #	TSG Doc.	CR	Rev	Subject/Comment	Old	New
September 2004	TSG-RAN#25	RP-040304	-	-	presentation to TSG-RAN for information	-	1.0.0