

TSG RAN Meeting #19
Birmingham, UK, 11 - 14 March 2003

RP-030057

Title CRs (Rel-4 and Rel-5 Category A) to TS 25.419 on Correction of Write and Replace functions
Source TSG RAN WG3
Agenda Item 8.3.4

RAN3 Tdoc	Spec	curr. Vers.	new Vers.	REL	CR	Rev	Cat	Title	Work item
R3-030290	25.419	4.6.0	4.7.0	REL-4	107	1	F	Correction of Write and Replace functions	TEI4
R3-030291	25.419	5.2.0	5.3.0	REL-5	108	1	A	Correction of Write and Replace functions	TEI4

3GPP TSG-RAN3 Meeting #34
Sophia, France, 17th-21th February 2003

Tdoc #R3-030290

CR-Form-v7

CHANGE REQUEST

25.419 CR 107 # rev 1 # Current version: 4.6.0

For **HELP** on using this form, see bottom of this page or look at the pop-up text over the # symbols.

Proposed change affects: UICC apps# ME Radio Access Network Core Network

Title:	# Correction of Write and Replace functions of SABP
Source:	# RAN WG3
Work item code:	# TEI4
Date:	# 17/02/2003
Category:	# F
	Use <u>one</u> of the following categories:
	F (correction)
	A (corresponds to a correction in an earlier release)
	B (addition of feature),
	C (functional modification of feature)
	D (editorial modification)
	Detailed explanations of the above categories can be found in 3GPP TR 21.900 .
Release:	# Rel-4
	Use <u>one</u> of the following releases:
	2 (GSM Phase 2)
	R96 (Release 1996)
	R97 (Release 1997)
	R98 (Release 1998)
	R99 (Release 1999)
	Rel-4 (Release 4)
	Rel-5 (Release 5)
	Rel-6 (Release 6)

Reason for change:	# The unsuccessful outcome is not defined for the Write function of Write-Replace procedure as in TS23.041 to the opposite of the Replace function which is defined in line with TS23.041. The failure of the Write or the Replace function in one or several Service Area(s) does not lead to termination of the Write-Replace procedure but only to an entry in the Failure List IE of the Write Replace Failure message for the impacted SAI(s).
Summary of change:	# The unsuccessful outcome is specified for the Write case of Write-Replace procedure in line with TS23.041. Unclarity is removed for the termination of the procedure. <u>Impact assessment towards the previous version of the specification (same release):</u> This CR has isolated impact towards the previous version of the specification (same release). This CR has an impact under functional and protocol point of view. The impact can be considered isolated because it only affects the Write and the Replace function of the protocol SABP.

Consequences if not approved:	⌘	Inter-working problems between CBC and RNC.
--------------------------------------	---	---

Clauses affected:	⌘	8.2.3											
Other specs affected:	⌘	<table border="1" style="display: inline-table;"> <tr> <td style="width: 20px;">Y</td> <td style="width: 20px;">N</td> </tr> <tr> <td>X</td> <td></td> </tr> <tr> <td></td> <td>X</td> </tr> <tr> <td></td> <td>X</td> </tr> </table>	Y	N	X			X		X	Other core specifications	⌘	TS 25.419 REL-5 CR108
		Y	N										
		X											
			X										
	X												
		Test specifications											
		O&M Specifications											
Other comments:	⌘												

How to create CRs using this form:

Comprehensive information and tips about how to create CRs can be found at <http://www.3gpp.org/specs/CR.htm>. Below is a brief summary:

- 1) Fill out the above form. The symbols above marked ⌘ contain pop-up help information about the field that they are closest to.
- 2) Obtain the latest version for the release of the specification to which the change is proposed. Use the MS Word "revision marks" feature (also known as "track changes") when making the changes. All 3GPP specifications can be downloaded from the 3GPP server under <ftp://ftp.3gpp.org/specs/> For the latest version, look for the directory name with the latest date e.g. 2001-03 contains the specifications resulting from the March 2001 TSG meetings.
- 3) With "track changes" disabled, paste the entire CR form (use CTRL-A to select it) into the specification just in front of the clause containing the first piece of changed text. Delete those parts of the specification which are not relevant to the change request.

8.2.3 Unsuccessful Operation

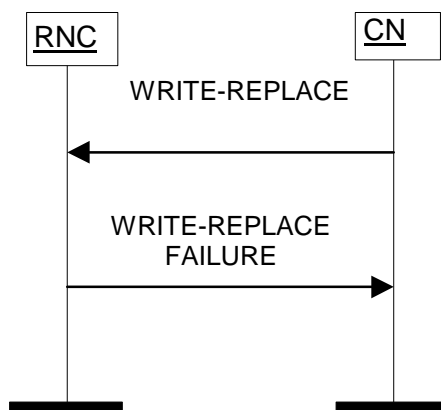


Figure 2: Write-Replace Procedure: Un-Successful Operation

If there is at least one Service Area specified in the WRITE-REPLACE message for which the RNC cannot allocate all the resources requested or for which the RNC cannot complete as requested, ~~for the Service Area(s) specified in the WRITE-REPLACE message,~~ then the RNC shall return a WRITE-REPLACE FAILURE message to the CN as an outcome of the procedure. A list of Service Area(s) where the requested resources are unavailable or for which the RNC cannot complete as requested and appropriate cause value shall be provided in this WRITE-REPLACE FAILURE message in the *Failure List* IE.

This WRITE-REPLACE FAILURE message may also include those Service Area(s) where the requested resources were available and shall indicate in the *Number of Broadcasts Completed* List IE those Service Area(s) which completed the request successfully.

If the WRITE-REPLACE message sent from the CN:

- ~~—~~ contained a *New Serial Number* IE but not an *Old Serial Number* IE, the *Number of Broadcasts* IE within the *Number of Broadcasts Completed* List IE is set to '0' for each included Service Area in the corresponding WRITE-REPLACE FAILURE message.
- contained a New Serial Number IE but not an Old Serial Number IE, and the New Serial Number IE is already used by the RNC. it shall consider the Write Replace procedure as failed for this Service Area and return a WRITE-REPLACE-FAILURE message with the Service Area Identifier of this particular Service Area included in the Failure List IE together with the cause value "Message-reference already-used".
- contained both the *New Serial Number* IE and the *Old Serial Number* IE, an entry is made in *Number of Broadcasts* IE in the *Number of Broadcasts Completed* List IE for each included Service Area in the corresponding WRITE-REPLACE FAILURE message.
- contained both the *New Serial Number* IE and the *Old Serial Number* IE, but if the *Old Serial Number* IE is unknown to the RNC (i.e. it can not execute the kill request) for a particular Service Area, it shall ~~terminate~~consider the Write Replace procedure as failed for this Service Area. When the procedure is completed, the RNC shall return and return a WRITE-REPLACE-FAILURE message which includes with the Service Area Identifier of this particular Service Area in the Failure List IE together with the appropriate cause value "Valid-CN-message-not-identified".

3GPP TSG-RAN3 Meeting #34
 Sophia, France, 17th-21th February 2003

Tdoc #R3-030291

CR-Form-v7			
CHANGE REQUEST			
#	25.419 CR	108	# rev 1 #
			Current version: 5.2.0 #

For **HELP** on using this form, see bottom of this page or look at the pop-up text over the # symbols.

Proposed change affects: UICC apps# ME Radio Access Network Core Network

Title:	# Correction of Write and Replace functions of SABP		
Source:	# RAN WG3		
Work item code:	# TEI4		Date: # 17/02/2003
Category:	# A		Release: # Rel-5
	<p>Use <u>one</u> of the following categories:</p> <ul style="list-style-type: none"> F (correction) A (corresponds to a correction in an earlier release) B (addition of feature), C (functional modification of feature) D (editorial modification) <p>Detailed explanations of the above categories can be found in 3GPP TR 21.900.</p>		<p>Use <u>one</u> of the following releases:</p> <ul style="list-style-type: none"> 2 (GSM Phase 2) R96 (Release 1996) R97 (Release 1997) R98 (Release 1998) R99 (Release 1999) Rel-4 (Release 4) Rel-5 (Release 5) Rel-6 (Release 6)

Reason for change:	<p># The unsuccessful outcome is not defined for the Write function of Write-Replace procedure as in TS23.041 to the opposite of the Replace function which is defined in line with TS23.041.</p> <p>The failure of the Write or the Replace function in one or several Service Area(s) does not lead to termination of the Write-Replace procedure but only to an entry in the Failure List IE of the Write Replace Failure message for the impacted SAI(s).</p>
Summary of change:	<p># The unsuccessful outcome is specified for the Write case of Write-Replace procedure in line with TS23.041. Unclarity is removed for the termination of the procedure.</p> <p><u>Impact assessment towards the previous version of the specification (same release):</u></p> <p>This CR has isolated impact towards the previous version of the specification (same release).</p> <p>This CR has an impact under functional and protocol point of view.</p> <p>The impact can be considered isolated because it only affects the Write and the Replace function of the protocol SABP.</p>

Consequences if not approved: ⌘ Inter-working problems between CBC and RNC.

Clauses affected: ⌘ 8.2.3

Other specs affected:	⌘	Y	N	Other core specifications	⌘ TS 25.419 REL-4 CR107	
		X				Test specifications
			X			O&M Specifications

Other comments: ⌘

How to create CRs using this form:

Comprehensive information and tips about how to create CRs can be found at <http://www.3gpp.org/specs/CR.htm>. Below is a brief summary:

- 1) Fill out the above form. The symbols above marked ⌘ contain pop-up help information about the field that they are closest to.
- 2) Obtain the latest version for the release of the specification to which the change is proposed. Use the MS Word "revision marks" feature (also known as "track changes") when making the changes. All 3GPP specifications can be downloaded from the 3GPP server under <ftp://ftp.3gpp.org/specs/> For the latest version, look for the directory name with the latest date e.g. 2001-03 contains the specifications resulting from the March 2001 TSG meetings.
- 3) With "track changes" disabled, paste the entire CR form (use CTRL-A to select it) into the specification just in front of the clause containing the first piece of changed text. Delete those parts of the specification which are not relevant to the change request.

8.2.3 Unsuccessful Operation

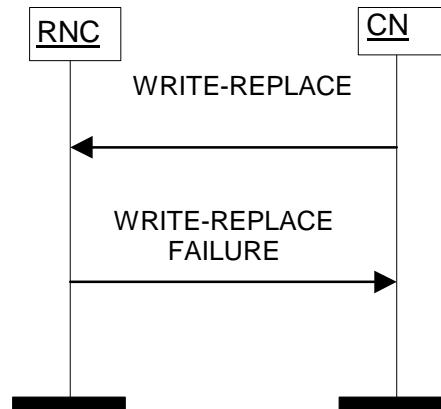


Figure 2: Write-Replace Procedure: Un-Successful Operation

If there is at least one Service Area specified in the WRITE-REPLACE message for which the RNC cannot allocate all the resources requested or for which the RNC cannot complete as requested, ~~for the Service Area(s) specified in the WRITE-REPLACE message~~, then the RNC shall return a WRITE-REPLACE FAILURE message to the CN as an outcome of the procedure. A list of Service Area(s) where the requested resources are unavailable or for which the RNC cannot complete as requested and appropriate cause value shall be provided in this WRITE-REPLACE FAILURE message in the *Failure List* IE.

This WRITE-REPLACE FAILURE message may also include those Service Area(s) where the requested resources were available and shall indicate in the *Number of Broadcasts Completed* List IE those Service Area(s) which completed the request successfully.

If the WRITE-REPLACE message sent from the CN:

- ~~—~~ contained a *New Serial Number* IE but not an *Old Serial Number* IE, the *Number of Broadcasts* IE within the *Number of Broadcasts Completed* List IE is set to '0' for each included Service Area in the corresponding WRITE-REPLACE FAILURE message.
- Contained a *New Serial Number* IE but not an *Old Serial Number* IE, and the *New Serial Number* IE is already used by the RNC, it shall consider the Write Replace procedure as failed for this Service Area and return a WRITE-REPLACE-FAILURE message with the Service Area Identifier of this particular Service Area included in the *Failure List* IE together with the cause value "Message-reference already-used".
- contained both the *New Serial Number* IE and the *Old Serial Number* IE, an entry is made in *Number of Broadcasts* IE in the *Number of Broadcasts Completed* List IE for each included Service Area in the corresponding WRITE-REPLACE FAILURE message.
- contained both the *New Serial Number* IE and the *Old Serial Number* IE, but if the *Old Serial Number* IE is unknown to the RNC (i.e. it can not execute the kill request) for a particular Service Area, it shall ~~terminate~~ consider the Write Replace procedure as failed for this Service Area. When the procedure is completed, the RNC and shall return a WRITE-REPLACE-FAILURE message which includes with the Service Area Identifier of this particular Service Area in the Failure List IE together with the appropriate cause value "Valid-CN-message-not-identified".