

TSG-RAN meeting #4
Miami, 17-18 June 1999

TSGRP#4(99)341

Agenda Item:

Source: WG3

Title: UMTS 25.413: UTRAN Iu Interface RANAP Signalling

Document for:

Note: Revision marks reflect the changes made based on decisions in WG3 meeting #4 in Warwick. These changes have not yet been approved in WG3.

3GPP

TS 25.413 V1.0.24 (1999-04)

Technical Specification

**3rd Generation Partnership Project (3GPP);
Technical Specification Group (TSG) RAN
UTRAN Iu Interface RANAP Signalling**

[UMTS 25.413]

3GPP



Reference

<Workitem> (<Shortfilename>.PDF)

Keywords

<keyword[, keyword]>

3GPP

Postal address

Office address

Internet

secretariat@3gpp.org

Individual copies of this deliverable
can be downloaded from

<http://www.3gpp.org>

Copyright Notification

No part may be reproduced except as authorized by written permission.
The copyright and the foregoing restriction extend to reproduction in all media.

©
All rights reserved.

Contents

Intellectual Property Rights	8
Foreword	8
1 Scope	8
2 References	8
3 Definitions, symbols and abbreviations	8
3.1 Definitions	8
3.2 Symbols	9
3.3 Abbreviations	9
4 General	9
5 RANAP Services	9
6 Services expected from signalling transport	10
7 Functions of RANAP	10
8 RANAP procedures	10
8.1 Relocation	10
8.1.1 General	10
8.1.2 Relocation Preparation	10
8.1.2.1 Successful operation	10
8.1.3 Relocation resource allocation	12
8.1.4 Relocation Detect	14
8.1.5 Relocation Complete	14
8.1.6 Source RNC synchronisation	15
8.1.7 Target RNC synchronisation	15
8.2 Radio Access Bearer Assignment	15
8.3 Iu Release	23
8.3.1 Iu Release due to completion of transaction between UE and CN	23
8.3.2 Iu Release due to UTRAN generated reasons	24
8.3.3 Iu Release due successful handover or SRNS relocation	25
8.4 Overload Control	25
8.4.1 Philosophy	25
8.4.2 Overload at the CN	26
8.4.3 Overload at the UTRAN	26
8.4.4 Message throughput congestion	27
8.5 Reset	27
8.5.1 Reset at the UTRAN	27
8.5.2 Reset at the CN	27
8.5.3 Abnormal Conditions	28
8.5.3.1 Abnormal Condition at the UTRAN	28
8.5.3.2 Abnormal Condition at the CN	28
8.5.3.3 Crossing of Reset messages	28
8.6 Common Id	28
8.7 Paging	29
8.8 Trace Invocation	29
8.9 Cipher Mode Control	30
8.9.1 Successful operation	30
8.9.2 Abnormal conditions	31
8.10 CN Information Broadcast	31
8.11 Direct Transfer	32
8.12 Initial UE Message	32
8.13 Location Reporting Control	33
8.13.1 Normal operation	33
8.13.2 Abnormal conditions	33

8.13.2.1	Abnormal conditions in RNC	33
8.14	Location Report	34
8.14.1	Successful operation	34
8.14.2	Unsuccessful operation	34
8.14.3	Abnormal conditions	34
8.14.3.1	Abnormal conditions in CN	34
8.15	Error Indication	34
8.15.1	CN originated Error Indication	34
8.15.2	RNC originated Error Indication	35
9	Elements for RANAP communication	35
9.1	Message functional definition and content	35
9.1.1	Message Contents	36
9.1.1.1	RADIO ACCESS BEARER ASSIGNMENT REQUEST	36
9.1.1.2	RADIO ACCESS BEARER ASSIGNMENT RESPONSE	37
9.1.1.3	RADIO ACCESS BEARER ASSIGNMENT FAILURE	37
9.1.1.4	RADIO ACCESS BEARER RELEASE REQUEST	40
9.1.1.5	COMMON ID	40
9.1.1.6	DIRECT TRANSFER	40
9.1.1.7	INITIAL UE MESSAGE	41
9.1.1.8	LOCATION REQUEST	41
9.1.1.9	LOCATION REPORT	41
9.1.1.10	CIPHER MODE COMMAND	41
9.1.1.11	CIPHER MODE COMPLETE	42
9.1.1.12	CIPHER MODE REJECT	42
9.1.1.13	PAGING	42
9.1.1.14	IU RELEASE COMMAND	42
9.1.1.15	IU RELEASE COMPLETE	43
9.1.1.16	RELOCATION REQUIRED	43
9.1.1.17	RELOCATION REQUEST	43
9.1.1.18	RELOCATION REQUEST ACKNOWLEDGE	44
9.1.1.19	RELOCATION COMMAND	44
9.1.1.20	RELOCATION DETECT	44
9.1.1.21	RELOCATION COMPLETE	44
9.1.1.22	RELOCATION FAILURE	44
9.1.1.23	RESET	45
9.1.1.24	RESET ACKNOWLEDGE	45
9.1.1.25	CONFUSION	45
9.1.1.26	ERROR INDICATION	45
9.2	Information element functional definition and contents	45
9.2.1	RANAP coding standard	46
9.2.2	Signaling Element Coding	47
9.2.2.1	Message Type	49
9.2.2.2	Message Compatibility Information	50
9.2.2.3	Parameter Compatibility Information	50
9.2.2.4	Call ID	51
9.2.2.5	Bearer ID	51
9.2.2.6	User Information Rate	51
9.2.2.7	Information Transfer Capability	51
9.2.2.8	ATM Address	51
9.2.2.9	ATM Binding ID	51
9.2.2.10	Cause	51
9.2.2.11	RR Cause	52
9.2.2.12	MS Classmark for RAN	53
9.2.2.13	Direct transfer Information	53
9.2.2.14	Layer 3 Information	53
9.2.2.15	IMUI	54
9.2.2.16	TMUI	54
9.2.2.17	Cipher Information	54
9.2.2.18	Cell Identifier List	55
9.2.2.19	Cell Identifier	55

9.2.2.20	Chosen Channel	55
9.2.2.21	Cipher Response Mode	55
9.2.2.22	Chosen Cipher Algorithm	56
9.2.2.23	Group Call Reference	56
9.2.2.24	Talker Flag	56
9.2.2.25	Layer 3 Radio Information	56
9.2.2.26	Response Request	56
9.3	Message and Information element abstract syntax (with ASN.1)	57
9.4	Message transfer syntax	57
9.5	Timers	57
10	Handling of unknown, unforeseen and erroneous protocol data	57
11	Annex A (normative):	57
12	History	57
Intellectual Property Rights		6
Foreword		6
1	Scope	6
2	References	6
3	Definitions, symbols and abbreviations	6
3.1	Definitions	6
3.2	Symbols	7
3.3	Abbreviations	7
4	General	7
5	RANAP Services	7
6	Services expected from signalling transport	7
7	Functions of RANAP	7
8	RANAP procedures	7
8.1	Serving RNS relocation	7
8.2	Inter RNS hard handover	9
8.3	Radio Access Bearer Assignment	12
8.4	Iu Release	20
8.4.1	Iu Release due to completion of transaction between UE and CN	21
8.4.2	Iu Release due to UTRAN generated reasons	21
8.4.3	Iu Release due successful handover or SRNS relocation	22
8.5	Overload Control	22
8.5.1	Philosophy	22
8.5.2	Overload at the CN	23
8.5.3	Overload at the UTRAN	23
8.5.4	Message throughput congestion	24
8.6	Reset	24
8.6.1	Reset at the UTRAN	24
8.6.2	Reset at the CN	24
8.6.3	Abnormal Conditions	25
8.6.3.1	Abnormal Condition at the UTRAN	25
8.6.3.2	Abnormal Condition at the CN	25
8.6.3.3	Crossing of Reset messages	25
8.7	Common Id	25
8.8	Paging	26
8.9	Trace Invocation	26
8.10	Cipher Mode Control	27
8.10.1	Successful operation	27
8.10.2	Abnormal conditions	28
8.11	CN Information Broadcast	28

8.12	Direct Transfer	29
8.13	Initial UE Message	29
9	Elements for RANAP communication	30
9.1	Message functional definition and content	30
9.1.1	Message Contents	31
9.1.1.1	RADIO ACCESS BEARER SETUP (FFS)	31
9.1.1.2	RADIO ACCESS BEARER SETUP RESPONSE (FFS)	31
9.1.1.3	RADIO ACCESS BEARER SETUP FAILURE (FFS)	32
9.1.1.4	RADIO ACCESS BEARER RECONFIGURATION (FFS)	32
9.1.1.5	RADIO ACCESS BEARER RECONFIGURATION RESPONSE (FFS)	32
9.1.1.6	RADIO ACCESS BEARER RECONFIGURATION FAILURE (FFS)	33
9.1.1.7	RADIO ACCESS BEARER RELEASE (FFS)	33
9.1.1.8	RADIO ACCESS BEARER RELEASE RESPONSE (FFS)	33
9.1.1.9	RADIO ACCESS BEARER RELEASE REQUEST	33
9.1.1.10	COMMON ID	34
9.1.1.11	DIRECT TRANSFER	34
9.1.1.12	INITIAL UE MESSAGE	34
9.1.1.13	CIPHER MODE COMMAND	35
9.1.1.14	CIPHER MODE COMPLETE	35
9.1.1.15	CIPHER MODE REJECT	35
9.1.1.16	PAGING	35
9.1.1.17	IU RELEASE COMMAND	36
9.1.1.18	IU RELEASE COMPLETE	36
9.1.1.19	RELOCATION REQUIRED	36
9.1.1.20	RELOCATION REQUEST	36
9.1.1.21	RELOCATION COMPLETE	37
9.1.1.22	RNC RELOCATION FAILURE	37
9.1.1.23	HANDOVER REQUIRED	37
9.1.1.24	HANDOVER REQUEST	38
9.1.1.25	HANDOVER REQUEST ACKNOWLEDGE	38
9.1.1.26	HANDOVER COMMAND	39
9.1.1.27	HANDOVER DETECT	39
9.1.1.28	HANDOVER COMPLETE	39
9.1.1.29	HANDOVER FAILURE	39
9.1.1.30	RESET	40
9.1.1.31	RESET ACKNOWLEDGE	40
9.1.1.32	CONFUSION	40
9.2	Message format and information element coding	40
9.2.1	RANAP coding standard	40
9.2.2	Signaling Element Coding	42
9.2.2.1	Message Type	44
9.2.2.2	Message Compatibility Information	45
9.2.2.3	Parameter Compatibility Information	45
9.2.2.4	Call ID	46
9.2.2.5	Bearer ID	46
9.2.2.6	User Information Rate	46
9.2.2.7	Information Transfer Capability	46
9.2.2.8	ATM Address	46
9.2.2.9	ATM Binding ID	46
9.2.2.10	Cause	46
9.2.2.11	RR Cause	47
9.2.2.12	MS Classmark for RAN	48
9.2.2.13	Direct transfer Information	48
9.2.2.14	Layer 3 Information	48
9.2.2.15	IMUI	49
9.2.2.16	TMUI	49
9.2.2.17	Cipher Information	49
9.2.2.18	Cell Identifier List	50
9.2.2.19	Cell Identifier	50
9.2.2.20	Chosen Channel	50

9.2.2.21	Cipher Response Mode.....	50
9.2.2.22	Chosen Cipher Algorithm.....	51
9.2.2.23	Group Call Reference.....	51
9.2.2.24	Talker Flag.....	51
9.2.2.25	Layer 3 Radio Information.....	51
9.2.2.26	Response Request.....	51
9.3	Timers.....	52
10	Handling of unknown, unforeseen and erroneous protocol data.....	52
11	Annex A (normative):.....	52
12	History.....	52

Intellectual Property Rights

Foreword

This Technical Specification has been produced by the 3rd Generation Partnership Project, Technical Specification Group <TSG name>.

The contents of this TS may be subject to continuing work within the 3GPP and may change following formal TSG approval. Should the TSG modify the contents of this TS, it will be re-released with an identifying change of release date and an increase in version number as follows:

Version m.t.e

where:

- m indicates [major version number]
- x the second digit is incremented for all changes of substance, i.e. technical enhancements, corrections, updates, etc.
- y the third digit is incremented when editorial only changes have been incorporated into the specification.

4 Scope

The present document ...

2 References

The following documents contain provisions which, through reference in this text, constitute provisions of the present document.

- References are either specific (identified by date of publication, edition number, version number, etc.) or non-specific.
- For a specific reference, subsequent revisions do not apply.
- For a non-specific reference, the latest version applies.
- A non-specific reference to an ETS shall also be taken to refer to later versions published as an EN with the same number.

[1] UMTS 25.931, UTRAN Functions, Examples on Signalling Procedures

3 Definitions, symbols and abbreviations

3.1 Definitions

For the purposes of the present document, the [following] terms and definitions [given in ... and the following] apply.

<defined term>: <definition>.

Example: text used to clarify abstract rules by applying them literally.

3.2 Symbols

For the purposes of the present document, the following symbols apply:

<symbol> <Explanation>

3.3 Abbreviations

AAL2	ATM Adaptation Layer type 2
ASN.1	Abstract Syntax Notation One
ATM	Asynchronous Transfer Mode
BID	Binding Identity
CN	Core Network
CRNC	Controlling RNC
CS	Circuit Switched
DRNC	Drift RNC
DRNS	Drift RNS
MSC	Mobile services Switching Center
PDU	Protocol Data Unit
PS	Packet Switched
QoS	Quality of Service
RAB	Radio Access Bearer
RL	Radio Link
RNC	Radio Network Controller
RNS	Radio Network Subsystem
RANAP	Radio Access Network Application Part
SCCP	Signalling Connection Control Part
SGSN	Serving GPRS Support Node
SRNC	Serving RNC
SRNS	Serving RNS
UE	User Equipment
UTRAN	UMTS Terrestrial Radio Access Network

4 General

[Editor's note: This chapter should describe requirements on RANAP forward/backward compatibility, error handling principles, message coding principles etc.]

5 RANAP Services

[Editor's note: This chapter should describe services of RANAP protocol.]

The RANAP offers the following services:

6 Services expected from signalling transport

[Editor's note: This chapter should describe expected services from signalling transport.]

7 Functions of RANAP

[Editor's note: This chapter should describe functions of RANAP protocol.]

8 RANAP procedures

8.1 Relocation

8.1.1 General

Note 1: The impact of handover from GPRS to UMTS on Relocation procedure shall be studied.

Note 2: The reason for initiating the procedure has to be included (an air interface handover or SRNS relocation).

Relocation is used to relocate the serving RNS functionality from one RNS to an other. Procedure may or must not involve change of the radio resources assigned for the corresponding UE. This procedure can be used within one UTRAN if the Iur interface can not (or is not desired to) be used for active set management, between two UTRANs or at UTRAN side in handovers between two Radio Access systems (e.g. UMTS to GSM).

Relocation is carried over Iu interface, by the RANAP protocol.

All RANAP messages concerned with relocation are sent using the connection oriented mode of the [SCCP signalling connection](#).

8.1.2 Relocation ~~required indication~~ Preparation

Successful operation

Procedure is initiated by the Serving RNC by sending a RELOCATION REQUIRED message to active CN nodes. Timer T(RELOCATION COMMAND) is started, upon transmitting the message. RELOCATION REQUIRED message allows a RNC to request that a relocation is to be carried out for a particular UE, having signalling connection via the serving RNC. ~~If a CN node can not realise the relocation a RELOCATION FAILURE message is returned.~~

~~Chapter 9.1.1.21 gives the parameters included in the above message (FFS).~~

~~The signalling flow for relocation required indication is shown in Figure 1.~~

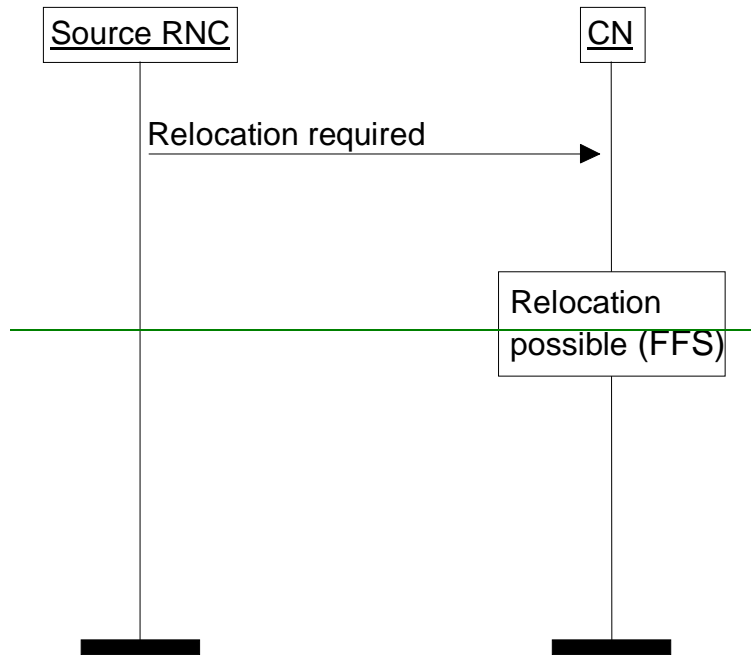


Figure 1. Relocation required indication.

The ~~RELOCATION REQUIRED~~ message shall be updated and repeated by the RNC with a periodicity of T_{xx} until:

- ~~— A RELOCATION COMMAND message is received or;~~
- ~~— A RESET message is received, or;~~
- ~~— The reason for the original RELOCATION REQUIRED message disappears, or;~~
- ~~— All communication is lost with the UE, and the transaction is abandoned, or;~~
- ~~— The transaction ends, i.e. signalling connection to the CN node is released.~~

As a response to the RELOCATION REQUIRED message the CN sends RELOCATION COMMAND to the source RNC.

Upon reception of RELOCATION COMMAND belonging to ongoing procedure the RNC resets the timer T (RELOCATION COMMAND). Depending on the case the source RNC either triggers the handover procedure in the air interface or commits the execution of the relocation in the target system.

The signalling flow between the source RNC and the CN is shown in [Figure 2](#)~~Figure 2~~.

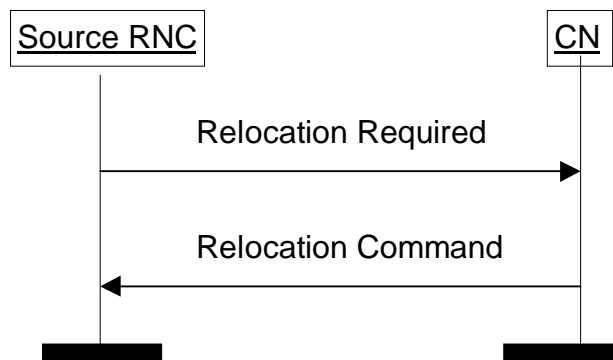


Figure 2. Relocation Preparation procedure between source RNC and CN.

8.1.3 Relocation resource allocation

The CN node sends a RELOCATION REQUEST message to the target RNC (selected by the source RNC and indicated in the RELOCATION REQUIRED message). This message contains details of the resource(s) required like bearer identifier and binding ID of each bearer to be established to the new Iu interface.

~~Chapter 9.1.1.22 gives the parameters included in the above message (FFS).~~

On receipt of this message the target RNC shall check availability of requested resources.

~~If all necessary radio resource(s) are successfully allocated the target RNC sends back to the CN a RELOCATION REQUEST ACKNOWLEDGE message. available then necessary user plane links will be established over the Iu interface. RELOCATION REQUEST ACKNOWLEDGE message is transmitted to the CN node, when the target RNC has received and processed RELOCATION REQUEST messages from all active CN nodes.~~

~~Chapter 9.1.1.23 gives the parameters included in the above message (FFS).~~

The RELOCATION REQUEST ACKNOWLEDGE message sent by the target RNC may optionally contain a transparent field, which is transferred by the CN node to the source RNC using the RANAP message RELOCATION COMMAND.

To ensure the necessary load sharing on the Iu-PS interface,

- When the CN sends RELOCATION REQUEST for all Radio Access Bearers (associated with PDP contexts) of an UE, the CN specifies the IP address of the packet processing function allocated to this / each of these PDP context(s) in the CN.
- In the response to the CN request, i.e. in RELOCATION REQUEST ACKNOWLEDGE, the RNC specifies the IP address of the packet processing function allocated to this / each of these Radio Access Bearer(s) in the RNC.

Fig. 37 shows the signalling flow for Relocation resource allocation.

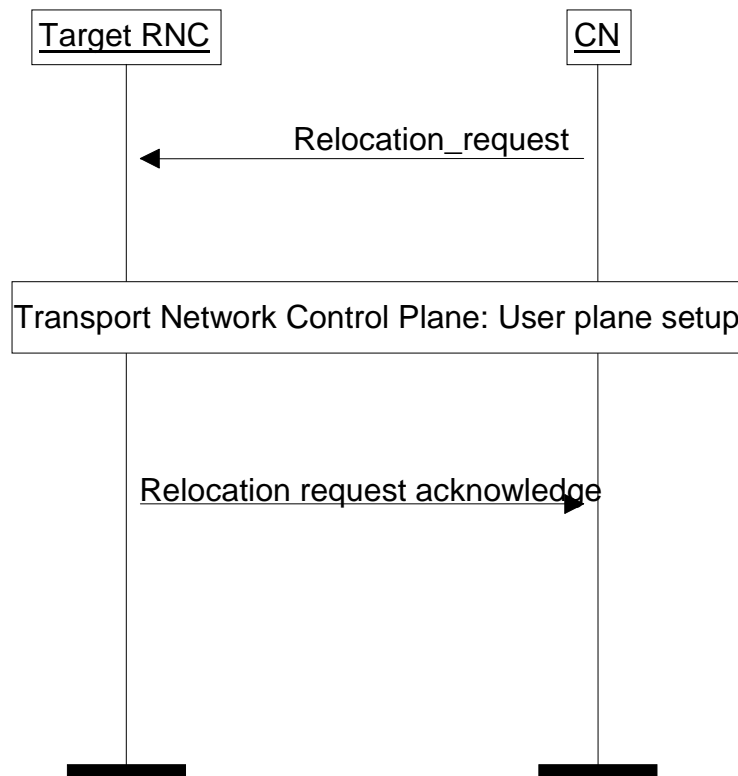


Figure 432. Resource allocation for relocation.

8.1.5 Relocation Detect

When the relocation execution trigger is received, the target RNC sends a RELOCATION DETECT message to the active CN nodes and start to act as an SRNC.

~~Note. It is FFS, whether the RELOCATION DETECT message is mandatory or optional.~~

The signalling flow for Relocation detect procedure is shown in ~~Figure 6~~ ~~Figure 5~~ ~~Figure 4~~.

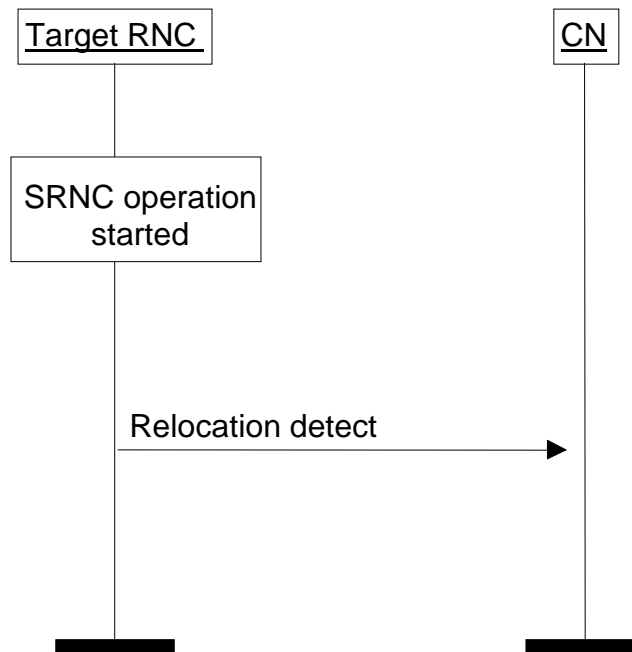


Figure 654. Relocation Detect procedure.

8.1.6 Relocation Complete

When the UE is successfully in communication with the target RNC, i.e. the new UTRAN identifiers are successfully exchanged with the UE, then the target RNC shall send a RANAP message RELOCATION COMPLETE to the CN nodes and terminate the procedure.

The signalling flow for Relocation complete procedure is illustrated in ~~Figure 8~~ ~~Figure 6~~ ~~Figure 5~~.

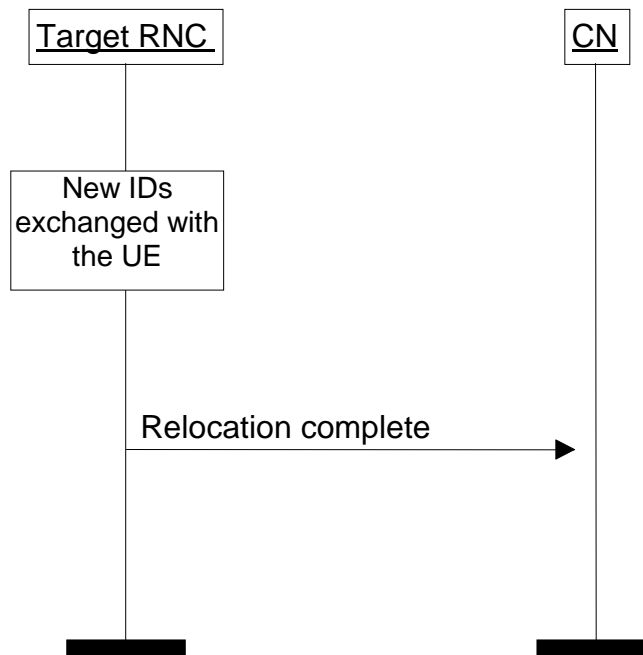


Figure 865. Relocation Complete procedure.

The CN elements shall will then release all resources bearers (Fig. 5), as described in section 8.3, towards associated to the old serving Source RNS.

To ensure the necessary load sharing on the Iu-PS interface,

- When the CN sends RELOCATION REQUEST for all Radio Access Bearers (associated with PDP contexts) of an UE, the CN specifies the IP address of the packet processing function allocated to this / each of these PDP context(s) in the CN.
- In the response to the CN request, i.e. in RELOCATION REQUEST ACKNOWLEDGE, the RNC specifies the IP address of the packet processing function allocated to this / each of these Radio Access Bearer(s) in the RNC.

Source RNC synchronisation

[Editor's note: Text to be added.]

Target RNC synchronisation

[Editor's note: Text to be added.]

8.2 Radio Access Bearer Assignment

[Editor's note: TTC/ARIB has split the RAB Assignment procedure to separate Bearer setup, release and reconfiguration procedures. ETSI is using one procedure handling all of these. TTC/ARIB Bearer setup, release and reconfiguration procedures are presented after ETSI RAB Assignment procedure for comparison. A new study item is opened.]

Study item Iu-5: The use of a single RAB assignment procedure versus separate bearer setup, release and reconfiguration procedures. Study item Iu/5 has been solved. The combined Radio Access Bearer Assignment procedure will be used.

[Editor's note: ETSI RAB Assignment procedure is presented first.]

This procedure is triggered from the CN side and is used to modifying the list of bearers established between the requesting CN element and a given MS for which a RRC connection exists with the requesting CN element prior the running of the procedure.

The procedure is started by the CN sending a RANAP RADIO ACCESS BEARER ASSIGNMENT REQUEST message. Such a message contains the information needed for the UTRAN to decide the new bearer configuration to build. This comprises :

- The list of the bearers to establish if possible, with their description and a identity;
- Bearer linking, building group of bearers which must be either all established, or all rejected ;
- ~~The list of the identities of the bearers to keep if possible, with possibly a description when it is changed ;~~
- The list of the identities of the bearers to release ;

Each list may be empty. The bearers are only those related to RRC connection, i.e., used between the concerned MS and the requesting CN element. This excludes bearers set with other MS or with other CN elements.

For each bearer to establish, the following information is provided :

- An identity (bearer identity), used for eventual reference ;
- The characteristics of the MS-CN bearer, including such aspects as data rates, transmission quality of service, ... Some of them may include negotiable values.
- Priority level and pre-emption indication ;
- Possibly a bit string to be passed to the upper layer on the UE side together with the bearer establishment indication.
- Binding Id used for associating the bearer identity and the corresponding User plane. The details of using the Binding Id are FFS.

~~For each bearer to keep if possible, none, part or all of the following information may be provided in addition to the bearer identity :~~

- ~~The characteristics of the MS-CN bearer, including such aspects as data rates, transmission quality of service, ...~~
- ~~Priority level and pre-emption indication.~~

For each bearer to be released, only the bearer identity is provided. If a radio channel release is required because of a UTRAN generated reason (e.g. "O and M intervention", "equipment failure", or if transmission from the UE is lost) then, the RNC shall generate a RADIO ACCESS BEARER RELEASE REQUEST message towards the CN. This message shall include a Cause Information Element, indicating the reason for the failure. On receipt of a RADIO ACCESS BEARER RELEASE REQUEST the CN shall initiate the release, as defined above, by sending a RANAP RADIO ACCESS BEARER ASSIGNMENT REQUEST message. On receipt of this message the UTRAN shall, if the resources are not already internally released, release the resources in the normal way. The procedure is always terminated with a RANAP RADIO ACCESS BEARER ASSIGNMENT COMPLETE to the CN. This procedure handles both pre-configured and by-demand connections. The signalling flow for this procedure has been illustrated in [Figure 10](#)~~Figure 7~~~~Figure 6~~.

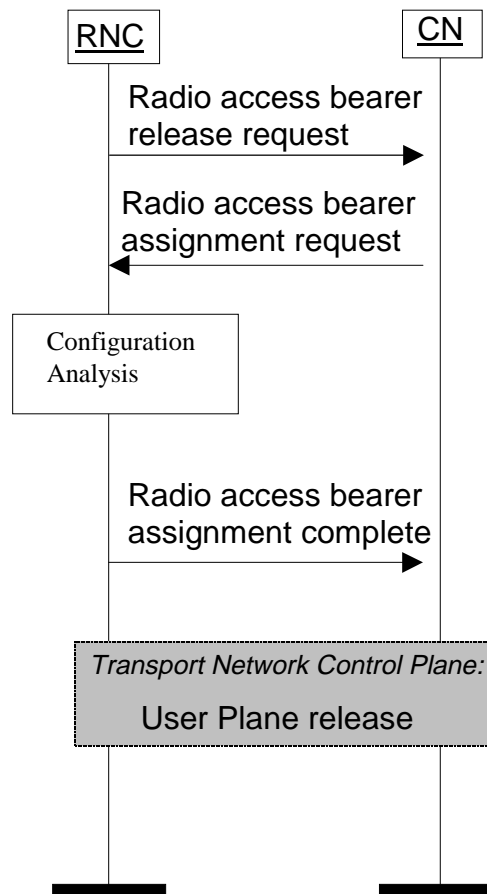


Figure 1076. Radio Access Bearer Assignment procedure, UTRAN generated release.

On the basis of the information provided, of the MS capabilities, of the information pertaining to all bearers already established with the MS (in particular the priority level and pre-emption indication), the UTRAN decides on the new MS-UTRAN bearer configuration, and starts the AN-MS procedures to set this configuration, and, when applicable, the procedures to establish and release local AN-CN bearers. The algorithm applied to reach the decision is outside the scope of this protocol specification.

The UTRAN shall report to the different CN elements the changes of configuration when effective, or when put in queue. This can be done in one or several messages, depending on the case, and on UTRAN choices.

A RANAP RADIO ACCESS BEARER ASSIGNMENT COMPLETE message is sent to the requesting CN element when the whole request has been dealt with effectively. Such a message contains part or whole of the following information :

- The list of the bearer identities for the bearer successfully established or modified, if not already indicated ; with each bearer identity is provided the negotiable parameters as chosen by the UTRAN and the Binding Id used for associating the bearer identity and the corresponding User plane. The details of using the Binding Id are FFS.
- The list of the bearers which have been released, with for each a cause, if not already indicated.
- Localisation data, when the AN got more information on where is the MS while running the procedure.

The sending and the reception of this message ends the procedure between the UTRAN and the requesting CN element.

To ensure the necessary load sharing on the Iu-PS interface,

- When the CN sends RAB ASSIGNMENT REQUEST for all Radio Access Bearers (associated with PDP contexts) of an UE, the CN specifies the IP address of the packet processing function allocated to this / each of these PDP context(s) in the CN.

- In the response to the CN request, i.e. in RAB ASSIGNMENT COMPLETE, the RNC specifies the IP address of the packet processing function allocated to this / each of these Radio Access Bearer(s) in the RNC.

When at least one requested bearer has not been established, a RANAP RADIO ACCESS BEARER ASSIGNMENT FAILURE message is sent instead.

Such a message contains part or whole of the following information :

- The list of the bearer identities for the bearer successfully established or modified, if not already indicated ; with each bearer identity is provided the negotiable parameters as chosen by the UTRAN.
- The list of the bearers which has not been, and will not be, established, with for each a cause ;
- The list of the bearers which have been released, with for each a cause, if not already indicated.
- Localisation data, when the AN got more information on where is the MS while running the procedure.

A RANAP QUEUING INDICATION message can be sent to the requesting CN element prior to the RANAP RADIO ACCESS BEARER ASSIGNMENT COMPLETE or RANAP RADIO ACCESS BEARER ASSIGNMENT FAILURE message to indicate that only part of the request has been fulfilled, and that the rest has been in queue. This message contains the same kind of information as the RANAP RADIO ACCESS BEARER ASSIGNMENT COMPLETE message.

A RANAP BEARER CLEARED INDICATION message shall be sent to a CN element to indicate a bearer, or bearers, previously established between this element and the MS and which have been released that due to pre-emption.

The signalling flow for the Radio access bearer assignment procedure has been illustrated in [Figure 12](#)~~Figure 8~~~~Figure 7~~.

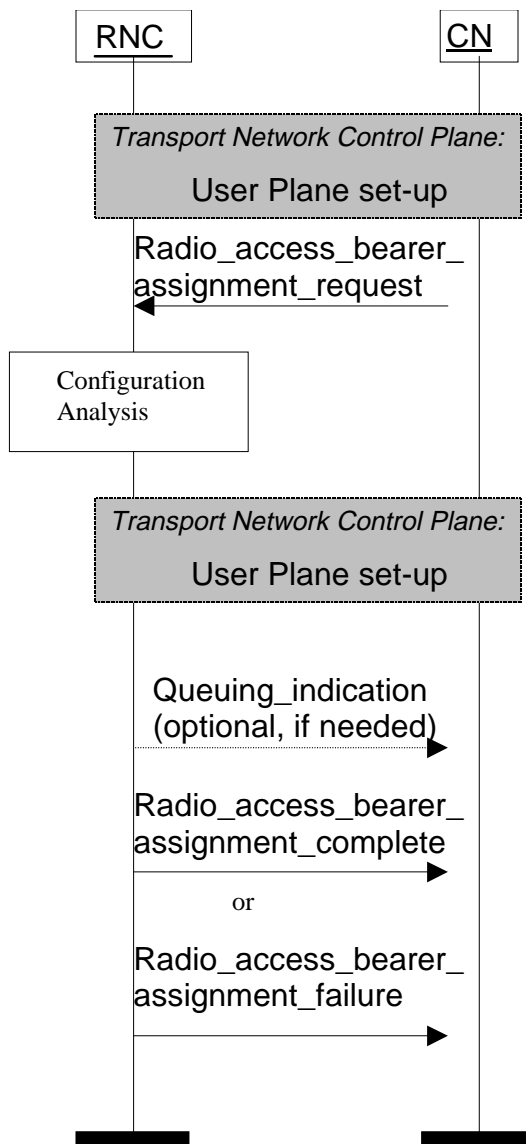


Figure 1287. Radio Access Bearer Assignment procedure.

[Editor's note: Radio Access Bearer setup, release and reconfiguration procedures of TTC/ARIB are included here for comparison. (Study item 5).]

8.3 Radio Access Bearer Setup

This procedure is triggered from the CN side and is used to establish a new bearer between the requesting CN element and a given UE

The procedure is started by the CN sending a RADIO ACCESS BEARER SETUP message. Such a message contains the information needed for the UTRAN to decide the new bearer configuration to build.

For the radio access bearer to establish, the following information is provided:

- An identity (bearer identity), used for eventual reference ;
- The characteristics of the UE-CN bearer, including such aspects as data rates, transmission quality of service, ... Some of them may include negotiable values.
- Binding Id used for associating the bearer identity and the corresponding User plane. The details of using the Binding Id are FFS.

A RADIO ACCESS BEARER SETUP RESPONSE message is sent to the requesting CN element when the whole request has been dealt with effectively.

The sending and the reception of a RADIO ACCESS BEARER SETUP RESPONSE message end the procedure between the UTRAN and the requesting CN element.

When the requested bearer has not been established, a RADIO ACCESS BEARER SETUP FAILURE message is sent instead.

The signalling flow for the Radio Access Bearer setup procedure has been illustrated in Figure 4.

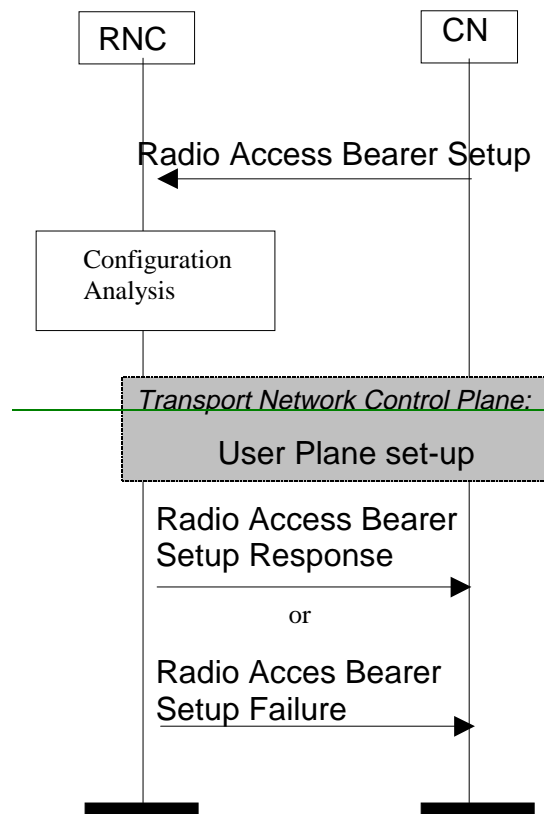


Figure 4. Radio Access Bearer Setup procedure.

8.4 Radio Access Bearer Release (FFS, Study item 5)

8.4.1 Release due to Transaction Completion

This procedure used for the release of assigned radio resources at the end of a transaction

Release negotiation will take place directly between the UE and CN using transparent messages via the DIRECT TRANSFER in the RANAP. The CN then send a RADIO ACCESS BEARER RELEASE, indicating that the radio resource(s) should be released. After the RADIO ACCESS BEARER RELEASE has been sent, the CN shall not send further RANAP connection-oriented messages on this particular connection, except RADIO ACCESS BEARER RELEASE.

When the RNC receives the RADIO ACCESS BEARER RELEASE, it marks the related resources as idle and return RADIO ACCESS BEARER RELEASE RESPONSE. (the RNC need not wait for the radio channel release to be completed.)

On receipt of RADIO ACCESS BEARER RELEASE RESPONSE, the CN releases the related resources.

The signaling flow for this procedure has been illustrated in Figure 5.

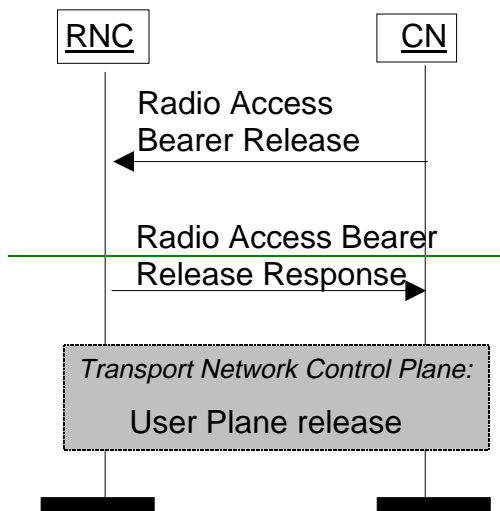


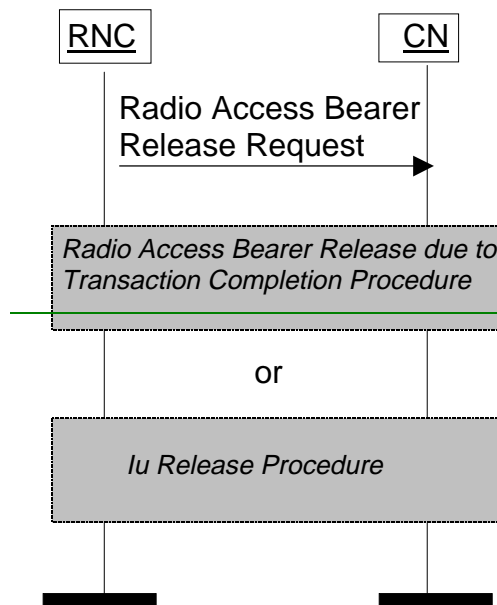
Figure 5. Radio Access Bearer Release procedure

8.4.2 Release due to UTRAN Generated Reason

If a radio channel release is required because of a UTRAN-generated reason (e.g. “O and M intervention”, “equipment failure”, or if transmission from the UE is lost) then, the RNC shall generate a RADIO ACCESS BEARER RELEASE REQUEST message towards the CN. This message shall include a Cause Information Element, indicating the reason for the failure. On receipt of a RADIO ACCESS BEARER RELEASE REQUEST the CN shall initiate the “Radio Access Bearer Release due to Transaction Completion Procedure (describes in chapter .xx)” or “Iu Release Procedure (describes in chapter .xx)”, as defined above, by sending a RADIO ACCESS BEARER RELEASE message or indicate release of the Iu Interface by sending a IU RELEASE message.

On receipt of a RADIO ACCESS BEARER RELEASE message or IU RELEASE message the UTRAN shall, if the resources are not already internally released, release the resources in the normal way. The procedure is always terminated with a RADIO ACCESS BEARER RELEASE RESPONSE or IU RELEASE RESPONSE to the CN.

The signaling flow for this procedure has been illustrated in Figure 6.



~~Figure 6. Radio Access Bearer Release procedure, UTRAN generated release~~

~~8.5 Radio Access Bearer Reconfiguration (FFS, Study item 5)~~

~~This procedure is triggered from the CN and is used to modify the radio access bearer characteristic e.g. data rate, quality of service.~~

~~The CN sends a RADIO ACCESS BEARER RECONFIGURATION message to request modification of the bearer. This message contents:~~

- ~~• An identity (bearer identity)~~
- ~~• The characteristics of the UE-CN bearer, including such aspects as data rates, transmission quality of service.~~

~~When the UTRAN received this message, it analysis the related bearer and start to reconfiguration of bearer between the UE and the UTRAN. If the procedure is confirmed, the UTRAN send a RADIO ACCESS BEARER RECONFIGURATION RESPONSE message. If the procedure is failure, the UTRAN send a RADIO ACCESS BEARER RECONFIGURATION FAILURE message.~~

~~The signalling flow for the Radio Access Bearer Reconfiguration procedure has been illustrated in Figure 7.~~

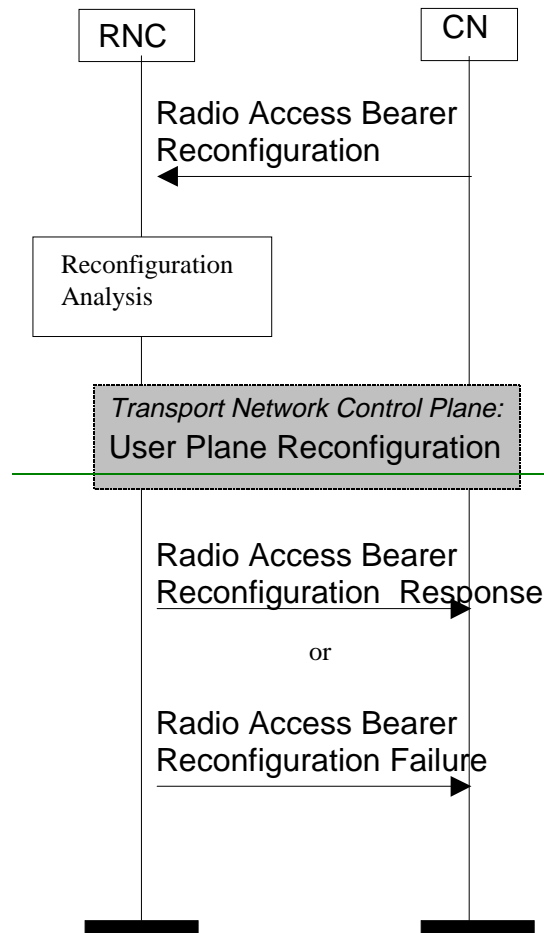


Figure 7. Radio Access Bearer Reconfiguration procedure.

[Editor's note: Description of TTC/ARIB's setup, release and reconfiguration procedures ends, return back to common text.]

8.3 Iu Release

The CN uses the IU RELEASE COMMAND message to release all resources in the SRNS related to this Iu connection.

The Iu Release procedure can be initiated for the following reasons:

- Completion of transaction between UE and CN
- UTRAN generated reasons
- Completion of successful handover or SRNS relocation

The Iu Release procedure messages i.e. Iu RELEASE REQUEST, Iu RELEASE COMMAND, Iu RELEASE COMPLETE are sent as connection oriented messages over the appropriate Iu connection.

8.3.1 Iu Release due to completion of transaction between UE and CN

The release of assigned radio bearers at the end of a transaction will take place as follows:

Release negotiation will take place directly between the UE and CN using transparent messages via UTRAN. The CN will then send an Iu RELEASE COMMAND, indicating that the radio bearers(s) and Iu resources should be released. After the Iu RELEASE COMMAND has been sent, the CN shall not send further RANAP connection oriented messages on this particular connection, except Iu RELEASE COMMAND.

The Iu RELEASE COMMAND message shall include a Cause Information Element, indicating the reason for the release.

The RNS at the opposite access point shall initiate the release of the user plane resources allocated to the connection, if any.

When the RNS receives the Iu RELEASE COMMAND:

- 1) The clearing on the radio interface initiated
- 2) The RNS returns an Iu RELEASE COMPLETE message to the CN originating the Iu RELEASE COMMAND message and takes action to return any assigned user plane resources to idle. (The RNC need not wait for the radio channel release to be completed before returning the Iu RELEASE COMPLETE message.)

The signalling flow for Iu Release procedure due to completion of transaction between UE and CN is shown in [Figure 14](#)~~Figure 9~~~~Figure 8~~:

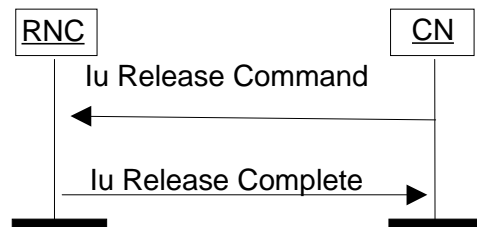


Figure 14. Iu Release: Completion of transaction between UE and CN.

8.3.2 Iu Release due to UTRAN generated reasons

If the release of the radio bearers assigned to a particular UE is required because of a UTRAN generated reason (e.g. "O and M intervention", "equipment failure") then, the RNS controlling the Iu connection(s) of that particular UE shall generate an Iu RELEASE REQUEST message towards the CN. If it exists two Iu connections for that particular UE, then an Iu RELEASE REQUEST message shall be sent to CN domain.

If the contact with the UE is lost then an Iu RELEASE REQUEST message shall be sent to the CN node(s) having an Iu connection with the RNS for that particular UE.

The Iu RELEASE REQUEST message shall include a Cause Information Element, indicating the reason for the release.

On receipt of an Iu RELEASE REQUEST message, the CN node shall initiate the release, as defined above, by sending an Iu RELEASE COMMAND message. On receipt of this message the RNS shall, if the resources are not already released, release the resources in the normal way. The procedure is always terminated with an Iu RELEASE COMPLETE to the CN originating the Iu RELEASE COMMAND message.

The signalling flow for Iu Release procedure due to UTRAN generated reasons is shown in [Figure 16](#)~~Figure 10~~~~Figure 9~~:

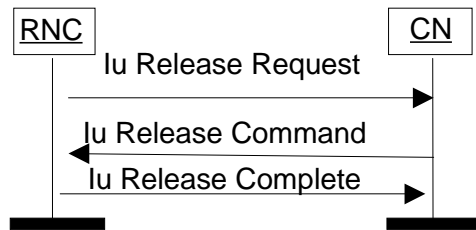


Figure 1610. Iu Release: UTRAN generated reasons.

8.3.3 Iu Release due successful handover or SRNS relocation

In the case of a handover or SRNS relocation being successfully completed, then the resources at the old RNS are released by the CN using the Iu release sequence. The cause value used by the CN in the Iu RELEASE COMMAND message shall be set to the appropriate value: “handover successful” or “SRNS relocation successful”.

When the RNS detects one of these cause values in an Iu RELEASE COMMAND message, then it shall return an Iu RELEASE COMPLETE message to the appropriate CN and take action to return to idle any resources attached to that particular Iu connection.

In the case where there is a second Iu connection for that particular UE, then the RNC shall wait the second Iu RELEASE COMMAND message before returning the remaining resources assigned to that UE to idle. Once the second Iu RELEASE COMMAND is received, the procedure completes normally.

The signalling flow for Iu Release procedure due to completion of transaction between UE and CN is shown in [Figure 18](#) ~~Figure 12~~ ~~Figure 10~~:

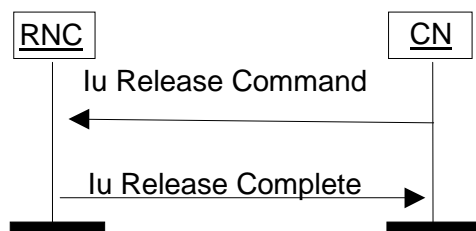


Figure 1810. Iu Release: successful handover or SRNS relocation.

8.4 Overload Control

[Editor's note: TTC/ARIB does not have Overload control procedure. The ETSI procedure is used as a base.]

These procedures are defined to give some degree of flow control. At the UTRAN processor overload and overload in the capability to send signalling messages to the UE are catered for, and at the CN processor overload is catered for.

8.4.1 Philosophy

The philosophy used is to stem the traffic at source with known effect on the service. The algorithm used is:

- On receipt of the first OVERLOAD message or signaling point congested information, the traffic is reduced by one step. At the same time, timers T(igOC)(T(igOR)) and T(inTC)(T(inTR)) are started. During T(igOC)(T(igOR)) all received overload messages or signaling point congested information are ignored in order not to reduce the traffic too rapidly. Reception of an OVERLOAD message or signaling point congested information after expiry of T(igOC)(T(igOR)) but still during T(inTC)(T(inTR)) , will decrease the traffic load by one more step, and restart T(igOC)(T(igOR)) and T(inTC)(T(inTR)).

- This step by step reduction of traffic is continued until maximum reduction is obtained by arriving at the last step. If $T(\text{inTC})(T(\text{inTR}))$ expires (i.e. no OVERLOAD message or signaling point congested information is received during $T(\text{inTC})(T(\text{inTR}))$) the traffic will be increased by one step and $T(\text{inTC})(T(\text{inTR}))$ will be started, unless full load has been resumed.

NOTE: Timers $T(\text{igOC})$ and $T(\text{inTC})$ are running in the CN whilst Timers $T(\text{igOR})$ and $T(\text{inTR})$ are running in the UTRAN.

- The number of steps and the method of reducing the load is considered to be an implementation specific function.

There may be other traffic control mechanisms from O and M activities occurring simultaneously.

8.4.2 Overload at the CN

The CN can indicate to the RNC that it is in a congested state by sending an OVERLOAD message. This is sent as a connectionless global message.

At the UTRAN receipt of this message causes the reduction of traffic to the CN node sending the message using the method described in subclause 9.2.2.4.1.

The signalling flow for Overload at the CN is shown in ~~Figure 20~~ ~~Figure 13~~ ~~Figure 11~~.

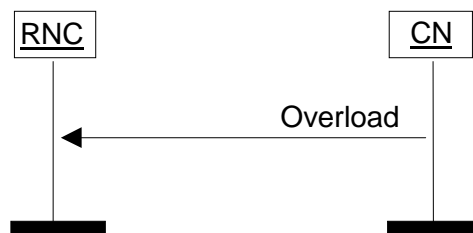


Figure ~~20~~ ~~13~~ ~~11~~. Overload at the CN.

8.4.3 Overload at the UTRAN

If the UTRAN is not capable to send signalling messages to the UE due to overloaded resources then the UTRAN sends an OVERLOAD message to the CN with the appropriate cause (Cause value: “overload in the capability to send signalling messages to the UE”).

If the UTRAN processing is overloaded then the RNC sends an OVERLOAD message with the Cause value: “processor overload”.

The CN originated traffic is reduced in accordance with the method described in subclause 9.2.2.4.1.

The signalling flow for Overload at the UTRAN is shown in ~~Figure 22~~ ~~Figure 14~~ ~~Figure 12~~.



Figure 221412. Overload at the UTRAN.

8.4.4 Message throughput congestion

If the lower layers of the protocol for Radio Network Control Plane Signaling Bearer become congested then it is assumed that the MTP congestion indication will take place and the source of the traffic will receive primitives from the transport protocols resulting in it reducing the generated load.

A suitable method to achieve this reduction could be based on that given in subclause 9.2.2.4.1.

8.5 Reset

The purpose of the reset procedure is to initialise the UTRAN and CN in the event of a failure. The procedure is a global procedure applying to a whole RNC (instead of a particular UE), and therefore all messages relating to the reset procedure are sent as global messages using the connectionless mode of the [SCCP signalling connection](#).

If only a limited part of the CN or UTRAN has suffered a failure then Radio Access Bearer Assignment Request procedures (indicating bearer release) can be used to clear only the affected Radio Access Bearers.

8.5.1 Reset at the UTRAN

In the event of a failure at the UTRAN which has resulted in the loss of transaction reference information, a RESET message is sent to the CN. This message is used by the CN to release affected Radio Access Bearers and erase all affected references.

After a guard period of T(RatR) seconds a RESET ACKNOWLEDGE message is returned to the UTRAN indicating that all references have been cleared.

The signalling flow for Reset at the UTRAN is shown in [Figure 24](#)[Figure 15](#)[Figure 13](#).

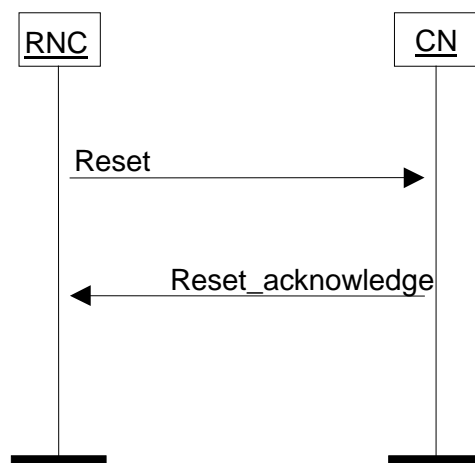


Figure 241513. Reset at the UTRAN.

8.5.2 Reset at the CN

In the event of a failure at the CN which has resulted in the loss of transaction reference information, a RESET message is sent to the RNC. This message is used by the UTRAN to release affected Radio Access Bearers and erase all affected references.

After a guard period of T(RatC) seconds a RESET ACKNOWLEDGE message is returned to the CN, indicating that all Ues which were involved in a call are no longer transmitting and that all references at the UTRAN have been cleared.

[Figure 26](#)[Figure 16](#)[Figure 14](#) shows the signalling flow for Reset at the CN.

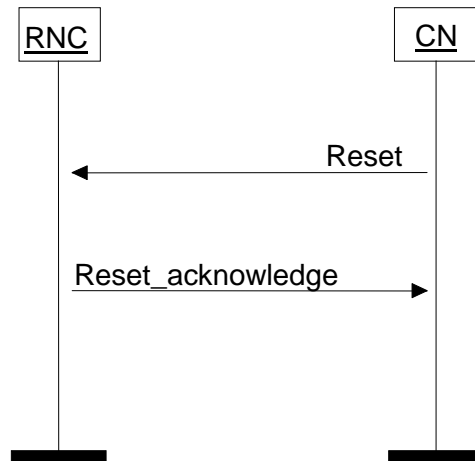


Figure 261614. Reset at the CN.

8.5.3 Abnormal Conditions

8.5.3.1 Abnormal Condition at the UTRAN

If the RNC sends a RESET message to the CN and receives no RESET ACKNOWLEDGE message within a period $T(\text{RafC})$ then it shall repeat the entire reset procedure. The sending of the RESET message is repeated a maximum of “n” times where n is an operator matter. After the n-th unsuccessful repetition the procedure is stopped and the maintenance system is informed.

8.5.3.2 Abnormal Condition at the CN

If the CN sends a RESET message to the RNC and receives no RESET ACKNOWLEDGE message within a period $T(\text{RafR})$ then it shall repeat the entire reset procedure. The sending of the RESET message is repeated a maximum of “n” times where n is an operator matter. After the n-th unsuccessful repetition the procedure is stopped and the maintenance system is informed.

8.5.3.3 Crossing of Reset messages

Actions for the case, when the entity, which has sent a RANAP RESET message and is waiting for a RANAP RESET ACKNOWLEDGE message, but receives a RANAP RESET message are FFS.

8.6 Common Id

This procedure is needed, if the MM concept will require the UTRAN to send a page message on the existing RRC connection.

The purpose of the RANAP Common Id procedure is to allow the RNC to create a reference between the IMSI of a user and the RRC connection of that user. This is achieved by sending the IMSI of a verified user from the CN to the RNC. The RNC is then able to check whether there is already signaling bearer to the UE when a CN starts connection establishment by sending Paging message. The signaling bearer can be already used by an other CN, and if this is the case, the RNC uses it to send the Paging message to the MS.

The CN sends a COMMON ID message after it has ensured the identity of UE. The message contains the IMSI of the user. The RNC associates the permanent identity to the RRC Connection of that user and saves it for the duration of the RRC connection. The signalling flow Common Id procedure is shown in [Figure 28](#)[Figure 17](#)[Figure 15](#).

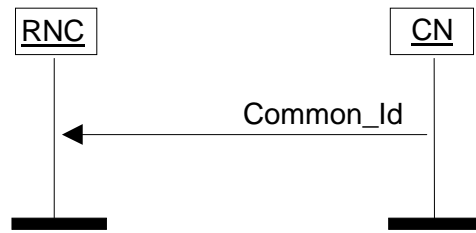


Figure ~~2817~~15. Common Id procedure.

8.7 Paging

PAGING messages for all UEs shall be sent via the RANAP as a connectionless message. These will include some information to allow derivation of the paging population number, the IMSI of the user to be used as the Common Id of the user in the RNC, the Id of the User to be used in the paging channel (e.g. TMSI); they may also include information on the subsequent transaction related to the paging. A corresponding radio interface paging message transmitted over the radio interface at the appropriate time. The issue of storing the RANAP PAGING message for future paging repetition is FFS.

It should be noted that each RANAP PAGING message on the CN-UTRAN interface relates to only one UE and therefore the UTRAN has to pack the pages into the relevant radio interface paging message.

The CN node sending the RANAP PAGING message shall set the CN domain indicator according to its own type i.e. CS domain or PS domain.

Note. Once the domain distribution is clarified with SA2 the Paging indicator may need to be modified.

A single RANAP PAGING message across the CN to UTRAN interface contains information on the area in which the page shall be broadcast. This is indicated with UE location parameter (content FFS, e.g. LA or RA).

The signalling flow of the paging procedure is illustrated in ~~Figure 30~~Figure 18 ~~Figure 16~~.



Figure ~~3018~~16. Paging procedure.

8.8 Trace Invocation

[Editor's note: TTC/ARIB does not have Trace Invocation procedure. The ETSI procedure is used as a base.]

The purpose of the trace invocation procedure is to inform the receiving entity that it should begin producing a trace record on this particular transaction.

The trace is invoked by the CN sending a RANAP CN INVOKE TRACE message to the UTRAN.

The events and parameters to be recorded are indicated in the "Trace type" information element.

The element "OMCId", if present, indicates the OMC to which the record is destined.

The CN may allocate and include an "CN transaction reference" (typically a call reference) into the RANAP CN INVOKE TRACE message. The transaction reference is contained in the information element "TransactionId".

The message includes a trace reference which is allocated by the entity which triggered the trace.

The element “TriggerId”, if present, indicates the entity which triggered the trace.

The trace reference, triggerId and transactionId Information Elements are used to tag the trace record to allow simpler construction of the total record by the entity which combines trace records.

The messages are not acknowledged and are sent as a connection oriented message on the connection on which a trace is required.

The signalling flow of the Trace invocation procedure is shown in ~~Figure 32~~ ~~Figure 19~~ ~~Figure 17~~.

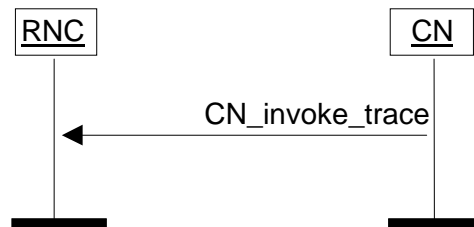


Figure ~~32~~ ~~19~~ ~~17~~. Trace Invocation procedure.

8.9 Cipher Mode Control

8.9.1 Successful operation

The cipher mode control procedure allows the CN to pass cipher mode information to the UTRAN to select and load the user data and signaling encryption device with the appropriate key.

This is achieved by sending the UTRAN a RANAP CIPHER MODE COMMAND message. Receipt of the message at the UTRAN will cause the generation of a radio interface CIPHERING MODE COMMAND message and, if applicable, invoke the encryption device and start stream ciphering.

If within the RANAP CIPHER MODE COMMAND, the signaling element “Cipher response mode” is present and indicates “IMEI must be included by the Mobile Station”, then the UTRAN shall request in the radio interface message CIPHERING MODE COMMAND the Mobile Station to include its IMEI in the radio interface CIPHERING MODE COMPLETE message.

In the RANAP CIPHER MODE COMMAND the CN specifies which of the ciphering algorithms may be used by the UTRAN. The UTRAN then selects internally an appropriate algorithm, taking into account the UE ciphering capabilities. The UTRAN can deduce from the UE capability information of the supported algorithms. The RANAP CIPHER MODE COMPLETE message returned to the CN indicates the chosen ciphering algorithm. The set of permitted ciphering algorithms specified in the RANAP CIPHER MODE COMMAND shall remain applicable for subsequent Assignments and Intra-UTRAN Handovers.

The RANAP CIPHER MODE COMMAND and RANAP CIPHER MODE COMPLETE messages are sent as connection oriented messages via the appropriate SCCP signalling connection.

Receipt of the radio interface CIPHERING MODE COMPLETE message (or other correctly deciphered layer 2 frame) from the radio interface is used internally within the UTRAN to achieve radio interface ciphering synchronisation. When the UTRAN receives the radio interface CIPHERING MODE COMPLETE from the UE a RANAP CIPHER MODE COMPLETE message is returned to the CN.

The handling of ciphering keys from two CN entities is FFS.

The signalling flow of the successful Cipher mode control procedure is shown in ~~Figure 34~~ ~~Figure 20~~ ~~Figure 18~~.

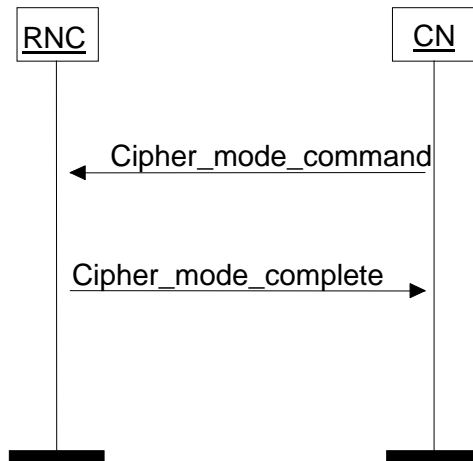


Figure 342018. Cipher Mode Control procedure, successful case.

8.9.2 Abnormal conditions

If the UTRAN or the UE is unable to support the ciphering algorithm specified in the RANAP CIPHER MODE COMMAND message then it shall return a RANAP CIPHER MODE REJECT message with Cause value “Ciphering algorithm not supported”. A RANAP CIPHER MODE REJECT message shall also be returned if the CN requests a change of ciphering algorithm when ciphering is already active.

The signalling flow of the Cipher mode control procedure in abnormal conditions is shown in Figure 362119.

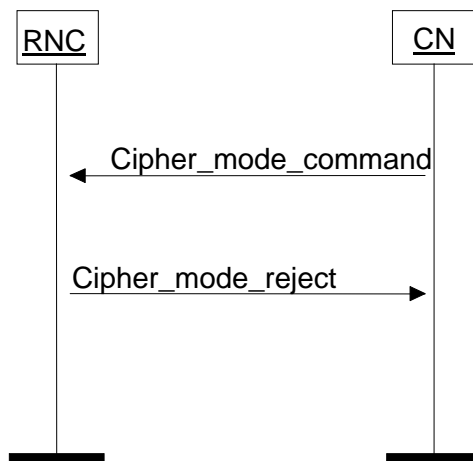


Figure 362119. Cipher Mode Control procedure, unsuccessful case.

8.10 CN Information Broadcast

[Editor's note: TTC/ARIB does not have CN Information broadcast procedure. The ETSI procedure is used as a base.]

A functionality of the (UT)RAN is to broadcast repetitively to all users [in idle mode] system information as provided by the core network. A core network element sets or modifies the CN system information by sending a RANAP CN INFORMATION BROADCAST REQUEST message which indicates:

- The information pieces to be broadcast, as a number of bit strings. The internal structure of these bit strings is not known or analysed by the RAN, and is specified as part of the CN-MS protocols.

- With each bit string, a geographical area where to broadcast it.
- With each bit string, some categorisation parameters to be used by the RAN to determine how to schedule the repetition cycle.

If the UTRAN can broadcast the information as requested, a RANAP CN INFORMATION BROADCAST CONFIRM message is returned to the CN.

If the UTRAN can not broadcast the information as requested, a RANAP CN INFORMATION BROADCAST REJECT message is returned to the CN.

Each information piece is broadcast in the intersection between the indicated geographical area and the area under control by the receiving RNC. It is broadcast until explicitly changed or a reset occurs. A CN element will run this procedure typically after each reset, and whenever the information needs to be changed.

Between a reset and the first reception of this message, what is broadcast is FFS. However, great care shall be taken to ensure that UE's do not reselect another PLMN and cause e.g. a surge of location updating on that other PLMN.

8.11 Direct Transfer

The Direct Transfer procedure is used to carry UE – CN signalling messages over the Iu Interface. The UE – CN signalling messages are not interpreted by the UTRAN, and their content (e.g. MM or CC message) is outside the scope of this specification. The UE – CN signalling messages are transported as a parameter in the Direct Transfer messages.

When the CN has message that has to be sent to the UE (e.g. a CC or MM message) it will send DIRECT TRANSFER to the RNC including the CN to UE message as a parameter. The signalling flow for the CN originated Direct transfer procedure is shown in [Figure 38](#)~~Figure 22~~[Figure 20](#).



Figure ~~38~~~~22~~[20](#). Direct Transfer, CN originated.

When the RNC has received a message from the UE that has to be sent to the CN without interpretation (e.g. a CC or MM message in response to the previously sent CC or MM message from the CN) it will send DIRECT TRANSFER to the CN and including the UE to CN message as a parameter. The signalling flow for the UTRAN originated Direct transfer procedure is shown in [Figure 40](#)~~Figure 23~~[Figure 21](#).



Figure ~~40~~~~23~~[21](#). Direct Transfer, RNC originated.

8.12 Initial UE Message

When the Iu signaling connection establishment is performed by the RNC, the radio interface initial layer 3 message received from the UE is proceeded.

The RNC shall analyze the protocol discriminator of the message and if entire radio interface initial layer 3 message (e.g. CM SERVICE REQUEST, LOCATION UPDATE REQUEST, PAGING RESPONSE, IMUI DETACH) is also passed to the CN, using an INITIAL UE MESSAGE. The RNC does not analyze the contents of the initial layer 3 message, it may be added the other information (e.g. chosen channel and cell Identifier)..

The signalling flow for Initial UE Message procedure is shown in Figure 42 Figure 24 Figure 22.

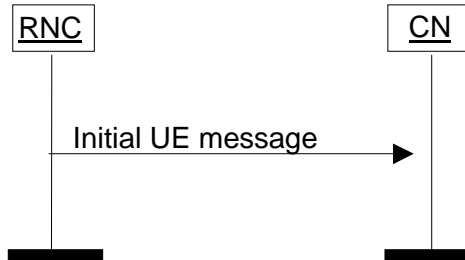


Figure 42 Figure 24 Figure 22. Initial UE Message procedure.

8.13 Location Request Reporting Control

Note. This procedure needs to be aligned with the GSM location services.

Normal operation

The LOCATION REPORTING CONTROL REQUEST message is issued from the CN to the RNC. It is used to initiate, modify or stop location reporting from RNC to CN retrieve the UE location information, while the UE, whose location is to be reported has its connection with the CN network. Each ongoing Location reporting is assigned a reporting number, which will be used in Location Report messages triggered by the respective Location Reporting Control procedure.

Note. The identification of different location reports is FFS.

The signalling flow for Location Request procedure is shown in Figure 44 Figure 24 Figure 23.

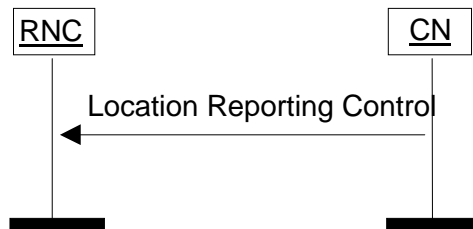


Figure 44 Figure 23. Location Request Reporting Control procedure.

Abnormal conditions

Abnormal conditions in RNC

If RNC receives a Location Reporting Control message indicating a change in measurement parameters which are in contradiction to existing parameters RNC shall ignore the existing parameters in RNC and assume the parameters given in the new message as correct. *Note. The definition of existing parameters is FFS.*

8.14 Location Report

Successful operation

The LOCATION REPORT message is issued from the RNC to the CN. It is used to provide the UE location information to the CN. This may be used as a response for the LOCATION REQUEST message. Other triggers of this message are FFS.

The signalling flow for Location Report procedure is shown in ~~Figure 46~~ ~~Figure 25~~ ~~Figure 24~~.

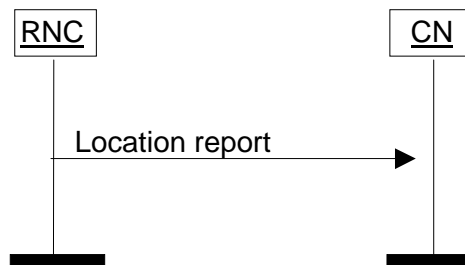


Figure ~~46~~ ~~25~~ ~~24~~. Location Report procedure.

Unsuccessful operation

If the RNC can not deliver the location information as requested, RNC shall indicate UE location to be "Undetermined". A cause value shall be added to indicate the reason for the undetermined location.

Abnormal conditions

Abnormal conditions in CN

If CN receives a Location Report message reporting Location that was not requested by CN, CN should stop the indicated location reporting by utilising Location Reporting Control procedure. (FFS).

Error Indication

The Error Indication procedure is used to carry error messages over the Iu Interface. The procedure uses the connectionless mode of the signalling connection.

CN originated Error Indication

On the PS side, the SGSN may send an Error Indication to the RNC if it receives a G-PDU with an unknown Flow Label. The Cause Value to be used is:

- 'Unknown Flow Label'

For the Cause Value 'Unknown Flow Label', both Binding Identity and Network Layer Address is mandatory.

The Binding Identity, i.e. the Flow Label, and the Network Layer Address used in the Error Indication message shall be fetched from the G-PDU that triggered the procedure.

The signalling flow for the CN originated Error Indication procedure is shown in ~~Figure 48~~ ~~Figure 26~~.

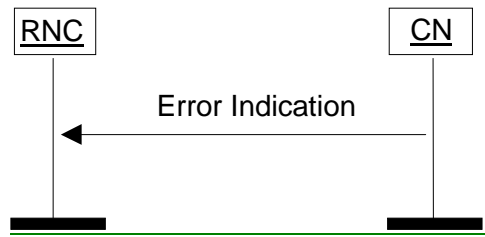


Figure 4826. Error Indication, CN originated.

RNC originated Error Indication

On the PS side, the RNC may send an Error Indication to the SGSN if it receives a G-PDU with an unknown Flow Label. The Cause Value to be used is:

- 'Unknown Flow Label'

For the Cause Value 'Unknown Flow Label', both Binding Identity and Network Layer Address is mandatory.

The Binding Identity, i.e. the Flow Label, and the Network Layer Address used in the Error Indication message shall be fetched from the G-PDU that triggered the procedure.

The signalling flow for the UTRAN originated Error Indication procedure is shown in Figure 50Figure 27.

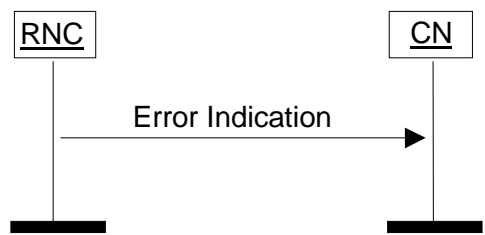


Figure 5027. Error Indication, RNC originated.

9 Elements for RANAP communication

9.1 Message functional definition and content

[Editor's note: ETSI has not yet discussed the parameters of RANAP messages. The text from the TTC/ARIB document will be used as a starting point, but the contents is not agreed and is FFS. In the cases when the messages are the same, TTC/ARIB agree to adopt the ETSI name for the message.]

For each message there is, a table listing the signaling elements in their order of appearance in the transmitted message.

All the RANAP messages are listed in the following table:

Message name	Reference
RADIO ACCESS BEARER ASSIGNMENT REQUEST	
RADIO ACCESS BEARER ASSIGNMENT RESPONSE	
RADIO ACCESS BEARER ASSIGNMENT FAILURE	

RADIO ACCESS BEARER SETUP	
RADIO ACCESS BEARER SETUP RESPONSE	
RADIO ACCESS BAERER SETUP FAILURE	
RADIO ACCESS BEARER RECONFIGURATION	
RADIO ACCESS BEARER RECONFIGURATION RESPONSE	
RADIO ACCESS BEARER RECONFIGURATION FAILURE	
RADIO ACCESS BEARER RELEASE	
RADIO ACCESS BEARER RELEASE RESPONSE	
RADIO ACCESS BEARER RELEASE REOUEST	
COMMON ID	
DIRECT TRANSFER	
INITIAL UE MESSAGE	
LOCATION REOUEST	
LOCATION REPORT	
CIPHER MODE COMMAND	
CIPHER MODE COMPLETE	
CIPHER MODE REJECT	
PAGING	
IU RELEASE COMMAND	
IU RELEASE COMPLETE	
RELOCATION REQUIRED	
RELOCATION REQUEST	
RELOCATION REQUEST ACKNOWLEDGE	
RELOCATION COMMAND	
RELOCATION DETECT	
RELOCATION COMPLETE	
RELOCATION FAILURE (FES)	
RESET	
RESET ACKNOWLEDGE	
CONFUSION	

Table 1. List of RANAP messages.

9.1.4 Message Contents

RADIO ACCESS BEARER ASSIGNMENT REQUEST

<u>Information element</u>	<u>Reference</u>	<u>Type</u>
<u>Message type</u>		<u>M</u>
<u>Bearers x n to be setup or modified</u>		<u>C1</u>
<u>Bearer ID</u>		<u>M</u>
<u>Bearer parameters</u>		<u>M (1)</u>
<u>Transport Address</u>		<u>M</u>
<u>Iu transport association</u>		<u>M</u>
<u>Priority level and pre-emption indication</u>		<u>O (2)</u>
<u>Bearer linking</u>		<u>O</u>
<u>Bearers x n to be released</u>		<u>C1</u>
<u>Bearer ID</u>		<u>M</u>
<u>Cause</u>		<u>M</u>

C1 At least one group shall be present.

(1) This includes all the necessary parameters for bearers (both for MSC and SGSN) including QoS.

(2) It needs to be clarified how this parameter is in relation to priority parameters already included with the Bearer parameters.

Note. It needs to be clarified how the re-ordering information as proposed in Tdoc 276 relates to QoS attribute SDU in-sequence delivery.

RADIO ACCESS BEARER ASSIGNMENT RESPONSE

<u>Information element</u>	<u>Reference</u>	<u>Type</u>
<u>Message type</u>		<u>M</u>
<u>Location Identifier</u>		<u>O</u>
<u>Bearers x n established or modified</u>		<u>C1</u>
<u>Bearer ID</u>		<u>M</u>
<u>Bearer parameters</u>		<u>O (1)</u>
<u>Transport address</u>		<u>M (2)</u>
<u>Iu transport association</u>		<u>M (2)</u>
<u>Bearers x n released</u>		<u>C1</u>
<u>Bearer ID</u>		<u>M</u>
<u>Cause</u>		<u>M</u>

C1 At least one group shall be present.

- (1) Bearer parameters are needed only if something has changed.
- (2) Always present for SGSN.

RADIO ACCESS BEARER ASSIGNMENT FAILURE

<u>Information element</u>	<u>Reference</u>	<u>Type</u>
<u>Message type</u>		<u>M</u>
<u>Location Identifier</u>		<u>O</u>
<u>Bearers x n successfully setup or modified</u>		<u>C1</u>
<u>Bearer ID</u>		<u>M</u>
<u>Bearer parameters</u>		<u>O (1)</u>
<u>Transport address</u>		<u>M (2)</u>
<u>Iu transport association</u>		<u>M (2)</u>
<u>Bearers x n failed to setup</u>		<u>C1</u>
<u>Bearer ID</u>		<u>M</u>
<u>Cause</u>		<u>M</u>
<u>Bearers x n released</u>		<u>C1</u>
<u>Bearer ID</u>		<u>M</u>
<u>Cause</u>		<u>M</u>

C1 At least one group shall be present

- (1) Bearer parameters are needed only if something has changed.
- (2) Always present for SGSN.

9.1.1.1 RADIO ACCESS BEARER SETUP (FFS)

The RADIO ACCESS BEARER SETUP message is sent from the CN to the RNC via the relevant SCCP connection in order to request the RNC to assign radio resources, the attributes of which are defined within the message.

INFORMATION ELEMENT	REFERENC E	DIRECTION	TYPE	LEN
Message Identifier		CN-RNC	M	
Length		CN-RNC	M	
Message Compatibility Information		CN-RNC	M	
Bearer ID		CN-RNC	M (1)	
User Information Rate		CN-RNC	M	
Information Transfer Capability		CN-RNC	M	
ATM address		CN-RNC	M (2)	
ATM Binding ID		CN-RNC	M	
Group Call Reference		CN-RNC	O (3)	
Talker Flag		CN-RNC	O (4)	

1This element should be used instead of Call Id, however if Bearer Id has not been supported, it might be used Call Id.

2This element should include the AAL2 address or ATM address.

3This may be included by the CN for either a talking or listening subscriber in a group call.

4This element is included for group calls, when this is included it indicates that the mobile is a talker in the call else the mobile is a listener.

9.1.1.2 RADIO ACCESS BEARER SETUP RESPONSE (FFS)

The RADIO ACCESS BEARER SETUP RESPONSE message is sent from the RNC to the CN and that the requested Radio Access Bearer has been completed correctly.

The message is sent via the SCCP connection associated with the dedicated resource(s).

INFORMATION ELEMENT	REFERENC E	DIRECTION	TYPE	LEN
Message Identifier		RNC-CN	M	
Length		RNC-CN	M	
Message Compatibility Information		RNC-CN	M	

9.1.1.3 RADIO ACCESS BEARER SETUP FAILURE (FFS)

The RADIO ACCESS BEARER SETUP FAILURE message is sent from the RNC to the CN. It indicates that there has been a failure in the Radio Access Bearer Setup process at the RNC and that the Radio Access Bearer Setup procedure has been aborted.

The message is sent via the SCCP connection associated with the dedicated resource(s).

INFORMATION ELEMENT	REFERENC E	DIRECTION	TYPE	LEN
Message Identifier		RNC-CN	M	
Length		RNC-CN	M	
Message Compatibility Information		RNC-CN	M	
Cause		RNC-CN	O	
RR Cause		RNC-CN	O	

9.1.1.4 RADIO ACCESS BEARER RECONFIGURATION (FFS)

The RADIO ACCESS BEARER RECONFIGURATION message is sent from the CN to the RNC to indicate a change in Radio Access Bearer Capability for a call.

The message is sent via the SCCP connection associated with the dedicated resource(s).

INFORMATION ELEMENT	REFERENC E	DIRECTION	TYPE	LEN
Message Identifier		CN-RNC	M	
Length		CN-RNC	M	
Message Compatibility Information		CN-RNC	M	
Bearer ID		CN-RNC	M(1)	
User Information Rate		CN-RNC	M	
Information Transfer Capability		CN-RNC	M	
Group Call Reference		CN-RNC	O(2)	
Talker Flag		CN-RNC	O(3)	

1. This element should be used instead of Call Id, however if Bearer Id has not been supported, it might be used Call Id.
2. This may be included by the CN for either a talking or listening subscriber in a group call.
3. This element is included for group calls, when this is included it indicates that the mobile is a talker in the call else the mobile is a listener.

9.1.1.5 RADIO ACCESS BEARER RECONFIGURATION RESPONSE (FFS)

The RADIO ACCESS BEARER RECONFIGURATION RESPONSE message is sent from the RNC to the CN and that the changing in Radio Access Bearer has been completed correctly.

The message is sent via the SCCP connection associated with the dedicated resource(s).

INFORMATION ELEMENT	REFERENC E	DIRECTION	TYPE	LEN
Message Identifier		RNC-CN	M	
Length		RNC-CN	M	
Message Compatibility Information		RNC-CN	M	

9.1.1.6 RADIO ACCESS BEARER RECONFIGURATION FAILURE (FFS)

The RADIO ACCESS BEARER RECONFIGURATION FAILURE message is sent from the RNC to the CN. It indicates that there has been a failure in the Radio Access Bearer Reconfiguration process at the RNC and that the Radio Access Bearer Reconfiguration procedure has been aborted.

The message is sent via the SCCP connection associated with the dedicated resource(s).

INFORMATION ELEMENT	REFERENC E	DIRECTION	TYPE	LEN
Message Identifier		RNC-CN	M	
Length		RNC-CN	M	
Message Compatibility Information		RNC-CN	M	
Bearer ID		RNC-CN	O	
Cause		RNC-CN	O	

9.1.1.7 RADIO ACCESS BEARER RELEASE (FFS)

The RADIO ACCESS BEARER RELEASE message is sent from the CN to RNC to indicate to release the associated Radio Access Bearer.

The message is sent via the SCCP connection associated with the dedicated resource(s).

INFORMATION ELEMENT	REFERENC E	DIRECTION	TYPE	LEN
Message Identifier		CN-RNC	M	

Length		CN-RNC	M	
Message Compatibility Information		CN-RNC	M	
Bearer ID		CN-RNC	M (1)	
Cause		CN-RNC	M	

1. This element should be used instead of Call Id, however if Bearer Id has not been supported, it might be used Call Id.

9.1.1.8 RADIO ACCESS BEARER RELEASE RESPONSE (FFS)

The RADIO ACCESS BEARER RELEASE message is sent from the RNC to the CN to inform the CN that the associated Radio Access Bearer has been successfully cleared.

The message is sent via the SCCP connection associated with the dedicated resource(s).

INFORMATION ELEMENT	REFERENC E	DIRECTION	TYPE	LEN
Message Identifier		RNC-CN	M	
Length		RNC-CN	M	
Message Compatibility Information		RNC-CN	M	

9.1.1.9 RADIO ACCESS BEARER RELEASE REQUEST

The RADIO ACCESS BEARER RELEASE REQUEST message is sent from the RNC to the CN to indicate to the CN that the RNC wishes to release the associated dedicated resource(s).

The message is sent via the SCCP connection associated with the dedicated resource(s).

INFORMATION ELEMENT	REFERENC E	DIRECTION	TYPE	LEN
Message Identifier		RNC-CN	M	
Length		RNC-CN	M	
Message Compatibility Information		RNC-CN	M	
Bearer ID		RNC-CN	M (1)	
Cause		RNC-CN	M	

1. This element should be used instead of Call Id, however if Bearer Id has not been supported, it might be used Call Id.

9.1.1.10 COMMON ID

The COMMON ID message is used when the UE identity related to the new signaling connection is known, to correspond UE with new signaling connection from the CN to the RNC.

The message is sent via the SCCP connection associated with the dedicated resource(s).

INFORMATION ELEMENT	REFERENC E	DIRECTION	TYPE	LEN
Message Identifier		CN-RNC	M	
Length		CN-RNC	M	
Message Compatibility Information		CN-RNC	M	
IMUI		CN-RNC	M	

9.1.1.14 DIRECT TRANSFER

The DIRECT TRANSFER message is used to transfer call control and mobility management message between the CN and the UE. The Direct Transfer information in these messages is not interpreted by the RNC.

The message is sent via the SCCP connection associated with the dedicated resource(s).

INFORMATION ELEMENT	REFERENC E	DIRECTION	TYPE	LEN
Message Identifier		Both	M	
Length		Both	M	
Message Compatibility Information		Both	M	
Direct Transfer Information		Both	M	

9.1.1.12 INITIAL UE MESSAGE

The INITIAL UE MESSAGE is sent from the RNC to the MSC as described in chapter 3.1.2 (on receipt of the initial layer 3 message on a dedicated channel, e.g. LOCATION UPDATING REQUEST, CM SERVICE REQUEST, IMUI DETACH)

The message is sent via the SCCP connection established for the associated dedicated resource(s).

INFORMATION ELEMENT	REFERENC E	DIRECTION	TYPE	LEN
Message Identifier		RNC-CN	M	
Length		RNC-CN	M	
Message Compatibility Information		RNC-CN	M	
Layer 3 Information		RNC-CN	M	
Chosen Channel		RNC-CN	O (1)	
Cell Identifier		RNC-CN	O	

1. This element is optionally send by the RNC to give the CN a description of the channel rate/type on which the initial layer 3 message was received.

9.1.1.13 LOCATION REQUEST

The information elements for this message are FFS.

9.1.1.14 LOCATION REPORT

The information elements for this message are FFS.

9.1.1.15 CIPHER MODE COMMAND

The CIPHER MODE COMMAND message is sent from the CN to the RNC to indicate to inform the encryption parameters for connected UE.

The message is sent via the SCCP connection associated with the dedicated resource(s).

INFORMATION ELEMENT	REFERENC E	DIRECTION	TYPE	LEN
Message Identifier		CN-RNC	M	
Length		CN-RNC	M	
Message Compatibility Information		CN-RNC	M	
Cipher Information		CN-RNC	M	
Cipher Response Mode		CN-RNC	O (1)	

1. The element is used by the CN to indicate whether the IMEI is to be included in the CIPHER MODE COMPLETE message to be sent by the UE. The necessity of this element is FFS.

9.1.1.16 CIPHER MODE COMPLETE

The CIPHER MODE COMPLETE message is sent from the RNC to the CN to notify the completion of ciphering at UE.

The message is sent via the SCCP connection associated with the dedicated resource(s).

INFORMATION ELEMENT	REFERENC E	DIRECTION	TYPE	LEN
Message Identifier		RNC-CN	M	
Length		RNC-CN	M	
Message Compatibility Information		RNC-CN	M	
Chosen Cipher Algorithm		RNC-CN	O	

9.1.1.17 CIPHER MODE REJECT

The CIPHER MODE REJECT message is sent from the RNC to the MSC to indicate that the RNC is unable to perform the ciphering.

The message is sent via the SCCP connection associated with the dedicated resource(s).

INFORMATION ELEMENT	REFERENC E	DIRECTION	TYPE	LEN
Message Identifier		RNC-CN	M	
Length		RNC-CN	M	
Message Compatibility Information		RNC-CN	M	
Cause		RNC-CN	M	

9.1.1.18 PAGING

This message is sent from the CN to the RNC and contains sufficient information to allow the paging message to be transmitted by the cells at the correct time.

This message is sent by a connectionless SCCP message.

INFORMATION ELEMENT	REFERENC E	DIRECTION	TYPE	LEN
Message Identifier		CN-RNC	M	
Length		CN-RNC	M	
Message Compatibility Information		CN-RNC	M	
IMUI		CN-RNC	M	
User ID (TMUI)		CN-RNC	O (1)	
Cell Identifier List		CN-RNC	M	

1. This element is omitted in the excepting case where the IMUI is used instead of the TMUI as a paging address at the radio interface.

9.1.1.19 IU RELEASE COMMAND

The IU RELEASE COMMAND message is used for Iu Release procedure example for the Location registration process.

The message is sent via the SCCP connection associated with the dedicated resource(s).

INFORMATION ELEMENT	REFERENC E	DIRECTION	TYPE	LEN
Message Identifier		CN-RNC	M	

Length		CN-RNC	M	
Message Compatibility Information		CN-RNC	M	
Cause		CN-RNC	M	

9.1.1.20 IU RELEASE COMPLETE

The IU RELEASE COMPLETE message is sent from the RNC to the CN that the associated Signaling Channel has been cleared.

The message is sent via the SCCP connection associated with the dedicated resource(s).

INFORMATION ELEMENT	REFERENC E	DIRECTION	TYPE	LEN
Message Identifier		RNC-CN	M	
Length		RNC-CN	M	
Message Compatibility Information		RNC-CN	M	

9.1.1.21 RELOCATION REQUIRED

Information element	Reference	Type
Message type		M
Target RNC identification		M (1)
Source RNC to target RNC transparent field		O (2)

(1) The usage and format of this information element is FFS.

(2) Required only via one CN entity.

9.1.1.22 RELOCATION REQUEST

Information element	Reference	Type
Message type		M
Source RNC to target RNC transparent field		O (1)
Bearers x n to be setup		M
Bearer ID		M
Bearer parameters		M
Transport address		M
Iu transport association		M
Priority level and pre-emption indication		O
Bearer linking		O

(1) Required only via one CN entity.

9.1.1.23 RELOCATION REQUEST ACKNOWLEDGE

Information element	Reference	Type
Message type		M
Target RNC to source RNC transparent field		O (1)
Bearer x n		O (2)
Bearer ID		M
Transport address		M (3)
Iu transport association		M (3)

(1) Required only via one CN entity.

(2) Always present for SGSN, and present for MSC if parameters have been modified by target RNC.

(3) Always present for SGSN.

9.1.1.24 RELOCATION COMMAND

Information element	Reference	Type
Message type		M
Target RNC to source RNC transparent field		O (1)

(1) Required only via one CN entity.

9.1.1.25 RELOCATION DETECT

Information element	Reference	Type
Message type		M

9.1.1.26 RELOCATION COMPLETE

Information element	Reference	Type
Message type		M

9.1.1.27 RELOCATION FAILURE

Information element	Reference	Type
Message type		M
Cause		M

9.1.1.28 RESET

The RESET message can be sent either from the RNC to the CN or from the CN to the RNC. It indicates to the receiving entity that the transmitting entity has suffered a failure and has lost memory of the calls in progress, calls set up, and associated references.

The message is sent via the SCCP connection associated with the dedicated resource(s).

INFORMATION ELEMENT	REFERENC E	DIRECTION	TYPE	LEN
Message Identifier		Both	M	
Length		Both	M	
Message Compatibility Information		Both	M	
Cause		Both	M	

9.1.1.29 RESET ACKNOWLEDGE

The RESET ACKNOWLEDGE message can be sent either from the RNC to the CN or from the CN to the RNC. It indicates to the receiving entity that the transmitting entity has cleared all call references, and ready to resume service.

The message is sent via the SCCP connection associated with the dedicated resource(s).

INFORMATION ELEMENT	REFERENC E	DIRECTION	TYPE	LEN
Message Identifier		Both	M	
Length		Both	M	
Message Compatibility Information		Both	M	

9.1.1.30 CONFUSION

This message is sent in either direction in response to a message which can not be treated correctly for some reason, and for which another failure message can not substitute. The use of this message may be under operator control.

ERROR INDICATION

<u>Information element</u>	<u>Reference</u>	<u>Type</u>
<u>Message type</u>		<u>M</u>
<u>Cause</u>		<u>M</u>
<u>Binding ID</u>		<u>O</u>
<u>Source Network Layer Address</u>		<u>O</u>

9.2 Information element functional definition and contents

[Editor's note: RANAP information elements have not yet been discussed in ETSI. If ASN.1 and BER will be used, section 9.2.4 may not be needed at all. The corresponding text from TTC/ARIB document will be included, but it has not been agreed and is FFS.]

Study item 7: Usage of ASN.1 and encoding rules versus the description of information elements in TTC/ARIB document.]

This paragraph contains the CODING of the signaling elements used.

9.2.4 RANAP coding standard

Length Indicator

It is desirable to have Length for messages and parameters because future version of protocol may have extension to the present message or parameter, and also variable size can be present in some parameters as well.

In case of message size exceeding 256 byte it is better to have 2 bytes for message LENGTH.

However it is enough to have 1 byte for parameter LENGTH.

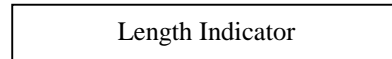
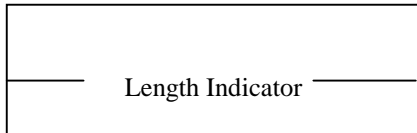


Fig. 9.2.4.1-2 Length Indicator for Parameter

Fig. 9.2.4.1-1 Length Indicator for Message

Compatibility Information

Compatibility Information is used in the situation of unrecognized messages or parameter. This parameter should be placed at a certain place then it is easy to pick up this parameter in any circumstances.

Consequently, the format can be as follow:

Message Identifier / Length / Compatibility Info / parameters

Parameter Identifier / Length / Compatibility Info / Fields

Figure 3 shows the coding format of message and Figure 4 shows the coding format of parameter.

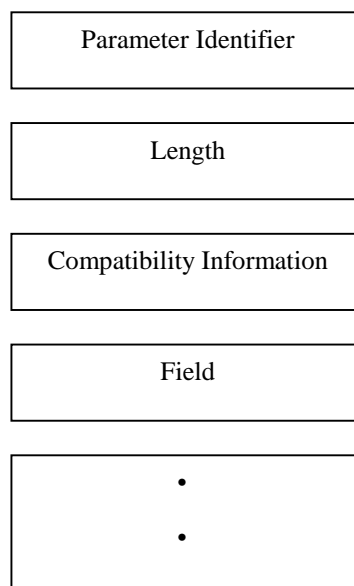
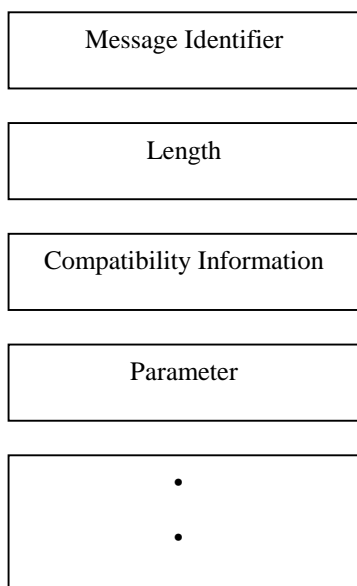


Fig. 9.2.4.1-3 Message Coding Format

Fig. 9.2.4.1-4 Parameter Coding Format

Fixed size data and Variable size data in Field

It may have two types of field i.e. with variable size or fixed size in data of field. It has no any problem to specify the fixed size field. Figure5 shows an example of fixed size data in field.

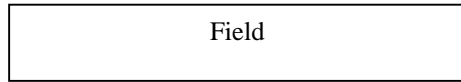


Fig. 9.2.4.1-5 Format for fixed size field

Regarding the variable size of data

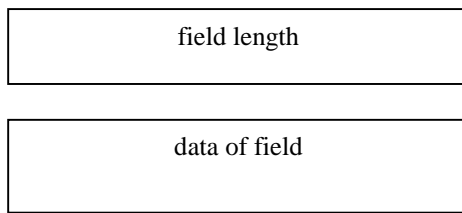


Fig. 9.2.4.1-6 Length method

9.2.2 Signaling Element Coding

The following convention are assumed for the sequence of transmission of bits and bytes:

Each bit position is marked as 1 to 8. Bit 1 is the least significant bit and is transmitted first.

In an element octets are identified by number, octet 1 is transmitted first, then octet 2 etc.

The elements used and their CODING are:

Element Identifier Coding	Element name	Reference
	Call ID	
	Bearer ID	
	User Information Rate	
	Information Transfer Capability	
	ATM Address	
	ATM Binding ID	
	Cause	
	RR Cause	
	MS Classmark for RAN	

	Direct Transfer Information	
	Layer 3 Information	
	IMUI	
	TMUI	
	Cipher Information	
	Cell Identifier List	
	Cell Identifier	
	Chosen Channel	
	Cipher Response Mode	
	Chosen Cipher Algorithm	
	Group Call Reference	
	Talker Flag	
	Layer 3 Radio Information	
	Response Request	

9.2.2.4 Message Type

Message Type uniquely identifies the message being sent. It is a single octet element, mandatory in all messages.

	8765 4321	
		Reserved
BEARER SETUP MESSAGES		RADIO ACCESS BEARER SETUP RADIO ACCESS BEARER SETUP RESPONSE RADIO ACCESS BEARER SETUP FAILURE
MODIFICATION MESSAGES		STREAMLINING STREAMLINING RESPONSE RADIO ACCESS BEARER RECONFIGURATION RADIO ACCESS BEARER RECONFIGURATION RESPONSE RADIO ACCESS BEARER RECONFIGURATION FAILURE
BEARER RELEASE MESSAGES		RADIO ACCESS BEARER RELEASE RADIO ACCESS BEARER RELEASE RESPONSE CONFUSION
GENERAL MESSAGE		RESET RESET ACKNOWLEDGE
		DIRECT TRANSFER INITIAL UE MESSAGE CIPHER MODE COMMAND CIPHER MODE COMPLETE CIPHER MODE REJECT PAGING REQUEST IU RELEASE IU RELEASE COMPLETE COMMON ID TA REQUEST TA REQUEST RESPONSE USER INFORMATION INQUIRY REQUEST USER INFORMATION INQUIRY RESPONSE
		HANDOVER REQUIRED HANDOVER REQUEST HANDOVER REQUEST ACKNOWLEDGE HANDOVER COMMAND HANDOVER DETECT HANDOVER COMPLETE HANDOVER FAILURE

9.2.2.2 Message Compatibility Information

Message Compatibility Information is used in the situation of unrecognized messages.

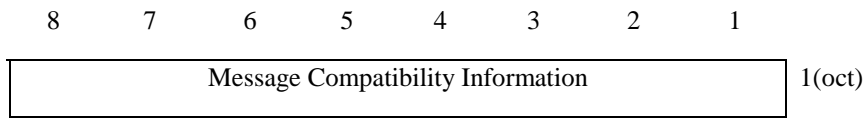


Figure 9.2.4.2-2 Message Compatibility Information

Table 9.2.4.2-2 Message Compatibility Information octet

Bit	
8	Reserved
:	
4	Pass On not possible
3	Discard Message
2	Send Notify (1)
1	Release Indicator

1. It should be used in CONFUSION message

9.2.2.3 Parameter Compatibility Information

Parameter Compatibility Information is used in the situation of unrecognized messages.

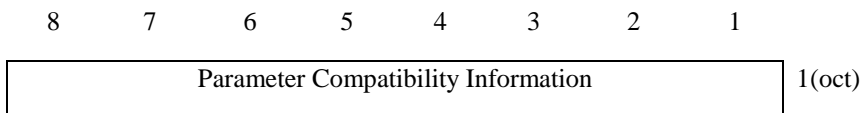


Figure 9.2.4.2-3 Parameter Compatibility Information

Table 9.2.4.2-3 Parameter Compatibility Information octet (The detail is FFS.)

Bit	
8	Reserved
:	
4	Pass On not possible
3	Discard Message
2	Send Notify (1)
1	Release Indicator



1. It should be used in CONFUSION message

9.2.2.4 Call ID

This element is included the Transaction Identifier (TI), which belongs to the Call Control protocol.

The Transaction Identifier fields are coded as defined in CC Protocol description.

This element may be not used.

9.2.2.5 Bearer ID

The Bearer Identifier fields are coded as defined in CC Protocol description.

9.2.2.6 User Information Rate

This element is included the User Information rate which has been requested by the UE..

[Note: The following should be described the coding format.(The detail is FFS.)]

9.2.2.7 Information Transfer Capability

This element is included Information Transfer Capability which has been requested by the UE.

[Note: The following should be described the coding format.(The detail is FFS.)]

9.2.2.8 ATM Address

This element should include the AAL2 address or ATM address.

[Note: The following should be described the coding format.(The detail is FFS.)]

9.2.2.9 ATM Binding ID

This element is included ATM Binding ID.

[Note: The following should be described the coding format.(The detail is FFS.)]

9.2.2.10 Cause

This element is used to indicate the reason for a particular event to have occurred and is coded as shown below.

The cause value is asingle octet element if the extension bit (bit 8) is set to 0. If it is set to 1 then the cause value is a 2octet field.

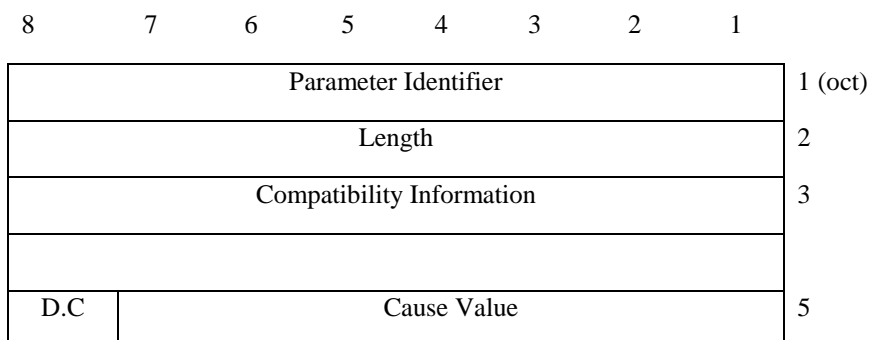


Figure 9.2.4.2-10 format of Cause

Cause Value:

Class : Normal event

Class: Normal event

Class: Resource unavailable

Class : Service or option not available

Class : Service or option not implemented

Class : invalid message (eg parameter out of range)

Class : protocol error

Class : interworking

The following table shows example of cause value.

Table 9.2.4.2-10 cause value

Cause Value		
class	value	
<u>765</u>	<u>4321</u>	
		Normal termination Mobile illegal (ex. Authentication NG) O & M intervention Equipment failure Protocol error Message type non-existent or not implemented Information element/parameter non-existent or not implemented Radio link failure BS approach link failure Timer expired Ciphering algorithm not supported Resource unavailable <ul style="list-style-type: none"> • Other values are reserved

9.2.2.11 RR Cause

This fixed length element is passed from the radio interface to the CN transparently, when received in a RRC message.

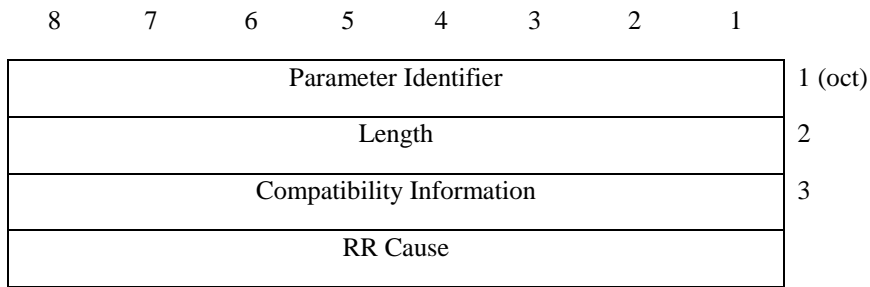


Figure 9.2.4.2-11 format of RR Cause

Oct 2 is coded as the equivalent field from RRC protocol descriptor.

9.2.2.12 MS Classmark for RAN

This element defines attributes of the UE equipment in use on a RNC. It should include Ciphering algorithm and Radio capability etc. (the detail is FFS.)

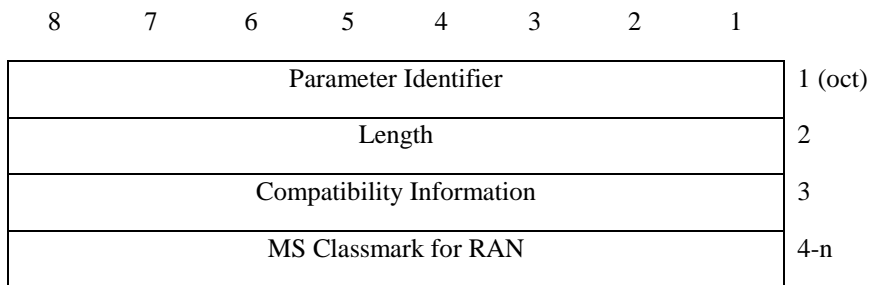


Figure 9.2.4.2-12 format of MS Classmark for RAN

9.2.2.13 Direct transfer Information

This element is included in call control and mobility management messages, which transfer between the CN and the UE. The RNC does not interpret this element.

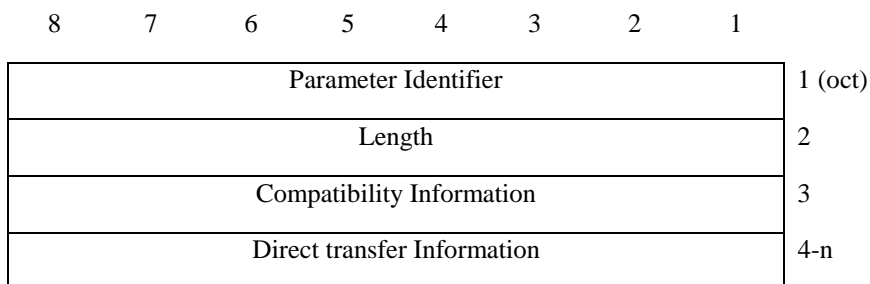
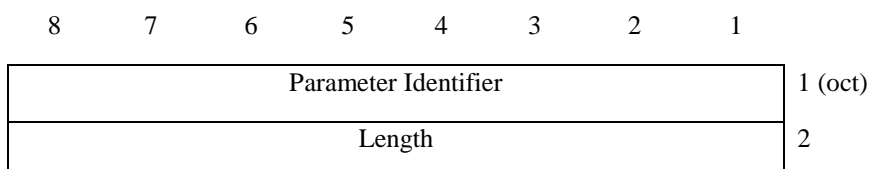


Figure 9.2.4.2-13 format of Direct transfer Information

9.2.2.14 Layer 3 Information

This variable element is used to pass radio interface messages from one network entity to another.



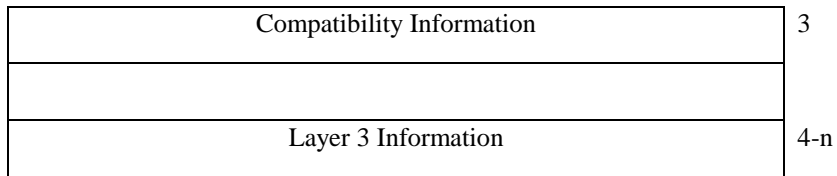


Figure 9.2.4.2-14 format of Layer 3 Information

9.2.2.15 IMUI

The IMUI is a variable length element, and include a length indicator. The remainder of this coded as defined in MM protocol description.

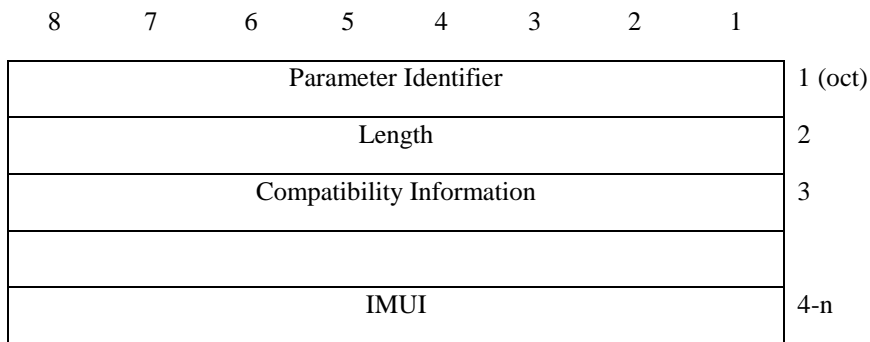


Figure 9.2.4.2-15 format of IMUI

9.2.2.16 TMUI

The TMUI is a fixed length element. The TMUI an unstructured number of 4 octets length.

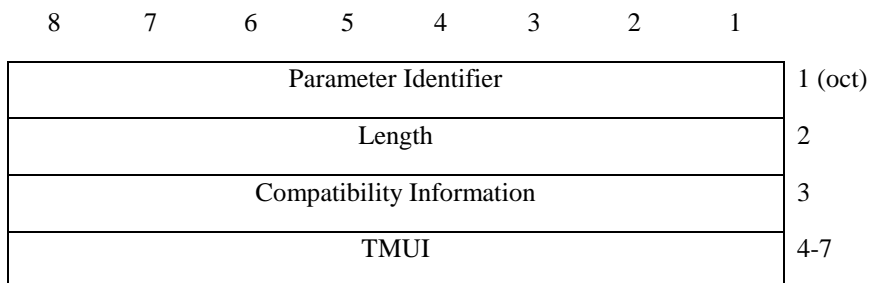


Figure 9.2.4.2-16 format of TMUI

9.2.2.17 Cipher Information

This element contains the cipher key.

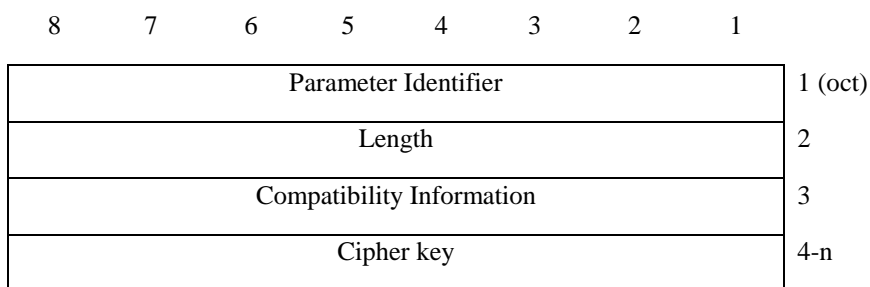


Figure 9.2.4.2-17 format of Cipher Information

9.2.2.18 Cell Identifier List

This element uniquely identifies cells and is of variable length containing.

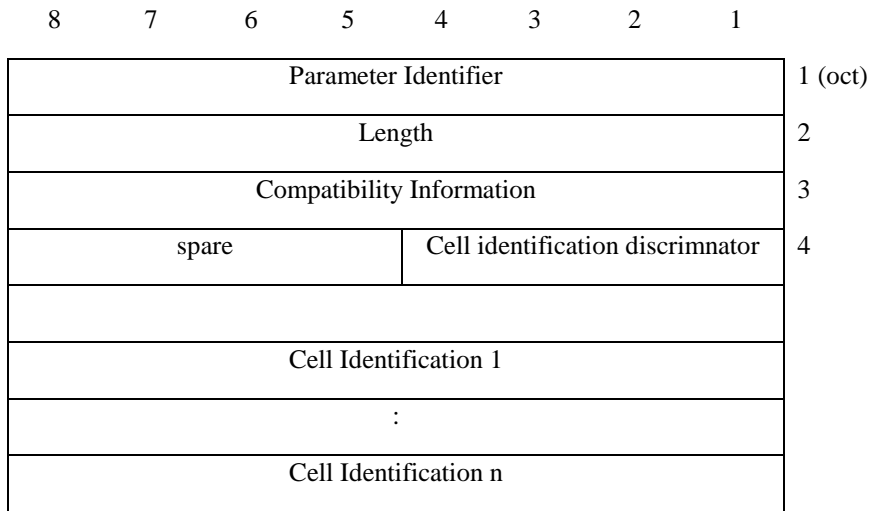


Figure 9.2.4.2-18 format of Cell Identifier List

9.2.2.19 Cell Identifier

This element uniquely identifies cell which a RNC and is of variable length containing.

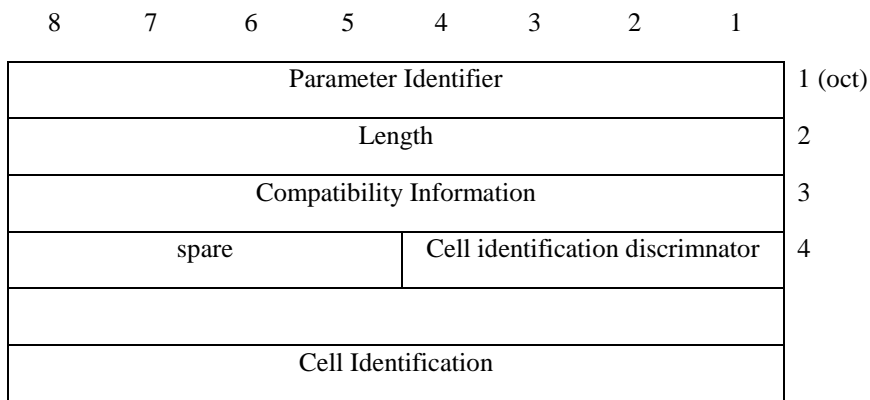


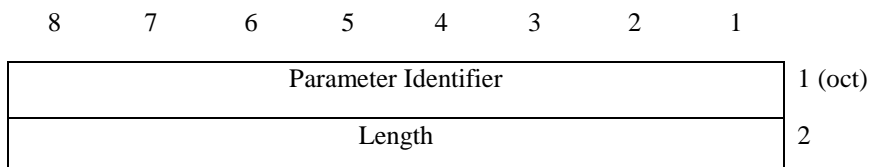
Figure 9.2.4.2-19 format of Cell Identifier

9.2.2.20 Chosen Channel

This element contains a description of the channel allocated for the call in the cell. (the detail is FFS.)

9.2.2.21 Cipher Response Mode

This information element is used by the CN to indicate whether the IMEI is to be included in the CIPHERING MODE COMPLETE message to be sent by the UE. (the detail is FFS.)



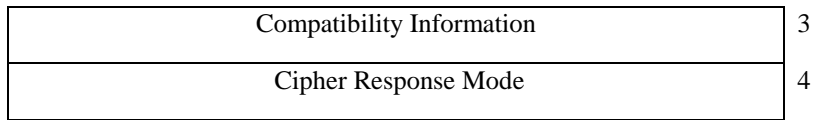


Figure 9.2.4.2-21 format of Cipher Response Mode

9.2.2.22 Chosen Cipher Algorithm

This information element indicates the cipher algorithm using by the RNC.

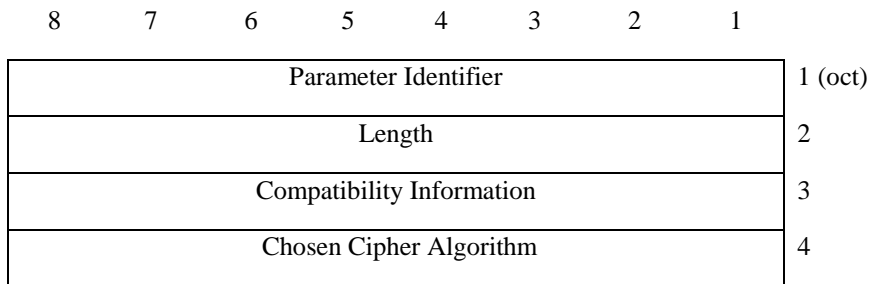


Figure 9.2.4.2-22 format of Chosen Cipher Algorithm

9.2.2.23 Group Call Reference

This element may be not used.

9.2.2.24 Talker Flag

This element may be not used.

9.2.2.25 Layer 3 Radio Information

This information element is used for forwarding the radio information, when it does not exist the Iur interface between the source RNC and the target RNC.

The RANAP should have not to analyze the contents.

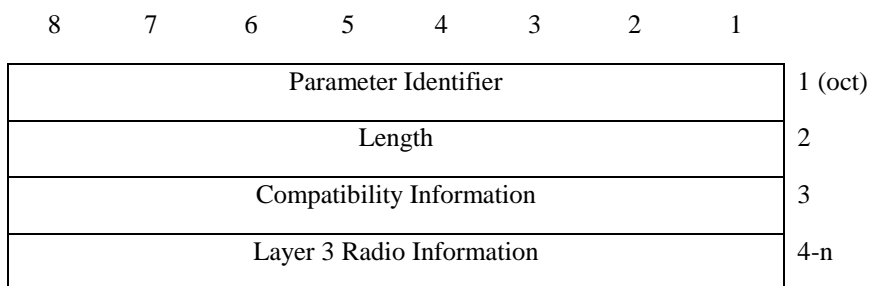


Figure 9.2.4.2-25 format of Layer 3 Radio Information

9.2.2.26 Response Request

The presence of this element indicates that a Handover Failure message is required by the RNC, if the Handover required message does not result in a handover. The necessity of this parameter is FFS.



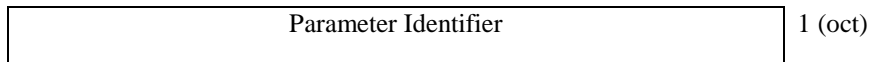


Figure 9.2.4.2-26 format of Response Request

9.3 Message and Information element abstract syntax (with ASN.1)

9.4 Message transfer syntax

9.5 Timers

[Editor's note: This chapter should list and describe the used timers.]

10 Handling of unknown, unforeseen and erroneous protocol data

11 Annex A (normative):

12 History

Document history		
0.0.1	February 1999	Document skeleton created.
0.0.2	February 1999	Relevant sections from Merged "Description of Iu Interface" have been introduced.
0.0.3	March 1999	The results of the solved study items Iu/2, Iu/3, Iu/4 and Iu/6 have been updated to the text. The heading of section 8 has been changed to "RANAP procedures".
0.0.4	April 1999	Editorial changes: - References to "Merged Description of Iu Interface" have been removed. - Remaining instances of Signalling Channel Setup and Response procedure have been removed. - In Hard HO procedure it has been corrected that target RNC receives RELOCATION COMMIT message from source RNC.

0.0.5	April 1999	<p>Editorial changes:</p> <ul style="list-style-type: none"> - Words "Radio Access", related to radio access bearer setup, reconfiguration and release messages, have been added in front of those messages where it was missing. - RAB Release procedure updated to return RAB ASSIGNMENT COMPLETE message before User plane release.
0.1.0	April 1999	Same as 0.0.5, approved by WG3.
1.0.0	April 1999	Approved by TSG RAN. Same contents as 0.1.0.
1.0.1	May 1999	<p>Main updates made based on WG3 meeting #3 and other decisions:</p> <ul style="list-style-type: none"> • Specification number changed to UMTS 25.413. • Title changed to UTRAN Iu Interface RANAP Signalling. • SRNS Relocation and Inter RNS Hard HO procedures merged to a Relocation procedure with a split to elementary procedures according to Tdoc R3-99339 with agreed modifications. The merging was possible based on the approved Tdoc R3-99340, which added RELOCATION DETECT message to the SRNS Relocation procedure. • A statement in the Relocation procedure added related to the load sharing on the Iu-PS interface, according to Tdoc R3-99257 with modifications. • Location Request and Location Report procedures added according to Tdoc R3-99358 with agreed modifications. • Information elements for Relocation procedure have been added according to Tdoc R3-99328 with modifications.
<u>1.0.2</u>	<u>June 1999</u>	<p><u>Main updates made based on WG3 meeting #4 decisions:</u></p> <ul style="list-style-type: none"> • <u>Relocation Required Indication procedure replaced by Relocation Preparation procedure according to R3-99477 with agreed modifications.</u> • <u>It was decided to use combined RAB Assignment procedure based on solved Study item Iu/5.</u> • <u>Location Request procedure was replaced by Location Reporting Control procedure according to R3-99475 with agreed modifications.</u> • <u>RANAP Error Indication procedure was introduced according to R3-99456.</u> • <u>CN domain indicator to Paging procedure was accepted according to R3-99461.</u> • <u>Information elements for RAB Assignment procedure were agreed according to R3-99503 with modifications.</u> • <u>Some minor editorial changes made.</u>
<p>Rapporteur for 3GPP UMTS 25.413 is:</p> <p>Jyrki Jussila Nokia Telecommunications</p> <p>Tel.: +358 9 5113 8436 Fax : +358 9 5113 8452 Email : jyrki.jussila@ntc.nokia.com</p>		
<p>This document is written in Microsoft Word version 7.0/96.</p>		

