

Turning off 802.11 Ad-Hoc Mode

802.11 Ad-Hoc mode can be a real problem for wireless connectivity at IETF meetings. Systems that accidentally enter ad-hoc mode appear to their users to simply not have network access, but are actually actively interfering with others' ability to use the network.

Windows XP

Change the setting on the computer's wireless card to connect only to "infrastructure networks" - real wireless access points that actually allow you to surf the Web.

How to turn off 802.11 Ad-Hoc mode when using Windows WLAN Card configuration tool

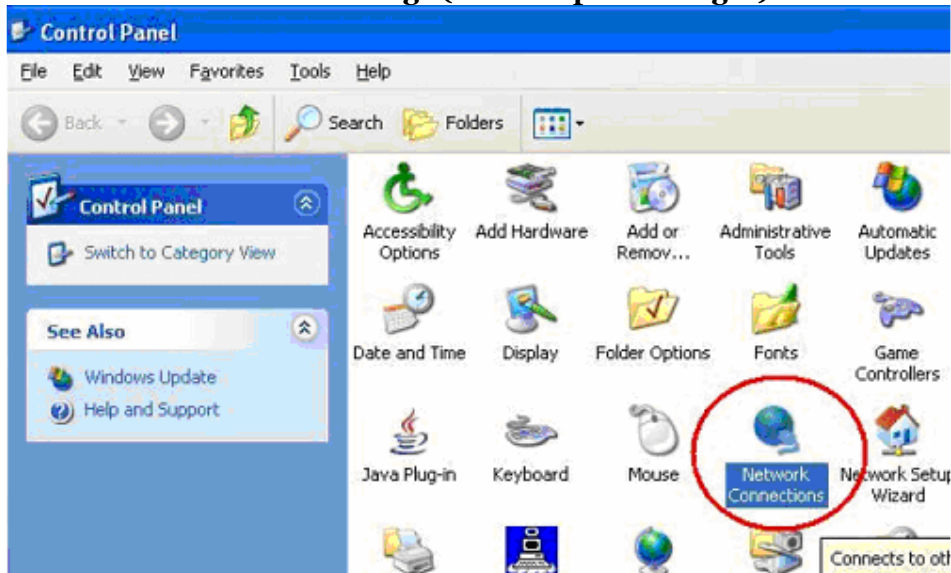
To do this, go to "Start," "Control Panel,"



The control panel can be displayed in two different formats in Windows XP. If you are using the classic view, click on the network settings in the image below. If the image below doesn't look similar to yours, you might be using the standard category view so please skip down one image.

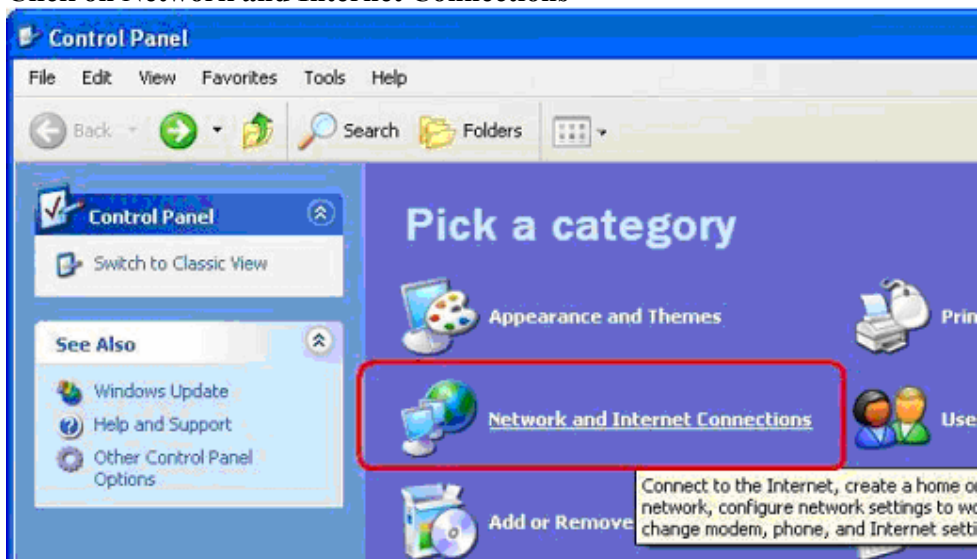
Control Panel - Classic View (Step one of one)

Double click Network Settings (Then skip two images)



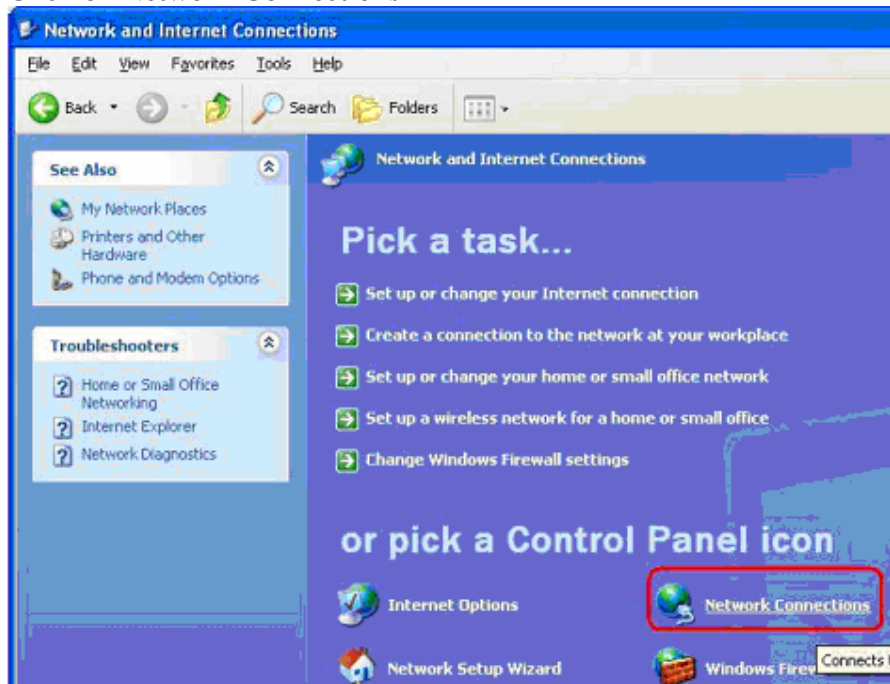
Control Panel - Category View (Step one of two)

Click on Network and Internet Connections



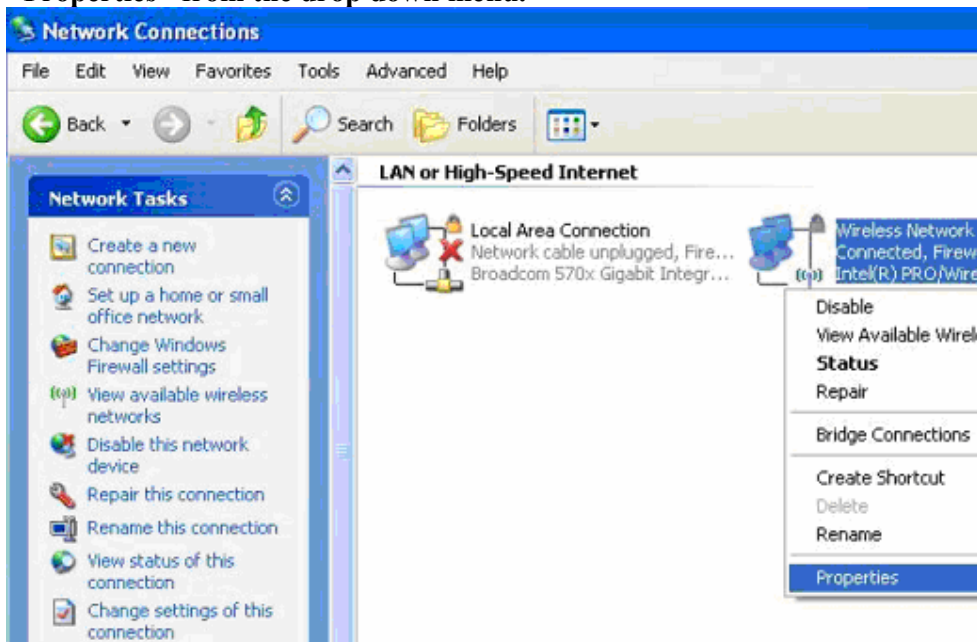
Control Panel - Category View (Step two of two)

Click on Network Connections

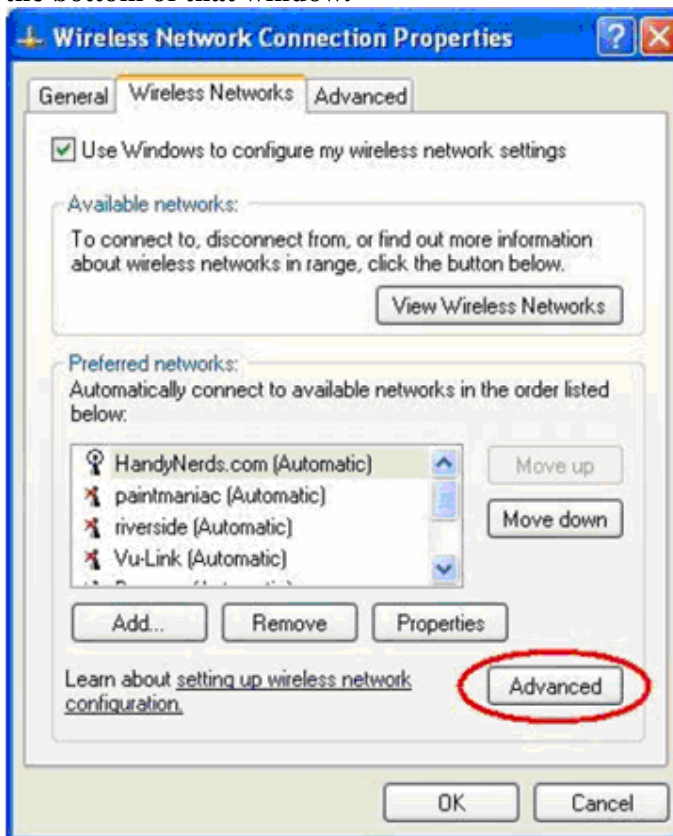


Regardless of "Classic" or "Category" view, we should all arrive at the next screen together.

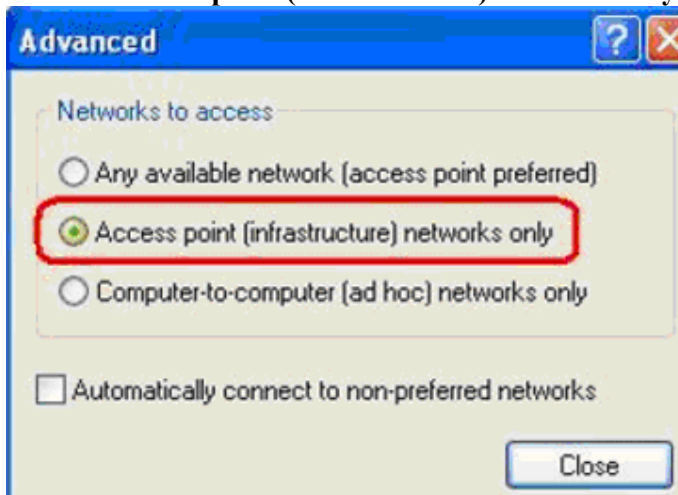
Right click on the entry labelled "wireless network connection" and select "Properties" from the drop down menu.



Then click on the "Wireless Networks" tab, and then on the "Advanced" tab at the bottom of that window.



A box should pop up that gives you three buttons to choose from: Select the one next to "Access point (infrastructure) networks only."



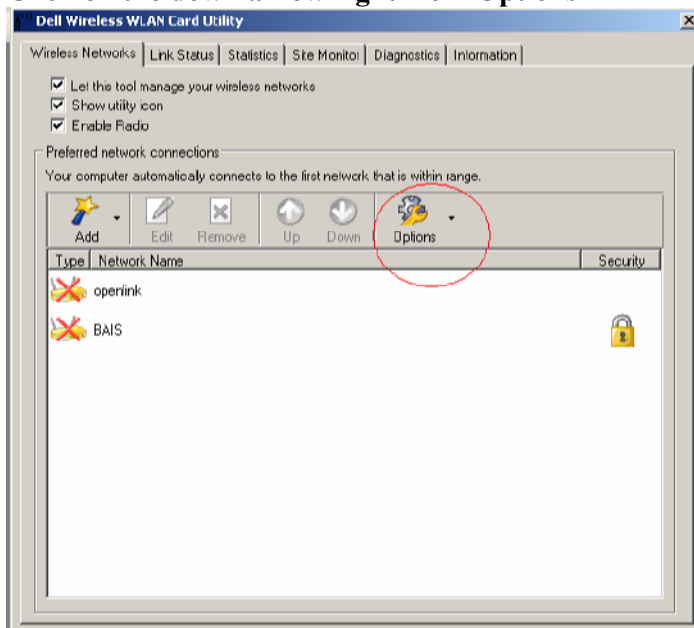
How to turn off 802.11 Ad-Hoc mode when using other WLAN card configuration tools

When Using Dell Wireless WLAN Card Utility

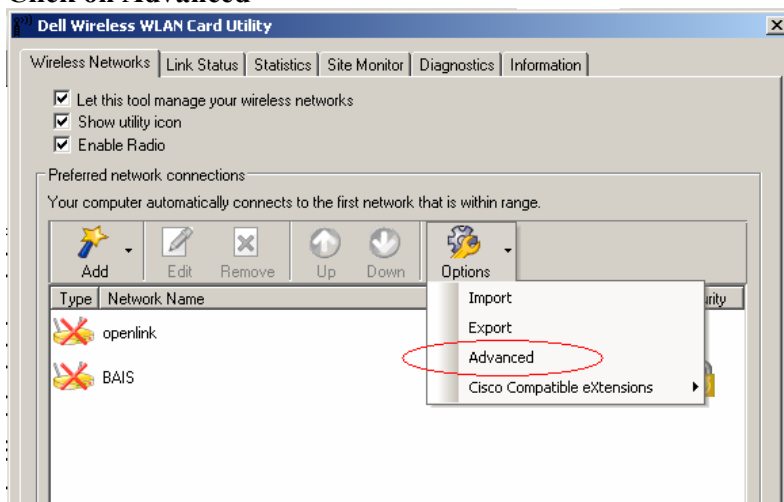
Open the utility - e.g. click on the Icon in bottom right bar



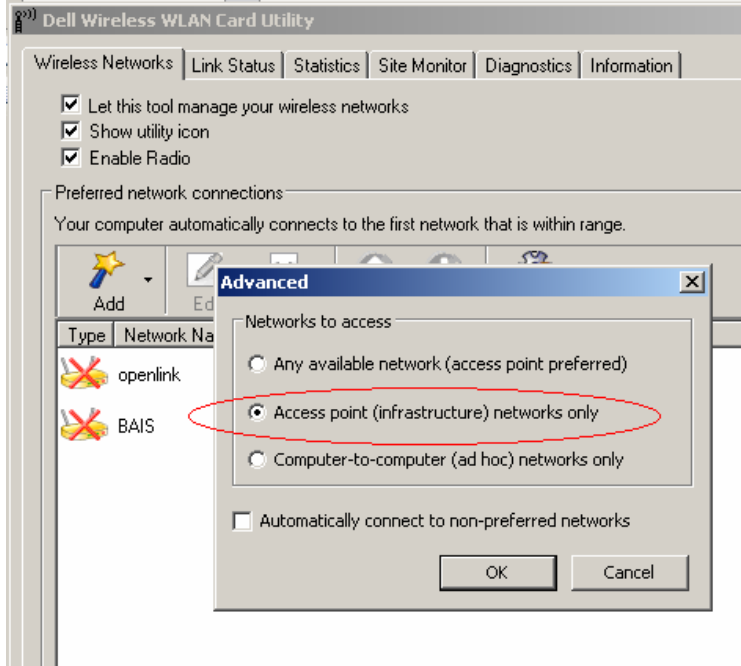
Click on the down arrow right from Options



Click on Advanced



Click to select on Access point (infrastructure) networks only



Click OK

Mac OS X

How to turn off 802.11 Ad-Hoc mode when using Mac OS X 10.3 or earlier

MacOS users using MacOS 10.3 ("Panther") or earlier MUST disable the Mac's default configuration as a base station. MacOS 10.4 ("Tiger") never automatically creates networks.

Open "System Preferences"/"Network", under the "Show:" selection box select "AirPort", and uncheck "Allow this computer to create networks". Click "Apply".

