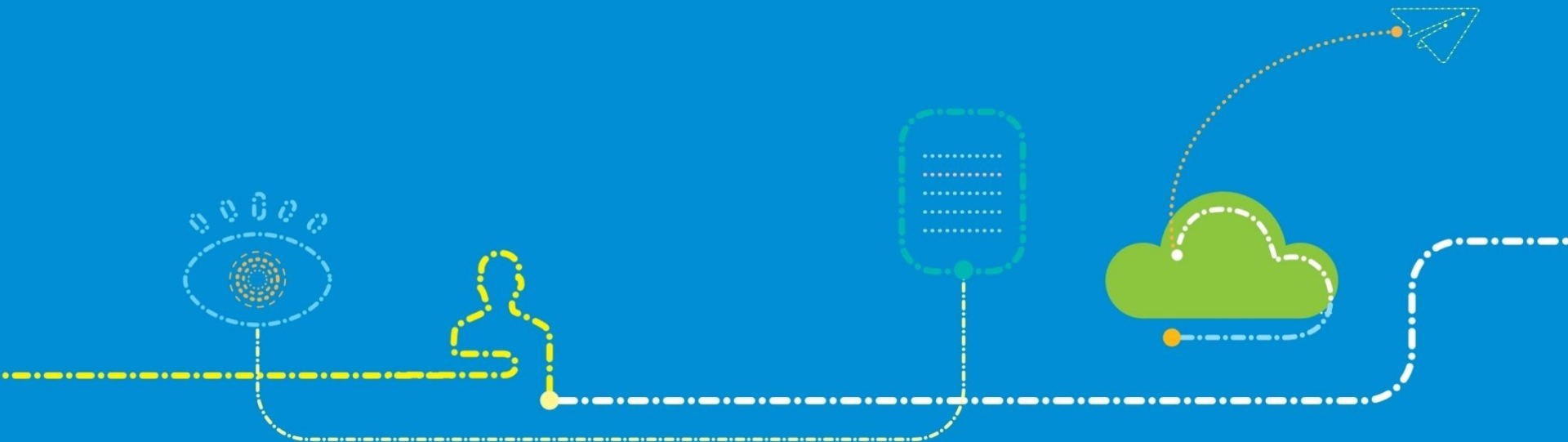


R2-2506453

ZTE中兴

Summary of [AT131][601][Maint] Spatial Relation Info list extension (ZTE)



Outcome of Offline Disucssion

Easy Agreements :

- Proposal 1 (easy agreement): RAN2 clarifies that "If the network includes spatialRelationInfoToAddModListExt in a RRCReconfiguration message, it shall include the same number of entries, and listed in the same order, as in the concatenation of included spatialRelationInfoToAddModList and included spatialRelationInfoToAddModListSizeExt in the same message" . No spec change is needed.
- Proposal 2: In the case where there are 8 entries have already been created by the patialRelationInfoToAddModList (i.e.Rel-15 ToAddModlist), it is allowed for NW to use the spatialRelationInfoToAddModList alone for adding more elements if the available Id of the added entry is no more than 8, or together with spatialRelationInfoToAddModListExt if the available Id of the added entry is greater than 8. No spec change is needed.
- Proposal 3(Easy Agreement): RAN2 confirms that an entry created using spatialRelationInfoToAddModList can be modified using spatialRelationInfoToAddModListSizeExt, and vise versa. No spec change is needed.
- Proposal 5(Easy Agreement): RAN2 clarifies that the PUCCH-SpatialRelationInfold-r16 is equivalent to pucch-SpatialRelationInfold or pucch-SpatialRelationInfold-v1610 when UE receiving the spatialRelationInfoToReleaseListExt-v1610. No spec change is needed.

Outcome of offline Disucssion

Need Discussion online:

Proposal 4: Remove the '(or deleted using spatialRelationInfoToReleaseListSizeExt)' from the field description of 'spatialRelationInfoToAddModList', add the following description in the field description of 'spatialRelationInfoToReleaseList':

an entry created using spatialRelationInfoToAddModList can be deleted using spatialRelationInfoToReleaseListSizeExt, if its ID is in the range of elements of spatialRelationInfoToReleaseListExt, or using spatialRelationInfoToReleaseListExt otherwise; And an entry created using spatialReleationInfoToAddModListSizeExt can be deleted using spatialRelationInfoToReleaseList, if its ID is in the range of elements of spatialRelationInfoListExt, or using spatialRelationInfoToReleaseListExt otherwise.

TP for Proposal 4

spatialRelationInfoToAddModList, spatialRelationInfoToAddModListSizeExt, spatialRelationInfoToAddModListExt Configuration of the spatial relation between a reference RS and PUCCH. Reference RS can be SSB/CSI-RS/SRS. If the list has more than one element, MAC-CE selects a single element (see TS 38.321 [3], clause 5.18.8 and TS 38.213 [13], clause 9.2.2). The UE shall consider entries in *spatialRelationInfoToAddModList* and in *spatialRelationInfoToAddModListSizeExt* as a single list, i.e. an entry created using *spatialRelationInfoToAddModList* can be modified using *spatialRelationInfoToAddModListSizeExt* ~~(or deleted using *spatialRelationInfoToReleaseListSizeExt*)~~ and vice-versa. If the network includes *spatialRelationInfoToAddModListExt*, it includes the same number of entries, and listed in the same order, as in the concatenation of *spatialRelationInfoToAddModList* and of *spatialRelationInfoToAddModListSizeExt*.

spatialRelationInfoToReleaseList, spatialRelationInfoToReleaseListSizeExt, spatialRelationInfoToReleaseListExt Lists of spatial relation configurations between a reference RS and PUCCH to be released by the UE. ~~An entry created using *spatialRelationInfoToAddModList* can be deleted using *spatialRelationInfoToReleaseListSizeExt*, if its ID is in the range of elements of *spatialRelationInfoToReleaseListExt*, or using *spatialRelationInfoToReleaseListExt* otherwise; And an entry created using *spatialRelationInfoToAddModListSizeExt* can be deleted using *spatialRelationInfoToReleaseList*, if its ID is in the range of elements of *spatialRelationInfoListExt*, or using *spatialRelationInfoToReleaseListExt* otherwise.~~